



SEMINARS - ANCON CONFERENCE ROOM

Tuesday, November 29 the noon seminar speaker will be ALLEN HERRE, University of Iowa.

Coevolution of reproductive characteristics of twelve species of figs and their pollinator wasps.

A lunch will be offered followed by a second seminar at 1:30 p.m. by HALL CUSHMAN, North Arizona State University.

Conditional mutualism in a membracid-ant association.

At 7:00 p.m JOHN CHRISTY will give the scientific staff seminar. All visitors and students are welcome.

Attractiveness, mate choice and a sensory trap in the fiddler crab Uca beebei.

NEXT WEEK

Tuesday, December 6, noon seminar speaker will be KATHLEEN COLE, University of Puerto Rico.

Hermaphroditism revisited- new perspectives provided by gobiid fishes.

ARRIVING

November 26 - December 3, J. HALL CUSHMAN, Northern Arizona State University, to visit STRI facilities and explore possibilities for future research.

November 27 - December 4, JOHN BULTMAN, U.S. Naval Research Lab, and THOMAS BIRDWELL, General Electric, to continue studies at the Naos Marine Lab.

November 28 - December 7, Team from the Environmental Management and Safety Office to perform a Management Evaluation Technical Review. Itineraries are being sent to all concerned.

ARRIVALS (cont.)

December 1 - 7, HENRY HOWE, University of Iowa, to continue research at BCI on Seedling maps of Virola surinamensis.

DEPARTURES

November 27, IRA RUBINOFF, JEREMY JACKSON, BRIAN KELLER, JOHN CUBIT and KARL KAUFMAN to Reston, Virginia, to attend meetings relating to the Oil Spill Project.

REMINDER

November 28 - celebration of Panama's independence from Spain is a national holiday. Banks and government offices will be closed.

ON LEAVE

Jeremy Jackson - in the U.S. on combined official an annual leave from Nov. 27 - Dec. 3rd.

Maria Morello - Dec. 1 - 12.

CALENDAR FOR DECEMBER

DECEMBER 1988						
S	M	T	W	T	F	S
				1	2	3
4	5	6	7	8	9	10
11	12	13	14	15	16	17
18	19	20	21	22	23	24
25	26	27	28	29	30	31

December 6 - Meeting of BCNM Committee.

December 8 - Mother's Day, official STRI holiday.

December 13 - Monthly scientific staff meeting.

p.m. Meeting of Academic Board.

December 26 - Official Xmas Holiday. STRI offices will close.

FROM THE PERSONNEL OFFICE

All employees are reminded that annual leave in excess of the ceiling (normally 240 hours) cannot be carried over into the next leave year. Such leave is forfeited if it is not used by December 31, 1988.

DE LA OFICINA DE PERSONAL

Se les recuerda a todos los empleados que las horas de "annual leave" que excedan al máximo (normalmente 240 horas), no se pueden traspasar al próximo año. Estas horas de vacaciones se perderán si no se toman antes del 31 de diciembre de 1988.

FROM ACCOUNTS PAYABLE

Please send invoices to the accounting office as soon as packages are received. This helps STRI process payments without delays and maintain good relations with vendors. Your collaboration is appreciated.

GALETA NEWS

89-3619 is in operation.  
89-5202 has been fixed.

BCI NEWS

Barro Colorado office schedule:

Monday thru Friday  
8:00 a.m. - 12:00 noon  
12:30 p.m. - 4:00 p.m.

When Las Cruces is running office hours will change to:

8:45 a.m. - 12:00 noon  
12:30 p.m. - 3:30 p.m.

The STRI gamewardens are accepting contributions (clothes, toys, etc.) for the Las Pavas Xmas Party. Please send these to Alejandro Hernández or Maritza Concepción.

WANTED - TITLE FOR PHOTO EXHIBIT

Suggestions are being solicited on a suitable title for the photo exhibit on the development of tropical biology to be housed at the new Tupper Center. Send suggestions to Elena Lombardo as soon as possible.

ALLIANCE OFFERS RESEARCH GRANTS

Much rainforest destruction is done piecemeal by growing numbers of settlers and itinerant farmers who slash and burn small plots to make way for cattle and crops. When the thin top soils wear out, farmers move on, clearing more forest.

The Rainforest Alliance is offering a fellowship to encourage research in agroforestry. The aim is to assist a scientist in developing a crop or product that can be harvested from the forest without harming it and give families in the forest a way to make a living without cutting trees.

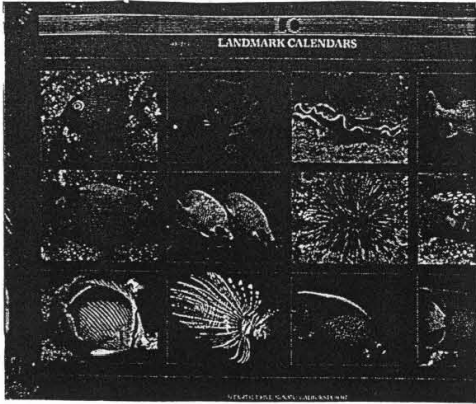
The fellowships \$15,000 a year for 2 years, will begin in September 1989. Any researcher may apply. The research may be conducted in any tropical forest ecosystem worldwide.

Applications are due by December 31, 1988. For application guidelines write KLEINHANS FELLOWSHIPS, Rainforest Alliance, 295 Madison Avenue, Suite 1804, New York, N.Y. 10017.

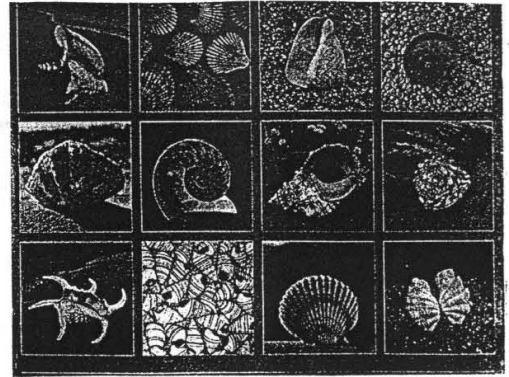
CALENDARS FOR SALE

The STRI Mini Book Store is selling beautiful color calendars on nature themes at \$10.00 each. There is a limited number, so buy yours now.

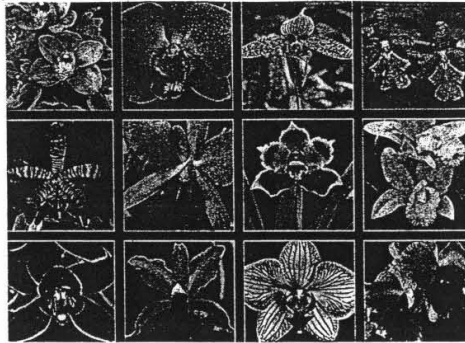
TROPICAL RAIN FORESTS  
AN ENGAGEMENT CALENDAR FOR 1989



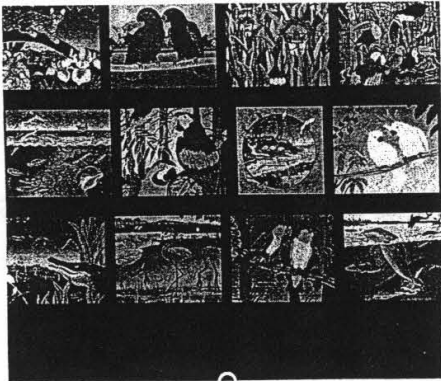
"Tropical Beauties"



"Shells"



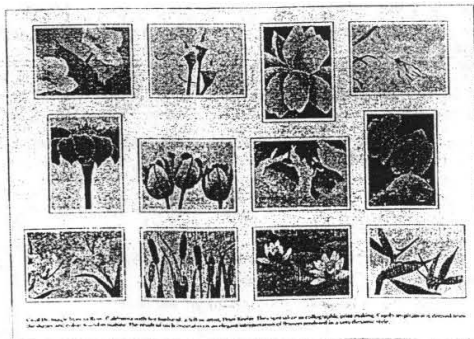
"Orchids"



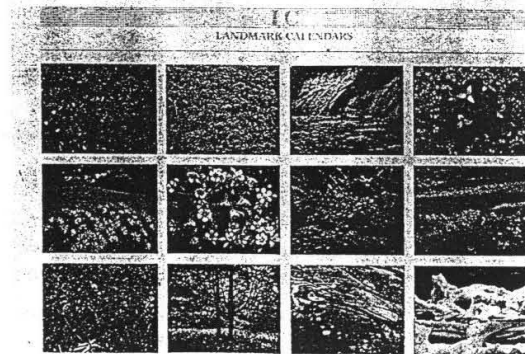
"Birds and Beasts"



"Tropical Feathered Birds"



"Carol Hoffnagle"



"Nature"

## LIBRARY NEWS

## New Books:

- ADVANCES IN THE STUDY OF BEHAVIOR. (Edited by Jay S. Rosenblatt et al, 1988).  
volume 18.  
QL758.A.245. STRI
- AGROFORESTRY: REALITIES, POSSIBILITIES, AND POTENTIALS.(Edited by Henry L. Gholz, 1987).  
S494.5.A45A379 STRI
- APPLICATIONS OF CONTROL THEORY IN ECOLOGY : PROCEEDINGS OF THE SYMPOSIUM ON OPTIMAL CONTROL THEORY...(Edited by Y. Cohen, 1987).  
QH541.15.H3S896 STRI
- BOTANY OF THE GUAYANA HIGHLANDS (Bassett Maguire, Richard S Cowan, John J. Murdack, and collaborators, 1953-1984). *Memoirs of the New York Botanical Garden*  
KQ241.M213 STRI
- BUTTERFLIES OF WEST MALAYSIA AND SINGAPORE( W. A. Fleming, 1983).2nd edition  
QL556.M4F59 STRI
- CORAL REEF GEOMORPHOLOGY(Andre Guilcher, 1988)  
GB461.G85 STRI
- CORAL REEF POPULATION BIOLOGY(Edited by Paul L. Jokiel, Robert H. Richmond, and Rebecca A. Rogers, 1986).  
QH541.5.C7C78 STRI
- CURCULIONIDAE TRIBE OPHRYASTINI OF NORTH AMERICA(COLEOPTERA)(David G. Kissinger, 1970).  
QL596.C9K574 STRI
- ECOLOGY AND PRODUCTIVITY OF AN AFRICAN WETLAND SYSTEM: THE KAFUE FLATS, ZAMBIA(G. A. Ellenbroek,1987).  
KQ402.Z3E45 STRI
- ECOLOGY OF THE FORESTS AND WOODLANDS OF SOUTH AMERICA(Edited by H.R. Wallace, 1986) *Handbook of the flora and fauna of South Australia.*  
QH541.5..F6E19 STRI
- ESTUDIOS EN AGARICALES COLOMBIANOS(Maria Margarita Pulido,1983).  
KQ629.H9P98 STRI
- FIELD BOOK OF SEASHORE LIFE(Roy Waldo Miner, 1950)  
QH91.M66 STRI
- FOREST RESOURCES OF TROPICAL AFRICA: REPORT.(FAO,1981) 2 volumes.  
Library has received volume 1: Regional synthesis.  
SD237.F67 STRI
- FRAGMENT OF AN EARLY K'EKCHI VOCABULARY(Edited by Ray A. Freeze, 1975).  
PH3913.Z5F7 STRI
- GAME BIRDS OF CALIFORNIA...(Joseph Grinnell, Harold Child and Tracy Irwin Storer, 1910).  
QL696.S268 STRI
- GRAY'S MONITOR LIZARD (Walter Auffenberg, 1988).  
QL666.L29A933 STRI
- IMAGE OF DISEASE: MEDICAL PRACTICES OF NAHUA INDIANS OF THE HUASTECA(Alan R. Sandstrom,1978).*Monographs in anthropology* ; no. 3  
F1221.H3S26 STRI
- IN SEARCH OF REPTILES AND AMPHIBIANS (Richard D. Bartlett, 1988).  
QL651.B38 STRI
- INFLUENCE OF SEED PREDATION AND PLANT COMPETITION ON TREE SPECIES ABUNDANCES IN TWO ADJACENT TROPICAL RAIN FOREST COMMUNITIES IN TRINIDAD, WEST INDIES(Judy McKean Rankin,1978).  
thesis(Ph.D.)  
KQ486.2.T7R2115 STRI
- INTRODUCTION TO MARINE SCIENCE(P.S.Meadows, and J.I. Campbell,1988). 2nd edition  
QH90.H43 STRI
- LIFE HISTORIES OF NEW ZEALAND BIRDS(Edgar F. Stead, 1932).  
QL693.S.579 STRI
- LIPID ANALYSIS:ISOLATION, SEPARATION, IDENTIFICATION, AND STRUCTURAL ANALYSIS OF LIPIDS (William W. Christie, 1982) 2nd ed.  
QP751.C49 STRI
- LISTA PATRON DE LAS AVES CHILENAS(Braulio Araya, 1985) 2nd ed.  
QL689.C5A7 STRI
- LOWLAND HUASTECA ARCHAEOLOGICAL SURVEY AND EXCAVATION: 1957 FIELD SEASON(William T. Sanders, 1978).  
F1219.L.H77S26 STRI
- MATERIAL AND SOCIAL DETERMINANTS OF POLITICAL LEADERSHIP IN A TOJOLABAL MAYA COMMUNITY(John S. Thomas, 1986).  
F1221.C46T4 STRI
- METALS IN COASTAL ENVIRONMENTS OF LATIN AMERICA(Edited by U. Seeliger, L.D. de Lacerda and S. R) Patchineelam, 1988).  
TD427.H45H48 STRI
- MICROBIOLOGY OF TERRESTRIAL ECOSYSTEMS(B.M. Richards, 1987).  
QR111.R49 STRI
- MONARCH BUTTERFLY :INTERNATIONAL TRAVELER(Fred A. Urquhart, 1987).  
QL561.D3U78 STRI
- NEW DIRECTIONS IN ECOLOGICAL PHYSIOLOGY(Edited by Martin E. Feder...et al, 1987)  
QH546.H48 STRI
- OIL IN FRESHWATER:CHEMISTRY, BIOLOGY, COUNTERMEASURE TECHNOLOGY ...(*Symposium of oil pollution in freshwater (1984 :Edmonton, Alta., 1987)*)  
TD226.S96 STRI
- OPEN RESEARCH PROBLEMS IN THE LIFE SCIENCES UNDER TROPICAL CONDITIONS...(Institut de la vie. Conference(1985: Fort-de-France, West Indies,1987)  
QH84.5.I59 STRI
- PACIFIC RESEARCH CENTRES: A DIRECTORY OF ORGANIZATIONS IN SCIENCE, TECHNOLOGY, AGRICULTURE, AND MEDICINE(Compiled by Longman editorial team, 1986)  
Q179.9B.P33 STRI REF
- PAHAMA IN TRANSITION : LOCAL REACTION TO DEVELOPMENT POLICIES.(John R. Bort and Mary W. Helms, 1983)  
F1566.B67 STRI
- PAPERS FROM 1982-83 EL NIÑO/SOUTHERN OSCILLATION DATA DISPLAY WORKSHOP...(El Niño/Southern Oscillation ....,1984)  
GC296.8.E3N716 STRI
- PRIMITIVE POLLUTERS : SEHANG IMPACT ON THE MALAYSIAN TROPICAL RAIN FOREST ECOSYSTEM(Terry A. Rambo, 1985)  
DS595.2.S4R16 STRI
- PROCEEDINGS OF THE CONFERENCE ON ASSESSMENT OF ECOLOGICAL IMPACT OF OIL SPILLS(American Institute of Biological Sciences, Arlington,VA, 1978)  
wfc 1268n STRI
- PURPOSE OF FORESTS: FOLLIES OF DEVELOPMENT(Jack C. Westoby,1987)  
SD247.5.H53 STRI
- REMOTE SENSING AND IMAGE INTERPRETATION(Thomas M. Lillesand and Ralph W. Kiefer, 1987) 2nd ed.  
G70.A.L54 STRI
- REPRODUCTIVE BIOLOGY OF INVERTEBRATE(Edited by K.G. and Rita G. Adiyodi, 1983)  
QL364.15.R45 STRI
- REPRODUCTIVE PHYSIOLOGY OF TELEOST FISHES: A REVIEW OF PRESENT KNOWLEDGE AND NEEDS FOR FUTURE RESEARCH(B.L. Sundararaj, 1981)  
QL639.2.S86 STRI
- REPRODUCTIVE SUCCESS: STUDIES OF INDIVIDUAL VARIATION IN CHANGING BREEDING SYSTEMS(Edited by T.H. Clutton-Brock, 1988)  
QL761.R47 STRI
- RESPONDING TO CHANGES IN SEA LEVEL: ENGINEERING IMPLICATIONS(National Research Council....,1987)  
TC223.H37 STRI
- SENSORY BIOLOGY OF AQUATIC ANIMALS(Edited by Jelle Atema...et al,1988)  
QL120.S46 STRI
- SEQUENCE ANALYSIS IN MOLECULAR BIOLOGY : TREASURE TROVE OR TRIVIAL PURSUIT(Gunnar von Heijne,1987)  
QP551.H43 STRI
- SOLUTE TRANSPORT IN PLANT CELLS AND TISSUES(Edited by D.A. Baker and J.L. Hall, 1988)  
KQ871.S63 STRI
- STATE OF THE ARK(Lee Durrell,1986)  
QH75.D87 STRI
- TRAITE DE ZOOLOGIE; ANATOMIE SYSTEMATIQUE, BIOLOGIE. CNIDAIRES(ANTHOZOAIRES) (Edited by Pierre P. Grasse, 1988) tome III fasc.3  
QL45.T7x STRI REF
- TROPICAL RAIN FOREST: A FIRST ENCOUNTER(Marius Jacobs,1988)  
QH541.5.R27J3313 STRI
- VEGETATION OF INLAND WATERS(Edited by J.J. Symoens, 1988)  
KQ105.V44 STRI
- WHITE GRUBS AND THEIR ALLIES...(Paul O. Rytcher,1966)  
QL596.S3R55