

STRI news

December 5, 1997

Smithsonian Tropical Research Institute • Apartado 2072, Balboa, Panamá • Tel. 227-6022 • Fax 232-5978

TUPPER CENTER SEMINARS

Tue, Dec 9, noon seminar speaker will be Miles Silman, Louisiana State University
Building a Tropical Forest from the Bottom Up

Abstract

What structures tropical tree communities? The hypotheses are nearly as diverse as the forests themselves. One aspect of trees that is often overlooked in studies of their community ecology is that they start small, get big, and take a very long time to do it. In this talk I report my thesis work on the role of early life-history in tropical tree community structure at Cocha Cashu Biological Station, Manu National Park, Peru. I use community-level monitoring and field manipulations to address the role of life-history variation and trade-offs in determining the relative abundances of tree species.

BAMBI SEMINAR AT BCI

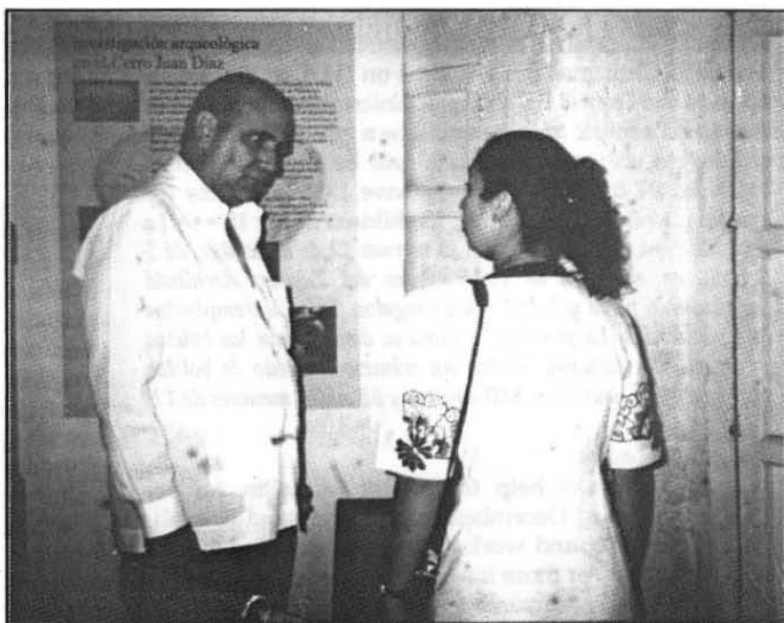
Thursday, December 11, Bambi seminar speaker will be Bob Stallard, US Geological Survey. For more information please contact Courtney Murren, at BCI.

Transportation and dinner reservations are essential. Please call BCI at 272-2124.

NAOS LUNCHEON SEMINAR

Friday, December 12, Naos Marine Lab Luncheon seminar speaker will be David DeWayne Shoemaker, University of Rochester, at the Surfside Conference Room
*Effects of Social Organization on gene Flow in the Fire Ant *Solenopsis invicta**

more information about the Naos Luncheon seminars please contact Bailey Keissing at Naos, ext. 3330 or consult the Web at http://160.111.136.12/Naos_Luncheon_Schedule.html



Vice-President Felipe Virzi recently visited the exhibition "Vida y Costumbres de un Pueblo Precolombino", organized by STRI and the Instituto Nacional de Cultura, at the Museo de la Nacionalidad, Villa de Los Santos ••• El vicepresidente Felipe Virzi visitó recientemente la exhibición "Vida y Costumbres de un Pueblo Precolombino", organizada por STRI y el Instituto Nacional de Cultura, en el Museo de la Nacionalidad, Villa de Los Santos.

(Foto: Adrián Cerezo)

PEOPLE

Arrivals

- Catherine Potvin and Robert Bonnell, McGill University, Dec 6-15, to meet with staff to discuss a possible McGill field course in Panama.
- BBC filming crew, Dec 6, to document research projects at STRI.
- Robert Hanle, new SI Development Office Executive Director, Dec 8-11, to visit STRI facilities and meet with staff.
- Lucy Dorick, STRI Development Officer, Dec 8-11, to attend meetings with Robert Hanle.
- Steven Telford, South Africa, Dec 10 - Jul 30, to work with Michael Jennions in his project on cichlid fish *Aequidens coeruleopunctatus*, at Naos.

New Honors

- Llewellya Hillis has been awarded the title of Honorary Professor of the University of Bucharest, Romania by the Rector of the University.
- Martin Wikelski has been elected Member of the Charles-Darwin Foundation for the Galapagos Islands.

ANNOUNCEMENTS

The STRI Christmas Party will be on Fri, Dec 12, from 1-6p.m. at the Tupper Exhibit Hall. Entertainment will be by Archibold's music and there will be a gifts raffle. All STRI employees are invited. Tickets will be distributed next week at all facilities. We will have limited tickets for special guests: \$10 adults and \$5 children under 12 ••• *La fiesta de Navidad de STRI será el viernes 12 de diciembre, de 1 a 6pm, en el Salón de Exhibiciones del Tupper. Archibold amenizará la fiesta y habrá rifa de regalos. Todos los empleados están invitados. La próxima semana se distribuirán los boletos en todas las estaciones. Habrá un número limitado de boletos para invitados especiales, \$10 adultos y \$5 niños menores de 12.*

Help Needed

Tom Kursar seeks help to fill out forms in Adobe, during the end of December. Must understand English, have a computer and work at home. Approximately 60 hours of work. For more information please contact him at BCI or e-mail: tkursar@bci.si.edu

FROM SECURITY ••• DE SEGURIDAD

The criminal activity in the Province of Darien has intensified. The security situation has deteriorated and an assessment of the real situation is very difficult due to the lack of reliable official information. It is strongly recommended that everyone associated with STRI avoid traveling to Darien ••• *Las actividades criminales han recrudecido en la provincia del Darién. La seguridad está deteriorada y no se sabe realmente cual es la situación debido a la falta de información oficial. Se les recomienda a todos los que están asociados a STRI evitar cualquier viaje al Darién.*

MISCELLANEOUS

El Grupo Conservacionista "Amigos de la Tierra" del Centro Educativo Socrático está organizando dos fiestas de Navidad, una para los niños del Orfelinato "Hogar de la Infancia" el día miércoles 17 de diciembre y otra para el Asilo Bolívar, el día lunes 22 de diciembre. Se aceptarán juguetes para edades de 8 a 14 años, y ropa, regalos o artículos de primera necesidad para los ancianos. Habrá una caja con identificación en el salón de distribución del correo del Centro Tupper para recoger estas donaciones. Para mayor información favor llamar a Omasiel Comrie, del Proyecto de Gusano Barrenador, en el Centro Tupper.

NEW STRI PUBLICATIONS

**l'Alimentation
en forêt tropicale**
interactions bioculturelles
et perspectives de développement



Sous la direction de : Claude Marcel HLADIK,
Annette HLADIK, Hélène PAGEZY, Olga F. LINARES
Georgius J.A. KOPPERT et Alain FROMENT



Volume I
Les ressources alimentaires :
production et consommation

Volume II
Bases culturelles des choix alimentaires
et stratégies de développement

- Hladik, Claude Marcel, Hladik, Annette, Pagezy, Hélène, Linares, Olga F., Koppert, Georgius J.A. and Froment, Alain. [eds.] 1996. *l'Alimentation en Forêt Tropicale: Interactions Bioculturelles et Perspectives de Développement. Volume I: Les Ressources Alimentaires: Production et Consommation. Vol II: Bases Culturelles des Choix Alimentaires et Stratégies de Développement.* [Series]: L'Homme et la Biosphère, Paris: UNESCO.
- Wcislo, William T. 1996. "Parasitism Rates in Relation to Nest Site in Bees and Wasps (Hymenoptera: Apoidea)." *Journal of Insect Behavior* 9(4): 643-656.
- Windsor, Donald, and Jolivet, Pierre. 1997. "Cycad-Feeding by an Ancient Beetle, *Aulacoscelis* in Panama." *Chrysomela* 34: 5.
- Zotz, Gerhard and Ziegler, H. 1997. "The Occurrence of Crassulacean Acid Metabolism Among Vascular Epiphytes from Central America." *New Phytologist* 137: 223-229.