

STRI newsletter

March 15, 1995

SMITHSONIAN TROPICAL RESEARCH INSTITUTE - Apartado 2072, Balboa, Panamá

No. 3

TUPPER CENTER SEMINARS

Tuesday, March 21, noon seminar speaker will be Wickman Per-olof, Stockholm University, in the Large Meeting Room
The Evolution of Lekking

☛ Please note the unusual room assignment for this seminar.

BAMBI SEMINAR

Thursday, March 23, Bambi seminar speakers will be Kyle Harms, Princeton University and Gregory Gilbert, STRI, on Barro Colorado Island, at 7:30pm

Long Term Survival of Seedlings of Ocotea whitei

Transportation and dinner reservations are essential.

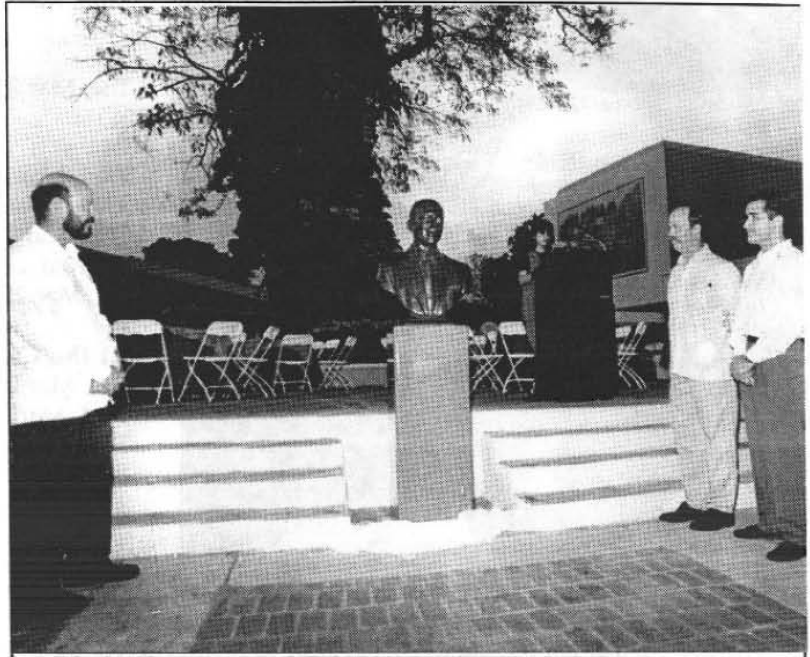
PEOPLE

Arrivals

- Elizabeth Losos, Mar 19-27, to attend the Fellowship Meetings, and then to Ecuador on CTFS official business.
- Zoe Billinghurst, University of York, England, Mar 19-3 Apr, to study the variation in cnidarian symbiosis, at Naos.
- Bruce Rogers, Short-term Fellow, and Travis Sewalls, University of Kentucky, Mar 20-3 Aug, to study the effects of condition on allocation to current versus future reproduction by female bluehead wrasses (*Thalassoma bifasciatum*), at San Blas.
- Nine students from the OTS, Costa Rica, Mar 20-23, to visit STRI facilities.

Departures

- Richard Condit, Mar 20-27, to Ecuador, on official CTFS business. Will also visit the Yasuni research station.
- Héctor Guzmán, Mar 21-30, to the Cayo Cochinos Station in Honduras, and consult with officials in Tegucigalga and La Ceiba.
- A. Stanley Rand, Mar 22-15 Apr, to Washington D.C., on official business at SI.



During the ceremony of inauguration of the new library annex and the unveiling of a bronze bust of philanthropist Earl Silas Tupper, Mónica Alvarado introduced (from the left) Glenn O. Tupper, Mark Tupper and Earl T. Shannon, members of the family of the late Earl S. Tupper, on Thursday, March 16.

(Foto: M.A. Guerra)

THINGS YOU SHOULD KNOW

Reunión Técnica Sobre Herbarios de Centroamérica y el Caribe

El Proyecto Conservación para el Desarrollo Sostenible en América Central (CATIE/Olafo), STRI, la Universidad de Panamá y el Programa Iberoamericano de Ciencia y Tecnología para el Desarrollo (CYTED), Subprograma X Química Fina Farmacéutica, patrocinarán una reunión técnica sobre herbarios de Centroamérica y el Caribe con sede en STRI, del 20 al 24 de marzo, organizada por Rafael Ocampo, CATIE y Mireya Correa, STRI/Universidad de Panamá. Los objetivos de la reunión son los conocer sobre la situación actual de los herbarios de la región y sus actividades de investigación y docencia; promover acercamiento entre su personal en el área; definir necesidades prioritarias para una consolidación como herramienta para actividades vinculadas con la valoración de la biodiversidad; promover actividades que mejoren el conocimiento sobre biodiversidad y desarrollo sostenible; promover mayor capacitación, entrenamiento y actualización de su infraestructura; y promover el intercambio de sus publicaciones, así como las que sobre el área se publican fuera de la región. Los participantes de la reunión llevarán a cabo sus sesiones de trabajo en el Auditorio y en el Salón de Conferencias del Tupper, visitarán diferentes instalaciones del Instituto, la Universidad de Panamá y viajarán al Parque Nacional Altos de Campana.



(Foto: M.A. Guerra)

The Most Distinguished Woman of the Year

La Mujer Más Distinguida del Año

The Soroptimist International Club of America in Panama selected Georgina de Alba, STRI Assistant Director for Fellowships and Education, as "the most distinguished woman of the year 1994-1995" for her outstanding achievements in environmental education since 1976. During the ceremony, held on March 11, de Alba was praised for her sustained perseverance in bringing to the general public since 1976, through publications, her coordination of educational programs and conferences, greater information on the conservation of tropical natural resources. According to her staff at STRI, "her success is not only the product of her educational background and personal drive, but also due to her special gift to listen and to respect the viewpoints and ideas of others" ••• *El Club Soroptimista Internacional de Panamá seleccionó a Georgina de Alba, Directora Adjunta para Becas y Educación de STRI, como "la mujer más distinguida del año 1994-1995" por sus logros sobresalientes en promover la educación ambiental, desde 1976. Durante la ceremonia de premiación, el 11 de marzo, las Soroptimistas destacaron la perseverancia de Alba para transmitir al público, a través de publicaciones, la coordinación de programas educativos y conferencias, una mayor información sobre la conservación de los recursos naturales tropicales. Según su personal en STRI, "su éxito es resultado no solo de su dedicación y educación académica, sino también de un don especial para escuchar y respetar los proyectos e ideas de los demás".*

At the Tupper Center

- Mon, Mar 20 Fellowship Meeting, LMR, 8am
Reunión Técnica sobre los Herbarios de Centroamérica y el Caribe, AUD, 8am
- Tue, Mar 21 Noon seminar by Wickman Per-olof, LMR
Reunión Técnica sobre los Herbarios de Centroamérica y el Caribe, AUD, 8am
- Wed, Mar 22 *Reunión Técnica sobre los Herbarios de Centroamérica y el Caribe, CH, 8am*
- Thu, Mar 23 OFE Gigante Field Course, LMR, 8am
- Fri, Mar 24 OFE Gigante Field Course, LMR, 8am
- Sat, Mar 25 OFE Gigante Field Course, LMR, 8am

At the Culebra Marine Reserve

- Tue, Mar 21 *Junta Comunal de Ancón*
- Wed, Mar 22 *Iglesia Cristiana Bautista Filadelfia*
- Thu, Mar 23 *Comunicación Social, Universidad de Panamá*
- Fri, Mar 24 *Grupo Vida*
- Sat, Mar 25 *Catequistas San Antonio de Padua.*

At Barro Colorado Island Station

- Sat, Mar 18 Ecologists from Penonomé
- Sun, Mar 19 Visitors from Panama City
- Sat, Mar 25 *Colegio Pedro Pablo Sánchez, Chorrera and Colegio Nuestra Señora de Lourdes*
- Sun, Mar 26 *Universidad Santa María La Antigua*

JOB OPPORTUNITY

Postdoctoral Position at STRI

A research associate position is available to join a team of researchers studying environmental and physiological regulation of water use in tropical forest plants. Research will focus on evaluation the influence of leaf and canopy boundary layers on stomatal control of transpiration and stomatal response to humidity; determining the role of stomata in balancing vapor and liquid phase water transport efficiency; characterizing spatial and temporal partitioning of soil water resources using stable hydrogen and oxygen isotope ratios in soil and xylem water; and efficiency of water transport to the leaves. The research, led by F. Meinzer and G. Goldstein, will be conducted at facilities operated by STRI in Panama. Canopy cranes operated by STRI will be utilized in some of the work. the candidate is expected to reside at STRI facilities on Barro Colorado Island and must have expertise in one or more of the following areas: plant-water relations, gas exchange, micrometeorology, stable isotope techniques. The ability to work interactively with a team of researchers is required. Applicants should also possess a high degree of initiative for planning and

carrying out multiple experiments simultaneously and for supervising undergraduate student assistants. Send letter of application, curriculum vitae and names, addresses, and fax numbers or e-mail addresses of three references to Dr. Frederick C. Meinzer, HSPA, P.O. Box 1057, Aiea, HI 96701 • Tel. (808)487-5561 • E-mail: meinzer@uhunix.uhcc.hawaii.edu • Fax: (808)486-5020.

NEW STRI PUBLICATIONS

- Denlinger, David L. 1994. "The Beetle Tree." *American Entomologist* Fall: 168-171.
- Clifton, Kenneth E. 1995. "Asynchronous Food Availability on Neighboring Caribbean Coral Reef Determines Seasonal Patterns of Growth and Reproduction for the Herbivorous Parrotfish *Scarus iserti*." *Marine Ecology: Progress Series* 116(1-3): 39-46.
- Lara Orocu, Beatriz E. 1995. Estudio Florístico de los Musgos Cortícolas en Árboles, Palmas Mayores o Iguales a 10 cm de DAP y Helechos Arbóreos en las Siete Primeras Parcelas del Sendero de Interpretación Panamá del Parque Nacional Altos de Campana. Thesis. Panamá: University of Panama.
- Otake, T., Mori, H., Morimoto, M., Ueba, N., Kusumoto, I.T., Lim, Y.A., Miyashiro, H., Hattori, M., Namba, T., Gupta, Mahabir and Correa, Mireya. 1994. "Anti-Human Immunodeficiency Virus Activity of Some Tropical Medicinal Plants." *Journal of Traditional Medicines* 11: 188-193.
- Robb Bevier, Catherine. 1995. Physiological Constraints on Calling Activity in Neotropical Frogs. Ph.D. Dissertation. The University of Connecticut.
- Salazar A., Noris and Morales Z., María Isabel (eds). 1994. *Briolatina*. Boletín Informativo No. 34. Panamá: Sociedad Latinoamericana de Briología.
- Seutin, Giles, Klein, N.K., Ricklefs, R.E. and Bermingham, E. 1994. "Historical Biogeography of the Bananaquit (*Coereba flaveola*) in the Caribbean Region: A Mitochondrial DNA Assessment." *Evolution* 48(4): 1041-1061.



As part of the dedication ceremony, Vielka Chang Yau and Ira Rubinoff introduced First Lady Dora Boyd de Pérez Balladares (right) and librarians from the Panamanian community to the STRI Library, on Thursday, March 16 ••• Vielka Chang Yau y Ira Rubinoff presentaron las nuevas instalaciones de la biblioteca de STRI a la Primera Dama de la República, Dora Boyd de Pérez Balladares y a bibliotecarias de la comunidad, durante su inauguración, el jueves 16 de marzo.

(Foto: M.A. Guerra)

ANNOUNCEMENTS

Parque Nacional Soberanía Support Group

Due to the increase in the number of rural communities and families living on the eastern boundary of Parque Nacional Soberanía, the park is experiencing growing problems of illegal hunting. These communities suffer from acute poverty and unemployment. Seventy percent of the illegal poachers are unemployed men. In order to help the park and contribute to improving the conditions of these communities, STRI has established a support group for the Park involving housed scientists and INRENARE park rangers. The group meets monthly under the joint coordination of Stanley Heckadon, STRI, and Roberto Galán, INRENARE. Among several recommendations for actions, the group has agreed to urge all scientists working, or planning to work, at Parque Soberanía, to give priority in the hiring of field workers to young people from the peasant communities adjacent to the park. The list of potential candidates will be available at the Office of Fellowships and Education, Tupper Center. For more information please contact Stanley Heckadon, at STRI.



James Howe, Kuna expert from the Massachusetts Institute of Technology (left) visited Carti, Kuna Yala, to attend the First Festival of the Kuna Children Art Workshop. The workshop, celebrated from March 13-14, was organized by the Carti Suidup Congress and Jorge Ventocilla, STRI.

(Foto: M.A. Guerra)

FROM THE SECRETARY

150 1846-1996 Smithsonian

The Great Smithsonian Giveaway

The 150th Community Committee invites you to help celebrate 150 years of staff loyalty, dedication, and service with the *Great Smithsonian Giveaway* of 150 "prizes" to be donated voluntarily by Smithsonian museums, offices and research centers, celebrates and enhances staff awareness of the richness of our resources, collections, exhibitions, facilities, and most of all, the talents of our people.

These prizes will be presented to Smithsonian staff members through periodic drawings during 1996 —our 150th anniversary year. *Giveaway* items might include tickets to exciting events and special performances, courses, or trips to faraway and even exotic places. *Drawings* are free, and so that staff members at sites outside of Washington D.C. can participate, prizes will include items such as books, videos, recordings, and T-shirts.

A sample of items we have so far:

- a once-in-a-lifetime chance to have a life mask or hand cast of yourself —similar to those used in our exhibitions. Donated by the Office of Exhibits Central;
- an exclusive, behind-the-scenes tour of the National Zoological Park, and lunch with the Director;

- a set of four CDs or cassettes of music from the *Wade in the Water* series from Folkways Recordings;
- a personal tour of the Smithsonian Castle by the Director of the Office of Architectural History and Historical Preservation;
- a rare and beautiful orchid from the Smithsonian Orchid Collection or seasonal flowers grown at the Smithsonian donated every month for a year by the Horticulture Services Division.

Let us celebrate 150 years of Smithsonian staff service! Join in the *Great Smithsonian Giveaway* —contribute a special prize/prizes from your museum, unit, office or research center. All prizes will be described in a brochure to be distributed to every staff member.

To obtain more information or to donate your prize, contact Rumana Chandhuri, (202)357-1509 (phone) • (202)786-2557 (fax) • rac@ic.si.edu (e-mail), Quad 3123, MRC 705, Smithsonian Institution, Washington D.C. 20560 (address).

Note: At STRI you may contact Gloria Zelaya, Director's Office, to obtain more information or to donate your prize.

FROM THE EDITOR

In order to insure the delivery of the STRI Newsletter to each and all of the Institute's facilities on Friday, it will be reproduced on Thursday afternoon instead of Friday morning. To make this possible, all news must be at the Office of Education no later than Wednesday afternoon. Exceptions will be accepted until 1pm Thursday when totally necessary. Your cooperation will be greatly appreciated

••• *Con el objetivo de asegurar la entrega del "Newsletter" de STRI a todas y cada una de las instalaciones del Instituto los viernes, ésta se reproducirá los jueves por la tarde en vez de los viernes en la mañana. Para ello será necesario que todas las noticias estén en la Oficina de Educación antes de la tarde del miércoles. Se harán excepciones para noticias urgentes, las que deberán ser entregadas antes de la 1 de la tarde del jueves. Agradeceremos su cooperación.*