

STRI newsletter

DECEMBER 1, 1989

SMITHSONIAN TROPICAL RESEARCH INSTITUTE, Apartado 2072, Balboa, Panama

No. 49

SEMINARS

Ancon Conference Room

Tuesday, December 5, noon seminar speaker is **Gerald Wellington**, University of Houston.

Variation in components of fitness in an undersaturated damselfish population.

Abstract

Several recent studies show that local population size in some coral reef fishes may be regulated by the availability of recruits rather than by density-dependent processes occurring on the reef. Variation in fitness associated with density-dependent interactions, however, may occur even when populations are undersaturated. These interactions could be important in shaping patterns of species distribution and abundance. I present a verbal model, along with some empirical evidence, in support of this viewpoint.

NEXT WEEK

No seminar scheduled for Tuesday, December 12.

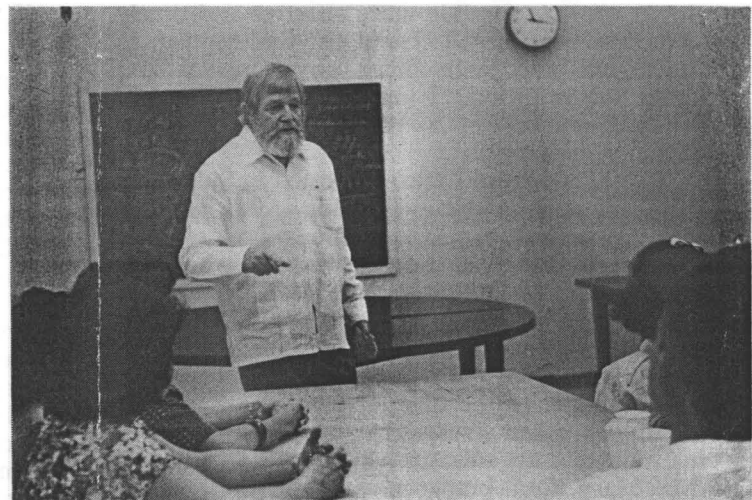
PEOPLE

Arrivals

- December 4 - 16, **Ola Fincke**, University of Missouri, to study competition for treeholes among giant damselflies on BCI.
- December 4 - January 9, 1990, **Diane DeSteven**, University of Wisconsin, to study the dynamics of tropical tree seed production and seedling recruitment.
- December 3 - 17, **George Angehr**, to consult with Dr. Rubinoff.

STRI Birthdays / Cumpleaños

Osés, Dionisio	4
Almanza, Nicolás	6
Castillo, Luis	6
Cruz, Luis	13
Smythe, Nicholas	15
Ramos, Andrés	17
Rubinoff, Ira	21
Velarde, Anibal	22
Ríos, Raul	25
Santamaria, Mario	27
Crespo, Marissa	31



This year one of the collaborative efforts between INRENARE's Dept. of Environmental Education and STRI's Office of Education and Conservation has been the monthly conferences at INRENARE by STRI staff and visitors. (Seen in the photo is N. Smythe.) We expect to continue in 1990, and wish to thank all of those who participated this year.

Este año, el personal y visitantes de STRI han dictado charlas mensuales en el Ciclo de Conferencias de INRENARE, como parte de un esfuerzo de colaboración entre el Depto. de Educación Ambiental de INRENARE y la Oficina de Educación y Conservación de STRI. (Ver al Dr. Smythe en la foto.) Esperamos continuar este programa en 1990, y deseamos agradecer a aquellos que participaron este año.

ANNOUNCEMENTS

STRI Newsletter Gets New Facelift

Since November 2nd, the newsletter editors have been experimenting with new features and different ways of presenting the news. We would appreciate any and all constructive criticisms from interested readers on what features you like and which ones you do not, and any other ideas you may have.

STRI Washington Office

In an effort to provide more effective and timely interaction between STRI and the Smithsonian in Washington and with other governmental and private sector groups, I am pleased to announce the establishment of a **Washington Office for STRI**.

STRI's Washington Office is located in Suite 2207 of the Arts and Industries Building at 900 Jefferson Drive, Washington, D.C. This office will be coordinated by Mr. Edgar Maravi who will continue in his principal role as Development Officer for STRI. I am appointing Dr. George Angehr to the new position of assistant to the development officer. Dr. Angehr will also serve as special advisor to the director and as liaison with Washington-based research, conservation, and environmental organizations.

Ms. Mary Ann Lindgren, a recent graduate of Stephens College in Missouri, will begin work as secretary and administrative assistant to the Washington Office at STRI.

All STRI staff are invited to use these offices as their base of operation when working in Washington, D.C. Mail, telephone and fax messages may be received there:

Tel: (202) 786-2817, 786-2818

Fax: (202) 786-2819

Mail: Smithsonian Institution
900 Jefferson Drive
Washington, D.C. 20560
STRI - Suite 2207

Ira Rubinoff
Director

Christmas Party / Fiesta de Navidad

The STRI Christmas Party will be held on Friday, December 15, at 4:00 p.m. on the Tivoli grounds. There will be an empty table at the party for contributions to the San Antonio de Padua Church *Bread for the Poor Program*. You are all invited to bring one item or more, if possible, from the following:

- cooking oil (small bottles)
- sugar, salt, coffee, tea
- tomato sauce or tomato paste
- toilet articles
- dehydrated soup or dry beans
- canned meat or vegetables
- canned evaporated milk
- a toy (indicating for what sex and age).

If you wish to contribute in advance, there will be a box in the Tivoli Building, next to the photocopy machines. Let's all get into the Christmas spirit!

The official tour of the new Tupper Center for all STRI employees will take place during the party.

Nuestra Fiesta de Navidad se llevará a cabo el viernes, 15 de diciembre, a las 4 p.m. en los terrenos de Tivoli. Habrá una mesa vacía donde todos los miembros de la comunidad de STRI podrán depositar, si lo desean, un artículo o más de cualquiera de lo siguiente:

- aceite de cocinar (pequeño)
- azúcar, sal, café, té
- lentejas o frijoles o sopas de paquete
- pasta o salsa de tomate
- artículos de tocador
- vegetales enlatados o conservas
- leche evaporada
- juguetes (indicar para que sexo y edad).

Estas donaciones se le entregarán al programa *Pan de los Pobres* de la Iglesia de San Antonio de Padua. Si desean pueden traer su contribución al Tivoli antes de la fiesta. Unase al espíritu navideño!

Se está programando una visita guiada por el nuevo Centro Tupper para todos los empleados de STRI durante la fiesta.

WHAT YOU SHOULD KNOW

Paz y Salvos

All staff and visitors are advised to give thought to their travel dates and avoid any later changes since 'paz y salvos' are now only good for 5 days (start counting from the day you give Celideth Mendoza your 'paz y salvo' request).

Se les solicita a todo el personal y visitantes de STRI que programen sus viajes para estas fiestas navideñas con debida anticipación. Los 'paz y salvos' son válidos por 5 días solamente, contados a partir del momento que se introduzca la solicitud.

From Accounting

The Accounting Department has been receiving invoices from DHL for services which have not been previously obligated. Thus, we remind you that before using the services of DHL, a requisition must be filled out in order to obligate the funds. Although this procedure applies to any fund, it is particularly important when federal funds are involved.

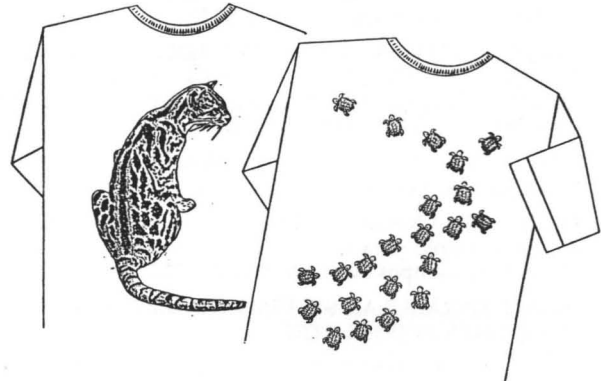
STRI Calendar

DECEMBER 1989						
S	M	T	W	T	F	S
					1	2
3	4	5	6	7	8	9
10	11	12	13	14	15	16
17	18	19	20	21	22	23
24	25	26	27	28	29	30
31						

December 5 - The Scientific Staff Meeting will take place in the Meeting Room of the Tupper Center, below the Cafeteria.

- December 8 - Mother's Day, a STRI holiday.
- December 12 - Academic Board Meeting.
- December 15 - STRI Christmas Party.
- December 25 - Christmas Day, a STRI holiday.

For Sale - STRI MiniBookstore



A.N.C.O.N. T-shirts

- Turtles (white) in S, M, L, XL & children sizes
- Fish (white) in S, M, L, XL
- Ocelot (black, turquoise, beige) in S, M, L, XL.

Computer Tips

- Hewlett-Packard Co. Laser-Jet printers, as well as many other makes, can cause considerable havoc on marginal power systems. A substantial current draw occurs every 39 seconds or so with the Laser-Jet printers. This surge is not a fault. It is necessary for a heating element that keeps the printer ready to respond to print commands.
- It is easy enough to check whether your laser printer is causing a major voltage fluctuation; just plug a digital volt meter into the same line and see how much the voltage fluctuates. If you have plenty of power available, the extra 5A draw will cause only a minor voltage drop, but if you have lots of equipment installed on that line the drop could be substantial, several volts or more.
- If you are having problems because of the laser printer, what's the remedy? Your only choices are to upgrade the line, try filtering the power using a power conditioner, or plug the laser printer into a different circuit.

— STRI LIBRARY - New Books List —

THE BIRDS OF EGYPT (SM Goodman & PL Meininger, eds., 1989)QL692.E3B57 1989X STRI.

ENCICLOPEDIA GENERAL DEL MAR (JM Martinez-Hidalgo, ed., 1957)Ref AE61.E56 STRI.

FARMING MARINE ORGANISMS LOW IN THE FOOD CHAIN : A MULTIDISCIPLINARY APPROACH TO EDIBLE SEAWEED, MUSSEL AND CLAM PRODUCTION (P. Korringa, 1976)SH370.K84 STRI.

THE GREENING OF GONDWANA (ME White, 1986)QE948.A1W47 1986X STRI.

EL GUACIMO (Guazuma ulmifolia Lam.) : especie forestal de uso multiple para los tropicos humedos (C. Santander Flores & JJ Campos Arce, 1988)SD247.S23 1988 STRI.

INSECT SPIRACULAR SYSTEMS (TB Nikan & VV Khole, 1989)QL495.N55 1989X STRI.

THE MOSQUITOES OF NORTH AND CENTRAL AMERICA AND THE WEST INDIES, v. II Plates (LO Howard et al, 1912-17)QL536.H85X STRI.

ONTOGENY AND SYSTEMATICS (CJ Humphries, ed., 1988)QH491.O575 1988X STRI.

PHOSPHORUS IN FRESHWATER ECOSYSTEMS : PROCEEDINGS OF A SYMPOSIUM HELD IN UPPSALA, SWEDEN, 25-28 SEPT. 1985 (G. Perrson & M. Jansson, eds., 1988)QH545.P5P48 1988X STRI.

PLANT PHENO-MORPHOLOGICAL STUDIES IN MEDITERRANEAN TYPE ECOSYSTEMS (G. Orshan, ed., 1989)QK314.5.P53 1989X STRI.

POLLEN : ILLUSTRATIONS AND SCANNING ELECTRONMICROGRAPHS (Y. Iwanami et al, 1988)QK658.I96 1988 STRI.

RUDISTS OF JAMAICA (LJ Chubb, 1971)QE734.C55 1971 STRI.

SCALPELLID BARNACLES (CIRRIPIEDIA) OF FLORIDA AND OF SURROUNDING WATERS (NE Weisbord, 1977)QL444.C58W44X 1977 STRI.

DIE SCHILLERFARBEN BEI INSEKTEN UND VOGELN (Biederman, W, 1904)QL767.B58 1904 STRI.

SEAWEED CULTIVATION FOR RENEWABLE RESOURCES (KT Bird & PH Benson, editors, 1978)SH390.7.S43 1987X STRI.

SELF-ASSEMBLING ARCHITECTURE (JE Varner, editor, 1988)QH491.S45 1988X STRI.

SIGNAL TRANSDUCTION IN CYTOPLASMIC ORGANIZATION AND CELL MOTILITY : PROCEEDINGS OF A UCLA SYMPOSIUM HELD IN LAKE TAHOE,

CALIFORNIA, FEBRUARY 15-21, 1987 (P. Satir et al, eds., 1988)QH604.2.S54 1988X STRI.

THE SWARTKOPS ESTUARY : PROCEEDINGS OF A SYMPOSIUM HELD ON 14 AND 15 SEPTEMBER 1987 AT THE UNIVERSITY OF PORT ELIZABETH (D. Baird et al, editors, 1988)QH541.5.E8S97 1988 STRI.

THE TORRE-BUENO GLOSSARY OF ENTOMOLOGY (SW Nichols, compiler, 1989)Ref QL462.3.T67 1989X STRI.

TOWARD THE PHYLOGENY OF A FOSSIL SPECIES FLOCK : SEMIONOTID FISHES FROM A LAKE DEPOSIT IN THE EARLY JURASSIC TOWACO FORMATION, NEWARK BASIN (AR McCune, 1987)QE852.S4M13 1987 STRI.

VEGETATION SCIENCE APPLICATIONS FOR RANGELAND ANALYSIS AND MANAGEMENT (PT Tueller, 1987)SF85.V42 1988 STRI.

VOLCANIC HAZARDS : ASSESSMENT AND MONITORING (JH Latter, editor, 1989)QE527.5.V65 1989X STRI.

WAYSIDE TREES OF MALAYA (EJH Corner, 1988)QK365.C68 1988X STRI.

— HUMOR —



Early piñatas