

SEMINAR NEWS

No luncheon seminar on Tuesday, April 23. Check your bulletin boards for a last minute announcement.

ARRIVALS & DEPARTURES

N. MANOKARAN, SAW LENG GUAN and MOHD NASIR BIN HUSIN, of the Forest Research Institute of Malaysia, arrived last week to study the methods used in the Hubbell Project on BCI. A study similar to the Hubbell project will be set up at the Pasoh Forest Reserve in Malaysia and will permit comparisons of forest dynamics between the Old and New World tropical rain forests. The Pasoh study is being supported by an NSF grant to Peter Ashton, of the Harvard Arboretum, and to Steve Hubbell. Our visitors will stay at BCI until May 6th when they will leave for the U.S. to visit the Ashton and Hubbell labs.

ANA DITTEL, professor at the CENTRO DE INVESTIGACIONES MARINAS (CIMAR), University of Costa Rica will visit Panama next week to collaborate with colleagues at STRI, and to attend a regional seminar on marine resources and fisheries being sponsored by the Partners of the Americas (Panama-Delaware).

April 21 - Arriving, P. DEVRIES and M. TIBBES, Harcourt Films, Ltd., London, to begin making a documentary film at BCI. They will be joined later by JEREMY MARRE and JACKIE BELWOOD, and will be on BCI until mid-May.

April 23 - Arriving, KEN CLIFTON and JOHN JOLLY, to work on R. Warner's project in the San Blas.

April 25 - Arriving, DANIEL BRAZEAU, to work with H. Lasker in the San Blas.

Leaving this week for D.C. to attend the Smithsonian's Tropical Biology Conference from April 23-27, and do other official business are:

- IRA RUBINOFF, to attend also the Congressional Hearings in D.C. and the 2nd Conference on Conservation Biology, and will return May 10.
- JIM KARR (returns April 29);
- MARTIN MOYNIHAN (returns in 1 wk);
- OLGA LINARES (returns in about 1 wk);
- GILBERTO OCAÑA (returns in 1 wk);
- NEAL SMITH (returns May 4th);
- HARIS LESSIOS (returns April 28);
- STAN RAND (returns May 8th);
- STEVE HUBBELL and MARY JANE WEST-EBERHARD.

AWAY NEXT WEEK

ANNETTE AIELLO will be hospitalized April 23 for elective surgery. She will be at the San Fernando Clinic for approximately one week.

LIBRARY NEWS

MARCIA SMITH will be leaving the STRI Library. Her last day will be Tuesday evening, April 30. She will be pursuing efforts to find a position in Biomedical Engineering in the U.S.

SYLVIA CHURGIN will be on administrative leave from April 25 - May 3 to attend the meetings of the Smithsonian Libraries in Washington, D.C. Following the meeting she will take a week's vacation and will return to STRI May 13.

ANGEL AGUIRRE will be on leave until April 29.

New Books:

-BEHAVIORAL EVOLUTION AND INTEGRATIVE LEVELS (Gary Greenberg and Ether Tobacker eds., 1984. BF 671 B38 1984X STRI.

-CONTRIBUTIONS IN QUATERNARY VERTEBRATE PALEONTOLOGY (Hugh H. Genoways and Mary R. Dawson, eds., 1984) QE 841 C76 1984 STRI.

-ECOLOGY OF INSECT POPULATIONS IN THEORY AND PRACTICE (L.C. Clark et al eds., 1967) QL 497 E19 STRI.

-ECOLOGICAL BIOGEOGRAPHY OF AUSTRALIA (Allen Keast ed., 1981) QH 197 E 19 STRI.

-MARINE ALGAE OF THE EASTERN TROPICAL AND SUBTROPICAL COASTS OF THE AMERICAS (William R. Taylor, 1983) QK 567 T 247 STRI.

-MODERN OPTICAL ENGINEERING (Warren J. Smith, 1966) TS 513 S55 STRI.

-MEANING OF PRIMATE SIGNALS (Ron Herre and Vernon Reynolds eds., 1984) QL 737 P9 1984X STRI).

FAREWELL PARTY***DESPEDIDA

A farewell party on BCI Friday, April 19 honored PATROCINIO ESTURAIN, who retired after 17 years as Food Service Worker on the island.

El viernes, 19 de abril se celebró una fiesta en Barro Colorado en honor de PATROCINIO ESTURAIN, quien se jubiló este mes después de haber trabajado por 17 años como cocinero en la isla.

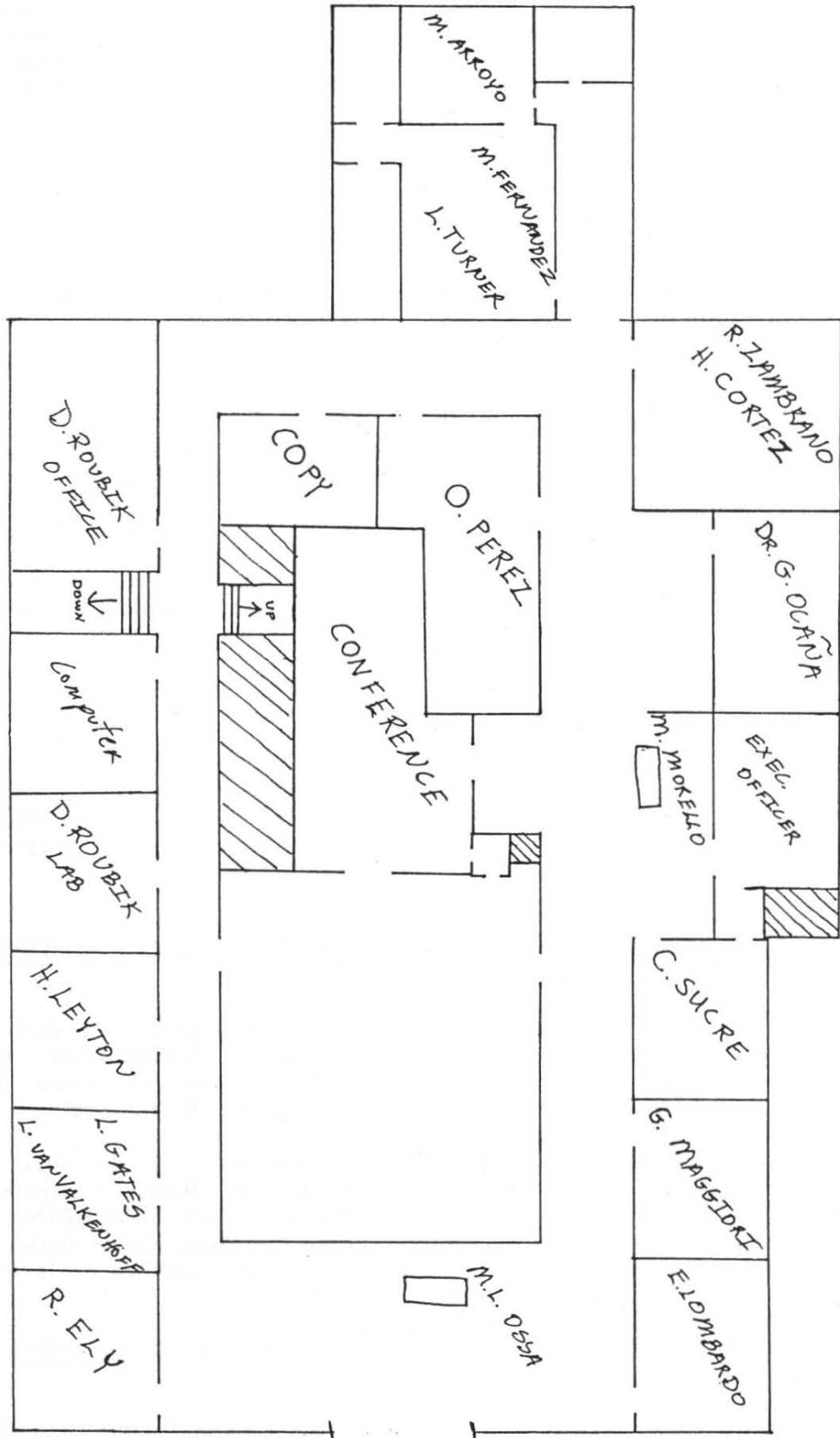
OFFICES MOVES-CAMBIOS DE OFICINAS

Many offices in the first floor of the Tivoli have been moved. For new locations see diagram on the back.

Muchas de las oficinas en el primer piso del Tivoli han cambiado de lugar. El plano al dorso incluye la nueva localización de cada persona.



NEW TIVOLI FLOOR PLAN - PLANO DEL TIVOLI



Entrance

Entrada