

From the director

Thank you all for the dedicated and professional effort which you made to ensure the visit of the Smithsonian National Board was a success. I was extremely proud to receive compliments from visitors about your efficiency and intelligence. They understood that our impressive scientific accomplishments could never have been achieved without the world class administrative support and coordination which you demonstrated. The large group presented some unprecedented challenges of logistics and programmatic presentation. You were all up to the task with imagination, skill and cooperation. **Thank you for a job well done.**

Del director

Gracias a todos por sus esfuerzos, dedicación y profesionalismo haciendo que fuera posible que la visita de la Junta de Síndicos del Smithsonian fuera un éxito. Yo me sentí extremadamente orgulloso cuando recibí los elogios de parte de los visitantes sobre la eficiencia e inteligencia de ustedes. Ellos entendieron que nuestros impresionantes logros científicos nunca se hubieran podido llevar a cabo sin el apoyo administrativo de primera y la coordinación que todos ustedes demostraron. Este numeroso grupo presentó retos de logística y presentación programática. Todos ustedes estuvieron a la altura con imaginación, habilidad y cooperación. **Gracias por un trabajo bien hecho.**



Smithsonian Tropical Research Institute, Panamá

www.stri.org

February 9, 2001



SI Board: talks, tours and sight seeing

Junta de SI: conferencias, viajes y visitas

During the SI Board's stay in Panama from January 31 to February 5, its members visited various STRI facilities, attended briefings given by our scientists and specialists in the community, and visited interesting sites in Panama. In the photos (left) SI National Board member Charles Moore and Secretary Lawrence Small listen to Alberto Palleroni from the Peregrine Fund, describe the project to reintroduce the Harpy Eagle in Panama. Palleroni was accompanied by "Jacko", a young male Harpy Eagle in recovery from a wing injury. On the right, undersecretary Dennis O'Connor and wife Anne prepare to cross Miraflores Locks on a VIP tour offered by the Panama Canal Administration.

Durante la visita de la Junta de Síndicos del Smithsonian a Panamá del 31 de enero al 5 de febrero, sus miembros visitaron todas las instalaciones de STRI en Panamá, atendieron a conferencias de científicos de STRI y autoridades locales, y visitaron puntos de interés. En las fotos (izquierda) Charles Moore, miembro de la Junta de SI y el secretario Lawrence Small escuchan a Alberto Palleroni del Fondo Peregrino, sobre el proyecto para re-introducir el águila harpía en Panamá. Palleroni estaba acompañado de "Jacko", águila harpía macho que se encuentra en recuperación de una herida en el ala. A la derecha, el subsecretario Dennis O'Connor y su esposa Anne se preparan para cruzar las Exclusas de Miraflores, durante la visita VIP que ofreció la Administración del Canal de Panamá.

National Zoological Park emeritus director Michael H. Robinson gave a seminar on "Why the tropics are important," to SI officials and visitors on BCI.

Michael H. Robinson, director emérito del Parque Zoológico Nacional de Estados Unidos dió un seminario sobre "Por qué los trópicos son importantes" a los directivos y visitantes del Smithsonian, en Barro Colorado.



Tupper seminar

Tuesday, February 13, noon seminar speaker will be Ken Johnson, Scripps Institute of Oceanography
Ecology, evolution, and environment in the Cenozoic history of Caribbean coral reefs

Bambi seminar

Thursday, February 15, Bambi seminar speaker will be Stephanie Bohlman, University of Washington
More than just pretty pictures: What does remote sensing reveal about tropical forest functioning?

Arrivals

Elan Wang, University of California. Feb 9 - Jul 31, to work with Katharine Milton on the population dynamics on the howler monkey population, on BCI.

Paula Campanello from Argentina, Feb 15 - Mar 30, to work with Guillermo Goldstein on the functional convergence and constraints in regulation of transpiration and carbon assimilation in tropical forest canopy trees, at Tupper and BCI.

David Woodruff from the United States, Feb 15 - Mar 31, to work with Guillermo Goldstein on the functional convergence and constraints in regulation of transpiration and carbon assimilation in tropical forest canopy trees, at Tupper and BCI.

Melvin Tyree, University of Vermont, Feb 16 - Mar 12, to work on the integration of canopy and hydraulic architecture in *Psychotria* species along light and moisture gradients.

Departures

Laura Flores, Feb 16-24, to Bolivia, to participate, by invitation in a workshop organized by Conservation International on Parque Nacional Madidi.



SI members of the Board, SI and STRI officials traveled to Bocas del Toro to visit STRI's research station on Isla Colón. The visitors had the opportunity to dive in the Caribbean and learn about research projects and educational programs in this province.



Miembros de la Junta de Síndicos del Smithsonian y directivos de SI y STRI viajaron a Bocas del Toro para visitar la estación marina de STRI en Isla Colón. Los visitantes tuvieron la oportunidad de bucear en aguas del Caribe y conocer sobre los proyectos de investigación y programas educativos que se llevan a cabo en esta provincia.



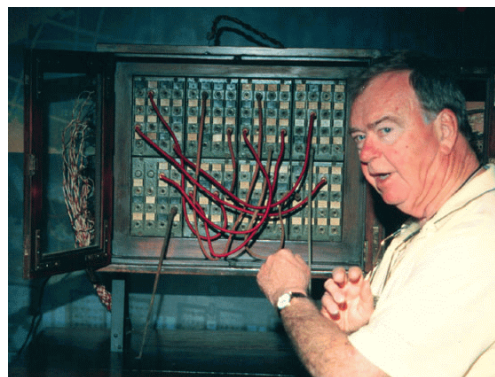
SI National Board member Furman Mosely and wife Susan walked through the BCI forest on one of the many visits guided by STRI scientists.

Furman Mosely, miembro de la Junta de Síndicos de SI y su esposa Susan caminan a través del bosque de Barro Colorado, en una de las visitas guiadas por científicos de STRI.



In Gamboa, on a ride through the forest with STRI staff scientist Nélica Gómez.

En Gamboa, en un paseo a través del bosque con Nélica Gómez, investigadora permanente de STRI.



SI National Board member Frank Daniels Jr. at the Panama Canal Museum

Frank Daniels Jr., miembro de la Junta, en el Museo del Canal de Panamá.

Photos: Marcos A. Guerra

New publications

Winter, Klaus, Garcia, Milton, Lovelock, Catherine, Gottsberger, Richard, and Popp, Marianne. 2000. "Responses of model community of two tropical tree species to elevated atmospheric CO₂: growth on unfertilized soil." *Flora* 195: 289-302.

STRI in the news

"Las montañas de ayer", por Esther M. de Arjona. *Ellas en La Prensa*, viernes 9 de febrero de 2001, p. 32, 34.