

Supporting information

Human bone paleoproteomics utilizing the SP3 method to maximize detected proteins and reduce humics

Timothy P. Cleland^{1*}

¹Museum Conservation Institute, Smithsonian Institution, Suitland, MD 20746, USA

Supporting Information Table of Contents

Table S1: Protein accessions, peptide, and peptide spectral match counts for each sample filtered at 1% FDR (separate xlsx).

Table S2: Protein groups exported from Metamorpheus (separate xlsx).

Table S3: Protein groups filtered at 1% FDR with contaminants and decoys removed (separate xlsx).

Figure S1. Acetonitrile immiscibility between EDTA and 400-200-4. SeraMag beads suspend in the aqueous phase clearly showing the separate layers. Top left to right) EDTA diluted 1x, 2x, 10x, 50x, 100x with water and combined with acetonitrile. Bottom left to right) 400-200-4 diluted 1x, 2x, 10x, 50x, and 100x combined with acetonitrile.

Figure S2. Absorbance plots for humic substances of EDTA raw extraction (.raw) and controls (.con).

Figure S3. Absorbance plot for humic substances of 400-200-4 raw extraction (.raw) and controls (.con).

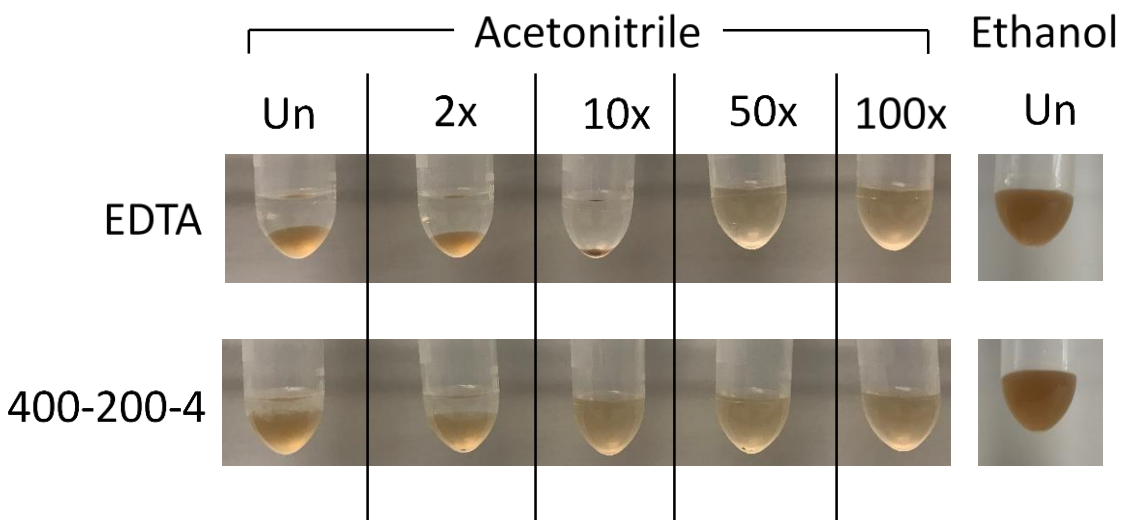


Figure S1. Acetonitrile immiscibility between EDTA and 400-200-4. SeraMag beads suspend in the aqueous phase clearly showing the separate layers. Top left to right) EDTA undiluted (Un) or diluted 2x, 10x, 50x, 100x with water and combined with acetonitrile. Bottom left to right) 400-200-4 undiluted (Un) or diluted 2x, 10x, 50x, and 100x combined with acetonitrile. Undiluted EDTA and 400-200-4 is completely miscible with ethanol.

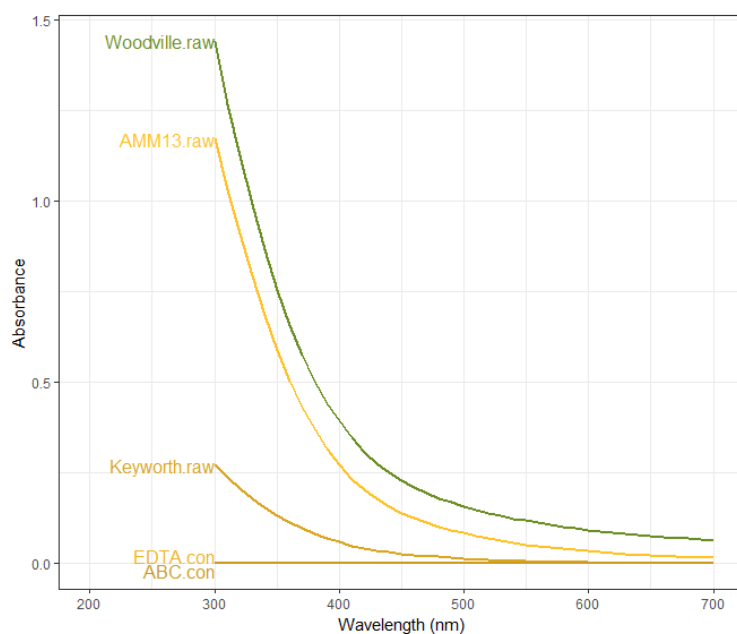


Figure S2. Absorbance plots for humic substances of EDTA raw extraction (.raw) and controls (.con).

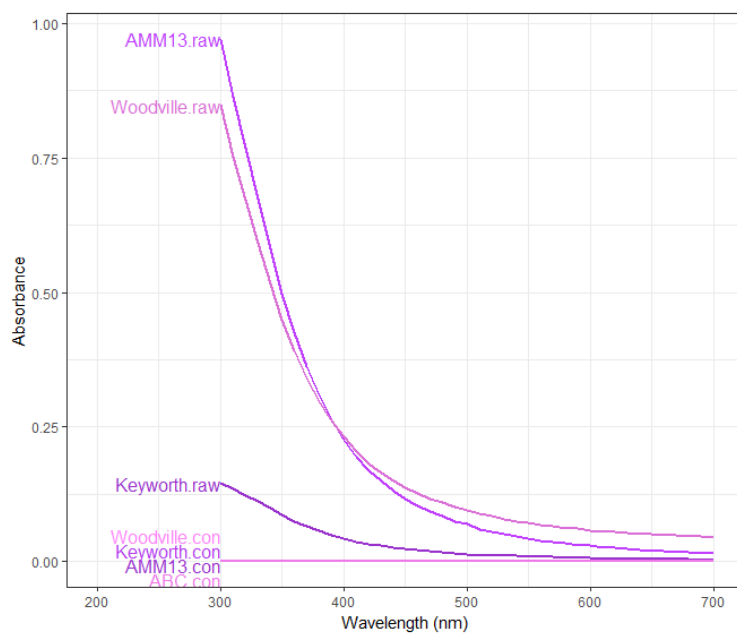


Figure S3. Absorbance plot for humic substances of 400-200-4 raw extraction (.raw) and controls (.con).