

A Palynological Study of the Liabeae (Asteraceae).

*Harold Robinson
and Clodomiro Marticorena*



SMITHSONIAN INSTITUTION PRESS

City of Washington

1986

ABSTRACT

Robinson, Harold, and Clodomiro Marticorena. A Palynological Study of the Liabeae (Asteraceae). *Smithsonian Contributions to Botany*, number 64, 50 pages, 208 figures, 1986.—Surface features and internal structure of the spines in the pollen of the Liabeae are illustrated by scanning electron microscopy and drawings made from oil immersion light microscopy. Observations are presented for all 16 genera of the tribe, *Paranephelius* and *Pseudonosoris* of the Paranephelinae, *Astroliabum*, *Bishopanthus*, *Cacosmia*, *Chionopappus*, *Ferreyranthus*, *Liabellum*, *Liabum*, *Microliabum*, *Oligactis*, and *Sinclairia* of the Liabinae, and *Chrysactinium*, *Erato*, *Munnozia* and *Philoglossa* of the Munnoziinae. No examples of echinolophate pollen are found in the tribe, but irregular groupings of spines are found to be characteristic of all but *Munnozia* and *Chrysactinium* in the Munnoziinae and *Paranephelius* and *Pseudonosoris* in the Paranephelinae. The distribution of caveate forms in the Liabeae is clarified. The presence of a large cavus-like space interrupted by thin basal columellae is confirmed in the genus *Paranephelius*, correcting early observations showing the genus as an exception to the basic uniformity of exine structure in the tribe. However, subcaveate forms have been discovered in the tribe in the genus *Munnozia*. SEM study of broken tecta in the genus *Munnozia* show previously unsuspected great potential for variation between closely related species and species groups. The structure of the exine supports views derived from floral structures regarding relationships with other tribes. No support is seen for a phyletic position near the Senecioneae, and closest similarity is seen to the Vernonieae. A basic difference is discovered in the arrangement of the basal columellae between the Liabeae and the Vernonieae, being clustered or forming a hollow cylinder under each spine in the former but forming a single solid basal columella under each spine in the most nearly comparable members of the latter. Genera of the Vernonieae shown for comparison include the non-lophate *Blanchetia*, *Pseudostiffia*, and *Vernonia*, and the lophate *Bishopalea*, *Heterocypsela*, and *Phyllocephalum*.

OFFICIAL PUBLICATION DATE is handstamped in a limited number of initial copies and is recorded in the Institution's annual report, *Smithsonian Year*. SERIES COVER DESIGN: Leaf clearing from the katsura tree *Cercidiphyllum japonicum* Siebold and Zuccarini.

Library of Congress Cataloging in Publication Data

Robinson, Harold Ernest, 1932-

A palynological study of the Liabeae (Asteraceae).

(Smithsonian contributions to botany ; no. 64)

Supt. of Docs. no. SI 1.29:64

Bibliography: p.

1. Compositae—Pollen—Morphology—Atlases. 2. Compositae—Classification. 3. Palynology—Taxonomy. I. Marticorena, Clodomiro. II. Title. III. Title: Liabeae (Asteraceae) IV. Series.

QK1.S2747 no. 64 [QK495.C74] 581 s [583'.55] 86-600032

Contents

	<i>Page</i>
Introduction	1
Materials and Methods	2
Acknowledgments	3
Pollen Structure of the Liabeae	3
PARANEPHELIINAE	4
LIABINAE	5
MUNNOZIINAE	6
Key to Types of Liabeae Pollen	9
Palynological Evidence on the Relationships of the Liabeae in the Asteraceae	10
Appendix	14
Literature Cited	21
Figures	23

A Palynological Study of the Liabeae (Asteraceae)

*Harold Robinson
and Clodomiro Marticorena*

Introduction

A recent series of studies (Robinson and Brettell, 1973a, 1974; Robinson, 1978, 1983a) has explored the taxonomy and evolution of the geographically restricted neotropical tribe Liabeae, using mostly macroscopic and some microscopic structural features. Most recently the chromosome numbers of the tribe have been reviewed (Robinson et al., 1985). The present study of the pollen continues the effort to improve understanding of this previously most poorly understood tribe of the Asteraceae whose members were neither placed together nor recognized at the tribal level in the traditional treatments of the family. A summary of the pollen characters of the tribe is given based on examination of over half the species by at least oil immersion light microscopy. Generic patterns are noted, and detailed taxonomically significant variations in exine structure in closely related species groups are documented. The views presented in the recent studies by the senior author regarding relationships and distinctions between the Liabeae and other tribes such as the Senecioneae and Vernonieae are extended by knowledge of the pollen structure.

The Liabeae was not recognized at the tribal level or properly placed together in a related group until this century (Rydberg, 1927; Blake, 1935; Sandwith, 1956; Cabrera, 1954; Robinson and Brettell, 1973a, 1974; Robinson, 1978, 1983a). In the earliest classifications the members of the tribe with a capillary pappus were placed in the Vernonieae (Cassini, 1828). Later these were placed in the Senecioneae (Bentham and Hooker, 1873) while genera with reduced or plumose pappus forms were described in various other tribes such as the Heliantheae, Helenieae, and Mutisieae. The history of the tribe is dealt with more completely by Robinson (1983a).

The restricted neotropical distribution of the Liabeae and the failure to treat the group as taxonomically distinct resulted in their omission from the earliest palynological studies of the Asteraceae. It was in the study by Stix (1960) that the group was first included with observations on 14 species that are presently considered members of the genera *Liabum*, *Austroliabum*, *Liabellum*, *Munnozia*, *Sinclairia*, and *Paranephelius*. The study by Stix cited some variation in internal structure of the tectum in the pollen of the tribe. In 1966, the pollen of *Cacosmia* was described and compared with that of *Liabum* by Skvarla and Turner. Light microscope oil immersion observations of thick sections of *Chionopappus* pollen were used by Marticorena and Parra (1974) to confirm the relationship of that

Harold Robinson, Department of Botany, National Museum of Natural History, Smithsonian Institution, Washington, D.C. 20560. Clodomiro Marticorena, Departamento de Botánica, Instituto de Biología, Universidad de Concepción, Chile.

genus to *Liabum*. Regularity of spine distribution and some variation in size of grains were mentioned by Robinson and Brettell (1974). The results of transmission electron microscope studies were included in the review of the family by Skvarla et al. (1977) where apparent variations between non-caveate forms with basal columellae and forms without basal columellae were noted in the tribe. The apparently anomalous *Paranephelium* was shown to possess thin basal columellae by Feuer and Dillon in an oral presentation (1982). It remains for the present study to broaden the survey of the tribe to include all 16 genera, introduce results of scanning electron microscope observations of whole and broken pollen grains, and to compare the results with conclusions from the simultaneous phyletic studies of the tribe (Robinson, 1983a).

Materials and Methods

A variety of techniques have been used for the study of pollen of the Liabeae. Many initial observations have been made of material mounted in Hoyer's solution (50 cm³ distilled water; 30 grams Gum Arabic, U.S.P. Flake; 200 grams Chloral hydrate; 20 cm³ Glycerin). The medium is regarded as temporary, eventually altering the index of refraction and making the exine essentially invisible. Whole grains have also been mounted in glycerin jelly. Paraffin sections have been prepared by Marticorena. All the above material was viewed with the light microscope with $\times 40$ or oil immersion objectives. Results were comparable in detail to those by Stix (1960). The sections, which are often fragmentary and folded, have been used in the present study primarily for reference and only one photograph of a section of *Chionopappus* prepared during the study of Marticorena and Parra (1974), is presented herein. The slides of whole grains were used by Marticorena to produce ink drawings representing the internal spine structure in vertical view of over 100 species. These were grouped to show a range of columellar variation under different spines in grains from single col-

lections. Representatives (Figures 1-40), redrawn from the Marticorena camera lucida drawings, are included herein to provide the reader with a more convenient survey of the variation of such structure in the tribe than is available in the SEM micrographs.

No observations have been made in this study with the transmission electron microscope, but data from previous TEM studies by Skvarla et al. (1966, 1977) and Tomb (1975) are cited. In spite of some artifacts produced by breakage, the use of broken grains has proven much superior to TEM preparations for obtaining an understanding of the three-dimensional columellar structure.

A primary effort in the present study has involved use of the scanning electron microscope (SEM). Pollen samples have been removed from herbarium material or in one case from a living plant. In a few cases the pollen was not acetolized, but most samples were acetolized according to the procedure outlined in Erdtman (1966). Acetolized grains were fractured by crushing with the edge of a glass slide, or more often while still in the centrifuge tube by using a needle. All samples were pipetted on to cover slips and allowed to dry. The samples on coverslips were thinly coated using an EFFA carbon coater, involving evaporation by the carbon-arc technique. They were then coated with gold-palladium using a DC sputtering unit. Specimens were examined and photographed with Cambridge Stereoscan MK IIA, Cambridge Stereoscan S4-10, or Coates and Welter field emission microscopes.

The terminology for pollen structure used in the present paper follows mostly that of Skvarla et al. (1977). Sizes of pollen grains are given over a broad range to account for variations due to method of preparation. Grains mounted in Hoyer's solution tend to swell most, those in glycerine jelly are about the same size or slightly smaller than those in Hoyer's, the grains in water are distinctly smaller, and air- or vacuum-dried material, such as that examined by SEM, is completely unexpanded and may be as small as $\frac{2}{3}$ the Hoyer's Solution diameter. Actual overlap in

sizes in various genera should be less in any one medium than indicated by the general figures given. Measurements cited for the Liabeae pollen are of the equatorial diameters, but none of the grains of the tribe are sufficiently oblong or oblate in shape to produce a markedly different polar diameters. Since only the general sizes are mentioned for the Vernoniaceae the shorter polar diameters of the larger oblate grains of that tribe are not noted. Measurements in the study exclude the projecting parts of the spines. Specimens used in the study are listed in the appendix.

ACKNOWLEDGMENTS.—The SEM micrographs were prepared by the SEM Laboratory (supervised by Walter Brown) at the National Museum of Natural History (NMNH), Smithsonian Institution. The microscopes were operated by Mary Jacque Mann and Susann Braden. Dr. Joan Nowicke is to be thanked for use of the facilities of the Palynological Laboratory in the NMNH Department of Botany, and for suggestions and help in the traditional methods of breaking pollen grains. Janice Bittner of the Palynology Laboratory and Andrea Sessions helped by processing the pollen. Brian Kahn has helped in preparation of the plates.

Pollen Structure of the Liabeae

Stix (1960) in the initial study of pollen of the Liabeae, recognized three variations in the tribe. The first or andromachioides-type has large columellae restricted to the area under the spines, and most closely agrees with the type termed "Liaboid" by Skvarla et al. (1977). The species listed with this pollen type by Stix include five species now placed in *Sinclairia*, two species now placed in *Liabellum*, two species of *Austroliabum*, and *Munnozia rusbyi*.

The second pollen type of Stix (1960), the umbellata-type, has smaller columellae under each spine and some basal columellae in the intervening parts of the exine. The three species cited by Stix include one now known as *Munnozia hastifolia* and the only two true *Liabum* species in her study. The pollen type is treated herein as a

comparatively minor variation of the first type. The different examples seem to occur in species that are closely related to others of the andromachioides-type with larger columellae under the spines.

The remaining pollen type of Stix (1960), the ovatum-type, has the columellae partially to completely separate from the footlayer. The columellae have the form seen in the upper layer of the first and second types. This pollen type is cited by Stix from *Liabum ovatum*, which is a member of the genus *Paranephelius*. The type was examined by Skvarla et al. (1977) on the basis of a specimen presently determined as *P. uniflora*, and the suggestion of a cavus and the more senecoid rather than anthemoid nature was emphasized. The apparent anomaly of a senecoid pollen type in the Liabeae was partially resolved in the study by Feuer and Dillon (1982), which discovered slender columellae under the spines that connect with the foot layer.

The present understanding of the pollen structure in the Liabeae is reviewed herein according to the revised concept of the tribe with 16 genera distributed in three subtribes, Paranepheleinae, Liabinae, and Munnoziinae (Robinson, 1983a,b).

The pollen of the Liabeae (Figures 1–180) is generally characterized as follows:

Tricolpate; 25–50 μm in diameter, spherical to slightly oblate-spheroid or in some cases where colpi are closed appearing oblong; ecto-apertures meridionally elongate (Figures 41, 50, 69, 74, 104, 124) and endo-apertures transversely short-oval (Figure 121); echinate with spines often irregularly distributed and variously confluent with each other at the base (Figures 60, 62, 64, 67, 94), sometimes regularly dispersed on the intercolpar area (Figures 49, 50, 140, 141, 147, 148, 150). Internal structure basically with two levels (Figures 68, 88, 132, 179, 180) of columellae. Usually with few (Figures 1, 2, 46) to many (Figures 156, 160) large basal columellae clustered under spine bases, rarely with additional basal columellae dispersed in inter-spinal areas (Figure 118), columellae under spines sometimes coalesced into hollow cylinders (Fig-

ures 175, 176); basal columellae sometimes reduced or separated from foot layer (Figures 162–167) with partial to complete development of cavus; upper layer of columellae usually regular, short, dense, with upper ends forming a perforate tectum, and covered below by unsupported or partially supported internal tecta forming a somewhat undulating or papillose surface in interspinal areas.

Pollen size and spine distribution show variation in the Liabae. The generic pair of *Liabum* and *Oligactis* has the smallest average pollen size in the tribe at 25–35 μm . A number of other members of the subtribe Liabinae, such as *Cacosmia* and *Ferreyranthus*, can have pollen as small, 27–30 μm and 29–35 μm respectively, but one species of the latter ranges up to 43 μm . Still, in other Liabinae, such as *Austroliabum*, 33–40 μm , *Chionopappus*, 37–40 μm , and especially *Sinclairia*, 35–55 μm and *Liabellum*, 47–52 μm , the pollen is characteristically larger. The members of the other two subtribes are more consistent in size. Both genera of the Paranepheleinae have pollen mostly 35–45 μm in diameter. The four genera of the Munnoziinae, with rare exceptions, range from 30–40 μm in diameter. The primary exception is the typical element of *Munnozia* that ranges between 37–45 μm in diameter. For a sampling of size measurements see the appendix.

Many genera of the Liabae have a type of uneven distribution of the spines on the pollen that seems unique in the family. In these forms the spines seem to be in groups, sometimes in pairs or in short crests of three with confluent bases. This is especially evident in SEM views of some unacetolized grains (Figures 62, 63). Such grains seem to be best characterized by the irregular placement of the spines along the lateral margins of the colpi (Figures 72, 74). This pollen form is found throughout the subtribe Liabinae and in *Erato* and *Philoglossa* of the Munnoziinae, but it is lacking in *Munnozia* and *Chrysactinium* of the Munnoziinae and in the Paranepheleinae. The distribution in the tribe suggests that is the plesiomorphic condition in the tribe. It is correlated rather closely in its distribution in the tribe

with the apparent plesiomorphic condition of the basal columellae under the spines.

The spines are more evenly disposed on the surfaces of the pollen in two pairs of genera in two separate, comparatively derived groups, *Munnozia* and *Chrysactinium* in the Munnoziinae, and *Paranephelius* and *Pseudonosoris* in the Paranepheleinae. This arrangement is reflected in the regularly aligned spines along the lateral margins of the colpi (Figures 41, 50). The pattern is more evident in a preparation of unacetolized grains of *Paranephelius* (Figure 49), where the depressions between the bases of each of the spines are equal in spite of some displacement seen in the spines. The character can be observed under the light microscope. The separate and derived nature of the regular spine pattern in the two groups is indicated by the retention of the irregular pattern in two of the genera of the Munnoziinae and by the slight evidence of irregularity that survives along the margin of the colpus in *Paranephelius*.

There is greater variation in the Liabae in the internal structures of the pollen than in external features. The variations between many species of *Munnozia* are perhaps the greatest thus far known for internal exine structure of pollen in any such closely related group. Variations include tendencies toward the caveate condition seen in the Paranepheleinae, *Philoglossa*, and *Munnozia*, the fusion of columellae into hollow cylinders in *Chrysactinium* and *Munnozia*, and the production of an anomalous inner series of columellae seen in *Munnozia* subgenus *Kastnera*. These and other details of pollen structure in the Liabae are best reviewed in each subtribe individually. The subtribes are treated herein in the following order: Paranepheleinae, Liabinae, and Munnoziinae.

PARANEPHELEINAE.—The subtribe contains two genera that share long style branches, pale anthers, elongate raphids in the achene wall, narrow disk corollas, and leaves mostly in basal rosettes. The inflorescence has few heads and in the type-genus the heads are sessile in the rosette of leaves. The two genera, *Paranephelius* (Figures

1, 2, 41–49) and *Pseudonosseris* (Figures 50–53), have pollen structure that supports their status as a related pair. Both have grains that appear caveate, with spines rather evenly distributed over the intercolpar regions. The illustrations of *Paranephelius* (as *Liabum ovatum*) by both Stix (1960, Abb. 11) and Skvarla et al. (1977, pl. 15: fig. F) are equivocal regarding complete separation of the outer exine from the footlayer, and their preparations seem to have a columellate layer of the exine tightly contracted against the footlayer. A point in the TEM of Skvarla et al. (1977, pl. 15: fig. F) seems to show many columellae closely appressed against the foot layer and at least one clear example of a basal attachment. However, closer examination of the most obvious basally attached element shows that it is not directly attached to the overlying tectum. Preparations in Hoyer's Solution, thick sections viewed with the light microscope, and SEMs of broken grains indicate that the columellate exine is normally less close to the foot-layer, and that a cavus-like area is present in the intercolpar parts of the grain. Studies of *Paranephelius* with oil immersion (Figures 1, 2) and SEM (Feuer and Dillon, 1982; Figures 45–48) show that the grains are not strictly caveate. They have a few narrow basal columellae under the spines that reach the foot layer. The SEM also shows occasional short pegs on the foot layer, but it is most likely that the basally attached structure seen in the TEM photo of Skvarla et al. (1977) is part of one of the slender columellae that has been bent and cut.

Broken pollen grains of *Pseudonosseris* have not been examined with the SEM, and oil immersion study does not show columellae of the type found in *Paranephelius*. If basal columellae are present in *Pseudonosseris*, they are more reduced than those of *Paranephelius*, which can be seen by light microscopy. The two genera, nevertheless, both show a tendency for great reduction in the basal columellae in pollen grains of comparatively large size.

In its vegetative or floral characters, *Pseudonosseris* seems less specialized than *Paranephelius*,

but the pollen seems more specialized. It is *Paranephelius* rather than *Pseudonosseris* that retains some irregularity of spine position and has more obvious remnants of basal columellae under the spines.

The presence of slender basal columellae under the spines of *Paranephelius* pollen conforms to the anthemoid pattern of typical Liabeae and eliminates doubts about the senecioid pollen patterns or Senecionean relationships of the tribe. Nevertheless, the extremely slender form of the basal columellae represents a trend toward cavus development that is interpreted herein as apomorphic within the tribe. The trend toward cavus development here and in some Munnoziinae indicates at least two separate instances of reduction in basal columellae in the Liabeae.

Similarities between the pollen of the Paranepheleinae and Munnoziinae might indicate close relationship between the two, but this is not supported by other evidence. In fact, on the basis of such characters as style form, anther color, endothelial cells, and raphids of the achene wall, the two subtribes are at opposite extremes in the tribe. The surviving slight irregularity of spine distribution along the margin of the colpus that is evident in *Paranephelius* (Figure 41) supports the idea that the regularly disposed spine pattern of the Paranepheleinae arose from members of the tribe with more irregularly disposed spines on the pollen within the immediate relationship, and separately from that of the Munnoziinae.

LIABINAE.—Members of the subtribe share pale anthers with fringed bases, narrow bases on the disk corolla throats, and leaves rarely or never in rosettes. The heads are often on short peduncles in crowded inflorescences. The style branches and the raphids in the achene wall may be long or short. The subtribe consists of ten genera, *Austroliabum* (Figures 3, 69–73), *Bishopanthus* (Figures 54–57), *Cacosmia* (Figures 4, 58–63), *Chionopappus* (Figures 5, 64–68), *Ferreyranthus* (Figures 6, 7, 78–82), *Liabellum* (Figures 11, 94–98), *Liabum* (Figures 12–20, 108–123), *Microliabum* (Figures 74–77), *Oligactis* (Figures 21–23, 99–107), and *Sinclairia* (Figures 8–10,

83–93), ranging north to central Mexico and the Greater Antilles and south to northern Argentina. In all these genera the spines are unevenly distributed in small subgroups on the pollen surface (Figures 60, 62–65, 67, 69, 70). As far as known, this type of arrangement is unique to the Liabeae but apparently plesiomorphic in the tribe. The pattern is reflected in cross-sections (Figure 68; Skvarla et al., 1977) by the irregular thickness of the intercolpar exine and by the confluence between the bases of the adjacent spines. Size of the pollen grains, in contrast, is highly variable in the subtribe (Appendix). Size of pollen grains seems to be reflected in the subtribe in the size of the columellae, smallest in *Liabum* and *Oligactis* (Figures 12–23), and largest in *Sinclairia* and *Liabellum* (Figures 8, 10, 11). The two closely related genera with the smallest pollen grains, *Liabum* and *Oligactis* (25–35 μm), are also distinctive in the shorter stouter tips of the spines. This is evident in both the Andean (Figures 99–107) and West Indian (Figures 108–111) material.

The SEMs of broken pollen in *Austroliabum*, *Ferreyranthus*, *Liabum*, and *Sinclairia*, and sectioned grains of *Chionopappus* (Marticorena and Parra, 1974), all indicate a distinct group of large basal columellae under the spines. Nevertheless, oil immersion studies by Marticorena (Figures 3, 7, 11) show variations toward a fused hollow cylinder in each of these genera. The fusion might be the result of poorer resolution or of the vertical direction of the observation in the oil immersion studies. Still, the pollen in one SEM preparation of *Microliabum* (Figure 77), which is closely related to *Austroliabum*, may be interpreted as an example of a fused hollow cylinder. There is no other SEM evidence of the trait in the subtribe.

The pollen form called the umbellatum-type by Stix (1960) has been examined in *Liabum* (Figures 12, 13, 18, 20, 118, 123) using SEM preparations. The pollen type differs from the more common form in the tribe by the basal columellae being somewhat smaller and more numerous, and extending into the areas between

the spines. Although named after *Liabum umbellatum* (L.) Schultz-Bipontinus of Jamaica, the character does not occur in that species. The character does occur in species in Hispaniola that have sometimes been included in a broader concept of *L. umbellatum*. Two species from Hispaniola have been examined. In *L. subacaule* Rydberg the columellae under the spines become narrower distally while those between the spines are often constricted at the base (Figure 118). There are also a few projections from the under surface of the internal tectum among the interspinal columellae. In *L. barahonense* Urban the supposed columellae between the spines are seen to be mostly projections from the under surface of the internal tectum and they are not connected to the foot-layer (Figures 122, 123). From the evidence, the umbellatum-type pollen in West Indian *Liabum* has columellae of basically different structure in the interspinal areas from those under the spines. This particular design of columellae is probably restricted to the genus *Liabum*. The umbellatum-type pollen was also credited to *Munnozia hastifolia* by Stix (1960, as *Liabum*), but the latter seems to be different in the details of its structure.

Most of the remaining genera of the subtribe have massive columellae clustered under the spines, but the survey of material under oil immersion by Marticorena has revealed a variant in *Sinclairia deamii* (B.L. Robinson and Bartlett) Rydberg having only small columellae (Figure 9). Examination with the SEM shows these columellae to be further distinguished by their common failure to reach the foot-layer (Figures 91, 92). The variant seems to represent an extreme reduction of a type that is rare in the subtribe Liabinae, though it does occur commonly in the Munnoziinae. As interpreted herein on the basis of the exposed unbroken basal columellar surface, the SEM photograph of *Microliabum* (Figure 77) represents another example in the subtribe of basal columellae that are incompletely fused to the foot-layer.

MUNNOZIINAE.—The subtribe contains four genera, *Erato*, *Philoglossa*, *Chrysactinium*, and

Munnozia that share short style branches, black anthers, quadrate raphids in the achene wall, somewhat expanded bases in the throats of the disk corollas, and a tendency for long-pedunculate heads. Nevertheless, for purposes of discussion of the pollen, the subtribe falls into two distinct subgroups consisting of two genera apiece. On the basis of pollen alone, the two subgroups would not be considered closely related.

Erato (Figures 24, 124–133) and *Philoglossa* (Figures 25, 26, 134–139) both have the irregularly clustered pattern of spines on the pollen surface (Figures 124–127, 134–136) that is characteristic of the larger subtribe Liabinae. Thick sections and whole grains examined with oil immersion, and broken grains viewed with the SEM, show that *Erato* further resembles the Liabinae by the large clustered basal columellae under each spine (Figures 24, 129, 131, 132, 133), all firmly attached to the foot layer. The presence of such pollen in *Erato* in the subtribe Munnoziinae strongly indicates that the form is plesiomorphic in the tribe.

In *Philoglossa* the pollen is externally the same as *Erato*; however, oil immersion and SEM studies show that the basal columellae under the spines are reduced in size and number. Such reduction is independent of the size of the grain that is the same size as in *Erato*. The oil immersion and SEM studies show that basal columellae are present (Figures 25, 26, 138, 139), a fact demonstrated also by Feuer and Dillon (1982). Still, the SEM preparations indicate that the columellae are weakly attached to the foot-layer and that a near-caveate condition exists (Figures 138, 139). The broken grains show a large expanse of papillose foot-layer with little evidence of columellar scars. *Philoglossa* is the only member of the tribe characteristically combining such reduction of the basal columellae with an irregular disposition of spines on the surface.

The remaining two genera of the subtribe, *Chrysactinium* (Figures 27, 28, 140–146) and *Munnozia* (Figures 29–40, 147–180) have spines regularly distributed on the surface of the pollen

with no merging of spine bases. Internally the columellae show a strong tendency for reduction, although a number of species (Figures 151–160) including the type of the genus, *M. lanceolata*, show the massive type seen in *Erato* and the Liabinae. Nevertheless, partial or complete columellae are clearly present in all members of the two genera that have been examined by light microscope or SEM. In this respect the pollen differs from that found in the Paranepheliinae. As seen in SEMs, however, there is a capacity in *Munnozia* for the most complete separation of the columellae from the foot-layer and thus the most technically complete cavus development in the tribe.

In the *Chrysactinium-Munnozia* complex, the detailed structure of the columellae and tecta shows great variation, and the variations seem to correlate well with taxonomic groups within a genus. As such, the variations are of more taxonomic value than variations in other parts of the tribe. In *Chrysactinium*, according to oil immersion studies (Figures 27, 28), the basal columellae vary from separate strands to a single hollow cylinder, but they are rather small and regularly arranged. An SEM view shows that the columellae connect with the foot-layer (Figures 144, 145). The examples seen in the SEM preparation are all fused, with the hollow center evident in one view (Figure 146). The form of the columellae in the genus is not precisely matched in size, symmetry, attachment to the foot-layer, or variable dissection in any member of *Munnozia*.

Munnozia itself has many different subgroups that can be distinguished by the internal structure of the pollen walls. The type-species, *Munnozia lanceolata* Ruiz and Pavon (Robinson and Brettell, 1974), and a series of close relatives, *M. cardenasii*, *M. foliosa*, *M. olearioides*, *M. peruensis*, and *M. rusbyi*, all having rather coriaceous leaves, appear to have a characteristic cluster of large, separate, basal columellae in a ring under each spine (Figures 29, 33, 151–155). No members of the group have the columellae completely fused into a hollow cylinder. In this typical group, the

columellae, as observed in thick section and SEM, are attached to the foot-layer. A singularly distinctive species, *M. perfoliata*, also has columellae grouped and unfused under the spines (Figure 156), but these columellae are less massive and are sometimes mixed with smaller columellae inside the circle. The even smaller circle of columellae in *M. lyrata*, as seen with oil immersion and SEM, seems to be unique to that distinctive species, with the enlarged proximal ends that do not reach the foot-layer (Figures 34, 161–165). The foot-layer characteristically bears a small peg under each spine below the hollow center.

The dissected pattern of columellae in *Munnozia lyrata* is in sharp contrast to the fused cylinder, which is mostly separated from the foot-layer, and seems to be characteristic of the subgenus *Kastnera* (Figures 39, 40, 172–180), *M. senecionidis* (Figure 35), and the latter's relatives, *M. affinis*, *M. angusta*, *M. convencionensis*, *M. corymbosa*, *M. glandulosa*, *M. longifolia*, *M. oxyphylla*, *M. pinnulosa*, *M. silphioides* (Figure 36), and *M. venosissima* (Figure 38). These fused columellae seem usually eccentric, and as seen by SEM, the eccentric form in *M. senecionidis* may be associated with partial eccentric attachment to the foot-layer (Figure 166, 167). It is evident, on the basis of pollen, that the *M. senecionidis* group is more closely related to the subgenus *Kastnera* (Figures 39, 40) than to typical *Munnozia* (Figures 29, 33).

According to Stix (1960), and as seen in this study in thick sections examined under the light microscope and in some broken grains under SEM, *Munnozia hastifolia* has columellae in the interspinal areas of the pollen wall. For this reason, the species was included in the umbellatum-type pollen by Stix (1960). Such a design seems anomalous in the group, because the two most closely related species, *M. maronii* and *M. subviridis*, have columellae of the *Kastnera*-*M. senecionidis*-type according to oil immersion studies (Figure 37).

One additional distinctive pollen type is found in *Munnozia jussieui*. As observed under oil im-

mersion by Marticorena (Figures 30–32) the columellae under the spines are of two forms, with numerous smaller ones surrounding a large central mass. The central mass seems to be solid, but on the basis of the outline of many samples, the central mass seems to consist of several large basal columellae that may be slightly separated. It seems unlikely that the species would be the only member of the tribe lacking a hollow or open space under the center of the spine. SEMs of broken grains (Figures 157–160) show that all the basal columellae are completely fused at the bases to the foot-layer.

In *Munnozia tenera* of the subgenus *Kastnera*, there is, as usual, an outer layer of short uniform columellae, but there also is a second inner layer of similar short uniform columellae between the spines and adjacent to the foot-layer (Figures 172–180). Close examination shows that the proximal ends of the short columellae in both series are narrow and not, or only weakly, attached to the structure below them. Thus, the inner layer is not, or only weakly, attached to the foot-layer, and more surprisingly the outer layer is not, or only weakly, attached to the "internal tectum" that caps the inner layer of short columellae. This differs from the structure of the "internal tectum" seen in other members of the tribe and described by Skvarla et al. (1977:156), which is attached to, or gives rise to, the outer layer of columellae. The inner layer of columellae is at a level equivalent to that occupied under the spines in most Liabeae by the larger basal columellae attached to the foot-layer. In *M. tenera*, it is notable that the cylindrical structure formed by the basal columellae under the spines is like the smaller columellae in not being attached to the foot-layer. The character may be more widely distributed in the subgenus *Kastnera*, but it is not found in *M. senecionidis*, which is the closest relative outside of the subgenus that has been examined under SEM in this study (Figures 166, 167).

Key to Types of Liabeae Pollen

1. Pollen with spines arranged in irregular groups on the surface, not evenly aligned along margin of colpus, with bases of spines variably confluent 2
 2. Exine nearly or truly caveate, with only slender basal columellae present under the spines *Philoglossa*
 2. Exine not caveate, with stout or numerous basal columellae present under the spines 3
 3. Pollen 25–35 μm in diameter; spines short with stout tips 4
 4. With small numerous basal columellae under both the spines and areas between the spines (umbellata-type of Stix, 1960) . . . *Liabum barahonense* and some other *Liabum* species from Hispaniola
 4. With large columellae restricted to area under the spines *Oligactis* and most *Liabum*;
 3. Pollen mostly 30–50 μm in diameter; spines with narrow tips 5
 5. Pollen less than 40 μm in diameter *Austroliabum*, *Cacosmia*, *Chionopappus*, *Erato*, *Ferreyranthus*, and *Microliabum*
 5. Pollen mostly 40–50 μm in diameter *Liabellum*, *Sinclairia*, and one *Ferreyranthus* species
1. Pollen with spines regularly arranged on surface of intercolpar area and mostly aligned along sides of colpus, each spine separated to equal depth on all sides 6
 6. Pollen 35–45 μm in diameter, with no or only very slender basal columellae under the spines 7
 7. Spines regularly aligned along sides of colpi; basal columellae not visible under the spines using light microscopy *Pseudonoseriis*
 7. Spines slightly unaligned along sides of the colpi; a few slender basal columellae present under the spines *Paranephelius*
 6. Pollen 27–45 μm in diameter, with basal columellae forming clusters, rings, or fused cylinders under the spines 8
 8. Basal columellae under the spines completely or almost completely separated from foot-layer at the base 9
 9. Pollen 40–42 μm in diameter; basal columellae in a circular unfused cluster under each spine *Munnozia lyrata*
 9. Pollen 27–37 μm in diameter; basal columellae under each spine usually fused into a single unit 10
 10. With two layers of short, dense columellae in interspinal areas of tectum *Munnozia* subgenus *Kastnera*
 10. With only one layer of short dense columellae in interspinal area of tectum *Munnozia senecionidis*
 8. Basal columellae under the spines attached at bases to foot-layer 11
 11. Basal columellae under each spine in small single symmetrical series about 2 μm in diameter *Chrysactinium*
 11. With at least some massive basal columellae under each spine, the clusters mostly 3–4 μm in diameter 12

12. Basal columellae under the spines of two types, many small peripheral columellae surrounding a central, massive, fused column *Munnozia jussieui*
12. A simple cluster of mostly large basal columellae under each spine 13
13. Pollen 28–30 μm in diameter; with basal columellae in both interspinal and spinal areas of tectum *Munnozia hastifolia*
13. Pollen 37–45 μm in diameter; with basal columellae only under the spines 14
14. Cluster under each spine with individual basal columellae often 2–3 μm in diameter typical *Munnozia*, *M. lanceolata* and its relatives
14. Cluster under each spine with individual columellae not more than 1.5 μm in diameter *Munnozia perfoliata*

Palynological Evidence on the Relationships of the Liabeae in the Asteraceae

The pollen structure in the Liabeae reinforces recent conclusions regarding the two conflicting placements of the group in the family by various authors. Cassini (1828), Robinson and Brettell (1973b), Nordenstam (1977), Jansen and Stuessy (1980), and Robinson (1983a) have placed the genera of the Liabeae in or near the Vernonieae. In contrast, Bentham and Hooker (1873) followed by Hoffmann (1894) and Cronquist (1955) have placed the broadly interpreted genus *Liabum* in the Senecioneae. The two tribes involved have the distinction of belonging to two different subfamilies of the Asteraceae as interpreted by Carlquist (1976) and Robinson (1977). The Vernonieae share most characters with the Arctoteae, Eremothamneae, Echinopsidae, Cynareae, Mutisieae, and Lactuceae in a group best recognized as the subfamily Cichorioideae, while the Senecioneae belong with the Eupatorieae, Heliantheae, Inuleae, Calenduleae, Astereae, and Anthemideae in a group best recognized as the Asteroideae. For comparisons of characters see Robinson and Brettell (1973b), Wagenitz (1976), Carlquist (1976), and Robinson (1977). As such the two tribes with which the Liabeae have been placed are not closely related, and there are many structural features by which the closest relationships of the tribe can be tested. Results of evidence from floral anatomy have most recently indicated that the Liabeae are close to the Vernonieae and other members of the Cichorioideae (Robinson and Brettell, 1973b; Nordenstam,

1977; Robinson, 1983a). Pollen evidence should reflect a similar relationship.

A general trend has been noticed by Robinson and Brettell (1973b) where all pollen surfaces that depart from an evenly distributed echinate pattern seem to belong to the subfamily Cichorioideae. These variations include some distinctive lophate and oblong psilate types, but also include most members of the Vernonieae having less obvious sublophate forms in which the spines are only arranged around depressed areoles rather than restricted to well-defined ridges.

The pollen in the Liabeae is echinate without obvious lophate or psilate variations, but the spines of most Liabeae are not evenly distributed on the surface of the grains. In all genera of the Liabeae except *Chrysactinium*, *Munnozia*, *Paranephelius*, and *Pseudonosseris*, the spines tend to be grouped in small series or crests with somewhat confluent bases. The gaps within the series are slightly but distinctly smaller than those between the series. The grouping of spines in these Liabeae is unlike the variations seen in any other tribe of the Asteraceae, but by its irregularity it would seem to be excluded from the subfamily Asteroideae, and would fall into the Cichorioideae.

Internal structure of the pollen wall shows more characters that can indicate relationship in the Asteraceae. Skvarla et al. (1966, 1977) have described features they termed a "cavus," "internal foramina," and "internal tecta," and on the basis of these structures they have recognized four basic pollen types in the family: helianthoid, senecioid, arctotoid, and anthemoid. Each of

these types shows some broad systematic correlations in the family and furnish a useful basis for comparison with the Liabeae.

The Liabeae do not have "internal foramina" in the pollen wall and therefore do not fall into the helianthoid classification of Skvarla et al. (1977) that is defined by the presence of internal foramina with a cavus. The character is almost restricted to the subfamily Asteroideae, occurring especially in such tribes as the Eupatorieae and Heliantheae, which have never been considered close relatives of the Liabeae. Internal foramina are notably undeveloped in a few of the most highly evolved members of the Asteroideae, such as most true Senecioneae, the Anthemideae, and most Ambrosiinae of the Heliantheae. The fact that there are no internal foramina in the Liabeae conforms with placement in the Cichorioideae but does not in itself preclude relation to some Senecioneae.

The Liabeae seem to lack a "cavus" in the pollen wall in their plesiomorphic form. The lack of the cavus provides a further basis for excluding the Liabeae from the helianthoid grouping of Skvarla et al. (1977). The cavus is also characteristic of two of the other major pollen wall patterns described by Skvarla et al. (1966, 1977), the senecoid, and arctotoid. A cavus extends through most members of the subfamily Asteroideae including the Senecioneae and is the best character after that of spine distribution for excluding the Liabeae from the Senecioneae and the Asteroideae. The "lack" of a cavus is, in fact, the same as the "presence" of basal columellae connecting the outer exine to the foot layer in the intercolpar area, and this is the principal characteristic of the fourth or anthemoid pollen wall pattern of Skvarla et al. (1977).

The distribution of the non-caveate or anthemoid pollen of the type found in the Liabeae is of considerable interest, especially since it is the type found in most members of the subfamily Cichorioideae excluding the Arctoteae. Of the various pollen types, it is the one that most nearly aligns with the presently accepted subfamily classification of the Asteraceae. There are important exceptions in the distribution of the anthemoid pollen type, however, including its presence in the Anthemideae of the Asteroideae and its ab-

sence in various Cichorioideae such as the Arctoteae.

In one way, it is unfortunate that the non-caveate pollen type has been called anthemoid by Skvarla et al. (1977), because the type is much more characteristic of members of the subfamily Cichorioideae. The Anthemideae is the one major group in the Asteroideae in which the anthemoid pattern occurs. It should be emphasized further that the Anthemideae is not primitive within the subfamily Asteroideae and is not close to the Cichorioideae (Robinson, 1981). Caveate pollen, the type predominant in the Asteroideae, is found even in what seems to be a primitive element of the Anthemideae, in *Ursinia* (Robinson and Brettell, 1973b; Skvarla et al., 1977). One could conclude from foregoing evidence that the non-caveate pollen of the Anthemideae represents a development of basal columellae in the intercolpar area from ancestral caveate types that did not have such columellae. The anthemoid pollen pattern thus would have at least two separate origins in the Asteraceae.

In the subfamily Cichorioideae, where the anthemoid pollen pattern predominates, there are some caveate forms such as those within the arctotoid pattern, some Lactuceae having an interrupted cavus, and a few Mutisieae such as *Dasyphyllum* (which is caveate along the colpar margins). Bolick (1978) cites caveate pollen in *Ethulia*, *Hoplophyllum*, and *Corymbium* of the Veronieae and *Centaurea* in the Cynareae, and indicates that the Arctoteae is approximately equally divided between caveate and non-caveate types. To these examples may be added those now known from the Liabeae. In these cases, the caveate pollen seems to be derived from non-caveate ancestors, and it has evidently been derived more than once. Apparently, the two subfamilies of the Asteraceae have the two different types of pollen as basic, but each type, caveate and non-caveate, seems able to give rise to the other. The fact that the anthemoid pollen wall type occurs in the one specialized tribe of the Asteroideae, in the absence of any other supporting characters, does not particularly favor the idea of asterioid relationships for the Liabeae.

In addition to the cavus, the presence of an

“internal tectum” is used as a basis for differentiating the arctotoid pollen pattern within the subfamily Cichorioideae (Skvarla et al., 1977). This involves the most characteristic form of internal tecta that almost equally divides the region of solid columellae. The arctotoid pollen is also claimed in *Eremothamnus* (Liens, 1970) of the tribe Eremothamneae (Robinson and Brettell, 1973c), but this should be checked. Illustrations of Skvarla et al. (1977, pl. 24: fig. F, H) suggest an arctotoid pattern in some Lactuceae such as *Rafinesquia* and *Lapsana*. Internal tecta of this type occur in pollen of other Cichorioideae, seeming to be most highly developed in the tribes Cynareae and Mutiseae. The latter two tribes show relationship to the Arctoteae in the form of the style, but they differ and are excluded from the arctotoid type by Skvarla et al. (1977) because of the lack of a “cavus.” The Liabeae and Vernonieae lack the elaborate internal tecta of the arctotoid type or the Cynareae and Mutiseae type, but enlargements at the proximal ends of the short outer columellae form a layer at the lower limit of the outer columellae that is also referred to as an internal tectum by Skvarla et al. (1977:156). The latter layer is often prominent in the areas between the spines where there may be no basal columellae, and the structure thus appears very different from the structure referred to by the same name in the Arctoteae and is structurally equivalent to the layer below the internal tectum of the Arctoteae. Nevertheless, the two structures are formed in the same manner and no other better term seems to have been provided as yet.

Within the anthemoid pollen pattern Skvarla et al. (1977) have described a modified pattern they termed “Liaboid.” It is distinguished by the basal columellae being much broader (Figures 68, 89, 90, 113, 114, 120) than those noted for the typical anthemoid pollen pattern. The pattern is cited from “*Liabum*,” *Cacosmia*, and the Vernonieae and is cited elsewhere by Skvarla et al. only in *Scolymus* of the Cichorioid Lactuceae on the basis of TEM studies by Tomb (1975). Observation during the present study show that *Gundelia*, of the prospective Cichorioid tribe

Gundelieae, has similar massive columellar structure under the spines, but these do not reach the foot-layer. The limitation of the liaboid pollen pattern to members of the subfamily Cichorioideae seems to provide confirmation of the placement of the Liabeae in that subfamily. The distribution of the liaboid pattern within the subfamily seems to parallel evidence of stylar form in suggesting closest relationship of the Liabeae to the Vernonieae and Lactuceae, especially the former.

Of the tribes that appear to be most closely related to the Liabeae, the pollen of the Lactuceae can be distinguished by various characters such as lophate surfaces or more complex internal tecta. In the cases where Tomb (1975) and Skvarla et al. (1977) show internal structure more like that of the Vernonieae and Liabeae the structure is under the ridges of specialized echinolophate grains. Among the non-lophate members of the Lactuceae, there seem to be cavus-like areas periodically interrupted by columellae reaching the foot layer, a form seen in comparatively few derived members of the Liabeae.

The Vernonieae is regarded here as the probable closest relatives of the Liabeae, and the two tribes have been combined by some recent authors (Nash, 1976; Turner and Powell, 1977; Jansen and Stuessy, 1980). The two groups were placed adjacent to each other in the pollen study by Stix (1960) because of their similar wall structure. It is of interest, therefore, that the pollen of the Vernonieae and Liabeae is in fact distinguishable, and almost without exception the tribes show totally different trends in the details of their anthemoid structure.

Surface features alone could be used to distinguish most Vernonieae from the Liabeae. Only the recently described *Pseudostiffitia* (Robinson, 1979) in the Vernonieae appears to have no trace of a lophate surface pattern (Figures 181, 182). The remainder of the Vernonieae have various degrees of areole formation (Keeley and Jones, 1979). Most members of the tribe have a form termed the Lychnophora-type by Stix (1960), where the tectum is continuous between the

colpi, but where slight areolae are present (Figures 190–192). The polygonal areolae are more obvious under the light microscope where the columellae are visible to accentuate the pattern. The ridges in some genera, such as *Bishopalea*, are more obvious with the tectum still continuous across the areolae (Figures 200–202). More strongly lophate pollen forms in the tribe, such as *Heterocypselia*, have regularly arranged ridges with a restricted tectum (Figures 203, 204). The extreme form of lophate grain in the tribe has little or no tectum and has the columellae visible from a lateral view of the ridges. This is seen in *Elephantopus* and its relatives, as well as in some Paleotropical elements of the subtribe Vernoniinae, such as *Cyanthillium* and *Phyllocephalum* (Figures 205–208; Skvarla et al., 1977; Keeley and Jones, 1979; Jones, 1981; Kirkman, 1981). The trend toward a lophate pollen surface seems basic to the Vernoniaceae, but is absent from the Liabeae.

Size of pollen grains alone offers some distinction between the tribes. Pollen of the Liabeae is mostly 25–40 μm in diameter with some up to 50 μm . The pollen of the Vernoniaceae is usually 40 μm in diameter or more, and it is often over 50 μm .

Based on a limited sample, Skvarla et al. (1977) indicated some differences in the detailed internal structure of the liaboid pattern in the Vernoniaceae and Liabeae. On page 156 they stated the following.

In *Liabum* the lateral branches of the distal ends of the columellae (sic basal columellae) form a uniform internal tectum. From this internal tectum a short, uniform set of columellae arise which in turn are capped by a perforate tectum. Commonly, the tectum areas between the large columellae show gentle undulations. In the Vernoniaceae the major distinction from *Liabum* is that the lateral branches are frequently (but not always) a thick network of solid rods or tubules with complex anastomosing patterns.

The distinction is evident to some degree in the examples of broken pollen grains seen in the present study. Many Vernoniaceae, including *Blan-*

chetia (Figures 197–199) and *Pseudostiffitia* (Figures 184–189), show a branching pattern that completely fills the inter-spinal areas, while *Vernonia fuertesii* shows that even an unsupported internal tectum in the tribe does not bear a layer of regular short columellae as in the Liabeae (Figures 193–195).

The most important difference in the internal structure of the pollen wall was first noted by Stix (1960) and has been confirmed in the present study by the light microscope and SEM views of broken grains. In the Vernoniaceae with well-developed spines, each spine seems to have a single solid basal columella centered under the spine, which is continuous with the apex of the spine (Figures 193–195, 197–199). The only exception seems to be *Pseudostiffitia* with basal columellae distributed more randomly throughout the spinal and interspinal areas with branches of more than one basal columella contributing to each spine (Figures 184–189). Though unlike any other Vernoniaceae, *Pseudostiffitia* is not like any Liabeae. In the Liabeae, the basal columellae are either grouped under the spines (Figures 12–16, 29, 46, 89, 163–165) or are coalesced into a single hollow cylinder (Figures 40, 145, 146, 166, 167, 174–176). The coalesced form, which seems continuous with the apex of the spine, resembles the single columella of the Vernoniaceae except for the hollow center. Single solid columellae centered under the spines do not seem to occur in the Liabeae except possibly in a specialized form seen in *Munnozia jussieui*. In the latter case the oil immersion studies (Figures 30–32) suggest a characteristically higher degree of coalescence than any other member of the tribe, but the SEM seems to show narrow separation (Figures 157–160) that was overlooked at the lower magnification. The difference between the basal columellae in the two tribes is regarded herein as fundamental, and observation of the range of variation in the Liabeae indicates that the cluster of separate columellae is plesiomorphic in the tribe. The form most resembling the Vernoniaceae is apparently an isolated derivative.

Appendix

List of specimens examined palynologically in the study with figures in which they appear and with measurements (in μm) of pollen in glycerine mounts and Hoyer's (H) mounts.

LIABEAE

Austroliabum

- A. candidum* (Grisebach) H. Robinson & Brettell
O. Kuntze s/n, Argentina, Figures 69–72
- A. eremophyllum* (Cabrera) H. Robinson & Brettell
Venturi 6580, Argentina H 38–40
- A. polymnioides* (R.E. Fries) H. Robinson & Brettell
Pflanz 4102, Bolivia, Figure 3 H 33–37
Venturi 5280, Argentina 35–37
Wall & Sparre 622, Argentina, Figure 73 33–37

Bishopanthus

- B. soliceps* H. Robinson
King 9280, Peru, Figures 54–57 30(–35), H 35

Cacosmia

- C. rugosa* Humboldt, Bonpland, & Kunth
Barclay & Juajibioy 8305, Ecuador
Barclay & Juajibioy 8339, Ecuador H 27–30
Wurdack 1016, Peru, Figures 4, 58–61 H 27

Chionopappus

- C. benthamii* (Bentham) Blake
Asplund 10996, Peru, Figures 5, 64–67
Ferreyra 7663, Peru H 40
Ferreyra 11078, Peru
Macbride & Featherstone 162, Peru H 35–37
Pennell 14480, Peru

Chrysactinium

- C. acaule* (Humboldt, Bonpland, & Kunth) Weddell
Camp E-2231, Ecuador, Figures 27, 144–146 30
Haught 3261, Ecuador, Figures 140–143
- C. amphothrix* (Blake) H. Robinson & Brettell
Ferreyra 9481, Peru
- C. caulescens* (Hieronymus) H. Robinson & Brettell
Jameson s/n, Ecuador, type of *Liabum bicolor* Blake H 40
Wurdack 764, Peru
- C. hieracioides* (Humboldt, Bonpland, & Kunth) H. Robinson & Brettell
Wurdack 1113, Peru, Figure 28 30–32
- C. longiradiatum* (Hieronymus) H. Robinson & Brettell
Fagerlind & Wibon 1563, Ecuador 30–34
Haught 3261, Ecuador H 35–37
Holmgren 560, Ecuador

Erato

- E. polymnioides* DeCandolle
Ferreyra 8168, Peru H 35–37

King 6551, Ecuador, Figures 124–130	
Lugo 241, Ecuador, Figure 24	35, 36
<i>E. Sodiroi</i> (Hieronymus) H. Robinson	
Barclay & Juajibioy 8314, Ecuador, Figures 131–134	35–40, H 35–37
Rose & Rose 22413, Ecuador	
<i>E. stenolepis</i> (Blake) H. Robinson	
Hutchison 1190, Peru	
<i>E. vulcanica</i> (Klatt) H. Robinson	
Cuatrecasas 256, Colombia	
Steyermark 55981, Venezuela, type <i>Liabum insigne</i> Badillo	
v. Sneidern A.504, Colombia	36–38
<i>Ferreyranthus</i>	
<i>F. excelsus</i> (Poeppig & Endlicher) H. Robinson & Brettell	
Hutchison & Wright 3854, Peru, Figure 6	32–34
<i>F. rugosus</i> (Ferreyra) H. Robinson & Brettell	
Wurdack 469, Peru, type, Figures 82, 83	29–35, H 35–37
<i>F. vaginans</i> (Muschler) H. Robinson & Brettell	
Vargas 11050, Peru	H 35
<i>F. verbascifolius</i> (Humboldt, Bonpland, & Kunth) H. Robinson & Brettell	
Camp E-3906, Ecuador	30–34
Hutchison & Wright 5133, Peru, Figures 78–81	
Lehmann 7958, Ecuador, type of <i>Liabum salviifolium</i> Hieronymus	
<i>F. vernonioides</i> (Muschler) H. Robinson & Brettell	
Hutchison & Wright 5176, Peru, Figure 7	39–41
Kunkel 975, Peru	H 43
<i>Liabellum</i>	
<i>L. angustissimum</i> (A. Gray) Rydberg	
Pringle 2501, Mexico	
Rose 3406, Mexico	H 50
<i>L. cervinum</i> (B.L. Robinson) Rydberg	
Pringle 4398, Mexico	50–52
<i>L. palmeri</i> (A. Gray) Rydberg	
Barnes & Land s/n, Mexico, Figures 94–98	
Pringle 2328, Mexico	47–50
<i>Liabum</i>	
<i>L. acuminatum</i> Rusby	
Williams 1605, Bolivia	
Woytkowski 34392, Peru	28–31
<i>L. amplexicaule</i> Poeppig & Endlicher	
Klug 3183, Peru	30–34
<i>L. barahonense</i> Urban	
Howard 12087, Dominican Republic, Figures 12, 121–123	
Jimenez 3284, Dominican Republic, Figures 13, 108–111	
<i>L. barclayae</i> H. Robinson	
Barclay & Juajibioy 8316, Ecuador, type	
<i>L. bourgeau</i> Hieronymus	
Skutch 4052, Costa Rica, Figure 14	34, 35
Skutch 4730, Costa Rica	H 34–36
Standley & Valerio 51861, Costa Rica	
<i>L. crispum</i> Schultz-Bipontinus	
Ekman 15643, Cuba	34, 35
<i>L. cubense</i> Schultz-Bipontinus	
Ekman 1542, Cuba	27–32
<i>L. domingense</i> Rydberg	

Valeur 994, Dominican Republic	
<i>L. eggersii</i> Hieronymus	
Camp E-3196, Ecuador	27–30
Fagerlind & Wibon 290, Ecuador, Figure 15	
Haught 3446, Peru	H 30–32
<i>L. falcatum</i> Rusby	
Smith 2012, Colombia, type, Figure 16	H 27
<i>L. ferreyrii</i> H. Robinson	
Hutchison, Wright & Straw 5948, Peru	
<i>L. floribundum</i> Lessing	
Camp E-3196, Ecuador	24–46
Hutchison & v. Bismark 6337, Peru	
<i>L. grandiflorum</i> (Humboldt, Bonpland, & Kunth) Lessing	
Camp E-3123, Ecuador	
Rose, Pachano & Rose 23232, Ecuador, type of <i>L. amplexans</i> Blake	
<i>L. igniarium</i> (Humboldt, Bonpland, & Kunth) Lessing	
Heilborn 534, Ecuador, Figures 112–117	32–35
Lehmann 4896, Ecuador, type of <i>L. lehmannii</i> Hieronymus	
<i>L. kingii</i> H. Robinson	
Sydow 484, Ecuador	27–30
<i>L. melastomoides</i> (Humboldt, Bonpland, & Kunth) Lessing	
Dryander 39172, Colombia	H 30–32
Humbert et al. 25795, Colombia	25–27
<i>L. nigro-pilosum</i> Hieronymus	
Mexia 6686, Ecuador	
<i>L. nudicaule</i> H. Robinson	
Hutchison 1191, Peru	
<i>L. oblanceolatum</i> Urban & Ekman	
Loigier 15402, Dominican Republic	
<i>L. ovatifolium</i> Urban	
Ekman H-12578, Dominican Republic, type	33–35
<i>L. polycephalum</i> Urban	
Ekman H-5346, Haiti	33–35
<i>L. poiteaui</i> (Cassini) Urban	
Ekman H-3713, Haiti, Figure 17	30–33
<i>L. sandemanii</i> H. Robinson	
Sandeman 4420, Peru, type	H 35
<i>L. selleanum</i> Urban	
Ekman H-1548, Haiti, type, Figure 18	32–35
<i>L. solidagineum</i> (Humboldt, Bonpland, & Kunth) Lessing	
Humbert 31002, Peru	H 25–27
Hutchison 1129, Peru	32, 33
Macbride & Featherstone 1519, Peru	32–35
<i>L. subacaule</i> Rydberg	
Ekman H-1870, Haiti, Figure 19	30–32
Valeur 56, Dominican Republic, Figures 20, 118–120	30–32
<i>L. umbellatum</i> (L.) Schultz-Bipontinus	
Maxon 277, Jamaica	
Maxon 8575, Jamaica	32–35
<i>L. vargasii</i> H. Robinson	
Vargas 10182, Peru, type	
<i>L. wrightii</i> Grisebach	
Ekman 5061, Cuba	31–34
Ekman 14745, Cuba	
<i>L. wurdackii</i> Ferreyra	

Hutchison & Wright 5850, Peru	31, 32
<i>Microliabum</i>	
<i>M. humile</i> (Cabrera) Cabrera	
Okada 5953, Argentina, Figures 74–77	H 35
<i>Munnozia</i> subgenus <i>Munnozia</i>	
<i>M. affinis</i> (Blake) H. Robinson & Brettell	
Macbride 4337, Peru, type	H 37–40
<i>M. angusta</i> (Blake) H. Robinson & Brettell	
Mexia 8152, Peru	33–35, H 35
<i>M. canarensis</i> (Cuatrecasas) H. Robinson & Brettell	
Camp E-2836, Ecuador, type	
<i>M. cardenasii</i> (Cabrera) H. Robinson & Brettell	
Herzog 2149, Bolivia	42–45
<i>M. convencioneensis</i> (Cuatrecasas) H. Robinson & Brettell	
Vargas 4446, Peru, type	H 37
<i>M. corymbosa</i> Ruiz & Pavon	
ex herb Pavon, possible type	
<i>M. foliosa</i> Rusby	
Bang 1195, Bolivia, type	
Bang 1581, Bolivia, type of <i>M. chrysanthemoides</i> Rusby, Figure 29	H 42–45
Vargas 2761, Peru, type of <i>Liabum herrerae</i> Cabrera	
Metcalf 30754, Peru	H 43–45
<i>M. gigantea</i> (Rusby) Rusby	
Bang 2379, Bolivia, type	
<i>M. glandulosa</i> (O. Kuntze) Rusby	
Cárdenas 683, Bolivia	
<i>M. hastifolia</i> (Poeppig & Endlicher) H. Robinson & Brettell	
Uribe 3149, Colombia	
Hutchison 1191, Peru	28–30
<i>M. jussieui</i> (Cassini) H. Robinson & Brettell	
Lehmann 8450, Colombia, type of <i>Liabum nonoense</i> var. <i>microcephalum</i>	
Hieronimus, Figure 32	
Triana 1145, Colombia, Figures 30, 157–160	
v. Sneidern 1974, Colombia, Figure 31	35
<i>M. lanceolata</i> Ruiz & Pavon	
Humbert 30952, Peru, Figure 33	37
Hutchison, Wright & Straw 5928, Peru, Figures 147–155	
<i>M. longifolia</i> Rusby	
Buchtien 3079, Bolivia, type	
<i>M. lyrata</i> (A. Gray) H. Robinson & Brettell	
Ferreyra 6968, Peru, Figures 34, 161–165	H 40–42
<i>M. maronii</i> (Andre) H. Robinson	
Mandon 240, Bolivia	30–35
<i>M. olearioides</i> (Muschler) H. Robinson & Brettell	
Weberbauer 4417, Peru, type frag.	H 40–44
<i>M. oxyphylla</i> (Cuatrecasas) H. Robinson & Brettell	
Woytkowski 34165, Peru, type	
<i>M. perfoliata</i> (Blake) H. Robinson & Brettell	
King & Guevara 6184, Colombia, Figure 156	H 38–40
<i>M. peruensis</i> (Cuatrecasas) H. Robinson & Brettell	
Woytkowski 34275, Peru, type	H 45
<i>M. pinnulosa</i> (O. Kuntze) H. Robinson & Brettell	
Holway 616, Bolivia	
<i>M. rusbyi</i> (Britton) Rusby	
Cárdenas 6278, Bolivia	

- M. senecionidis* Benth
 García-Barriga 12518, Colombia
 Cárdenas 3277, Bolivia
 Haught 3295, Ecuador, Figure 35
 King & Almeda 7842, Ecuador, Figures 166, 167
 Pennell 769, Colombia, type of *M. attenuata* Rusby
 Schneider 7, Colombia 27–30
 v. Sneidern 2778, Colombia 30–32
- M. silphioides* (Poeppig & Endlicher) H. Robinson & Brettell
 Swingle 183, Peru, Figure 36
- M. subviride* (Blake) H. Robinson & Brettell
 Cook & Gilbert 1365, Peru, type, Figure 37
- M. venosissima* Ruiz & Pavon
 Macbride 4312, Peru, type of *Liabum pulchrum* Blake, Figure 38
- Munnozia* subgenus *Kastnera*
- M. acostae* Chung
 Asplund 9586, Ecuador H 34–37
- M. annua* (Muschler) H. Robinson & Brettell
 Hutchison & Wright 5084, Peru, Figures 39, 168–171
- M. liaboides* (Lessing) H. Robinson
 Ferreyra 6968, Peru
 Haught 3294, Ecuador H 35–37
- M. nivea* (Hieronymus) H. Robinson & Brettell
 Killip & Varela 34590, Colombia, Figure 40
 Weberbauer 6022 H 33–35
- M. tenera* (Schultz-Bipontinus) H. Robinson & Brettell
 Barclay & Juajibioy 5760 H 35–37
 Killip 9775, Colombia, Figures 172–180
- Oligactis* subgenus *Oligactis*
- O. latifolia* (Hieronymus) H. Robinson & Brettell
 v. Sneidern 354, Colombia 27–30
- O. sessiliflora* (Humboldt, Bonpland, & Kunth) H. Robinson & Brettell
 Allart 370, Venezuela, type of *Liabum tovarense* Badillo
 Ariste-Joseph A-257, Colombia 25–27
- O. volubilis* (Humboldt, Bonpland, & Kunth) Cassini
 Cuatrecasas 12855, Colombia, Figures 99–103
 Gehringer 427, Venezuela, type of *Liabum meridense* Badillo
 Pérez-Arbelaes & Cuatrecasas 8164, Colombia, type of *Liabum boyacense*
 Cuatrecasas
 Smith 2013, Colombia, type of *Liabum biattenuatum* Rusby, Figure 21
- Oligactis* subgenus *Andromachiopsis*
- O. coriacea* (Hieronymus) H. Robinson & Brettell
 Camp E-4190, Ecuador, Figure 22 33–37
 Mexia 7476, Ecuador
- O. ecuadoriensis* (Hieronymus) H. Robinson & Brettell
 Lehmann 4897, Ecuador, type
- O. ochracea* (Cuatrecasas) H. Robinson & Brettell
 Townsend A-193, Peru H 33–35
- O. pastoensis* (Cuatrecasas) H. Robinson & Brettell
 Cuatrecasas 11949, Colombia, type H 33–35
- O. pichinchensis* (Hieronymus) H. Robinson & Brettell
 Mexia 7697, Ecuador, Figures 104–107 30–32, H 35
 Sydow 605, Ecuador, Figure 23 27–30

Paranephelius

- P. asperifolius* (Muschler) H. Robinson & Brettell
Fiebrig 3538, Bolivia, type 38–40
- P. bullatus* A. Gray ex Weddell
Macbride & Featherstone 1656, Peru
Macbride & Featherstone 2131, Peru
- P. jelskii* (Hieronymus) H. Robinson & Brettell
Wurdack 760, Peru, Figure 1 35–37
Wurdack 1240, Peru, Figure 48
- P. ovatus* Weddell
Pennell 13363, Peru 47–50
- P. uniflorus* Poeppig & Endlicher
Cerrate 1367, Peru, Figures 45–47 36–40
Ferreyra 5580, Peru, Figures 41–44
Herzog 1840, Bolivia, Figure 2 42–45

Philoglossa

- P. mimuloides* (Hieronymus) H. Robinson & Cuatrecasas
Dodson & Thien 1467, Ecuador H 35
Firmin 52, Ecuador
King 6633, Ecuador
- P. mimuloides* forma *sapida* (Bristol) H. Robinson & Cuatrecasas
Bristol 348, Colombia, type, Figure 25
- P. peruviana* DeCandolle
Asplund 13735, Peru, Figures 138, 139 H 35–37
Ferreyra 4022, Peru, Figures 26, 134–137
- P. pterocarpa* Sandwith
Soukup 4219, Peru H 30

Pseudonosotis

- P. discolor* (Muschler) H. Robinson & Brettell
Metcalf 30531, Peru, Figures 50–53 H 37–40
- P. striata* (Cuatrecasas) H. Robinson & Brettell
Weberbauer 7107, Peru, type H 38–40

Sinclairia

- S. andrieuxii* (DeCandolle) H. Robinson & Brettell
Cronquist & Sousa 10457, Mexico H 50–52
- S. andromachioides* (Lessing) Rydberg
Pringle 5905, Mexico H 37–42
Purpus 2942, Mexico 35
- S. brachypus* Rydberg
Pittier 1886, Guatemala, type
- S. caducifolia* (B.L. Robinson & Bartlett) Rydberg
King & Soderstrom 4988, Mexico
Palmer 245, Mexico
- S. deamii* (B.L. Robinson & Bartlett) Rydberg
Edwards 568, Honduras, Figures 9, 91–93 H 37–42
Standley 19695, El Salvador, Figures 10, 88–90
- S. deppeana* (Lessing) Rydberg
Botteri 1177, Mexico 37, H 42–45
- S. dimidia* (Blake) H. Robinson & Brettell
Bartlett 12602, Guatemala, type
- S. discolor* Hooker & Arnott
Molina et al. 17514, Costa Rica 37
Ton 780, Mexico, Figures 84–87

- Williams & Molina 13728, Honduras
S. glabra (Hemsley) Rydberg
 Hartman 120, El Salvador 35–37
 Mexia 8797, Mexico 42–45
S. hypochlora (Blake) Rydberg
 Skutch 2031, Guatemala
S. klattii (B.L. Robinson & Greenman) H. Robinson & Brettell
 Conzatti 1751, Mexico, Figure 8
 Pringle 6059, Mexico 48–50
S. moorei (H. Robinson & Brettell) H. Robinson & Brettell
 Moore 5518, Mexico, type H 53–55
S. pittieri Rydberg
 Pittier 9093, Costa Rica, type
S. platylepis (Schultz-Bipontinus ex Klatt) Rydberg
 Schipp S-738, Belize 33–37
S. polyantha (Klatt) Rydberg
 Allen 2886, Panama
 Skutch 3488, Costa Rica 38–40
 Standley 42513, Costa Rica H 37–40
S. pringlei (B.L. Robinson & Bartlett) H. Robinson & Brettell
 Pringle 6214, Mexico 42, H 50–52
S. sericolepis (Hemsley) Rydberg
 Bourgeau 2177, Mexico, type
S. vagans (Blake) H. Robinson & Brettell
 Skutch 1913, Guatemala, type

VERNONIEAE

Bishopalea

- B. erecta* H. Robinson
 King & Bishop 8729, Brazil, Figures 200–202

Blanchetia

- B. heterotricha* DeCandolle
 Schery 736a, Brazil, Figures 196–199

Heterocypsela

- H. andersonii* H. Robinson
 Anderson et al. 9223, Brazil, type, Figures 203, 204

Phyllocephalum

- P. scabridum* (DeCandolle) Kirkman
 Stocks 127, India, Figures 205–208

Pseudostiffia

- P. kingii* H. Robinson
 King et al. 8145, Brazil, Figures 181–189

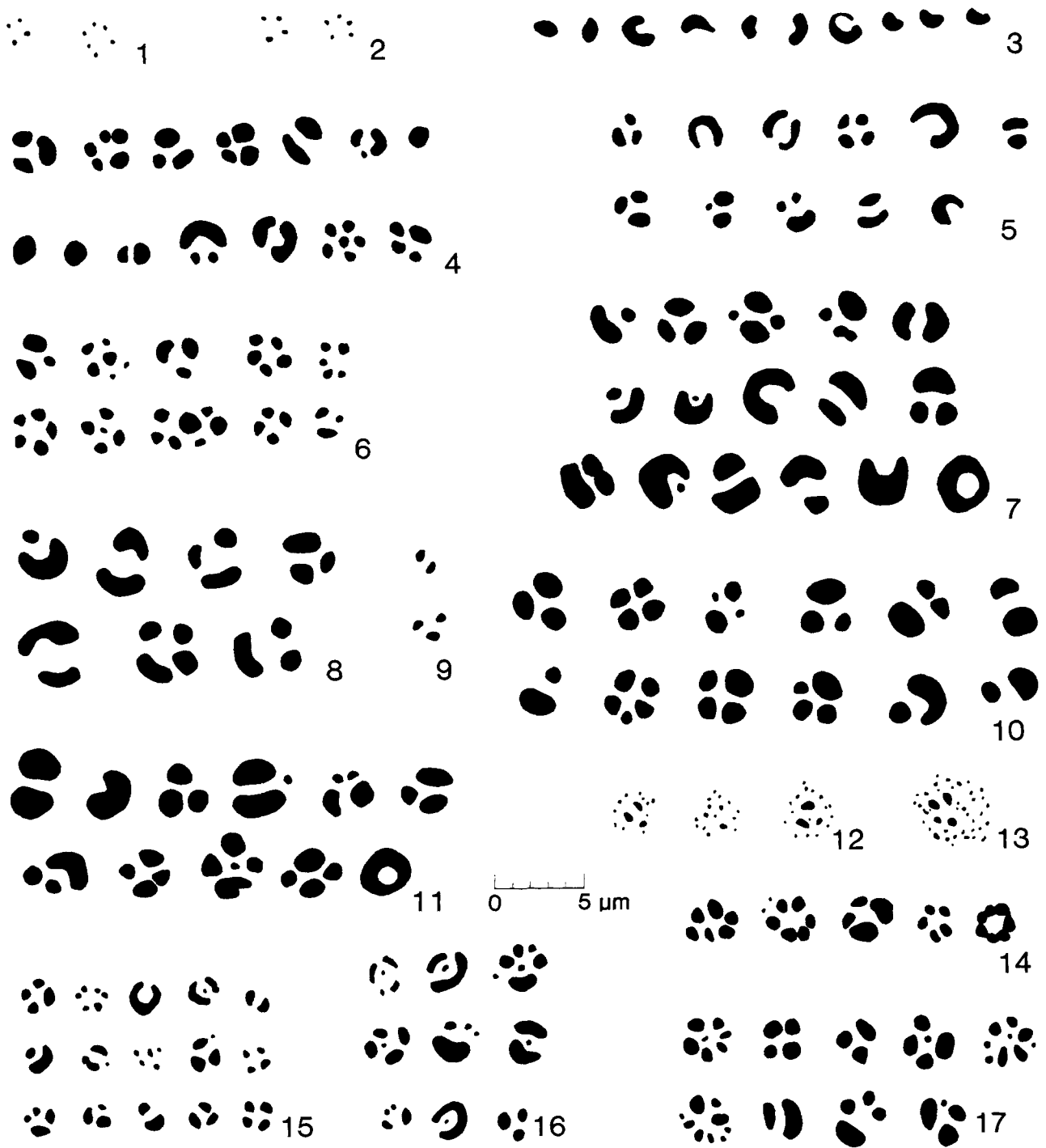
Vernonia

- V. fuertesii* (Urban) H. Robinson
 Ekman H-7351, Haiti, type of *Vernonia barkeri* Ekman ex Urban, Figures
 190–195

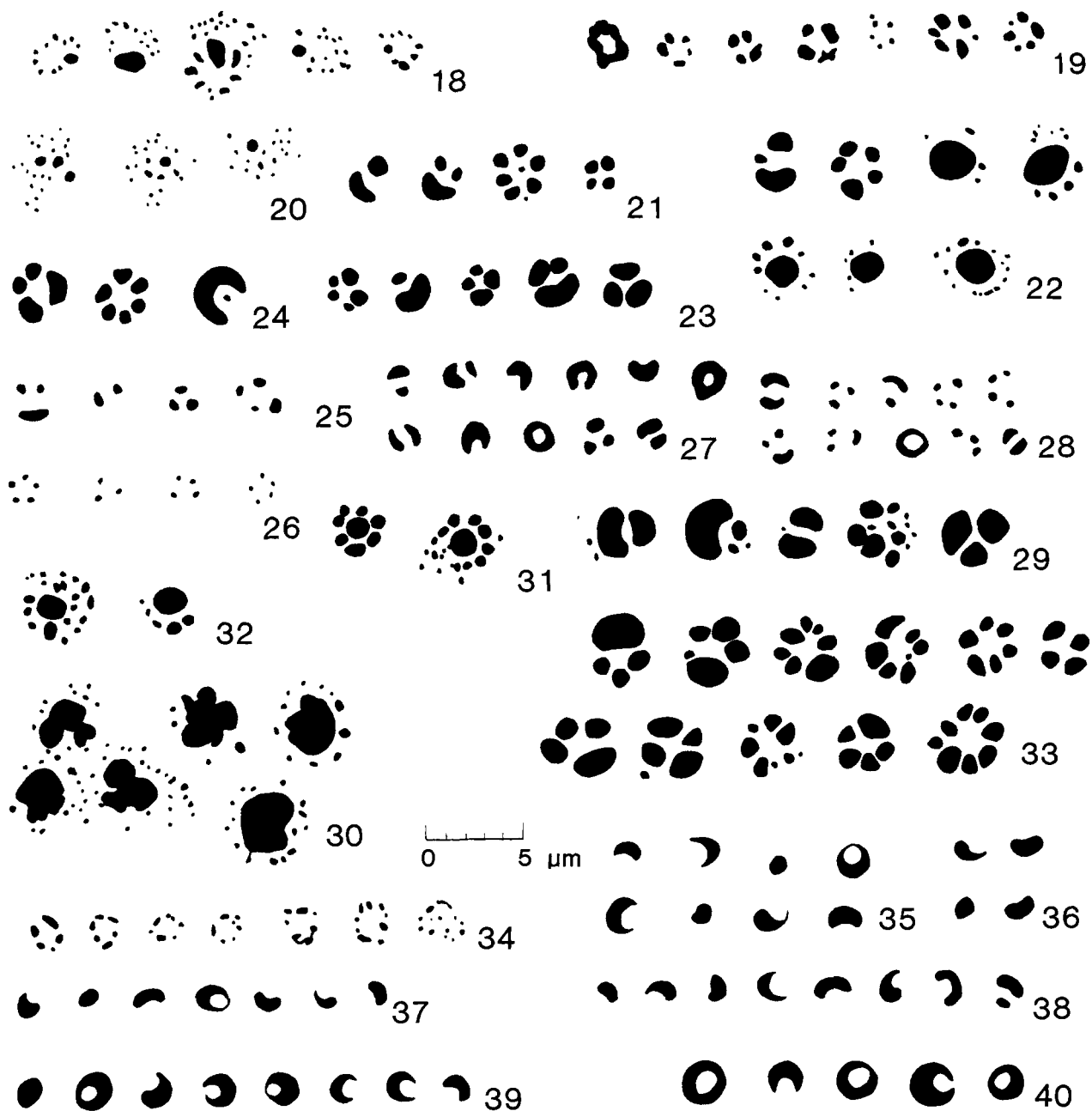
Literature Cited

- Bentham, G., and J.D. Hooker
1873. Ordo 88: Compositae. In *Genera Plantarum*, 2(1):163–533, 536, 537.
- Blake, S.F.
1935. The Genus *Chionopappus* of Bentham (Asteraceae). *Journal of the Washington Academy of Sciences*, 25(11):488–493.
- Bolick, M.R.
1978. Taxonomic, Evolutionary, and Functional Considerations of *Compositae* Pollen Ultrastructure and Sculpture. *Plant Systematics and Evolution*, 130:209–218.
- Cabrera, A.L.
1954. Compuestas sudamericanas nuevas o críticas, II. *Notas del Museo, Universidad Nacional de Eva Peron*, 17(84):71–80.
- Carlquist, S.
1976. Tribal Interrelationships and Phylogeny of the Asteraceae. *Aliso*, 8(4):465–492.
- Cassini, H.
1828. Vernoniées. In G. Cuvier, editor, *Dictionnaire des Sciences Naturelles*, 57:338–347. Paris [Reprinted 1975 in R.M. King and H.W. Dawson, editors, *Cassini on Compositae*, 3:1801–1811. New York: Oriole Editions.]
- Cronquist, A.
1955. Phylogeny and Taxonomy of the Compositae. *The American Midland Naturalist*, 53(2):478–511.
- Erdtman, G.
1966. *Pollen Morphology and Plant Taxonomy: Angiosperms*. xii + 553 pages. Stockholm: Almquist and Wiksell.
- Feuer, S.M., and M.O. Dillon
1982. Pollen Morphology and Ultrastructure of the Liabeae (Asteraceae). *Botanical Society of America Miscellaneous Publication*, 162:93.
- Hoffmann, O.
1894. Compositae. In A. Engler and K. Prantl, editors, *Die natürlichen Pflanzenfamilien*, 4(5):87–387. Leipzig.
- Jansen, R.K., and T.F. Stuessy
1980. Chromosome Counts of Compositae from Latin America. *American Journal of Botany*, 67(4):585–594.
- Jones, S.B.
1981. Synoptic Classification and Pollen Morphology of *Vernonia* (Compositae; Vernoniaceae) in the Old World. *Rhodora*, 83(833):59–75.
- Keeley, S.C., and S.B. Jones
1979. Distribution of Pollen Types in *Vernonia* (Vernoniaceae: Compositae). *Systematic Botany*, 4(3):195–202.
- Kirkman, L.K.
1981. Taxonomic Revision of *Centratherum* and *Phyllocephalum* (Compositae: Vernoniaceae). *Rhodora*, 83(833):1–24.
- Liens, P.
1970. Die Pollenkörner und Verwandtschaftsbeziehungen der Gattung *Eremothamnus* (Asteraceae). *Mitteilungen der Botanischen Staatssammlung, München*, 7:369–376.
- Martcorena, C., and O. Parra
1974. Morfología de los granos de polen y posición sistemática de *Anisochaeta* DC., *Chionopappus* Benth., *Fedea* Urb. y *Gochnatia glomeriflora* Gray (Compositae). *Boletín Sociedad Biología de Concepción*, 47:187–197.
- Nash, D.L.
1976. Tribe I: Vernoniaceae. In D.L. Nash and L.O. Williams, Compositae. *Flora of Guatemala*, 24(12):4–32.
- Nordenstam, B.
1977. Senecioneae and Liabeae: Systematic Review. In Heywood, Harborne, and Turner, editors, *The Biology and Chemistry of the Compositae*, pages 799–830. London and New York: Academic Press.
- Robinson, H.
1977. An Analysis of the Characters and Relationships of the Tribes Eupatorieae and Vernoniaceae (Asteraceae). *Systematic Botany*, 2(3):199–208.
1978. 190 (2), Compositae—Liabeae. *Flora of Ecuador*, 8:1–62.
1979. Two New Genera of Vernoniaceae (Asteraceae) from Brasil, *Heterocypselia* and *Pseudostiffitia*. *Phytologia*, 44(7):442–450.
1981. A Revision of the Tribal and Subtribal Limits of the Heliantheae (Asteraceae). *Smithsonian Contributions to Botany*, 51: 102 pages.
1983a. A Generic Review of the Tribe Liabeae (Asteraceae). *Smithsonian Contributions to Botany*, 54: 69 pages.
1983b. Studies in the Liabeae (Asteraceae), XVI: New Taxa from Peru. *Phytologia*, 54(1):62–65.
- Robinson, H., and R.D. Brettell
1973a. Tribal Revisions in the Asteraceae, III: A New Tribe, Liabeae. *Phytologia*, 25(6):404–407.

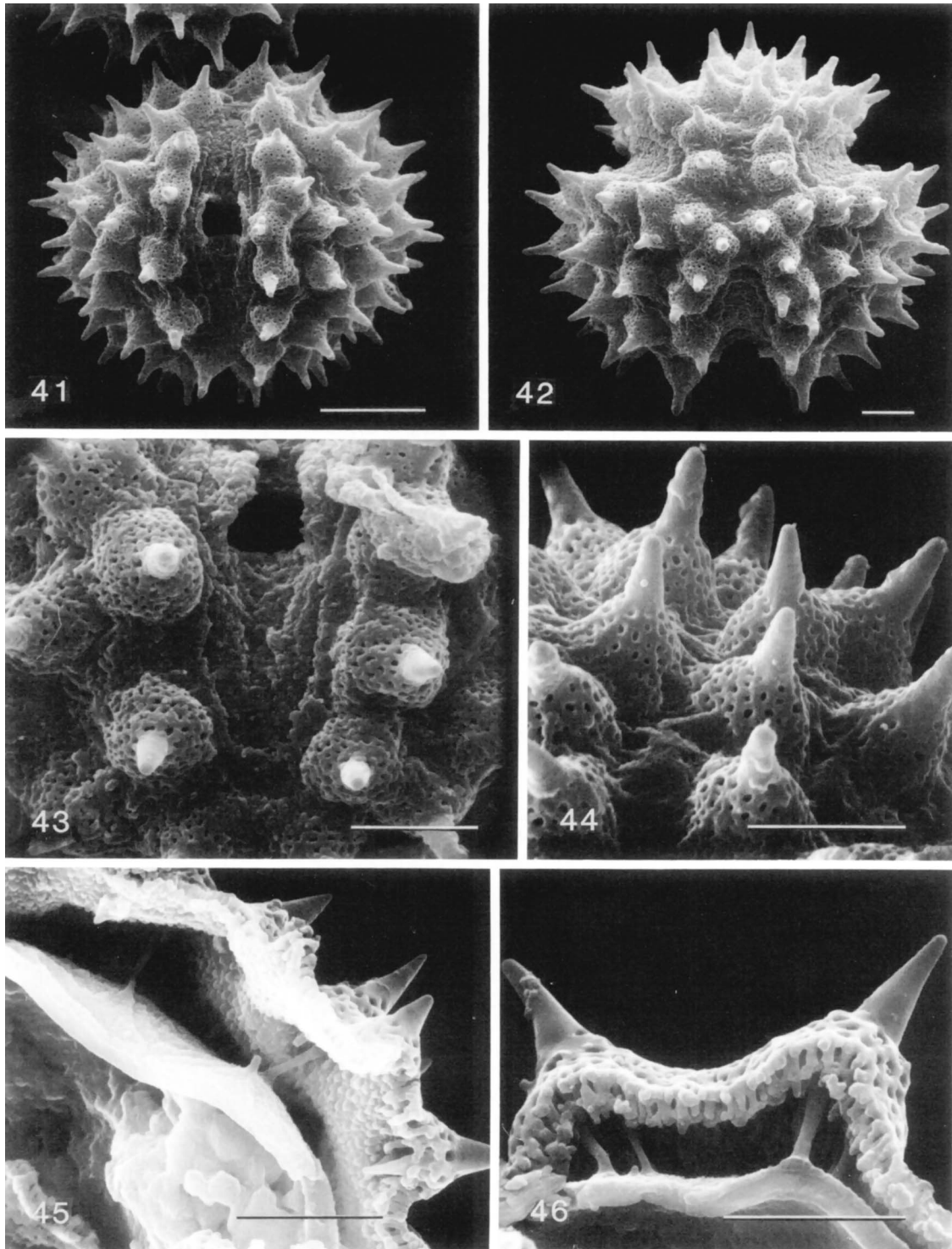
- 1973b. Tribal Revisions in the Asteraceae, VIII: A New Tribe, Ursinieae. *Phytologia*, 26(2):76-85.
- 1973c. Tribal Revisions in the Asteraceae, XI: A New Tribe, Eremothamneae. *Phytologia*, 26(3):163-166.
1974. Studies in the Liabeae (Asteraceae), II: Preliminary Survey of the Genera. *Phytologia*, 28(1):43-63.
- Robinson, H., A.M. Powell, R.M. King, and J.F. Weedin
1985. Chromosome Numbers in Compositae, XV: Liabeae. *Annals of the Missouri Botanical Garden*, 72:469-479.
- Rydberg, P.A.
1927. (Carduales) Carduaceae, Liabeae, Neurolaeneae, Senecioneae (pars). *North American Flora*, 34(4):289-360.
- Sandwith, N.Y.
1956. Contributions to the Flora of Tropical America, LXI: Notes on *Philoglossa*. *Kew Bulletin*, 1956:289-293.
- Skvarla, J.J., and B.L. Turner
1966. Systematic Implications from Electron Microscopic Studies of Compositae Pollen: A Review. *Annals of the Missouri Botanical Garden*, 53:200-256.
- Skvarla, J.J., B.L. Turner, V.C. Patel, and A.S. Tomb
1977. Pollen Morphology in the Compositae and in Morphologically Related Families. In Heywood, Harborne, and Turner, editors, *The Biology and Chemistry of the Compositae*, pages 141-248. London and New York: Academic Press.
- Stix, E.
1960. Pollenmorphologische untersuchungen an Compositen. *Grana Palynologica*, 2(2):41-104, plates 1-21.
- Tomb, A.S.
1975. Pollen Morphology in Tribe Lactuceae (Compositae). *Grana*, 15(1/3):79-89.
- Turner, B.L., and A.M. Powell
1977. Helenieae: Systematic Review. In Heywood, Harborne, and Turner, editors, *The Biology and Chemistry of the Compositae*, pages 699-737. London and New York: Academic Press.
- Wagnitz, G.
1976. Systematics and Phylogeny of the Compositae. *Plant Systematics and Evolution*, 125:29-46.



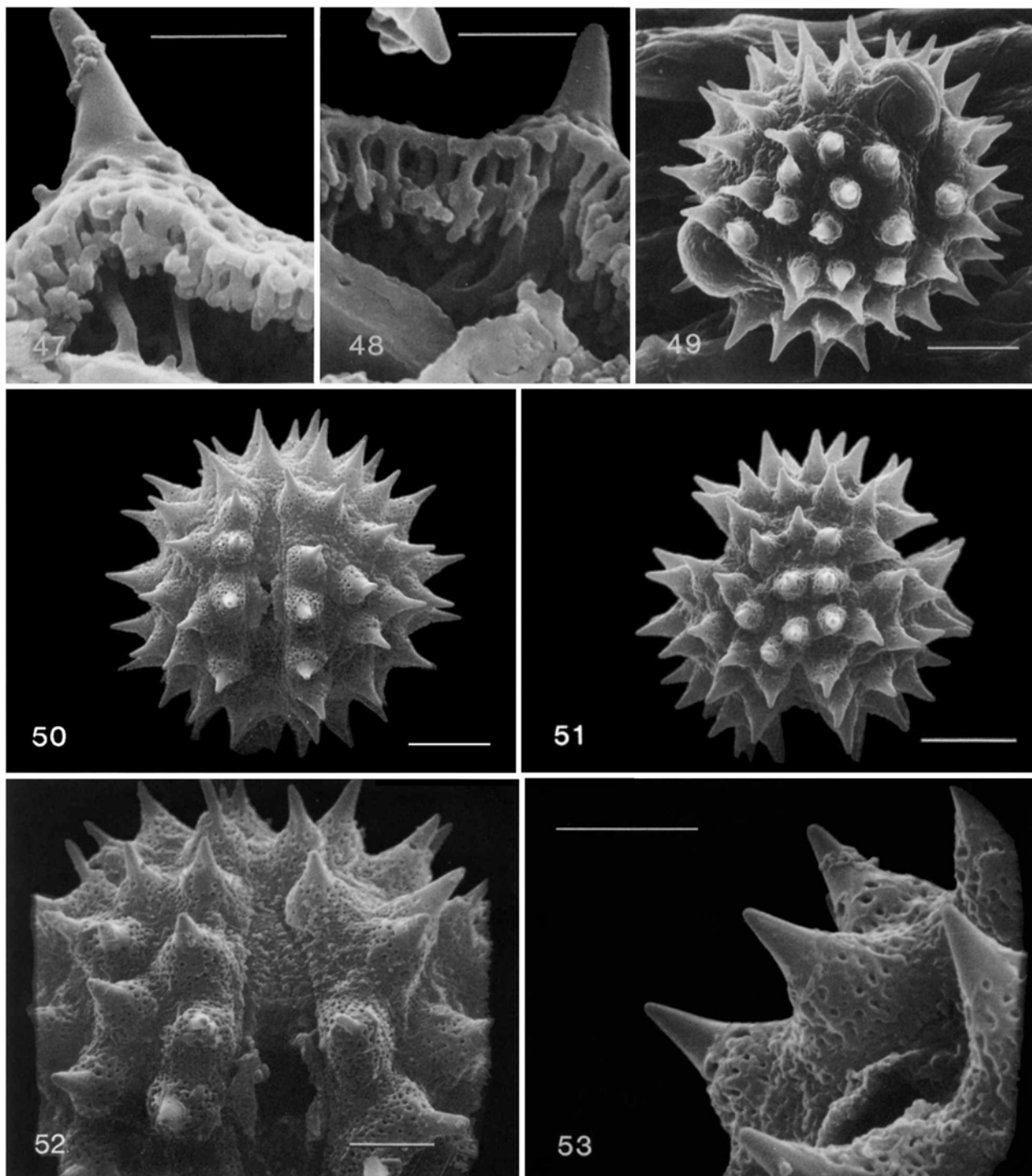
FIGURES 1-17.—Basal columellar patterns of the tribe Liabeae in vertical view (for citation of specimens see appendix): 1, *Paranephelius jelskii*; 2, *P. uniflorus*; 3, *Austroliabum polymnioides*; 4, *Cacosmia rugosa*; 5, *Chionopappus benthamii*; 6, *Ferreyranthus excelsus*; 7, *F. vernonioides*; 8, *Sinclairia klattii*; 9, 10, *S. deamii*; 11, *Liabellum angustissimum*; 12, 13, *Liabum barahonense*; 14, *L. bourgeaui*; 15, *L. eggersii*; 16, *L. falcatum*; 17, *L. poiteaui*.



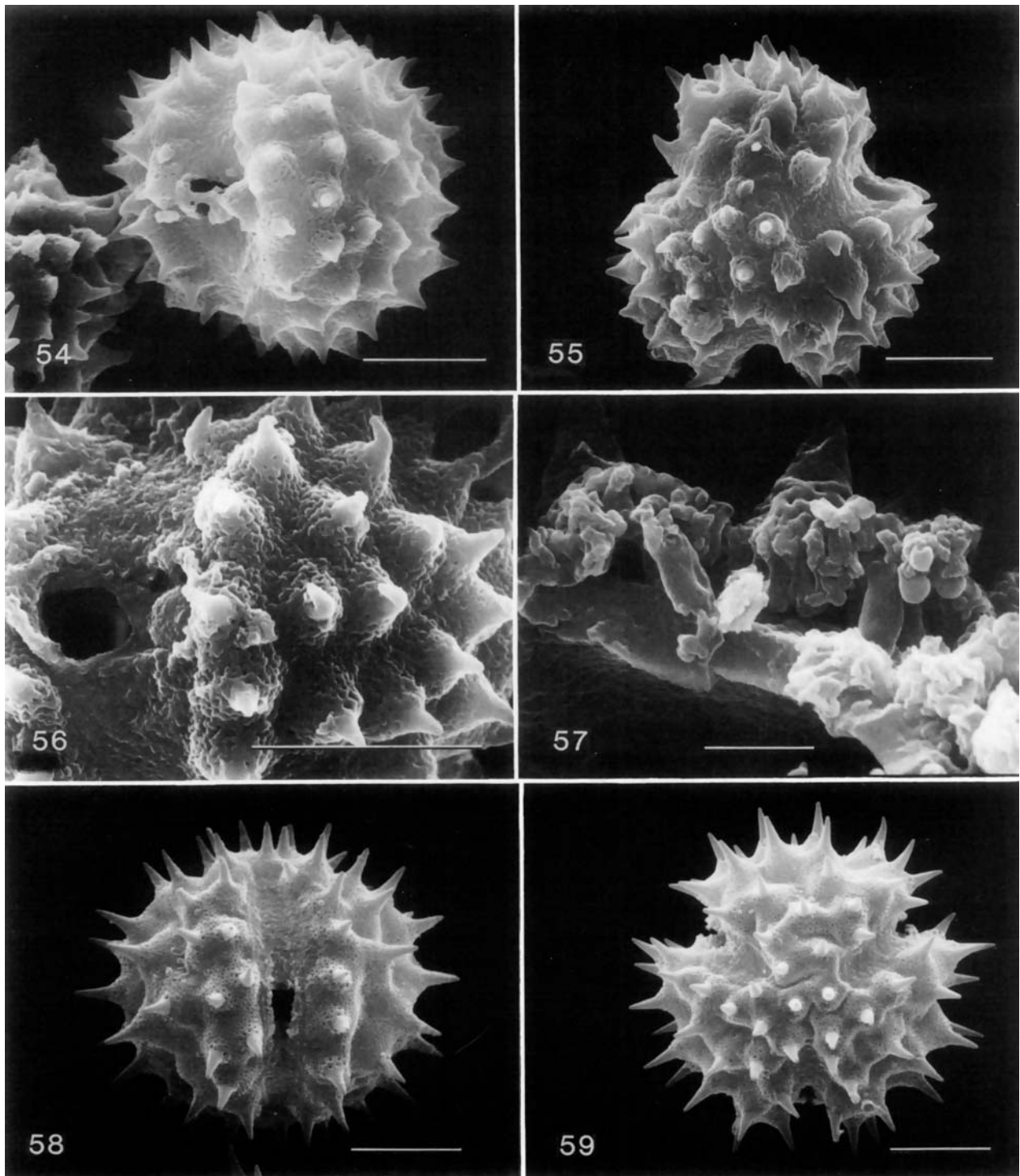
FIGURES 18-40.—Basal columellar patterns of the tribe Liabeae in vertical view: 18, *Liabum selleanum*; 19, 20, *L. subacaule*; 21, *Oligactis volubilis*; 22, *O. (Andromachiopsis) coriacea*; 23, *O. (A.) pichinchensis*; 24, *Erato polymnioides*; 25, *Philoglossa mimuloides* f. *sapida*; 26, *P. peruviana* DC; 27, *Chrysactinium acaule*; 28, *C. hieracioides*; 29, *Munnozia foliosa*; 30-32, *M. jussieui*; 33, *M. lanceolata*; 34, *M. lyrata*; 35, *M. senecionidis*; 36, *M. silphioides*; 37, *M. subviridis*; 38, *M. venosissima*; 39, *M. (Kastnera) annua*; 40, *M. (K.) nivea*.



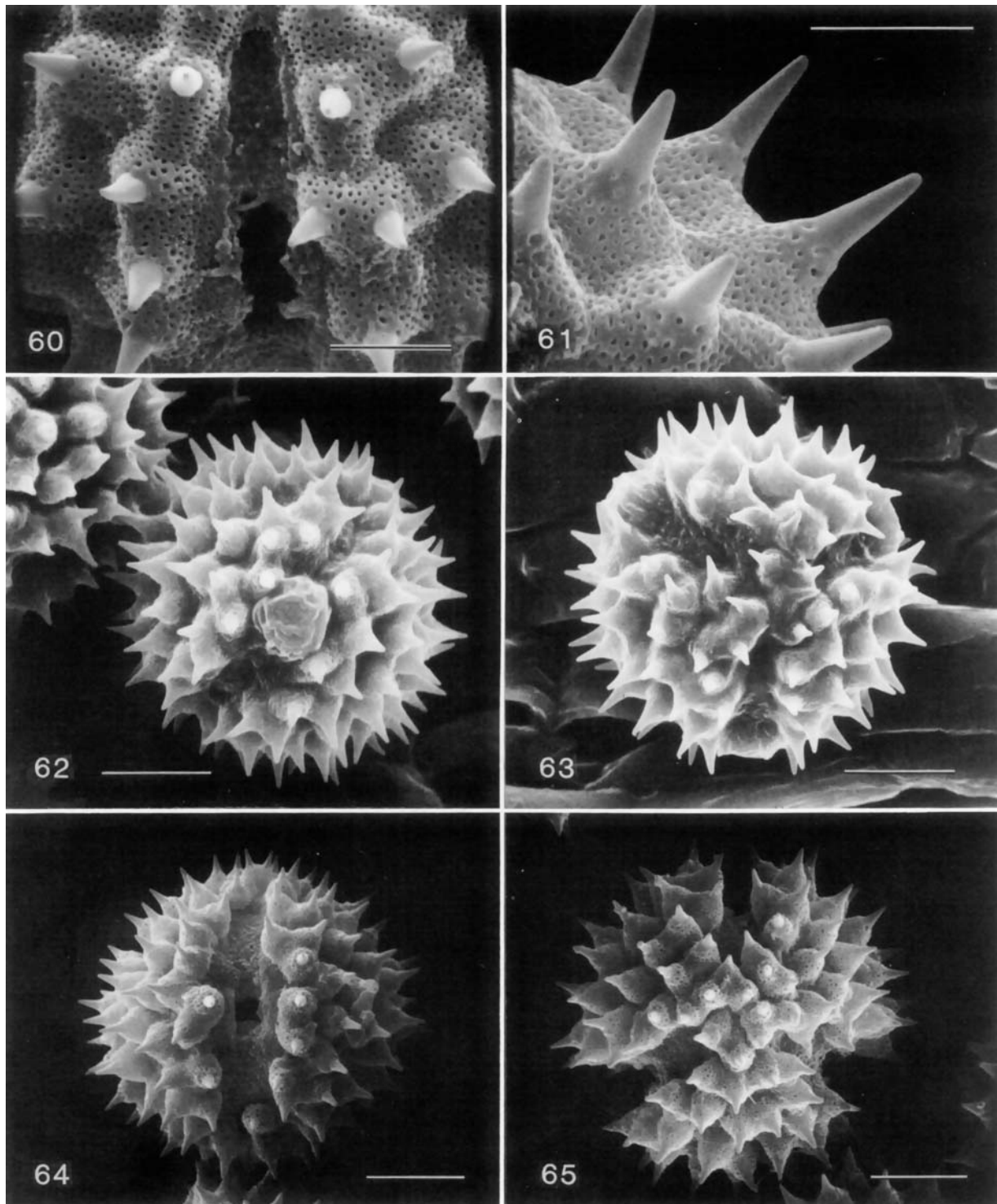
FIGURES 41-46.—Scanning Electron Micrographs of tribe Liabeae, *Paranephelius uniflorus* pollen: 41, colpar view; 42, polar view; 43, colpus; 44, intercolpar area; 45, broken tectum; 46, broken tectum. (Scale lines 41 = 10 μm ; 42-46 = 5 μm .)



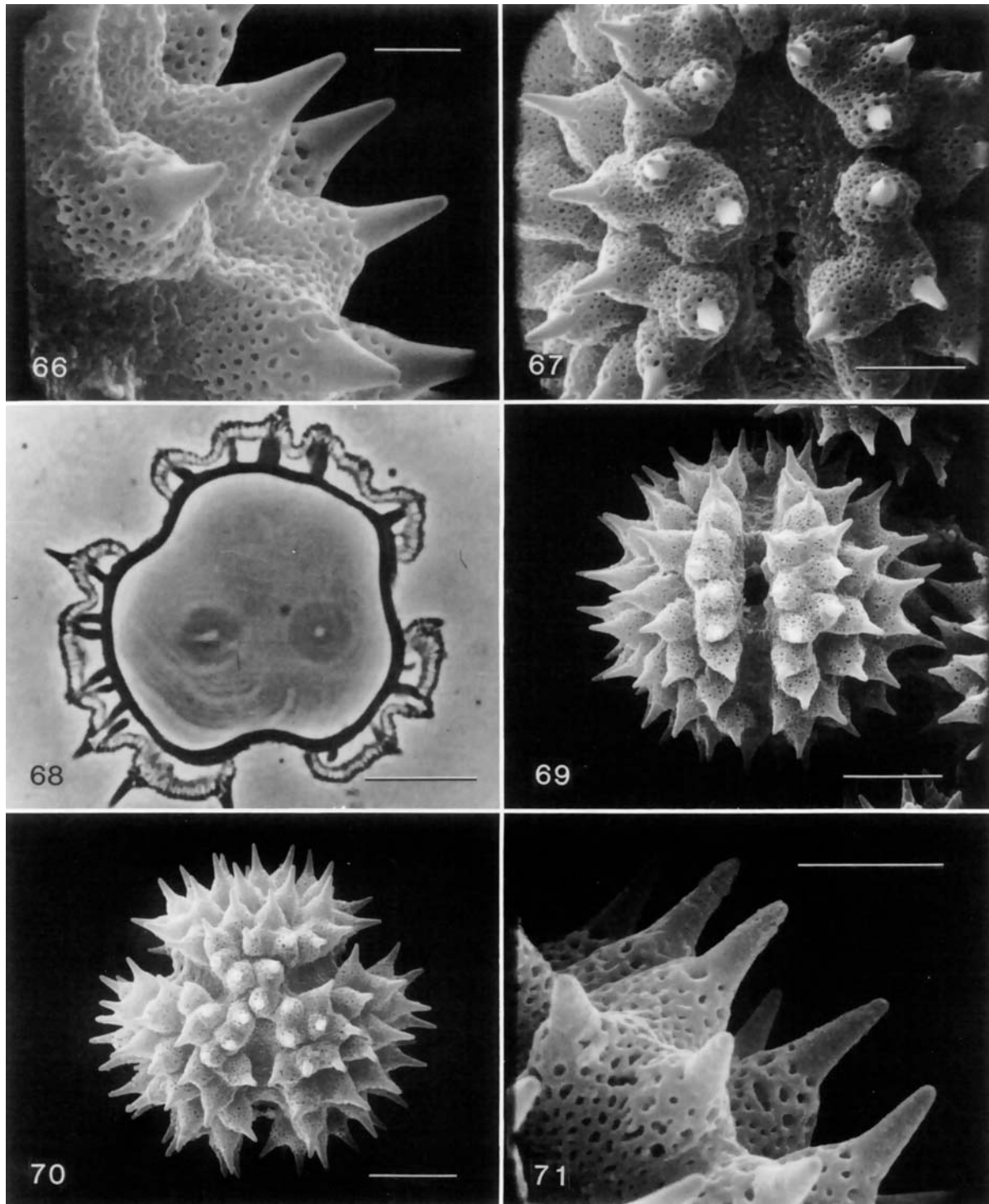
FIGURES 47–53.—SEM of tribe Liabeae, *Paranephelius* and *Pseudonoseresis* pollen: 47, *Paranephelius uniflorus*; 48, *P. jelskii*; 49, *P. uniflorus*, unacetolized grain. *Pseudonoseresis discolor*: 50, colpar view; 51, polar view; 52, colpus; 53, spines. (Scale lines 47, 48 = 2 μm ; 49–51 = 10 μm ; 52 = 5 μm ; 53 = 4 μm .)



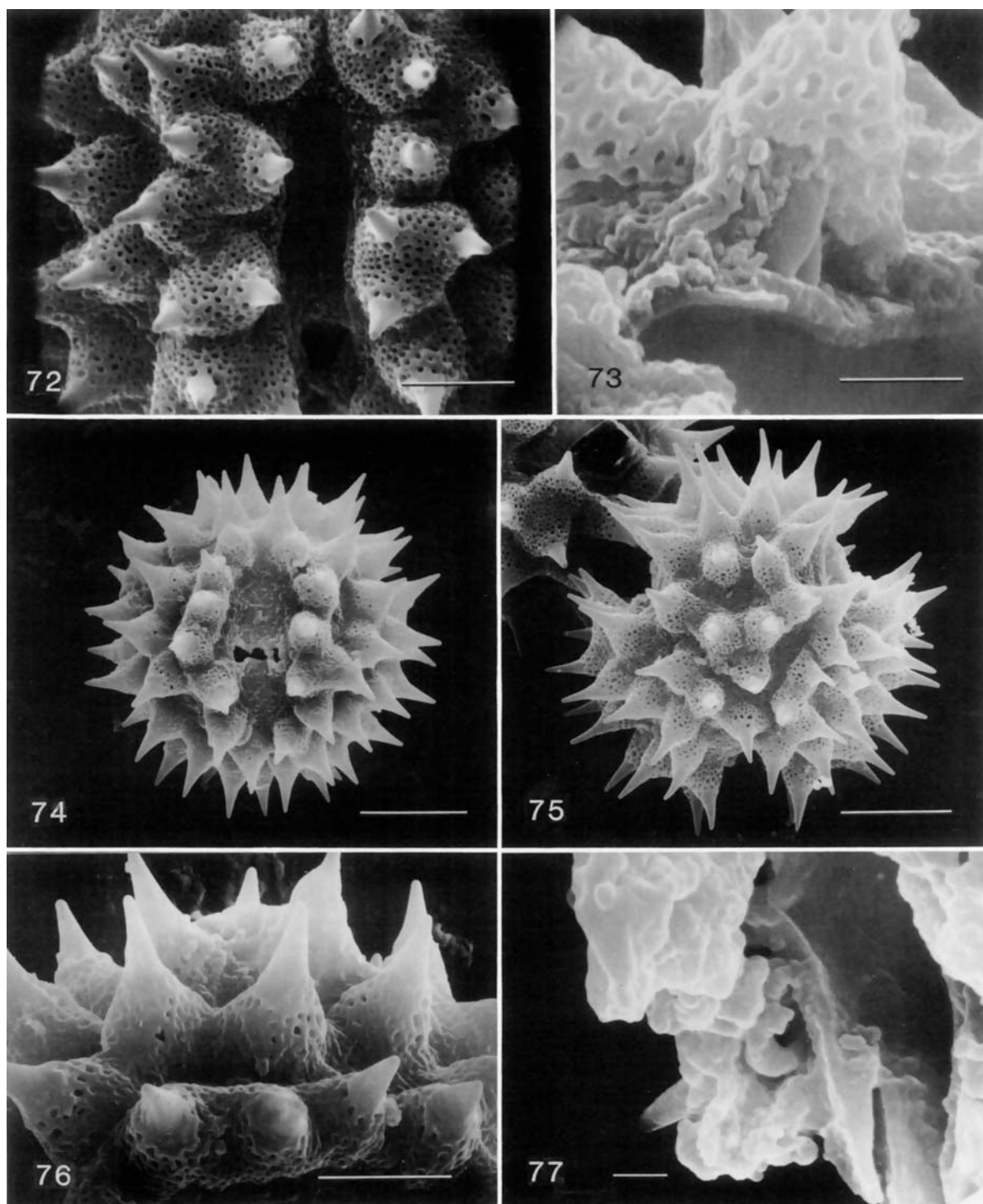
FIGURES 54–59.—SEM of tribe Liabeae, *Bishopanthus* and *Cacosmia* pollen. *Bishopanthus soliceps*: 54, equatorial view with colpus; 55, polar view; 56, intercolpar region; 57, broken tectum. *Cacosmia rugosa*: 58, colpar view; 59, polar view. (Scale lines 54–56, 58, 59 = 10 μ m; 57 = 2 μ m.)



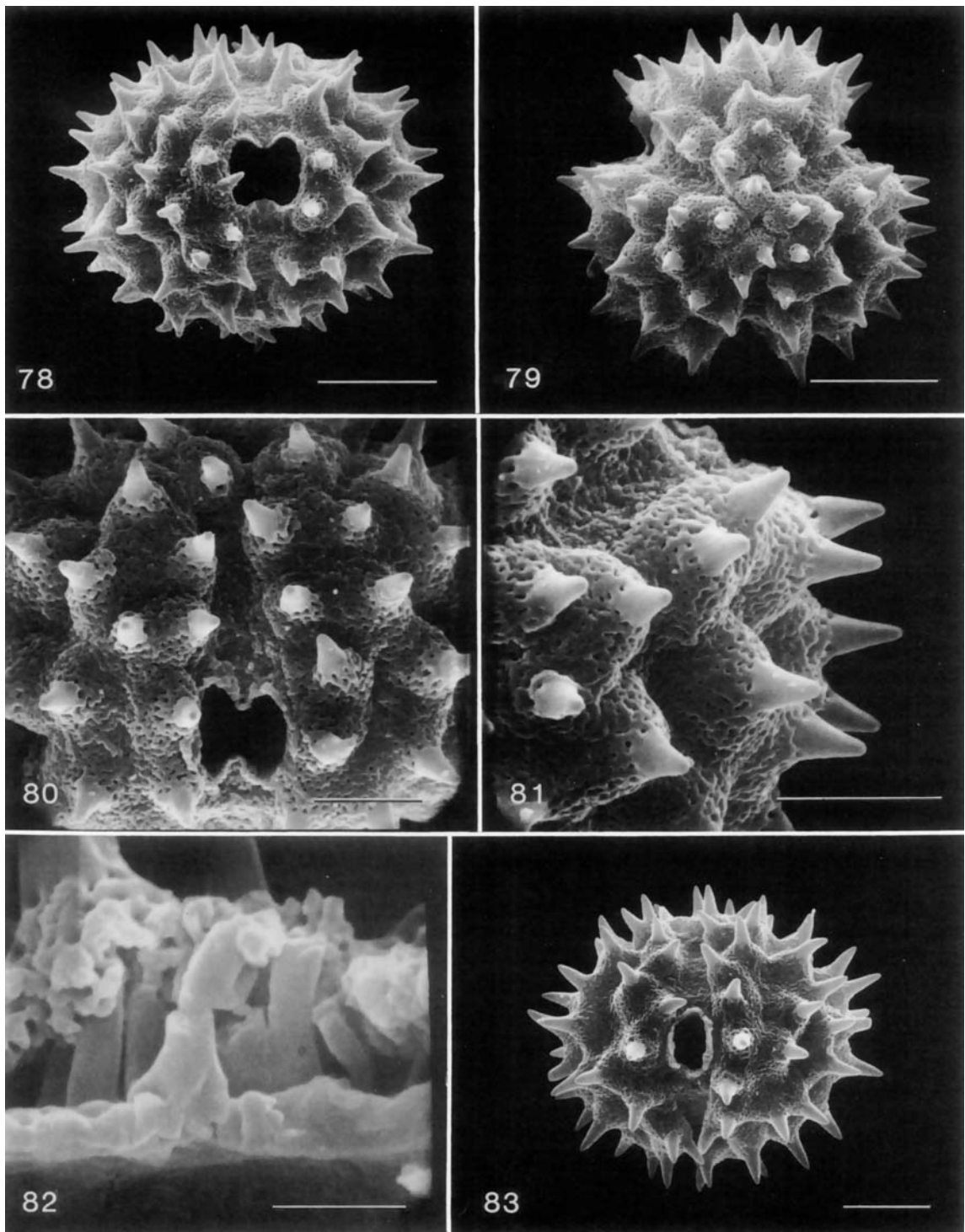
FIGURES 60-65.—SEM of tribe Liabeae, *Cacosmia* and *Chionopappus* pollen. *Cacosmia rugosa*: 60, colpus; 61, spines; 62, 63, unacetolized grains. *Chionopappus benthamii*: 64, colpar view; 65, polar view. (Scale lines 60, 61 = 5 μm ; 62-65 = 10 μm .)



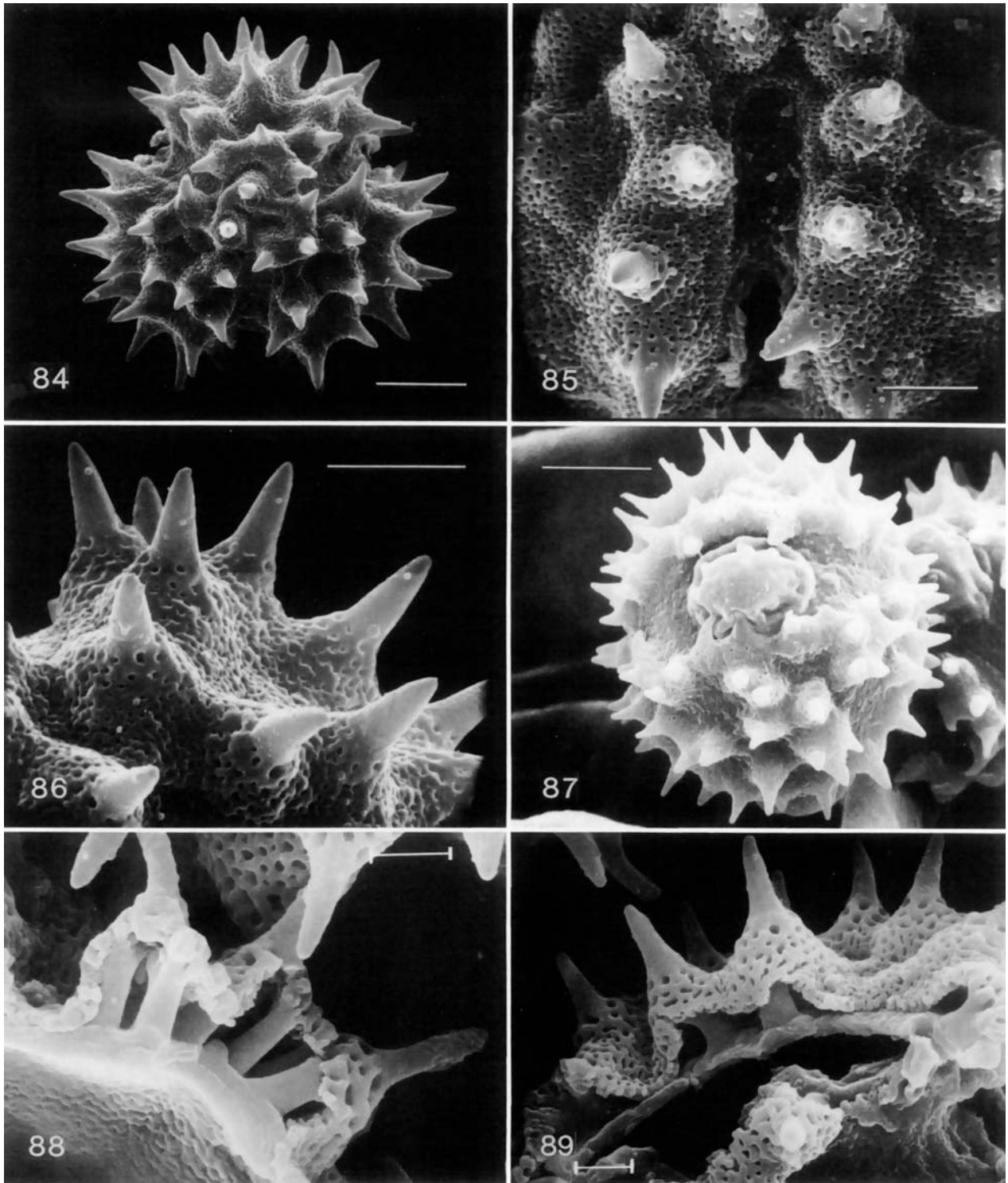
FIGURES 66-71.—SEM of tribe Liabeae, *Chionopappus* and *Austroliabum* pollen. *Chionopappus benthamii*: 66, spines; 67, colpus; 68, microphotograph of microtome section. *Austroliabum candidum*: 69, colpar view; 70, polar view; 71, spines. (Scale lines 66 = 2 μm ; 67 = 5 μm ; 68-70 = 10 μm ; 71 = 4 μm .)



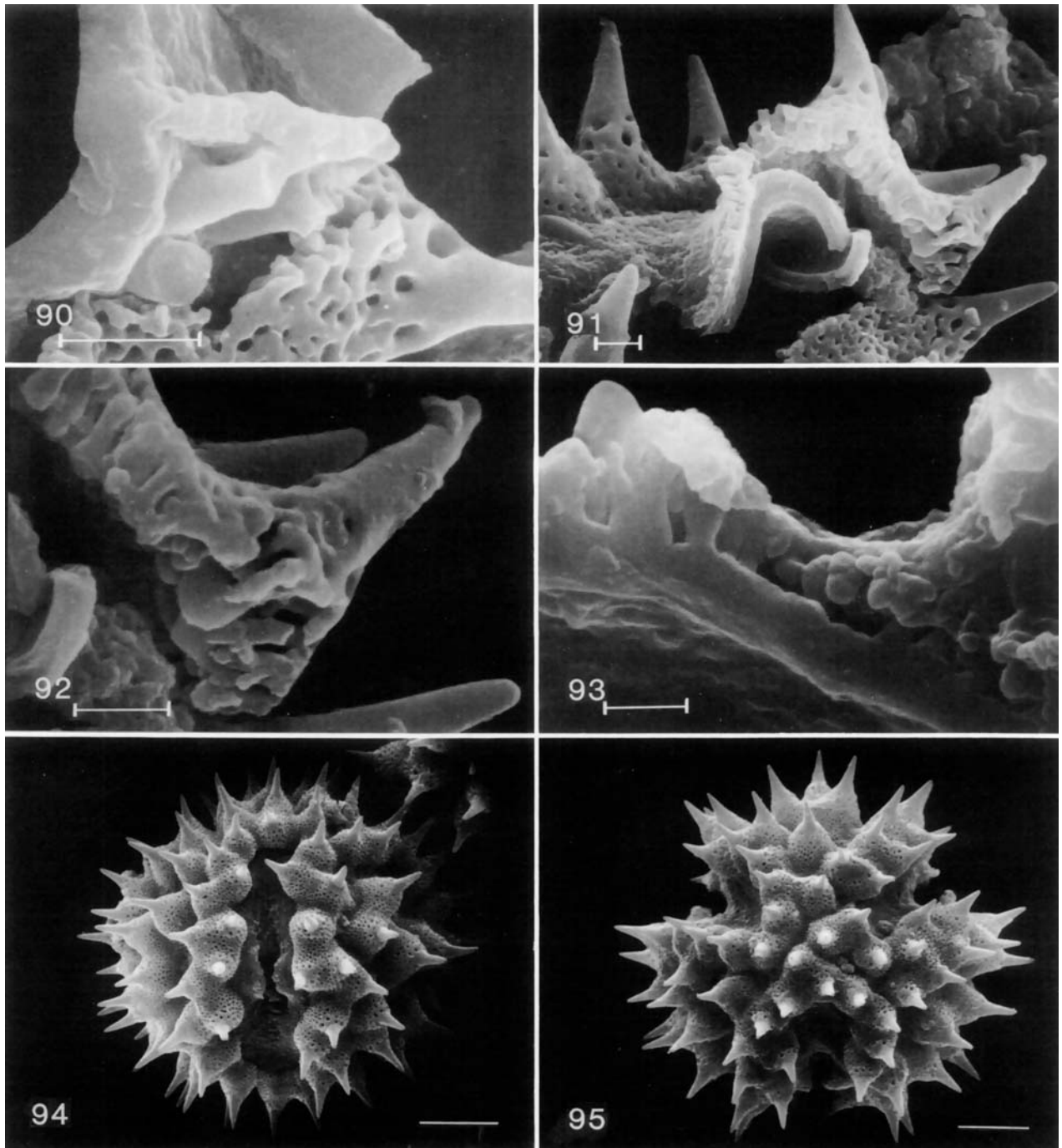
FIGURES 72-77.—SEM of tribe Liabeae, *Austroliabum* and *Microliabum* pollen. *Austroliabum candidum*: 72, colpus; *A. polymnioides*: 73, broken grain. *Microliabum humile*: 74, colpar view; 75, polar view; 76, spines; 77, broken grain. (Scale lines 72, 76 = 5 μm ; 73 = 2 μm ; 74, 75 = 10 μm ; 77 = 1 μm .)



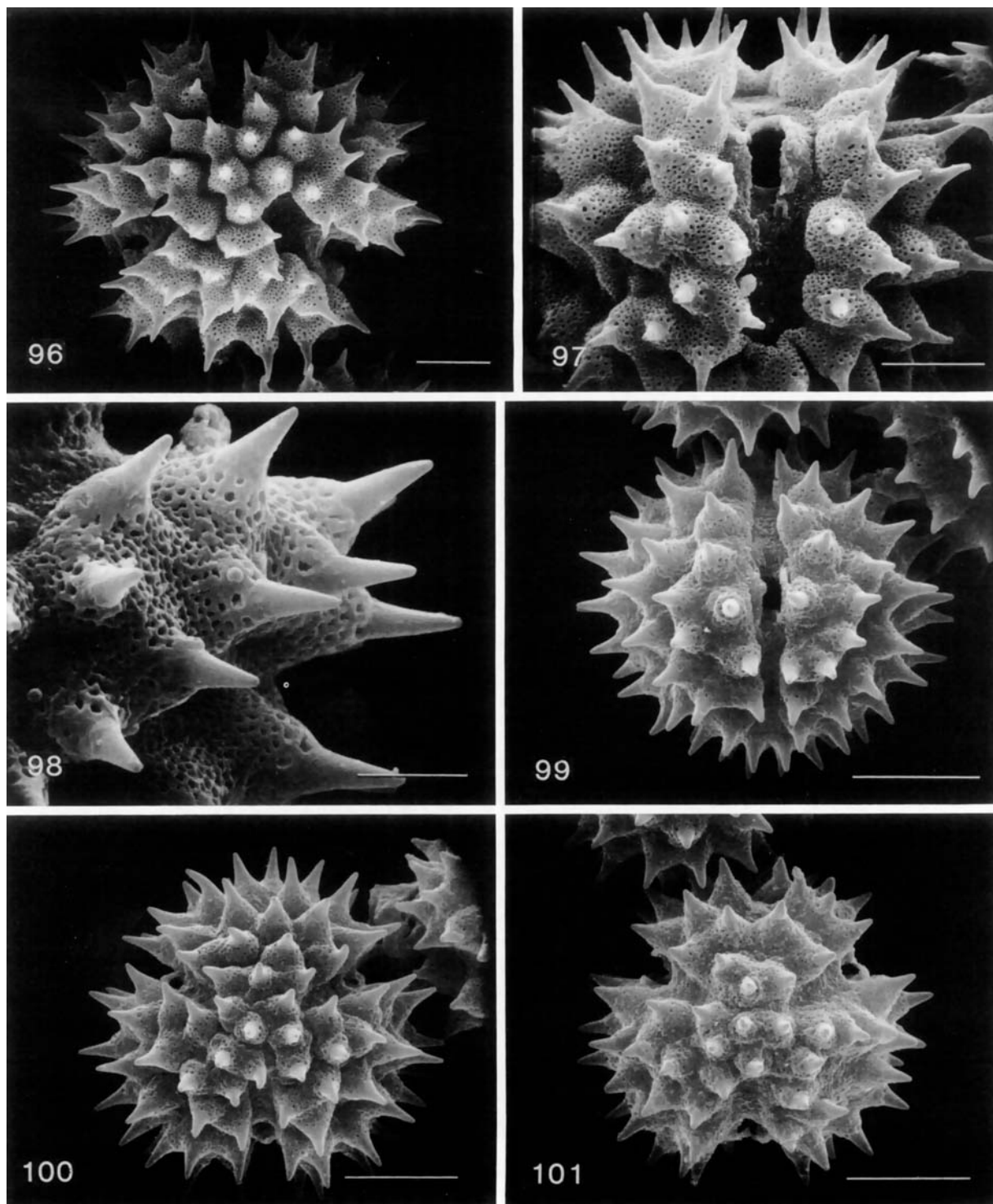
FIGURES 78–83.—SEM of tribe Liabeae, *Ferreyranthus* and *Sinclairia* pollen. *Ferreyranthus verbascifolius*: 78, colpar view; 79, polar view; 80, colpus; 81, spines. *F. rugosus*: 82, broken grain. *Sinclairia discolor*: 83, colpar view. (Scale lines 78, 79, 83 = 10 μm ; 80, 81 = 5 μm ; 82 = 2 μm .)



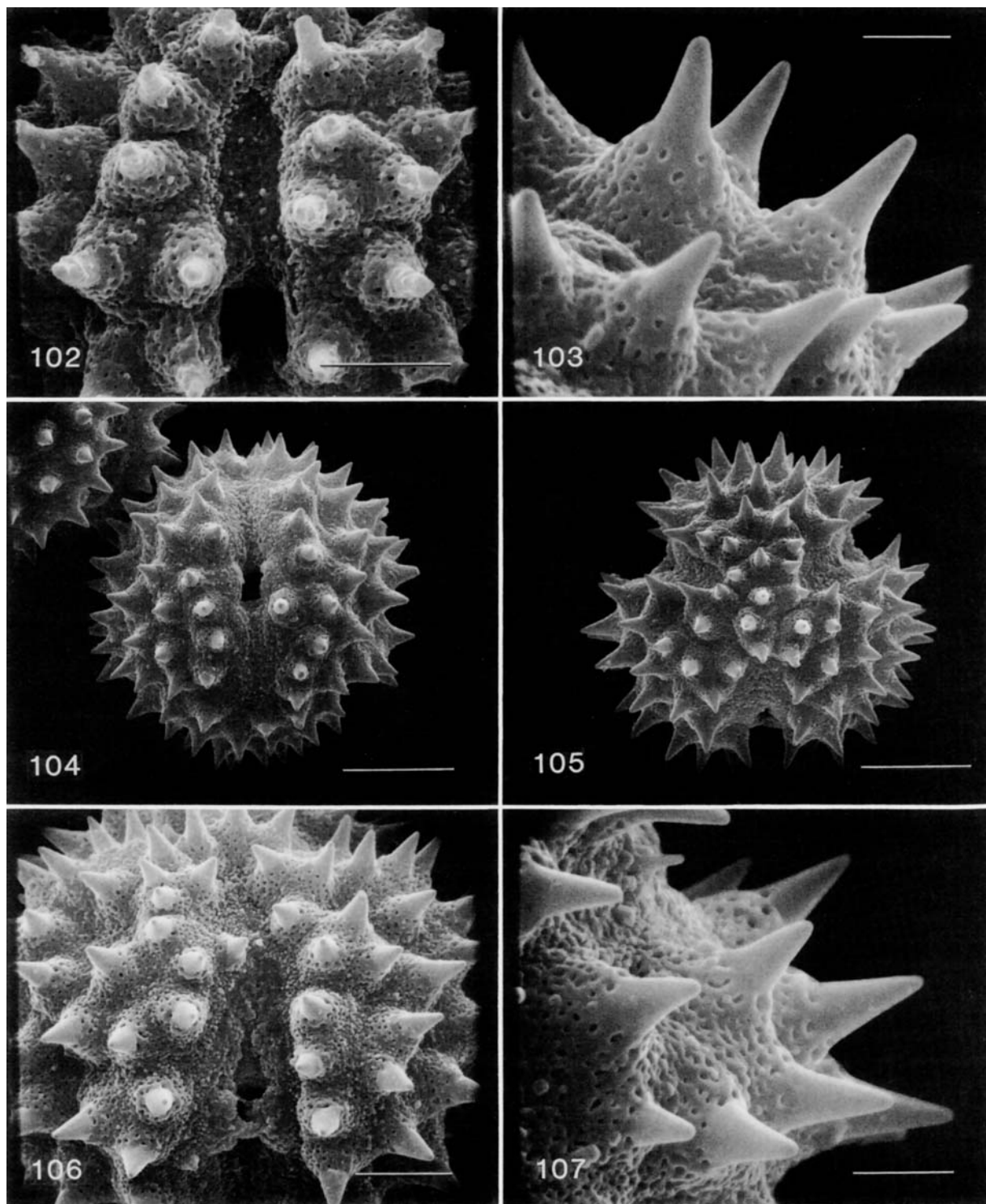
FIGURES 84–89.—SEM of tribe Liabeae, *Sinclairia* pollen. *Sinclairia discolor*: 84, polar view; 85, colpus; 86, spines; 87, unacetolized grain. *S. deamii*: 88, 89, Standley 19695, broken grains. (Scale lines 84, 87 = 10 μm ; 85, 86 = 5 μm ; 88, 89 = 2 μm .)



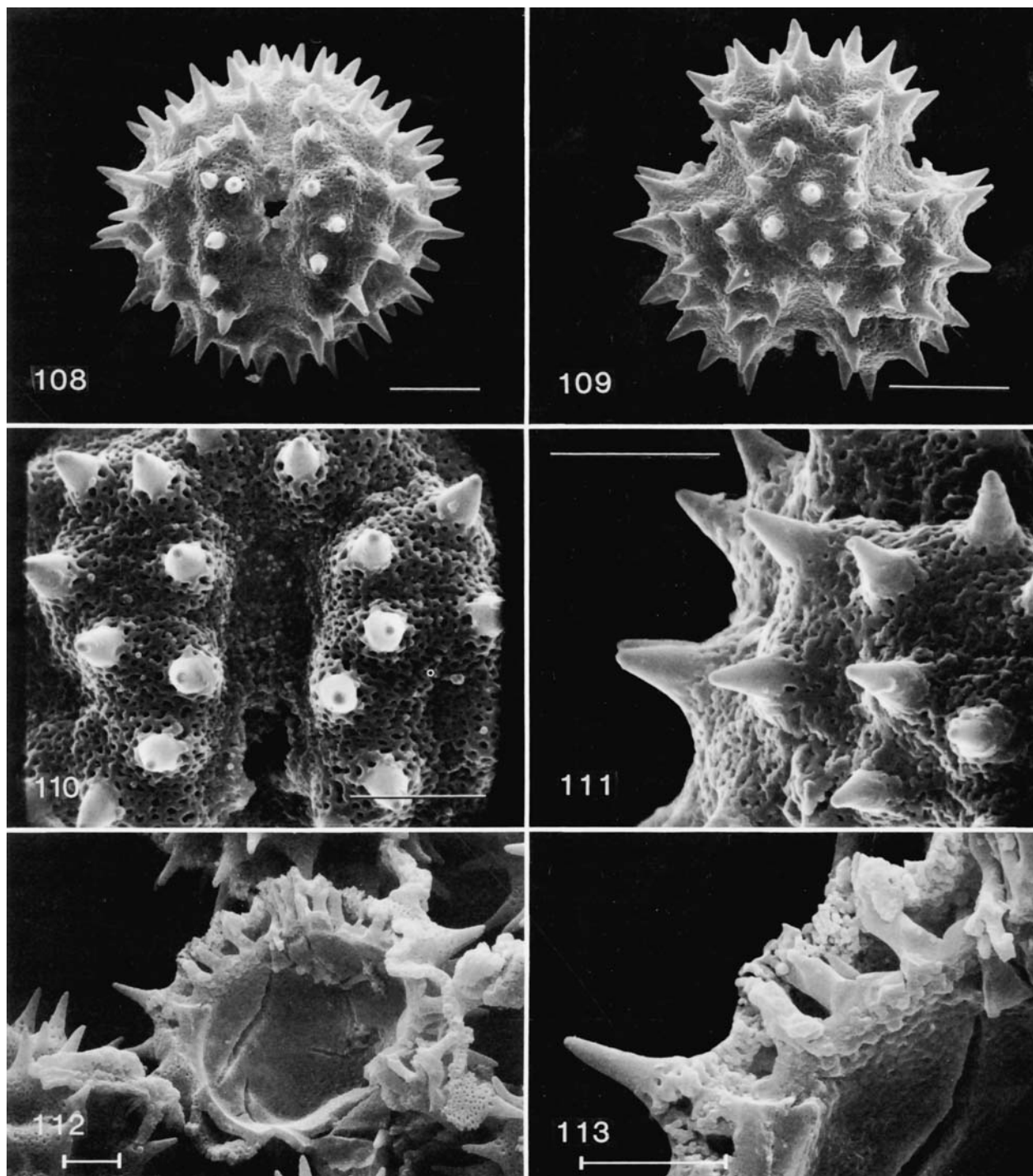
FIGURES 90-95.—SEM of tribe Liabeae, *Sinclairia* and *Liabellum* pollen. *Sinclairia deamii*: 90, Standley 19695; 91-93, Edwards 568. *Liabellum palmeri*: 94, colpar view; 95, polar view. (Scale lines 90 = 2 μm ; 91-93 = 1 μm ; 94, 95 = 10 μm .)



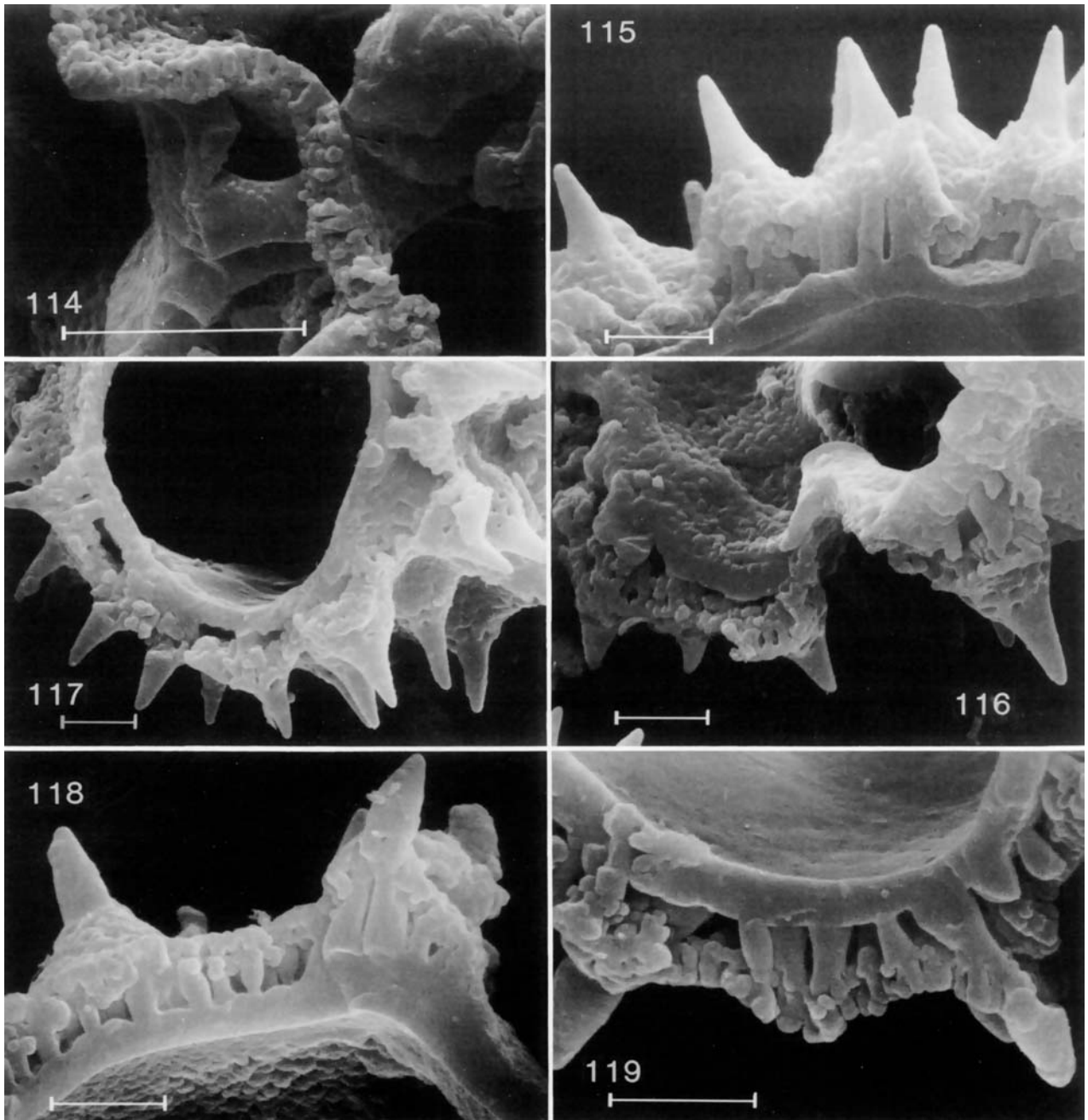
FIGURES 96–101.—SEM of tribe Liabeae, *Liabellum* and *Oligactis* pollen. *Liabellum palmeri*: 96, polar view; 97, colpus; 98, spines. *Oligactis volubilis*: 99, colpar view; 100, 101, polar views. (Scale lines 96, 97, 99–101 = 10 μm ; 98 = 5 μm .)



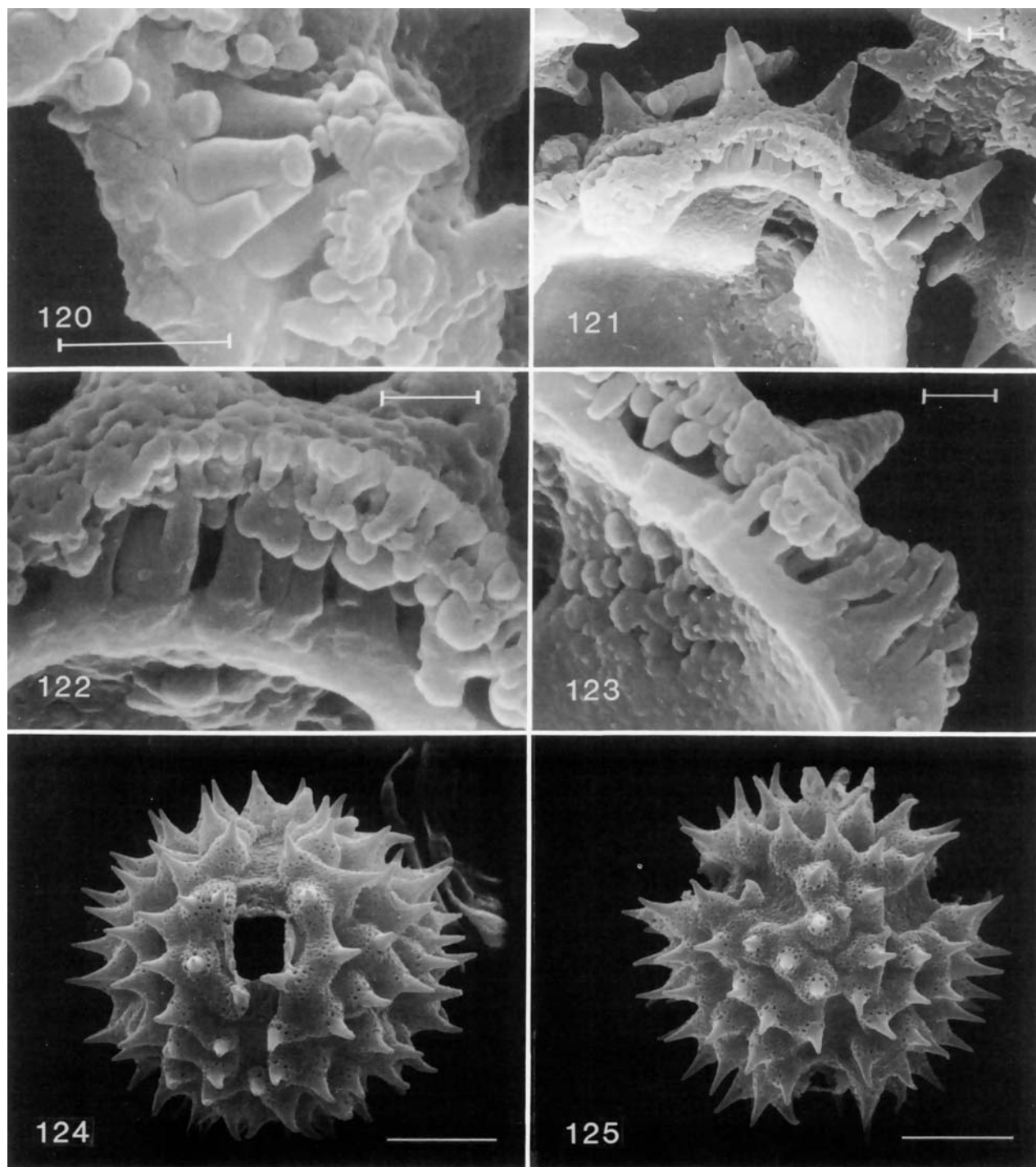
FIGURES 102–107.—SEM of tribe Liabeae, *Oligactis* pollen. *O. volubilis*: 102, colpus; 103, spines. *Oligactis* (*Andromachiopsis*) *pichinchensis*: 104, colpar view; 105, polar view; 106, colpus; 107, spines. (Scale lines 102, 106 = 5 μm ; 103, 107 = 2 μm ; 104, 105 = 10 μm .)



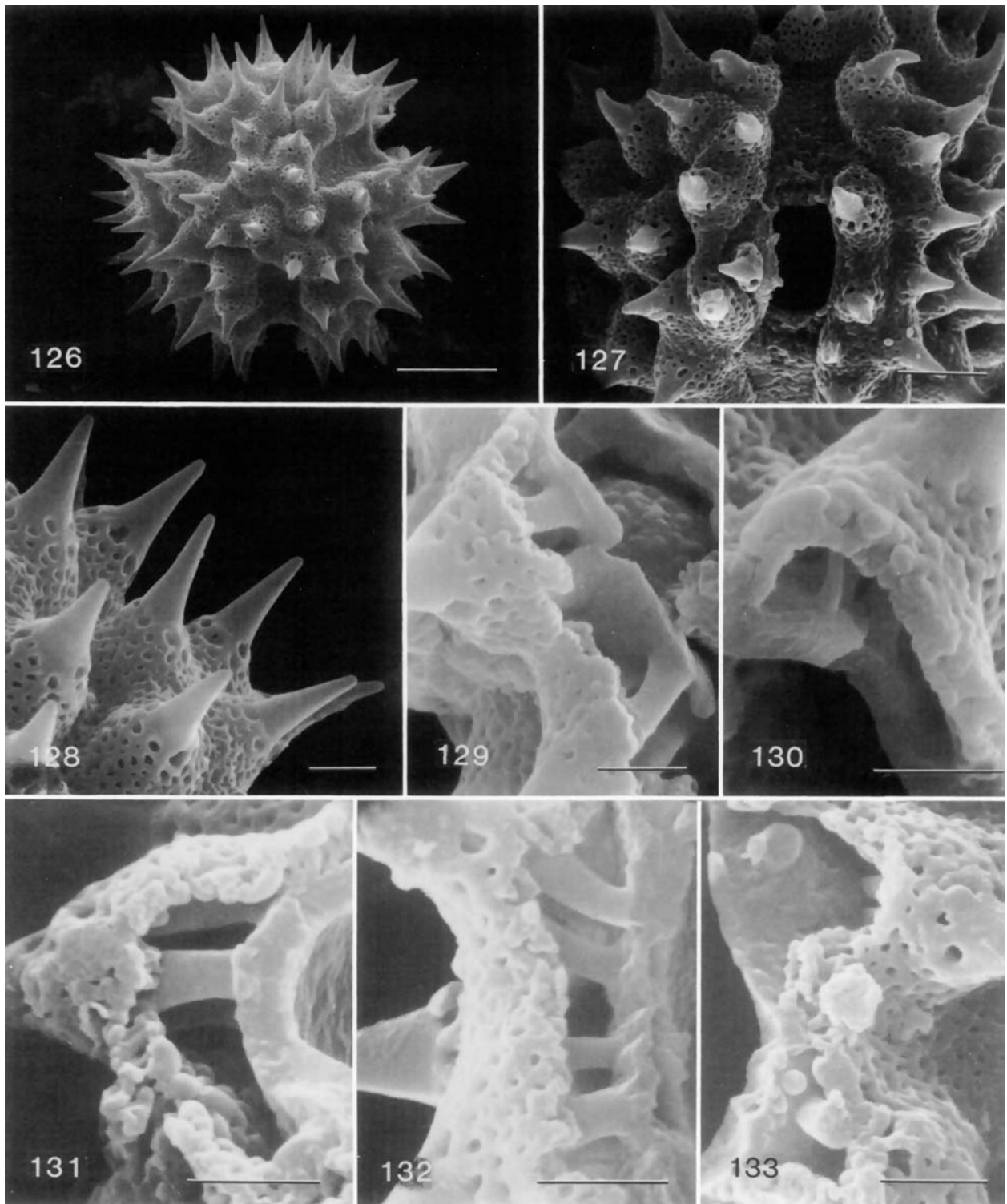
FIGURES 108–113.—SEM of tribe Liabeae, *Liabum* pollen. *L. umbellatum*: 108, colpar view; 109, polar view; 110, colpus; 111, spines. *L. igniarium*: 112, 113, broken grains. (Scale lines 108, 111, 112, 113 = 5 μm ; 109, 110 = 10 μm .)



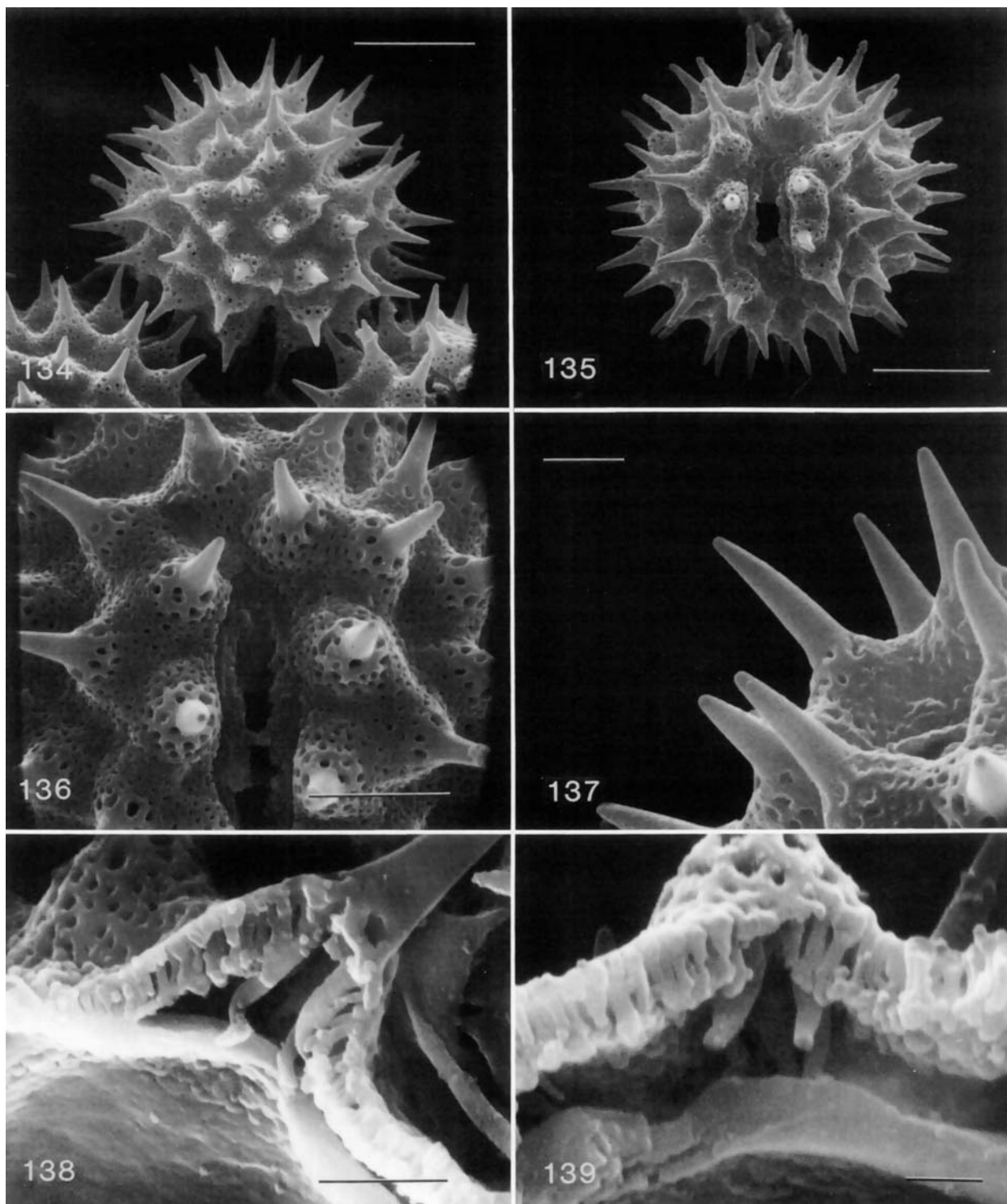
FIGURES 114–119.—SEM of tribe Liabeae, *Liabum* pollen, broken grains. 114–117, *L. igniarium*. 118, 119, *L. subacaule*. (Scale lines 114 = 5 μm ; 115–119 = 2 μm .)



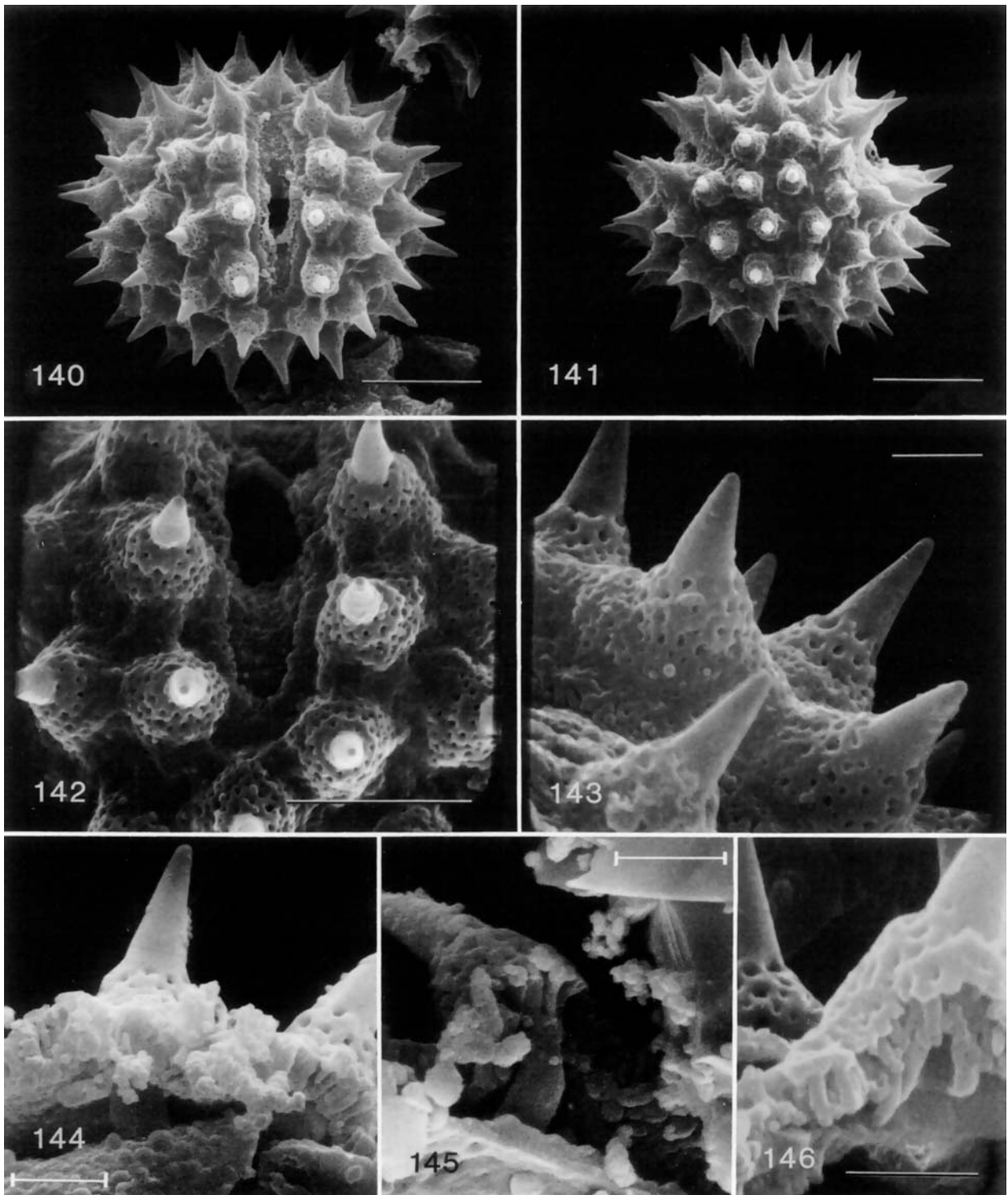
FIGURES 120-125.—SEM of tribe Liabeae, *Liabum* and *Erato* pollen. *L. subacaule*: 120, broken grains. *L. barahonense*: 121-123, broken grains. *Erato polymnioides*: 124, colpar view; 125, polar view. (Scale lines 120 = 2 μ m; 121-123 = 1 μ m; 124, 125 = 10 μ m.)



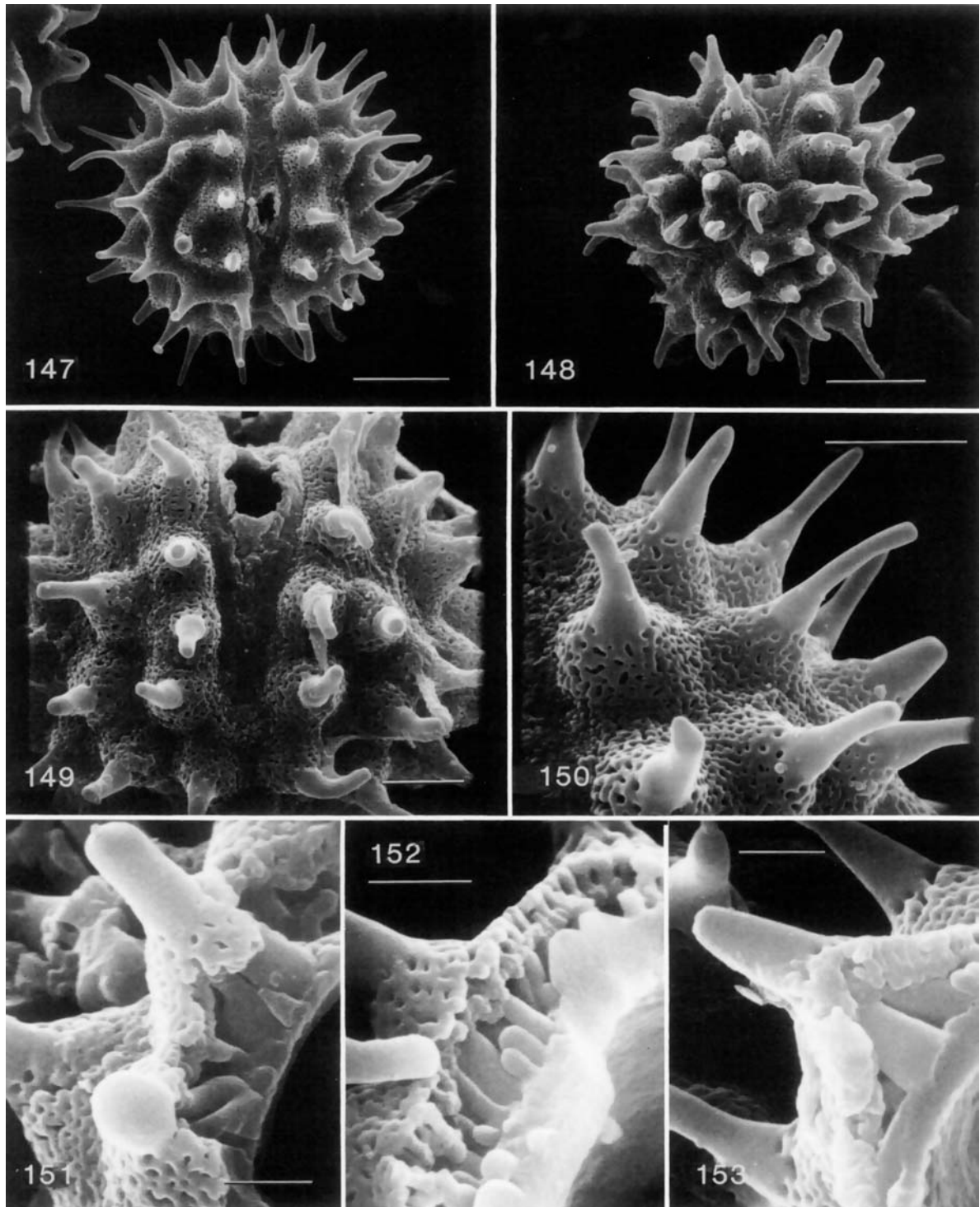
FIGURES 126–133.—SEM of tribe Liabeae, *Erato* pollen. *Erato polymnioides*: 126, polar view; 127, colpus; 128, spines; 129, 130, broken grains. *E. sodiroi*: 131–133, broken grains. (Scale lines 126 = 10 μm ; 127 = 5 μm ; 128–133 = 2 μm .)



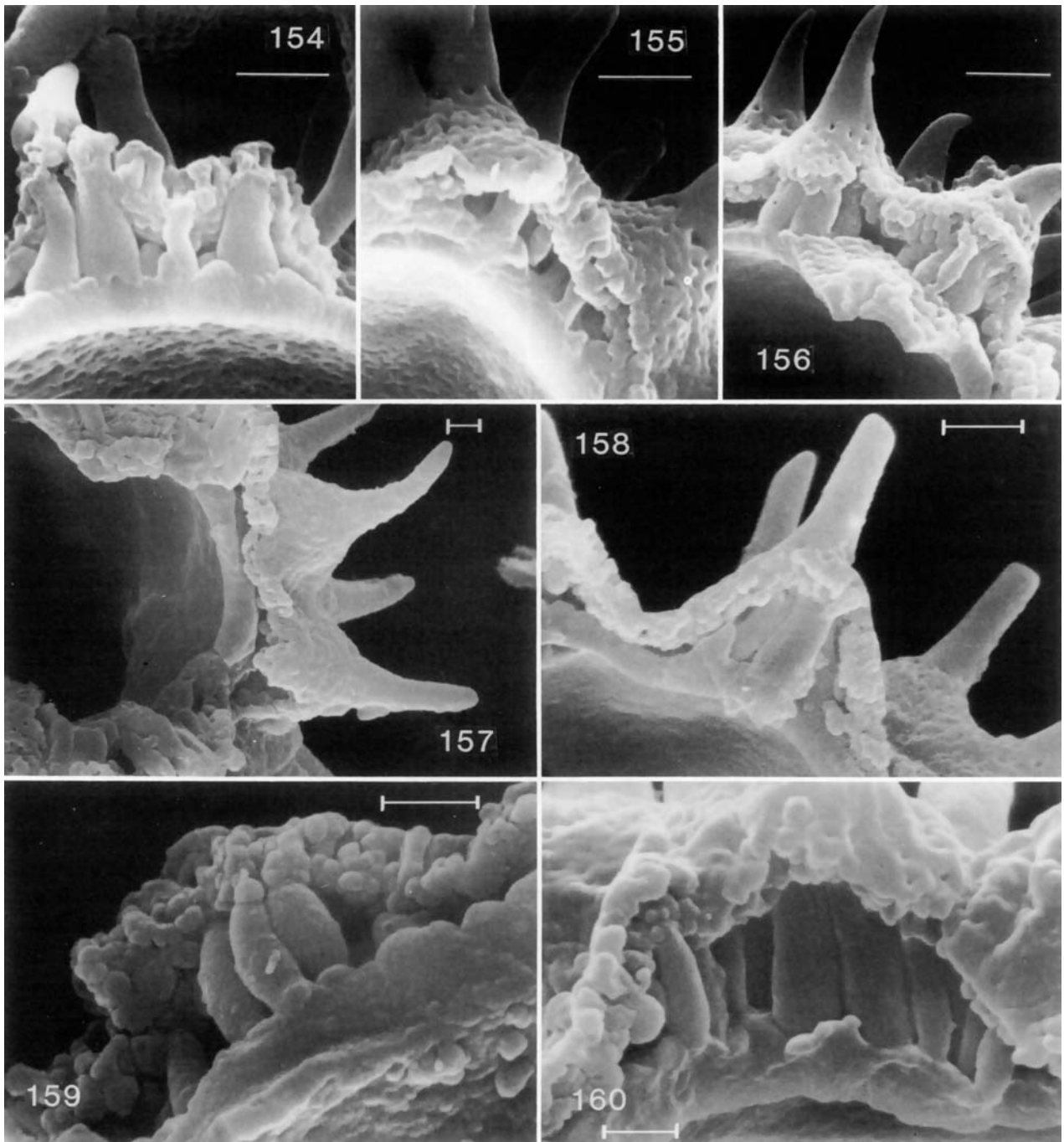
FIGURES 134–139.—SEM of tribe Liabeae, *Philoglossa peruviana* pollen: 134, near polar view; 135, colpar view; 136, colpus; 137, spines; 138, 139, broken grains. (Scale lines 134, 135 = 10 μm ; 136 = 5 μm ; 137, 138 = 2 μm ; 139 = 1 μm .)



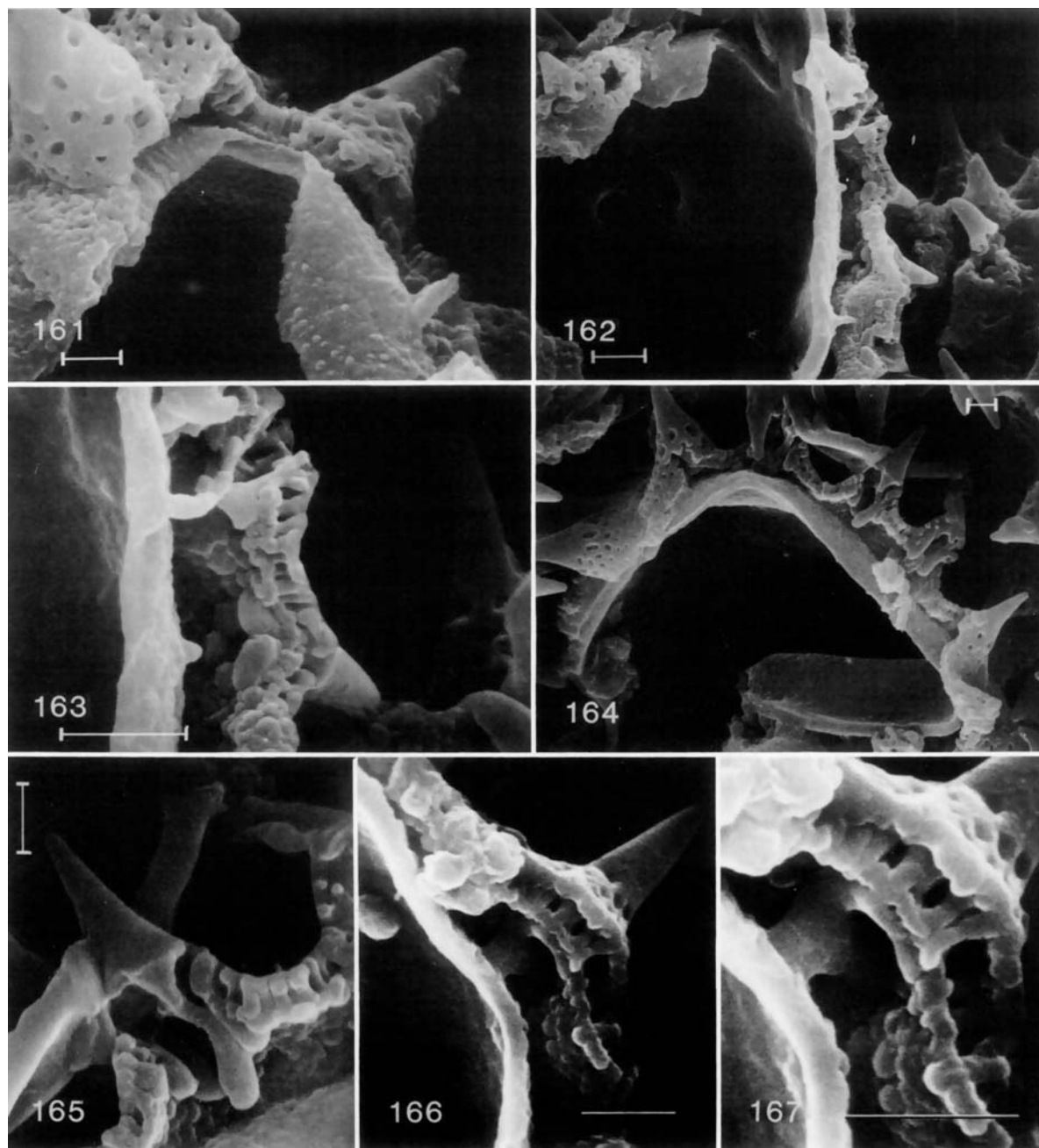
FIGURES 140–146.—SEM of tribe Liabeae, *Chrysactinium acaule* pollen: 140, colpal view; 141, polar view; 142, colpus; 143, spines; 144–146, broken grains. (Scale lines 140, 141 = 10 μm ; 142 = 5 μm ; 143–146 = 2 μm .)



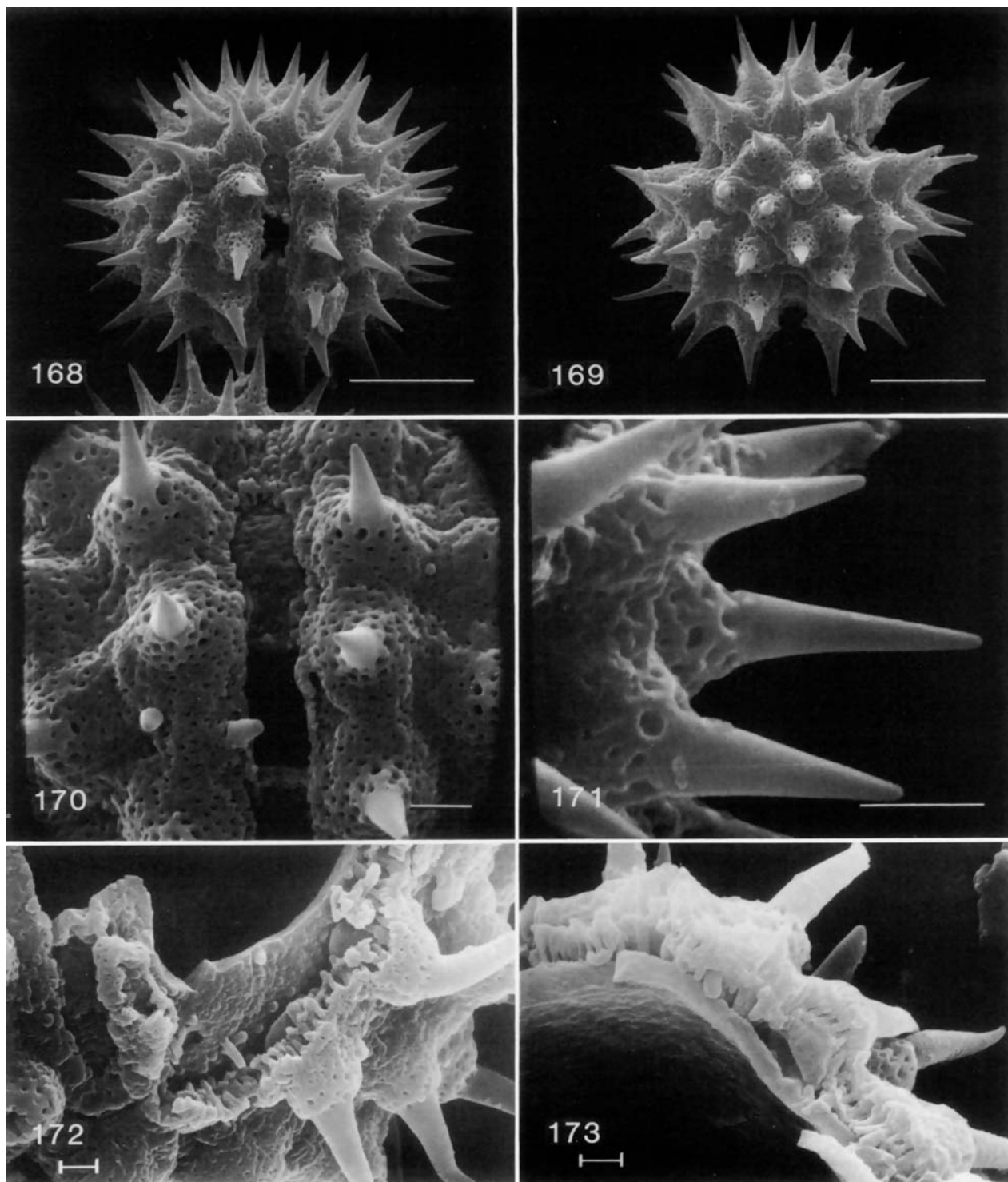
FIGURES 147-153.—SEM of tribe Liabeae, *Munnozia lanceolata* pollen: 147, colpate view; 148, polar view; 149, colpus; 150, spines; 151-153, broken grains. (Scale lines 147, 148 = 10 μm ; 149, 150 = 5 μm ; 151-153 = 2 μm .)



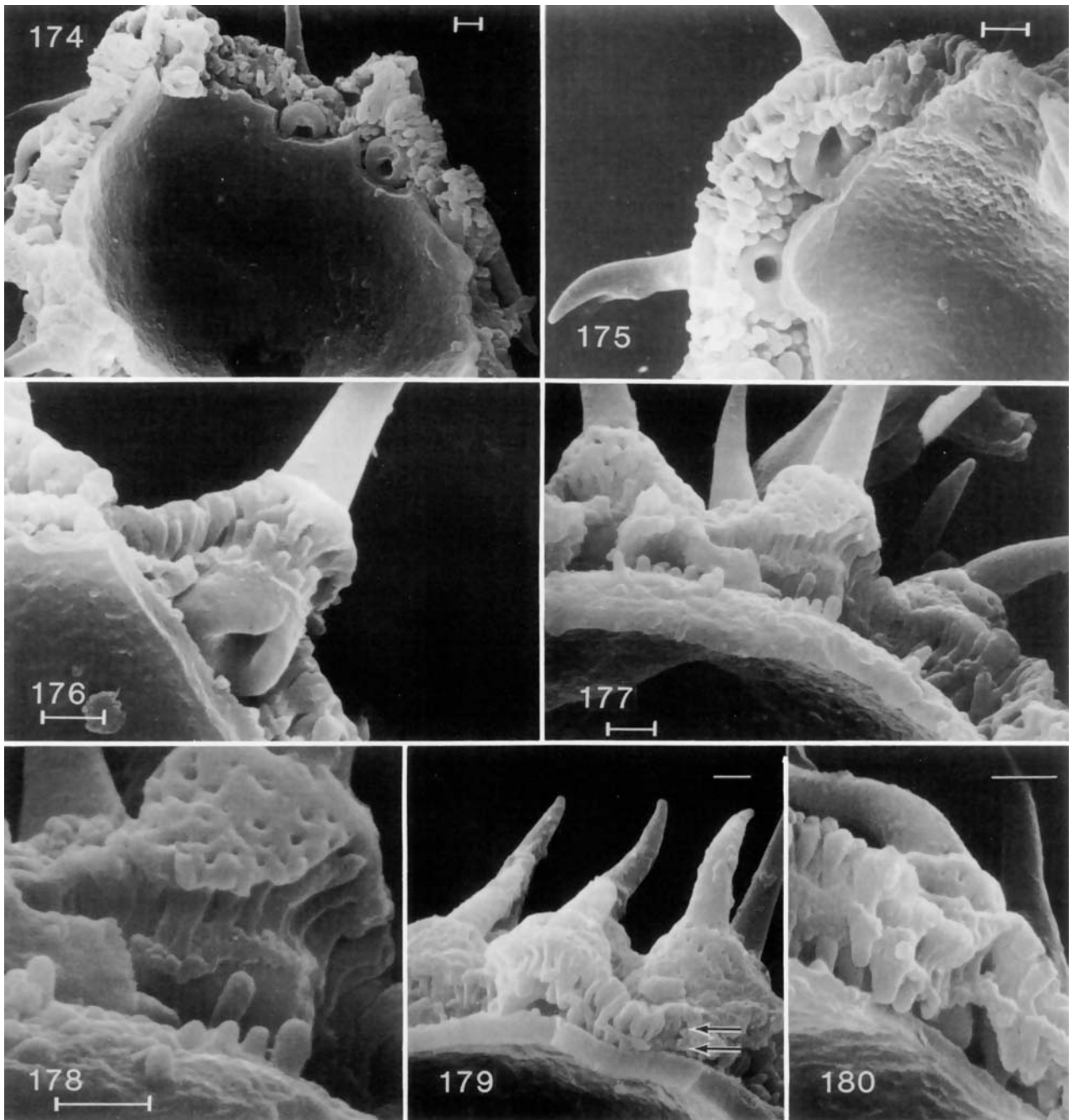
FIGURES 154–160.—SEM of tribe Liabae, *Munnozia* pollen, broken grains: 154, 155, *Munnozia lanceolata*. 156, *M. perfoliata*. 157–160, *M. jussieui*. (Scale lines 154–156, 158 = 2 μm ; 157, 159, 160 = 1 μm .)



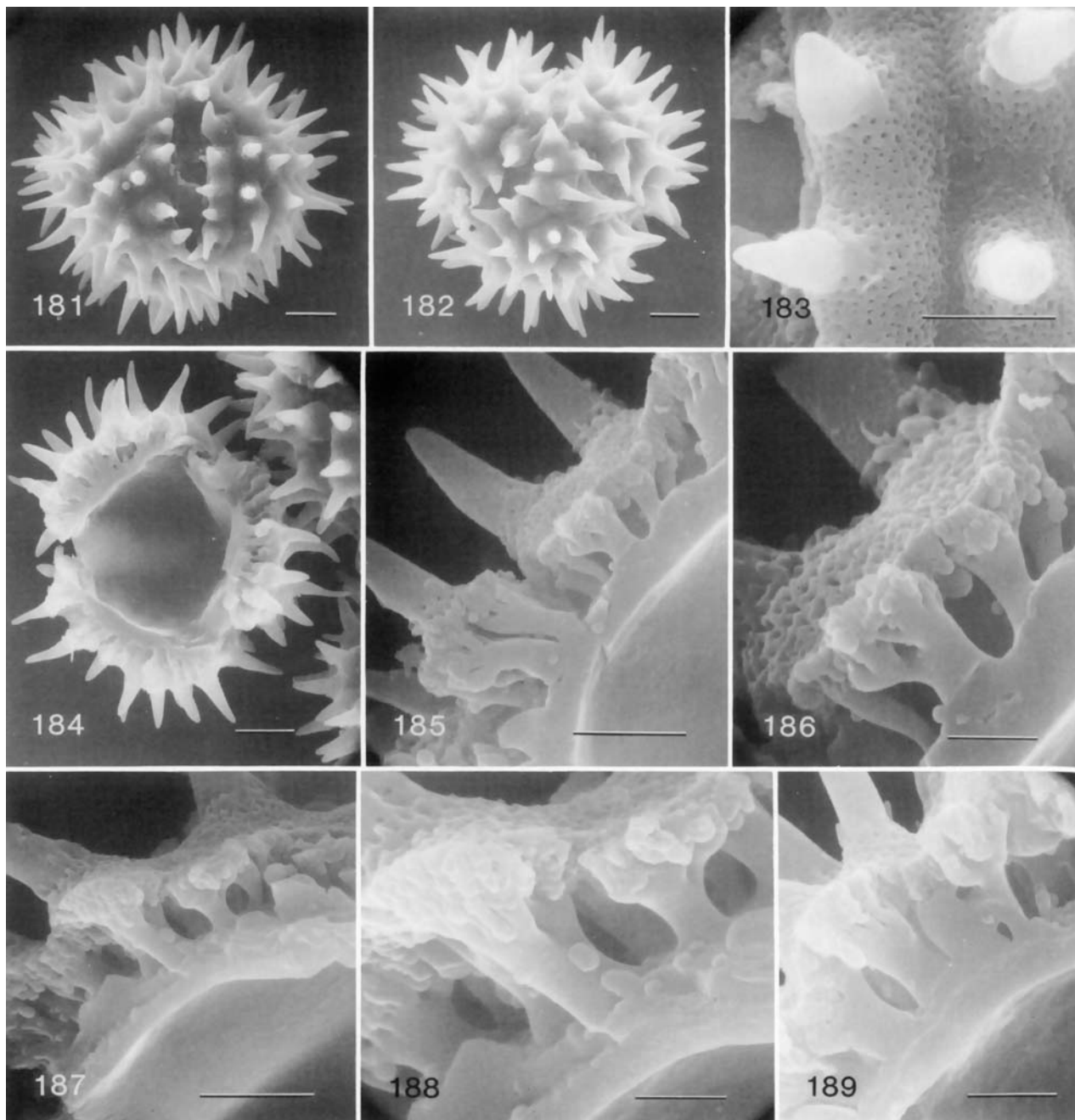
FIGURES 161–167.—SEM of tribe Liabeae, *Munnozia* pollen, broken grains: 161–165, *M. lyrata*. 166, 167, *M. senecionidis*. (Scale lines 161, 164, 165 = 1 μm ; 162, 163, 166, 167 = 2 μm .)



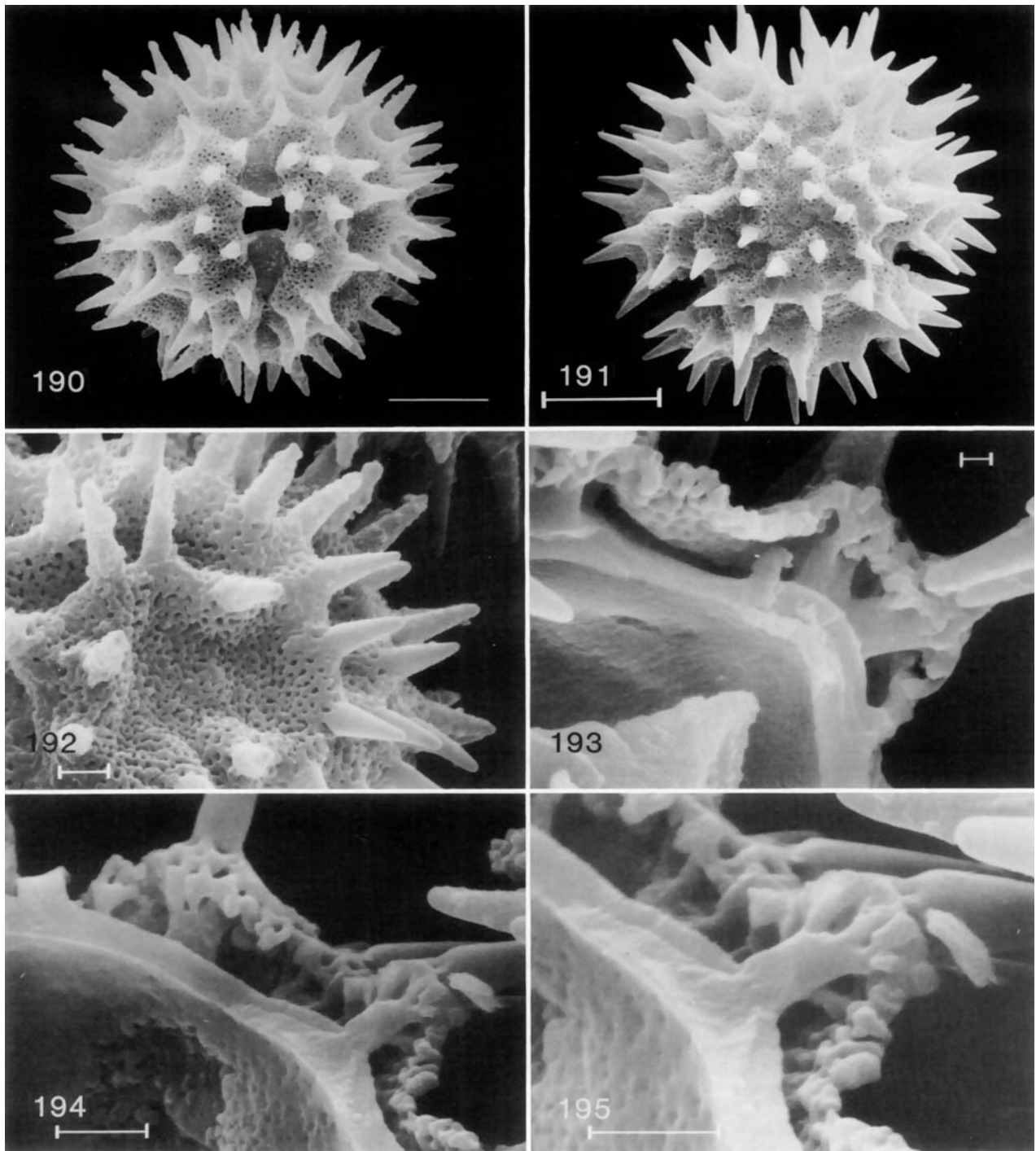
FIGURES 168–173.—SEM of tribe Liabeae, *Munnozia* pollen (subgenus *Kastnera*). *M. (Kastnera) annua*: 168, colpar view; 169, polar view; 170, colpus; 171, spines. *M. (Kastnera) tenera*: 172, 173, broken grains. (Scale lines 168, 169 = 10 μm ; 170, 171 = 2 μm ; 172, 173 = 1 μm .)



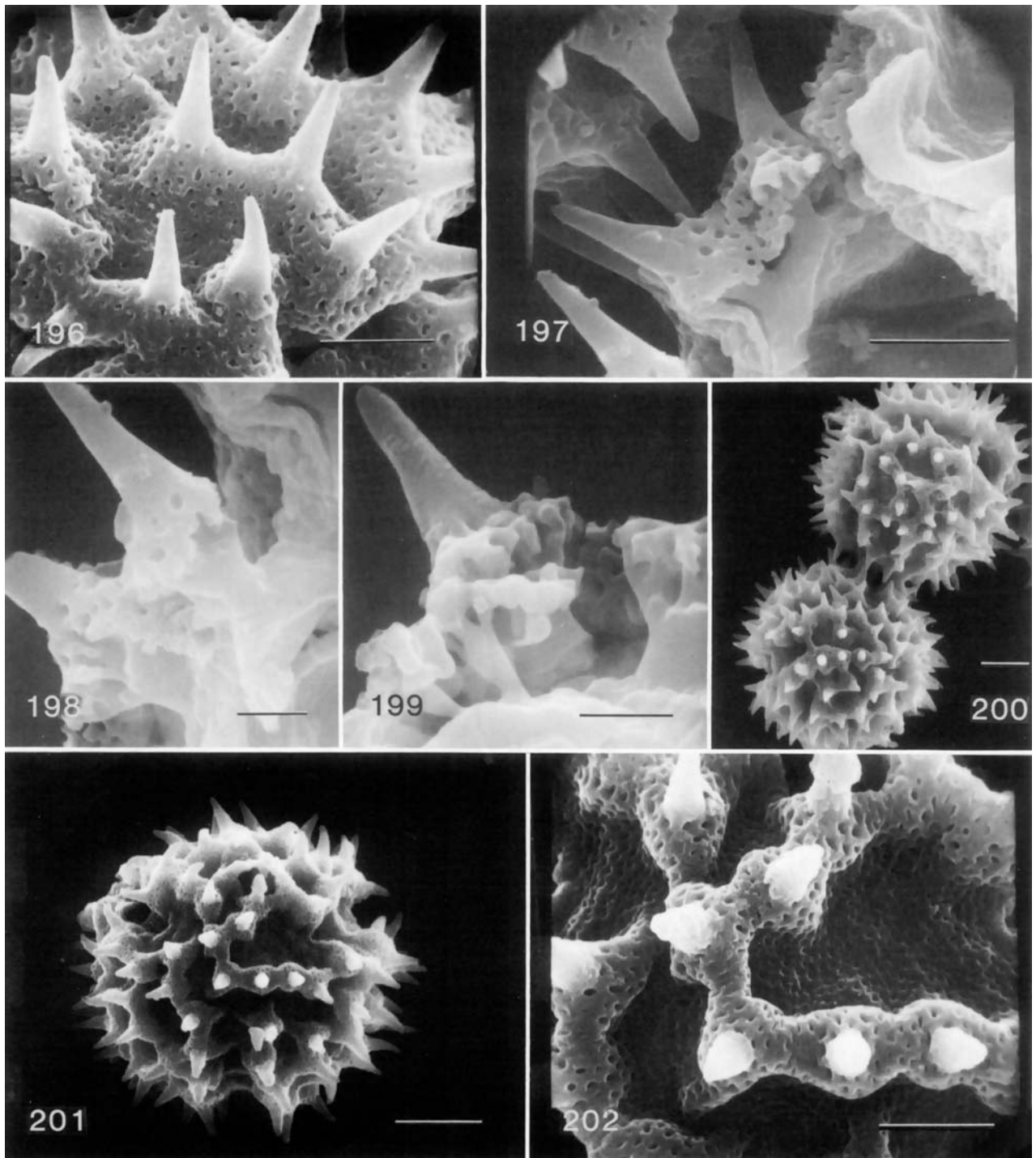
FIGURES 174-180.—SEM of tribe Liabeae, *Munnozia (Kastnera) tenera*, pollen, broken grains (179, arrows showing two layers of small columellae). (Scale lines = 1 μm .)



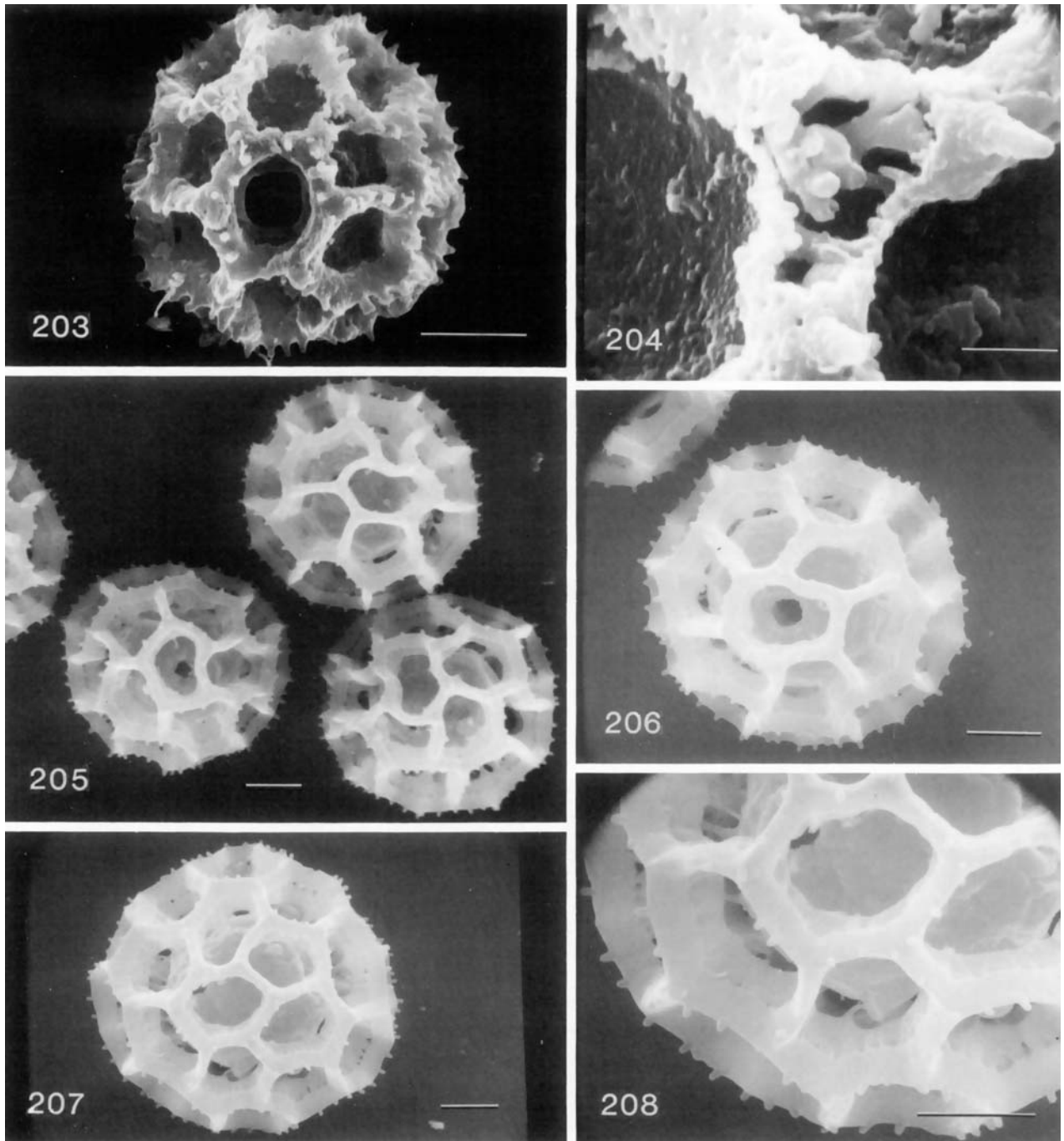
FIGURES 181–189.—SEM of tribe Vernoniae, *Pseudostiffia kingii*, pollen: 181, colpar view; 182, polar view; 183, spines; 184–189, broken grains. (Scale lines 181, 182, 184 = 10 μm ; 183, 185, 187 = 5 μm ; 186, 188, 189 = 2 μm .)



FIGURES 190–195.—SEM of tribe Vernonieae, *Vernonia fuertesii* pollen: 190, colpar view; 191, polar view; 192, spines; 193–195, broken grains. (Scale lines 190, 191 = 10 μm ; 192, 194, 195 = 2 μm ; 193 = 0.5 μm .)



FIGURES 196-202.—SEM of tribe Vernoniaceae, *Blanchetia* and *Bishopalea* pollen. *Blanchetia heterotricha*: 196, surface with spines; 197-199, broken grains. *Bishopalea erecta*: 200, whole grains; 201, polar view; 202, surface. (Scale lines 196, 197, 202 = 5 μm ; 198, 199 = 2 μm ; 200, 201 = 10 μm .)



FIGURES 203–208.—SEM of tribe Vernonieae, *Heterocypsel*a and *Phyllocephalum* pollen. *Heterocypsel*a *andersonii*: 203, equatorial view; 204, broken tectum. *Phyllocephalum* *scabridum*: 205–207, grains; 208, reticulum, showing two strata. (Scale lines 203, 205–208 = 10 μ m; 204 = 2 μ m.)