

PLATE 35

Scoloplos mazatlanensis, new species

- a. Parapodium 8, anterior view, 112x
- b. Abdominal parapodium, anterior view, 112x
- c. Ventralmost seta, setiger 8, 420x

Aedicira alisetosa, new species

- d. Anterior end, dorsal view, 25x
- e. Ventralmost seta, setiger 11, 420x
- f. Parapodium 12, anterior view, 212.5x

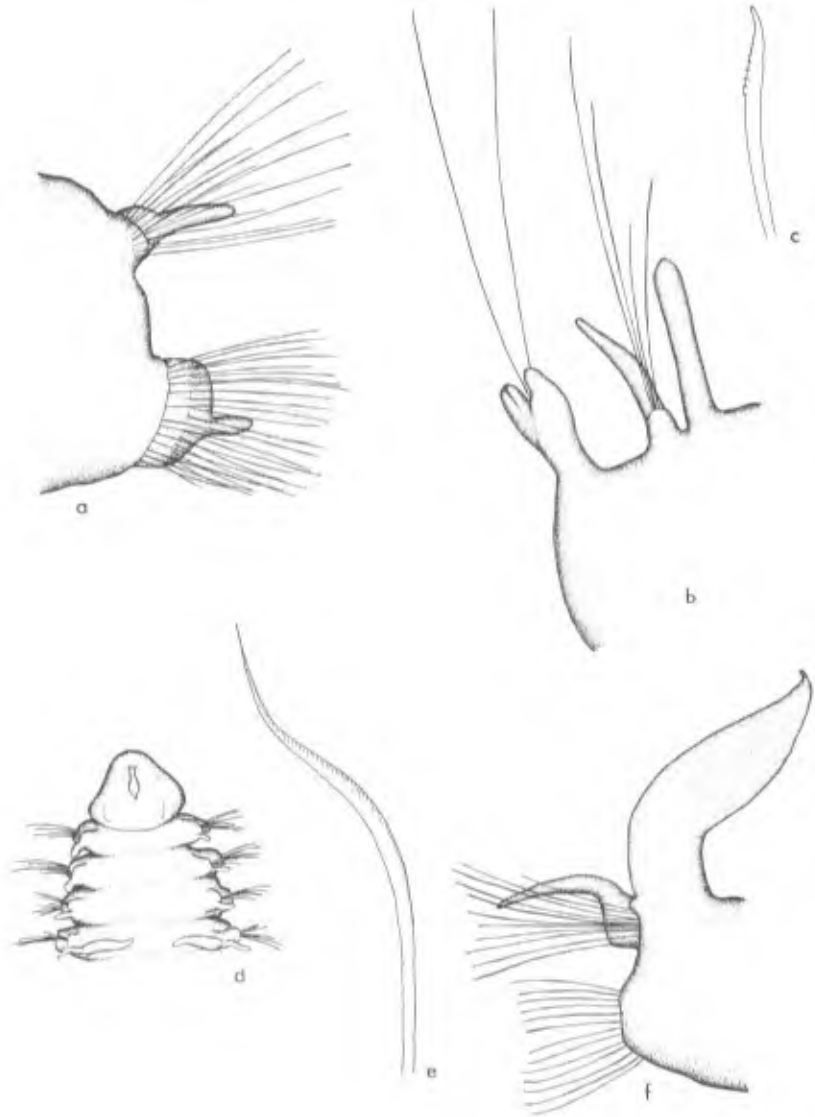


PLATE 36

Aedicula longicirrata, new species

- a. Anterior end, dorsal view, 25x

Aricidea similis, new species

- b. Parapodium 12, posterior view, 212.5x
c. Neuroseta, frontal view, posterior setiger, 1350x
d. Neuroseta, lateral view, posterior setiger, 1350x
e. Anterior end, dorsal view, 50x

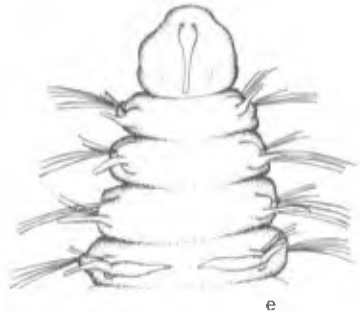
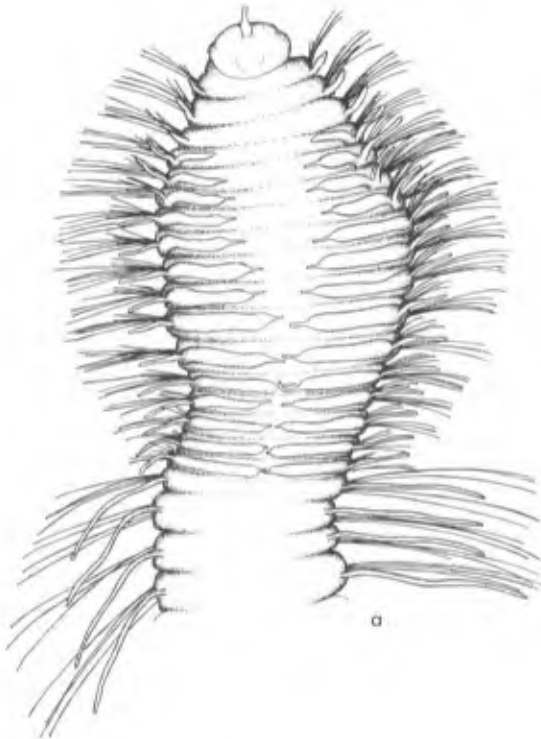


PLATE 37

Paraonis pycnbranchiata, new species

- a. Anterior end, dorsal view, 25x
- b. Posterior parapodium, posterior view, 187.5x
- c. Median branchial parapodium, anterior view, 212.5x
- d. Ventralmost seta, posterior parapodium, 1350x
- e. Median seta, posterior parapodium, 1350x

Aricidea crassicapitis, new species

- f. Neuroseta, posterior parapodium, 570x
- g. Anterior end, dorsal view, 25x

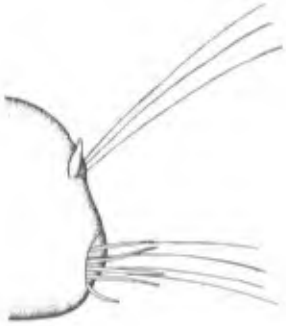
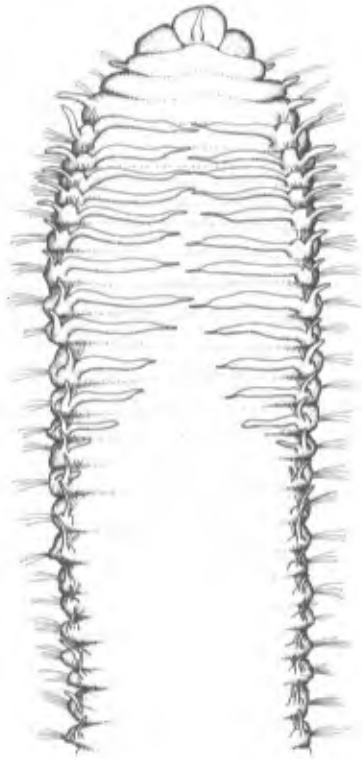
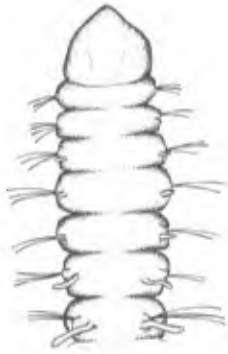


PLATE 38

Prionospio (*Apoprionospio*) *vermillionensis*, new species

- a. Anterior end, dorsal view, 25x
- b. Parapodium 3, anterior view, 25x
- c. Parapodium 17, anterior view, 25x
- d. Parapodium 5, anterior view, 25x

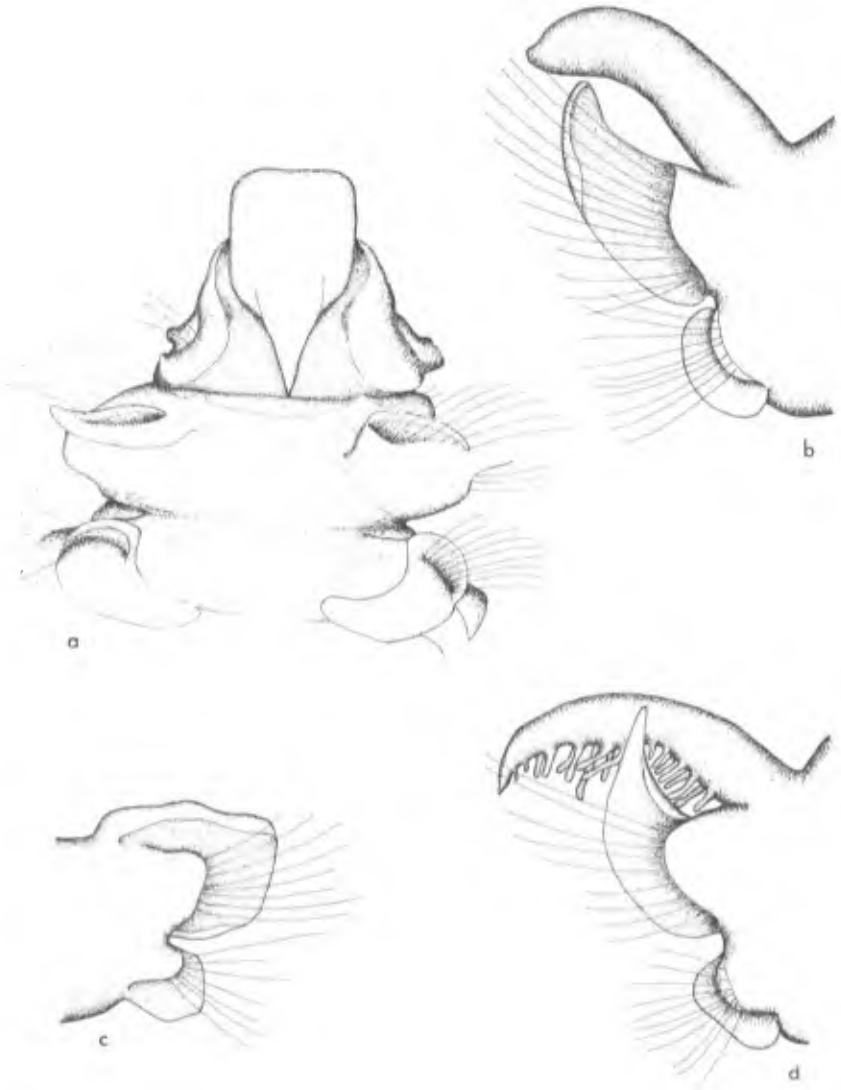


PLATE 39

Prionospio (*Prionospio*) *anuncata*, new species

- a. Anterior end, lateral view, 10x
- b. Second parapodium, anterior view, 25x
- c. Hooded hook, 96th setiger, 385x
- d. Fourth parapodium, anterior view, 25x
- e. Fifth parapodium, anterior view, 25x

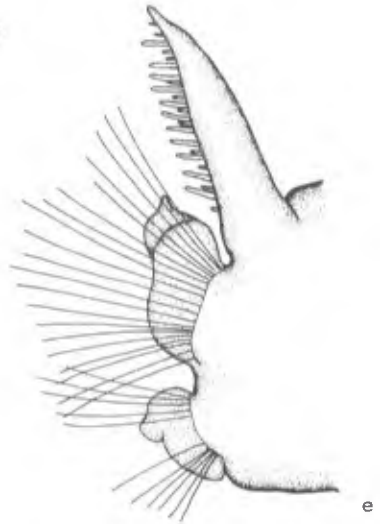
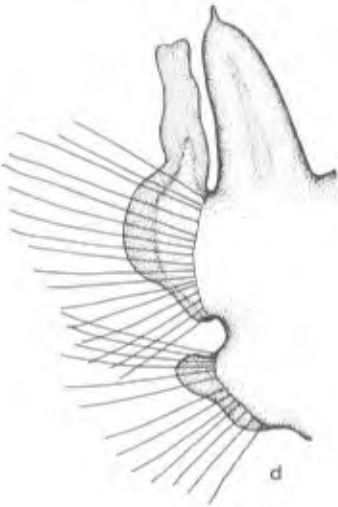
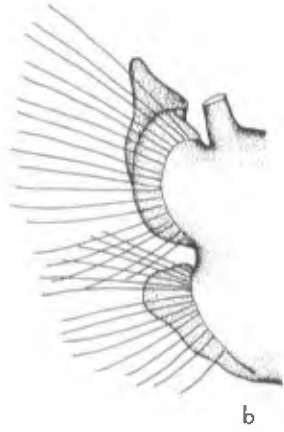
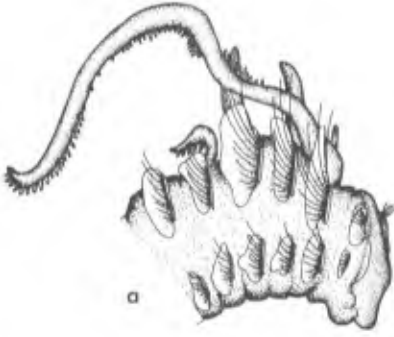


PLATE 40

Prionospio (Prionospio) lobulata, new species

- a. Anterior end, dorsal view, 70x
- b. Hooded hook, median setiger, 625x
- c. Anterior end, lateral view, 60x

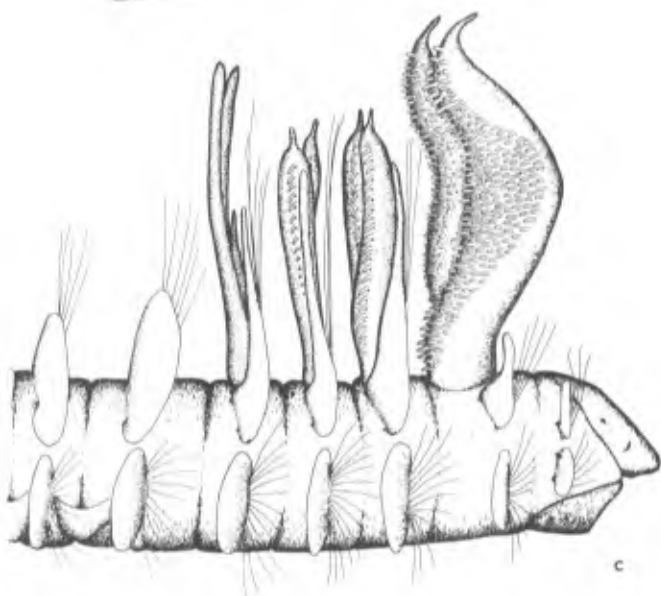
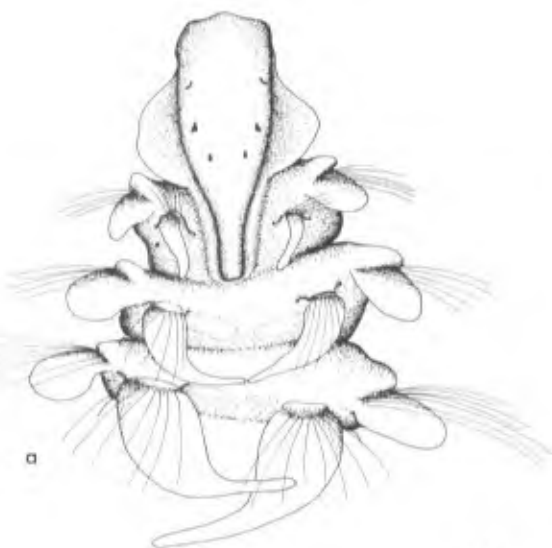


PLATE 41

Cossura brunnea, new species

- a. Inferior seta, setiger 2, 385x
- b. Superior seta, setiger 2, 385x
- c. Inferior notoseta, median setiger, 950x
- d. Superior notoseta, median setiger, 950x
- e. Anterior end, dorsal view, 25x

Cossura rostrata, new species

- f. Anterior end, dorsal view, 25x
- g. Slender seta, 950x
- h. Coarse seta, 950x

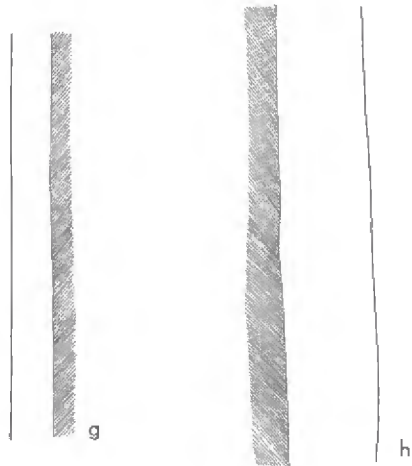
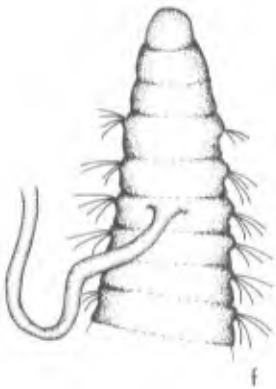
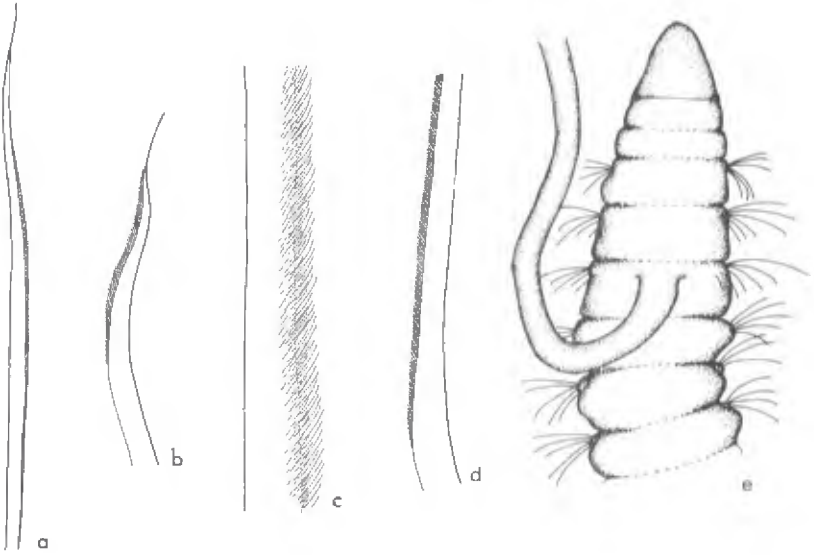


PLATE 42

Cossura rostrata, new species

- a. Parapodium 25, anterior view, 95x

Cossura sima, new species

- b. Setal type 1, 950x
c. Parapodium 10, anterior view, 95x
d. Setal type 2, 950x

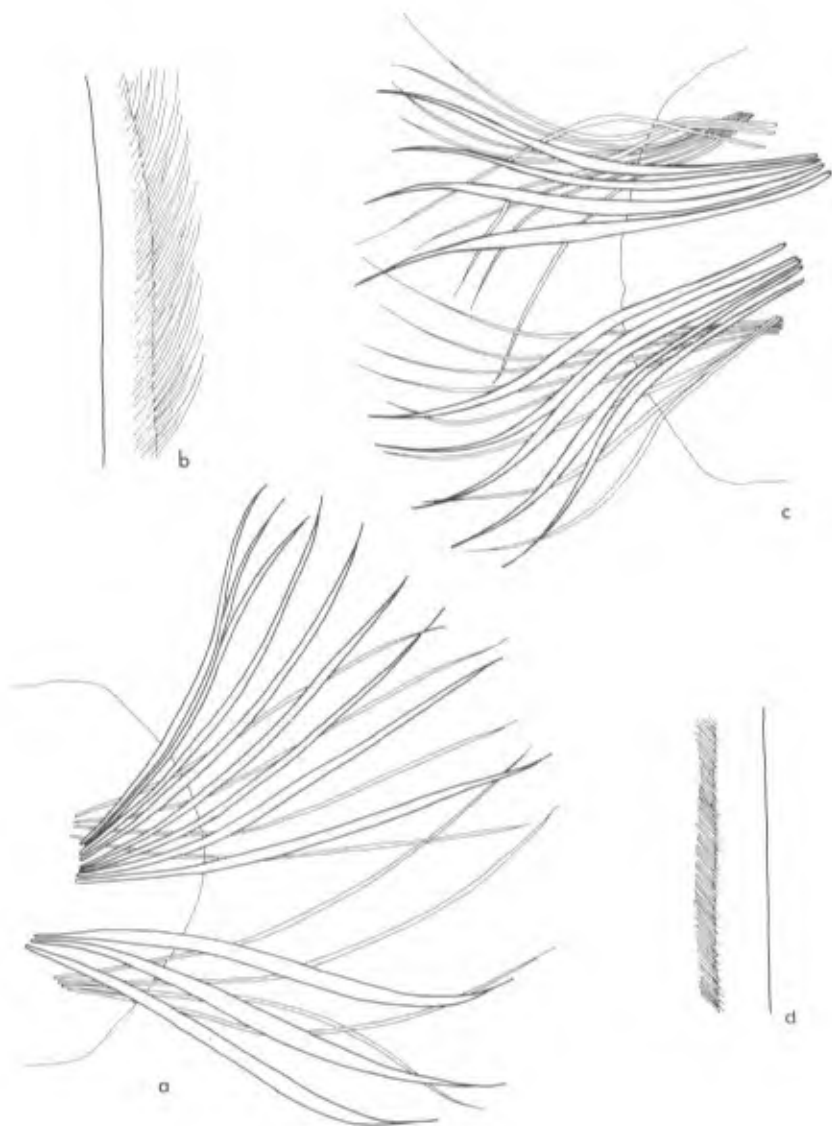


PLATE 43

Cossura sima, new species

- a. Anterior end, dorsal view, 25x
- b. Junction between thorax and abdomen, 25x
- c. Posterior parapodium, anterior view, 385x
- d. Setal type 3, 950x

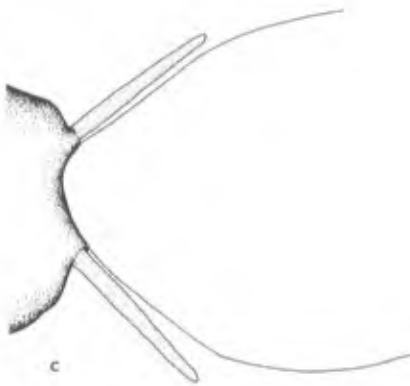
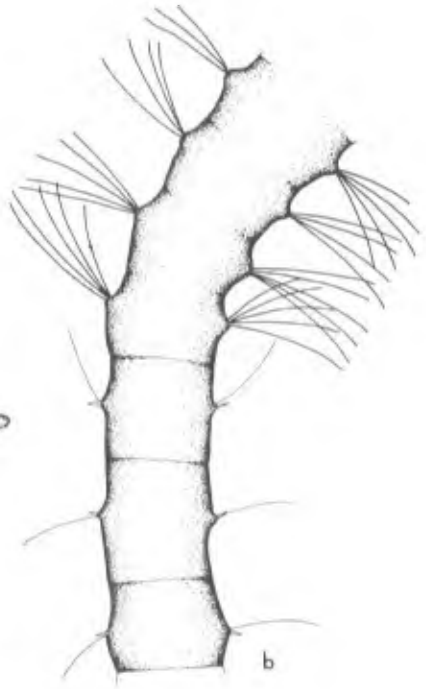
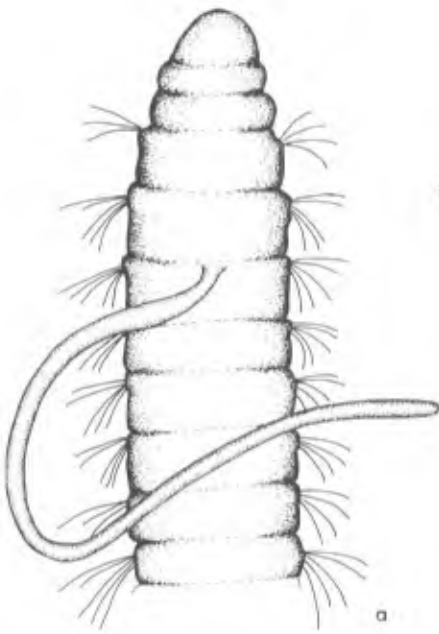


PLATE 44

Diplocirrus micans, new species

- a. Holotype, dorsal view, 10x
- b. Notoseta, median setiger, 385x
- c. Neuroseta, median setiger, 385x
- d. Dorsal papilla, 160x
- e. Anterior parapodial papillae, 160x

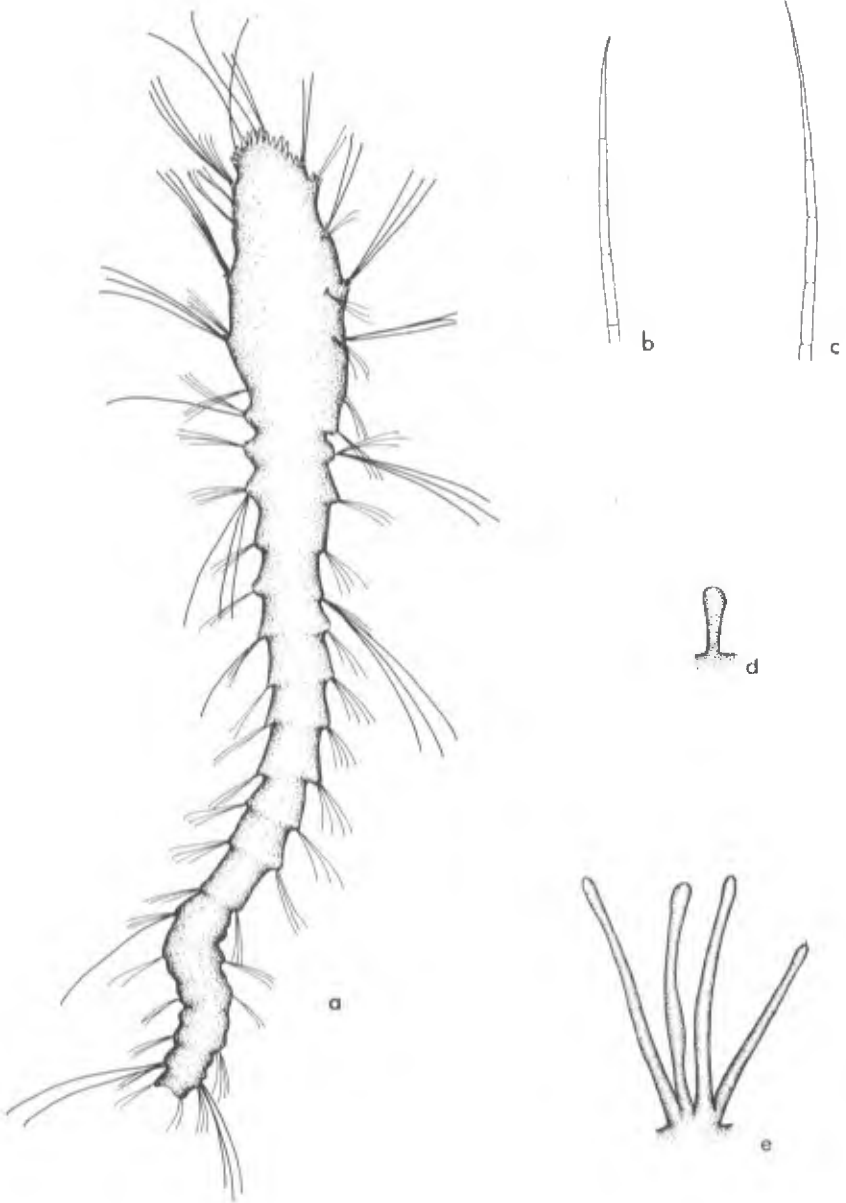


PLATE 45

Fauveliopsis rugosa, new species

- a. Holotype, dorsal view, 17.5x
- b. Anterior end, ventral view, 50x
- c. Interramal papilla, median parapodium, 385x
- d. Anterior end, frontal view, 50x
- e. Median parapodium, 385x

Flabelligella mexicana, new species

- f. Dorsal papilla, 385x
- g. Holotype, lateral view, 50x

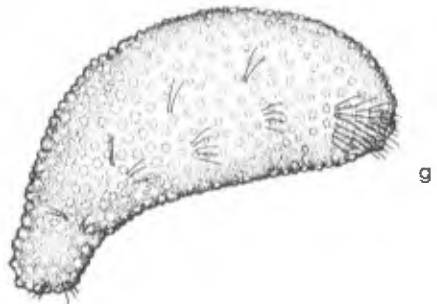
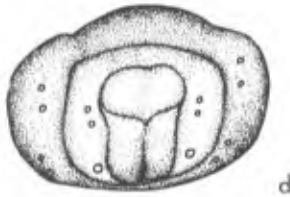
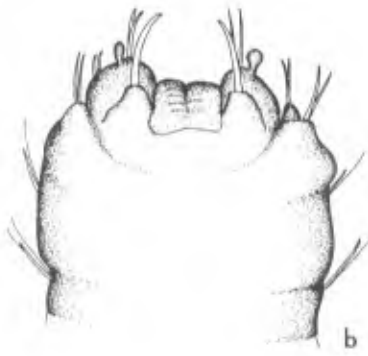
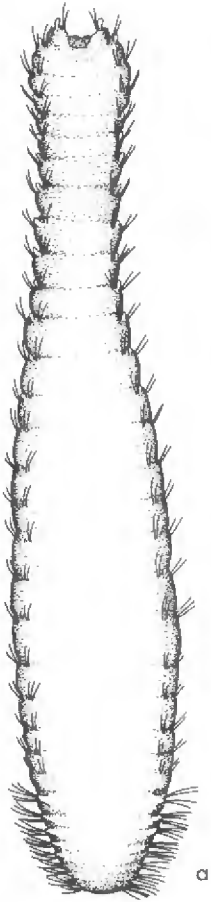


PLATE 46

Flabelliderma macrochaeta, new species

a. Neuropodial hook, 600x

b. Anterior end, ventral view, 40x

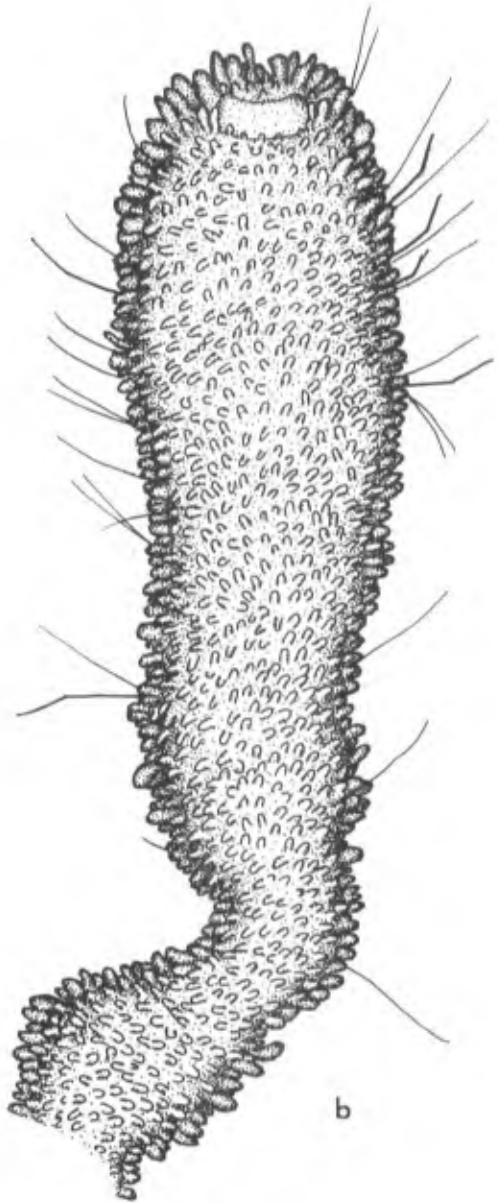
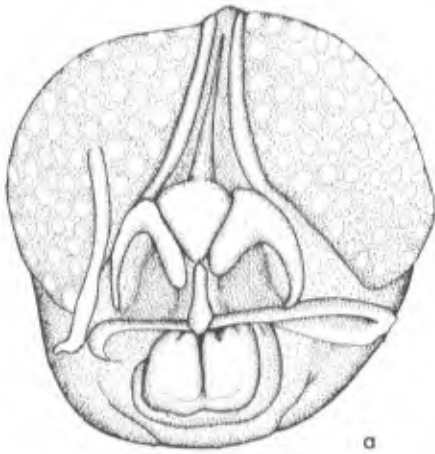


PLATE 47

Pherusa abyssalis, new species

- a. Anterior end, frontal view, 25x
- b. Distal end of notoseta, median parapodium, 160x
- c. Neuroseta, median parapodium, 160x
- d. Median parapodium, posterior view, 50x
- e. Proximal portion of notoseta, median parapodium, 160x



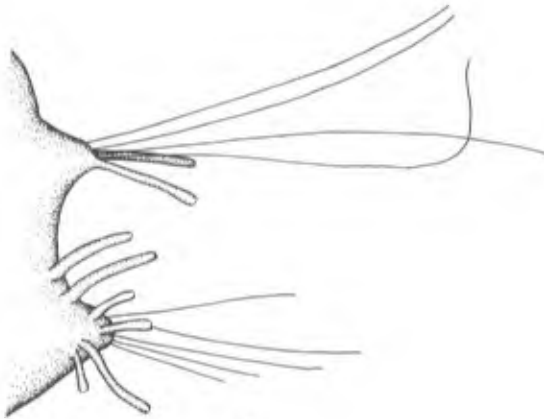
a



b



c



d



e

PLATE 48

Piromis hospitis, new species

- a. Anterior end, dorsal view, 5x
- b. Neuropodial hook, setiger 10, 160x
- c. Ventralmost neuropodial hook, posterior setiger, 160x
- d. Dorsalmost neuropodial hook, posterior setiger, 160x
- e. Median neuropodium, posterior view, 25x

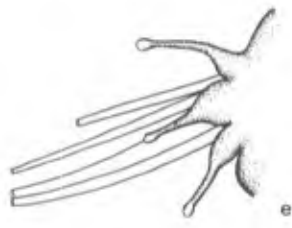
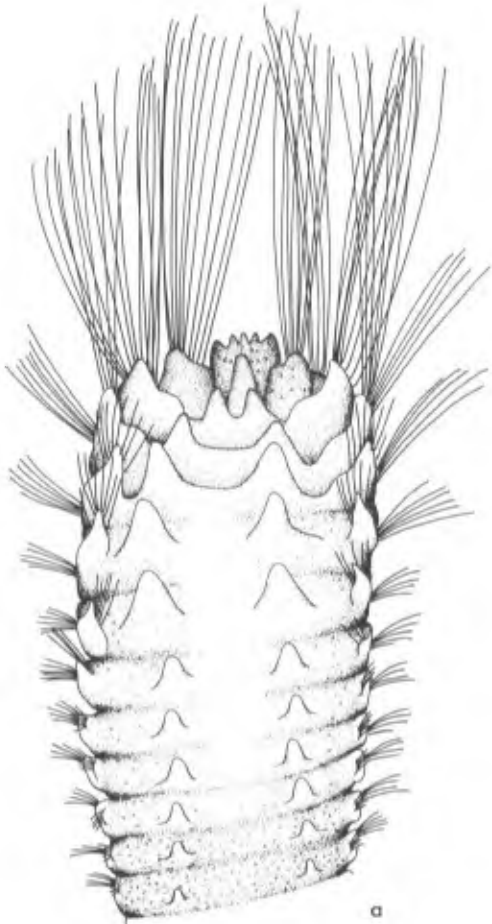


PLATE 49

Therochaeta pacifica, new species

- a. Anterior end, frontal view, 100x
- b. Anterior end, dorsal view, 50x
- c. Neuroseta, parapodium 6, 385x

Travisa foetida Hartman, 1969

- d. Anterior end, dorsal view, 10x

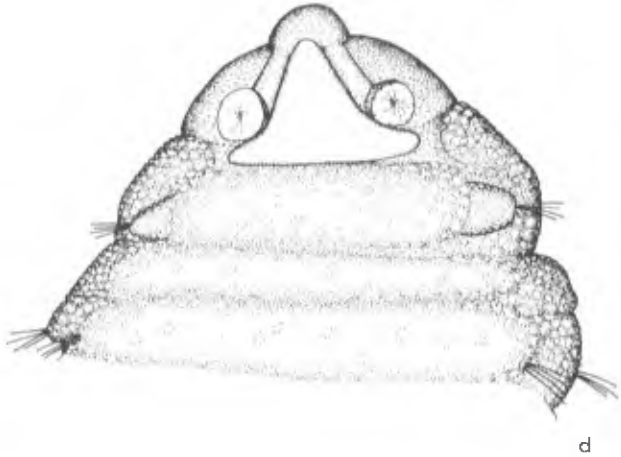
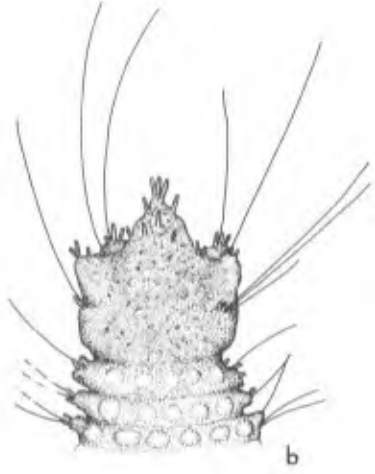
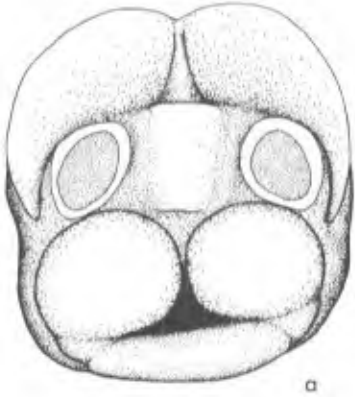


PLATE 50

Neomotomastus glabrus, new genus, new species

- a. Anterior end, lateral view, 25x
- b. Long-handled uncinus, abdominal setiger, frontal view, 1350x
- c. Long-handled uncinus, abdominal setiger, lateral view, 1350x

Notomastus cinctus, new species

- d. Long-handled uncinus, abdominal setiger, frontal view, 1350x
- e. Long-handled uncinus, abdominal setiger, lateral view, 1350x
- f. Two abdominal setigers, lateral view, 5x
- g. Cross-section, abdomen, approx. 2.5x
- h. Anterior end, lateral view, 3x

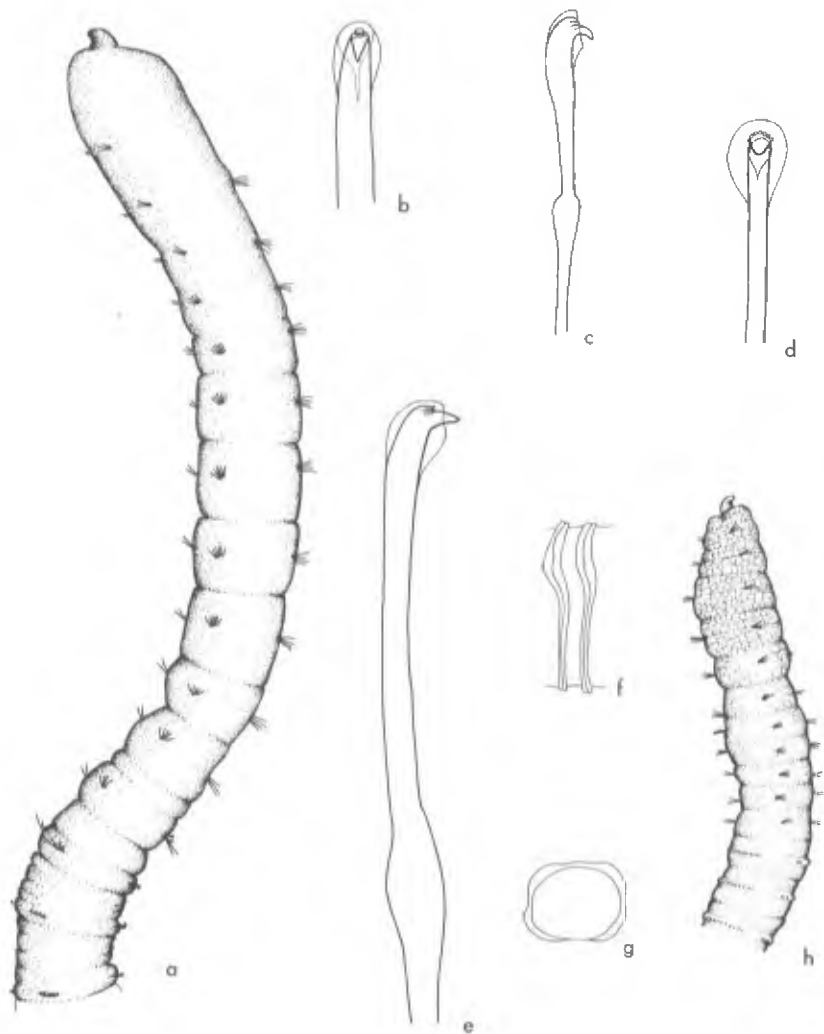


PLATE 51

Notodasus magnus, new genus, new species

- a. Anterior end, lateral view, 3x
- b. Uncinus, lateral view, 1800x
- c. Uncinus, frontal view, 1800x

Notomastus abyssalis, new species

- d. Cross-section, abdomen, approx. 7x
- e. Uncinus, frontal view, 1800x
- f. Uncinus, lateral view, 1800x
- g. Anterior end, dorsal view, 4.5x

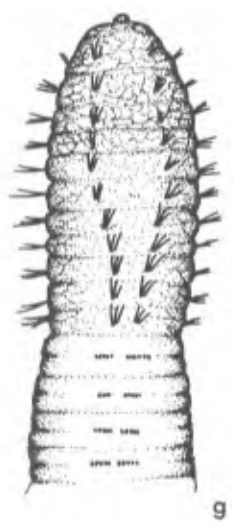


PLATE 52

Asychis lobata, new species

- a. Anterior end, lateral view, 10x
- b. Portion of notoseta, 1350x
- c. Anterior end, dorsal view, 10x
- d. Posterior end, lateral view, 10x
- e. Uncinus, lateral view, 385x
- f. Posterior end, ventral view, 10x

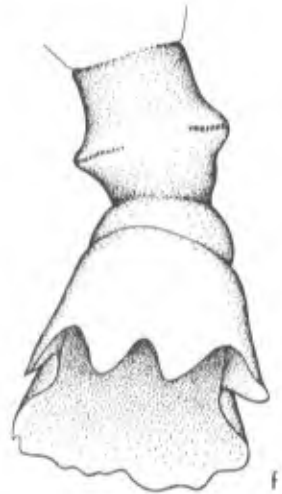
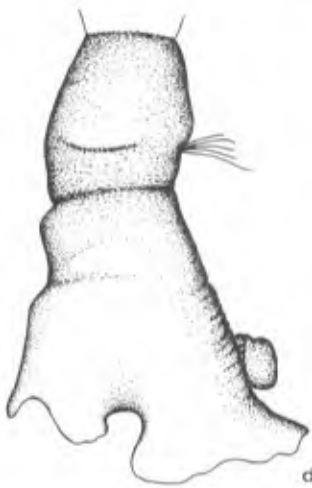
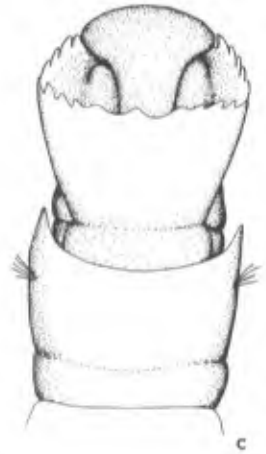
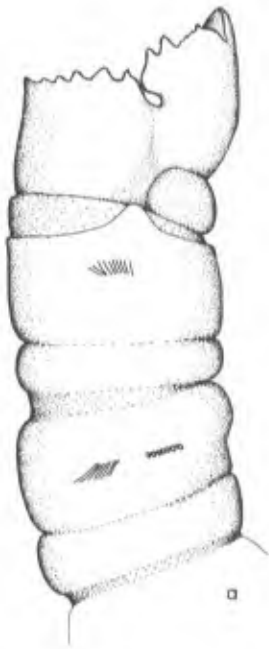


PLATE 53

Clymaldane laevis, new species

- a. Anterior end, dorsal view, 15x
- b. Uncinus, posteriormost setiger, 250x
- c. Uncinus, setiger 5, 250x
- d. Posterior end, lateral view, 15x

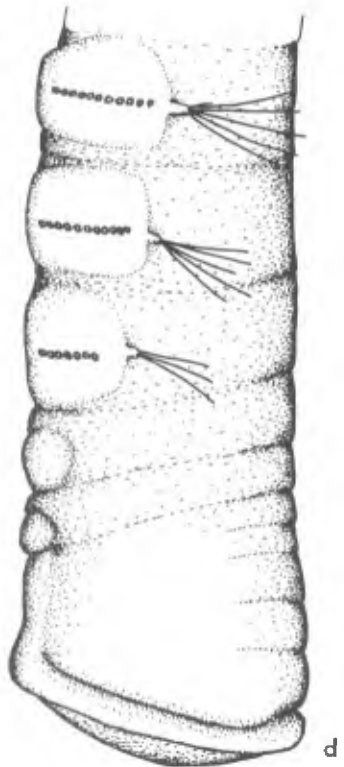
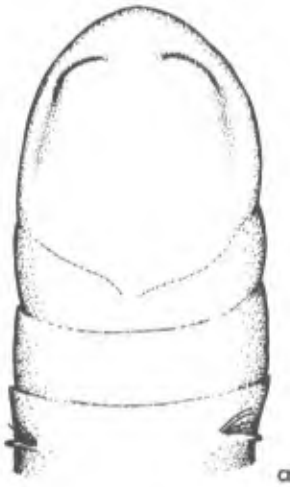


PLATE 54

Euclymene reticulata Moore, 1923

- a. Anterior end, frontal view, 15x
- b. Posterior end, terminal view, 15x

Maldane monilata, new species

- c. Anterior end, lateral view, 15x
- d. Anterior end, dorsal view, 15x
- e. Posterior end, terminal view, 15x
- f. Uncinus, 250x
- g. Posterior end, lateral view, 15x

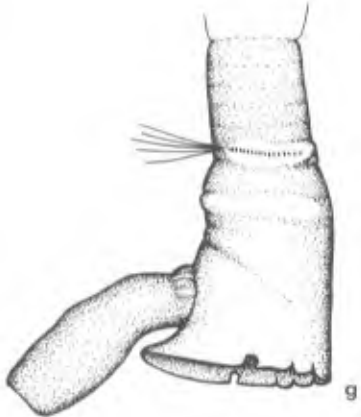
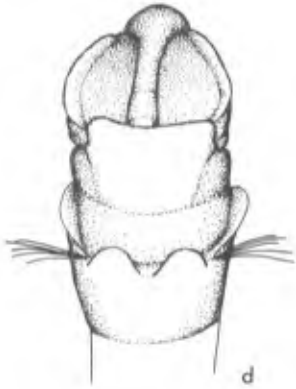
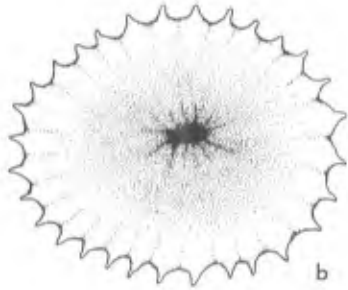
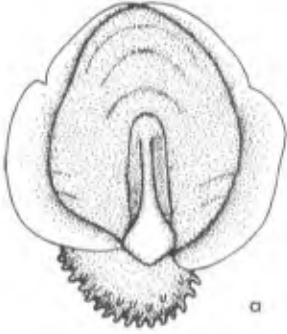


PLATE 55

Idanthyrus armatopsis, new species

- a. Anterior end, ventral view, setae omitted, 25x
- b. Outer paleal spine, 58x
- c. Tip of outer paleal spine, 285x
- d. Inner paleal spine, 58x
- e. Portion of inner paleal spine, 570x
- f. Anterior end, dorsal view, 10x
- g. Parathoracic palea with companion seta, 285x

Idanthyrus armatus Kinberg, 1867

- h. Parathoracic palea with companion seta, 130x
- i. Outer paleal spine, 58x
- j. Tip of outer paleal spine, 285x

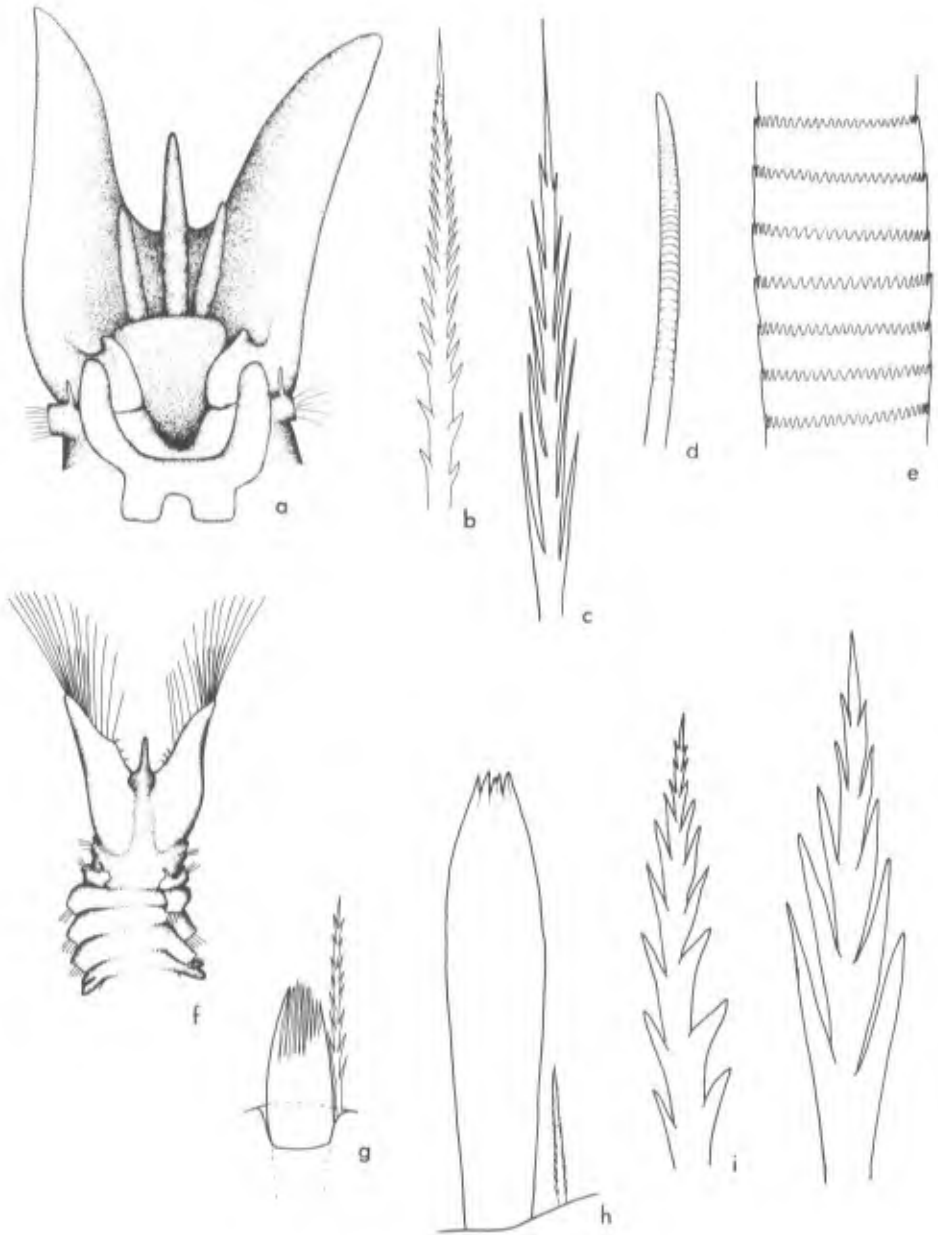


PLATE 56

Amage delus (Chamberlin, 1919)

- a. Anterior end, dorsal view, 10x
- b. Thoracic uncinus, 950x
- c. Abdominal uncinus, 950x

Amage scutata (Moore, 1909)

- d. Anterior end, dorsal view, 10x

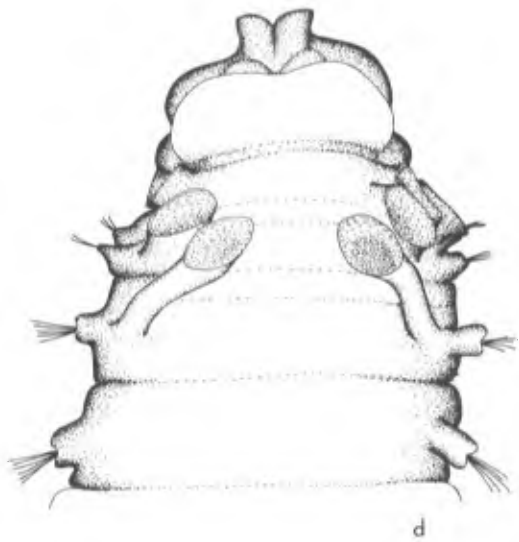
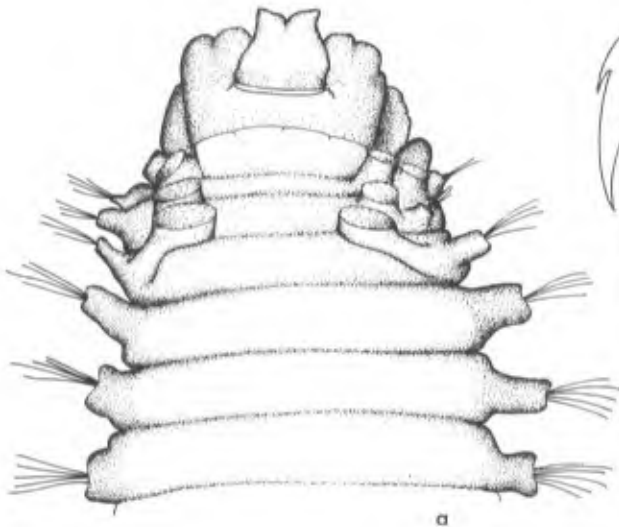


PLATE 57

Ampharete ?arctica Malmgren, 1866

a. Anterior end, dorsal view, 25x

Amphicteis orphnius Chamberlin, 1919

b. Anterior end, dorsal view, holotype, 10x

Amphicteis uncopalea Chamberlin, 1919

c. Anterior end, dorsal view, 10x

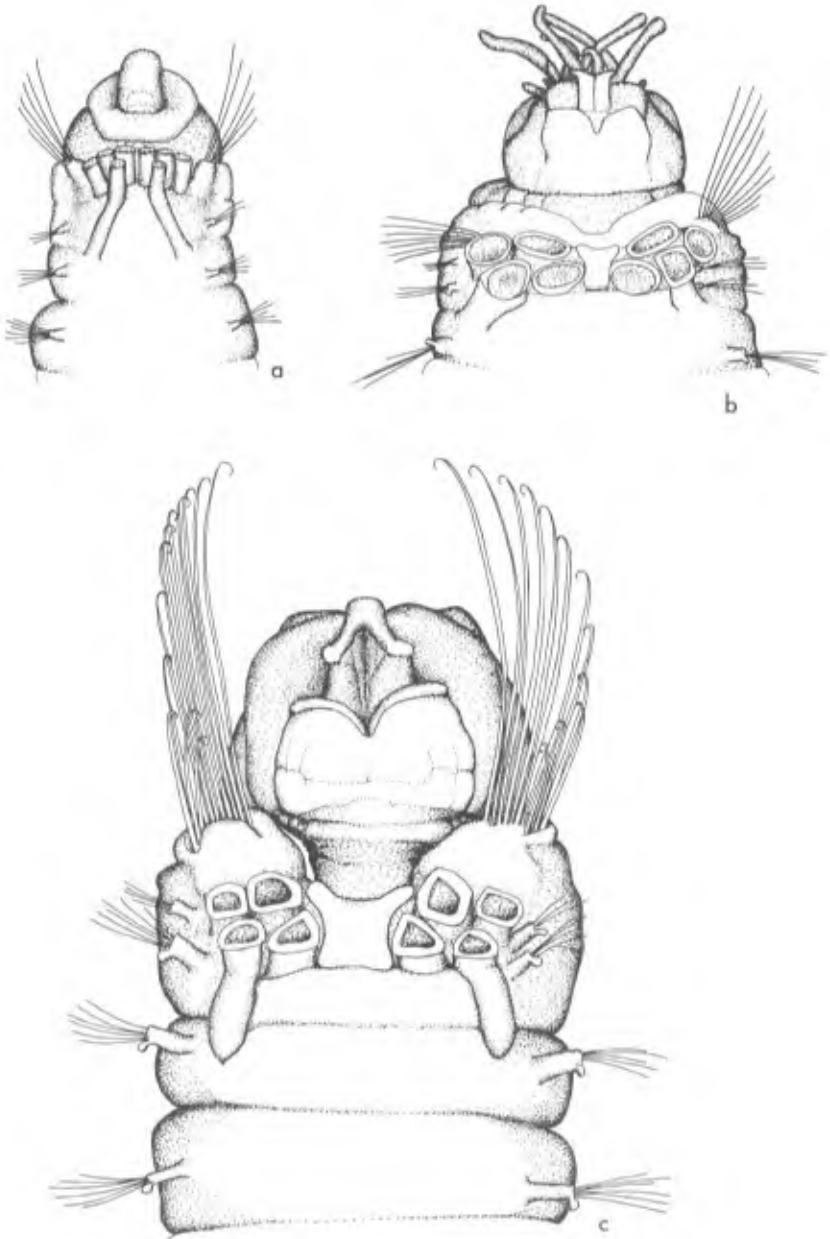


PLATE 58

Amphicteis mucronata Moore, 1923

a. Anterior end, dorsal view, 10x

Amphicteis obscurior Chamberlin, 1919

b. Anterior end, dorsal view, holotype, 10x

Amphicteis scaphobranchiata Moore, 1906

c. Anterior end, dorsal view, 25x

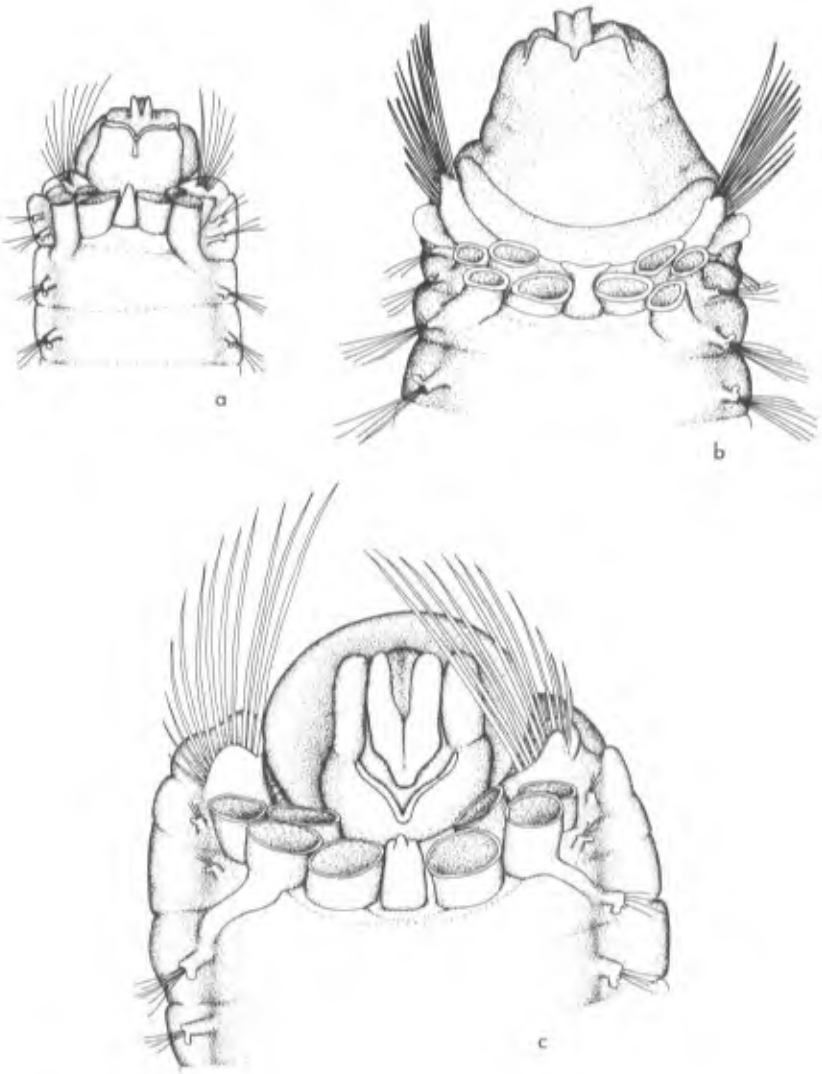


PLATE 59

Anobothrus bimaculatus, new species

- a. Notoseta from modified setiger, 385x
- b. Thoracal uncinus, 950x
- c. Anterior end, dorsal view, 25x
- d. Anterior end, dorsal view, with insertion of branchiae, 10x
- e. Abdominal uncinus, lateral view, 950x
- f. Abdominal uncinus, frontal view, 950x

Anobothrus mancus, new species

- g. Notoseta from modified setiger, 950x
- h. Thoracal uncinus, 950x
- i. Anterior end, dorsal view, 15x



PLATE 60

Ecamphicteis elongata, new genus, new species

- a. Abdominal uncinus, frontal view, 1350x
- b. Anterior end, dorsal view, 25x
- c. Anterior end, ventral view, 25x
- d. Thoracal uncinus, lateral view, 1350x

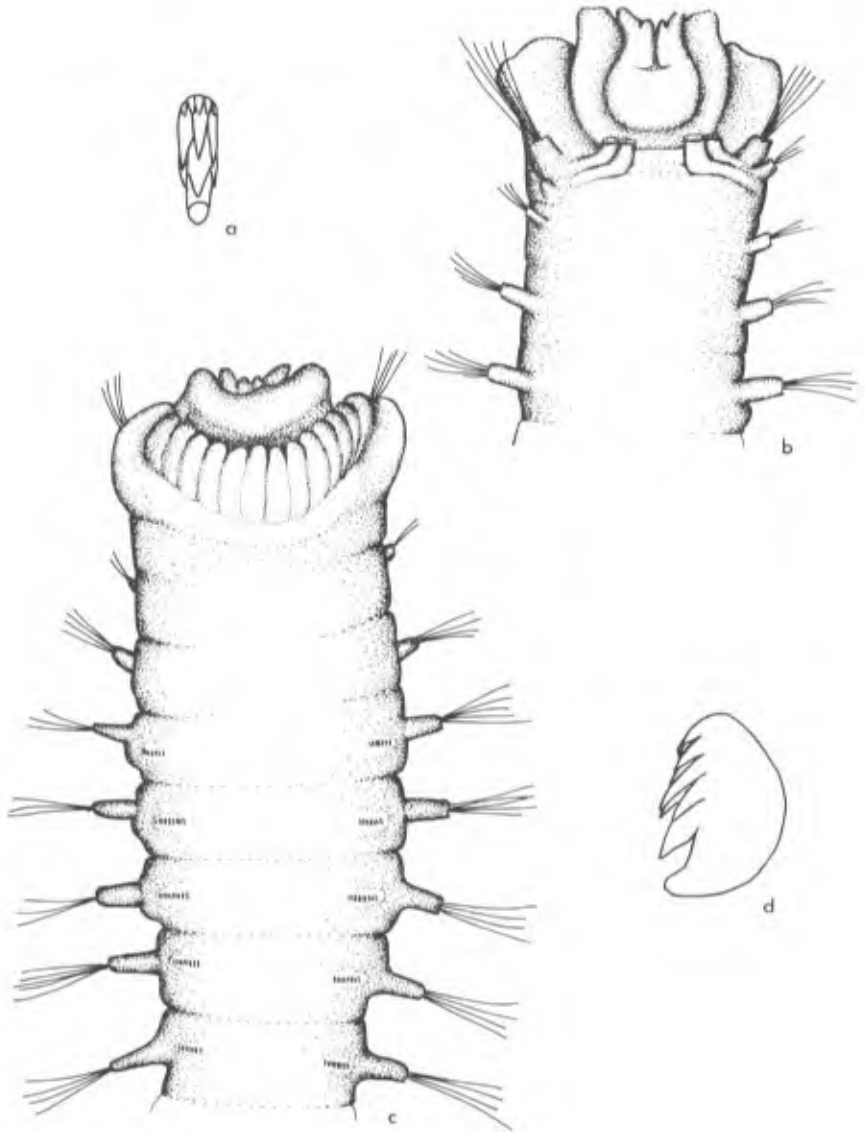


PLATE 61

Egamella quadribanchiata, new genus, new species

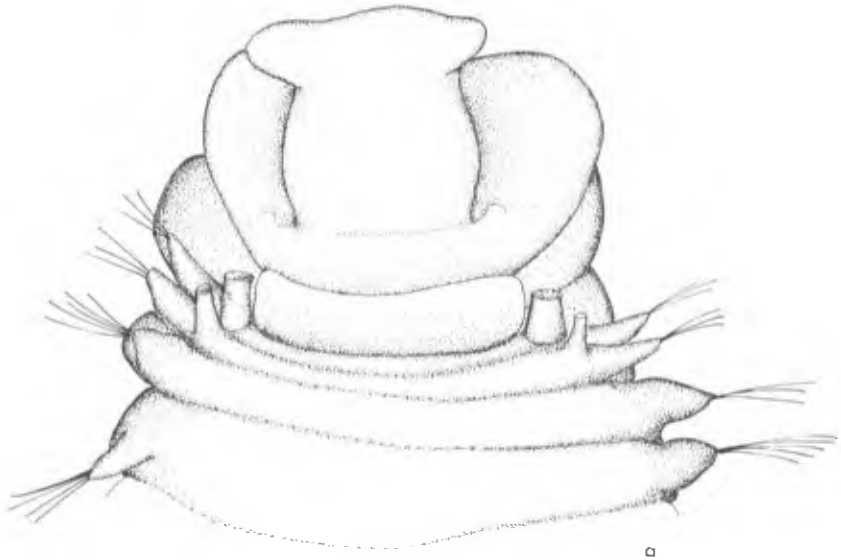
a. Anterior end, dorsal view, 75x

Lysippe mexicana, new species

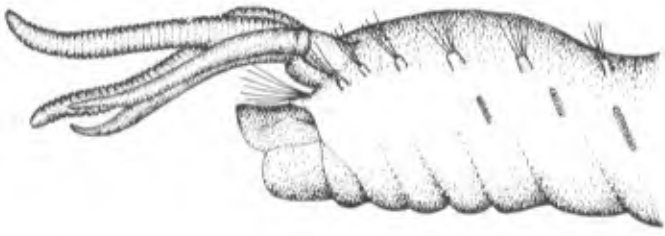
b. Anterior end, lateral view, 40x

c. Abdominal uncinus, lateral view, 1700x

d. Abdominal uncinus, frontal view, 1700x



a



b



c



d

PLATE 62

Melima exilia, new species

- a. Anterior end, dorsal view, 10x
- b. Thoracal uncinus, 950x
- c. Abdominal uncinus, 950x

Melima, species indeterminate

- d. Abdominal uncinus, lateral view, 950x
- e. Abdominal uncinus, frontal view, 950x
- f. Thoracal uncinus, lateral view, 950x
- g. Thoracal uncinus, frontal view, 950x
- h. Anterior end, dorsal view, 10x

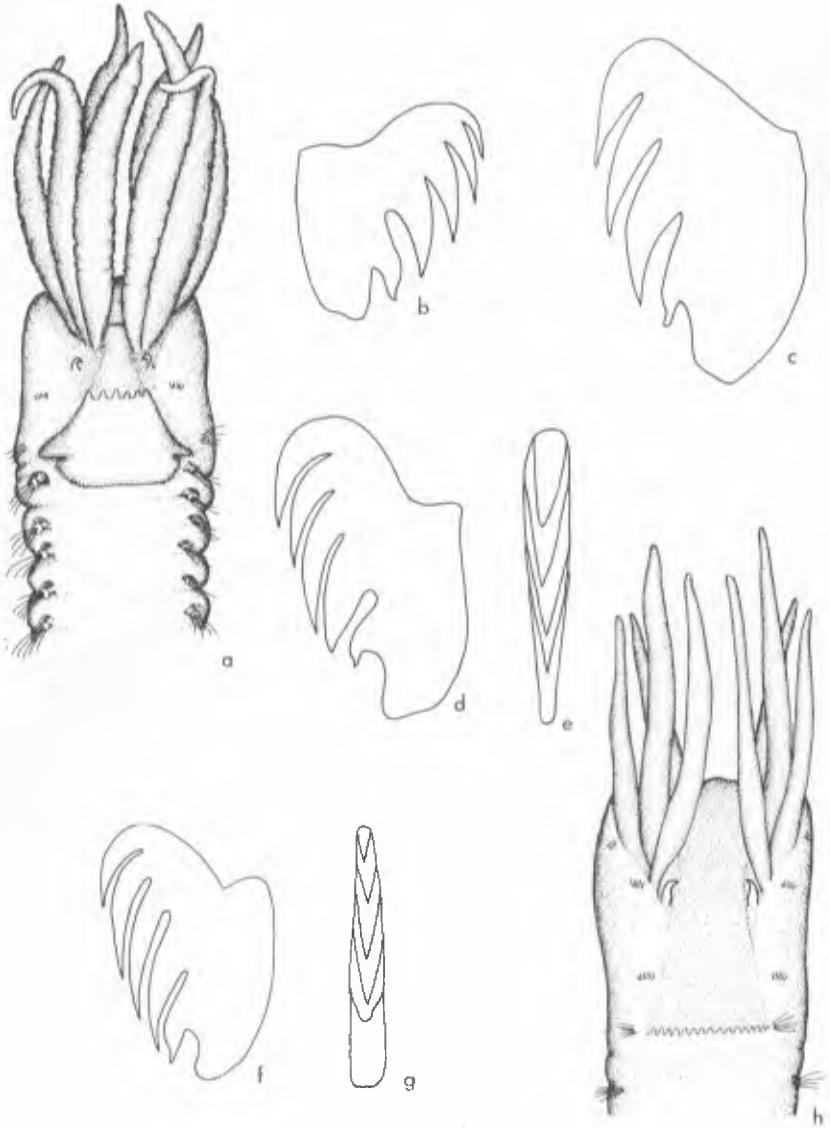


PLATE 63

Melinna plana, new species

- a. Anterior end, dorsal view, 10x
- b. Thoracal uncinus, 950x

Melinnampharete gracilis Hartman, 1969

- c. Anterior end, dorsal view, 50x

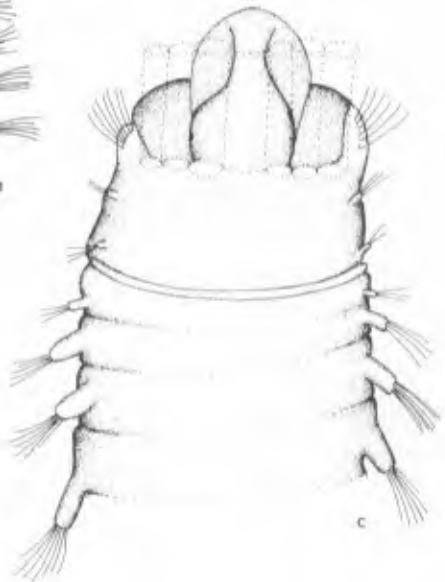
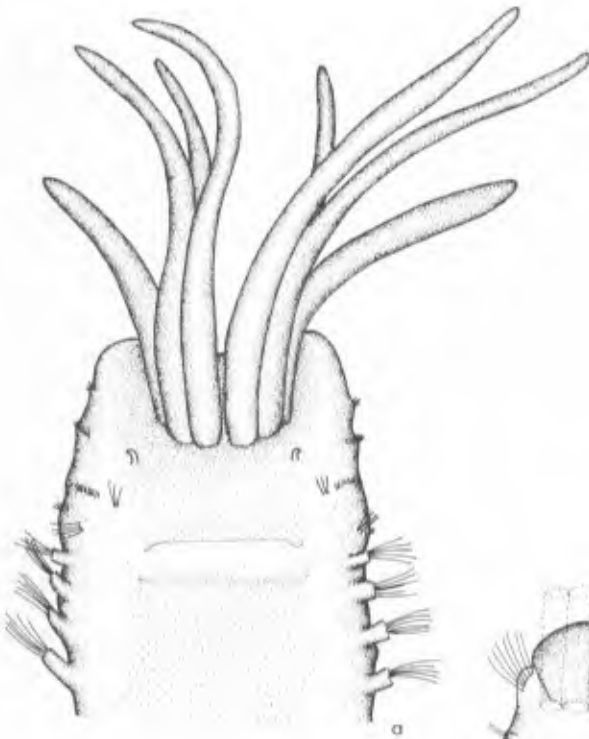


PLATE 64

Melinna tentaculata, new species

- a. Thoracal uncinus, 950x
- b. Abdominal uncinus, 950x
- c. Anterior end, lateral view, 25x
- d. Holotype, dorsal view, 10x

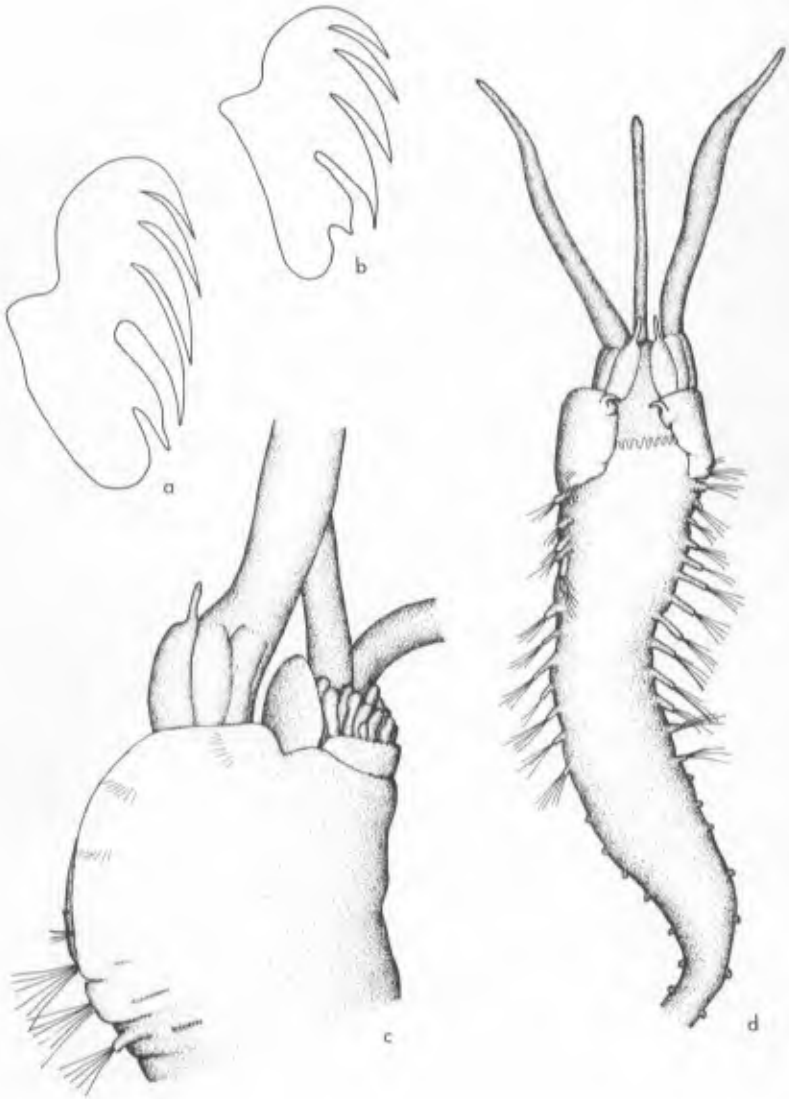


PLATE 65

Mexanage corrugata, new genus, new species

- a. Anterior end, dorsal view, 8x
- b. Anterior end, ventral view, 8x
- c. Thoracal uncinus, 750x

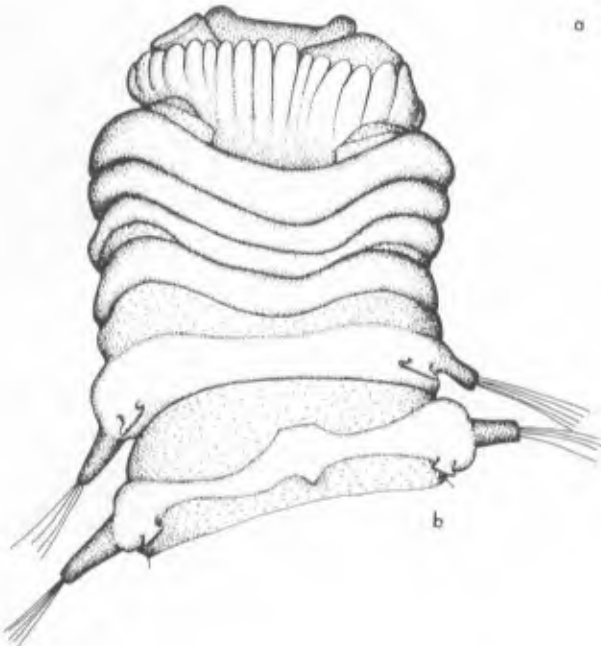
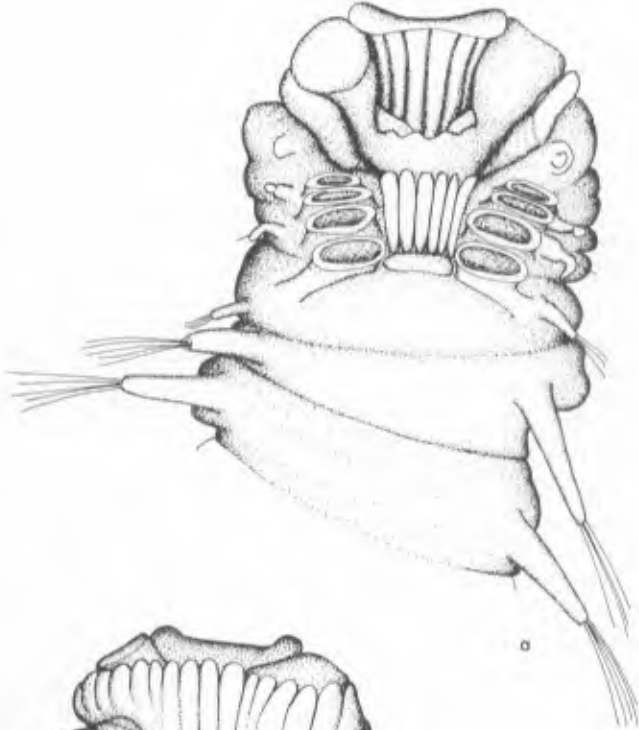


PLATE 66

Samythella interrupta, new species

- a. Anterior end, dorsal view, 50x
- b. Thoracal uncinus, 950x

Samythella pala, new species

- c. Anterior end, lateral view, 10x
- d. Thoracal uncinus, median parapodium, upper part of series, lateral view, 950x
- e. Thoracal uncinus, median parapodium, lower part of series, frontal view, 950x
- f. Anterior end, dorsal view, 16.5x

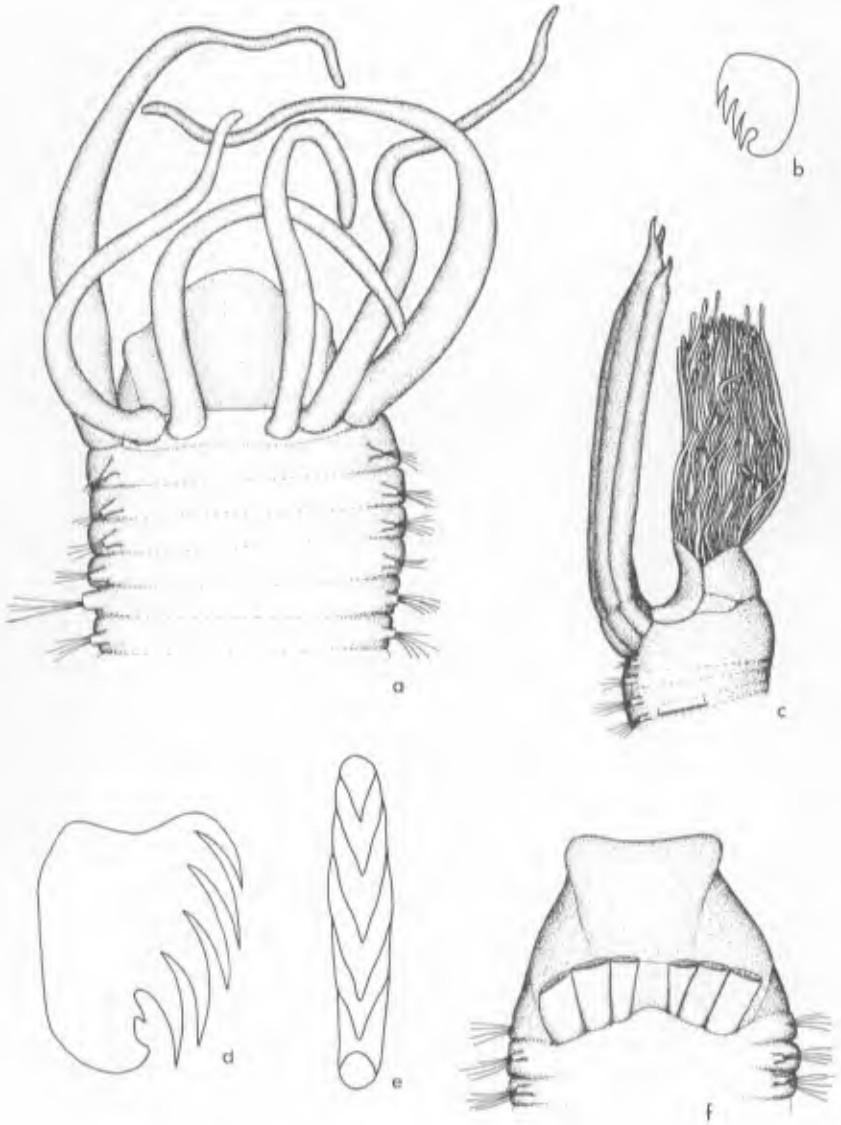


PLATE 67

Paraxionice artifex, new genus, new species

- a. Anterior end, dorsal view, 15x
- b. Median thoracal notoseta, 1700x
- c. Anterior end, ventral view, 15x
- d. Anterior end, lateral view, 15x
- e. Uncinus, second setiger, 1700x

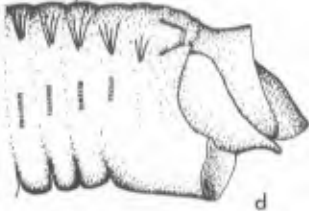
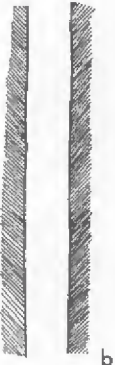
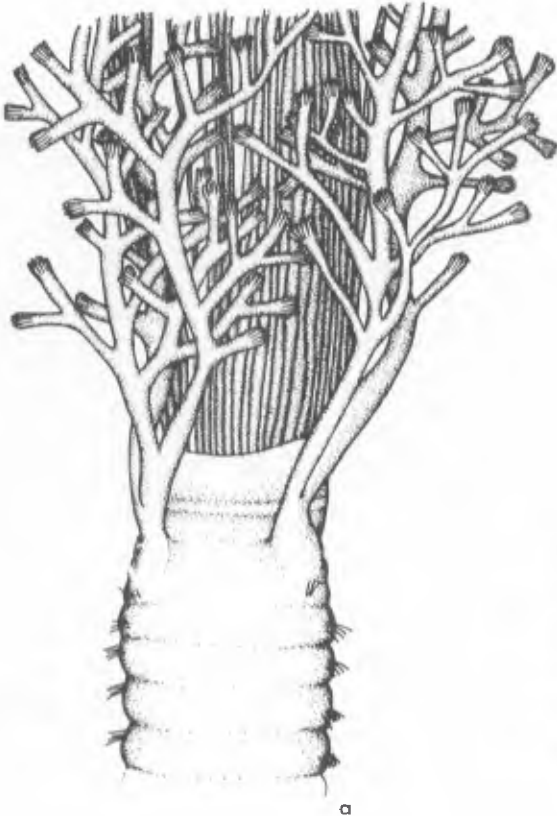


PLATE 68

Euchonella magna, new genus, new species

- a. Anterior end, dorsal view, 15x
- b. Anterior end, ventral view, 15x
- c. Uncinus, setiger 5, 600x
- d. Abdominal uncinus, 600x
- e. Posterior end, dorsal view, 15x
- f. Notopodial seta, thoracal setiger, 600x

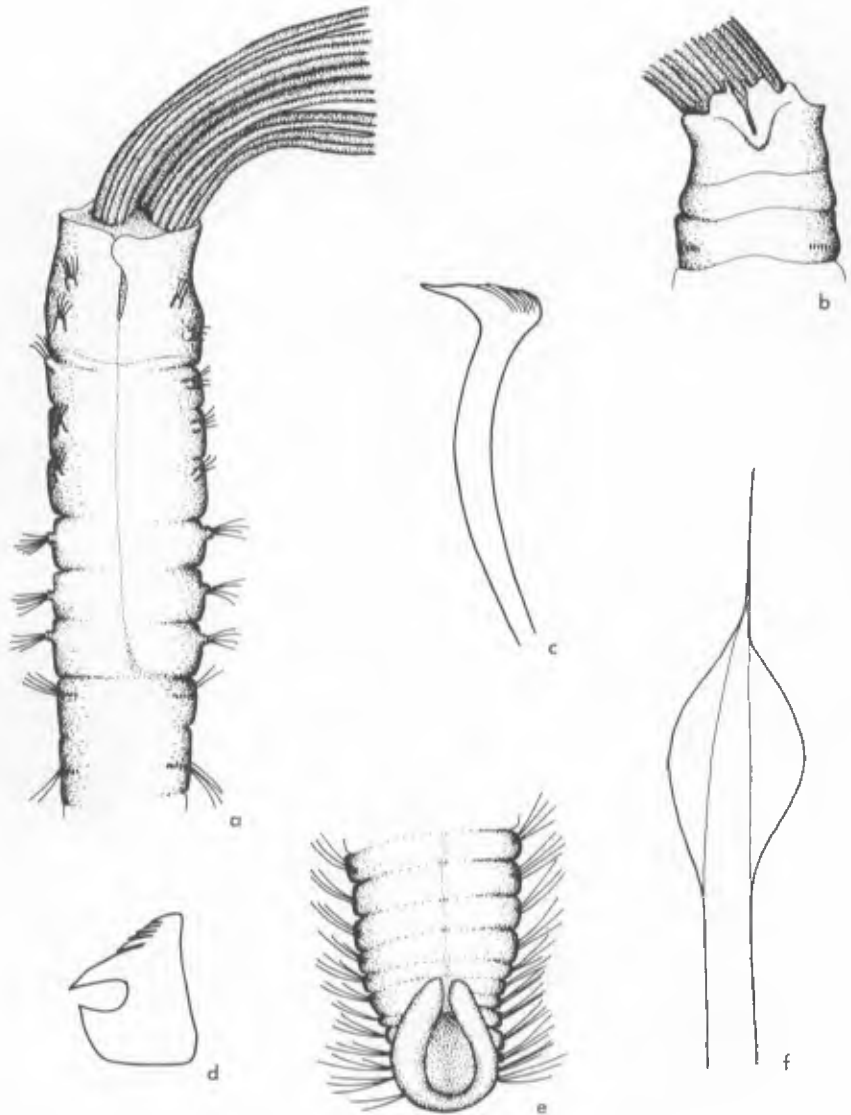
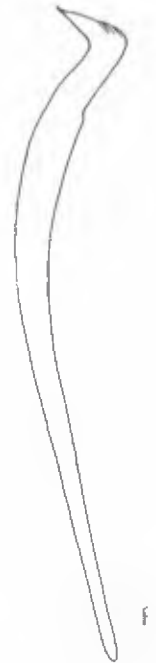
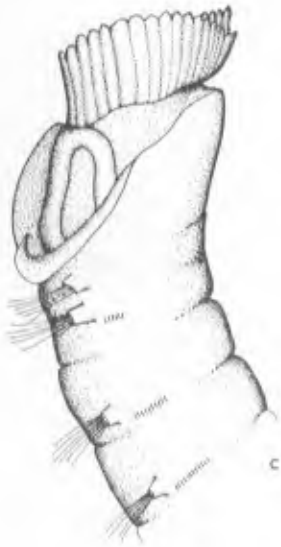


PLATE 69

Fabrisabella similis, new species

- a. Anterior end, dorsal view, 25x
- b. Anterior end, ventral view, 25x
- c. Anterior end, lateral view, 25x
- d. Notoseta, thoracal setiger, 385x
- e. Abdominal uncinus, 385x
- f. Thoracal uncinus, 385x



INDEX OF SCIENTIFIC NAMES

(Numbers in bold face refer to plates)

- aberrans, *Melinna*, 417
 abbranchiata, *Haploscoloplos*, 168
 abyssalis, *Aparaonis*, 172
 Nothria, 3, 14, 117, 123, 354
 Notomastus (*Notomastus*), 18,
 241, 248, 249, 354, 523
 Pherusa, 17, 215, 226-228, 354,
 414, 515
 Pseudeurythoe, 12, 38-43, 355,
 427
 abyssorum, *Leptoecia*, 4, 139
 Paronuphis, 4, 14, 116, 139, 354
 acarunculata, *Pseudeurythoe*,
 38-40, 42
 aciculata, *Aricidea* (*Cirrophorus*),
 181
 aciculatus, *Cirrophorus*, 16, 172,
 181, 350
Admetella dolichopus, 2, 24
 hastigerens, 2, 11, 23, 24, 351
 longipedata, 24
 adspersa, *Amage*, 416
Aedicira, 171, 173, 174
 alissetosa, 15, 172, 173-175,
 351, 491
 antennata, 15, 172, 174-176, 349
 belgica, 174, 175
 hartmani, 174, 175
 longicirrata, 15, 172, 176, 177,
 351, 493
 pacifica, 171, 174, 175
 sp., 177
africana, *Paraprionospio*, 189
 Pherusa plumosa, 413
agassizi, *Rhamphobranchium*, 116, 411
Aglaophamus, 80, 82
 elamellata, 83, 84, 89
 erectanoides, 83, 84, 86
 eugeniae, 13, 81-84, 351, 449
 fossae, 13, 81, 83, 84, 86, 351,
 355, 449, 451
 groenlandiae, 83, 84, 89
 minuscula, 83, 84
 paucilamellata, 13, 81, 83, 84,
 86, 351, 453
 posterobranchia, 83
 surrufa, 13, 81, 83, 84, 87, 89,
 351, 453, 455
 sp., 90
 sp. A, 13, 89
agnesiae, *Neanthes*, 71, 408
agulhana, *Neanthes*, 409
agulhasensis, *Lysippe*, 300, 301
alata, *Paraprionospio*, 188
alba, *Cossura*, 207
alissetosa, *Aedicira*, 15, 172,
 173-175, 351, 491
Amage, 278, 279, 295, 310, 312
 adspersa, 416
 anops, 279, 416
 arieticornuta, 280, 416
 asiaticus, 417
 auricula, 417
 sibogae, 417
 delus, 19, 277, 278-280, 351,
 417, 533
 inhamata, 278
 longibranchiata, 417
 perfecta, 279, 417
 scotica, 417
 sculpta, 281, 417
 scutata, 19, 277, 280, 281,
 345, 417, 533
 tumida, 417
ambigua, *Pseudeurythoe*, 38-40
amboimensis, *Diopatra*, 114
americana, *Eunice*, 14, 140, 141, 343
 Glycera, 13, 99-101, 343
 Piromis, 230, 415
Ammotrypane, 235, 238
 aulogaster, 17, 235, 338, 345
 pallida, 17, 235, 236, 349
Ampharete, 281, 288
 arctica, 19, 277, 281, 282, 535
 homa, 5
Ampharetidae, 5, 9, 10, 19, 274,
 316, 341
Ampharetinae, 274, 275, 288
Amphicteis, 282, 283, 293
 mucronata, 19, 277, 284, 285,
 343, 537
 obscurior, 5, 19, 278, 283,
 285, 351, 537
 orphanus, 5, 19, 278, 283,
 285, 286, 351, 535
 scaphobranchiata, 19, 278, 282,
 283, 286, 287, 345, 537
 uncopalca, 5, 19, 277, 282, 283,
 285, 287, 288, 351, 535
amphiglypta, *Asychis*, 18, 253, 255
 Maldane, 255
Amphinomidae, 2, 9, 12, 38
Amphitrite bombyx, 331, 332
Anaitides, 44
 dubia, 12, 44-46, 351, 429
 medipapillata, 45, 46
Anaitis polynoides, 52
anchylochaeta, *Ceratonereis*, 68
Ancistargis, 56
 falcata, 59
 hamata, 58, 59
 matsumagaensis, 58
 papillosus, 58
 verrucosa, 12, 56-59, 351, 435
Ancistrosyllis, 56, 57

- angelensis, *Nereis*, 13, 65, 72, 74,
 79, 353, 356, 443
 angusticollis, *Neanthes*, 409
 annae, *Aricidea*, 180
 annectens, *Lysippe*, 19, 277, 299,
 300, 347
 annulata, *Dorvillea*, 15, 162, 343
Goniada, 14, 106, 111, 343
Pseudeurythoe, 38-41
 annulatus, *Stauronereis*, 162
Anobothrus, 288, 289
 bimaculatus, 19, 277, 289-291,
 341, 345, 355, 539
 gracilis, 288, 289, 291
 mancus, 19, 277, 291-293, 351,
 539
 nasuta, 289
 occidentalis, 289
 trilobatus, 289
 anoculata, *Eulalia*, 12, 44, 49,
 50, 352, 433
 Spiophanes, 16, 186, 198, 355
 anoculis, *Nereis*, 72, 74, 76, 77
 anoculopsis, *Nereis*, 13, 65, 75-77,
 353, 445
 anops, *Amage*, 279, 416
 antennata, *Aedicira*, 15, 172, 174,
 175, 176, 349
 Aricidea, 175
 Eunice, 4, 14, 140-142, 343
 anuncata, *Prionospio*, 187, 354
 (*Prionospio*), 16, 193, 194, 499
Aonides gracilis, 183
Aparaonis, 172
 abyssalis, 172
Aphrodita, 21
 defendens, 2, 21
 longipalpa, 11, 21, 349
 negligens, 11, 21, 349
Aphroditidae, 2, 9, 11, 20
aphroditois, *Eunice*, 4, 14, 140,
 142, 343
Apoprionospio, 189, 190, 192
 caspersi, 192
 dayi, 192
 nova, 192
 pygmaeus, 192
 (*Apoprionospio*) *vermillionensis*,
Prionospio, 16, 187, 190-192,
 354, 497
Arabellidae, 9, 15, 161
 arctica, *Ampharete*, 19, 277, 281,
 282, 535
arenosa, *Pherusa*, 414
arenosus, *Piromis*, 215, 230, 415
areolata, *Leanira*, 33
 Sthenolepis, 11, 31, 33, 35,
 36, 355, 423
argus, *Dasychone*, 331
Aricidea, 171, 174, 177
 annae, 180
 antennata, 175
 (*Cirrophorus*) *aciculata*, 181
 claudiae, 180
 crassicaipitis, 16, 173, 177-179,
 351, 495
 curviseta, 178
 fragilis, 171
 lopezi, 16, 173, 179
 monicae, 178, 180
 neosuecica, 178
 similis, 16, 173, 179-181,
 349, 493
 suecica simplex, 178
 arieticornuta, *Amage*, 280, 416
 armandi, *Melinna*, 418
 armatopsis, *Idanthyrus*, 19, 271-273,
 353, 356, 531
 armatus, *Idanthyrus*, 273, 531
 armigera, *Glycinde*, 14, 105, 110,
 346, 356
Artacama, 317
 coniferi, 19, 317-318, 349
articulata, *Neanthes*, 409
artifex, *Paraxionice*, 19, 317,
 319-321, 354, 555
ascendens, *Ilyphagus*, 412
asiaticus, *Amage*, 417
aspera, *Pherusa*, 415
Asychis, 254
 amphiglypta, 18, 253, 255
 disparidentata, 18, 253, 255,
 256, 345, 355
 gotoi, 257
 lacera, 257
 lobata, 18, 253, 256-258,
 351, 525
 ramosus, 18, 253, 258, 352
 similis, 257
 sp., 258
 atentacula, *Pherusa*, 415
 atlantica, *Paranorthia*, 139, 411
 atlanticum, *Clavodorum*, 94
 Auchenoplax, 294, 296
 augeneri, *Neanthes*, 410
 aulogaster, *Ammotrypane*, 17, 235,
 338, 345
 auricula, *Amage*, 417
 sibogae, *Amage*, 417
Austrophyllum, 46
 charcoati, 46, 48
 exsilium 12, 44, 47, 48, 352, 431
 monroi, 46, 48
Axionice, 319
bathycola, *Samythella*, 314
Bathyglycinde, 106
 cedroensis, 14, 106-108, 110,
 352, 467
 lindbergi, 107, 108, 110
 mexicana, 14, 106-108, 110,
 352, 467
 belawanensis, *Neanthes*, 409

- belgica*, *Aedicira*, 174, 175
bengalensis, *Pherusa*, 227, 228, 414
bicanaliculata, *Nereis*, 80
 Platynereis, 13, 65, 80, 337,
 344
bicirrata, *Lumbrinereis*, 147
 Lumbrineris, 4, 15, 147
bifidus, *Piromis*, 230, 415
bifilaris, *Lumbrinereis*, 151, 152
 Lumbrineris, 204
bifurcatus, *Haploscoloplos*, 168, 169
bilineata, *Eulalia*, 51
bimaculatus, *Anobothrus*, 19, 277,
 289-291, 341, 345, 355, 539
bipes, *Rhaphobranchium*, 411
bitorquata, *Rhodine*, 18, 253,
 267-268, 348, 357
bocki, *Prionospio*, 196, 197
bombyx, *Amphitrite*, 331, 332
 Branchiomma, 332
Brada, 216, 219, 223
 glabra, 219
 pluribranchiata, 17, 216, 217,
 352
 verrucosa, 5, 17, 216, 217, 352
branchiata, *Cirrophorus*, 171
Branchiomma, 325, 331, 332
 bombyx, 332
 burrardum, 333
 circumspectum, 332
 koellikeri, 331, 332
branchiopoda, *Glycera*, 13, 100-102,
 104, 350
 capitata, 101
brandti, *Neanthes*, 409
brevibranchia, *Pista*, 321
brevibranchiata, *Pista*, 19, 317,
 321, 338, 347
 Rhaphobranchium, 411
brevicapitis, *Ephesiella*, 13, 94,
 96, 350, 459
 Sphaerodorum, 96
brevicornuta, *Paranorthia*, 116,
 139, 411
brevis, *Travisia*, 17, 235, 237,
 338, 348
brunnea, *Cossura*, 17, 208-210,
 352, 503
 Coniada, 14, 106, 111, 112, 346
 Neanthes indica, 409
 Pirakia, 12, 44, 53, 54,
 354, 429
burrardum, *Branchiomma*, 333
buskii, *Melinna*, 418
bythincola, *Ilyphagus*, 5, 17, 214,
 216, 224, 225, 353, 412
cacoides ferruginea, *Nephtys*, 91
calcis, *Leanira*, 11, 31, 32, 353
calida, *Califia*, 15, 163-165, 350
Califia, 162, 163, 165
 calida, 15, 163-165, 350
 chilensis, 165, 208
 mexicana, 15, 163, 164-166,
 352, 489
 schmitti, 165
californica, *Magelona*, 16, 200, 347
californiensis, *Clymenopsis*, 18, 253,
 260, 350
 Lumbrineris, 4, 15, 147, 148,
 338, 346
canariensis, *Pseudenrythoe*, 39, 41
candida, *Cossura*, 17, 208-212, 346
capense, *Rhaphobranchium*, 411
capensis, *Diplocirrus*, 217-219, 412
 Lysippe, 299, 300
capitata, *Glycera*, 13, 99-102, 104,
 346, 356
 Pherusa, 414
 branchiopoda, *Glycera*, 101
Capitellidae, 9, 10, 18, 239, 240, 252
capulata, *Pherusa*, 227, 414
caspersi, *Apoprionospio*, 192
caudata, *Neanthes*, 409
cedroensis, *Bathyglycinde*, 14,
 106-108, 110, 352, 467
 Lumbrineris, 4, 15, 147, 148,
 353
 Paraonides, 16, 173, 181, 182
 354
Ceratocephale, 65
 loveni, 66
 pacifica, 13, 65, 66, 346
Ceratonereis, 66
 anchochaeta, 68
 fakaravae, 68
 flagellipes, 68
 gorbunovi, 68
 incisa, 68
 karadagica, 68
 marmorata, 68
 mirabilis, 68
 pachychaeta, 68
 pectinifera, 68
 ramosa, 68
 scotiae, 68
 vermillionensis, 13, 65, 66,
 68, 352, 441
Chaetopteridae, 9, 16, 201, 202
Chaetozone, 203
 setosa, 16, 203, 346
 sp., 204
challengeriae, *Fauveliopsis*, 221
charcoti, *Austrophylum*, 46, 48
chilensis, *Califia*, 165, 208
 Cossura, 208
 Pantothrix, 214, 413
chilkaensis, *Neanthes*, 409
chingrihattensis, *Neanthes*, 71, 408
Chloecia viridis, 2
Chone, 326
 gracilis, 20, 326, 327, 338, 346
chuni, *Rhaphobranchium*, 411
cinctus, *Notomastus (Notomastus)*,
 18, 241, 250, 251, 354, 521

- circumspectum, Branchiomma, 332
 Megalomma, 20, 326, 332, 344
 Cirratulidae, 5, 9, 16, 202, 206
 Cirratulus, 204
 sinicolens, 5, 16, 203, 204, 352
 cirrifera, Prionospio, 187, 338, 348
 (Prionospio), 16, 194, 195
 Cirrophorus, 171, 181
 aciculatus, 16, 172, 181, 350
 branchiata, 171
 lyra, 16
 (Cirrophorus) aciculata, Aricidea, 181
 claudiae, Aricidea, 180
 clavatum, Clavodorum, 13, 94, 95, 346, 457
 Clavodorum, 94
 atlanticum, 94
 clavatum, 13, 94, 95, 346, 457
 Clistomastus, 248
 Clymaldane, 259
 laevis, 18, 253, 259, 260, 352, 527
 sibogae, 259, 260
 Clymene gracilis, 266
 (Praxillella) gracilis, 266
 Clymenopsis, 260
 californiensis, 18, 253, 260, 350
 coasta, Cossura, 208
 collarifera, Therochaeta, 215, 232, 233, 416
 commensalis, Flabelliderma, 223
 conchylega, Nothria, 115
 coniferi, Artacama, 19, 317, 318, 349
 cornuta, Nephtys, 13, 90, 344
 coronata, Therochaeta, 223, 416
 coronatus, Ilyphagus, 412
 corrugata, Mexamage, 19, 276, 310-312, 353, 551
 Cossura alba, 207
 brunnea, 17, 208-210, 352, 503
 candida, 17, 208-212, 346
 chilensis, 208
 coasta, 208
 delta, 207
 laeviseta, 207
 longocirrata, 207, 208
 pygodactyla, 207
 rostrata, 17, 208-212, 352, 503, 505
 sima, 17, 207, 212, 213, 352, 505, 507
 soyceri, 207
 Cossuridae, 9, 17, 206, 207
 crassibranchia, Streblosoma, 20, 317, 323, 338, 343
 crassicapitis, Aricidea, 16, 173, 177-179, 351, 495
 cricognatha, Neanthes, 409
 cristata, Maldane, 18, 253, 262-264, 353
 Melinna, 418
 heterodonta, Melinna, 303
 cristobalensis, Rhamphobrachium, 411
 crucifera, Neanthes, 410
 cruzensis, Lumbrineris, 15, 147, 149, 344
 cuculligera, Maldane, 264
 curta, Lepidasthenia, 2, 11, 23, 25, 353
 curviseta, Aricidea, 178
 curvisetis, Pherusa, 415
 cylindrifera, Haploscoloplos, 169
 Dasybranchus, 241, 246
 glabrus, 242
 lumbricoides, 18, 241, 242, 343
 sp., 242
 Dasychone, 331
 argus, 331
 dawydovi, Neanthes, 409
 dayi, Apopriospio, 192
 Decamastus, 244
 defendens, Aphrodita, 2, 21
 delta, Cossura, 207
 delus, Amage, 19, 277, 278-280, 351, 417, 533
 Sabellides, 5, 278
 denticulata, Melinna, 418
 Diopatra, 112, 114
 amboinensis, 114
 Diploeirrus, 213, 214, 217-219, 412
 capensis, 217, 218, 219, 412
 glaucus, 214, 219, 412
 hirsutus, 217, 219, 412
 longisetosus, 217, 219, 412
 micans, 17, 215, 218, 219, 352, 412, 509
 disparidentata, Asychis, 18, 253, 255, 256, 345, 355
 Maldane, 255
 diversicolor, Neanthes, 409
 diversosetosum, Rhamphobrachium, 411
 Dodecaceria, 278
 dolichopus, Admetella, 2, 24
 Dorvillea annulata, 15, 162, 343
 Dorvilleidae, 9, 15, 162
 Drilonereis, 161
 falcata, 15, 161, 338, 346, 355
 dubia, Anaitides, 12, 44-46, 351, 429
 Pherusa, 413
 Prionospio malmgreni, 194
 Pseudeurythoe, 38
 Ecamphiteis, 293, 294, 296
 elongata, 19, 275, 294, 295, 352, 541
 Egamella, 294, 295, 296
 quadribanchiata, 19, 276, 296, 297, 352, 543
 ehlersi, Rhamphobrachium, 411
 elamellata, Aglaophamus, 83, 84, 89
 elisabethae, Melinna, 418

- clitoralis*, *Nereis*, 79
elongata, *Ecamplichteis*, 19, 275,
 294, 295, 352, 541
Samythella, 314
Scoloplos, 166
elongatus, *Haploscoloplos*, 15, 163,
 166, 168, 169, 343
Ephesiella, 95, 97
brevicapitis, 13, 94, 96, 350, 459
Ephesiopsis, 97
Epidiopatra, 112, 114
hupferiana, 114
erectanoides, *Aglaophamus*, 83, 84,
 86
eremita, *Onuphis*, 115
eruca, *Pherusa*, 227, 415
indica, *Pherusa*, 227, 415
essenbergae, *Flabelliderma*, 223
Euchone, 327
Euchonella, 327
magna, 20, 326-329, 334,
 352, 557
Euclymene, 260
reticulata, 18, 254, 260, 261,
 346, 355, 529
sp., 261
Euclymeninae, 268
eugeniae, *Aglaophamus*, 13, 81-84,
 351, 449
Lumbrineris, 4, 15, 146, 149,
 150, 353, 479
Eulalia, 48, 51, 54, 341
anoculata, 12, 44, 49, 50,
 352, 433
bilineata, 51
lobocephala, 51, 52
longicirrata, 50
mexicana, 12, 44, 50-52, 349,
 355, 433
novaezelandiae, 51, 52
sigeformis, 50
sphaerocephala, 46
sp., 52
Eunice, 140
americana, 14, 140, 141, 343
antennata, 4, 14, 140-142, 343
aphroditois, 4, 14, 140, 142,
 343
megabranchia, 4, 14, 140, 142,
 143, 352
segregata, 4, 14, 140, 141,
 143, 144, 350
semisegregata, 4, 14, 140, 141,
 143, 144, 145
vittata, 4, 14, 140, 141, 145,
 343
Eunicea, 145, 146
Eunicidae, 4, 9, 14, 140, 145
Euprosine, 43
paucibranchiata, 12, 43, 350
Euprosinidae, 9, 12, 43
Eurythoe, spp., 38
exilia, *Melinna*, 19, 276, 302,
 303, 418, 545
exsilium, *Austrophyllum*, 12, 44,
 47, 48, 352, 431
Fabricinae, 325, 327, 331, 334
Fabrisabella, 329
similis, 20, 326, 329, 330,
 352, 559
vasculosa, 330
fakaravae, *Ceratonereis*, 68
falcata, *Ancistargis*, 59
Drilonereis, 15, 161, 338, 346,
 355
Pherusa, 413
fallax, *Prionospio*, 194
fauchaldi, *Melinna*, 417
fauveli, *Nereis*, 79
Fauveliopsis, 219
challengeriae, 221
glabra, 17, 216, 219, 220, 350
rugosa, 17, 216, 220-222, 352,
 511
ferruginea, *Nephtys*, 13, 91, 344
caecoides, *Nephtys*, 91
fimbriata, *Spiophanes*, 16, 186,
 199, 355
fissurata, *Paranorthia*, 14, 117, 135-
 139, 144, 354, 411, 475, 477
flabellata, *Therochaeta*, 232, 233, 416
Flabelliderma, 222, 223
commensalis, 223
essenbergae, 223
macrochaeta, 17, 222, 223, 352,
 513
Flahelligella, 223, 224
mexicana, 17, 215, 223, 224,
 352, 511
papillata, 224
Flabelligeridae, 5, 9, 10, 17, 213, 412
flagellipes, *Ceratonereis*, 68
foetida, *Travisia*, 17, 235, 237, 238,
 348, 519
foliosa, *Ninoe*, 15, 146, 153-156, 160,
 347, 356, 479, 481
foliosus, *Haploscoloplos*, 169
fossae, *Aglaophamus*, 13, 81, 83, 84,
 86, 351, 355, 449, 451
Nereis, 13, 65, 74, 77, 79, 353,
 356, 447
fossor, *Sternaspis*, 17, 238, 239, 348
fragilis, *Aricidea*, 171
Haploscoloplos, 169
intermedius, *Haploscoloplos*,
 168, 169
fragosa, *Paradiopatra*, 113, 115
fucata, *Neanthes*, 409
fusca, *Ninoe*, 4, 15, 146, 156,
 158, 354
fuscoides, *Ninoe*, 15, 146, 156-158,
 354, 483
glabra, *Brada*, 219

- Fauveliopsis, 17, 216, 219,
 220, 350
 glabrus, *Dasybranchus*, 242
 Mediomastus, 243
 Neomediomastus, 18, 240, 243,
 244, 353
 Neonotomastus, 18, 240, 244-
 246, 353, 521
 glandiincta, *Neanthes*, 409
 glaucus, *Diplocirrus*, 214, 219, 412
 glutinatrix, *Paradiopatra*, 113
 Glycera, 99, 100, 104
 americana, 13, 99-101, 343
 branchiopoda, 13, 100-102, 104,
 350
 capitata, 13, 99-102, 104,
 346, 356
 branchiopoda, 101
 mexicana, 2, 103
 oxycephala, 13, 99, 100,
 103, 343
 profundi, 3, 13, 100-104, 352,
 356, 465
 tesselata, 13, 99, 100, 104, 105,
 342, 346, 356
 Glyceridae, 2, 9, 13, 99, 105
 Glycinde, 106, 110
 armigera, 14, 105, 110, 346, 356
 Goniada, 111
 annulata, 14, 106, 111, 343
 brunnea, 14, 106, 111, 112, 346
 Goniadidae, 9, 14, 105, 112
 gorbunovi, *Ceratonereis*, 68
 gotoi, *Asychis*, 257
 gracilis, *Anobothrus*, 288, 289, 291
 Aonides, 183
 Chone, 20, 326, 327, 338, 346
 Clymene, 266
 (*Praxillella*), 266
 Melinnampharete, 19, 277, 308,
 353, 547
 Myriochele, 18, 269-271, 347
 oculata, *Paraonis*, 16, 173,
 183, 184, 350
 Paraonis, 16, 172, 173, 183,
 185, 347
 Paronuphis, 116
 Piromis, 230, 416
 Praxillella, 18, 254, 266, 267,
 338, 348
 granulosa, *Pherusa*, 415
 groenlandiae, *Aglaophamus*, 83, 84,
 89
 gymnopapillata, *Pherusa*, 415
 hainanica, *Nereis*, 79
 hamata, *Ancistargis*, 58, 59
 hamatus, *Thelepus*, 20, 317, 323,
 324, 348, 357
 hamocarens, *Piromis*, 230, 416
 hanaokai, *Sigambra*, 64
 Haploscoloplos, 162, 166, 168
 abranchiata, 168
 bifurcatus, 168, 169
 cylindrifera, 169
 elongatus, 15, 163, 166, 168,
 169, 343
 foliosus, 169
 fragilis, 169
 intermedius, 168, 169
 kerguelensis, 15, 163, 166-169,
 339, 350, 489
 minutus, 169
 mexicanus, 15, 163, 167-169,
 352, 356, 489
 panamensis, 168, 169
 robustus, 169
 sp., 169
 Harmothoe mexicana, 2, 11, 23, 24,
 349
 Harmothoinae, 29
 hartmanae, *Rhynchobranchium*, 411
 hartmani, *Aedicira*, 174, 175
 hastigerens, *Admetella*, 2, 11, 23,
 24, 351
 havaica, *Pherusa*, 413
 heeri, *Myriochele*, 18, 269, 270, 347
 Hemipodus mexicanus, 103, 104
 hemipodus, *Leiochrides*, 18, 241-243,
 350
 Heptaceras, 112, 114, 115
 phyllocirrus, 115
 Hesionidae, 9, 12, 55
 heterobranchia, *Prionospio*, 196
 newportensis, *Prionospio*, 196
 heterodonta, *Melinna*, 19, 276,
 303, 304, 350, 418
 cristata, *Melinna*, 303
 heteropapillata, *Pherusa*, 227, 228,
 415
 hiatidentata, *Nothria*, 3, 14, 117,
 123, 127, 354
 Onuphis, 123, 124, 127
 hirsuta, *Pseudeurythoe*, 39, 40, 41
 hirsutus, *Diplocirrus*, 217, 219, 412
 llyphagus, 412
 homa, *Ampharete*, 5
 hospitis, *Piromis*, 17, 215, 229-231,
 337, 344, 416, 517
 hupferiana, *Epidiopatra*, 114
 Hyalinoecia, 112, 114-116, 118, 124
 juvenalis, 3, 14, 117-119, 343
 leucacra, 3, 14, 116, 118, 119,
 352, 469
 stricta, 3, 14, 117, 120, 122,
 124, 352
 tecton, 3, 14, 116, 118, 121,
 122, 353, 469
 tubicola, 115, 120
 stricta, 120
 sp., 122
 icosiensis, *Nereis*, 79
 Idanthyrus, 271, 341
 armatopsis, 19, 271-273, 353,
 356, 531

- armatus, 273, 531
 ijimai, *Neanthes*, 410
 llyphagus, 213, 214, 224, 412
 ascendens, 412
 bythincola, 5, 17, 214, 216,
 224, 225, 353, 412
 coronatus, 412
 hirsutus, 412
 ilyvestis, 412
 octobranchus, 413
 pluto, 413
 wyvillei, 413
 ilyvestis, llyphagus, 412
 inaequibranchia, *Paraprionospio*
 pinnata, 189
 incerta, *Pherusa*, 415
 incisa, *Ceratonereis*, 68
 index, *Lumbrineris*, 15, 146, 150,
 347, 356
 japonica, 150
 indica, *Neanthes*, 409
 brunnea, *Neanthes*, 409
 Pherusa eruca, 227, 415
 inflata, *Pherusa*, 17, 215, 228, 414
 Trophonia, 228
 inflatum, *Scalibregma*, 17, 234,
 348, 357
 inhamata, *Amage*, 278
 intermedia, *Pseudopotamilla*, 20,
 326, 333, 334, 345, 356
 intermedius, *Haploscoloplos*
 fragilis, 168, 169
 interrupta, *Lepidasthenia*, 26
 Samythella, 19, 276, 313, 314,
 316, 355, 553
 iridescens, *Northia*, 124
 Nothria, 3, 14, 117, 124, 125,
 128, 130, 344
 Isocirrus, 261
 longiceps, 18, 254, 261, 262,
 346, 356
 izuensis, *Sthenolepis*, 35, 36
 japonica, *Scionella*, 20, 317, 322,
 323, 338, 348, 357
 index, *Lumbrineris*, 150
 javanica, *Sthenolepis*, 35, 36
 johnsoni, *Poecilochaetus*, 16, 201,
 339, 347
 juvenalis, *Hyalinoecia*, 3, 14,
 117, 118, 119, 343
 karadagica, *Ceratonereis*, 68
 kerguelarum, *Pherusa*, 413
 kerguelensis, *Haploscoloplos*, 15,
 163, 166-169, 339, 350, 489
 minutus, *Haploscoloplos*, 169
 Neanthes, 409
 oligodonta, *Neanthes*, 409
 Scoloplos, 166
 kinsemboanus, *Pherusa*, 414
 koellikeri, *Branchiomma*, 331, 332
 labiata, *Lysippe*, 298, 299, 300
 lacera, *Asychis*, 257
Lacydoniidae, 9, 12, 54
Laetmonice, 22
 producta wyvillei, 11, 20, 22
 sp., 23
 laevis, *Clymaldane*, 18, 253, 259,
 260, 352, 527
 Pherusa, 414
 laeviseta, *Cossura*, 207
Lagisca multisetosa, 2, 24
lagunae, *Lumbrineris*, 15, 147,
 150-152, 347, 356
Laonice, 186, 187
 sacculata, 16, 186-188, 338,
 346
larentukana, *Neanthes*, 410
latens, *Nicolea*, 5, 19, 317, 318, 353
latreilli, *Lumbrineris*, 15, 147, 148,
 151, 152
Leanira, 32
 areolata, 33
 calcis, 11, 31, 32, 353
Leiochrides, 242
 hemipodus, 18, 241-243, 350
(Leodamas) mazatlanensis, *Scoloplos*,
 15, 163, 169-171, 355, 491
 tribulosus, *Scoloplos*, 170, 171
Leodice segregata, 135, 143, 144
Lepidasthenia, 25
 curta, 2, 11, 23, 25, 353
 interrupta, 26
Lepidonotinae, 29
Lepidonotus, 26
 squamatus, 11, 23, 26, 27,
 346, 356
 versicolor, 11, 23, 27, 344
lepta, *Nothria*, 14, 117, 123, 125,
 131, 354
 Onuphis, 3, 125, 126
Leptoecia abyssorum, 4, 139
leucacra, *Hyalinoecia*, 3, 14, 116,
 118, 119, 352, 469
limicolus, *Phyllochaetopterus*, 16,
 201, 202, 350
lindbergi, *Bathyglycinde*, 107, 108,
 110
lineus, *Neoheteromastus*, 18, 241,
 243, 350
litabanchia, *Onuphis*, 3, 14, 117,
 125, 126, 130, 131, 354
lithothamnica, *Nereis*, 79
lobata, *Asychis*, 18, 253, 256-258,
 351, 525
lobocephala, *Eulalia*, 51, 52
lobulata, *Prionospio*, 187, 354
 (*Prionospio*), 16, 195-197,
 501
longensis, *Lumbrineris*, 4, 15, 147,
 152, 353
longibranchia, *Ninoe*, 15, 146, 155,
 158-160, 354, 485
longibranchiata, *Amage*, 417

- longiceps*, *Isocirrus*, 18, 254, 261,
 262, 346, 356
Pseudoclymene, 261
longicirrata, *Aedicira*, 15, 172,
 176, 177, 351, 493
Eulalia, 50
longilingulis, *Neanthes*, 410
longior, *Nereis*, 79
longipalpa, *Aphrodita*, 11, 21, 349
longipedata, *Admetella*, 24
longisetis, *Sphaerephesia*, 13, 94,
 97, 98, 99, 461
longisetosum, *Rhamphobrachium*, 411
longisetosus, *Diplocirrus*, 217,
 219, 412
longocirrata, *Cossura*, 207, 208
lopezi, *Aricidea*, 16, 173, 179
loveni, *Ceratocephale*, 66
pacifica, *Ceratocephale*, 13, 65,
 66, 346
lumbricoides, *Dasybranchus*, 18,
 241, 242, 343
Lumbrineris bicirrata, 147
bifilaris, 151, 152
Lumbrineridae, 4, 9, 10, 15, 145,
 160
Lumbrineris, 145, 146
bicirrata, 4, 15, 147
bifilaris, 204
californiensis, 4, 15, 147,
 148, 338, 346
cedroensis, 4, 15, 147, 148,
 353
cruzensis, 15, 147, 149, 344
eugeniae, 4, 15, 146, 149,
 150, 353, 479
index, 15, 146, 150, 347, 356
japonica *index*, 150
lagunae, 15, 147, 150-152,
 347, 356
latreilli, 15, 147, 148, 151,
 152
longensis, 4, 15, 147, 152, 353
moorei, 4, 15, 147, 153, 353
sp., 153
lyra, *Cirrophorus*, 16
Paradoneis, 171, 173, 185, 347
Paraonides, 185
Paraonis (Paraonides), 185
Lysippe, 293, 298
agulhasensis, 300, 301
annectens, 19, 277, 299, 300,
 347
capensis, 299, 300
labiata, 298, 299, 300
mexicana, 19, 277, 299-301,
 353, 543
macrobranchiata, *Paranorthia*, 139,
 411
macrochaeta, *Flabelliderma*, 17,
 222, 223, 352, 513
maculata, *Melinna*, 418
maculatum, *Rhamphobrachium*, 412
magellanica, *Sthenolepis*, 35, 36
Magelona, 200
californica, 16, 200, 347
Magelonidae, 9, 16, 200
magna, *Euchonella*, 20, 326-329,
 334, 352, 557
magnus, *Notodasus*, 18, 141, 246,
 247, 337, 344, 523
Notomastus (Notomastus), 18,
 241, 251, 345, 356
major, *Sternaspis*, 5
malayensis, *Prionospio steenstrupi*,
 194, 196, 197
Maldane, 254, 262, 264
amphiglypta, 255
crisiata, 18, 253, 262-264, 353
cuculligera, 264
disparidentata, 255
monilata, 18, 253, 263-265,
 353, 529
sarsi, 18, 253, 263, 265, 336, 347
similis, 5
Maldanidae, 5, 9, 10, 18, 252
malngreni, *Melinna*, 418
dubia, *Prionospio*, 194
Prionospio, 187, 194, 196, 348
Prionospio (Prionospio), 16,
 197, 198
mancus, *Anobothrus*, 19, 277,
 291-293, 351, 539
marchadi, *Melinna*, 418
marmorata, *Ceratonereis*, 68
Marphysa sanguinea, 56
matsunagaensis, *Ancistargis*, 58
mazatlanensis, *Scoloplos (Leodamas)*,
 15, 163, 169-171, 355, 491
Mediomastus glabrus, 243
medipapillata, *Anaitides*, 45, 46
megabranchia, *Eunice*, 4, 14, 140,
 142, 143, 352
Megalomma, 331, 332, 333
circumspectum, 20, 326, 332,
 344
splendida, 20, 332, 333, 344
tenella, 326
meggitti, *Neanthes*, 409
Melinna, 301, 302, 306, 417
aberrans, 417
armandi, 418
buskii, 418
crisiata, 418
heterodonta, 303
denticulata, 418
elisabethae, 418
exilia, 19, 276, 302, 303,
 418, 545
fauchaldi, 417
heterodonta, 19, 276, 303, 304,
 350, 418
maculata, 418
malngreni, 418

- marchadi, 418
 monoceroides, 418
 ochotica, 302, 303, 419
 oculata, 418
 pacifica, 419
 palmata, 417
 parumdentata, 418
 plana, 19, 276, 304, 305, 417,
 547
 profunda, 419
 tentaculata, 19, 276, 305-307,
 353, 418, 549
 uruguayi, 418
 sp., 307, 545
 Melinnampharete, 308
 gracilis, 19, 277, 308, 353, 547
 Melinnexis, 309, 419
 moorei, 19, 309, 350
 Melinninae, 274, 278
 Melinnoides, 294, 296
 Mexamage, 275, 293, 309, 310
 corrugata, 19, 276, 310-312,
 353, 551
 mexicana, Bathyglycinde, 14, 106-
 108, 110, 352, 467
 Califa, 15, 163, 164-166,
 352, 487
 Eulalia, 12, 44, 50-52, 349,
 355, 433
 Flabelligella, 17, 215, 223-224,
 352, 511
 Glycera, 2, 103
 Harmothoe, 2, 11, 23, 24, 349
 Lysippe, 19, 277, 299-301,
 353, 543
 Neanthes, 13, 65, 70, 71, 353,
 408, 443
 Nothria, 3, 14, 117, 126, 127,
 130, 354
 Subadyte, 11, 23, 27, 29,
 349, 423
 mexicanus, Haploscoloplos, 15, 163,
 167-169, 352, 356, 489
 Hemipodus, 103, 104
 micans, Diplocirrus, 17, 215, 218,
 219, 352, 412, 509
 microcephala, Pseudeurythoe, 39, 40
 minuscula, Aglaophamus, 83, 84
 minuta, Pseudeurythoe, 39, 40, 42
 mirabilis, Ceratonereis, 68
 mirasetis, Pilargis, 12, 56, 59,
 60, 354, 437
 mjoebergi, Subadyte, 28, 29
 monicae, Aricidea, 178, 180
 monilaris, Tharyx, 17, 203, 205,
 338, 348, 357
 monilata, Maldane, 18, 253, 263,
 265, 353, 529
 monilifera, Pherusa, 225, 227, 228,
 415
 monoceroides, Melinna, 418
 monroi, Austrophyllum, 46, 48
 Pherusa, 414
 moorei, Lumbrineris, 4, 15, 147,
 153, 353
 Melinnexis, 19, 309, 350
 mossambica, Neanthes, 410
 mucronata, Amphicteis, 19, 277, 284,
 285, 343, 537
 multibranchiata, Paraonis, 185
 multifilis, Tharyx, 17, 203, 205,
 206, 338, 348, 357
 multisetosa, Lagisca, 2, 24
 Myriochele, 268, 269
 gracilis, 18, 269-271, 347
 heeri, 18, 269, 270, 347
 pygidialis, 18, 269, 270, 353
 Myxicolinae, 325
 nanciae, Neanthes, 410
 nannognathus, Onuphis, 3, 14,
 118, 130, 131, 354
 nasuta, Anobothrus, 289
 Neanthes, 69
 agnesiae, 71, 408
 agulhana, 409
 angusticollis, 409
 articulata, 409
 augeneri, 410
 belawanensis, 409
 brandti, 409
 caudata, 409
 chilkaensis, 409
 chingrihattensis, 71, 408
 cricognatha, 409
 crucifera, 410
 dawydovi, 409
 diversicolor, 409
 fucata, 409
 glandicincta, 409
 ijimai, 410
 indica, 409
 brunnea, 409
 kerguelensis, 409
 oligodonta, 409
 larentukana, 410
 longilingulis, 410
 meggitti, 409
 mexicana, 13, 65, 70, 71, 353,
 408, 443
 mossambica, 410
 nanciae, 410
 noodti, 410
 oxypoda, 410
 papillosa, 408
 reducta, 409
 roosevelti, 409
 ruficeps, 410
 sakhalinensis, 410
 seridentata, 410
 succinea, 410
 talehsapensis, 409
 typhla, 409
 unifasciata, 409
 vaali, 409

- verrillii, 410
 virens, 71, 408
 vitabunda, 409
 willeyi, 410
 neapolitana, Paraonides, 172, 182
 nebulosa, Onuphis, 14, 118, 132, 341, 347, 356, 473
 neglecta, Samythella, 314
 negligens, Aphrodita, 11, 21, 349
 Pherusa, 415
 Neoheteromastus, 243
 lineus, 18, 241, 243, 350
 Neomediomastus, 243
 glabrus, 18, 240, 243, 244, 353
 Neonotomastus, 244
 glabrus, 18, 240, 244-246, 353, 521
 neopapillata, Pherusa, 413
 neosuecica, Aricidea, 178
 Nephthys paradoxa, 91
 squamosa, 92
 Nephthyidae, 3, 9, 13, 81, 92
 Nephthys, 80, 90
 Nephthys caecoides ferruginea, 91
 cornuta, 13, 90, 344
 ferruginea, 13, 91, 344
 paradoxa, 13, 81, 91, 347
 squamosa, 3, 13, 81, 92, 342, 347, 356, 453
 Nereidae, 9, 13, 64, 81
 Nereis, 69, 72, 81
 angelensis, 13, 65, 72, 74, 79, 353, 356, 443
 anoculis, 72, 74, 76, 77
 anoculopsis, 13, 65, 75-77, 353, 445
 bicanaliculata, 80
 elitoralalis, 79
 fauveli, 79
 fossae, 13, 65, 74, 77, 79, 353, 356, 447
 hainanica, 79
 icosiensis, 79
 lithothamnica, 79
 longior, 79
 profundi, 72, 74
 torta, 79
 zonata, 13, 65, 80, 344
 spp., 69
 newportensis, Prionospio
 heterobranchia, 196
 Nicolea, 318
 latens, 5, 19, 317, 318, 353
 Nicomache, 265
 sp., 265
 Ninoe, 145, 146, 153
 foliosa, 15, 146, 153-156, 160, 347, 356, 479, 481
 fusca, 4, 15, 146, 156, 158, 354
 fuscoides, 15, 146, 156-158, 354
 longibranchia, 5, 146, 155, 158-160, 354, 485
 palmata, 155, 156, 160
 pulchra, 155, 156, 160
 sp., 160
 noodti, Neanthes, 410
 nordica, Paraonides, 182
 Nortluia iridescens, 124
 Nothria, 112-117, 123
 abyssalis, 3, 14, 117, 123, 354
 conchylega, 115
 hiatidentata, 3, 14, 117, 123, 127, 354
 iridescens, 3, 14, 117, 124, 125, 128, 130, 344
 lepta, 14, 117, 123, 125, 131, 354
 mexicana, 3, 14, 117, 126, 127, 130, 354
 pallida, 14, 127
 vibex, 14, 117, 128-130, 354, 471
 Notodasus, 246
 magnus, 18, 241, 246, 247, 337, 344, 523
 Notomastus, 244, 246, 248, 250
 (Clistomastus) tennis, 18, 241, 248, 338, 347, 356
 (Notomastus) abyssalis, 18, 241, 248, 249, 354, 523
 cinctus, 18, 241, 250, 251, 354, 521
 magnus, 18, 241, 251, 345, 356
 precocis, 18, 241, 249, 251, 252, 354
 precocis, 241, 249, 251, 252
 tennis, 248
 sp., 252
 nova, Apoprionospio, 192
 novaezealandiae, Eulalia, 51, 52
 obscurior, Amphicteis, 5, 19, 278, 283, 285, 351, 537
 ocellata, Pseudopotamilla, 333
 occidentalis, Anobothrus, 289
 ochotica, Melinna, 302, 303, 419
 octobranchus, Ilyphagus, 413
 oculata, Melinna, 418
 Paraonis gracilis, 16, 173, 183, 184, 350
 Pseudeurythoe, 39, 40
 oculifera, Pseudeurythoe, 39, 41
 oligodonta, Neanthes kerguelensis, 409
 Onuphidae, 3, 9, 10, 14, 112, 113, 140, 145, 341
 Onuphis, 112, 114-117, 130, 132
 eremita, 115
 hiatidentata, 123, 124, 127
 lepta, 3, 125, 126
 litabranchia, 3, 14, 117, 125, 126, 130, 131, 354

- nannognathus, 3, 14, 118, 130,
131, 354
- nebulosa, 14, 118, 132, 341,
347, 356, 473
- parva, 3, 14, 117, 132, 133, 345
- profundi, 3, 14, 118, 133, 354,
473
- vexillaria, 3, 14, 118, 134,
338, 347, 473
- sp., 134
- Opheliidae, 9, 17, 234, 238
- Orbiniidae, 9, 15, 162, 171
- ornatus, Petaloproctus, 18, 253,
266, 350
- orphnius, Amphiteis, 5, 19, 278,
283, 285, 286, 351, 535
- Oweniidae, 9, 18, 268, 271
- oxycephala, Glycera, 13, 99, 100,
103, 343
- oxypoda, Neanthes, 410
- pachychaeta, Ceratonereis, 68
- pacifica, Aedicira, 171, 174, 175
Ceratocephale loveni, 13, 65,
66, 346
Melinna, 419
Panthalis, 11, 29, 344
Rhamphobranchium, 412
Therochaeta, 17, 215, 231-233,
349, 416, 519
- pala, Samythella, 19, 276, 314-316,
356, 553
- pallida, Ammotrypane, 17, 235, 236,
349
Nothria, 14, 127
- pallidus, Spiophanes, 16, 186, 199,
200, 351
- palmata, Melinna, 417
Ninoc, 155, 156, 160
- panamensis, Haploscoloplos, 168,
169
Panthalis, 30
Polyodontes, 11, 29, 30, 344
- Panthalis, 29
pacifica, 11, 29, 344
panamensis, 30
- Pantothrix, 213, 214, 413
chilensis, 214, 413
- papillata, Flabelligella, 224
Pherusa, 413
- papillifera, Subadyte, 28, 29
- papillosa, Neanthes, 408
- papillosus, Ancistargis, 58
- Paradiopatra, 112, 113, 114, 115
fragosa, 113, 115
glutinatrix, 113
- Paradoneis, 171, 185
lyra, 171, 173, 185, 347
- paradoxa, Nephthys, 91
Nephthys, 13, 81, 91, 347
Paralacydonia, 12, 54, 339, 350
- Paralacydonia, 54
paradoxa, 12, 54, 339, 350
- Paranaitis, 52
polynoides, 12, 44, 52, 350
- Paranorthia, 112, 113, 115, 116,
135, 411
atlantica, 139, 411
brevicornuta, 116, 139, 411
fissurata, 14, 117, 135-139,
144, 354, 411, 475, 477
macrobranchiata, 139, 411
- Paraonidae, 9, 10, 15, 171, 186
- Paraonides, 172, 181, 182
cedroensis, 16, 173, 181, 182,
354
lyra, 185
neapolitana, 172, 182
nordica, 182
platybranchia, 182
- Paraonis, 172, 183
gracilis, 16, 172, 173, 183,
185, 347
oculata, 16, 173, 183, 184,
350
multibranchiata, 185
(Paraonides) lyra, 185
pynobranchiata, 16, 173, 184,
185, 354, 495
- Paraprionospio, 188, 189, 190
africana, 189
alata, 188
pinnata, 16, 187-190, 344
inaequibranchia, 189
treadwelli, 188, 189
- Paraxionice, 318, 319
artifex, 19, 317, 319-321,
354, 555
- parmata, Pherusa, 414
- Paronuphis, 112, 114, 116
abyssorum, 4, 14, 116, 139, 354
gracilis, 116
- parumdentata, Melinna, 418
- parva, Onuphis, 3, 14, 117, 132,
133, 345
Sigambra, 64
- paucibranchiata, Euphrosine, 12,
43, 350
Pseudeurythoe, 39, 40
- paucilamellata, Aglaophamus, 13, 81,
83, 84, 86, 351, 453
- Pectinariidae, 9, 19, 273, 274
- pectinifera, Ceratonereis, 68
- Peisidice, 30
sp., 11, 30, 31
- pellucida, Subadyte, 28, 29
- perfecta, Amage, 279, 417
- Petaloproctus, 266
ornatus, 18, 253, 266, 350
- Pherusa, 213, 214, 217, 225, 226,
412, 413
abyssalis, 17, 215, 226-228,
354, 414, 515
arenosa, 414
aspera, 415

- atentacula, 415
 bengalensis, 227, 228, 414
 capitata, 414
 capulata, 227, 414
 curvisetis, 415
 dubia, 413
 eruca, 227, 415
 indica, 227, 415
 falcata, 413
 grandiosa, 415
 gymnopapillata, 415
 havaica, 413
 heteropapillata, 227, 228, 415
 incerta, 415
 inflata, 17, 215, 228, 414
 kerguelarum, 413
 kinsemboanus, 414
 laevis, 414
 monilifera, 225, 227, 228, 415
 monroi, 414
 negligens, 415
 neopapillata, 413
 papillata, 413
 parmata, 414
 plumosa, 214, 413
 africana, 413
 rudis, 414
 saldahna, 414
 schmidtii, 413
 swakopiana, 414
 tenera, 413
 tumbensis, 415
 Phyllochaetopterus, 201
 limicolus, 16, 201, 202, 350
 sp., 202
 phyllocirrus, Heptaceras, 115
 Phyllocodidae, 9, 12, 44, 54
 pictus, Polyopthalmus, 236
 Pilargiidae, 9, 12, 55, 64
 Pilargis, 59, 60
 mirasetis, 12, 56, 59, 60,
 354, 437
 pinnata, Paraprionospio, 16, 187-190,
 344
 Prionospio, 188
 inaequibranchia,
 Paraprionospio, 189
 Pirakia, 53
 brunnea, 12, 44, 53, 54,
 354, 429
 punctifera, 54
 Piromis, 213-215, 288, 230, 415
 americana, 230, 415
 arenosus, 215, 230, 415
 bifidus, 230, 415
 gracilis, 230, 416
 hamocarens, 230, 416
 hospitis, 17, 215, 229-231,
 337, 344, 416, 517
 roberti, 230, 416
 trnpica, 230, 416
 Pista, 319, 321
 brevibranchia, 321
 brevibranchiata, 19, 317, 321,
 338, 347
 plana, Melinna, 19, 276, 304, 305,
 417, 547
 platybranchia, Paraonides, 182
 Platynereis, 80
 bicanaliculata, 13, 65, 80,
 337, 344
 plumosa, Pherusa, 214, 413
 africana, Pherusa, 413
 plumosus, Prionospio, 196, 197
 pluribranchiata, Brada, 17, 216,
 217, 352
 Stylarioides, 216
 pluto, Ilyphagus, 413
 Poecilochaetidae, 9, 16, 201
 Poecilochaetus johnsoni, 16, 201,
 339, 347
 Polycirrus, sp., 317, 322
 Polynoidae, 2, 9, 11, 23, 29
 polynoides, Anaitis, 52
 Paranaitis, 12, 44, 52, 350
 Polyodontes, 30
 panamensis, 11, 29, 30, 344
 Polyodontidae, 9, 11, 29
 Polyopthalmus, 236
 pictus, 236
 translucens, 17, 234, 236, 351
 posterobranchia, Aglaophamus, 83
 Praxillella, 266
 gracilis, 18, 254, 266, 267,
 338, 348
 trifila, 18, 254, 267, 351
 precocis, Notomastus, 241, 249, 251,
 252
 (Notomastus), 18, 354
 Prionospio, 186, 188-190, 192,
 193, 196
 anuncata, 16, 187, 193, 194,
 354, 499
 (Apoprionospio) vermillionensis,
 16, 187, 190-192, 354, 497
 bocki, 196, 197
 cirrifera, 16, 187, 194, 195,
 338, 348
 fallax, 194
 heterobranchia, 196
 newportensis, 196
 lobulata, 16, 187, 195-197,
 354, 501
 malmgreni, 16, 187, 194,
 196-198, 348
 dubia, 194
 pinnata, 188
 plumosus, 196, 197
 slishaensis, 194
 steenstrupi, 194
 malayensis, 194, 196, 197
 sp., 198
 producta wyvillei, Laetmonice, 11,
 20, 22

- profunda*, Melinna, 419
profundi, Glycera, 3, 13, 100-104,
 352, 356, 465
Nereis, 72, 74
Onuphis, 3, 14, 118, 133,
 354, 473
Pseudeurythoe, 38, 40
abyssalis, 12, 38-43, 355, 427
acarunculata, 38-40, 42
ambigua, 38, 39, 40
annulata, 38, 39, 40, 41
canariensis, 39, 41
dubia, 38
hirsuta, 39, 40, 41
microcephala, 39, 40
minuta, 39, 40, 42
oculata, 39, 40
oculifera, 39, 41
paucibranchiata, 39, 40
spiralis, 39, 40
Pseudoclymene longiceps, 261
Pseudopotamilla, 333
intermedia, 20, 326, 333, 334,
 345, 356
occelata, 333
splendida, 332, 333
pulchra, Ninoc, 155, 156, 160
punctifera, Pirakia, 54
pupa, Trivisia, 237, 238
pycnobranchiata, Paraonis, 16, 173,
 184, 185, 354, 495
pygidialis, Myriochele, 18, 269,
 270, 353
pygmaeus, Apoprionospio, 192
pygodaetyla, Cossura, 207
quadribranchiata, Egamella, 19,
 276, 296, 297, 352, 543
racemosa, Sthenolepis, 12, 31,
 34-36, 355, 425
ramosa, Ceratonereis, 68
ramosus, Asychis, 18, 253, 258, 352
reducta, Neanthes, 409
reticulata, Enclymene, 18, 254,
 260, 261, 346, 355, 529
Rhamphobranchium, 112-114, 116,
 411
agassizi, 116, 411
bipes, 411
brevibranchiata, 411
capense, 411
chuni, 411
crystalbalensis, 411
diversosetosum, 411
ehlersi, 411
hartmanae, 411
longisetosum, 411
maculatum, 412
pacifica, 412
vernigreni, 412
Rhodine, 267
bitorquata, 18, 253, 267, 268
 348, 357
sp., 268
roberti, Piromis, 230, 416
robusta, Sigambra, 55, 62
robustus, Haploscoloplos, 169
roosevelti, Neanthes, 409
rostrata, Cossura, 17, 208-212,
 352, 503, 505
rudis, Pherusa, 414
ruficeps, Neanthes, 410
rugosa, Fauveliopsis, 17, 216,
 220-222, 352, 511
Sigambra, 12, 55, 56, 60, 62,
 355, 439
Sabellariidae, 9, 19, 271
Sabellidae, 9, 20, 325, 334
Sabellides, 279
delus, 5, 278
Sabellinae, 325, 331
sacculata, Laonice, 16, 186-188,
 338, 346
Spionides, 187
sakhalinensis, Neanthes, 410
saldahna, Pherusa, 414
Samythella, 312
bathycola, 314
elongata, 314
interrupta, 19, 276, 313, 314
 316, 355, 553
neglecta, 314
pala, 19, 276, 314-316, 356, 553
sanguinea, Marphysa, 56
sarsi, Maldane, 18, 253, 263, 265,
 336, 347
Scalibregma, 234
inflatum, 17, 234, 348, 357
Scalibregmidae, 9, 17, 234
Scalisetosus, 27
scaphobranchiata, Amphiteis, 19,
 278, 282, 283, 286, 287, 345, 537
schmidtii, Pherusa, 413
schmitti, Califfa, 165
Sciommella, 322
japonica, 20, 317, 322, 323,
 338, 348, 357
Scoloplos elongata, 166
kerguelensis, 166
(Leodamas) mazatlanensis, 15,
 163, 169-171, 355, 491
tribulosus, 170, 171
scotiace, Ceratonereis, 68
scotica, Amage, 417
sculpta, Amage, 281, 417
scutata, Amage, 19, 277, 280,
 281, 345, 417, 533
Sternaspis, 239
scutigera, Therochaeta, 233, 416
scutigeroideis, Therochaeta, 233, 416
segregata, Eunice, 4, 14, 140,
 141, 143, 144, 350
Leodice, 135, 143, 144
semisegregata, Eunice, 4, 14, 140,
 141, 143, 144, 145

- seridentata, *Neanthes*, 410
 setosa, *Chaetozona*, 16, 203, 346
 Sigambra, 12, 56, 62, 64,
 355, 435
 sibogae, *Amage auricula*, 417
 Clymaldane, 259, 260
Sigalionidae, 9, 11, 31, 38
Sigambra, 60, 64
 hanaokai, 64
 parva, 64
 robusta, 55, 62
 rugosa, 12, 55, 56, 60, 62,
 355, 439
 setosa, 12, 56, 62, 64, 355, 435
 tentaculata, 64
sigiformis, *Eulalia*, 50
sima, *Cossura*, 17, 207, 212, 213,
 352, 505, 507
similis, *Aricidea*, 16, 173, 179-181,
 349, 493
 Asychis, 257
 Fabrisabella, 20, 326, 329,
 330, 352, 559
 Maldanc, 5
similisetis, *Sphaerephesia*, 13,
 94, 97, 98, 99, 463
simplex, *Aricidea suecica*, 178
sinicolens, *Cirrattulus*, 5, 16, 203,
 204, 352
sishaensis, *Prionospio*, 194
Sosane, 288, 289
 sulcata, 289
soyeri, *Cossura*, 207
spargens, *Sthenolepis*, 12, 31, 35,
 36, 355, 423
Sphaerephesia, 97
 longisetis, 13, 94, 97-99, 461
 similisetis, 13, 94, 97-99, 463
sphaerocephala, *Eulalia*, 46
Sphaerodoridae, 9, 13, 93
Sphaerodoropsis sphaerulifer, 345
Sphaerodorum, 97
 brevicapitis, 96
sphaerulifer, *Sphaerodoropsis*, 345
Spionidae, 9, 10, 16, 186, 200
Spionides sacculata, 187
Spiophanes, 186, 198, 199
 anoculata, 16, 186, 198, 355
 fimbriata, 16, 186, 199, 355
 pallidus, 16, 186, 199, 200, 351
spiralis, *Pseudeurythoe*, 29, 40
splendida, *Megalomma*, 20, 332,
 333, 344
 Pseudopotamilla, 332, 333
squamatus, *Lepidonotus*, 11, 23,
 26, 27, 346, 356
squamosa, *Nephtys*, 92
 Nephtys, 3, 13, 81, 92, 342,
 347, 356, 453
Stannoreis annulatus, 162
steenstrupi, *Prionospio*, 194
 malayensis, *Prionospio*, 194,
 196, 197
Sternaspidae, 5, 9, 17, 238
Sternaspis, 238
 fossor, 17, 238, 239, 348
 major, 5
 scutata, 239
Sthenelais, 32
 tertiaglabra, 11, 31, 32, 344
Sthenelanelia, 33
 uniformis, 11, 31, 33, 344
Sthenolepis, 33, 35
 arcolata, 11, 31, 33, 35, 36,
 355, 423
 izuensis, 35, 36
 javanica, 35, 36
 magellanica, 35, 36
 racemosa, 12, 31, 34-36, 355,
 425
 spargens, 12, 31, 35, 36, 355,
 423
 tetragona, 35, 36
Streblosoma, 323
 crassibranchia, 20, 317, 323,
 338, 348
stricta, *Hyalinoecia*, 3, 14, 117,
 120, 122, 124, 352
 tubicola, 120
stroemi, *Terebellides*, 20, 324,
 325, 336, 348, 357
Stylarioides, 217, 225
 pluribranchiata, 216
Subadyte, 27, 28
 mexicana, 11, 23, 27, 29,
 349, 423
 mjoebergi, 28, 29
 papillifera, 28, 29
 pellucida, 28, 29
succinea, *Neanthes*, 410
 suecica simplex, *Aricidea*, 178
 sulcata, *Sosane*, 289
 sutrufa, *Aglaophamus*, 13, 81, 83,
 84, 87, 89, 351, 453, 455
swakopiana, *Pherusa*, 414
Syllidae, 9, 10, 12
tahlsapensis, *Neanthes*, 409
tecton, *Hyalinoecia*, 3, 14, 116,
 118, 121, 122, 353, 469
tenella, *Megalomma*, 326
tenera, *Pherusa*, 413
tentaculata, *Melinna*, 19, 276, 305-
 307, 353, 418, 549
 Sigambra, 64
tenuis, *Notomastus*, 248
 (*Clistomastus*), 18, 241,
 248, 338, 347, 356
Terebellidae, 5, 9, 19, 316, 324
Terebellides, 324
 stroemi, 20, 324, 325, 336,
 348, 357
tertiaglabra, *Sthenelais*, 11, 31,
 32, 344

- tesselata*, *Glycera*, 13, 99, 100, 104,
 105, 342, 346, 356
tetragona, *Sthenolepis*, 35, 36
Tharyx, 205
 monilaris, 17, 203, 205, 338,
 348, 357
 multifilis, 17, 203, 205, 206,
 338, 348, 357
Thelepus, 323
 hamatus, 20, 317, 323, 324,
 348, 357
Therochaeta, 213, 215, 231-233, 416
 collarifera, 215, 232, 233, 416
 coronata, 233, 416
 flabellata, 232, 233, 416
 pacifica, 17, 215, 231-233,
 349, 416, 519
 scutigera, 233, 416
 scutigeroidea, 233, 416
torta, *Nereis*, 79
translucens, *Polyopthalmus*, 17,
 234, 236, 351
Travisia, 237
 brevis, 17, 235, 237, 338, 348
 foetida, 17, 235, 237, 238,
 348, 519
 pupa, 237, 238
treadwelli, *Parapriospio*, 188, 189
tribulosus, *Scoloplos* (*Leodamas*),
 170, 171
Trichobranchidae, 9, 20, 324
trifida, *Praxillella*, 18, 254, 267, 351
trilobatus, *Anobothrus*, 289
Trophonia inflata, 228
tropica, *Piromis*, 230, 416
tubicola, *Hyalinoecia*, 115, 120
 stricta, *Hyalinoecia*, 120
tumbensis, *Pherusa*, 415
tumida, *Amage*, 417
typhla, *Neanthes*, 409
uncopalea, *Amphiteis*, 5, 19, 277,
 282, 283, 285, 287, 288, 351, 515
unifasciata, *Neanthes*, 409
uniformis, *Sthenelanelia*, 11, 31,
 33, 344
uruguayi, *Melinna*, 418
vaali, *Neanthes*, 409
vasculosa, *Fabrisabella*, 330
vermillionensis, *Ceratonereis*, 13,
 65, 66, 68, 352, 441
 Priospio (*Apopriospio*),
 16, 187, 190-192, 354, 497
verngreni, *Rhamphobranchium*, 412
verrillii, *Neanthes*, 410
verrucosa, *Ancistargis*, 12, 56-59,
 351, 435
 Brada, 5, 17, 216, 217, 352
versicolor, *Lepidonotus*, 11, 23,
 27, 344
vexillaria, *Omphis*, 3, 14, 118,
 134, 338, 347, 473
vibex, *Nothria*, 14, 117, 128-130,
 354, 471
virens, *Neanthes*, 71, 408
viridis, *Chloecia*, 2
vitabunda, *Neanthes*, 409
vittata, *Eunice*, 4, 14, 140, 141,
 145, 343
willeyi, *Neanthes*, 410
wyvillei, *Ilyphagus*, 413
 Laetmonice producta, 11, 20, 22
zonata, *Nereis*, 13, 65, 80, 344

