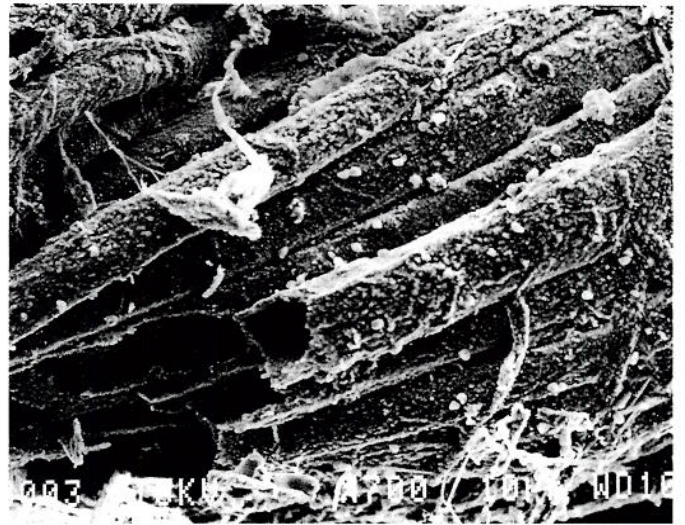
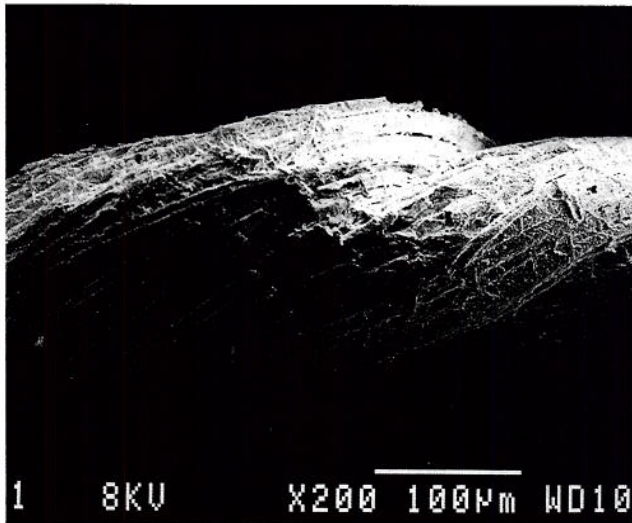


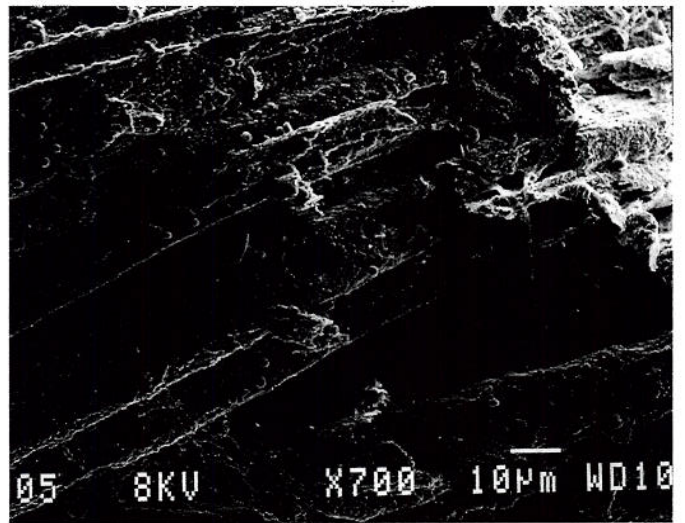
A. Woven textile from the coffin (sample 2003-Tx-1). Scanning electron photomicrograph (SEM) showing plain weave (tabby) with microbial debris and mechanical damage.



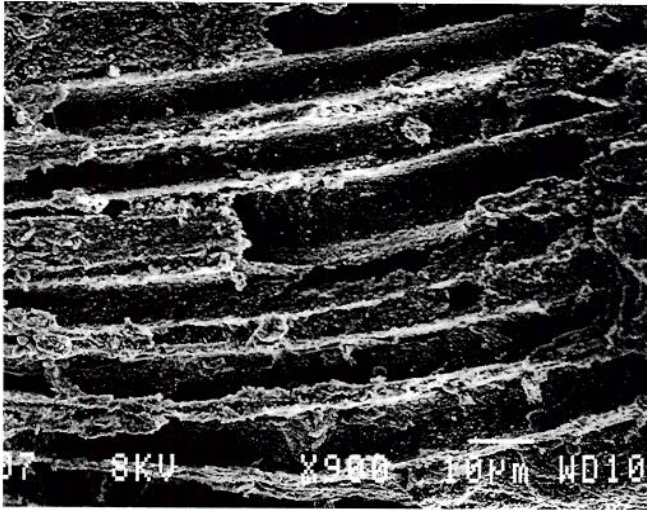
B. Woven textile from the coffin (2003-Tx-1). Detail of individual fibers within a single yarn (SEM).



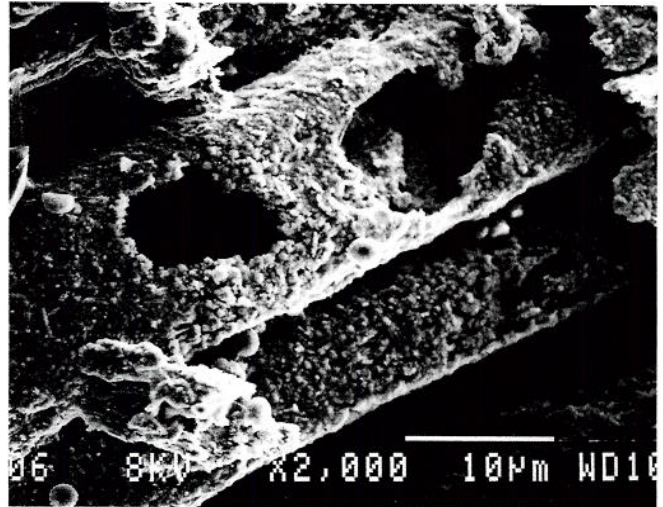
C. Woven textile from the coffin (2003-Tx-1). Detail of a single yarn, after solvent cleaning to remove microbial debris (SEM).



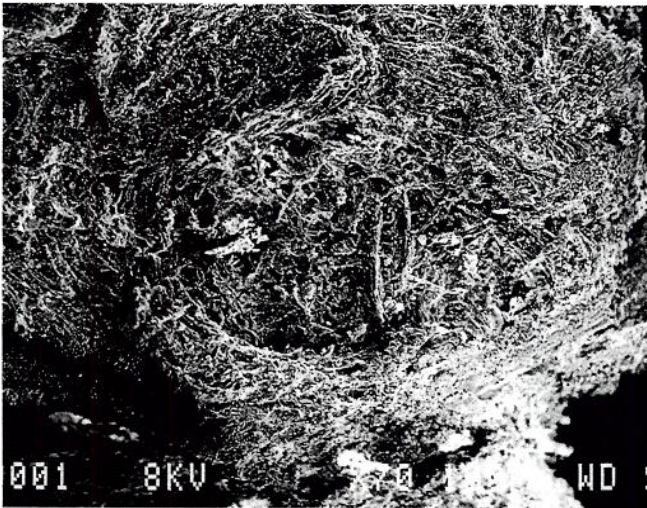
D. Woven textile from the coffin (2003-Tx-1). Evidence of sheath remaining: detail of individual fibers within a single yarn after solvent cleaning (SEM).



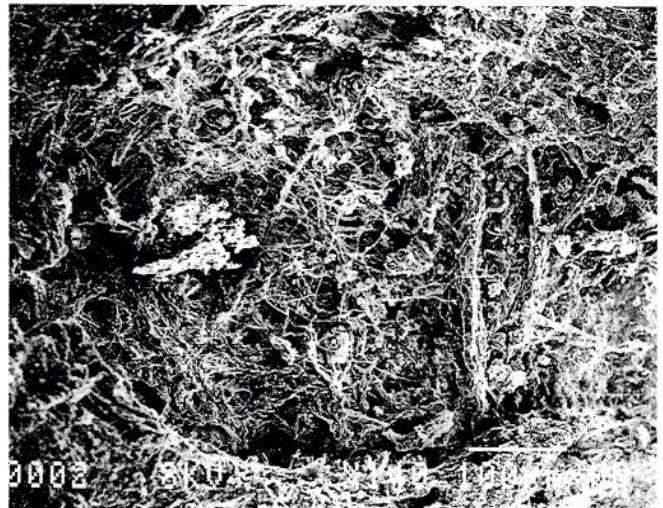
A. Woven textile from the coffin (2003-Tx-1). Hollow core of extant fiber shape: detail of damaged condition of individual fibers (SEM).



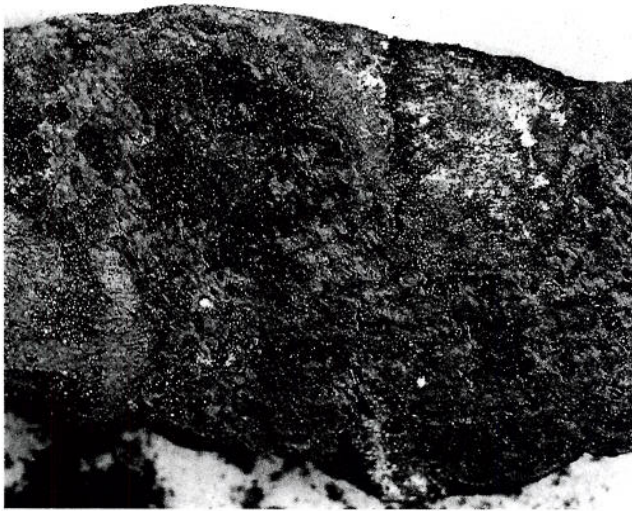
B. Woven textile from the coffin (2003-Tx-1). Non-fibrous surface of individual fibers (SEM).



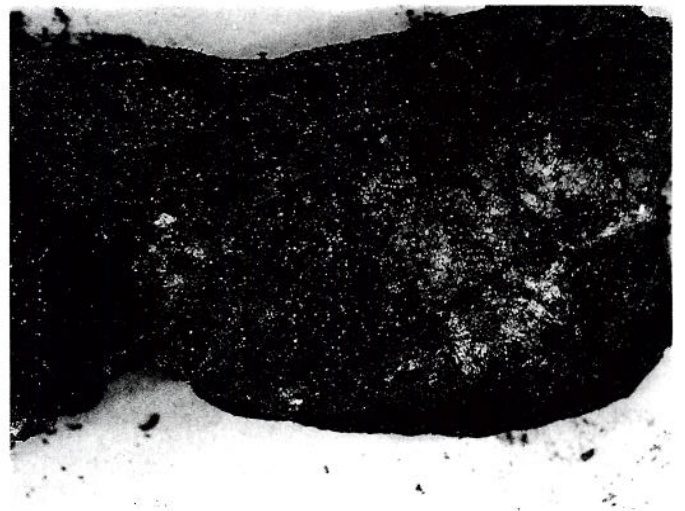
C. "Mattress" material from the coffin (2003-Tx-5). Mass on surface (SEM).



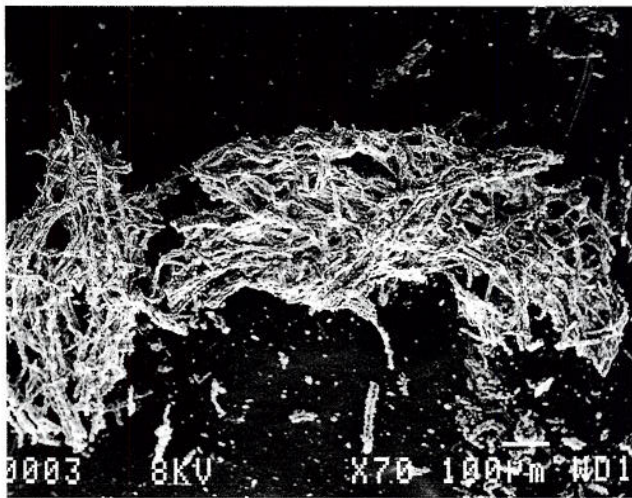
D. "Mattress" material from the coffin (2003-Tx-5). Detail of Plate 154C, indicating microbial origins of fine strands (SEM).



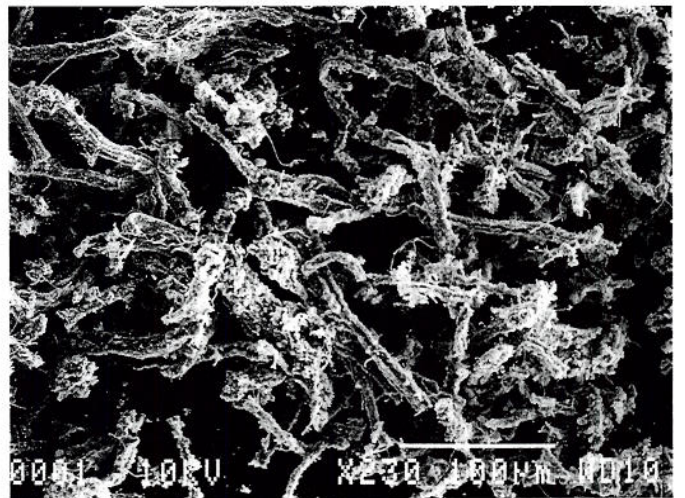
A. Cushion or upholstery on "stool #2" from the northeast corner of the tomb (2003-Tx-6). Detail of two layers on the upper surface, with fragments and impressions of the fine threads.



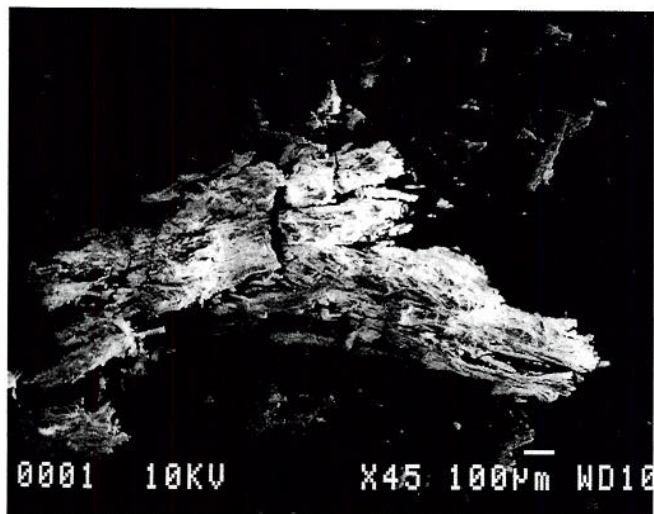
B. Cushion or upholstery on "stool #2" from the northeast corner of the tomb (2003-Tx-6). Detail of extant woven structure on the underside. The cording that was once strung across the seat stretchers of the stool is also visible on this sample.



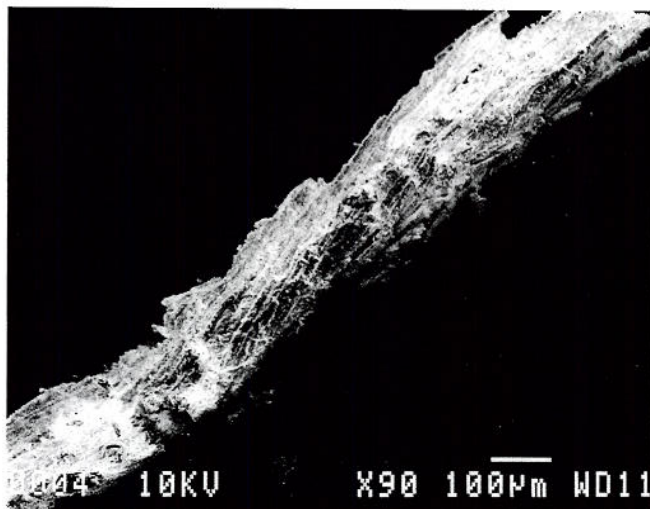
C. "Bag" on "stool #2," northeast corner (2003-Tx-7). Fine dark yarn of the fabric (SEM).



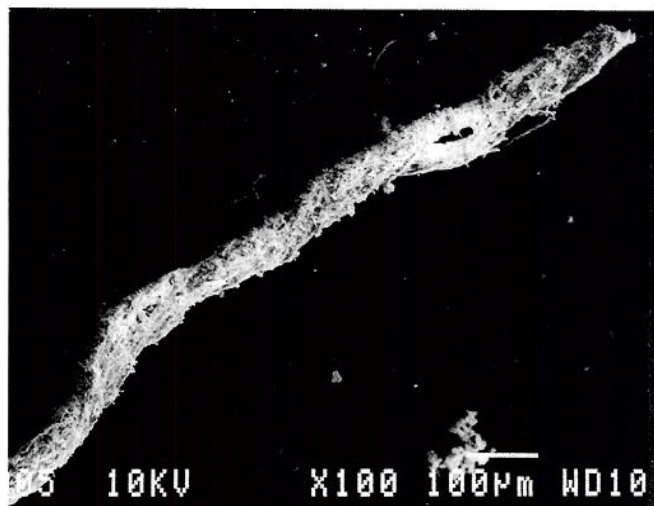
D. "Bag" on "stool #2," northeast corner (2003-Tx-7). Detail of Plate 155C, showing the fragmentary and degraded condition of the fibrous mass (SEM).



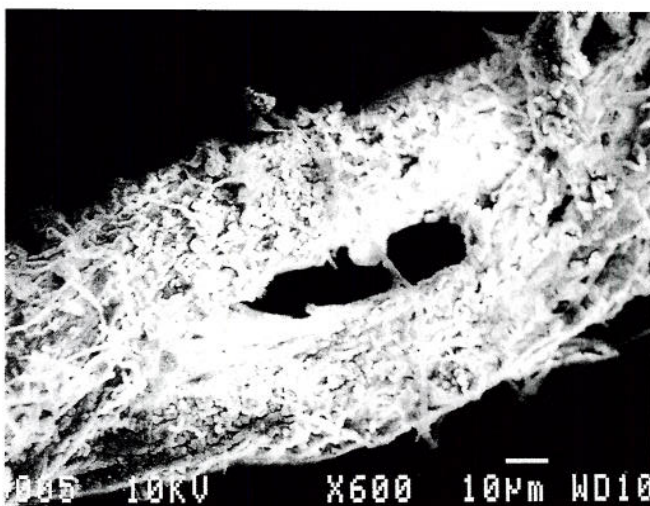
A. "Bag" on "stool #2," northeast corner (2003-Tx-8, front). Detail, showing the tendency of the dark fibers to crack, a property of the degradation of fiber (SEM).



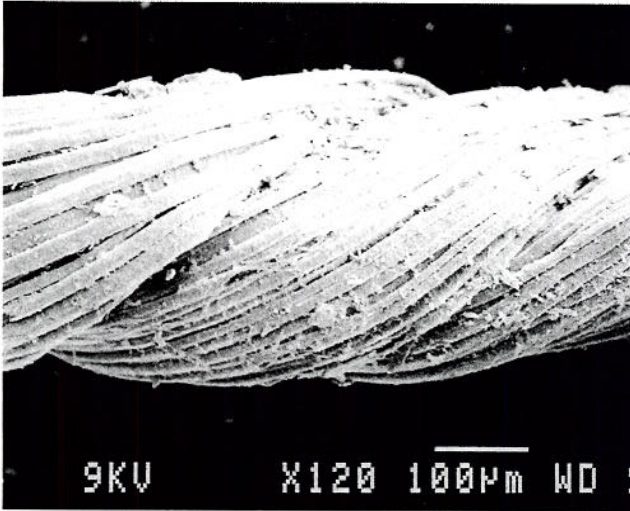
B. "Bag" on "stool #2," northeast corner (2003-Tx-8, front). Detail of a single yarn, an amalgamated mass (SEM).



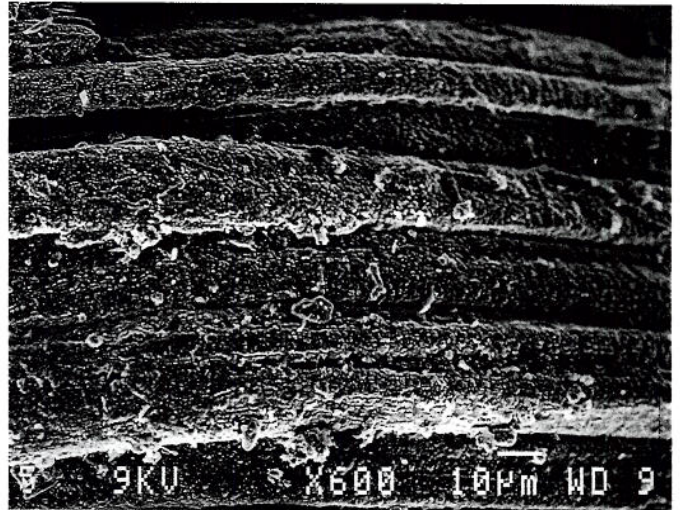
C. "Bag" on "stool #2," northeast corner (2003-Tx-8, back). Yarn from a second fabric on the fragment (SEM). This fabric is tan in color and a balanced plain weave. The surface is quite different from that of the yarn shown in Plate 156B.



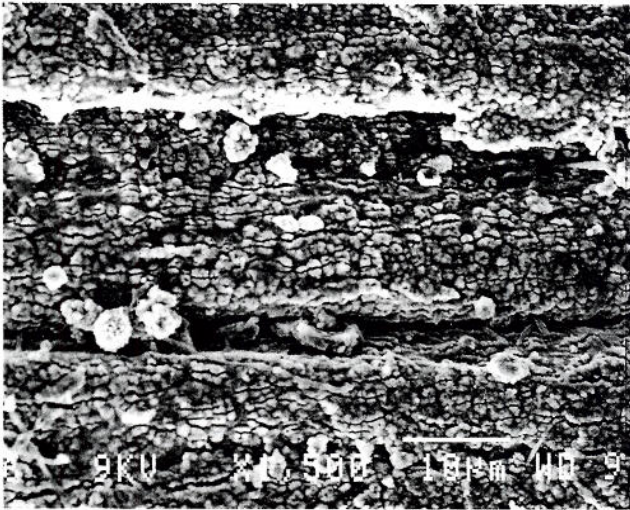
D. "Bag" on "stool #2," northeast corner (2003-Tx-8, back). Detail of Plate 156C showing the tan yarn, which has a coagulated and coated surface (SEM).



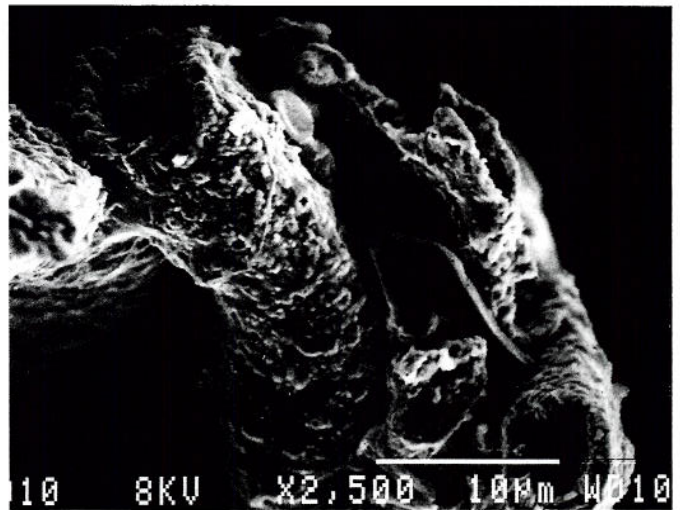
A. Cloth from floor behind serving stand A (2003-Tx-11, Yarn #1). Example of the finely spun yarn found in the cache of this sample, after the removal of surface debris by solvent cleaning (SEM).



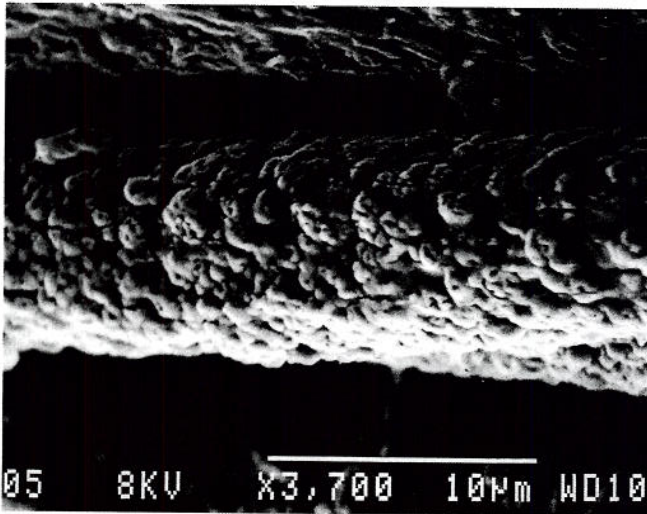
B. Cloth from floor behind serving stand A (2003-Tx-11, Yarn #1). Detail of the finely spun yarn shown in Plate 157A (SEM).



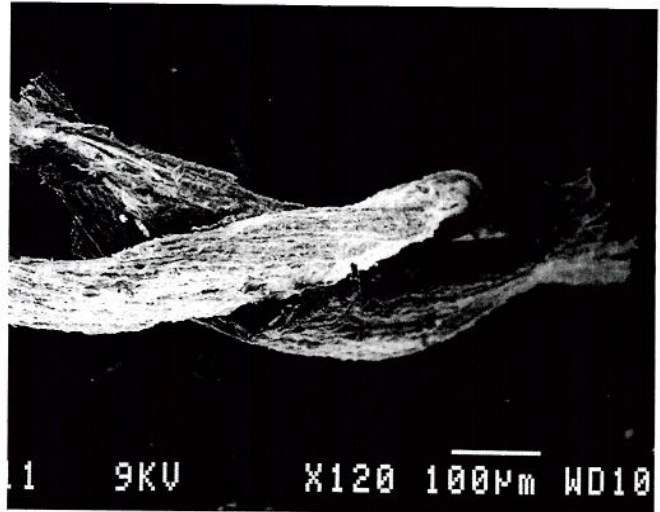
C. Cloth from floor behind serving stand A (2003-Tx-11, Yarn #1). The fibers of the smooth strands, with coated surface (SEM).



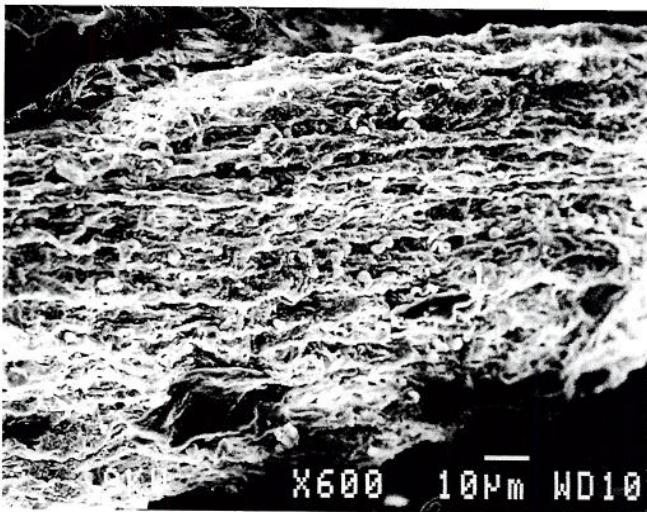
D. Cloth from floor behind serving stand A (2003-Tx-11, Yarn #1). The fibers of the smooth strands are seen to be hollow, with coated surface (SEM).



A. Cloth from floor behind serving stand A (2003-Tx-11, Yarn #1). Detail of Plate 157B, showing the longitudinal surface of the yarn's fiber, which has a molten, melted, non-fibrous appearance (SEM).



B. Cloth from floor behind serving stand A (2003-Tx-11, Yarn #2). Example of dark (black) yarn found in the cache of this sample, after the removal of surface debris by solvent cleaning (SEM).



C. Cloth from floor behind serving stand A (2003-Tx-11, Yarn #2). Detail of a strand of dark yarn shown in Plate 158B (SEM).



D. Cloth from floor behind serving stand A (2003-Tx-11, Yarn #2). Detail of Plate 158C, showing evidence of microbial activity (SEM).