

Supporting information

Solid Digestion of Demineralized Bone as a Method to Access Potentially Insoluble Proteins and Post-translational Modifications

Timothy P. Cleland^{1*}

¹Museum Conservation Institute, Smithsonian Institution, Suitland, MD 20746, USA

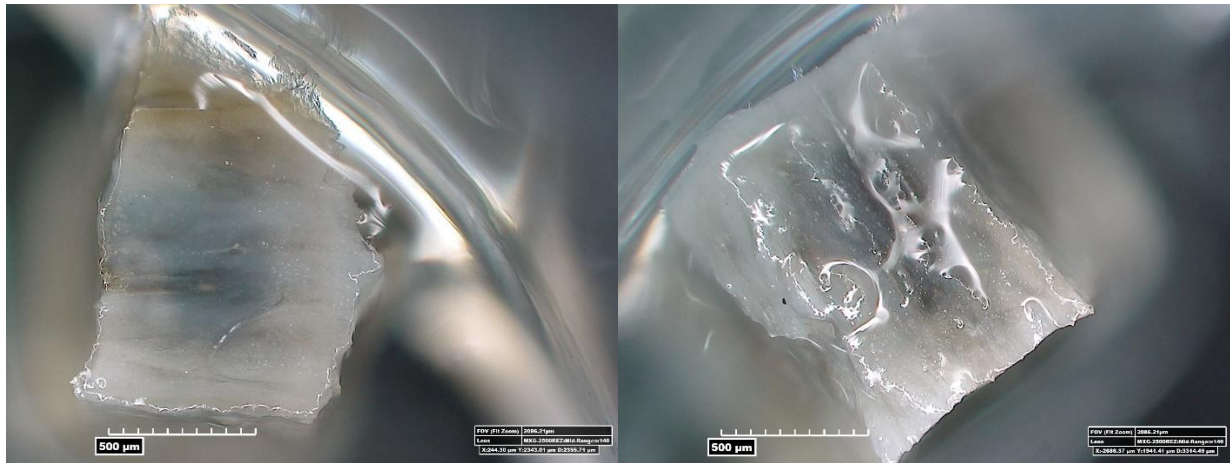


Figure S1. Von Kossa stained demineralized dog bone showing minimal or no retained calcium. The core shows some staining, though this may be the result of residual Ca-EDTA complex trapped within the bone piece.