

DESCRIPTION OF A NEW SPECIES OF COMMENSAL CRAB.

BY MARY J. RATHBUN.

The crab here described as new was submitted to me for determination by Dr. H. A. Pilsbry. It differs from other American species in its great breadth, and in the form of the maxillipeds, the carpal and propodal segments of which are unusually short.

Pinnotheres strombi sp. nov.

Description of adult ♀.—Carapace nearly one and a half times as broad as long, oblong, sides parallel, corners rounded; dorsal surface curving down toward the margins, smooth and naked; integument very thin and easily wrinkled.

Front less than one-fourth width of carapace, strongly bent down, margin forming an oblique angle at middle.

Orbits suborbicular, eyes partly visible in dorsal view.

Antennules nearly horizontal.

Outer maxillipeds oblique, the penult and antepenult joints short and stout, the last joint small and almost terminal.

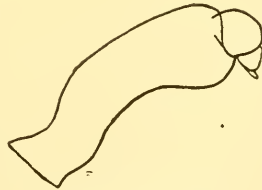
Chelipeds small, rounded; upper margin of propodus convex, lower margin sinuous; fingers deflexed, about half as long as palm, stout, fitting close together, tips sharp and crossing.

Second pair of ambulatory legs a little the longest, first pair stoutest, fourth pair much shorter and narrower than the other three. Dactyli short, strongly curved, stout at base, tapering to slender horny tips.

Abdomen as wide as carapace, and about as long as wide.



P. strombi. Dorsal and ventral views of type, ♀, × 2.



Outer maxilliped, much enlarged

Edge of front, anterior margin of merus of first three ambulatories, and lower margin of carpus of first ambulatory, fringed with short dense pubescence, as are also the lower surface of the carapace and the edge of maxillipeds and abdomen.

Dimensions.—Width of carapace, 9.6 mm.; length, 6.6 mm.

Type locality.—Taken from a living *Strombus pugilis* Linnæus, at Clearwater Harbor, Florida, by Mr. H. S. Colton, 1905; one female. Type in Museum of the Academy, No. 1,629 of the collection of Crustacea.