

Tupper 4pm seminar

Tuesday, January 13, 4PM
seminar speaker will be Katie McDonald, University of Washington
Passive stability, upward mobility, and the ecology of planktonic marine embryos

Bambi seminar

Please check your e-mails for information on the next Bambi seminar on BCI.

Arrivals

Heinrich G. Krause, Heinrich-Heine University Duesseldorf, to continue collaborative research at STRI with Klaus Winter, at Tupper.

Damian José Ramirez García, Universidad del Magdalena, Colombia, to work as an intern in the project “Stress behavior and social organization in leaf-cutter ants” with Bill Weislo, on BCI.

Departures

Ira Rubinoff, William F. Laurance, S. Joseph Wright, Helene Muller-Landau and Beth King to Washington DC, to participate in the Tropical Extinction Crisis Symposium. Laurance will also give a seminar at the Smithsonian Migratory Bird Center.

Carla Chizmar, Eva Garen, Ana María Martínez, Miguel Tang Tuesta and Lissy Tapia, to Santiago de Chile, to attend the conference “2009 Conservation Leadership Dialogue on Conservation Capital in the Americas” organized by David Rockefeller Center for Latin American Studies of Harvard University/ Universidad Austral de Chile/ Lincoln Institute of Land Policy.



Smithsonian Tropical Research Institute, Panamá

www.stri.org

January 9, 2009

New arrivals in 2008

Four new permanent employees joined STRI during 2008. With the establishment of the Environmental Leadership Training Initiative (ELTI), Eva Garen accepted the position of Neotropical Training Program coordinator and Carla Chizmar, who previously assisted botanist Mireya Correa, was appointed as Neotropical Training Program coordinator assistant.

ELTI is a joint program that combines the unique strengths of STRI and the Yale School of Forestry & Environmental Studies to enhance environmental management and leadership in the tropics by offering cutting-edge learning and networking opportunities aimed at improving biodiversity conservation and human welfare. Social ecologist

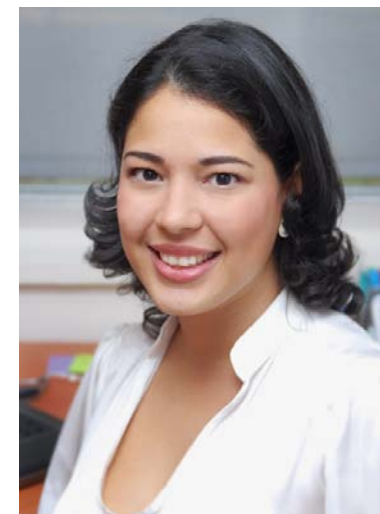
Eva Garen obtained her Ph.D. at the Yale University School of Forestry and Environmental Studies with the dissertation “Negotiating sustainable development: an ethnographic appraisal of the Bay Islands Environmental Management Project (Honduras, Mesoamerican Caribbean Reef).” At ELTI, she coordinates courses, workshops, conferences and symposia that introduce participants to novel conservation concepts,

strategies and opportunities and equips them with skills and technical tools to plan, implement, monitor and evaluate conservation efforts and success. Through these events, ELTI also promotes the exchange of information, knowledge and experiences. Garen coordinated the recently held congress “Biofuels under the lens of experts” and the subsequent meeting with experts from STRI, Yale, the academic and private sectors and non-government organizations, to address important issues regarding the regional status of the biofuel industry.

Carla Chizmar, a botanist from the University of Panama, supports the Training Program in the design and development of a series of events to strengthen the capabilities of decision makers and field technicians on biodiversity conservation in a landscape level. She also elaborates technical reports and the proceedings of every event, and produces information packages necessary to these activities. Carla was also involved with all aspects of the Biofuels meetings, gave a presentation on biofuels in Central America. Before joining ELTI, Chizmar worked in the Latin American Plant Initiative with Mireya Correa, and has contributed for



Eva Garen, ELTI



Carla Chizmar, ELTI

publications in ethnobotany, soon to be published with Correa.

The Office of Information Technology selected Marisol Lopez to fill the position of STRI webmaster. Lopez has a bachelor in Graphic Design

New publications

Baer, Boris, Dijkstra, Michiel B., Mueller, Ulrich G., Nash, David R., and Boomsma, Jacobus J. 2009. "Sperm length evolution in the fungus-growing ants." *Behavioral Ecology* 20(1): 38-45.

Basset, Yves, Missa, Olivier, Alonso, Alfonso, Miller, Scott E., Curletti, Gianfranco, De Meyer, Marc, Eardley, Connal, Lewis, Owen T., Mansell, Mervyn W., Novotny, Vojtech, and Wagner, Thomas. 2008. "Changes in arthropod assemblages along a wide gradient of disturbance in Gabon." *Conservation Biology* 22(6): 1552-1563.

Best, Mairi M.R. 2008. "Contrast in preservation of bivalve death assemblages in siliciclastic and carbonate tropical shelf settings." *Palaios* 23(12): 796-809.

Christin, Pascal-Antoine, Salamin, Nicolas, Kellogg, Elizabeth A., Vicentini, Alberto, and Besnard, Guillaume. 2009. "Integrating phylogeny into studies of C4 variation in the grasses." *Plant Physiology* 149(1): 82-87.

Cochrane, Mark A., and Laurance, William F. 2008. "Synergisms among fire, land use, and climate change in the Amazon." *Ambio* 37(7-8): 522-527.

Espino, C.I., Gomez, T., Gonzalez, G., do Santos, M.F. Brazil, Solano, J., Sousa, Octavio E., Moreno, N., Windsor, Donald M., Ying de Turner, Argentina, Vilchez, S., and Osuna, A. 2009. "Detection of *Wolbachia* bacteria in multiple organs and feces of the triatomine insect *Rhodnius pallescens* (Hemiptera, Reduviidae)." *Applied and Environmental Microbiology* 75(2): 547-550.

from the University of Panama and a degree in Interactive Media Design from the Art Institute of Fort Lauderdale. She won the best portfolio of interactive media in 2004, when she graduated in the US. Before coming to STRI she worked at Talingo, Publicuatro and The Alten Group. She handles multiple media including photography and photo restoration, video and sound editing, as well as all tools related to web managing. At STRI, Marisol will design and develop cutting-edge web sites to build and connect the international field of science with the design of the Institution web sites.

Director emeritus Ira Rubinoff and associate director for Administration and Finance Georgina de Alba selected Fabiola Jenkins de Hoyos as their administrative assistant. Jenkins has a bachelor's degree in Travel and Tourism Management from Universidad Católica Santa María La Antigua. She also has ten years of management experience within the airline industry and with consumer products. At STRI, Jenkins will participate actively in the management of the offices of the Director Emeritus and the Director of Administration & Finance by performing routine administrative clerical work, and travel arrangements.

Cuatro nuevos empleados permanentes se unieron a STRI en 2008. Con la creación de la Iniciativa de Capacitación en Liderazgo Ambiental (ELTI, por sus siglas en inglés) Eva Garen aceptó la posición de coordinadora del Programa Neotropical de Capacitación y Carla Chizmar, quien asistió previamente a la Profesora en Botánica Mireya Correa en STRI fue seleccionada como asistente del Programa de Capacitación Neotropical.

ELTI es un programa que combina las fortalezas y la

experiencia de STRI y la Escuela de Silvicultura y Estudios Ambientales de la Universidad de Yale, con el fin de aportar al fortalecimiento de la gestión y el liderazgo ambiental en el trópico, ofreciendo oportunidades de capacitación y desarrollo profesional a individuos cuyas decisiones y acciones influyen sobre la conservación de la biodiversidad y el bienestar humano.

Eva Garen coordina cursos, talleres, conferencias y simposios para dar a conocer los conceptos de conservación, estrategias y oportunidades a los participantes de estos eventos y equiparlos con las habilidades y herramientas para planear, implementar, monitorear y evaluar los esfuerzos y éxitos en conservación. A través de estos eventos, ELTI promueve el intercambio de información, conocimientos y experiencias. Garen organizó recientemente el congreso "Biocombustibles bajo la lupa de los expertos" y la reunión subsiguiente con un grupo de expertos de STRI, Yale y el sector académico y privado, y representantes de las organizaciones no gubernamentales, para discutir el estatus de la industria de biocombustibles en la región.

Carla Chizmar, ofrece apoyo al Programa de Capacitación en el diseño y desarrollo de una serie de eventos para fortalecer las capacidades de tomadores de decisiones y técnicos de campo en la conservación de la biodiversidad a nivel de paisaje. Elaboro informes técnicos y las memorias de cada evento y produce paquetes de información necesarios para estas actividades. Antes de sumarse a ELTI, Chizmar trabajó en la Iniciativa de Plantas Latinoamericanas con Mireya Correa y ha contribuido en publicaciones de etnobotánica, que pronto saldrán a la luz.

La Oficina de Infomática seleccionó a Marisol López para



Marisol López, OIT

llenar la posición de webmaster. López tiene una licenciatura en Diseño Gráfico de la Universidad de Panamá y un grado en Diseño de Medios Interactivos del Instituto de Arte de Fort Lauderdale. Ganó el primer lugar por el mejor portafolio en medios interactivos en 2004, cuando se graduó en los EU. Antes de venir a STRI trabajó en Talingo, Publicuatro y The Alten Group. Maneja medios múltiples incluyendo fotografía y restauración fotográfica, edición de video y sonido, así como todas las herramientas relacionadas al manejo de páginas de web. En STRI, Marisol diseñará y desarrollará sitios de web con tecnología de punto para construir y conectar el campo internacional de la ciencia con el diseño de los sitios web de la Institución.



Fabiola Jenkins, Director's Office

More publications

Guarnizo, Carlos E., Amezquita, Adolfo, and Bermingham, Eldredge. 2009. "The relative roles of vicariance versus elevational gradients in the genetic differentiation of the high Andean tree frog, *Dendropsophus labialis*." *Molecular Phylogenetics and Evolution* 50(1): 84-92.

Hubbell, Stephen P., He, Fangliang, Condit, Richard, Borda-de-Agua, Luis, Kellner, James, and ter Steege, Hans. 2008. "Reply to Feeley and Silman: Extinction risk estimates are approximations but are not invalid." *Proceedings of the National Academy of Sciences Online*: -.

Jha, Shalene, and Dick, Christopher W. 2008. "Shade coffee farms promote genetic diversity of native trees." *Current Biology* 18(24): R1126-R1128.

Jimenez-Romero, Carlos E., Ortega-Barria, Eduardo, Arnold, Anne Elizabeth, and Cubilla-Rios, Luis. 2008. "Activity against *Plasmodium falciparum* of lactones isolated from the endophytic fungus *Xylaria sp.*" *Pharmaceutical Biology* 46(10-11): 700-703.

Kim, Tae Won, Christy, John H., Dennenmoser, Stefan, and Choe, Jae C. 2009. "The strength of a female mate preference increases with predation risk." *Proceedings of the Royal Society B: Biological Sciences* 276: 775-780.

Martinez-Luis, Sergio, Della-Togna, Gina, Coley, Phyllis D., Kursar, Thomas A., Gerwick, William H., and Cubilla-Rios, Luis. 2008. "Antileishmanial constituents of the Panamanian endophytic fungus *Edenia sp.*" *Journal of Natural Products* 71(12): 2011-2014.

El director emérito de STRI Ira Rubinoff y Georgina de Alba, directora asociada para Administración y Finanzas escogieron a Fabiola Jenkins como asistente administrativa. Jenkins tiene una licenciatura en Administración de Viajes y

turismo de la Universidad Católica Santa María La Antigua. También posee diez años de experiencia dentro de la industria de aerolíneas y con productos de consumo, y dos años de experiencia como asistente administrativa. En

STRI, participará activamente en la administración de las oficinas del Director Emérito de STRI y de la Directora asociada Administración y Finanzas, llevando a cabo trabajos de rutina administrativos y preparativos para viajes.



The debate: 2009 Tropical Extinction Symposium at the Smithsonian Institution

Will the rainforests survive?

New threats and realities in the tropical extinction crisis, will take place on Monday, January 12, from 1-6:30pm, at Baird Auditorium, National Museum of Natural History, SI, Washington DC.

There is broad agreement that tropical landscapes are changing at unprecedented rates around the world. However, there are differing perspectives on the impacts these changes will have on tropical forest species. SI will be hosting some of the world's leading scientists to discuss and debate these topics in a public symposium.

Presenters/Presentadores

S. Joseph Wright, STRI staff scientist; *William Laurance*, STRI staff scientist; *Gregory Asner*, staff scientist, Carnegie Institution; *Elizabeth Bennett*, director, Hunting and Wildlife Trade Program, Wildlife Conservation Society; *Robin Chazdon*, Ecology and Evolutionary Biology professor, University of Connecticut; *Thomas Rudel*, Human Ecology and Sociology professor, Rutgers University; *Claudio Valladares-Padua*, Conservation scientist, Wildlife Trust Alliance; *Nigel Stork*, Head, Resource Management & Geography Department,

University of Melbourne, Australia.

The symposium's eight guests will discuss topics related to tropical extinction including deforestation and land-use change, hunting and disease; climate change; values of and threats to tropical nature reserves; and possible conservation actions.

This symposium has been generously underwritten by the Science Committee of the Smithsonian National Board. Introductions will be made by Smithsonian Secretary G. Wayne Clough and panel discussions will be moderated by Cristián Samper, director of the National Museum of Natural History.

For information, registration and live webcast link, visit us at www.si.edu/tec

¿Sobrevivirán los bosques tropicales? Nuevas amenazas y realidades en la crisis de extinción tropical. Lunes, 12 de enero, de 1-6:30pm en el Auditorio Baird de Museo Nacional de los EU de Historia Natural, SI, Washington DC.

Se reconoce ampliamente que los paisajes tropicales están cambiando en proporciones sin

precedente alrededor del mundo. Sin embargo, hay diferencias en las perspectivas sobre el impacto que estos cambios tendrán sobre las especies tropicales del bosque. SI presentará a algunos de los científicos de mayor liderazgo este enero para discutir y debatir estos tópicos en un simposio público.

Los ocho invitados al simposio (listados en la versión en inglés) discutirán los tópicos relacionados con la extinción tropical incluyendo la deforestación y el cambio en los usos de la tierra, la cacería y las enfermedades, el cambio climático, valores y amenazas a las reservas naturales en los trópicos, y las posibles acciones de conservación.

Este simposio ha sido generosamente financiado por el Comité de Ciencias de la Junta Nacional de Directores del Smithsonian. Las introducciones de los presentadores (listados en la versión en inglés) serán hechas por el secretario G. Wayne Clough y Cristián Samper, director del NMNH.

Para mayor información, registro y enlace a la transmisión en vivo, visítenos en www.si.edu/tec



**The Smithsonian Tropical Research Institute, Bocas Research Station
announces**

PAN-AMERICAN ADVANCED STUDIES INSTITUTE

Advanced Tropical Field Phycology

Dates: August 14-September 4, 2009

Location: Bocas Research Station, Bocas del Toro, Panama.

Instructors: Drs. Brian Wysor, Wilson Freshwater, and Suzanne Fredericq,

Organizer: Rachel Collin, STRI

Participating Experts: Drs. Renato Crespo Pereira, Rafael Riosmena-Rodriguez, Susana Enríquez Domínguez, Juan Lopez-Bautista, Guillermo Diaz-Pulido, Amy Driskell, and Steve Paton

Application: This is an NSF-funded, 3-week workshop for international graduate students, post-docs, and young investigators. The focus is on state-of-the-art methods and concepts for the study of macroalgae. Please e-mail your CV, 1 letter of recommendation, and a 1-2 page statement explaining your background and reasons for taking the course, to Rebecca Rissanen at RissanenJ@si.edu before February 15, 2009. For more information see <http://striweb.si.edu/taxonomy/>



And a short-course in

TAXONOMY AND BIOLOGY OF TUNICATES

Dates: June 4-18 2009

Location: Bocas Research Station, Bocas del Toro, Panama.

Registration Fee: \$500 (some fellowships are available).

Instructors: Dr. Rosana Rocha, Universidade Federal do Paraná, Brasil, Gretchen Lambert, University of Washington Friday Harbor Laboratories, Dr. Charles Lambert, University of Washington Friday Harbor Laboratories

Application: This course is directed towards graduate students and advanced undergraduate or Licenciado candidates and will be conducted in English. Please e-mail your CV, 1 letter of recommendation, and a 1-2 page statement explaining your background and reasons for taking the course, to Rebecca Rissanen at RissanenJ@si.edu before January 30, 2009. Limit 12 students. For more information see http://striweb.si.edu/taxonomy_training/