

THE COLLECTION OF KOREAN MORTUARY POTTERY IN THE U. S. NATIONAL MUSEUM.

By PIERRE LOUIS JOUY.

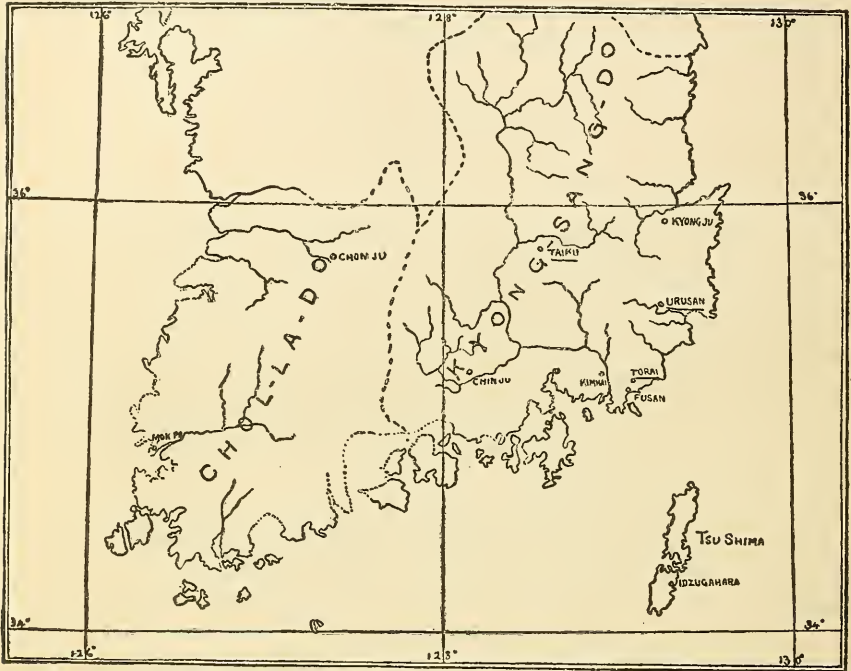
On arriving in Fusan, in the winter of 1883, my attention was early attracted to the subject of Korean pottery, and several pieces of a ware entirely different from the ordinary pottery of the country were brought to me for examination by Japanese residents. These pieces, to which a remote antiquity was ascribed, were held in high esteem by Japanese connoisseurs who delight in rare and curious objects. An extraordinary value was given to fine specimens and they were often sent to friends in Japan, and especially to Osaka, which port has long enjoyed direct communication with Korea.

The discoveries of Professor Morse in Japan* and the researches of Japanese archaeologists in bringing to light the ancient stone implements and numerous other prehistoric objects, including pottery, had inspired me with the desire to form similar collections in Korea. This seemed all the more encouraging as the country was not only practically a virgin field of research, but abounded in monuments of great antiquity and evidences of long occupation of the soil. Korea is one vast graveyard. Burial mounds and monuments of varying age and rich in archaeological interest are a prominent feature of the landscape. Although a tolerably thickly populated country there are many sections where the cemeteries occupy at least a quarter as much space as that used for agricultural purposes. From the capital to the southeastern coast, a distance of about 200 miles, they are scarcely ever out of sight of the traveler, their prominent position on the hillsides making them very conspicuous. Isolated graves of greater distinction are of frequent occurrence and are tended from generation to generation with great care. The grass is kept well cropped to avoid danger from fire, and a grove of evergreen trees surrounds the grave. These groves, frequently the only trees on a hillside, are arranged in the shape of a horseshoe, the mound, from four to five feet high, being in the center, and the open space on the lower side.

* The Shell Mounds of Omori. Tokio, 1879.

Some mounds are further protected by a wall on three sides still following the shape of a horseshoe, and the open side is guarded by nearly life-sized effigies in stone arranged in pairs on each side of a slab of granite on which is carved an inscription.

Most graves, however, have simply an upright slab of granite, rectangular in shape, bearing an inscription, and supported by a low pedestal.



SKETCH MAP OF SOUTHERN KOREA.

(Places underscored show where mortuary pottery has been found.)

Owing to the recent opening of the country and the utter impossibility for a foreigner to evade the curious eyes of the natives for any length of time, it was well-nigh impossible to accomplish any original investigations. I therefore considered myself fortunate in securing the services of a young native who from time to time brought me many specimens of pottery and other objects which he described as having taken from the earth buried in the ancient graves near the cities of Taiku, Ulsan, and Torai. Among other objects, besides pottery, were rings of copper heavily gilded, parts of bronze horse-trappings, such as buckles and other ornaments, and objects of stone; the most interesting of these objects were arrowheads of slate, and daggers of slate or shale with the handle and blade in one piece. These latter are considerably weathered, showing signs of great age, but were described as having been taken from stone coffers in the graves, which would account for their almost perfect state of preservation.

The pottery in common use in Korea at the present time consists of three kinds; the finest of white, pale buff, or bluish, porcelain sometimes decorated in blue and with a high glaze, is used for the table, and consists of dishes, bowls, and bottles, also wash basins; the second quality is a pale yellow ware, glazed, mostly made into bowls, undecorated, and used by the poorer classes. It is very similar to the common kitchen ware in use all over the world in civilized as well as barbarous kitchens. The third style of pottery is of the commonest kind, made of dark brown, or reddish earth, is glazed inside and out, and has little or no decoration except a wavy line produced by wiping off the glaze, leaving the lighter under surface to show through. Some pieces have their edges scalloped or fluted and are adorned with incised lines, but generally they are quite plain and without these ornamentations. This ware, of which a specimen is shown in this collection (an oil-bottle, No. 94519), is used mainly for oil and water jars and for the common bowls and dishes of the Korean kitchen. House tiles are also made of this clay.

The most ambitious specimens of this latter ware I have seen are the water jars, huge vessels suggesting possibilities of concealment as great as the famous jars in the Arabian tale* ; these are often greater in capacity than an ordinary barrel. There are generally at least two of these huge receptacles placed just outside of the kitchen door. Another curious form is a kind of oven consisting of a shallow vessel with a cover and raised some 8 or 10 inches from the ground on three legs, the whole being made of pottery.

The specimens of ancient Korean pottery, enumerated in the following list, which I have called *mortuary pottery*, are unglazed (a few pieces show apparently accidental glazing in splashes); they range in color from a dull bluish or slate color to dark brown or light red. In form they are archaic, containing many shapes not seen in the modern pottery of the country. In some cases they closely resemble the ancient Etruscan, notably in the various styles of *tazza*, a shallow goblet on a stem supported by a flaring base; sometimes they are provided with handles, but more frequently are without them.

This pottery is of various styles of workmanship, some pieces being modeled by the hand, others paddled into shape by an instrument, others turned on the wheel,† while the larger and more elaborate pieces

* In southern China, in the vicinity of Hong-Kong, similar jars, though not quite so large, are used for burial purposes in place of a coffin.

† The Korean potter's wheel consists of a circular table from 2 to 3 feet in diameter and 4 to 6 inches thick, made of heavy wood so as to aid in giving impetus to it when revolving. In general appearance it is not very unlike a modeler's table. This arrangement is sunken into a depression in the ground, and revolves easily by means of small wheels working on a track underneath, the table being pivoted in the center. The wheel is operated directly by the foot, without the aid of a treadle of any kind. The potter sits squatting in front of the wheel, his bench or seat on a level with it, and space being left between his seat and the wheel to facilitate his movements. With his left foot underneath him, he extends his right foot and strikes the side of the wheel with the bare sole of the foot, causing it to revolve.—The Korean Potter's Wheel: P. L. Jouy. Science: September 21, 1888, p. 144.

show all of these methods combined. Many of the ancient shapes, although of great beauty and utility, are not seen in the modern ware which is far inferior to it in gracefulness of design and variety of pattern of vessel. For instance, the handled mug, which is quite a common shape in the mortuary vessels, is not seen at all among modern Korean, or indeed among Oriental vessels in general, except where it is of obviously modern introduction.

The decoration of these vessels is in incised lines, in most cases made by a comb-shaped instrument; simple geometrical patterns and cross-hatching is also seen; also dots, and excisions which ornament the bases of the jars and the covers of some of the vessels.

Inquiry among the educated classes elicited the information that these vessels were made in ancient times to hold offerings to the dead, and were interred in the grave with the body, and that this practice obtained up to about the twelfth century.

A similar custom prevailed in southern Japan, and the vessels were, moreover, of almost exactly similar shapes and style of ornamentation as shown in Nos. 94520-1 and 94520-2 of this collection, specimens obtained from Nara, the ancient capital of Japan. In the collection of Mr. W. Gowland, late superintendent of the Imperial mint at Osaka, Japan, and in the national collections in Tokio are many examples of pottery taken from graves in Yamato which could be duplicated in this Korean collection.

The present series and the collection in possession of the writer are the only specimens of Korean mortuary pottery that I have any knowledge of in this country.

In plate LXXXVI are shown, besides the example of Korean ware, an oil-bottle, No. 94519; two specimens of ancient Japanese mortuary pottery; also examples of Etruscan and Roman pottery showing two styles of *tazza*, the "tulip-shaped" vessel and the handled mug; but of especial interest is the Roman vessel, No. 136549, in the center, which has a base ornamented with the triangular openings of exactly similar design as those seen in the Korean ware.

Catalogue of the Korean Mortuary Pottery in the National Museum, Collection of
P. L. Jouy.

[NOTE: In the following list the figures in the plates are referred to as being on the upper, middle, or lower line, the figures counting from the left.]

Earthen pot. Brown ware, glazed, possibly warped in firing. The entire outer surface is covered with a reticulated pattern. Height, $11\frac{1}{2}$ inches; diameter, $11\frac{1}{2}$ inches. Southeastern Korea; U. S. N. M. No. 94518-1. Pl. LXXXII, fig. 3, lower line.

Earthen pot. Dark brown ware. The entire outer surface of body and shoulder is covered with a reticulated pattern of small squares. Height, $10\frac{1}{4}$ inches; diameter, $11\frac{1}{4}$ inches. Southeastern Korea; U. S. N. M. No. 94518-2. Pl. LXXXII, fig. 2, lower line.

- Earthen pot.* Yellowish gray ware, washed with a brown slip, if not glazed. The lower part of the body is covered with indented short lines. It is ornamented by a band of four incised waved lines made with a comb. Two similar bands ornament the shoulder, and another the neck. Height, $10\frac{3}{4}$ inches; diameter, $18\frac{3}{8}$ inches. Southeastern Korea; U. S. N. M. No. 94518-3. Pl. LXXXII, fig. 4, lower line.
- Earthen pot.* Dark brown ware, unglazed. Height, $11\frac{1}{2}$ inches; diameter, $11\frac{3}{8}$ inches. Southeastern Korea; U. S. N. M. No. 94518-4. Pl. LXXXII, fig. 3, upper line.
- Earthen pot.* Dark brown ware, unglazed. Ornamented with a beaded molding. Height, 8 inches; diameter, 9 inches. Southeastern Korea; U. S. N. M. No. 94518-5.
- Earthen pot.* Gray ware, unglazed. It is ornamented with a reticulated pattern. Height, $7\frac{1}{2}$ inches; diameter, 9 inches. Southeastern Korea; U. S. N. M. No. 94518-6. Pl. LXXXII, fig. 5, lower line.
- Earthen pot.* Slate-colored ware, unglazed. Height, $7\frac{3}{8}$ inches; diameter, $8\frac{1}{2}$ inches. Southeastern Korea; U. S. N. M. No. 94518-7. Pl. LXXXII, fig. 1, lower line.
- Earthen pot.* Brown ware, unglazed. The lower half of the body of this vessel is similar in ornamentation to No. 3. The shoulder is ornamented with double-grooved lines. Height, $4\frac{1}{4}$ inches; diameter, $7\frac{3}{4}$ inches. Southeastern Korea; U. S. N. M. No. 94518-8. Pl. LXXXIII, fig. 4, upper line.
- Earthen pot.* Brownish gray ware, washed with a slate-colored slip. Height, 7 inches; diameter, 7 inches. Southeastern Korea; U. S. N. M. No. 94518-9. Pl. LXXXII, fig. 2, upper line.
- Earthen Pot.* Yellow ware, unglazed, and lightly fired. Height, 7 inches; diameter, $7\frac{3}{8}$ inches. Southeastern Korea; U. S. N. M. No. 94518-10.
- Earthen pot.* Brown ware, glazed inside and out with a ferric-silicate glaze, now remaining in small patches around the neck, and inside on the bottom. Height, $5\frac{1}{2}$ inches; diameter, $5\frac{3}{4}$ inches. Southeastern Korea; U. S. N. M. No. 94518-11.
- Earthen pot.* Gray ware, glazed. Two small disks of clay are attached to opposite sides of the body. Height, $5\frac{1}{2}$ inches; diameter, 6 inches. Southeastern Korea; U. S. N. M. No. 94518-12. Pl. LXXXII, fig. 5, upper line.
- Earthen pot.* Gray ware, unglazed, and lightly fired, ornamented with light, grooved lines. The neck is ornamented with beaded moldings, also with a band of incised, waved lines (made with a comb having 16 teeth) between the moldings. Height, $7\frac{1}{2}$ inches; diameter, $7\frac{3}{8}$ inches. Southeastern Korea; U. S. N. M. No. 94518-13.
- Earthen pot.* Gray ware, lightly fired, washed with a slate-colored slip, ornamented with a beaded molding, and two bands of incised waved lines, made with a comb. Height, $6\frac{1}{2}$ inches; diameter, $5\frac{1}{2}$ inches. Southeastern Korea; U. S. N. M. No. 94518-14.
- Earthen pot.* Brown ware, glazed, and ornamented with a band of incised waved lines made with a comb. Neck ornamented with three beaded moldings. Height, $6\frac{1}{4}$ inches; diameter, $5\frac{3}{4}$ inches. Southeastern Korea; U. S. N. M. No. 94518-15. Pl. LXXXIII, fig. 2, upper line.
- Earthen pot.* Brown ware, well fired, and washed with a slate-colored slip. Body with an indented bottom, ornamented at its greatest diameter with two bands of waved incised lines made with a comb having 3 or 4 teeth. The shoulder is covered with light waved lines made with a comb. The neck is ornamented with two beaded moldings, and three bands of waved, incised lines similar to those on the body. Height, $7\frac{1}{4}$ inches; diameter, $5\frac{3}{4}$ inches. Southeastern Korea; U. S. N. M. No. 94518-16.
- Earthen pot.* Brown ware, outside washed with a brown slip, inside glazed. Ornamented with a beaded molding, and a wide band of waved lines made with a comb. Height, $6\frac{3}{8}$ inches; diameter, $5\frac{3}{8}$ inches. Southeastern Korea; U. S. N. M. No. 94518-17.

- Earthen pot.* Brown ware, vitrified in firing. Ornamented with three bands of waved, incised lines. Height, 9 inches; diameter, $7\frac{5}{8}$ inches. Southeastern Korea; U. S. N. M. No. 94518-18.
- Earthen vase on stand.* Brown ware washed with a slate-colored slip, unglazed, ornamented with beaded moldings and two bands of waved incised lines made with a comb having three or four teeth. The stand is warped in firing. Height 10 inches; diameter $7\frac{3}{4}$ inches. Southeastern Korea; U. S. N. M., No. 94518-19.
- Earthen vase on stand with cover.* Slate-colored ware. Outside of body and inside of mouth glazed with a greenish ferric-silicate glaze. Shoulder and neck ornamented with beaded moldings. The stand is ornamented with beaded moldings and perforated with six triangular openings. The cover is also marked with indentations, and glazed inside and out. Height, $10\frac{3}{8}$ inches; diameter, $7\frac{3}{4}$ inches. Southeastern Korea; U. S. N. M. No. 94518-20.
- Earthen bowl on stand.* Grayish brown ware, glazed outside. The bowl has its entire outer surface covered with indentations like No. 3, but these have been partly effaced from the sides. The sides are ornamented with beaded moldings and two bands of incised zigzag lines. Height, $8\frac{1}{2}$ inches; diameter, $10\frac{1}{4}$ inches. Southeastern Korea; U. S. N. M. No. 94518-21. Pl. LXXXII, fig. 4, upper line.
- Earthen bowl on stand.* Brown ware, washed with a brown slip. The sides and lips are ornamented with beaded moldings, between which are bands of waved incised lines made with a comb. The stand is ornamented like the bowl, and also has two rows of six triangular openings. Height, $10\frac{1}{2}$ inches; diameter, $12\frac{1}{4}$ inches. Southeastern Korea; U. S. N. M. No. 94518-22. Pl. LXXXIII, fig. 4, lower line.
- Earthen bowl or cup on stand, handled.* Brown ware, washed outside with dark brown slip. The bowl is ornamented with two bands of prominent beaded moldings, between which is a band of waved incised lines made with a comb having four teeth. The handle is small and flat. The stand is molded; its sides are pierced with six openings. Height, $5\frac{1}{2}$ inches; diameter, $5\frac{3}{4}$ inches. Southeastern Korea; U. S. N. M. No. 94518-23. Pl. LXXXV, fig. 4, lower line.
- Earthen bowl or cup with two handles.* Brown ware, washed with a dark brown slip on the outside. The bowl is ornamented with three bands of waved incised double lines cut so deeply as to raise a bur. The handles are small and flat, placed on opposite sides. The lip is shouldered for a cover, which is missing. Height, 4 inches; diameter, 6 inches. Southeastern Korea; U. S. N. M. No. 94518-24.
- Earthen pot-shaped vessel on stand, with cover.* Slate-colored ware. The stand is pierced with five rectangular openings. The cover is slightly convex, with a small knob in its center. Height, $6\frac{1}{2}$ inches; diameter, $6\frac{3}{8}$ inches. Southeastern Korea; U. S. N. M. No. 94518-25. Pl. LXXXII, fig. 1, upper line.
- Earthen pot-shaped vessel with handle and cover.* Gray ware, washed with a slate-colored slip. Body ornamented with three beaded moldings. The handle is round and looped. The cover is convex, with a knob. Its rim is made to encircle the lip of the vessel. Height, $5\frac{1}{2}$ inches; diameter, $4\frac{3}{4}$ inches. Southeastern Korea; U. S. N. M. No. 94518-26.
- Earthen pot with handle.* Brown ware, washed with a slate-colored slip. Height, $3\frac{3}{4}$ inches; diameter, $4\frac{1}{2}$ inches. Southeastern Korea; U. S. N. M. No. 94518-27. Pl. LXXXV, fig. 5, lower line.
- Earthen jar with cover and handle.* Brown ware, washed with a slate-colored slip. The body is ornamented with a band of incised waved lines, between beaded moldings. Height, 8 inches; diameter, $8\frac{3}{8}$ inches. Southeastern Korea; U. S. N. M. No. 94518-28.
- Earthen jar on stand.* Slate-colored ware, unglazed. Body ornamented with a band of incised waved lines made with a comb having five teeth. This band is between two beaded moldings. The shoulder is ornamented like the body. The neck has beaded moldings around the lower part. Height, $10\frac{3}{8}$ inches; diameter, $9\frac{3}{8}$ inches. Southeastern Korea; U. S. N. M. No. 94518-29. Pl. LXXXIII, fig. 5, upper line.

- Earthen bowl.* Slate-colored ware, washed with a yellow slip and lightly fired; unglazed. Height, $4\frac{5}{8}$ inches; diameter, $5\frac{3}{4}$ inches. Southeastern Korea; U. S. N. M. No. 94518-30. Pl. LXXXIII, fig. 7, upper line.
- Earthen cup or tumbler.* Gray ware, glazed dark brown inside and out. Ornamented with three beaded moldings. Height, $1\frac{3}{8}$ inches; diameter, $3\frac{5}{8}$ inches. Southeastern Korea; U. S. N. M. No. 94518-31. Pl. LXXXV, fig. 3, middle line.
- Earthen cup on a stand.* Slate-colored ware, unglazed, and well fired. Height, $2\frac{5}{8}$ inches; diameter, $2\frac{3}{4}$ inches. Southeastern Korea; U. S. N. M. No. 94518-32. Pl. LXXXIV, fig. 1, upper line.
- Earthen cup on a ring base.* Gray ware, unglazed. Height, $1\frac{1}{2}$ inches; diameter, $2\frac{3}{8}$ inches. Southeastern Korea; U. S. N. M. No. 94518-33.
- Earthen cup.* Dark brown ware, washed with a brown slip. Height, 2 inches; diameter, $3\frac{1}{2}$ inches. Southeastern Korea; U. S. N. M. No. 94518-34.
- Earthen box with cover.* Dark red ware washed with a dark brown slip. Height, $1\frac{1}{2}$ inches; diameter, $4\frac{1}{4}$ inches. Southeastern Korea; U. S. N. M. No. 94518-35. Pl. LXXXV, fig. 2, upper line.
- Earthen bowl.* Slate-colored ware, unglazed and warped in firing. The bowl is ornamented with incised lines. Height, $2\frac{1}{4}$ inches; diameter, 5 inches. Southeastern Korea; U. S. N. M. No. 94518-36.
- Earthen bottle.* Slate-colored ware, unglazed. Neck encircled with a beaded molding. Height, 3 inches; diameter, $2\frac{1}{4}$ inches. The throat is one-half inch in diameter. Southeastern Korea; U. S. N. M. No. 94518-37. Pl. LXXXV, fig. 1, middle line.
- Earthen tazza.* Slate-colored ware. An incised triangle with a perpendicular line intersecting its apex is cut on the stand just below the bowl. Height, 5 inches; diameter, $6\frac{1}{2}$ inches. Southeastern Korea; U. S. N. M. No. 94518-38. Pl. LXXXIV, fig. 3, middle line.
- Earthen tazza.* Slate-colored ware, unglazed. In form similar to the preceding, except that the stand is pierced with two rows of four rectangular openings. Height, 5 inches; diameter, $5\frac{3}{4}$ inches. Southeastern Korea; U. S. N. M. No. 94518-39. Pl. LXXXIV, fig. 4, middle line.
- Earthen bowl.* Slate-colored ware, unglazed. Height, $5\frac{3}{8}$ inches; diameter, $4\frac{3}{4}$ inches. Southeastern Korea; U. S. N. M. No. 94518-40. Pl. LXXXIV, fig. 3, upper line.
- Earthen tazza.* Slate-colored ware similar to No. 38 in form except that the edge is shouldered to receive a cover and the stand is pierced with but one row of three long triangular openings. Height, $4\frac{1}{2}$ inches; diameter, 6 inches. Southeastern Korea; U. S. N. M. No. 94518-41. Pl. LXXXIV, fig. 6, middle line.
- Earthen tazza.* Slate-colored ware. Height, 4 inches; diameter, $5\frac{1}{4}$ inches. Southeastern Korea; U. S. N. M. No. 94518-42.
- Earthen tazza without handles.* Similar to preceding. Height, $2\frac{3}{8}$ inches; diameter, 4 inches. Southeastern Korea; U. S. N. M. No. 94518-43. Pl. LXXXIV, fig. 6, upper line.
- Earthen tazza.* Slate-colored ware, unglazed. Height, 7 inches; diameter, 6 inches. Southeastern Korea; U. S. N. M. No. 94518-44. Pl. LXXXIV, fig. 3, lower line.
- Earthen tazza with cover.* Slate colored ware with a brown glaze. Height, $5\frac{1}{4}$ inches; diameter, $5\frac{3}{8}$ inches. Southeastern Korea; U. S. N. M. No. 94518-45. Pl. LXXXIV, fig. 5, lower line.
- Earthen tazza.* Slate-colored ware. Height, $4\frac{1}{4}$ inches; diameter, $4\frac{3}{4}$ inches. Southeastern Korea; U. S. N. M. No. 94518-46. Pl. LXXXIV, fig. 2, middle line.
- Earthen bowl on stand with cover.* Gray ware, lightly fired. The bowl is decorated with beaded moldings and a band of incised circles. The cover is also ornamented with a band of incised circles, and a band of barred triangles between two circles. Height, $5\frac{1}{4}$ inches; diameter, $5\frac{1}{4}$ inches. Southeastern Korea; U. S. N. M. No. 94518-47. Pl. LXXXIV, fig. 1, middle line.

- Earthen tazza with cover.* Slate-colored ware, unglazed. Height, $4\frac{3}{4}$ inches; diameter, $4\frac{1}{2}$ inches. Southeastern Korea; U. S. N. M. No. 94518-48. Pl. LXXXIV, fig. 2, upper line.
- Earthen tazza with cover.* Slate-colored ware glazed brown. The cover is ornamented with incised circles grouped by threes, and with diagonal dotted lines between the first and second, and second and third groups. Height, 7 inches; diameter, $5\frac{3}{4}$ inches. Southeastern Korea; U. S. N. M. No. 94518-49. Pl. LXXXIV, fig. 4, lower line.
- Earthen tazza.* Slate-colored ware, unglazed. Height, $4\frac{1}{2}$ inches; diameter, $5\frac{3}{4}$ inches. Southeastern Korea; U. S. N. M. No. 94518-50. Pl. LXXXIV, fig. 6, lower line.
- Earthen tazza.* Slate-colored ware, glazed a dark brown. Height, $5\frac{3}{8}$ inches; diameter, $5\frac{5}{8}$ inches. Southeastern Korea; U. S. N. M. No. 94518-51. Pl. LXXXIV, fig. 1, lower line.
- Earthen pot.* Brown ware, unglazed. Height, $7\frac{3}{4}$ inches; diameter, $7\frac{3}{8}$ inches. Southeastern Korea; U. S. N. M. No. 94518-52.
- Earthen pot.* Dark brown ware, unglazed. Height, $6\frac{1}{4}$ inches; diameter, $7\frac{3}{8}$ inches. Southeastern Korea; U. S. N. M. No. 94518-53.
- Earthen pot.* Slate-colored ware, unglazed. Height, $5\frac{1}{4}$ inches; diameter, $5\frac{7}{8}$ inches. Southeastern Korea; U. S. N. M. No. 94518-54. Pl. LXXXIII, fig. 1, upper line.
- Earthen pot.* Slate-colored ware, unglazed. Height, 5 inches; diameter, 5 inches. Southeastern Korea; U. S. N. M. No. 94518-55.
- Earthen jar, stand broken off and missing.* Slate-colored ware, unglazed. Ornamented just below the shoulder with two bands of waved incised lines made with a comb having nine teeth. Neck ornamented with two bands of waved incised lines and four beaded moldings. Height, $9\frac{1}{4}$ inches; diameter, $8\frac{3}{4}$ inches. Southeastern Korea; U. S. N. M. No. 94518-56.
- Earthen jar on stand.* Slate-colored ware glazed yellow, badly warped and blistered in firing. Ornamented with grooved lines. Neck with beaded moldings. Height, $13\frac{1}{2}$ inches; diameter, $10\frac{1}{4}$ inches. Southeastern Korea; U. S. N. M. No. 94518-57.
- Earthen stand.* Terra cotta, colored with a brown slip. Unglazed; ornamented with moldings and a band of incised waved lines made with a comb. The top is dish-shaped, $7\frac{1}{4}$ inches in diameter, the bowl ornamented with beaded molding about an inch from the lip. The stand is open from top to bottom. Height, 14 inches; diameter, 8 inches. Southeastern Korea; U. S. N. M. No. 94518-58.
- Earthen flower stand.* Brown ware, unglazed. Height, $6\frac{1}{4}$ inches; diameter, $8\frac{5}{8}$ inches. Southeastern Korea; U. S. N. M. No. 94518-59. Pl. LXXXV, fig. 3, lower line.
- Earthen cup with handle.* Terra cotta ware, unglazed. Height, $2\frac{7}{8}$ inches; diameter, 4 inches. Southeastern Korea; U. S. N. M. No. 94518-60. Pl. LXXXV, fig. 4, middle line.
- Earthen oil-bottle.* Modern Korean pottery. Terra cotta ware, glazed dark brown. It is ornamented with two grooved lines where the neck springs from the body, and a beaded molding around the middle of the neck. The glaze is wiped off in wide curved lines and dashes from the shoulder. Height, 15 inches diameter, $7\frac{1}{2}$ inches. Torai, Korea; U. S. N. M. No. 94519. Pl. LXXXVI, fig. 2, upper line.
- Earthen vase on a stand.* Gray earthen ware unglazed. The body of the vessel is ornamented with light grooved parallel lines made with a comb. The shoulder is covered with a scale pattern of light incised lines made with a comb. Height, $6\frac{3}{4}$ inches; diameter, $3\frac{7}{8}$ inches. Nara, Japan; U. S. N. M. No. 94520-1. Pl. LXXXVI, fig. 1, upper line.
- Earthen bottle.* Terra cotta ware, unglazed. The lower part of the body appears to have been pared with a knife. Height, $3\frac{3}{8}$ inches; diameter, $3\frac{1}{2}$ inches. Nara, Japan; U. S. N. M. No. 94520-2. Pl. LXXXVI, fig. 3, upper line.

EXPLANATION OF PLATE LXXXII.

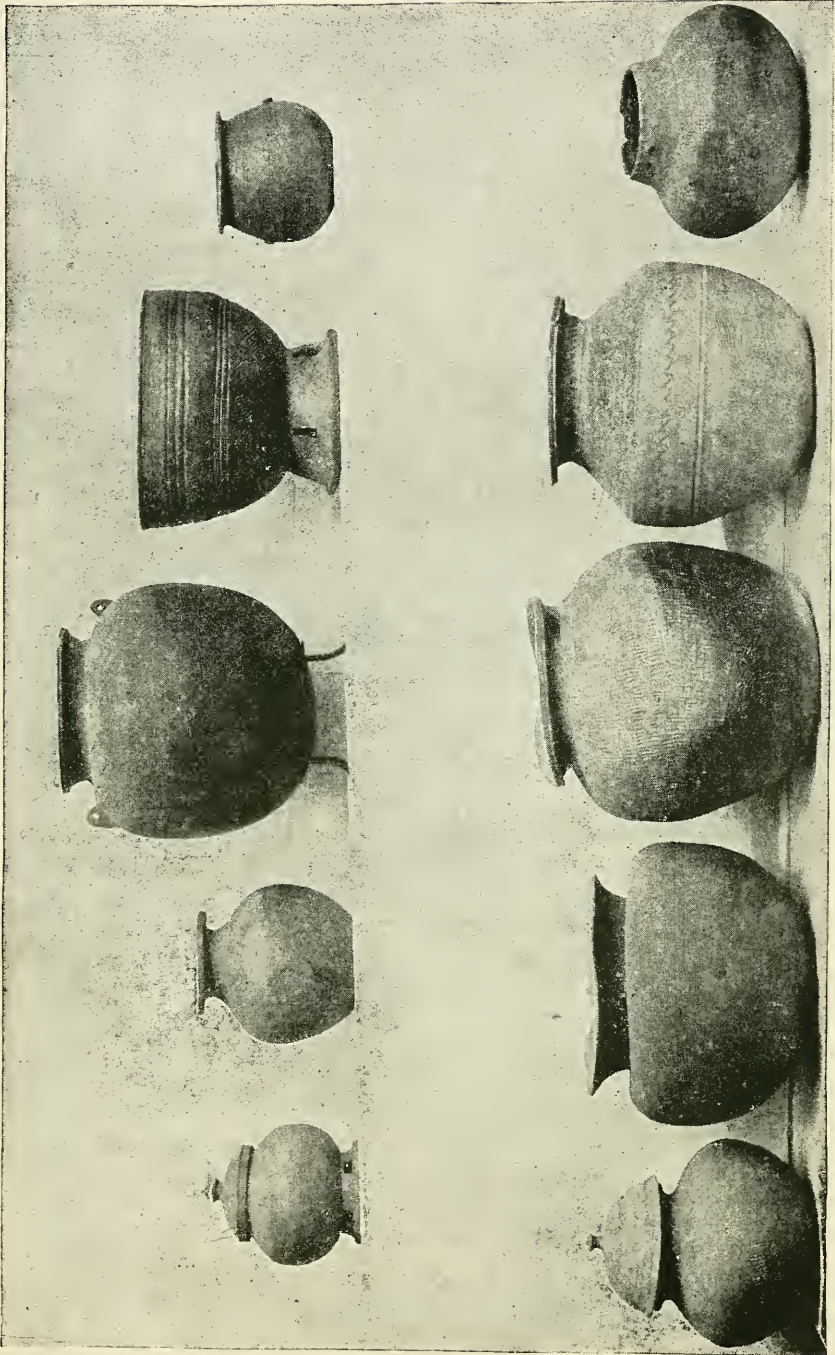
KOREAN MORTUARY POTTERY.

(Upper line, commencing at the left.)

- Fig. 1. EARTHEN POT-SHAPED VESSEL ON STAND, WITH COVER. Slate-colored ware. The stand is pierced with five rectangular openings. The cover is slightly convex, with a small knob in its center. Height, $6\frac{1}{2}$ inches; diameter, $6\frac{3}{8}$ inches. (Cat. No. 94518-25, U. S. N. M. Southeastern Korea.)
- Fig. 2. EARTHEN POT. Brownish gray ware; washed with a slate-colored slip. Height, 7 inches; diameter, 7 inches. (Cat. No. 94518-9, U. S. N. M. Southeastern Korea.)
- Fig. 3. EARTHEN POT AND COVER. Dark brown ware; unglazed. Height, $11\frac{1}{2}$ inches; diameter, $11\frac{3}{8}$ inches. (Cat. No. 94518-4, U. S. N. M. Southeastern Korea.)
- Fig. 4. EARTHEN BOWL ON STAND. Grayish brown ware; glazed outside. The bowl has its entire outer surface covered with indentations like No. 3, but these have been partly effaced from the sides. The sides are ornamented with beaded moldings and two bands of incised zigzag lines. Height, $8\frac{1}{2}$ inches; diameter, $10\frac{1}{4}$ inches. (Cat. No. 94518-21, U. S. N. M. Southeastern Korea.)
- Fig. 5. EARTHEN POT. Gray ware; glazed. Two small disks of clay are attached to opposite sides of the body. Height, $5\frac{1}{2}$ inches; diameter, 6 inches. (Cat. No. 94518-12, U. S. N. M. Southeastern Korea.)

(Lower line, commencing at the left.)

- Fig. 1. EARTHEN POT. Slate-colored ware; unglazed. Height, $7\frac{3}{8}$ inches; diameter, $8\frac{1}{2}$ inches. (Cat. No. 94518-7, U. S. N. M. Southeastern Korea.)
- Fig. 2. EARTHEN POT. Dark brown ware. The entire outer surface of body and shoulder is covered with a reticulated pattern of small squares. Height, $10\frac{1}{4}$ inches; diameter, $11\frac{1}{2}$ inches. (Cat. No. 94518-2, U. S. N. M. Southeastern Korea.)
- Fig. 3. EARTHEN POT. Brown ware; glazed. Possibly warped in firing. The entire outer surface is covered with a reticulated pattern. Height, $11\frac{1}{2}$ inches; diameter, $11\frac{1}{4}$ inches. (Cat. No. 94518-1, U. S. N. M. Southeastern Korea.)
- Fig. 4. EARTHEN POT. Yellowish gray ware; washed with a brown slip, if not glazed. The lower part of the body is covered with indented short lines. It is ornamented by a band of four incised waved lines made with a comb. Two similar bands ornament the shoulder, and another the neck. Height, $10\frac{3}{8}$ inches; diameter, $18\frac{3}{8}$ inches. (Cat. No. 94518-3, U. S. N. M. Southeastern Korea.)
- Fig. 5. EARTHEN POT. Gray ware; unglazed. It is ornamented with a reticulated pattern. Height, $7\frac{1}{2}$ inches; diameter, 9 inches. (Cat. No. 94518-6, U. S. N. M. Southeastern Korea.)



KOREAN MORTUARY POTTERY.

EXPLANATION OF PLATE LXXXIII.

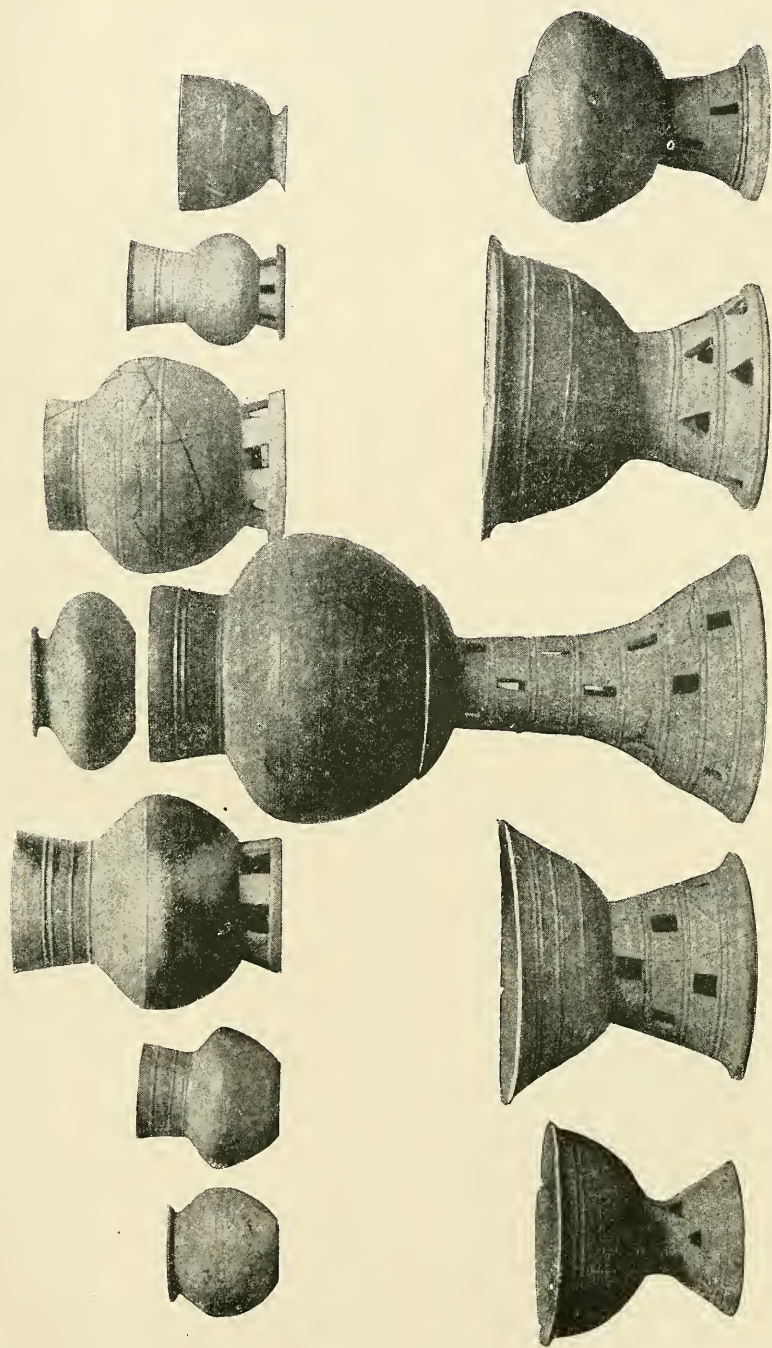
KOREAN MORTUARY POTTERY.

(Upper line, commencing at the left.)

- Fig. 1. EARTHEN POT. Slate-colored ware; unglazed. Height, $5\frac{1}{4}$ inches; diameter, $5\frac{7}{8}$ inches. (Cat. No. 94518-54, U. S. N. M. Southeastern Korea.)
- Fig. 2. EARTHEN POT. Brown ware; glazed and ornamented with a band of incised waved lines made with a comb. Neck ornamented with three beaded moldings. Height, $6\frac{1}{4}$ inches; diameter, $5\frac{3}{4}$ inches. (Cat. No. 94518-15, U. S. N. M. Southeastern Korea.)
- Fig. 4. EARTHEN POT. Brown ware; unglazed. The lower half of the body of this vessel is similar in ornamentation to No. 3 in Pl. LXXXII. The shoulder is ornamented with double-grooved lines. Height, $4\frac{3}{4}$ inches; diameter, $7\frac{3}{4}$ inches. (Cat. No. 94518-8, U. S. N. M. Southeastern Korea.)
- Fig. 5. EARTHEN JAR ON STAND. Slate-colored ware; unglazed. Body ornamented with a band of incised waved lines made with a comb having five teeth. This band is between two beaded moldings. The shoulder is ornamented like the body. The neck has beaded moldings around the lower part. Height, $10\frac{3}{8}$ inches; diameter, $9\frac{3}{8}$ inches. (Cat. No. 94518-29, U. S. N. M. Southeastern Korea.)
- Fig. 7. EARTHEN BOWL. Slate-colored ware; washed with a yellow slip and lightly fired; unglazed. Height, $4\frac{5}{8}$ inches; diameter, $5\frac{3}{4}$ inches. (Cat. No. 94518-30, U. S. N. M. Southeastern Korea.)

(Lower line, commencing at the left.)

- Fig. 4. EARTHEN BOWL ON STAND. Brown ware; washed with a brown slip. The sides and lips are ornamented with beaded moldings, between which are bands of waved incised lines made with a comb. The stand is ornamented like the bowl, and also has two rows of six triangular openings. Height, $10\frac{1}{2}$ inches; diameter, $12\frac{1}{4}$ inches. (Cat. No. 94518-22, U. S. N. M. Southeastern Korea.)



KOREAN MORTUARY POTTERY.

EXPLANATION OF PLATE LXXXIV.

KOREAN MORTUARY POTTERY.

(Upper line, commencing at the left.)

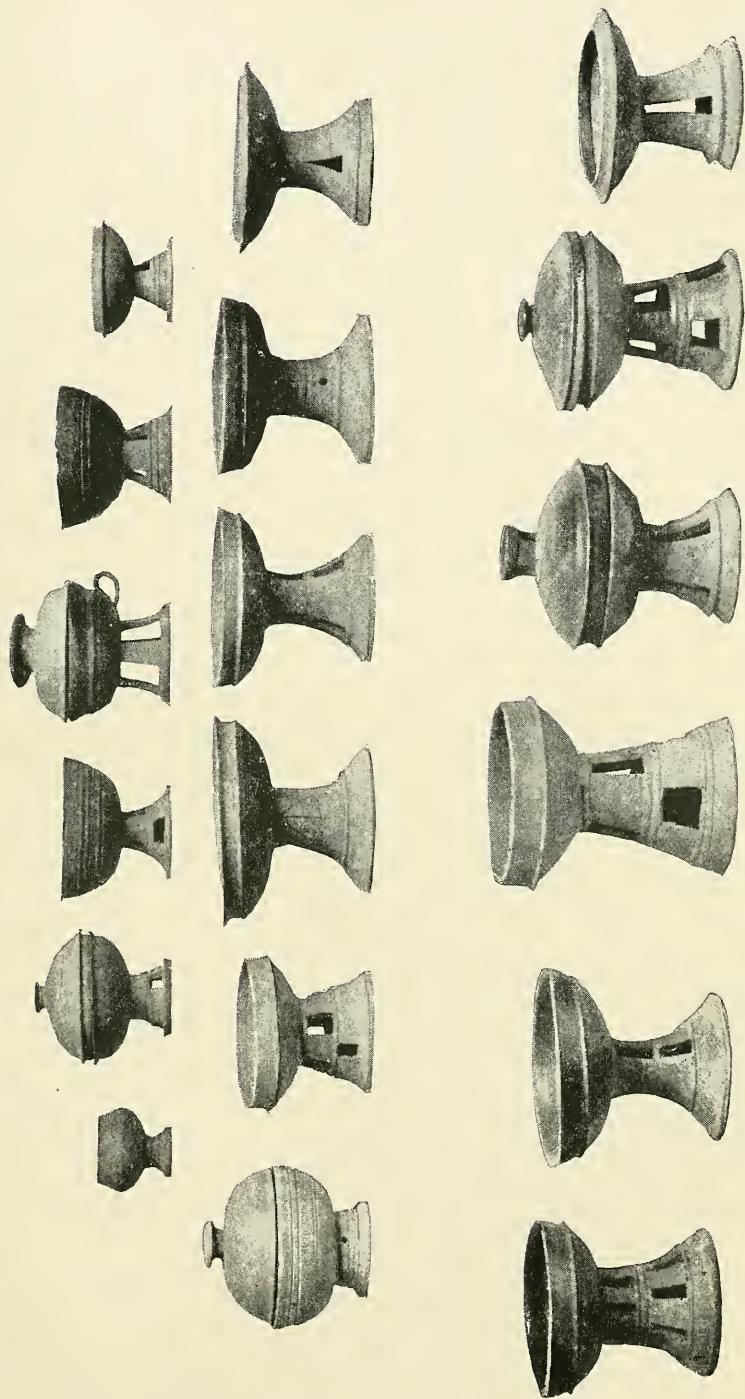
- Fig. 1. EARTHEN CUP ON STAND. Slate-colored ware; unglazed and well fired. Height, $2\frac{3}{8}$ inches; diameter, $2\frac{3}{4}$ inches. (Cat. No. 94518-32, U. S. N. M. Southeastern Korea.)
- Fig. 2. EARTHEN TAZZA, WITH COVER. Slate-colored ware; unglazed. Height, $4\frac{1}{2}$ inches; diameter, $4\frac{1}{2}$ inches. (Cat. No. 94518-48, U. S. N. M. Southeastern Korea.)
- Fig. 3. EARTHEN BOWL ON STAND, WITH COVER. Slate-colored ware; unglazed. Height, $5\frac{3}{4}$ inches; diameter, $4\frac{1}{2}$ inches. Cat. No. 94518-40, U. S. N. M. Southeastern Korea.
- Fig. 6. EARTHEN TAZZA, WITHOUT HANDLES. Slate-colored ware. Height, $2\frac{3}{4}$ inches; diameter, 4 inches. (Cat. No. 94518-43, U. S. N. M. Southeastern Korea.)

(Middle line, commencing at the left.)

- Fig. 1. EARTHEN BOWL ON STAND, WITH COVER. Gray ware; lightly fired. The bowl is decorated with beaded moldings and a band of incised circles. The cover is also ornamented with a band of incised circles, and a band of barred triangles between two circles. Height, $5\frac{1}{4}$ inches; diameter, $5\frac{1}{4}$ inches. (Cat. No. 94518-47, U. S. N. M. Southeastern Korea.)
- Fig. 2. EARTHEN TAZZA. Slate-colored ware. Height, $4\frac{1}{4}$ inches; diameter, $4\frac{3}{4}$ inches. (Cat. No. 94518-46, U. S. N. M. Southeastern Korea.)
- Fig. 3. EARTHEN TAZZA. Slate-colored ware. An incised triangle with a perpendicular line intersecting its apex is cut on the stand just below the bowl. Height, 5 inches; diameter, $6\frac{1}{2}$ inches. (Cat. No. 94518-38, U. S. N. M. Southeastern Korea.)
- Fig. 4. EARTHEN TAZZA. Slate-colored ware; unglazed. In form similar to Fig. 3, except that the stand is pierced with two rows of four rectangular openings. Height, 5 inches; diameter, $5\frac{3}{4}$ inches. (Cat. No. 94518-39, U. S. N. M. Southeastern Korea.)
- Fig. 6. EARTHEN TAZZA. Slate-colored ware. Similar to Fig. 3 in form, except that the edge is shouldered to receive a cover and the stand is pierced with but one row of three long triangular openings. Height, $4\frac{1}{4}$ inches; diameter, 6 inches. (Cat. No. 94518-41, U. S. N. M. Southeastern Korea.)

(Lower line, commencing at the left.)

- Fig. 1. EARTHEN TAZZA. Slate-colored ware; glazed a dark brown. Height, $5\frac{3}{8}$ inches; diameter, $5\frac{3}{8}$ inches. (Cat. No. 94518-51, U. S. N. M. Southeastern Korea.)
- Fig. 3. EARTHEN TAZZA. Slate-colored ware; unglazed. Height, 7 inches; diameter, 6 inches. (Cat. No. 94518-44, U. S. N. M. Southeastern Korea.)
- Fig. 4. EARTHEN TAZZA, WITH COVER. Slate-colored ware; glazed brown. The cover is ornamented with incised circles grouped by threes, and with diagonal dotted lines between the first and second, and second and third groups. Height, 7 inches; diameter, $5\frac{3}{4}$ inches. (Cat. No. 94518-49, U. S. N. M. Southeastern Korea.)
- Fig. 5. EARTHEN TAZZA. Slate-colored ware, with a bronze glaze. Height, $5\frac{1}{4}$ inches; diameter, $5\frac{3}{8}$ inches. (Cat. No. 94518-45, U. S. N. M. Southeastern Korea.)
- Fig. 6. EARTHEN TAZZA. Slate-colored ware; unglazed. Height, $4\frac{1}{4}$ inches; diameter, $5\frac{3}{8}$ inches. (Cat. No. 94518-50, U. S. N. M. Southeastern Korea.)



KOREAN MORTUARY POTTERY.

EXPLANATION OF PLATE LXXXV.

KOREAN MORTUARY POTTERY.

(Upper line, commencing at the left.)

Fig. 2. EARTHEN COVER OR LOWER HALF OF A BOX. Dark red ware; washed with a dark brown slip. Height, $1\frac{1}{8}$ inches; diameter, $4\frac{1}{4}$ inches. (Cat. No. 94518-35, U. S. N. M. Southeastern Korea.)

(Middle line, commencing at the left.)

Fig. 1. EARTHEN BOTTLE. Slate-colored ware; unglazed. Neck encircled with a beaded molding. The throat is one-half inch in diameter. Height, 3 inches; diameter, $2\frac{3}{8}$ inches. (Cat. No. 94518-37, U. S. N. M. Southeastern Korea.)

Fig. 3. EARTHEN CUP OR TUMBLER. Gray ware; glazed dark brown inside and out. Ornamented with three beaded moldings. Height, $1\frac{3}{4}$ inches; diameter, $3\frac{5}{8}$ inches. (Cat. No. 94518-31, U. S. N. M. Southeastern Korea.)

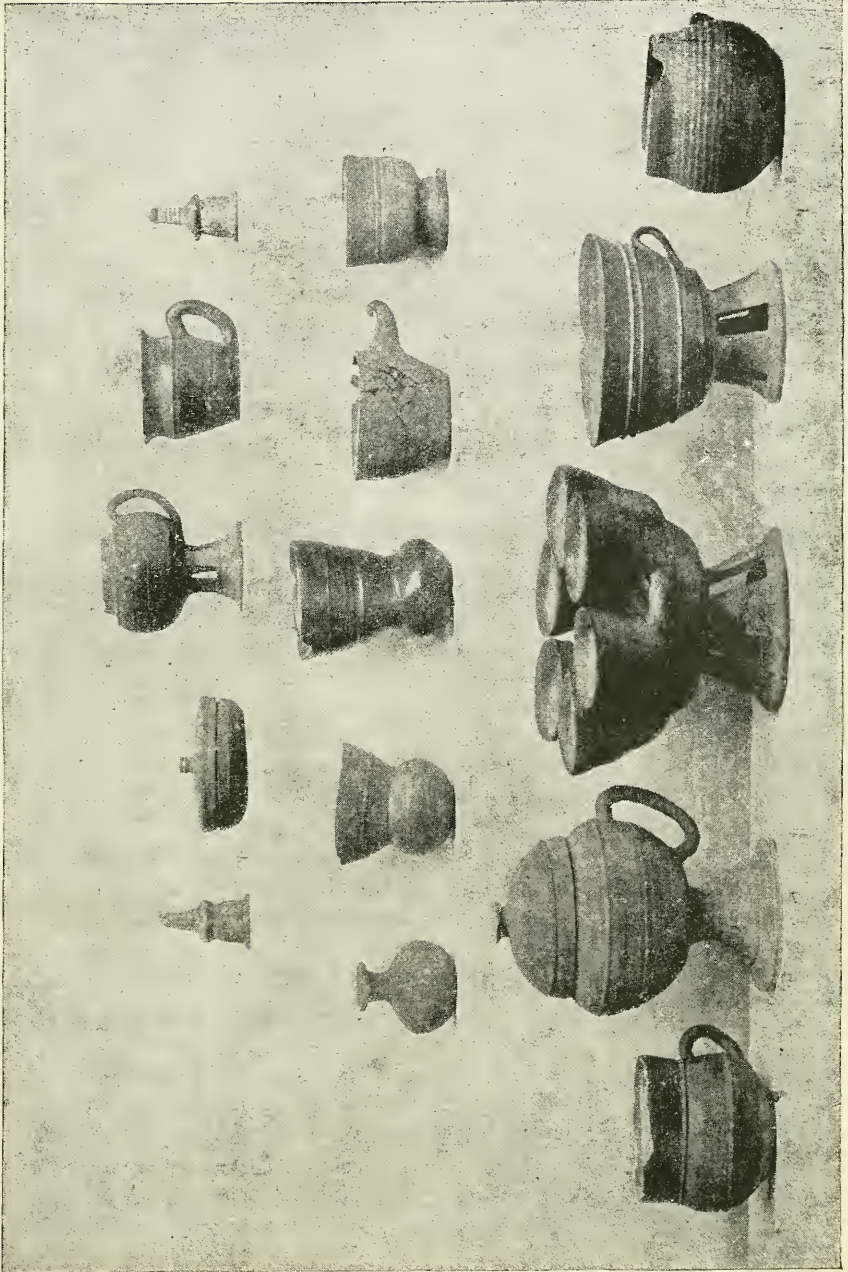
Fig. 4. EARTHEN CUP, WITH HANDLE. Terra cotta ware; unglazed. Height, $2\frac{3}{8}$ inches; diameter, 4 inches. (Cat. No. 94518-60, U. S. N. M. Southeastern Korea.)

(Lower line, commencing at the left.)

Fig. 3. EARTHEN FLOWER STAND. Brown ware; unglazed. Height, $6\frac{1}{4}$ inches; diameter, $8\frac{3}{8}$ inches. (Cat. No. 94518-59, U. S. N. M. Southeastern Korea.)

Fig. 4. EARTHEN BOWL OR CUP ON STAND, HANDLED. Brown ware; washed outside with dark brown slip. The bowl is ornamented with two bands of prominent beaded moldings, between which is a band of waved incised lines made with a comb having four teeth. The handle is small and flat. The stand is molded; its sides are pierced with six openings. Height, $5\frac{1}{4}$ inches; diameter, $5\frac{3}{4}$ inches. (Cat. No. 94518-23, U. S. N. M. Southeastern Korea.)

Fig. 5. EARTHEN POT, WITH HANDLE. Brown ware; washed with a slate-colored slip. Height, $3\frac{3}{4}$ inches; diameter, $4\frac{1}{2}$ inches. (Cat. No. 94518-27, U. S. N. M. Southeastern Korea.)



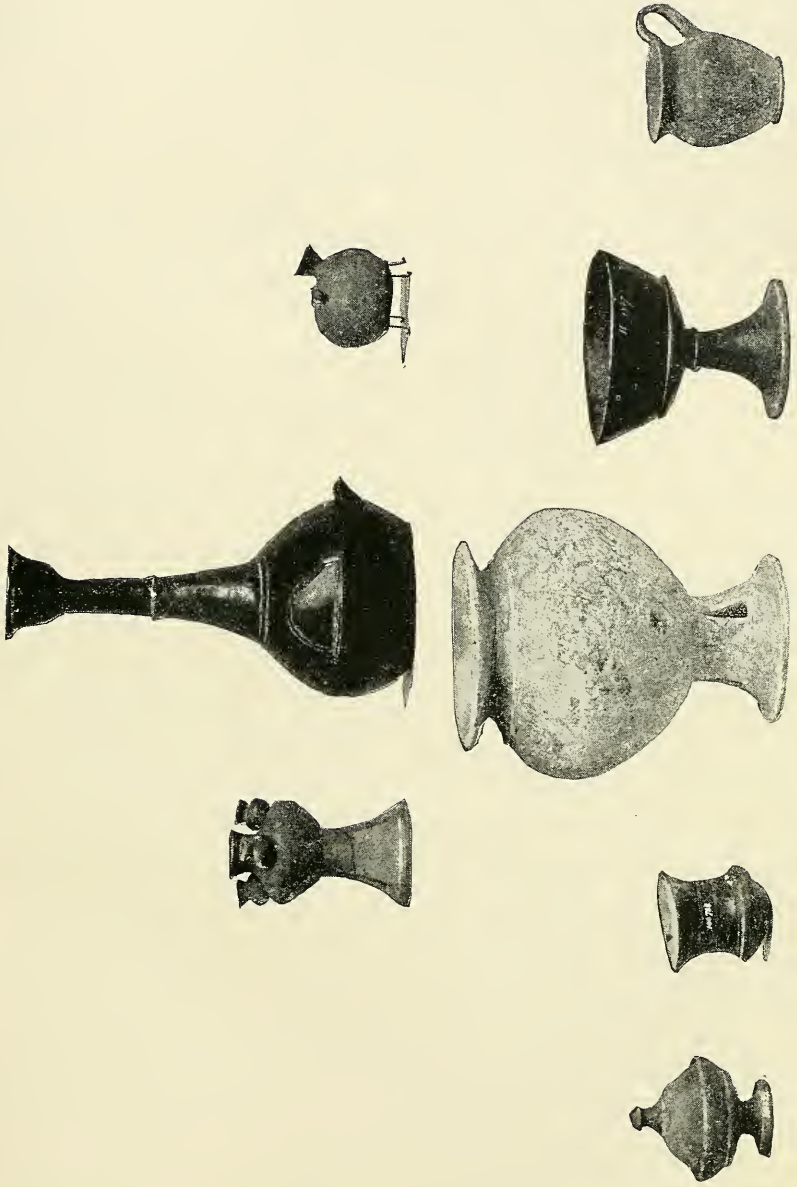
KOREAN MORTUARY POTTERY.

EXPLANATION OF PLATE LXXXVI.

MORTUARY POTTERY.

(Upper line, commencing at the left.)

- Fig. 1. EARTHEN VASE ON A STAND. Gray earthen ware; unglazed. The body of the vessel is ornamented with light grooved parallel lines made with a comb. The shoulder is covered with a scale pattern of light incised lines made with a comb. Height, $6\frac{3}{4}$ inches; diameter, $3\frac{1}{2}$ inches. (Cat. No. 94520-1, U. S. N. M. Nara, Japan.)
- Fig. 2. EARTHEN OIL BOTTLE. Terra cotta ware; glazed dark brown. It is ornamented with two grooved lines where the neck springs from the body, and a beaded molding around the middle of the neck. The glaze is wiped off in wide curved lines and dashes from the shoulder. Height, 15 inches; diameter, $7\frac{1}{2}$ inches. (Cat. No. 94519, U. S. N. M. Torai, Korea.)
- Fig. 3. EARTHEN BOTTLE. Terra cotta ware; unglazed. The lower part of the body appears to have been pared with a knife. Height, $3\frac{3}{4}$ inches; diameter, $3\frac{1}{2}$ inches. (Cat. No. 94520-2, U. S. N. M. Nara, Japan.)



VESSELS SHOWN FOR COMPARISON WITH KOREAN MORTUARY POTTERY.