

References

- Figuerdo PH, Greeley R (2004) Resurfacing history of Europa from pole-to-pole geological mapping. *Icarus* 167:287–312
- Figueredo PH, Greeley R (2002) Insights into Europa's resurfacing from geologic mapping of the trailing Antiojovian hemisphere. *Lunar Planet Sci XXXIII*, abstract #1068, Houston
- Greenberg R (2005) Europa – the ocean moon: search for an alien biosphere. Springer, Berlin, 380 pp
- Johnston SA, Montési LG (2012) The role of dike intrusions in ridge formation on Europa 43rd Lunar Planet Sci Conf, abstract #2538, Houston
- Manga M, Sinton A (2004) Formation of bands and ridges on Europa by cyclic deformation: insights from analogue wax experiments. *J Geophys Res* 109:E09001. doi:10.1029/2004JE002249
- Pappalardo RT, Head JW, Sherman ND, Greeley R, Sullivan RJ et al (1998) Classification of Europa ridges and troughs and a possible genetic sequence. *Lunar Planet Sci XXIX*, abstract #1859, Houston

Sinkhole

- ▶ [Dune Crestline Pit](#)
- ▶ [Karst](#)

Sinuuous Ridge

Maria E. Banks^{1,2}, Jarmo Kortenieni^{3,4} and Henrik Hargitai⁵

¹Center for Earth and Planetary Studies, Smithsonian Institution, National Air and Space Museum, Washington, DC, USA

²Planetary Science Institute, Tucson, AZ, USA

³Earth and Space Physics, Department of Physics, University of Oulu, Oulu, Finland

⁴Arctic Planetary Science Institute, Rovaniemi, Finland

⁵NASA Ames Research Center / NPP, Moffett Field, CA, USA

Definition

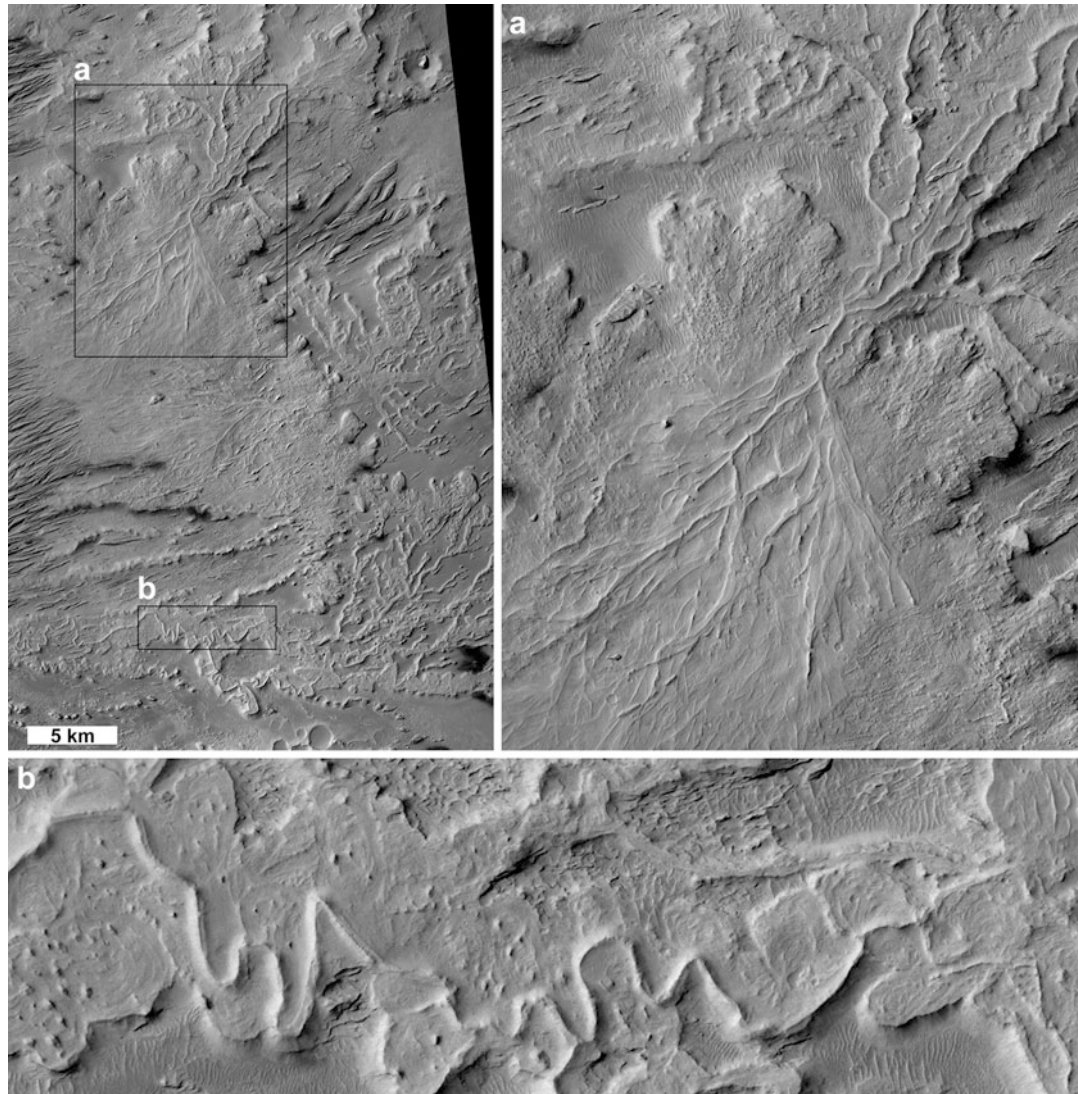
Elongate, positive-relief landforms that have a planform with multiple curves.

Morphometry

Sinuuous ridges vary in their length, width, height, cross-sectional shape, degree of sinuosity, and other detailed characteristics depending on the formation mechanism. They can be up to several kilometers wide, hundreds of meters in height,



Sinuuous Ridge, Fig. 1 Ridges of the Dorsa Argentea, Mars near 76°S 318°E (e.g., Kress et al. 2010). CTX: P13_006282_1046_XN_75S043W. Scale bar 5 km (NASA/JPL/MSSS)



Sinuuous Ridge, Fig. 2 (a) In this example in Medusae Fossae Formation (Mars), sinuous ridges are interpreted as inverted channels from a glacial drainage system (Nußbaumer 2007). Kite (2012) describes this feature as a typical shallow moat-ridge-fan assemblage, in which rough-topped channels drain through breaks in ridges into fans. Headwater networks are interpreted as eskers (non-inverted) or supraglacial channels (*top*), ridges as moraines, and inverted channels in the fan as proglacial channels (*bottom*). An alternative interpretation by Lefort

et al. (2012) considers this network of sinuous ridges as a non-glacial fan (*a, lower left*) and inverted feeder channels (*a, upper right*) that have undergone deformation either by compaction of porous material, removal of material at depth (e.g., ground ice sublimation), or tectonic processes. (b) Multilevel sinuous ridge interpreted as inverted channel on *top* of an inverted floodplain (Burr et al. 2009) CTX B17_016137_1745_XI_05S205W near 5°S, 154°E (NASA/JPL/MSS)

and hundreds of kilometers in length (e.g., Lucchitta et al. 1986; Parker et al. 1986; Ruff and Greeley 1990; Pain et al. 2007; Burr et al. 2009).

Subtypes

- (1) By ridge pattern in plan view: low sinuosity to meandering ridges.
- (2) By network pattern: isolated, subparallel, branched (including dendritic, tributary, and/or distributary networks, Fig. 1), random. Some ridges form ridge complexes described as shallow moat–ridge–fan assemblages (Kite 2012) (Fig. 2a).
- (3) By ridge morphology: cross-sectional shapes are *flat* (floodplain with scrollbar topography), *rounded*, *thin*, *wispy* (short, narrow, occurring in groups), and *multilevel* (comprised of a lower ridge and a thin or wispy upper ridge) (Fig. 2b). A sinuous feature that transitions from a positive ridge to a negative valley is called ► *serpens* (Fig. 3).

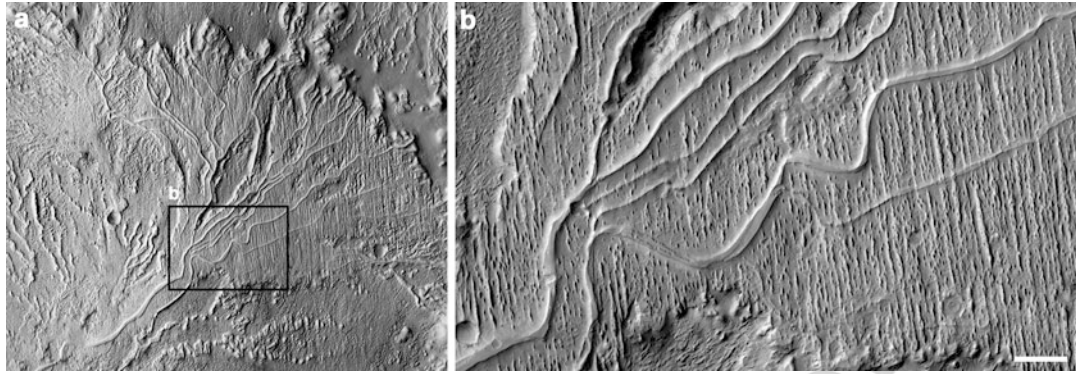
Interpretations

Sinuuous ridges can have a wide variety of different origins. Types of sinuous ridges on Mars can include:

- (1) Inverted stream channels: Ridges formed when differential erosion causes a former channel floor that is protected or has become more resistant to erosion than the surrounding surface (e.g., due to a lag deposit or cementation of sediments) to become exposed (e.g., Pain et al. 2007; Pain and Clarke 2009; Burr et al. 2009, 2010; Lefort et al. 2012) (► *inverted channel*).
- (2) Eskers: long winding ridges composed of stratified glacial drift deposited by a supraglacial, englacial, or subglacial stream of flowing water that are exposed on what was previously the subglacial floor when the ice retreats (e.g., Shreve 1985; Kargel and Strom 1992; Benn and Evans 1998;



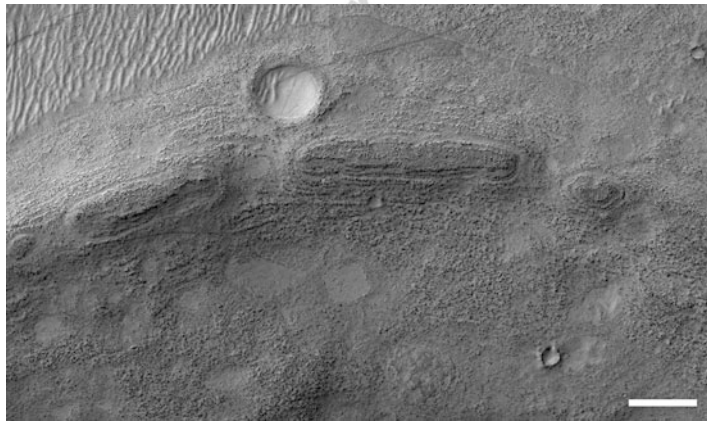
Sinuuous Ridge, Fig. 3 In Arabia Terra, Mars (33°N, 46°E), a sinuous feature transitions from a negative-relief valley (*top*) to a positive-relief, low-elevation, rough, and flat-topped plateau (*bottom*) (► *Serpens*) (Williams and Edgett 2005). HiRISE PSP_005355_2125 (NASA/JPL/UA)



Sinuuous Ridge, Fig. 4 Sinuous ridges at 6.2°S 151.6°E, Mars, in Aeolis Dorsa (Burr et al. 2009) (► Delta). Scale bar 1 km. CTX: B16_015913_1739_XN_06S208W (NASA/JPL/MSSS)

Sinuuous Ridge,

Fig. 5 Layering in Pasithea Dorsum (Mars) at 54.0°S 317.4°E. Scale bar is 500 m. See Fig. 6 for the location of this sinuous ridge in Argyre Planitia. HiRISE PSP_006875_1255 (NASA/JPL/University of Arizona)



Easterbrook 1999; Brennand 2000; Hiesinger and Head 2002; Banks et al. 2009; Nußbaumer 2007; Kite 2012) (► esker).

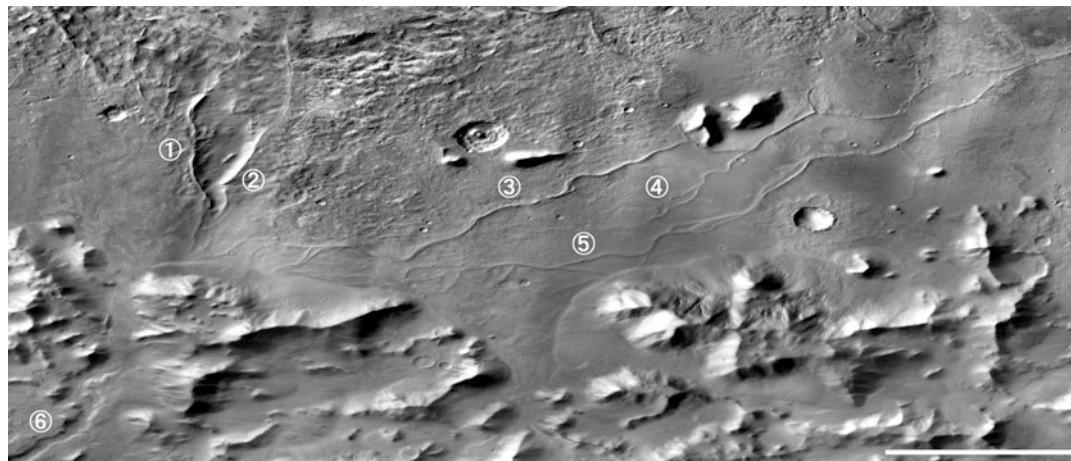
Additional examples include but are not limited to:

- (3) Linear sand dunes (seif dunes) (e.g., Mabbutt and Sullivan 1968; Easterbrook 1999; Parker et al. 1986; Ruff and Greeley 1990).
- (4) Wrinkle ridges (e.g., Golombek et al. 1991, 2000; Hiesinger and Head 2002).
- (5) Lava flow features (e.g., Theilig 1986; Ruff and Greeley 1990; Burr et al. 2009).
- (6) Inverted indurated floodplains (flat-topped ridges) (Burr et al. 2009).
- (7) Glacial moraines (e.g., Hiesinger and Head 2002; Kargel 2004).

- (8) Exhumed igneous and clastic dikes (e.g., Carr and Evans 1980; Pollard 1987; Ruff and Greeley 1990; Head et al. 2006).

Locations of Examples on Mars

Aeolis Dorsa, previously referred to as Aeolis/Zephyria Plana (Burr et al. 2009, 2010; Lefort et al. 2012) (Fig. 4); Argyre Planitia (Kargel and Strom 1992; Hiesinger and Head 2002; Banks et al. 2009; Coleman 2011 and references within, Bernhardt et al. 2013) (Figs. 5 and 6); Dorsa Argentea Formation (Head and Pratt 2001; Ghatan and Head 2004; Kress et al. 2010 and references therein) (Fig. 1); Cerberus Palus (Burr et al. 2009).



Sinuuous Ridge, Fig. 6 Sinuous ridges in southern Argyre Planitia (Mars). (1) Cleia Dorsum, (2) Hegemone Dorsum, (3) Pasithea Dorsum, (4) Auxo Dorsum, (5)

Charis Dorsum, (6) Surlus Vallis. THEMIS Day IR mosaic. Scale bar is 50 km (NASA/JPL-Caltech/Arizona State University)

IAU Descriptor Term

- ▶ **Dorsum, Dorsa**; sinuous features with both positive- and negative-relief segments:
- ▶ **Serpens, Serpentes**.

See Also

- ▶ [Channel Patterns](#)
- ▶ [Dike \(Igneous\)](#)
- ▶ [Drainage Patterns](#)
- ▶ [Esker](#)
- ▶ [Inverted Channel](#)
- ▶ [Lava Channel](#)
- ▶ [Lava Flow](#)
- ▶ [Linear Ridge Types \(Various Origins\)](#)
- ▶ [Meander](#)
- ▶ [Ridge Belt \(Venus\)](#)
- ▶ [Wrinkle Ridge](#)

References

Banks ME, Lang NP, Kargel JS, McEwen AS, Baker VR, Grant JA, Pelletier JD, Strom RG (2009) An analysis of sinuous ridges in the southern Argyre Planitia, Mars using HiRISE and CTX images and MOLA data. *J Geophys Res* 114:E09003. doi:10.1029/2008JE003244

- Benn D, Evans D (1998) *Glaciers and glaciation*. Wiley, New York, 734 pp
- Bernhardt H, Hiesinger H, Reiss D, Ivanov M, Erkeling G (2013) Putative eskers and new insights into glaciofluvial depositional settings in southern Argyre Planitia, Mars. *Planet Space Sci* 85:261–278
- Brennand TA (2000) Deglacial meltwater drainage and glaciodynamics: Inferences from Laurentide eskers. *Can Geomorphol* 32:263–293. doi:10.1016/S0169555X(99)00100-2
- Burr DM, Enga M-T, Williams RME, Zimbelman JR, Howard AD, Brennand TA (2009) Pervasive aqueous paleoflow features in the Aeolis/Zephyria Plana region, Mars. *Icarus* 200(1):52–76
- Burr DM, Williams RME, Wendell KD, Chojnacki M, Emery JP (2010) Inverted fluvial features in the Aeolis/Zephyria Plana region, Mars: formation mechanism and initial paleodischarge estimates. *J Geophys Res* 115:E07011. doi:10.1029/2009JE003496
- Carr MH, Evans N (1980) *Images of Mars: the Viking extended mission*. U.S. Government Printing Office, Washington, DC
- Coleman N (2011) Phaenna Dorsum, an esker on Mars: insights from THEMIS and HiRISE images and MOLA data. 42nd Lunar Planet Sci Conf, abstract #1906, Houston
- Easterbrook DJ (1999) *Surface processes and landforms*. Prentice Hall, Upper Saddle River, 352 pp
- Ghatan GJ, Head JW III (2004) Regional drainage of meltwater beneath a Hesperian-aged south circumpolar ice sheet on Mars. *J Geophys Res* 109:E07006. doi:10.1029/2003JE002196
- Golombek MP, Plescia JB, Franklin BJ (1991) Faulting and folding in the formation of planetary wrinkle ridges. *Proc Lunar Planet Sci Conf 21st*, Houston, pp 679–693

- Golombek MP, Anderson FS, Zuber MT (2000) Martian wrinkle ridges topography: evidence for subsurface faults from MOLA. *Lunar Planet Sci [CD-ROM] XXXI*, abstract #1294, Houston
- Head JW, Pratt S (2001) Extensive Hesperian-aged south polar ice sheet on Mars: evidence for massive melting and retreat, and lateral flow and ponding of meltwater. *J Geophys Res* 106:12,275–12,299. doi:10.1029/2000JE001359
- Head JW, Wilson L, Dickson JL, Neukum G (2006) The Huygens-Hellas giant dike system on Mars: implications for Late Noachian-Early Hesperian volcanic resurfacing and climatic evolution. *Geology* 34:285–288. doi:10.1130/G22163.1
- Hiesinger H, Head JW (2002) Topography and morphology of the Argyre basin, Mars: implications for its geologic and hydrologic history. *Planet Space Sci* 50:939–981. doi:10.1016/S0032-0633(02)00054-5
- Kargel JS (2004) Mars: a warmer wetter planet. Springer, Chichester, 550 pp
- Kargel JS, Strom RG (1992) Ancient glaciation on Mars. *Geology*. 20, 3–7. doi:10.1130/0091-7613(1992)020<0003:AGOM>2.3.CO;2
- Kite ES (2012) Evidence for melt-fed meandering rivers in the Gale-Aeolis-Zephyria region, Mars. 43rd Lunar Planet Sci Conf, abstract #2778, Houston
- Kress A, Head JW, Fassett CI (2010) Ridges in the Dorsa Argentea Formation: geomorphology and age assessment from buffered crater counting. 41st Lunar Planet Sci Conf, abstract #2355, Houston
- Lefort A, Burr DM, Beyer RA, Howard AD (2012) Inverted fluvial features in the Aeolis-Zephyria Plana, western Medusae Fossae Formation, Mars: evidence for post-formation modification. *J Geophys Res* 117:24
- Lucchitta BK, Ferguson HM, Summers C (1986) Sedimentary deposits in the northern lowland plains, Mars. *J Geophys Res* 91(B13):E166–E174.
- Mabbutt JA, Sullivan MF (1968) The formation of longitudinal dunes: evidence from the Simpson desert. *Aust Geogr* 10:483–487. doi:10.1080/00049186808702520
- Nußbaumer J (2007) Possible sea sediments due to glaciofluvial activity in Elysium Planitia, Mars. Seventh international conference on Mars, abstract #3176
- Pain CF, Clarke JDA (2009) Relief inversion: Australian analogs of a common feature of martian landscape evolution. 40th Lunar Planet Sci Conf, abstract #1100, Houston
- Pain CF, Clarke JDA, Thomas M (2007) Inversion of relief on Mars. *Icarus* 190:478–491. doi:10.1016/j.icarus.2007.03.017
- Parker TJ, Pieri DC, Saunders RS (1986) Morphology and distribution of sinuous ridges in central and southern Argyre: reports of the planetary geology and geophysics program. NASA Tech Memo 88383:468–470
- Pollard D (1987) Elementary fracture mechanics applied to the structural interpretation of dykes. In: Hallsand CH, Fahrig WF (eds) Mafic dyke swarms, vol 34, Geological Association of Canada special paper. Geological Association of Canada, St. John's, pp 5–24
- Ruff SW, Greeley R (1990) Sinuous ridges of the south polar region, Mars: possible origins. 21st Proc Lunar Planet Sci Conf, Houston, pp 1047–1048
- Shreve RL (1985) Esker characteristics in terms of glacier physics, Katahdin esker system, Maine. *Geol Soc Am Bull* 96:639–646. doi:10.1130/00167606(1985)96<639:ECITOG>2.0.CO;2
- Theilig EE (1986) Formation of pressure ridges and emplacement of compound basaltic lava flows. PhD thesis, Arizona State University, Tempe
- Williams RME, Edgett KS (2005) Valleys in the Martian Rock Record. 36th Lunar Planet Sci Conf, abstract #1099, Houston

Sinuuous Rille

Goro Komatsu¹ and Henrik Hargitai²

¹International Research School of Planetary Sciences, Università d'Annunzio, Pescara, Italy

²NASA Ames Research Center / NPP, Moffett Field, CA, USA

Definition

Linear, meandering features interpreted to be the remains of channels formed by lava that erupted in effusive, high-volume volcanic events (Hurwitz et al. 2012).

Category

A type of ► [lava channel](#)

A type of ► [rille](#)

Synonyms

[Arcuate rille](#); Large sinuous rille; Serpentine cleft (obsolete)