



Contents lists available at ScienceDirect

Molecular Phylogenetics and Evolution

journal homepage: www.elsevier.com/locate/ympevMolecular phylogeny and evolution of the cone snails
(Gastropoda, Conoidea)Q1 N. Puillandre^{a,*}, P. Bouchet^b, T.F. Duda^{c,d}, S. Kaufenstein^e, A.J. Kohn^f, B.M. Olivera^g, M. Watkins^h,
C. Meyerⁱ^a Muséum National d'Histoire Naturelle, Département Systématique et Evolution, ISyEB Institut (UMR 7205 CNRS/UPMC/MNHN/EPHE), 43, Rue Cuvier, 75231 Paris, France^b Muséum National d'Histoire Naturelle, Département Systématique et Evolution, ISyEB Institut (UMR 7205 CNRS/UPMC/MNHN/EPHE), 55, Rue Buffon, 75231 Paris, FranceQ2 ^c Department of Ecology and Evolutionary Biology and Museum of Zoology, University of Michigan, 1109 Geddes Avenue, Ann Arbor, MI 48109, USA^d Smithsonian Tropical Research Institute, Apartado 0843-03092, Balboa, Ancon, Panama^e Institute of Legal Medicine, University of Frankfurt, Kennedyallee 104, D-60596 Frankfurt, Germany^f Department of Biology, Box 351800, University of Washington, Seattle, WA 98195, USA^g Department of Biology, University of Utah, 257 South 1400 East, Salt Lake City, UT 84112, USA^h Department of Pathology, University of Utah, 257 South 1400 East, Salt Lake City, UT 84112, USAⁱ Department of Invertebrate Zoology, National Museum of Natural History, Smithsonian Institution, Washington, DC 20013, USA

ARTICLE INFO

Article history:

Received 22 January 2014

Revised 8 May 2014

Accepted 16 May 2014

Available online xxxxx

Keywords:

Ancestral state reconstruction

Conidae

Conus

COI

16SrRNA

12SrRNA

ABSTRACT

We present a large-scale molecular phylogeny that includes 320 of the 761 recognized valid species of the cone snails (*Conus*), one of the most diverse groups of marine molluscs, based on three mitochondrial genes (COI, 16S rDNA and 12S rDNA). This is the first phylogeny of the taxon to employ concatenated sequences of several genes, and it includes more than twice as many species as the last published molecular phylogeny of the entire group nearly a decade ago. Most of the numerous molecular phylogenies published during the last 15 years are limited to rather small fractions of its species diversity. Bayesian and maximum likelihood analyses are mostly congruent and confirm the presence of three previously reported highly divergent lineages among cone snails, and one identified here using molecular data. About 85% of the species cluster in the single Large Major Clade; the others are divided between the Small Major Clade (~12%), the *Conus californicus* lineage (one species), and a newly defined clade (~3%). We also define several subclades within the Large and Small major clades, but most of their relationships remain poorly supported. To illustrate the usefulness of molecular phylogenies in addressing specific evolutionary questions, we analyse the evolution of the diet, the biogeography and the toxins of cone snails. All cone snails whose feeding biology is known inject venom into large prey animals and swallow them whole. Predation on polychaete worms is inferred as the ancestral state, and diet shifts to molluscs and fishes occurred rarely. The ancestor of cone snails probably originated from the Indo-Pacific; rather few colonisations of other biogeographic provinces have probably occurred. A new classification of the Conidae, based on the molecular phylogeny, is published in an accompanying paper.

© 2014 Elsevier Inc. All rights reserved.

1. Introduction

A molecular phylogeny of a taxon is a hypothesis of its evolutionary patterns and processes, and a framework for clarifying its classification. A strongly supported molecular-based phylogenetic

tree can help to estimate diversification rates, divergence times, ancestral distributions, and community compositions, and it can provide evidence relevant to taxonomic hypotheses. However, many taxa of considerable evolutionary and practical importance have very incomplete species-level molecular phylogenies, based on few species with appropriate genes sequenced, not representative of the diversity of the group, or largely unresolved.

The gastropod family Conidae, commonly known as cone snails, includes the widely distributed, mainly tropical *Conus*, a relatively young genus first appearing in the Early Eocene. The family Conidae is one of the most diverse in the marine environment (Kohn, 1990), with 761 valid Recent species currently (21th January 2014) recognized in the World Register of Marine Species (WoRMS,

* Corresponding author. Address: Puillandre Nicolas, Muséum National d'Histoire Naturelle, Département Systématique et Evolution, ISyEB Institut (UMR 7205 CNRS/UPMC/MNHN/EPHE), 43, Rue Cuvier, 75231 Paris, France. Fax: +33 1 40 79 38 44.

E-mail addresses: puillandre@mnhn.fr (N. Puillandre), pbouchet@mnhn.fr (P. Bouchet), tfduda@umich.edu (T.F. Duda), kaufenstein@em.uni-frankfurt.de (S. Kaufenstein), kohn@uw.edu (A.J. Kohn), olivera@biology.utah.edu (B.M. Olivera), maren.watkins@hsc.utah.edu (M. Watkins), MeyerC@si.edu (C. Meyer).

2013) and new species descriptions are published each year. It is also the most rapidly diversifying marine molluscan genus (Kohn, 1990; Stanley, 2008, 1979) and is ecologically important especially in coral reef environments where up to 36 species, specialized predators on worms, other molluscs, and fishes, co-occur on a single reef (Kohn, 2001).

These latter attributes all likely relate to the extremely diverse peptide venoms that cone snails use to overcome and capture prey and that also make the Conidae a most promising source for neurobiologic and therapeutic applications (Biass et al., 2009; Lluisma et al., 2012; Olivera, 2006). Molecular geneticists, evolutionary biologists, pharmacologists, and toxicologists thus all require a robust phylogeny and taxonomy for this group. New drug discovery is particularly likely to benefit from a clear phylogenetic context that permits targeting divergent lineages and thus potential novel toxins (Biggs et al., 2010; Olivera, 2006).

Since the first published molecular phylogenies for *Conus* (Duda and Palumbi, 1999a; Monje et al., 1999), many others have appeared, either for the cone snails and their relatives (Puillandre et al., 2011a, 2008), or subgroups (Bandyopadhyay et al., 2008; Biggs et al., 2010; Cunha et al., 2008, 2005; Duda and Kohn, 2005; Duda and Palumbi, 2004, 1999b; Duda and Rolán, 2005; Duda et al., 2008, 2001; Espino et al., 2008; Espiritu et al., 2001; Kaufenstein et al., 2011, 2004; Kraus et al., 2012, 2011; Nam et al., 2009; Pereira et al., 2010; Puillandre et al., 2010; Williams and Duda, 2008). The most comprehensive includes 138 species, ca. 20% of the known diversity of cone snails (Duda and Kohn, 2005).

Ancestral states of morphological, ecological, and developmental traits have been inferred from some of these phylogenetic studies (Cunha et al., 2005; Duda and Palumbi, 2004, 1999a; Duda et al., 2001; Kohn, 2012) and lineages of toxins with unknown functions identified (Puillandre et al., 2010). However, these authors generally agree that available phylogenies are not complete enough to robustly test hypotheses about how natural history attributes relate to factors that could explain the evolutionary history of the cone snails.

Cone snails experienced several episodes of enhanced diversification since their origin (Duda and Kohn, 2005; Kohn, 1990; Williams and Duda, 2008) and exhibit the highest rate of diversification of any marine gastropod or bivalve group (Stanley, 1979), a remarkable radiation that was likely driven by ecological speciation (Stanley, 2008). Currently they occur mostly throughout tropical regions of our world's oceans, although the overwhelming majority of species, both fossil and recent, are restricted to single marine biogeographic provinces (e.g., Indo-Pacific, East Pacific, West Atlantic, East Atlantic and South Africa) (Duda and Kohn, 2005). Results from previous molecular phylogenetic analysis suggest that three major lineages arose shortly after the origination of the group: one with extant species mostly occurring in the present-day Indo-Pacific, another with most extant species found in the present-day East Pacific and West Atlantic, and a third that today consists of a single species that is restricted to the East Pacific (Duda and Kohn, 2005). Based on the geographic distributions of species in these clades, there has apparently been very little interchange of lineages among the major marine biogeographic provinces (Duda and Kohn, 2005; Duda and Lessios, 2009). Nonetheless, this work included analyses of sequence data from only one-fifth of the recognized cone snail species and the authors caution that their results are preliminary and the patterns that they observed may change with more complete taxonomic coverage (Duda and Kohn, 2005). Here we examine the biogeography of this group with a much more exhaustive taxonomic and geographic coverage than available previously.

While most cone snail species are vermivorous (i.e., feed on a variety of worms, including mostly polychaetes but also hemichordates), others are either piscivorous or molluscivorous, with few

species exhibiting more than one feeding mode. In addition, diets tend to be species-specific, especially in areas where multiple species co-occur (Kohn and Nybakken, 1975; Kohn, 1968, 1959). A previous investigation of the evolution of diets of cone snails reports that major shifts in diet were relatively rare (Duda et al., 2001), although piscivory originated at least twice (Duda and Palumbi, 2004). However, as with all past molecular phylogenetic studies of this group, these studies relied on limited taxonomic coverage. Analyses of a much larger dataset may provide additional insights of the evolution of diet that were not available previously.

We propose here a molecular phylogeny of the Conidae sensu Bouchet et al. (2011), based on three mitochondrial genes (COI, 12S, 16S) sequenced for 320 species (>40% of the known species diversity), and including representatives from the main lineages defined in previous DNA studies: *C. californicus*, the Small Major Clade and the Large Major Clade (Duda and Kohn, 2005). Tucker and Tenorio (2009) classified the Small Major Clade as the Family Conilithidae – it included *C. californicus* – and the Large Major Clade as the family Conidae (see Table 1 for a comparison of the recent classifications of cone snails and related species). We then analyse the evolution of three character sets: diet category, biogeographic province and toxin diversity. Previous molecular phylogenetic studies analysed the main evolutionary diet shifts (from worms to fishes or molluscs) (Duda and Kohn, 2005; Duda and Palumbi, 2004; Duda et al., 2001), but never on such a large dataset. Disentangling the evolution of these traits throughout this hyperdiverse taxon should help to generate and critically examine hypotheses of the factors that promoted its exceptional ecological and evolutionary diversification.

2. Material and methods

2.1. Sampling

The analysed dataset is the result of a joint effort from several museums and laboratories. The Museum National d'Histoire Naturelle (MNHN), Paris provided 493 specimens collected during several recent expeditions in the Indo-Pacific (details are provided in Supplementary data 1); 88 specimens were collected during the CONCO project in New Caledonia and South Africa, and processed in the University of Frankfurt; 319 specimens were collected and processed by CPM, TFD and BMO or their lab groups. Additionally, sequences from 1207 vouchers were downloaded from GenBank and added to the datasets. Specimens were morphologically identified by the authors and by Eric Monnier, Loïc Limpalaër and Manuel Tenorio; for the GenBank sequences, we followed the identifications provided by the respective authors.

Nine vouchers from GenBank were only identified at the genus level (as "*Conus* sp."). For various reasons, the voucher specimens were not available for all the non-GenBank specimens, but in some cases digital images of shells were available (unpublished data) for confirmation of identifications. In most cases, the morphological identification was double- or triple-checked by several taxonomic specialists of the group. We followed the cone snail taxonomy provided in the World Register of Marine Species (WoRMS, version of 14th May 2013) in applying species names to the vouchers: only species names considered valid in WoRMS were applied. All other species-level names that could have been attributed to the specimens were considered subspecies, form or variety names, or as synonyms. In total, the 2107 specimens were attributed to 320 species names, representing >40% of the total number of cone snail species considered valid in WoRMS (Supplementary data 2). Additionally, we recognize nine morphospecies as potentially corresponding to undescribed species (numbered from a to i). In total, 1740 COI, 928 16S and 599 12S sequences were analysed, of which 1523 are newly published (Supplementary data 1).

Table 1

Comparison of recent classifications of cone snails and related species. In this article, the cone snails are restricted to the Conidae sensu Bouchet et al. (2011).

Taylor et al. (1993)	Bouchet and Rocroi (2005)	Duda and Kohn (2005)	Tucker and Tenorio (2009)	Bouchet et al. (2011)	New classification
Coninae	Coninae	Large Major Clade	Taranteconidae Conidae	Conidae	Conidae
		Small Major Clade	Conolithidae	Conidae	<i>Conus</i> <i>Californiconus</i> <i>Conasprella</i> <i>Profundiconus</i>
Conorbinae	Conorbinae		Hemiconidae ^a Conorbidae	Conorbidae	
			Cryptoconidae	Borsoniidae Mangeliidae	
Clathurellinae					

^a Fossil taxa.

205 Outgroups were chosen according to Puillandre et al. (2011a). To
206 test the monophyly of the Conidae, representatives from related
207 groups within the superfamily Conoidea were included: *Benthofascis*
208 *lozoueti* (Conorbidae), *Bathytoma neocaledonica*, *Borsonia* sp., *Genota*
209 *mitriformis* and *Microdrillia* cf. *optima* (Borsoniidae), *Clathurella*
210 *nigrotincta* and *Etrema* cf. *tenera* (Clathurellidae), *Mitromorpha*
211 *metula* and *Lovellona atramentosa* (Mitromorphidae), *Anticlinurina*
212 sp. and *Benthomangelia* cf. *trophonoidea* (Mangeliidae) and
213 *Eucyclotoma cymatodes* and *Thatcheria mirabilis* (Raphitomidae).
214 Less closely related genera were used as more distant outgroups:
215 *Turris babylonia* (Turridae), and *Terebra textilis* (Terebridae). The
216 non-conoidean *Harpa kajiyamai* (Harpidae) is the most distant
217 outgroup.

218 2.2. DNA extraction and sequencing

219 Although all laboratories mentioned above utilized the same
220 primer pairs [12S1/12S3 (Simon et al., 1991), 16Sar/16Sbr
221 (Palumbi, 1996) and LCO1490/HCO2198 (Folmer et al., 1994)]
222 and all amplification products were sequenced in both directions,
223 our laboratories used a variety of DNA extraction protocols, ampli-
224 fication conditions and sequencing approaches to obtain sequences
225 of regions of the mitochondrial 12S, 16S and COI genes. For brevity,
226 only methodologies employed at the MNHN are described here.
227 DNA was extracted using 6100 Nucleic Acid Prepstation system
228 (Applied Biosystems), the Epmotion 5075 robot (Eppendorf) or
229 DNeasy_96 Tissue kit (Qiagen) for smaller specimens, following
230 the manufacturers' recommendations. All PCR reactions were per-
231 formed in 25 µl, containing 3 ng of DNA, 1X reaction buffer,
232 2.5 mM MgCl₂, 0.26 mM dNTP, 0.3 mM each primer, 5% DMSO,
233 and 1.5 units of Qbiogene Q-Bio Taq. Amplification consisted of
234 an initial denaturation step at 94 °C for 4 min, followed by 35
235 cycles of denaturation at 94 °C for 30 s, annealing at 54 °C for
236 12S gene, 52 °C for 16S and 50 °C for COI, followed by extension
237 at 72 °C for 1 min. The final extension was at 72 °C for 5 min.
238 PCR products were purified and sequenced by sequencing facilities
239 (Genoscope and Eurofins). Specimens and sequences were depos-
240 ited in GenBank (Supplementary data 1 and 2).

241 2.3. Phylogenetic analyses

242 Sequences were manually (COI gene) or automatically aligned
243 using Muscle 3.8.31 (Edgar, 2004) (16S and 12S genes). Preliminary
244 analyses were performed for each gene separately using the Neighbor-
245 Joining algorithm (with a K2P model) implemented in MEGA 4
246 (Tamura et al., 2007) to remove obviously misidentified or contam-
247 inated sequences from the dataset. One voucher (GU227112.1 and
248 GU226998.1) identified as *Conus* sp. in GenBank actually corre-
249 sponded to a member of the Raphitomidae, and eight others were
250 obviously misidentified or contaminated (the sequence clustered

with a non-phylogenetically related species: AF126172.1 was iden-
251 tified as *C. monachus* but clustered with *C. radiatus*; AF174157.1
252 was identified as *C. circumactus* but clustered with *C. parius*;
253 AF036532.1 was identified as *C. distans* but clustered with *C. band-*
254 *anus*; AF174169.1 was identified as *C. frigidus* but clustered with *C.*
255 *sanguinolentus*; AJ717598.1 was identified as *C. magus* but clus-
256 tered with *C. furvus*; AF174184.1 was identified as *C. muriculatus*
257 but clustered with *C. striatellus*; AB044276.1 was identified as *C.*
258 *praecellens* but clustered with *C. boholensis* and AY726487.1 was
259 identified as *C. ventricosus* but clustered with *C. venulatus*). Addi-
260 tionally, the unique sequence labelled as *C. centurio* (AY382002.1)
261 was also removed from the dataset, as it also corresponded to a
262 misidentified specimen (M. Tenorio, pers. com.). Finally, 28 short
263 COI sequences from GenBank (<200 bp) were also removed from
264 the dataset; all corresponded to species represented by several
265 other specimens in the final dataset. Because COI is generally more
266 variable than 16S and 12S gene regions, COI is usually more valu-
267 able for specimen identification and distinction of closely related
268 species. It was thus used to assign unidentified specimens from
269 GenBank and to point at species-level issues. We analysed the
270 COI dataset with ABGD (Puillandre et al., 2012b). This method
271 relies on genetic distances only and seeks to identify in the distri-
272 bution of genetic distances a gap that would correspond to a
273 threshold between intra-specific and inter-specific distances. The
274 defaults parameters provided on the web version of ABGD (version
275 of March, 2014) were applied.

276 Each gene was analysed independently to check for incongruen-
277 cy between trees. The best model of evolution was selected for
278 each gene and for each codon position of the COI gene using Mod-
279 elgenerator V.85 (Keane et al., 2006) under the Hierarchical Likeli-
280 hood Ratio Tests (with four discrete gamma categories):
281 GTR + I + G was always identified as the best model, with $I = 0.98,$
282 $0.85, 0.66, 0.58$ and 0.49 and $\alpha = 0.66, 0.25, 0.24, 0.34$ and 0.16
283 for the COI (first, second and third position of the codon), 16S
284 and 12S genes respectively. Maximum Likelihood analyses (ML)
285 were performed using RAxML 7.0.4 (Stamatakis, 2006), with a
286 GAMMAI model for each gene. Three partitions were defined for
287 the COI gene, corresponding to each position of the codon. RAxML
288 analyses were performed on the Cipres Science Gateway ([http://](http://www.phylo.org/portal2/)
289 www.phylo.org/portal2/) using the RAxML-HPC2 on TG Tool. Accu-
290 racy of the results was assessed by bootstrapping (1000 replicates).

291 After visual inspection of the absence of supported incongruen-
292 cies between the independent trees, a concatenated dataset was
293 prepared by including only one representative of each species
294 name represented in the independent gene datasets. When several
295 specimens were available for a single named species, the preferred
296 specimen had the highest number of genes and with, if possible, an
297 available voucher. Three unnamed morphospecies and 16 species
298 were represented by specimens sequenced for only one gene: they
299 were excluded from the concatenated dataset. In several cases,
300

specimens of a named species were found not to be monophyletic (see Section 3). In all of these cases, the different specimens remained closely related and only one was included in the final dataset. Finally, 326 specimens (including 16 outgroups) were included in the concatenated dataset. ML analyses were performed as described before, with five partitions (three codon positions of the COI gene, 12S and 16S). Bayesian Analyses (BA) were performed running two parallel analyses in MrBayes (Huelsenbeck et al., 2001), consisting each of eight Markov chains of 200,000,000 generations each with a sampling frequency of one tree each thousand generations. The number of swaps was set to five, and the chain temperature at 0.02. Similarly to the ML approach, unlinked models (each with six substitution categories, a gamma-distributed rate variation across sites approximated in four discrete categories and a proportion of invariable sites) were applied for each partition. Convergence of each analysis was evaluated using Tracer 1.4.1 (Rambaut and Drummond, 2007), and analyses were terminated when ESS values were all superior to 200. A consensus tree was then calculated after omitting the first 25% trees as burn-in.

The COI gene is more variable than 16S or 12S, COI sequences were available for the largest number of morphospecies, and many of these were represented by several individuals. For these reasons, COI gene trees were used to explore the species-level α -taxonomy of cone snails.

2.4. Character evolution

The evolution of two characters was analysed by mapping their character states on the Bayesian phylogenetic tree obtained with the concatenated dataset: geographic distribution (five states: East Atlantic; East Pacific; Indo-Pacific; South Africa; West Atlantic) and prey type (four states: worms; fishes; molluscs; worms, fishes, crustaceans and molluscs). The prey type was based on direct observation for 100 species, was inferred from the radula type for 103 species and remains unknown for 107 species (<http://biology.burke.washington.edu/conus/>). It should be noted that the vermivorous type may refer to preys from different phyla. However, among the 53 species for which the vermivorous diet was based on direct observation, only one species (*C. leopardus*) is known to mainly feed on a non-polychaete (enteropneust *Ptychodera* – Kohn, 1959). The evolution of the prey type was assessed with Mesquite V2.74 (Maddison and Maddison, 2009), using the option 'tracing character history' and the likelihood ancestral reconstruction method. The BBM (Bayesian Binary MCMC) method implemented in RASP (Yu et al., 2013, 2010) was used to reconstruct ancestral ranges for each node. To account for uncertainties, the 10,000 last trees obtained with the Bayesian analyses were loaded. Analyses were run with default parameters, except the number of cycles (set to 500,000) and the root distribution (set to "wide").

3. Results

3.1. Species-level phylogeny

Final alignments included 658 bp, 457 bp and 553 bp for the COI, 16S and 12S genes respectively. Single-gene analyses produced poorly resolved trees (Supplementary data 3–5), with only a few clades supported. Trees constructed with the concatenated dataset also recovered these clades, albeit with higher support. However, single-gene trees are useful to identify unknown specimens and for evaluation of species-level taxonomy of cone snails.

The eight remaining unidentified *Conus* from GenBank (after one was discarded from the dataset because it was not a cone snail) were identified following a barcoding approach in which an

unknown specimen is identified based on the identity of its closest neighbour in the tree (Austerlitz et al., 2009): one specimen which consisted of an egg capsule collected in the Philippines (Puillandre et al., 2009) matched *C. australis*; five other specimens (Cunha et al., 2008, 2005) belonged to the *C. venulatus* complex; another matched *C. capitaneus* (Dang et al., unpublished); and the last corresponded to *C. tabidus* (Cunha et al., 2005).

In addition to the phylogenetic analyses, the ABGD method was also used to interpret the species complexes. In the vicinity of the barcode gap, the ABGD method constantly returns a partition in 343 primary species hypotheses (PSH). Because it is not the primary objective of this article, and because most species are represented by one or a few specimens only, we will not discuss in detail the ABGD results, but instead identify the problematic cases and suggest that they deserve more in-depth analyses. In numerous cases several species names were mixed in a single clade. For most of them (*C. aulicus*/*C. episcopatus*/*C. magnificus*, *C. dalli*/*C. canonicus*, *C. frigidus*/*C. flavidus*, *C. jaspideus*/*C. mindanus*, *C. mucronatus*/*C. sutanorcum*, *C. muriculatus*/*C. floridulus*, *C. sulcatus* complex, *C. striatellus*/*C. planorbis*/*C. ferrugineus*, *C. ximenes*/*C. mahogani*, *C. loyaltiensis*/*C. kanakinus*/*C. vaubani*, *C. pennaceus*/*C. crocatus*/*C. lohri*, *C. bandanus*/*C. marmoreus*, *C. pagodus*/*C. aff. eucoronatus* and *C. tessulatus*/*C. eburneus*/*C. suturatus*/*C. sandwichensis*) correlating these preliminary results with morphological, geographical or bathymetrical variation would require analyses of additional specimens. Nonetheless, in some cases we can propose preliminary hypotheses to interpret the results. *Conus arenatus* occurs in two clades, one corresponding to the form *aequipunctatus* and the other being mixed with *C. pulcherrimus*; ABGD places these two lineages in two different PSH. In the case of *C. lividus* and *C. sanguinolentus* (only two specimens from GenBank, one for each name), specimens may have been incorrectly identified as *C. lividus* or *C. sanguinolentus* or the morphological criteria used to delimit these species are inappropriate. For members of the *C. teramachii*/*C. smirna*/*C. aff. profundorum*/*C. n. sp. g* complex (Fig. 1a), four clades are recognized: two restricted to New Caledonia (one including *C. n. sp. g* and the second containing specimens with *C. profundorum*-like shells), another to Madagascar (it would correspond to the form *neotorquatus* of *C. teramachii*), and one that occurs in the Philippines, Solomon Islands, Papua-New Guinea and New Caledonia (with *C. smirna* and *C. teramachii*-like shells). In this complex ABGD recognizes only three PSH, merging the *C. profundorum*-like shells and the Philippines/Solomon Islands/Papua-New Guinea/New Caledonia clade in a single PSH. Also, several species complexes were revealed that have been treated previously (*C. sponsalis* complex in Duda et al. (2008), *C. orbignyi* complex in Puillandre et al. (2011b), *C. ventricosus* complex in Cunha et al. (2005) and Duda and Rolán (2005) and *C. venulatus* complex in Cunha et al. (2005, 2008), and Duda and Rolán (2005), but our results suggest that their taxonomy is not fully resolved yet, and that numerous cryptic species still need formal description.

Sequences of specimens representing 11 species names were not monophyletic and included two (*C. miliaris*, *C. glans*, *C. longurionis*, *C. mappa*, *C. quercinus*, *C. villepini*, *C. generalis*, *C. regius*) or three (*C. australis*, *C. daucus*, *C. imperialis*) lineages. All these lineages correspond to different PSH as defined by ABGD, the high genetic distances thus suggesting that they may belong to different species. In some cases, one of the lineages is geographically (e.g., *C. longurionis*) or bathymetrically (e.g., two of the *C. imperialis* lineages – Fig. 1b) distinct. In other cases, one is associated with a previously recognized subspecies or forms (e.g., *granarius* for one lineage of *C. mappa*, *fulgetrum* for *C. miliaris* – Fig. 1c, *maldivus* for *C. generalis*, *abbotii* for *C. regius*, *gabryae* for *C. australis*, *boui* for *C. daucus*, and *fusctaus* for *C. imperialis*). The two lineages of *C. quercinus* (one being identified as "aff *quercinus*") were not found with the 12S and 16S genes. In several other cases, divergent lineages within a single

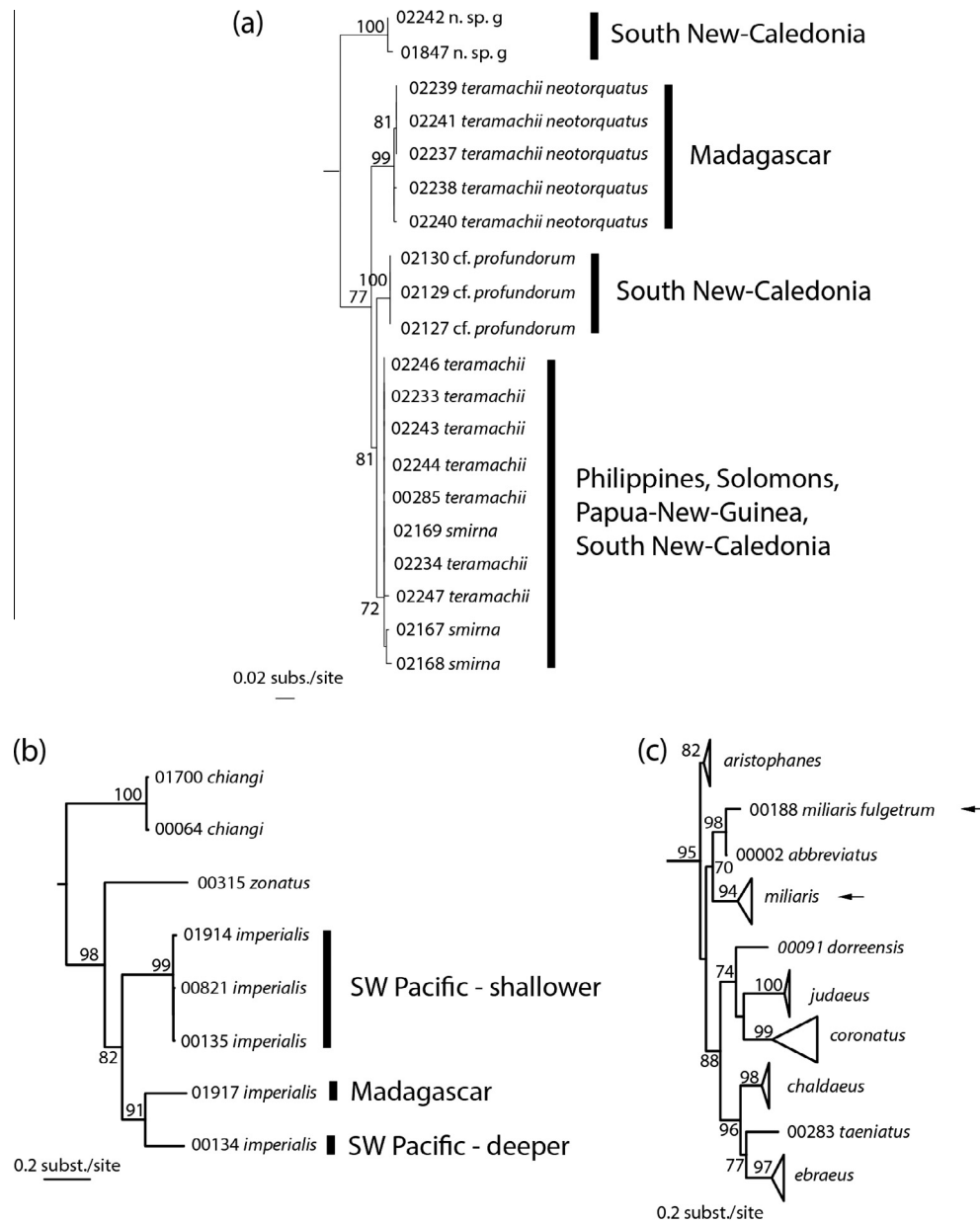


Fig. 1. Three sub-parts of the COI Bayesian tree that illustrate discrepancies between COI diversity and morphological diversity. (a) *C. teramachii* complex. (b) Putative cryptic species in *C. imperialis*. (c) *C. miliaris* complex (black arrows).

morphospecies were revealed, although the corresponding morphospecies remained monophyletic, thus suggesting the presence of cryptic species (e.g., *C. consors*), some of which are associated with a previously described subspecies or form (e.g. *archiepiscopus* for *C. textile*). ABGD defines two PSH associated with the name *C. consors* and three with the name *C. textile*. Finally, in a few cases (e.g., *C. recurvus* and *C. virgatus*), two species names shared identical or very similar sequences, suggesting synonymy; ABGD places them in a single PSH. However, the low number of specimens sequenced for each species name prevents adequate evaluation of this hypothesis.

3.2. Phylogeny above the species level

Analyses of the concatenated dataset revealed four main highly divergent clades (Fig. 2, Supplementary data 6). Three of them correspond to previously reported lineages with molecular data: one

with only one species (*C. californicus*), a second corresponding to the Small Major Clade (SMC – *sensu* (Duda and Kohn, 2005) and roughly to the Conilithinae (*sensu* Tucker and Tenorio, 2009), and a third, the most species-rich, corresponding to the Large Major Clade (LMC – *sensu* (Duda and Kohn, 2005) and roughly to the Conidae (*sensu* Tucker and Tenorio, 2009). A fourth main clade was found here for the first time with DNA characters. It roughly corresponds to *Profundiconus sensu* Tucker and Tenorio (2009) and includes a number of deep-water species from the Indo-Pacific that were not examined in previous molecular phylogenetic analyses. *Profundiconus* is sister-group to all the other Conidae, but this relationship is not supported. The inclusion of *Profundiconus* in Conidae thus remains doubtful, although the morphological characters would place it in cone snails.

Within the SMC and LMC, reconstructed phylogenies show several well-resolved subclades that generally correspond to genus-level groups defined by Tucker and Tenorio (2009). However, most

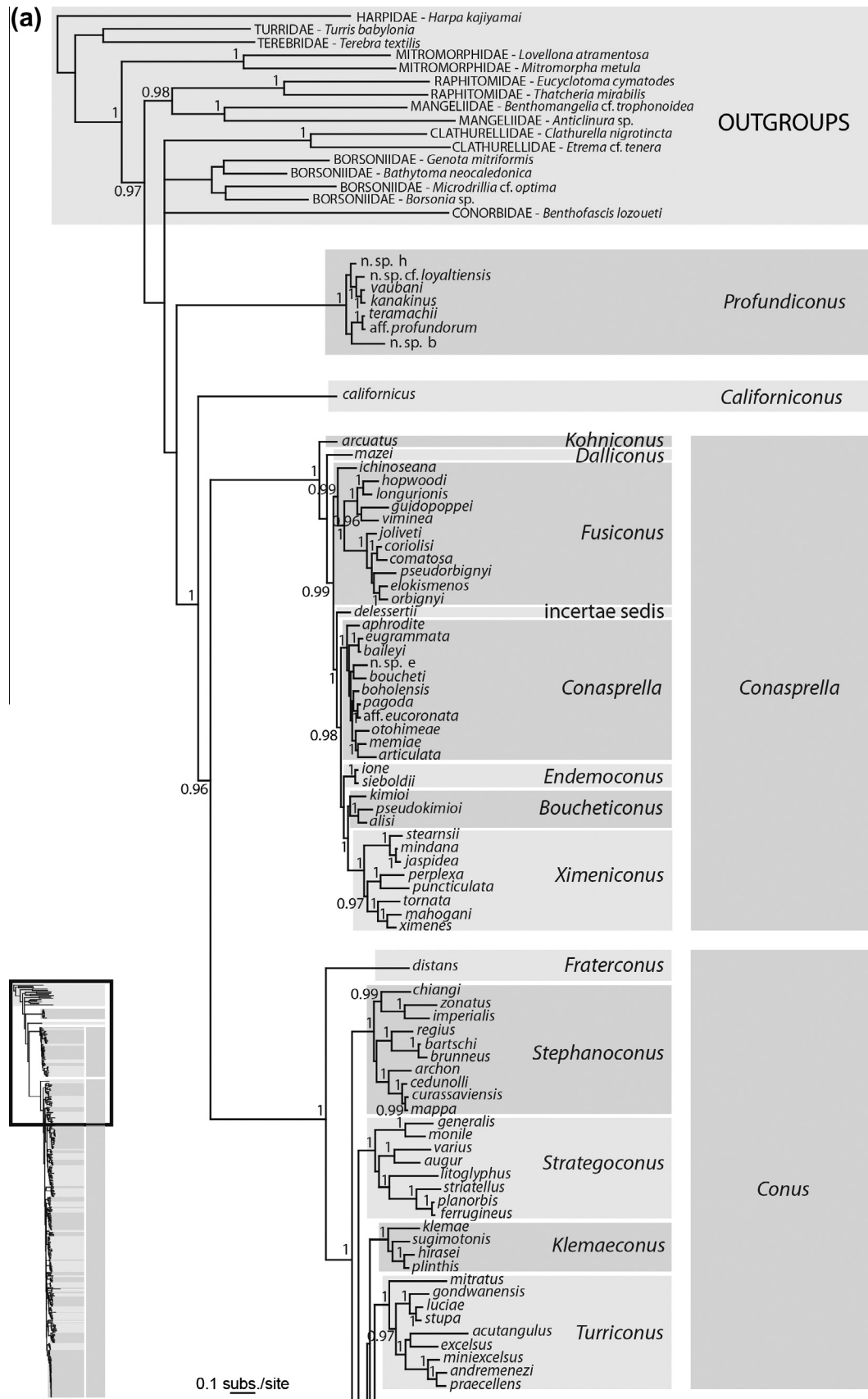


Fig. 2. Bayesian tree based on a concatenation of the COI, 16S and 12S genes for the reduced dataset of 326 specimens. Posterior probabilities (>0.95) are shown for each node. Genus and subgenus names follow the classification based on the phylogenetic tree and published in Puillandre et al. (in press).

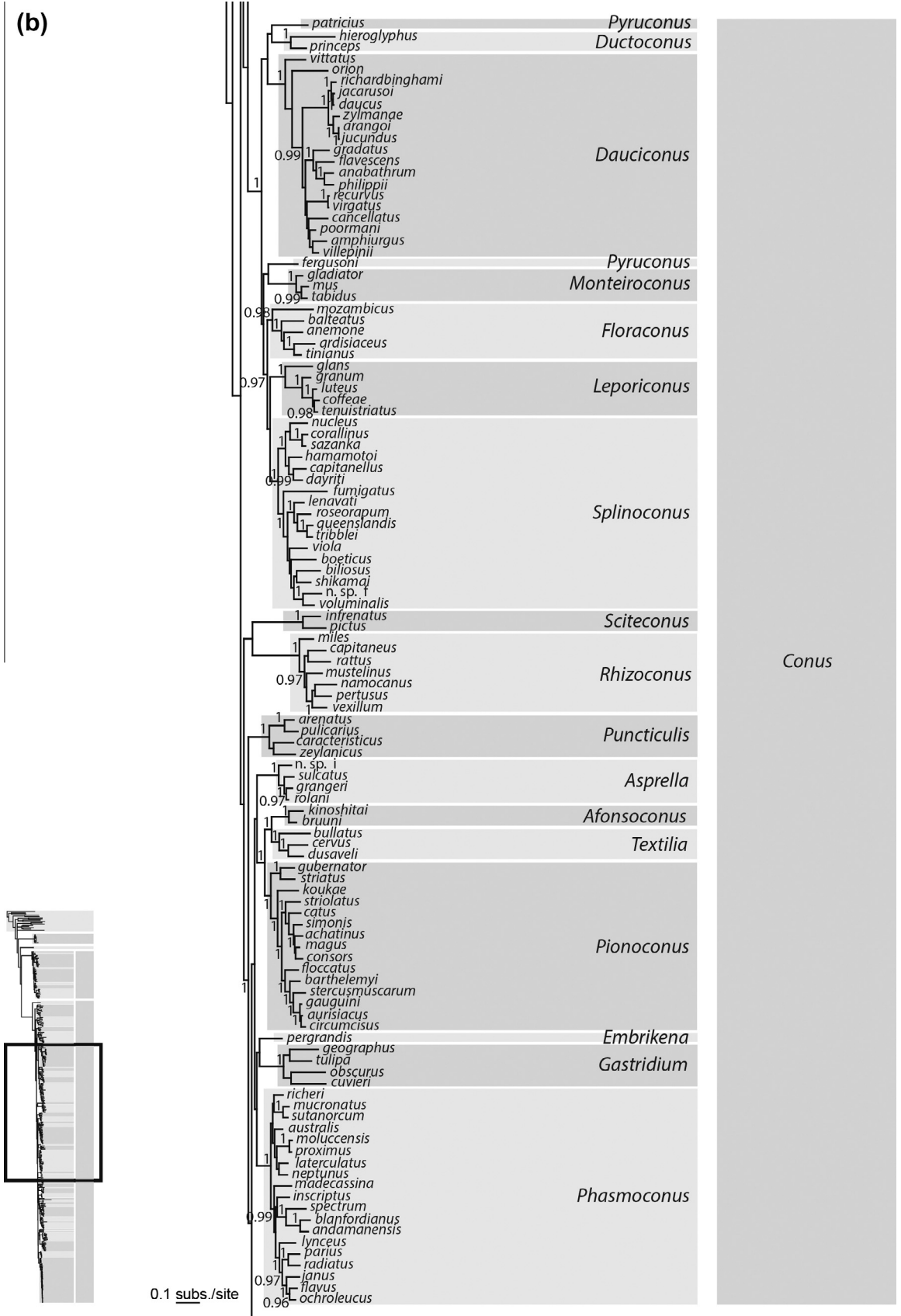


Fig. 2 (continued)

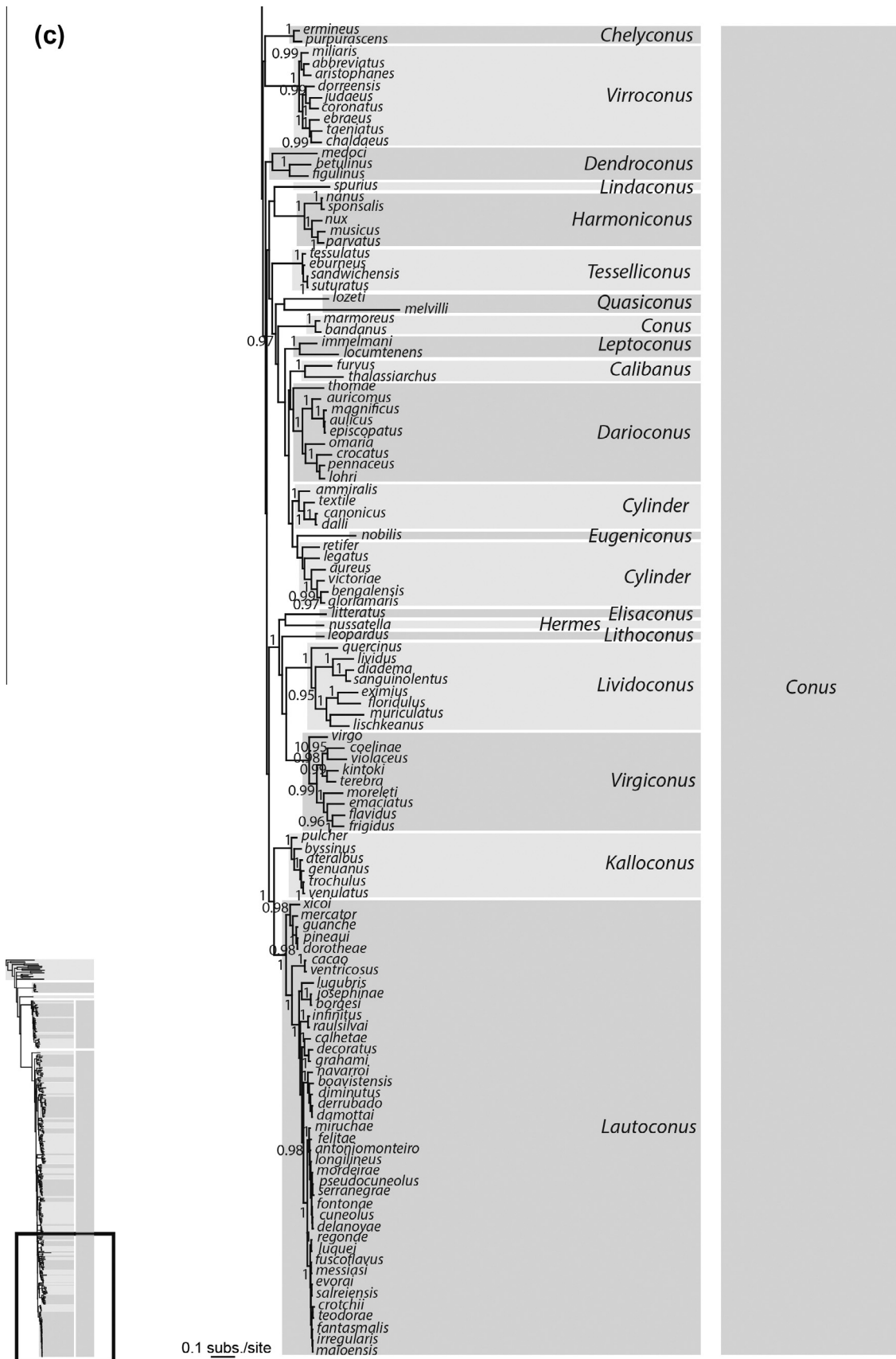


Fig. 2 (continued)

of the relationships among the subclades of the SMC and LMC were not resolved; this could be due to a lack of phylogenetic signal for the three mitochondrial genes analysed here and/or to a radiation process that led to multiple lineages originating in a short period of time. Nonetheless, some groupings can be noted, although in most cases only supported by the Bayesian analysis (Fig. 2). Within the SMC, all the species except for *C. arcuatus* and *C. mazei* clustered together (PP = 1, bootstrap = 34). *Conus distans* is the sister-species of all other members of the LMC (PP = 1; this relationship was absent in the ML analysis). Half of the members of the LMC (from *Punctuliculus* to the bottom of Fig. 2) occur within a well-supported clade (PP = 1; relationship not found with the ML analysis).

Similar to the results obtained by Puillandre et al. (2011a) with similar outgroups, monophyly of the cone snails (=Conidae sensu Bouchet et al., 2011 – see Table 1) is not supported, suggesting that more taxa, in particular within the closely related families (Borsoniidae, Clathurellidae, Conorbiidae), and additional genes, especially nuclear, with lower rates of evolution, should be analysed to fully resolve the relationships of cone snails and other Conoidea. The diversity pattern within Conidae remained unchanged from previous studies (e.g. Duda and Kohn, 2005; Tucker and Tenorio, 2009), with very disparate numbers of species between the main lineages. By far most cone snails species (~85%) are in the LMC.

4. Discussion

4.1. Species diversity and phylogenetic relationships

In most cases (213 of the 320 named species), DNA analyses were congruent with species delimitation based on shell characters. For the remaining species, DNA analyses were not found congruent with species delimitation based on morphological characters, and we examined four hypotheses that could explain this high number of discrepancies: (1) Specimens were not identified correctly. Although specimens with vouchers (or at least a picture) were examined by several experts to verify identification, a large proportion of the sequences (especially those from GenBank) lacked voucher material and could not be evaluated. (2) The sequence obtained belongs to a contaminant. Several identical sequences independently obtained by different laboratories reduce the likelihood of contamination, but checking for contamination is more difficult when only a single specimen is available for a given named species. (3) The three analysed genes all belong to the maternally transmitted mitochondrial genome, and its evolutionary history is distinct from the species tree. In particular, the non-monophyly of a given morphospecies may be linked to the fact that the analysed gene(s) have not yet coalesced (Funk and Omland, 2003). (4) Lack of morphological variability (e.g. cryptic species) or, conversely, high within species morphological variability (e.g. linked to phenotypic plasticity) resulted in incorrectly delimited species, suggesting that the taxonomy needs to be revised.

The recovery of a new clade, namely *Profundiconus*, illustrates the fact that more complete taxon sampling can provide a much better view of the evolutionary history and taxonomic diversity of groups. Although our current phylogenetic treatment more than doubles the number of species examined, our analyses included less than 50% of the recognized cone snail species; inclusion of additional species and analyses of additional gene sequence regions will be instrumental in reconstructing the history of the Conidae and may reveal additional previously unrecognized groups.

Most, if not all, previously published molecular phylogenies are congruent with the phylogenetic results presented here; this does not come as a surprise as most of the specimens and sequences analysed in these studies were combined in our dataset. However,

phylogenetic trees that were reconstructed with other gene regions (intron 9 CIS Kraus et al. (2011); and calmodulin exon + intron gene sequences, Duda and Palumbi (1999a) are also consistent with those produced here. All clades defined in these prior trees were recovered in our trees (taking into account that not all the same species were included in all studies). The inclusion of many more species compared to the previously published phylogenies, however, revealed many clades that were previously unrecognized either because members of these clades were not included in the previous analyses or because the inclusion of additional species and/or sequences improved the resolution of the tree. The phylogenetic analysis of the 320 cone snail species has been turned into a new classification for the family Conidae that now includes 4 genera and 71 subgenera (Puillandre et al., in press).

4.2. Evolution of diet

Most cone snails feed on polychaete worms, and reconstruction of the evolution of their diets supports the hypothesis that the cone snail ancestor was vermivorous (Fig. 3). The form of its radular tooth (Kohn et al., 1999) and its position in the tree (Fig. 3) also support the evolution of the unusual diet of *C. californicus*—this species is able to feed on molluscs, worms, crustaceans and fishes (Biggs et al., 2010)—from a worm-hunting ancestor. This is also likely in the few clades whose members specialize on fishes (members of *Chelyconus*, *Phasmoconus*, *Gastridium* and *Pionoconus*) and molluscs (most of the members of the subgenera *Conus*, *Leptoconus*, *Calibanus*, *Darioconus*, *Cylinder*, and *Eugeniconus*). The capacity to feed on molluscs likely appeared only once, with a probable reversion to worm-hunting behaviour in *C. nobilis* (diet predicted from radular tooth characters).

Reconstruction of the evolution of the cone snail diet shows that the capacity to prey on fishes probably appeared several times during the evolution of the group. If we rely only on the species for which piscivory has been confirmed by direct observation, and not on the species for which the diet has been inferred from the radula (marked “2” in Fig. 3), the piscivorous diet evolved only twice, in *C. ermineus* and *C. purpurascens* within *Chelyconus*, and in several species of the clade (*Asprella*, *Afonsoconus*, *Textilia*, *Pionoconus*, *Embrikena*, *Gastridium*, *Phasmoconus*), as represented by the two grey boxes in Fig. 3. However, the relationships between these two clades are not supported, and we thus cannot rule out that piscivory evolved only once. Similarly, several previous phylogenetic investigations of cone snails suggest that fish-eating arose multiple times during the evolution of this group, but many of the resultant trees from these studies lacked rigorous support to reject the hypothesis that fish-eating evolved only once (Duda et al., 2001, Figs. 1–3, 5; Kraus et al., 2011, Figs. 2 and 3; but see Duda and Palumbi, 2004).

4.3. Clade specificity of venom peptides

In this section we relate an independent dataset – the major peptide toxins expressed in the venom of each species in Conidae (see Supplementary data 7 for the GenBank accession numbers) – to the phylogeny based on standard mitochondrial marker genes shown in Fig. 2. At present, the range of species whose venom has been comprehensively analysed is far more phylogenetically restricted than the species for which the mitochondrial markers are available (as shown by the asterisks in Fig. 3); consequently, it was thus not possible to directly map the evolution of the toxins on the tree, as done with the diet and biogeography. Nevertheless, it is clear even from the more limited dataset available that the major venom peptides expressed in a given species tightly correlate with the clade to which that particular species is assigned, based on the molecular data (Fig. 2). Consequently, venom

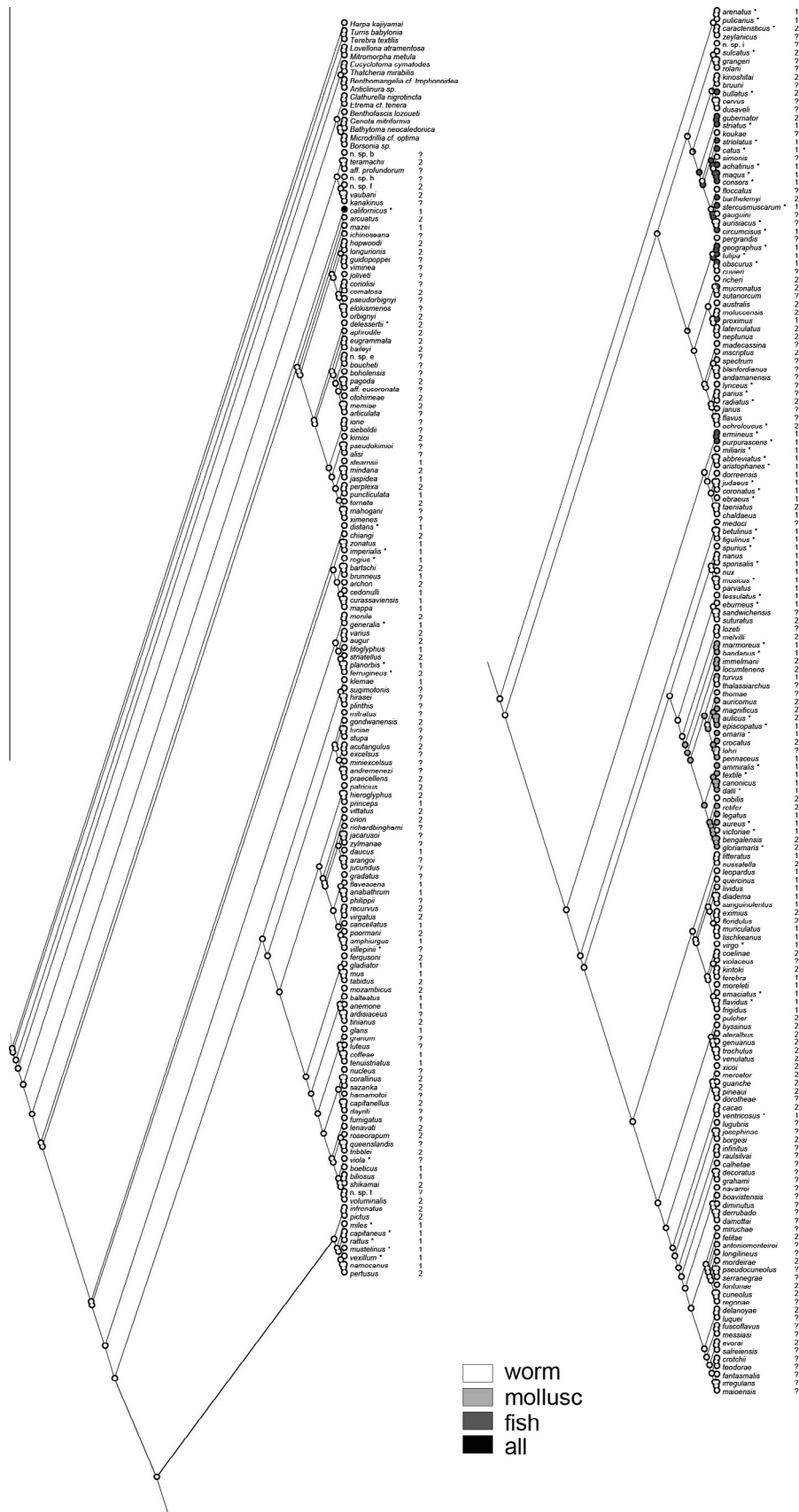


Fig. 3. Mapping of the type of prey on the Bayesian tree based on a concatenation of the COI, 16S and 12S genes for the reduced dataset of 326 specimens. *: Species for which at least one nucleotide sequence of conotoxin is registered in GenBank. (1) Species for which the diet is known from direct observations. (2) Species for which the diet has been inferred from the radula. ?: species for which the diet is unknown. When species for which the diet has been inferred from the radula are not taken into account for the ancestral state reconstruction, the clade delimited by the light grey box is inferred to include only mollusc-hunting species and the two clades delimited by the dark grey boxes are inferred to include only fish-hunting species.

peptides can be used as an independent dataset to confirm or refute the clades defined using mitochondrial genes.

We specifically tested this hypothesis with the fish-hunting clades. As discussed above, the phylogeny suggests that worm hunting was the ancestral state. One family of venom peptides that are well understood at the mechanistic level are the α -conotoxins, targeted to the nicotinic acetylcholine receptor, a molecular target that is key to prey capture. Blocking this receptor at the synapse between nerve and muscle results in the paralysis of potential prey. The major toxins in the venoms of cobra-related snake species, such as cobratoxin or α -bungarotoxin, similarly target the nicotinic acetylcholine receptor of their prey. In the shift from worm hunting to fish hunting, the α -conotoxins were clearly under selection to diverge from the ancestral worm-hunting nicotinic antagonists, and to target the very distinctive nicotinic acetylcholine receptor expressed in the skeletal muscle of vertebrates. Thus, the members of the α -conotoxin family in worm-hunting cones mostly belong to a specific toxin gene subfamily called the $\alpha 4/7$ subfamily. These have the canonical sequence CCX_4CX_7C : the peptides in the gene superfamily, as defined from the similarity in the signal sequence, have 4 cysteine residues with diverse amino acids in between them. In the typical ancestral peptide there are 4 and 7AA respectively in the two inter-cysteine intervals. [Supplementary data 7](#) shows examples of $\alpha 4/7$ subfamily peptides from two different clades of worm-hunting *Conus* snails, *Puncticulis* and *Dendroconus*; peptide sequences from two species in each clade are shown.

As shown in [Supplementary data 7](#), in one specific clade of fish-hunting cone snails (*Pionoconus*), the α -conotoxin family peptides that are highly expressed diverge systematically from the ancestral canonical sequence, and belong to a different subclass of α -conotoxins, the $\alpha 3/5$ toxin gene subfamily (canonical sequence: CCX_3CX_5C). However, in a different clade of fish-hunting cone snails (*Chelyconus*), the ancestral subfamily has also been altered, but the change is entirely different: an extra disulfide bond has been added (leading to peptides with 6 instead of 4 cysteines). Thus, all piscivorous species in *Pionoconus* express the $\alpha 3/5$ subfamily member as the major venom peptide for inhibiting the nicotinic acetylcholine receptor at the neuromuscular junction. However, in the piscivorous *Chelyconus* clade, it is the longer peptides with an extra disulfide linkage (known as αA -conotoxins) that have this physiological role. Thus, although the Bayesian analysis in [Fig. 2](#) does not statistically allow the unequivocal conclusion of independent origins of fish-hunting in the *Pionoconus* and *Chelyconus* clades, this is strongly supported by the type of venom-peptide expression data shown in [Supplementary data 7](#). The same divergence between venom peptides in *Pionoconus* and *Chelyconus* is found if the peptides targeted to voltage-gated K channels are examined.

Furthermore, the major nicotinic acetylcholine receptor antagonists in some highly specialized worm-hunting lineages, such as *Stephanoconus* (specialized to prey on amphinomid polychaetes), also diverge systematically from the canonical $\alpha 4/7$ subfamily, to peptides in the $\alpha 4/3$ subfamily (CCX_4CX_3C). In this case, the most highly expressed nicotinic antagonist targets a different nicotinic receptor subtype, presumably similar to the isoform expressed at the neuromuscular synapse of the amphinomid prey of species in the *Stephanoconus* clade.

4.4. Biogeography

Mapping geographic distributions of species onto the reconstructed phylogeny requires more transition events than the evolution of the diet ([Fig. 4](#)). Based on the tree, most species occur in the Indo-Pacific (IP), which may be the ancestral source of the Conidae (frequency of occurrence of Indo-Pacific region at the node 1 – [Fig. 4](#): 90.5%) and of *Conus* (node 2: 99.2%). However, the fossil

record supports the view that the center of diversity of Conidae in the Eocene was the former Tethys region ([Kohn, 1985](#)), also the region of its oldest known fossils ([Kohn, 1990](#)). In total, 22 events of dispersals and 27 events of vicariance are inferred. Several of these events are relatively recent and involve species from the IP and EP, e.g., the clades containing the EP species *C. nux*, *C. dalli* and *C. diadema*, that suggest recent migration events across the East Pacific Barrier to establish these species in the EP. Several other clades included sets of species from both the EP and WA, e.g., the clade containing the piscivores *C. purpurascens* and *C. ermineus*, suggesting recent allopatric speciation events linked to vicariance of lineages associated with the emergence of Isthmus of Panama. In addition, in one case it is possible to reconstruct a scenario of consecutive speciation (and possible dispersion and/or vicariance) events to explain the origins of current IP, EP, WA and EA distributions of members of a clade: a first dispersion or vicariance event between the IP and EP led to the origin of *C. fergusonii* and *C. gladiator* in the EP, followed by another dispersion or vicariance event that gave rise to *C. mus* in the WA (possibly associated with the emergence of the Isthmus of Panama), which was then followed by separation of lineages in (or a migration event between) the WA and EA and ultimate origin of *C. tabidus* in the EA. *Conus tabidus* is the only EA cone snail species on the tree that is restricted to the EA and does not occur in a clade with other EA species.

Overall, the number of suspected migration and vicariance events is low relative to the number of species included in the analysis. Indeed, few cone snail species occur in more than one of the main marine biogeographic provinces (e.g., *C. ermineus* occurs in the WA and EA and as stated above *C. chaldaeus*, *C. ebraeus* and *C. tessulatus* occur in both the IP and EP). The low levels of connectivity between these provinces is probably linked to large-scale historical-geological events, such as the existence of the East Pacific Barrier between the islands of the central Pacific and the offshore islands and coast of the Americas and the Mid-Atlantic Barrier that separates the Atlantic Ocean into western and eastern regions ([Duda and Kohn, 2005](#)) as well as physiological barriers that prevent migration through cold water barriers at higher latitudes.

The only previous analysis of the biogeographic history of cone snails ([Duda and Kohn, 2005](#)) inferred that the group contains two main groups, the SMC and LMC, that were largely restricted to the EP + WA and IP respectively and that this geographic separation likely promoted the divergence of the lineages that gave rise to these clades. That study was able to include only nine SMC species, and with increased taxonomic coverage, this pattern is no longer apparent. Most (70%) SMC species occur in the IP, while the others are evenly distributed in the EP and WA ([Fig. 4](#)). The IP SMC members are deep-water species, while most of the EP and WA members are not. Thus, bathymetric isolation, and not isolation in separate biogeographic provinces as inferred by [Duda and Kohn \(2005\)](#), may account for the separation of the SMC and LMC.

4.5. Speciation patterns in cone snails

Allopatric patterns, either linked to a speciation event or to within-species differentiation that has not led to speciation, occur throughout Conidae (e.g. [Duda and Lee, 2009a](#); [Duda and Rolán, 2005](#); [Puillandre et al., 2011b](#)). The likely propensity of such populations to evolve different venoms ([Duda and Lee, 2009b](#); [Duda et al., 2009](#)) that may be linked to prey shifts, make cone snails a promising model to also explore the effects of non-geographic factors on the diversification of the group. Prey shifts after speciation could induce strong positive selection on venom properties and the evolution of new toxins more adapted to new prey ([Duda et al., 2008](#)), in agreement with the hypothesis proposed for snakes ([Barlow et al., 2009](#); [Kordis and Gubensek, 2000](#); [Lynch, 2007](#)) and scorpions ([Kozminsky-Atias et al., 2008](#)). [Duda and Lee](#)

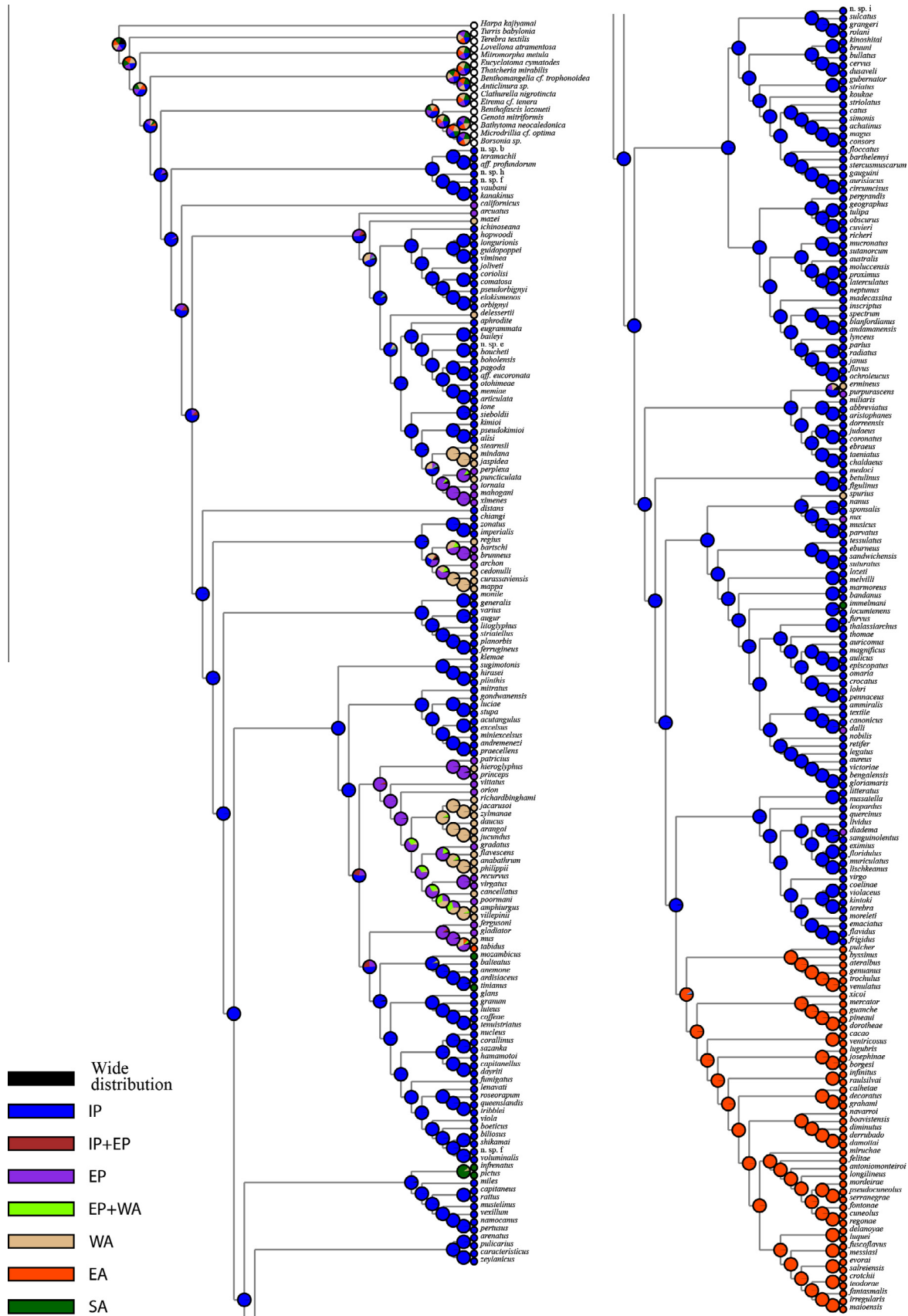


Fig. 4. Mapping of the geographic distribution (EA = East Atlantic; EP = East Pacific; IP = Indo-Pacific; SA = South Africa; WA = West Atlantic) on the Bayesian tree based on a concatenation of the COI, 16S and 12S genes for the reduced dataset of 326 specimens.

(2009b) also proposed that ecological release, occurring when an isolated population is under relaxed selective pressure (e.g. from a predator–prey arms race), may lead to the appearance of new toxins, even without prey shift, in *C. miliaris*. However, the available data on conotoxins remain too scarce (species with asterisks in Fig. 3) to reconstruct the evolution of the conotoxins from the phylogenetic tree presented here and to eventually identify shifts in venom composition between closely related species that could be linked to prey shift or ecological release (but see Section 3.4). Only 71 species of cone snails are represented by at least one nucleotide sequence of conotoxin in GenBank (Puillandre et al., 2012a), and for most of them the conotoxin sampling is not saturated, as revealed by recent next-gen sequencing (Terrat et al., 2011; Violette et al., 2012), precluding a robust comparison of venom composition at a large-scale.

Because our analysis revealed only a few diet shifts, one could argue that this could explain only few speciation events in cone snails. However, we limited prey categories to only the three major types (molluscs, worms and fishes), and important shifts likely occur at finer taxonomic levels of prey. Actually, closely related sympatric *Conus* species of cone snails typically exhibit different feeding specializations, as shown before (e.g. (Kohn and Nybakken, 1975; Kohn, 2001, 1959), and additional comparative analyses may provide stronger evidence linking prey shift to speciation events in some cases.

4.6. Conclusion

Molecular phylogenetic analysis has confirmed that cone snails constitute a largely heterogeneous group in spite of overall morphological homogeneity that justified their inclusion in a single genus until recently. Speciation in cone snails results from different evolutionary processes, since several models of speciation, either linked to geography or ecology, may apply to the group. This propensity to speciate following several evolutionary processes is likely one of the key factors to explain why cone snails are one of the most diverse groups of marine invertebrates. We also argue that the pharmacological diversity of the peptides found in the venom gland of the cone snails have been underestimated, since most of the studies of the last three decades focused on species that belong to only a few lineages (Puillandre et al., 2012a), and several lineages remain largely understudied (or even not studied at all – e.g. *Profundiconus*). The newly defined, highly divergent lineages of cone snails may represent novel biological strategies not found in the limited set of cone snail lineages analysed so far. One indication of this is the high diversity of conotoxins found in *C. californicus* (only half of the subfamilies found in *C. californicus* are also found in *Conus* species – Biggs et al., 2010), this would imply that conotoxin study is only in its infancy, suggesting a promising future for the discovery of new conotoxins and new therapeutic applications.

Acknowledgments

The PANGLAO 2004 Marine Biodiversity Project was funded by the Total Foundation and the French Ministry of Foreign Affairs; The PANGLAO 2005 cruise on board M/V DA-BFAR associated the USC, MNHN (co-PI Philippe Bouchet) and the Philippines Bureau of Fisheries and Aquatic Research (BFAR; co-PI Ludivina Labe); the MNHN-IRD-PNI Santo 2006 expedition was made possible by grants, among others, from the Total Foundation and the Stavros Niarchos Foundation; the AURORA 2007 cruise was made possible through a grant from the Lounsbery Foundation; The Miriky and Atimo Vatae expeditions were funded by the Total Foundation, Prince Albert II of Monaco Foundation, and Stavros Niarchos Foundation, and conducted by MNHN and Pro-Natura International

(PNI) as part of their “Our Planet Reviewed” programme; the Coral Sea and Solomon Islands cruises took place on board R/V Alis deployed from Nouméa by the Institut de Recherche pour le Développement (IRD), and Bertrand Richer de Forges and Sarah Samadi were cruise leaders for the Solomons, Coral Sea and Vanuatu expeditions. U.S. National Science Foundation Grant 0316338 supported the contributions of AJK, TFD, and CPM. Ellen Strong, Marie-Catherine Boisselier and Sarah Samadi are thanked for their role in molecular sampling during these expeditions. This work was supported by the Service de Systématique Moléculaire (UMS 2700 CNRS-MNHN), the network “Bibliothèque du Vivant” funded by the CNRS, the Muséum National d’Histoire Naturelle, the INRA and the CEA (Centre National de Séquençage) and the NIH program project grant (GM48677), as well as partial support from the ICBG grant (1U01TW008163) from Fogarty (NIH). The phylogenetic analyses were performed on the MNHN cluster (UMS 2700 CNRS-MNHN). This work was partly supported by the project CONOTAX, funded by the French “Agence Nationale de la Recherche” (grant number ANR-13-JSV7-0013-01). The authors also thank Barbara Buge, Virginie Héros, and Julien Brisset for curation of the voucher specimens in the MNHN and Eric Monnier, Loïc Limpalaër and Manuel Tenorio who helped in identifying the specimens.

Appendix A. Supplementary material

Supplementary data associated with this article can be found, in the online version, at <http://dx.doi.org/10.1016/j.ympcv.2014.05.023>.

References

- Austerlitz, F., David, O., Schaeffer, B., Bleakley, K., Olteanu, M., Leblois, R., Veuille, M., Laredo, C., 2009. DNA barcode analysis: a comparison of phylogenetic and statistical classification methods. *BMC Bioinformatics* 10, S10.
- Bandopadhyay, P.K., Stevenson, B.J., Ownby, J.-P., Cady, M.T., Watkins, M., Olivera, B.M., 2008. The mitochondrial genome of *Conus textile*, *coxI-coxII* intergenic sequences and conoidean evolution. *Mol. Phylogenet. Evol.* 46, 215–223.
- Barlow, A., Pook, C.E., Harrison, R.A., Wüster, W., 2009. Coevolution of diet and prey-specific venom activity supports the role of selection in snake venom evolution. *Proc. R. Soc. B Biol. Sci.* 276, 2443–2449.
- Biass, D., Dutertre, S., Gerbault, A., Menou, J.-L., Offord, R., Favreau, P., Stöcklin, R., 2009. Comparative proteomic study of the venom of the piscivorous cone snail *Conus consors*. *J. Proteomics* 72, 210–218.
- Biggs, J.S., Watkins, M., Puillandre, N., Ownby, J.P., Lopez-Vera, E., Christensen, S., Moreno, K.J., Bernaldez, J., Licea-Navarro, A., Showers Corneli, P., Olivera, B.M., 2010. Evolution of *Conus* peptide toxins: analysis of *Conus californicus* Reeve, 1844. *Mol. Phylogenet. Evol.* 56, 1–12.
- Bouchet, P., Rocroi, J.-P., 2005. Classification and nomenclator of Gastropod families. *Malacologia* 47, 1–397.
- Bouchet, P., Kantor, Y., Sysoev, A., Puillandre, N., 2011. A new operational classification of the Conoidea (Gastropoda). *J. Molluscan Stud.* 77, 273–308.
- Cunha, R.L., Castilho, R., Ruber, L., Zardoya, R., 2005. Patterns of cladogenesis in the venomous marine gastropod genus *Conus* from the Cape Verde Islands. *Syst. Biol.* 54, 634–650.
- Cunha, R.L., Tenorio, M.J., Afonso, C., Castilho, R., Zardoya, R., 2008. Replaying the tape: recurring biogeographical patterns in Cape Verde *Conus* after 12 million years. *Mol. Ecol.* 17, 885–901.
- Duda, T.F.J., Kohn, A.J., 2005. Species-level phylogeography and evolutionary history of the hyperdiverse marine gastropod genus *Conus*. *Mol. Phylogenet. Evol.* 34, 257–272.
- Duda, T.F.J., Lee, T., 2009a. Isolation and population divergence of a widespread Indo-West Pacific marine gastropod at Easter Island. *Mar. Biol.* 156, 1193–1202.
- Duda, T.F.J., Lee, T., 2009b. Ecological release and venom evolution of a predatory marine Snail at Easter Island. *PLoS ONE* 4, e5558.
- Duda, T.F.J., Lessios, H.A., 2009. Connectivity of populations within and between major biogeographic regions of the tropical Pacific in *Conus ebraeus*, a widespread marine gastropod. *Coral Reefs* 28, 651–656.
- Duda, T.F.J., Palumbi, S.R., 1999a. Developmental shifts and species selection in gastropods. *Proc. Natl. Acad. Sci.* 96, 10272–10277.
- Duda, T.F.J., Palumbi, S.R., 1999b. Molecular genetics of ecological diversification: duplication and rapid evolution of toxin genes of the venomous gastropod *Conus*. *Proc. Natl. Acad. Sci.* 96, 6820–6823.
- Duda, T.F.J., Palumbi, S.R., 2004. Gene expression and feeding ecology: evolution of piscivory in the venomous gastropod genus *Conus*. *Proc. R. Soc. B* 271, 1165–1174.
- Duda, T.F.J., Rolán, E., 2005. Explosive radiation of Cape Verde *Conus*, a marine species flock. *Mol. Ecol.* 14, 267–272.

- 845 Duda, T.F.J., Kohn, A.J., Palumbi, S.R., 2001. Origins of diverse feeding ecologies
846 within *Conus*, a genus of venomous marine gastropods. *Biol. J. Linn. Soc.* 73,
847 391–409.
- 848 Duda, T.F.J., Bolin, M.B., Meyer, C., Kohn, A.J., 2008. Hidden diversity in a
849 hyperdiverse gastropod genus: discovery of previously unidentified members
850 of a *Conus* species complex. *Mol. Phylogenet. Evol.* 49, 867–876.
- 851 Duda, T.F.J., Kohn, A.J., Matheny, A.M., 2009. Cryptic species differentiated in *Conus*
852 *ebraeus*, a widespread tropical marine gastropod. *Biol. Bull.* 217, 292–305.
- 853 Edgar, R.C., 2004. MUSCLE: multiple sequence alignment with high accuracy and
854 high throughput. *Nucleic Acids Res.* 32, 1792–1797.
- 855 Espino, S.L., Kohn, A.J., Villanueva, J.A., Heralde, F.M., Showers Corneli, P.,
856 Concepcion, G.P., Olivera, B.M., Santos, A.D., 2008. Feeding behavior,
857 phylogeny, and toxinology of *Conus furvus* Reeve, 1843 (Gastropoda:
858 Neogastropoda: Conidae). *Nautilus* 122, 143–150.
- 859 Espiritu, D.J.D., Watkins, M., Dia-Monje, V., Cartier, G.E., Cruz, L.E., Olivera, B.M.,
860 2001. Venomous cone snails: molecular phylogeny and the generation of toxin
861 diversity. *Toxicon* 39, 1899–1916.
- 862 Folmer, O., Black, M., Hoeh, W., Lutz, R., Vrijenhoek, R., 1994. DNA primers for
863 amplification of mitochondrial cytochrome c oxidase subunit I from diverse
864 metazoan invertebrates. *Mol. Mar. Biol. Biotechnol.* 3, 294–299.
- 865 Funk, D.J., Omland, K.E., 2003. Species-level paraphyly and polyphyly: frequency,
866 causes, and consequences, with insights from animal mitochondrial DNA. *Annu.*
867 *Rev. Ecol. Evol. Syst.* 34, 397–423.
- 868 Huelsenbeck, J.P., Ronquist, F., Hall, B., 2001. MrBayes: Bayesian inference of
869 phylogeny. *Bioinformatics* 17, 754–755.
- 870 Kaufenstein, S., Huys, I., Kuch, U., Melaun, C., Tytgat, J., Mebs, D., 2004. Novel
871 conopeptides of the I-superfamily occur in several clades of cone snails. *Toxicon*
872 44, 539–548.
- 873 Kaufenstein, S., Porth, C., Kendel, Y., Wunder, C., Nicke, A., Kordis, D., Favreau, P.,
874 Koua, D., Stöcklin, R., Mebs, D., 2011. Venomic study on cone snails (*Conus* spp.)
875 from South Africa. *Toxicon* 57, 28–34.
- 876 Keane, T.M., Creevey, C.J., Pentony, M.M., Naughton, T.J., McInerney, J.O., 2006.
877 Assessment of methods for amino acid matrix selection and their use on
878 empirical data shows that ad hoc assumptions for choice of matrix are not
879 justified. *BMC Evol. Biol.* 6, 1–17.
- 880 Kohn, A.J., 1959. The ecology of *Conus* in Hawaii. *Ecol. Monogr.* 29, 47–90.
- 881 Kohn, A.J., 1968. Type specimens and identity of the described species of *Conus*. 4.
882 The species described by Hwass, Bruguière and Olivi in 1792. *J. Linn. Soc. Lond.*
883 *Zool.* 47, 431–503.
- 884 Kohn, A.J., 1985. Evolutionary ecology of *Conus* on Indo-Pacific coral reefs. Fifth
885 International Coral Reef Congress, 139–144.
- 886 Kohn, A.J., 1990. Tempo and mode of evolution in Conidae. *Malacologia* 32, 55–67.
- 887 Kohn, A.J., 2001. Maximal species richness in *Conus*: diversity, diet and habitat on
888 reefs of northeast Papua New Guinea. *Coral Reefs* 20, 25–38.
- 889 Kohn, A.J., 2012. Egg size, life history, and tropical marine gastropod biogeography.
890 *Am. Malacol. Bull.* 30, 163–174.
- 891 Kohn, A.J., Nybakken, J.W., 1975. Ecology of *Conus* on eastern Indian Ocean fringing
892 reefs: Diversity of species and resource utilization. *Mar. Biol.* 29, 211–234.
- 893 Kohn, A.J., Nishi, M., Pernet, B., 1999. Snail spears and scimitars: a character analysis
894 of *Conus* radular teeth. *J. Molluscan Stud.* 65, 461–481.
- 895 Kordis, D., Gubensek, F., 2000. Adaptive evolution of animal toxin multigene
896 families. *Gene* 261, 43–52.
- 897 Kozminsky-Atias, A., Bar-Shalom, A., Mishmar, D., Zilberberg, N., 2008. Assembling
898 an arsenal, the scorpion way. *BMC Evol. Biol.* 8, 333.
- 899 Kraus, N.J., Showers Corneli, P., Watkins, M., Bandyopadhyay, P.K., Seger, J., Olivera,
900 B.M., 2011. Against expectation: a short sequence with high signal elucidates
901 cone snail phylogeny. *Mol. Phylogenet. Evol.* 58, 383–389.
- 902 Kraus, N.J., Watkins, M., Bandyopadhyay, P.K., Seger, J., Olivera, B.M., Showers
903 Corneli, P., 2012. A very short, functionally constrained sequence diagnoses
904 cone snails in several Conasprella clades. *Mol. Phylogenet. Evol.* 65, 335–338.
- 905 Lluisma, A.O., Milash, B.A., Moore, B., Olivera, B.M., Bandyopadhyay, P.K., 2012.
906 Novel venom peptides from the cone snail *Conus pulicarius* discovered through
907 next-generation sequencing of its venom duct transcriptome. *Mar. Genomics* 5,
908 43–51.
- 909 Lynch, V.J., 2007. Inventing an arsenal: adaptive evolution and neofunctionalization
910 of snake venom phospholipase A2 genes. *BMC Evol. Biol.* 7, 2.
- 911 Maddison, W.P., Maddison, D., 2009. Mesquite: a modular system for evolutionary
912 analysis Version 2.01. <<http://mesquiteproject.org>>.
- Monje, V.D., Ward, R., Olivera, B.M., Cruz, L.J., 1999. 16 S mitochondrial ribosomal
RNA gene sequences: a comparison of seven *Conus* species. *Philipp. J. Sci.* 128,
225–237.
- Nam, H.H., Corneli, P.S., Watkins, M., Olivera, B., Bandyopadhyay, P., 2009. Multiple
genes elucidate the evolution of venomous snail-hunting *Conus* species. *Mol.*
Phylogenet. Evol. 53, 645–652.
- Olivera, B.M., 2006. *Conus* peptides: biodiversity-based discovery and exogenomics.
J. Biol. Chem. 281, 31173–31177.
- Palumbi, S., 1996. *Nucleic Acids II: the polymerase chain reaction*. In: Hillis, D.,
Moritz, C., Mable, B.K. (Eds.), *Molecular Systematics*. Sinauer Associates,
Sunderland (MA), pp. 205–247.
- Pereira, C.M., Rosado, J., Seabra, S.G., Pina-Martins, F., Paulo, O.S., Fonseca, P.J., 2010.
Conus pennaceus: a phylogenetic analysis of the Mozambican molluscan
complex. *Afr. J. Mar. Sci.* 32, 591–599.
- Puillandre, N., Samadi, S., Boisselier, M.C., Sysoev, A.V., Kantor, Y.I., Cruaud, C.,
Couloux, A., Bouchet, P., 2008. Starting to unravel the toxoglossan knot:
molecular phylogeny of the “turrids” (Neogastropoda: Conoidea). *Mol.*
Phylogenet. Evol. 47, 1122–1134.
- Puillandre, N., Strong, E., Bouchet, P., Boisselier, M.C., Couloux, A., Samadi, S., 2009.
Identifying gastropod spawn from DNA barcodes: possible but not yet
practicable. *Mol. Ecol. Resour.* 9, 1311–1321.
- Puillandre, N., Meyer, C.P., Bouchet, P., Olivera, B.M., 2010. Evolution of *Conus* peptide genes:
duplication and positive selection in the A-superfamily. *J. Mol. Evol.* 70, 190–
202.
- Puillandre, N., Kantor, Y., Sysoev, A., Couloux, A., Meyer, C., Rawlings, T., Todd, J.A.,
Bouchet, P., 2011a. The dragon tamed? A molecular phylogeny of the Conoidea
(Mollusca, Gastropoda). *J. Molluscan Stud.* 77, 259–272.
- Puillandre, N., Meyer, C.P., Bouchet, P., Olivera, B.M., 2011b. Genetic divergence and
geographical variation in the deep-water *Conus orbigny* complex (Mollusca:
Conoidea). *Zool. Scr.* 40, 350–363.
- Puillandre, N., Koua, D., Favreau, P., Olivera, B.M., Stöcklin, R., 2012a. Molecular
phylogeny, classification and evolution of conopeptides. *J. Mol. Evol.* 74, 297–
309.
- Puillandre, N., Lambert, A., Brouillet, S., Achaz, G., 2012b. ABGD, automatic barcode
gap discovery for primary species delimitation. *Mol. Ecol.* 21, 1864–1877.
- Puillandre, N., Duda, Jr., T.F., Meyer, C.P., Olivera, B.M., Bouchet, P., in press. One,
four or 100 genera? A new classification of the cone snails. *J. Molluscan Stud.* **Q4**
Rambaut, A., Drummond, A.J., 2007. Tracer v1.4. <<http://beast.bio.ed.ac.uk/Tracer>>.
Simon, C., Franke, A., Martin, A., 1991. The polymerase chain reaction: DNA
extraction and amplification. In: Hewitt, G.M., Johnson, A.W.B., Young, J.P.W.
(Eds.), *Molecular Techniques in Taxonomy*. Springer-Verlag, New York, pp. 329–
355.
- Stamatakis, A., 2006. RAxML-VI-HPC: maximum likelihood-based phylogenetic
analyses with thousands of taxa and mixed models. *Bioinformatics* 22, 2688–
2690.
- Stanley, S.M., 1979. Macroevolution: pattern and process. Freeman, San Francisco.
- Stanley, S.M., 2008. Predation defeats competition on the seafloor. *Paleobiology* 34,
1–21.
- Tamura, K., Dudley, J., Nei, M., Kumar, S., 2007. MEGA4: molecular evolutionary
genetics analysis (MEGA) software version 4.0. *Mol. Biol. Evol.* 24, 1596–1599.
- Taylor, J.D., Kantor, Y.I., Sysoev, A.V., 1993. Foregut anatomy, feedings mechanisms
and classification of the Conoidea (=Toxoglossa) (Gastropoda). *Bull. Nat. Hist.*
Mus. Lond. Zool. 59, 125–170.
- Terrat, Y., Biass, D., Dutertre, S., Favreau, P., Remm, M., Stöcklin, R., Piquemal, D.,
Ducancel, F., 2011. High-resolution picture of a venom gland transcriptome:
case study with the marine snail *Conus consors*. *Toxicon* 59, 34–46.
- Tucker, J.K., Tenorio, M.J., 2009. Systematic classification of Recent and fossil
conoidean gastropods. *Conchbooks*, Hackenheim, Germany.
- Violette, A., Leonardi, A., Piquemal, D., Terrat, Y., Biass, D., Dutertre, S., Noguier, F.,
Ducancel, F., Stöcklin, R., Križaj, I., Favreau, P., 2012. Recruitment of glycosyl
hydrolase proteins in a cone snail venomous arsenal: further insights into
biomolecular features of *Conus* venoms. *Mar. Drugs* 10, 258–280.
- Williams, S.T., Duda, T.F.J., 2008. Did tectonic activity stimulate oligo-miocene
speciation in the indo-west Pacific? *Evolution* 62, 1618–1634.
- Yu, Y., Harris, A.J., He, X.J., 2010. S-DIVA (statistical dispersal-variance analysis): a
tool for inferring biogeographic histories. *Mol. Phylogenet. Evol.* 56, 848–850.
- Yu, Y., Harris, A.J., He, X.J., 2013. RASP (Reconstruct Ancestral State in Phylogenies)
2.1 beta.