

The Smithsonian Institution Libraries in 1998

Fiscal Year October 1, 1997-September 30, 1998

THE COLLECTIONS

IN FISCAL YEAR 1998

- 7,409 acquisition purchase orders prepared
- 18,847 titles cataloged
- 171 E(electronic) journals and 30 other electronic titles cataloged
- 12,205 volumes labeled, bound, and boxed
- 1,479 inventory records created for uncataloged Special Collections materials
- 466 volumes treated in the Book Conservation Laboratory
- 208 brittle books microfilmed
- 13,644 journal issues checked in

IN THE COLLECTIONS

- 1,215,848 volumes
- 6,126 current serial/journal subscriptions
- 184,515 microform units
- 2,102 manuscript units (groups)

ACQUISITIONS

- 46% of the books added to SIL collections were acquired as gifts or from exchange partners

The Libraries offered 177 full-text journals online this year to library users on the Smithsonian staff. Published by Academic Press, these journals cover the fields of science, technology, and medicine

With a \$10,000 grant from the Latino Initiatives Fund, the Libraries purchased a number of printed materials in the field of Latino Studies

GIFT AND EXCHANGE PROGRAM

- 4,651 Exchange partners
- 5,455 books received as gifts were added to the collection
- 3,142 journal titles received on exchange



"The Queen Pine" by Richard Ligon, *A True & Exact History of the Island of Barbados* (1673), purchased with gift and endowment funds

IN 1998...

The Collections	1
Services to Our Users	2
New Enterprises	3
How We Make It Happen	4
Education and Service	5
Exhibitions and Publications	6
Supporting The Libraries' Efforts	7-8



Smithsonian Institution Libraries

SERVICES TO OUR USERS

USER BENEFITS

- > 50,010 reference questions were answered by branch library staff
- > 51,014 items were charged out to users
- > 260,361 circulation transactions handled by staff
- > 129,455 items were browsed by users on site
- > Interlibrary loan services to Libraries' users were improved with the establishment of the Ariel Internet service which facilitated delivery of 468 articles borrowed from other institutions

AFRICAN ART INDEXING PROJECT

By the end of FY 1998, 18,869 records had been entered into the African Art Index, with 6,911 added during the fiscal year. These records, compiled by Janet L. Stanley from published literature about African art (pamphlets, journal articles, chapters in books, conference proceedings) are available in the SIL catalog on SIRIS (www.siris.si.edu) and in OCLC, the international bibliographic database. A keyword search of AFAINDEX? will retrieve a complete sub-set of the African Art Index records. The project is supported by a grant from The Getty Grant Program.

RENOVATIONS & NEW SPACES

- > The number of branch libraries expanded to 19 as planning continued for the FY 1999 opening of the National Museum of the American Indian Branch in Suitland, Maryland, and the FY 2000 opening of the Natural History Rare Book Library in the Natural History Building
- > Anthropology Branch and Birds Library relocated and continued operations with reduced collections during building renovations
- > Central Reference and Loan Services closed for building renovations. Relocated staff continued to provide reference and Interlibrary loan services
- > Preservation Services Department made room to accommodate a digital imaging laboratory scheduled to open in FY 1999

"And the staff coped magnificently with disruptions, displacements, noise, debris, sudden returns of large office collections, fumes, leaks, sprinklers going off, cold air, moves and closing of branches."

Nancy E. Gwinn, SIL Director

INTERLIBRARY LOANS OF SIL ITEMS

4,312 books and articles from SIL collections were loaned to other institutions in 1998

More than 400 items were loaned to

- > National Agriculture Library

100-230 items were loaned to

- > World Wildlife Fund Library
- > U.S. Environmental Protection Agency
- > National Institute of Standards and Technology
- > University of Delaware
- > University of Georgia

50-100 items were loaned to

- > State University of New York Albany
- > University of Maryland College Park
- > National Geographic Society Library
- > Johns Hopkins University
- > Louisiana State University
- > Georgetown University
- > University of Puerto Rico
- > Texas A&M University
- > George Washington University

ENDOWMENT SUPPORT

The Wineland Research Library Endowment was established to provide support for activities and research relating to Native American and exploration literature in conjunction with the purchase of the Charlotte and Lloyd Wineland Collection of Native American and Western Exploration Literature.



"Herd of Bison and Elk" (Tab. 47), Prince Maximilian Wied, *Reise in das Innere Nord-America in den Jahren 1832 bis 1834*. Atlas 1839-41, from the Wineland Collection

RIPLEY LIBRARY ENDOWMENT

The S. Dillon Ripley Library Endowment, established in 1983 on the occasion of Secretary emeritus Ripley's 80th birthday, has enabled the Libraries to acquire 444 books in the past five years to enrich the non-rare collections, many specifically requested by Smithsonian curators and scholars to support ongoing and new research projects. In 1998, 94 works were purchased for 16 branches.

NEW ENTERPRISES

SIL HOME PAGE <WWW.SIL.SI.EDU>

- > 756 was the average daily number of visits to the SIL web site
- > By September, the average daily number of "hits" on SIL's Home Page reached 9,001
- > Nearly 4% of online visitors came from outside the U.S., from Singapore and South Africa to Brazil and Sweden
- > June 18, 1998, was the busiest day of the year
- > The Internet Reference Tools section was the most popular portion of the SIL web site

The Home Page was re-designed in September, introducing a new subject guide to the Internet that organizes web sites by subject disciplines investigated by Smithsonian staff. The new design features images from the collections.

GRANTS

The Atherton Seidell Endowment Fund awarded the Libraries \$47,690 to initiate a project to digitize rare literature in the Natural History collections. A digital imaging production unit headed by Susan Blaine, head of the Libraries' Preservation Services Department is being set up at the Libraries' facility on North Capitol Street.

The Libraries established a Natural History Rare Books Advisory Committee to make recommendations about which books will be digitized. The goal is to bring research treasures from the collection to an international audience on the World Wide Web.

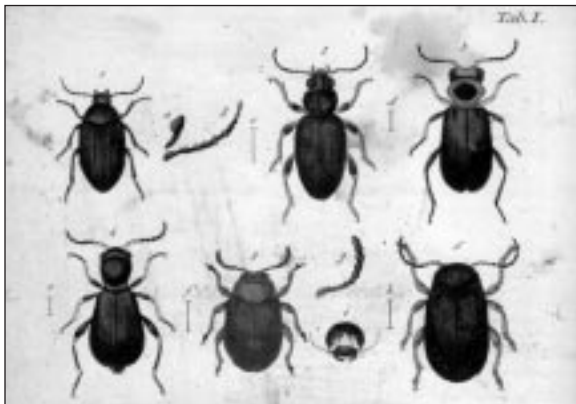
The Smithsonian Women's Committee funded a project to preserve a collection of nineteenth-century books in the Horticulture Branch. The Libraries' will use the award of \$3,780 to clean and purchase protective enclosures for over 500 books.



James Smithson (1765-1829)

PUBLISHING FOR THE WORLD-WIDE AUDIENCE ON THE INTERNET

The Libraries' online exhibition, *From Smithsonian to Smithsonian: The Birth of an Institution*, was launched in April with an attached set of Lesson Plans created by the Smithsonian Office of Education for high school students relating to themes of history and government. Notices about the educational online exhibition and the history class curriculum materials were mailed out to 5,000 history teachers in schools which have Internet access. The schools, reaching into all 50 states, included middle, junior high and high schools, public and private schools, and schools in urban and rural settings and with large and small student populations. The notices and the mailing were supported by a grant from the Smithsonian Office of Education.



The Libraries published on its Home Page (www.sil.si.edu) a digital edition of Jakob Sturm's *Verzeichniss meiner Insecten-Sammlung* (1796) with an introduction by Leslie Overstreet, Curator of Natural History Rare Books, and an appendix with an alphabetical index to the species described in the text and illustrated in the plates.

HOW WE MAKE IT HAPPEN

THE PEOPLE

The Libraries had 112 members on its staff in FY 1998 (nine joined the staff this year) and two student workers.

VOLUNTEERS

Donate their time and skills in 12 of the branch libraries and in several offices, from Acquisitions Services to Information Systems. This year > 8,942 hours were contributed by 57 volunteers.

From that total,

- > 2,465 hours from 14 volunteers in the National Museum of African Art Branch
- > 1,019 hours from volunteers at the National Air and Space Museum Branch
- > 1,207 hours from 10 volunteers at the Book Conservation Laboratory, Preservation Services Department

We thank them, one and all, for helping the Libraries bring better service and fulfill its mission.

ALTERNATE WORK SCHEDULES

In January the Libraries implementated an alternate work schedule policy, allowing most Libraries' staff to develop schedules flexible enough to respond to ongoing educational and family needs and other commitments. The plan was the result of hard work on the part of an interdivisional task group, which took into account the varieties of schedules, types of positions, and workloads across the Libraries.

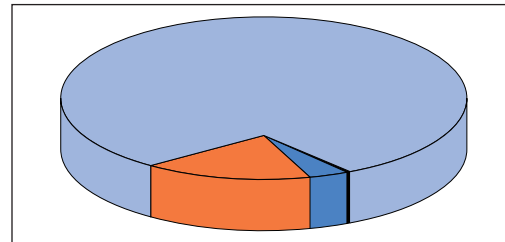


"Just in Time" training, Ned Kraft, above, and Janice Stagnitto Ellis, in mildew protection gear, at right

THE FINANCIAL RESOURCES

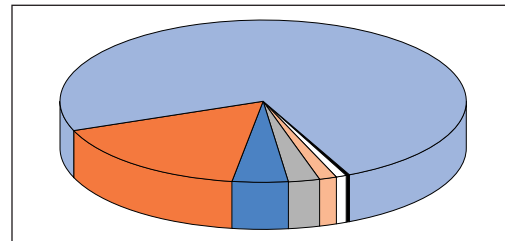
Funding Sources

Federal Appropriation	\$6,478,285
Trust Fund Allocation	1,002,000
Gifts & Grants	242,691
Endowments Income	34,996
Total	\$7,757,975



Expenditures

Personnel Costs	\$5,648,748
Library Materials (Collections)	1,256,203
Program Support	347,376
Cataloging Support	187,856
Miscellaneous	109,908
Staff Development	60,092
Public Programs	37,249
Total	\$7,647,431



TRAINING LIBRARIANS

- > Libraries' staff helped organize "Just in Time," a 2-day disaster-preparedness workshop for paper-based collections held in September at the Smithsonian Center for Materials Research and Education, and 20 of the Libraries' staff participated
- > The Libraries co-sponsored with the Research Libraries Group a 3-day Digital Imaging Workshop in October
- > The Libraries' Preservation Services Department hosted for 8 months intern Tina Mason, a graduate student in the University of Texas Austin's Preservation and Conservation for Archives and Libraries program.
- > Valerie Wheat, Museum Reference Center Librarian, completed the 1-year Association of Research Libraries Leadership and Development Training Program for librarians from racial minorities

EDUCATION ACTIVITIES AND SERVICE

Interacting with local universities

- > Two branch libraries, the Cooper Hewitt, National Design Museum Branch in New York City and the National Museum of American History Branch in Washington, DC, are serving as the principal libraries for Master's degree students of the Parson's School of Design
- > The Smithsonian Tropical Research Institute Branch gave 133 orientation tours to students from the Republic of Panama and central America this year
- > The Museum Support Center Branch maintained reserve-reading shelves for students in a conservation class at George Washington University
- > Margaret Dittmore, Anthropology Branch, did a presentation for Museum Studies students from George Washington University
- > William E. Baxter, Special Collections Department, spoke to U.S. Naval Academy midshipmen
- > Alvin Hutchinson, National Zoological Park Branch, met with psychology students from Georgetown University
- > The Anthropology Branch supplied books for a George Washington University anthropology class

Staff service in the American Library Association

- > In ALA's Association for Library Collections and Technical Services,
- > Sherry Kelley was chair of the Committee on Metadata and Cataloging
- > Ned Kraft was chair of the Out-of-Print Discussion Group
- > In ALA's Library Administration and Management Association, Mary Augusta Thomas was chair of the Fiscal and Business Officers Discussion Group and chair of the Editorial Advisory Board of the journal, *Library Administration and Management*
- > Martin R. Kalfatovic is editor of ALA's Library & Information Technology Association's newsletter, published electronically at <www.lita.org/>

Other professional service by SIL staff

- > Amy de Groff chairs the Education Working Group of the Federal Library and Information Center Committee
- > Mary Augusta Thomas is president of the District of Columbia Library Association

And SIL staff made 25 professional presentations this year at a variety of conferences and annual meetings, and served on numerous committees, planning groups, and task forces.

Providing financial support to scholars

- > The Dibner Fund supported three SIL Dibner Library Resident Scholars this year who spent productive hours working with materials in the Dibner Library of the History of Science and Technology.

LECTURE

Harvard Professor Katharine Park discussed "Visible Women: Anatomical Illustration and Human Dissection in Renaissance Italy" at the 1998 Dibner Library Lecture, supported by The Dibner Fund.



J. de Ketham, *Fasciculo de Medicina* (1493-4), [Plate 8]

An educational brochure

published for the Libraries' exhibition *Frontier Photographer: Edward S. Curtis* was supported by funds from the Smithsonian Office of Education. The fold-out brochure geared to high-school students featured an illustrated time-line of Curtis's life, "Things to Think About," and a list of suggested readings.

LICENSED PRODUCTS PROFITS

The Libraries earned \$16,578 in royalties in 1998 from the sale of licensed products authorized by the Smithsonian Office of Product Development and Licensing. Images from Libraries' collections appeared on china place settings, men's socks, silk scarves, Christmas ornaments, and jewelry made by licensees.

LIBRARIES BOARD ESTABLISHED

With the approval of the Board of Regents, the Libraries established a Board with seven founding members this year. The inaugural meeting was held on May 20. The Board will provide leadership during the upcoming campaign, help develop new constituencies and generate support nationwide for the Libraries' services, programs, and collections.

EXHIBITIONS AND PUBLICATIONS

EXHIBITIONS

In the Libraries Gallery, Washington, DC

- > to July 1998, *Audubon & the Smithsonian*, guest curated by Helena Wright (National Museum of American History)
- > September 23, 1998 – September 1999, *Frontier Photographer: Edward S. Curtis*, curated by William E. Baxter (SI Libraries)

In New York City

- > February-May 1998. *Arquitectonica: The Times Square Project*, curated by Stephen Van Dyk (SI Libraries) at the Cooper-Hewitt, National Design Museum



“Kingfisher” by John James Audubon, *The Birds of America* (1827-38)

SIL BOOKS LOANED TO EXHIBITIONS

Two major exhibitions in the newly renovated space at the Cooper-Hewitt, National Design Museum displayed materials from the Libraries’ collections at the CH Branch. *Fountains: Splash and Spectacle* featured 24 rare books describing and illustrating fountains from the Renaissance to the present day. Twenty-eight trade catalogs illustrated the theme of *Opening Our Doors*, including pamphlets and books describing silver dining flatware, needle and sewing catalogs, fabrics, and wallpapers. The Libraries’ loaned a copy of *De Beghinselen der Weeghconst* by Simon Stevin (Leyden, 1586) to the Pabellon Villanueva, Botanical Garden of Madrid for an exhibition celebrating the reigns of Philip II and Charles V.

- > Of the 58 books loaned by the Libraries for exhibition, 5 were shown in exhibitions in Washington, DC, 52 in New York City, and 1 in Spain.



“Three Chiefs – Piegan” by Edward S. Curtis (Montana, 1900)

VISITORS

- > 200 national and international visitors toured the branch libraries this year

PUBLICATIONS

- > *Modern African Art: A Basic Reading List* by Janet L. Stanley, Museum of African Art Branch Librarian, was the Libraries’ first original work published online

Eleven staff members published 37 articles, reviews, and bibliographies, and three books this year.

- > Research Associate Silvio A. Bedini was awarded the J. T. Fraser Prize for his book, *The Trail of Time: Time Measurement with Incense in East Asia* (1998) by the International Society for the Study of Time
- > Janet L. Stanley, Museum of African Art Branch Librarian, also published in print this year. Volume 6 of her *The Arts of Africa, An Annotated Bibliography* was released by the African Studies Association Press
- > Mary Augusta Thomas co-edited an American Library Association volume, *Information Imagineering*
- > Amy de Groff, Janice Stagnitto Ellis, Carolyn Hamilton, and Martin R. Kalfatovic published articles this year, Amy Levin published a bibliography online, and Nancy E. Gwinn, Sheila Riley, Amy DeGroff, Martin R. Kalfatovic, and Mary Augusta Thomas published reviews

SUPPORTING THE LIBRARIES' EFFORTS

DONORS OF FINANCIAL SUPPORT

\$25,000 and up

Nancy Wineland Castle
Joseph F. 3rd and Joan Cullman
Mrs. Jefferson Patterson

\$5,000 - \$24,999

Anonymous
The Edward S. Curtis Foundation
The Dibner Fund (David and Frances Dibner)
The Jaques Admiralty Law Firm

\$1,000 - \$4,999

Howard H. Baker, Jr.
Christopher Cardozo
The Curtis Centennial Project
The Curtis Collection
Robert J. Hurst
Frank A. Weil
Caspar W., Sr. and Jane Weinberger
Charlotte Wineland

\$500 - \$999

James M. Kemper, Jr.
Dudley and Lois Rochester
David Spencer

\$250 - \$499

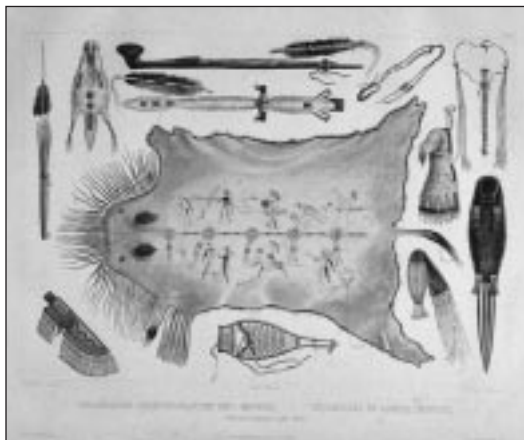
John and Lois Eberhard
Bill Lambert
Rosemary L. Ripley
Rodris Roth
Russell Train
Bruce Wasserstein

\$100 - \$249

Anonymous
Tobin and Anne Armstrong
Marion Oates Charles
Charlottesville Camera Club
Mary Lou Cowden
Douglas Evelyn
Alfred C. Glassell, Jr.
Marc Goldberg
Nancy E. Gwinn and John Y. Cole
Richard McG. Helms
James and Linda Hobbins
John Jameson
Keith A. Jones
Thomas E. Lovejoy
Roman Martinez IV
Alan and Betty Miller
Howard and Reba Oheim
William A. Oliver
Malcolm and Bettie Ripley
Russell A. Rourke
Russell Shank
Lawrence A. Skantze
Barbara J. Smith
Stanwyn Shetler
William Mitchell Van Winkle
Ulf Andreas Whist

CAMPAIGN FEASIBILITY STUDY

To prepare for the Smithsonian capital campaign, the Libraries commissioned a campaign feasibility study to assess potential donor interest in the Libraries' stated campaign funding priorities and to assist in refining the Libraries' plans and campaign goals. The results were very positive, and the Libraries' goals were viewed as reasonable and achievable.



"Utensils and Arms" (Tab. 21), Prince Maximilian Wied, *Reise in das Innere Nord-America in den Jahren 1832 bis 1834*. Atlas (1839-41), from the Charlotte and Lloyd Wineland Collection of Native American and Western Exploration Literature

SUPPORTING THE LIBRARIES' EFFORTS

DONORS TO THE COLLECTION

Rita Adrosko
John-Tokpabere Agberia
Chinedu A. Agbodike
Mr. and Mrs. John Aha
Richard Ahlborn
Harry A. Alden
Mrs. John E. Armstrong
Donald P. Avery
Robert O. Bach
Wang Ying Bai
Douglas B. Ball
Mary W. Ballard
Corrine Barsky
Joseph Barth
Silvio A. Bedini
Amy A. Begg
Abdallah Benanteur
Ernst H. Berninger
Richard E. Beteta
Erna Beumers
Kent Charles Boese
Alaine Apap Bolgna
Maxima M. Bond
Brigitte Bouret
Eric S. Borsting
Mary Brandwein
John Bratten
Michael K. Brett-Surman
William H. Bunting
Andrew Chaikin
Eddie Chambers
Elizabeth Chilver
Wallace Cleland
Anthony G. Coates
Jorge Conte-Porras
Richard Cooke
Mireya D. Correa
Guido Craveri
Laudine and George Creighton
Feng Dashun
Allen C. Davis
Diane DeBlois
Adolfo de Sostoa
Ana Maria de Vasquez
Warren W. Dexter
Joan Giffen Donahue
Laurence J. Dorr
Helen Dossche
Richard Doty
Robert Dowling
Lynn Downey
William S. Dudley
Chris Dunn
Chris Ebigbo
Roger Edde
Judith Eglington
Annaleen Eins
Charlotte Elton
David Erhardt
Eduardo Esquivel
Angele Etoundi Essamba
Eduardo Esquivel
Betty B. Faust
Marc Leo Felix
Larry Ferreiro
Anne M. Franks
Douglas Freund
Kimball L. Garrett
Anna Gradowska
Renee Guerin
Jorge Gumbe
Laura Gutierrez

Joseph P. Harahan
Elizabeth Harris
Robert D. Harris
Eleanor C. Harvey
Stanley Heckadon
Wayne Henderson
Robert S. Hoffmann
Paul House
Ramon E. Howe
Kuang-Nan Huang
Andrei Dumitru Iacobas
Funke C. Ifeta
Krydz Ikwuemesi
Pascal James Imperato
Rose Issa
Dele Jegede
Veronika Jenke
Grady E. Jensen
Lars Christian Jenssen
David W. Johnston
Ann Juneau
Martin R. Kalfatovic
Roy Kausa
Sherry Kelley
David A. Kent
Shuji Komatsu
Karl J. Krapek
Daniel C. Krummes
Herbert Lachmayer
Richard W. Leche, Jr.
Gwendolen R. Leighty
Richard A. Leyes, II
John Liddell
Olga Linares
Glenn Loney
Eleonora Louis
Dennis M. Lyden
Robert A. Malone
R. K. Malott
Joe T. Marshall, Jr.
Jean-Hubert Martin
Brian H. Mason
Michael D. Matthews
Pat McNees
James G. Mead
Charles Medearis

Rachel L. Mellon
Louise Meyers
Virginia Minton
Max Mohl
Owen D. Mort, Jr.
Lettie S. Multhauf
O. Odimayo
Ricardo Ojeda
Storrs L. Olson
Jack Padalino
J. B. Parker
Louis Perrois
John Picton
Richard A. Postman
Robin Poynor
Maynard S. Raasch
Randy Rach
William Rand
Clayton E. Ray
Nicholas C. Read
Robert K. Robbins
Daphne Ross
Ira Rubinoff
Carmen T. Ruiz-Fischler
Elizabeth M. Sanchez
Angel D. Santiago
George B. Saunders
Carsten Schulz
Alfredo Schael
Sven Scheiderbauer
Dr. Katesa Schlosser
Keith Fred Schmidt
Klaus Schneider
Ruth Sexton
Andy Shanken
Joshua Shapiro
Courtney Shaw
David Shayt
Ky Siriki
Neal G. Smith
I. Gregory Sohn
Kate Southey
Roger Staiger, Jr.
David R. Süvers
Joseph Suarez
Paul M. Taylor
Jan Thies
Dale Thomas
Mary Augusta Thomas
Dante Martins Teixeira
Herbert A. Trenchard
Ing. Umberto Ucelli
Richard Vari
Mary Ellen Vehlow
Alexander von Vegesack
Jane Villa-Lobos
Melvin J. Wachowiak
Roslyn A. Walker
Deborah J. Warner
Mary Jane West-Eberhard
John H. White
Lavonia Green Wiggins
Vince Wilcox
Ronald S. Wilkinson
Jeri Bernadette Williams
Elizabeth A. Willis
Frank H. Winter
Rainer Wirth
Norman E. Woodley
George Xanthakis
Diane T. Zinn
George R. Zug



Sheet music for "Smithsonian Polka" by W. Bergman (1855) seen in online exhibition, *From Smithsonian to Smithsonian*, at www.sil.si.edu