

DESCRIPTIVE CATALOGUE OF THE WASHINGTON RELICS IN THE UNITED STATES NATIONAL MUSEUM.

By THEODORE T. BELOTE,

Assistant Curator, Division of History, United States National Museum.

INTRODUCTION.

The collection of objects in the United States National Museum relating to George Washington consists of a variety of material gathered from numerous sources. While composed largely of articles of domestic and artistic interest, which were owned by Washington at Mount Vernon, the collection includes also mementos of his life in the field during the War of the Revolution, and a number of other miscellaneous relics of greater or less importance.

Mount Vernon house,¹ historically the most interesting of American mansions, and closely associated with nearly all the objects herein described, was erected in 1743 for Lawrence Washington, the half-brother of George, and so named in honor of Admiral Edward Vernon, R. N., under whose command Lawrence Washington had served during the British expedition against Cartagena in 1741. The property² passed into the hands of George after the death of Lawrence in 1752, and the house was later improved and enlarged. When Mrs. Washington died in 1802 Mount Vernon became, in accordance with Washington's will, the property of his nephew Bushrod Washington, who in turn bequeathed it to his nephew John Augustine

¹ Benson J. Lossing, in his work *Mount Vernon and Its Associations*, Hartford, 1870, has given an interesting popular account of the history of Mount Vernon and of the objects which the mansion contained during the lifetime of Washington. While the historical accuracy of some of Mr. Lossing's statements has been questioned, the work gives much information of value not elsewhere available.

² The original tract of land consisted of five thousand acres above Dogue Run which, in 1674, was granted by Governor Berkeley jointly to John Washington, great-grandfather of George and Lawrence Washington, and to Nicholas Spence, of Bedford, England. John Washington's half lay between Dogue Run and Little Hunting Creek. By his will, dated September 11, 1675, he bequeathed this Hunting Creek property to his son Lawrence Washington, grandfather of George, who in turn bequeathed it in 1697, to his daughter Mildred, from whom it was inherited in 1730 by Augustine Washington, father of George. In 1740 Augustine Washington conveyed the tract to his son Lawrence, and in 1743 confirmed the gift by will, providing, however, that should Lawrence die without issue the property should go to Lawrence's half-brother George. Lawrence died in 1752, leaving a widow and daughter. The daughter dying soon after, the estate passed to George Washington, but the widow of Lawrence retained a life interest in it, which interest she released to George Washington in 1754 in consideration of fifteen thousand pounds of tobacco to be given her annually during her natural life. She died in 1761. See *George Washington and Mount Vernon*, by Moncure Daniel Conway. *Memoirs of the Long Island Historical Society*, vol. 4, Brooklyn, N. Y., 1889.

Washington, from whom it passed to a son of the same name, and in 1858 was purchased from him by the Mount Vernon Ladies' Association.¹

By an act of Congress approved June 20, 1878,² the Government purchased a collection of Washington relics from G. W. Lewis and others, the heirs of Mrs. Lawrence Lewis,³ the adopted daughter of Washington and the wife of his nephew Major Lawrence Lewis. After the death of Mrs. Washington in 1802 these objects had passed into the hands of Mrs. Lewis, and on her death in 1852 were received by her heirs, who held them until their purchase by the Government in 1878, when they were deposited in the United States Patent Office, where they remained until transferred to the United States National Museum in 1883.

The objects purchased from the Lewis heirs form the greater portion of the Washingtoniana in the Museum, and are designated as belonging to the "Lewis collection" in the present catalogue. The sources of other Washington relics, received by the Museum at various times as loans or gifts, are given in connection with the description of the articles.

In the Museum collection of Washingtoniana, manuscripts are lacking. The science of history, however, is not confined to manuscripts alone for the sources of its data, and the collection as it stands is of great interest and value, both to the student of history and to the general public.

In the preparation of this catalogue a number of works on antiques have been consulted and references to these are given in footnotes. Besides the printed authorities referred to in the footnotes, the information herein given has been derived from labels accompanying the objects while in the Patent Office,⁴ and from the correspondence of the Museum authorities with the Patent Office authorities and with individuals who have had more or less personal knowledge of the various objects in the collection. Information concerning the collection, not otherwise attributed in the footnotes, has been derived from these manuscript sources now in the Museum files.

Acknowledgment should be made of the important assistance rendered in the preparation of this catalogue by Mr. A. Howard Clark, curator of the Division of History of the United States National Museum, under whose supervision the Washington collection was removed from the Patent Office to its present location in 1883.

¹ See *Mount Vernon and its Preservation, 1858-1910*, by Thomas Nelson Page, New York, 1910.

² See U. S. Statutes at Large, vol. 20, p. 218.

³ Eleanor Parke Custis (Nelly Custis), the granddaughter of Mrs. Washington, married Lawrence Lewis, son of Fielding Lewis and "Betty" Washington, sister of General Washington. See Appendix 1 of this paper.

⁴ Alfred Hunter, in his work, *A popular catalogue of the extraordinary curiosities in the National Institute, arranged in the building belonging to the Patent Office, Washington, 1858*, refers briefly to the Washington collection then in the Patent Office.

STATUES, PAINTINGS, AND ENGRAVINGS.

*Plaster statue of Washington.*¹—Life size figure in military uniform, representing Washington before Congress, resigning his commission as Commander in Chief of the Continental Army, Annapolis, Maryland, December 23, 1783. Designed by Ferdinand Pettrich and presented to the National Institute by the sculptor in 1842. Transferred from the U. S. Patent Office to the U. S. National Museum in 1883. Plate 1. Cat. No. 92679, U.S.N.M.

Plaster statue of Washington.—Life size figure in military uniform, designed by William Rudolph O'Donovan, being the original model of the bronze statue ordered by the State of New York for Washington's headquarters at Newburgh, New York, in 1886. From Maurice J. Powers. Plate 2. Cat. No. 125786, U.S.N.M.

Plaster bust of Washington.—Copy, made by Clark Mills in 1853, from the original life cast made by Houdon at Mount Vernon in 1785. Gift of Miss Elizabeth Bryant Johnston. Height, 19 inches; base, $7\frac{3}{4}$ by $10\frac{1}{4}$ inches. Plate 3. Cat. No. 218154, U.S.N.M.

Bronze bust of Washington.—Copy of the bust made by Houdon at Mount Vernon in 1785. Cast at the National Fine Art Foundry, New York. Height, 24 inches; base, $7\frac{3}{4}$ inches square. From Maurice J. Powers. Cat. No. 202333, U.S.N.M.

Plaster face mask of Washington.—Cast from the mold made at Mount Vernon by Houdon in 1785. Height, $9\frac{1}{2}$ inches; width, $7\frac{1}{2}$ inches. Lent by the National Society of the Daughters of the American Revolution. Cat. No. 3962, U.S.N.M.

*Portrait of Washington.*²—Oil painting, artist unknown. Half length, life size, and by the Lewis family regarded as a very excellent likeness. Retained at the Patent Office when the Lewis collection was transferred to the United States National Museum in 1883, and transferred to the Smithsonian Institution from the Department of the Interior in 1911. Size, 30 by 44 inches. Lewis collection. Cat. No. 276149, U.S.N.M.

Miniature portrait of Washington.—By John Trumbull. Oil on wood in the original frame of wood, which is carved and gilded. Three-quarter face to the right, and bust, in civilian dress of the period with dark coat and white neckerchief. Made from life during the period from 1792 to 1794, when Trumbull was engaged in painting his full-length portrait of Washington at the President's House in Philadelphia. Size, 6 by 7 inches. Lewis collection. Plate 4. Cat. No. 92356, U.S.N.M.

Miniature portrait of Martha Washington.—By John Trumbull. Oil on wood in the original frame of wood, which is carved and gilded.

¹ In connection with this statue and other objects of art mentioned in this list, see The National Gallery of Art, by Richard Rathbun, Washington, 1909. Bulletin 70, U. S. National Museum.

² See Annual Report of the Smithsonian Institution for 1911, p. 105.

Full face and bust, in dress of the period, of light material, with shawl about shoulders and white lace cap with blue ribbon. Painted from life during the period from 1792 to 1794. Size, 6 by 7 inches. Lewis collection. Plate 4. Cat. No. 92357, U.S.N.M.

Oil painting.—Supposed to represent Genesee Falls, New York. From Mount Vernon. Size, 39 by 49½ inches. Lewis collection. Cat. No. 92220, U.S.N.M.

Oil painting.—Moonlight scene on a rocky coast. From Mount Vernon. Size, 31 by 43½ inches. Lewis collection. Cat. No. 92221, U.S.N.M.

Engraved portrait of the Right Honorable Selina, Dowager Countess of Huntingdon.—By "J. Fittler, engraver to His Majesty." From a painting by R. Bowyer, "Miniature painter to His Majesty." The countess is shown seated at a table, her left arm resting on a large volume. Presented to Washington by the countess. Size, 10½ by 8½ inches. Lewis collection. Cat. No. 92405, U.S.N.M.

Portrait of Martha Washington.—Colored print, published about 1790 by J. Testi, 10 Leather Lane, Holborn, London. Mrs. Washington is shown attired in an evening gown of the period and seated upon a chair under a crimson canopy. She wears a pearl necklace and a diadem. The legend reads: "Lady Washington." Gift of C. R. Whedon. Size, 7¾ by 5¾ inches. Cat. No. 122189, U.S.N.M.

Portrait of Washington.—Colored print, published about 1790 by J. Testi, 10 Leather Lane, Holborn, London. Washington is shown in military uniform seated upon a chair under a canopy. The legend reads: "General Washington." Gift of C. R. Whedon. Size, 7¾ by 5¾ inches. Cat. No. 122190, U.S.N.M.

FURNITURE.

Washington's easy chair.—Plain heavy solid wing-check frame of Happlewhite design with curved arms extending from front to top of back.¹ Upholstered in linen with hair cushions. Original cover lacking. Re-covered about 1850 with chintz cloth of striped design. From the bedroom of Washington at Mount Vernon, and used by him a short time before his death. Height, 48 inches; width, 31 inches; depth, 22 inches. Lewis collection. Plate 27. Cat. No. 92216, U.S.N.M.

Twelve black walnut chairs.—Backs open and straight, Sheraton style, the splats carved in the shape of a lyre. Legs square and straight. Seats upholstered with blue and drab cloth of a delicate floral pattern with circular designs in center. Height, 36 inches; width, 20½ inches; depth, 17½ inches. Lewis collection. Plate 5. Cat. No. 92201-12, U.S.N.M..

¹ Compare N. Hudson Moore, *The Collector's Manual*, New York, 1906, p. 56.

Mahogany footstool.—Original cover lacking. Re-covered about 1850 with large figured red, blue, green and brown Brussels carpet. Used in Washington's bedroom at Mount Vernon. Length, 17 inches; width, 13 inches; height, $8\frac{1}{2}$ inches. Lewis collection. Cat. No. 92213, U.S.N.M.

Two mahogany armchairs.—Open backs, Hepplewhite style, the splats carved in shape of a shield with four vertical curved bars. Arms curved outward and downward. Front legs straight, back legs curved inward. Upholstered with black horsehair cloth. Part of the furniture of the President's house in Philadelphia, during Washington's second administration, 1793–1797. Height, 40 inches; width, 28 inches; depth, 19 inches. Lewis collection. Plate 6. Cat. No. 92214–15, U.S.N.M.

*Two cherry crickets.*¹—Legs mortised through the tops and braced with small blocks. Sides braced with curved brackets. Length, $16\frac{3}{4}$ inches; width, $12\frac{3}{4}$ inches; height, $11\frac{1}{2}$ inches. Lewis collection. Cat. No. 92217–18, U.S.N.M.

Mahogany table with marble top.—Frame plain. Legs curved outward, terminating in globular feet. Top of encrinal gray limestone, with reddish-brown and white tracings. Length, 44 inches; height, 30 inches; width, 26 inches. Lewis collection. Plate 27. Cat. No. 92402, U.S.N.M.

Mahogany table.—Sides and legs elaborately carved with conventional floral and geometrical designs. Top inclosed by a narrow strip rising an inch and a quarter above the sides. Used at Mount Vernon as a stand for ornaments and in serving tea. Height, 27 inches; width, 23 inches; length, 32 inches. Lewis collection. Cat. No. 92640, U.S.N.M.

Parlor mirror.—A central rectangular glass is surrounded by four narrow sections of glass separated from the central piece by gilded beadwork. The whole is inclosed by a broad carved gilt frame, surmounted by a small rectangular section of glass inclosed by a plain gilded bead. Above this rises an ornate slender crest of carved wood in the shape of a vase with an ornamental scroll of gilt wire arranged at either side extending down half the length of the mirror. Size, $43\frac{1}{2}$ by $30\frac{1}{4}$ inches. Lewis collection. Plate 27. Cat. No. 92219, U.S.N.M.

Large parlor mirror.—The glass is divided into two sections, not separated by beadwork, and the whole is inclosed by a broad plain gilt frame. A narrow oak frame has been added for the sake of protection. Size, 82 by 43 inches. Lewis collection. Cat. No. 92224, U.S.N.M.

¹ All objects not otherwise indicated were used by Washington at Mount Vernon. The Museum collections include a wooden model of this mansion showing its interior arrangement and the additions made at various times to the original house erected for Lawrence Washington in 1743. Length, 60 inches; width, 24 inches; height, 24 inches. Lent by Mr. H. H. Dodge. Cat. No. 255268, U.S.N.M.

Toilet mirror.—The glass is in two rectangular sections, upper and lower, the whole inclosed in a narrow frame of black walnut surrounded with a thin strip of maple. The glass of the upper section is decorated in gilt with a lacquered design of roses and leaves arranged in festoons with bows of ribbon. Presented by General Washington to Mrs. Washington in 1795. Size, 20 by 18 inches. Upper section 20 by 5 inches. Lewis collection. Cat. No. 92225, U.S.N.M.

Mahogany bedstead—consisting of the following pieces: Two plain square foot posts; two ornately-carved head posts, lower part of each square, and upper part fashioned after Greek columns; plain headboard with curved top; plain footboard with straight top; two plain side boards; thirteen plain pine slats; four plain pine slats for curtain supports. Presented by Admiral Edward Vernon, Royal Navy, to Lawrence Washington, who had served as captain in the expedition undertaken by Admiral Vernon against Cartagena in 1741.¹ Bequeathed to Washington by his half-brother, Lawrence, in 1752. Height, 6 feet 6 inches; width, 4 feet 8 inches; length, 6 feet 4 inches. Lewis collection. Cat. No. 92411-22, U.S.N.M.

Fire bellows.—Oval in shape with cone-shaped spout of iron. Sides and handles of ash wood, the former carved with a succession of concentric rings. Body of heavy brown leather, fastened to sides with iron tacks. Length, 27 inches; width, 11 inches. Lewis collection. Cat. No. 92534, U.S.N.M.

CANDELABRA, LAMPS, AND CANDLESTICKS.

Pair of glass candelabra.—Description of each as follows: Base pyramidal in shape and surmounted by a circular silver top above which rises a slender triangular stem of glass, surmounted by a circular dish-like top with scalloped edges upon which rests a cup-shaped ornament. From the silver top of the base extend four six-sided glass arms nearly at right angles to each other. Two of these extend upward, outward, and downward, and two extend outward, downward, and upward in the form of an "S," and support on each end cylindrical-shaped candle sockets, at the upper and lower ends of which are star-shaped ornaments projecting beyond the socket and from which hang glass pendants. The four arms are united by a gracefully festooned chain of glass pendants joined with metal links. The glass is of unusual clearness and the numerous pendants give a beautiful prismatic effect to the pieces. Height, 23 inches; width, 14 inches; base, 4½ inches square. Lent by Miss Mary Custis Lee. Cat. No. 2088, U.S.N.M.

Pair of silver-plated wall-bracket lamps.—Each lamp consists of a circular bracket fitted with a horizontal arm which extends outward

¹ See Introduction to this paper, p. 1.

and supports an octagonal urn-shaped receptacle for oil. From the bottom of this urn extends horizontally a tube supporting on the end a cylindrical wick holder fitted with a small blue glass chimney. The wick is adjusted to the required height by means of a small rack screw on the side of the holder. The piece is plain with the exception of the receptacle for oil which is decorated at the top with a narrow band of floral design below which are engraved broad festoons of flowers. Height, $12\frac{1}{2}$ inches; width, $8\frac{3}{4}$ inches. Lewis collection. Plate 7. Cat. No. 92244-45, U.S.N.M.

Silver-plated double lamp.—The base is of glass, pyramidal in shape and supports at the top an urn-shaped receptacle for oil. To the right and left of the urn extends a silver-plated tube supporting cylindrical holders for wicks and blue glass chimneys. Height, $14\frac{1}{4}$ inches; width, $12\frac{1}{2}$ inches; base, 4 inches square. Lewis collection. Plate 8. Cat. No. 92243, U.S.N.M.

Silver-plated candlestick.—The base is octagonal, four of the sides being straight and four concave. The short stem rises above the base like an inverted bell. Used in one of the bedrooms at Mount Vernon. Base, $6\frac{3}{4}$ by $4\frac{3}{4}$ inches; height of stem, $4\frac{1}{4}$ inches. Lewis collection. Cat. No. 92410, U.S.N.M.

Brass candelabrum with reflector.—A heavy circular base supports a slender steel rod 21 inches high terminating in a brass ring. At right angles to the rod is a movable standard, bearing at either end a candlestick with circular base and cylindrical socket, and adjustable to the desired height by means of a screw attachment. The candlesticks, by means of the short arms joining them to the standard, may be swung to the front, side, or back. Behind the rod rises a brass standard curving outward and supporting a rectangular polished brass reflector adjustable to the desired height by means of a screw attachment. Used by Washington during the War of the Revolution, in the President's house in Philadelphia, and at Mount Vernon. Height, 22 inches; width, 15 inches; diameter of base, $5\frac{3}{4}$ inches. Reflector, $11\frac{1}{2}$ inches by $6\frac{3}{4}$ inches. Lewis collection. Plate 7. Cat. No. 92255, U.S.N.M.

Pair of silver-plated candlesticks.—Description of each as follows: The circular base is decorated with two lines of beadwork and one of oak leaves. The stem, which rises above the base like a slender inverted cone, is decorated with a set design of geometrical character. Immediately below the socket, which is decorated with beadwork and oak leaves, is a design of drapery, gracefully festooned about the stem. Height, $10\frac{1}{2}$ inches; diameter of base, $5\frac{1}{4}$ inches. Lewis collection. Cat. No. 92247, U.S.N.M.

Hall lantern.—A rectangular iron frame set with glass sides and bottom. The four corner strips of the frame curve over and unite in the center at the top to form an iron ball fitted with a ring for

suspending the lantern from the ceiling. The bottom and sides are ornamented with slender open-work strips of iron. Dimensions 12 by 12 by 18 inches. Lent by Miss Mary Custis Lee.¹ Cat. No. 2089, U. S. N. M.

TABLE FURNISHINGS.²

Nine silver-plated knives and forks.—Four knives, the blades with elongated V-shaped backs and slender points slightly curved upward; handles plain with knob-shaped ends; length, 10 inches. Five three-tined forks with handles of same type as the knives described above. The handles of each of the knives and forks are engraved with the Washington crest, a raven issuing from a coronet. Marks indistinguishable. Length, 8½ inches. Lewis collection. Plate 9. Cat. No. 92342-50, U.S.N.M.

Six salt cellars and stands.—Salt cellars of dark-blue Bohemian glass, an eight-pointed star design on bottom of each. Stands of silver plate oval in shape and ornately decorated in openwork, with festoons of lines and beadwork upheld by shields on either side and at the ends. Length, 3½ inches; height, 2 inches; width, 2¾ inches. Lewis collection. Plate 10. Cat. No. 92249, U.S.N.M.

Silver-plated cake basket.—Oval in shape. Base an upright band of plate decorated with two lines of beadwork and an openwork design of a succession of tiny rectangles. Sides decorated with an ornate floral design in openwork and with rows of beadwork. Handle of heavy plate ornamented with openwork at the top and hinged at either end to side of basket. Length, 14½ inches; width, 10¼ inches; height, 3½ inches. Lewis collection. Plate 10. Cat. No. 92341, U.S.N.M.

Two silver-plated trays.—Circular in shape, with shallow sides. Decorated with the Washington coat of arms³ and two lines of beadwork. Diameter, 10 inches. Lewis collection. Plate 11. Cat. No. 92339-40, U.S.N.M.

Silver-plated tray.—Oval in shape, with the sides decorated in openwork, with a succession of miniature archways. At either end the sides are narrowed, rounded, and slightly raised above the base to serve as handles. Length, 20 inches; width, 15 inches; height, 1¼ inches. Lewis collection. Plate 10. Cat. No. 92338, U.S.N.M.

Three table coasters or stands for wine bottles.—The circular base of each is of oak wood, surrounded and slightly surmounted by a heavy band of openwork silver plate. The bottoms are covered with green

¹ Since the above was written this object has been withdrawn from the Museum by the owner.

² Unless otherwise described, the pieces of silverware and chinaware listed are without marks.

³ A silver shield, divided horizontally by two crimson bars into five alternate white and crimson stripes, the first of which bears three crimson stars. The similarity of this design in certain points to that of the United States flag has often been noted by writer on the history of the latter subject.

baize. Diameter, 5 inches; height, $1\frac{1}{4}$ inches. Lewis collection. Plate 10. Cat. No. 92335-37.

Wooden tea tray.—Oval in shape; rosewood bottom covered underneath with green baize, the upper side decorated with a large oval floral design in inlaid woods, the whole surrounded by a wreath of rosebuds intertwined. A narrow raised rim of maple with a scalloped edge encircles the tray, which is fitted at either end with a bronze handle. Presented to the National Institute by F. P. Butler and transferred from the United States Patent Office in 1883 to the United States National Museum. Width, 24 inches; length, 32 inches; handles, $3\frac{1}{4}$ by $1\frac{1}{2}$ inches; height of side, $\frac{5}{8}$ of an inch. Plate 12. Cat. No. 92525, U.S.N.M.

Cutlery case.—Oak box with convex front and hinged lid, the whole covered with shagreen. Tiers of 48 small compartments, lined with green velvet, for knives and forks, rise one above the other from front to rear of the case, which is fitted with a lock and two small iron handles, one on either side near the front. Base, 9 by $9\frac{1}{2}$ inches; height in front, $7\frac{1}{2}$ inches; height in rear, $13\frac{1}{2}$ inches. Lewis collection. Plate 13. Cat. No. 92400, U.S.N.M.

*Silver wine cooler.*¹—Owned by Washington and presented by him to Oliver Wolcott, Secretary of the United States Treasury, 1795-1800. This piece of tableware, one of a number of the same type imported by Washington from France, is of an elliptical urn shape and is decorated on either side at the top with a lion's head, from which depends a small silver handle. Engraved on the front: "Presented by George Washington to Oliver Wolcott, Secretary of the Treasury." Length, 11 inches; width, $6\frac{1}{2}$ inches; height, 8 inches. Lent by Miss Emily Tuckerman. Cat. No. 283159, U.S.N.M.

CHINAWARE.

Nine pieces of blue and white china.—Decorated with scenes of Oriental design and commonly known as old blue Canton ware. Used at Mount Vernon on ordinary occasions.

(1) *Octagonal platter*, with scalloped corners. Decorated with a scene showing two deer and a clump of trees in the foreground and a house and trees in the background. The picture, which is surrounded by a single narrow line, is lacking in detail. The rim of the platter is decorated with a narrow set design of butterfly wings, plants, and diaper work. Length, 17 inches; width, $13\frac{1}{4}$ inches; Lewis collection. Cat. No. 92226, U.S.N.M.

(2) *Octagonal platter*, with scalloped corners. Decorated with a scene showing in the foreground a promontory with a house, rocks, and trees and in the background on the right an island with a pagoda

¹ See Lossing's Mount Vernon and Its Associations, pp. 263-265.

and trees. The rim bears a design of floral and diaper work. Length, $16\frac{1}{2}$ inches; width, $12\frac{1}{2}$ inches. Lewis collection. Cat. No. 92227.

(3) *Octagonal platter*, with scalloped corners. Decorated with a land and water scene showing houses, a pagoda, trees, a bridge, boats, and a flock of birds in the background. The rim bears a heavy border of diaper work encircled with a floral design. Length, $16\frac{1}{2}$ inches; width, $13\frac{1}{4}$ inches. Lewis collection. Plate 14. Cat. No. 92229, U.S.N.M.

(4) *Octagonal platter* with scalloped corners. Decorated with a land and water scene showing in the foreground on the right a house and garden surrounded by a wall, the whole connected by a bridge with a promontory on the left. In the background is an island with trees and houses. On the water are three boats and in the air a flock of birds. The rim bears a design of butterflies and diaper work. Length, 16 inches; width, $12\frac{1}{2}$ inches. Lewis collection. Plate 14. Cat. No. 92230, U.S.N.M.

(5) *Circular platter*.—Decorated with a landscape scene showing a large willow tree with shrubbery to the right and left. About the rim is a complicated design of butterflies and flowers mingled with diaper work. Diameter, 15 inches. Lewis collection. Cat. No. 92228, U.S.N.M.

(6) *Washbowl*.—The interior is decorated with a scene at the mouth of a river showing on the right in the foreground a large house in a clump of trees. On the left in the background is a house on a promontory among trees. On the river appears a boat and in the air two birds. The interior near the rim bears also a band of diaper design. The rim flares outward and bears on the top a narrow band of beadwork. The exterior is decorated with three floral designs. Height, $4\frac{1}{4}$ inches; diameter, $11\frac{1}{2}$ inches. Lewis collection. Plate 15. Cat. No. 92231, U.S.N.M.

(7) *Guglet or water bottle*.—Decorated with a scene on the banks of a river, showing houses and trees. Two birds appear in the air and on the river a boat with a man at the stern. A broad band of diaper pattern encircles the stem. Diameter of base, 3 inches; diameter of mouth, $1\frac{3}{4}$ inches; diameter of body, $5\frac{1}{4}$ inches; height, $9\frac{3}{4}$ inches. Lewis collection. Plate 18. Cat. No. 92390, U.S.N.M.

(8) *Punch bowl*.—The interior is plain with the exception of a band of floral design near the rim broken by four heart-shaped medallions equally distant apart. One-half of the exterior is covered with large floral designs. The opposite side bears a single flower with two leaves. Height, 5 inches; diameter, $11\frac{1}{4}$ inches. Lewis collection. Plate 15. Cat. No. 92232, U.S.N.M.

(9) *Chinese vase*.—Decorated with a scene on the banks of a river and with a cloud-like design on the stem. Diameter of base, $1\frac{1}{2}$ inches; diameter of mouth, $\frac{3}{4}$ inch; diameter of body, $3\frac{1}{4}$ inches; height, $6\frac{3}{4}$ inches. Lewis collection. Plate 18, Cat. No. 92391, U.S.N.M.

Three Chinese vases.—Decorated in blue and gold with Chinese landscapes and water views. A narrow band of diaper pattern encircles the top and bottom of each. The lids are surmounted with the figure of a dog with mane and claws.¹ The dimensions of each vase are as follows: Diameter of bottom, $3\frac{1}{2}$ inches; diameter of mouth, $1\frac{3}{4}$ inches; diameter of top, $3\frac{1}{2}$ inches; height, $10\frac{1}{8}$ inches. Lewis collection. Plate 16. Cat. No. 92386–92388, U.S.N.M.

Chinese vase.—Decorated in blue and gold with Chinese landscapes and water views. A narrow band of diaper pattern encircles the top and bottom. Mouth flares outward. Diameter of base, $3\frac{1}{4}$ inches; diameter of mouth, $5\frac{3}{8}$ inches; height, $10\frac{1}{8}$ inches. Lewis collection. Cat. No. 92389, U.S.N.M.²

Porcelain saucer.—Interior decorated with colored drawing of four Chinese figures, two men and two women. One of the men leans against a horse and is dressed in armor, the other carries a sword. One woman is seated, the other stands by the side of a vase. The interior of the rim bears a gilt band of geometrical and scroll design. Diameter, $8\frac{1}{4}$ inches; height, $1\frac{1}{4}$ inches. Lewis collection. Cat. No. 92353, U.S.N.M.

China bowl.—Interior without decoration. A narrow band of gilt encircles the exterior at top and bottom. The outside of the rim is decorated with a succession of wreaths of red roses and green leaves intertwined. Above the intersections of the wreaths are small dark-blue triangular designs with concave sides. The side of the bowl bears the monogram "G. W." in gold on a ground of golden-brown cloud surmounted by a tiny rose wreath. A set of china of this type was presented to Washington in 1782 by the Count de Custine,³ one of the French officers who volunteered their services to the American Colonies during the War of the Revolution. Diameter, $8\frac{1}{4}$ inches; height, 4 inches. Lewis collection. Plate 17. Cat. No. 92379, U.S.N.M.

Wedgwood plate.—Of soft velvety cream color. The bottom is made in imitation of closely woven wickerwork. The sides are of open lathwork. Diameter, $8\frac{1}{2}$ inches. Lewis collection. Plate 18. Cat. No. 92385, U.S.N.M.

Wedgwood fruit dish.—Of soft velvety cream color. The bottom is made in imitation of closely woven wickerwork. The sides are of

¹ The dog "Fo" is the habitual guardian of the Buddhist altar and temple. With its claws, mane, and tail it bears much the semblance of a lion. It is often seen on the top of vases, forming the knob of the cover. See Joseph Marryat, *History of Pottery and Porcelain*, London, 1868, p. 266.

² Mrs. Alice Morse Earle, in her work *China Collecting in America*, New York, 1892, gives an interesting account of the Washington china, and publishes a letter from Washington to Tench Tilghman, of Baltimore, in connection with a notice which appeared in the *Baltimore Advertiser* of August 12, 1785, announcing the sale of certain chinaware just imported from the East by Captain O'Donnell, of the ship *Pallas*. It is quite probable that the 13 pieces of china described above, as well as the Cincinnati plate described on page 12, were purchased at this time for Washington by Colonel Tilghman.

³ Adam Philippe, Count de Custine, purchased the Niderviller porcelain factory near Strassburg between 1774 and 1780. The Niderviller pieces are noted for the purity of their colors and the richness and delicacy of their decorations. Count de Custine was beheaded in 1793.

open lathwork. Diameter, $7\frac{1}{2}$ inches; height, $2\frac{1}{4}$ inches. Lewis collection. Plate 18. Cat. No. 92384, U.S.N.M.

Three white-china plates.—Circular in shape, with 12 scallops in rim. The bottoms bear the following inscription in red: "MANUFre. Mgr. le DUC Angouleme Paris." Made about 1780 in Paris by Dihl and Guerhard, manufacturers under the patronage of the Duc d'Angouleme. Called "porcelaine d'Angouleme."¹ Diameter, 10 inches; height, $1\frac{5}{8}$ inches. Lewis collection. Cat. Nos. 92233, 92235, 92248, U.S.N.M.

Three white-china plates.—In description the same as the three plates noted above (Cat. Nos. 92233, 92235, 92248), but unmarked. Lewis collection. Cat. Nos. 92236, 92237, 92239, U.S.N.M.

White-china fruit dish.—Shape, an irregular pentagon with sides alternately convex and concave. Rim fluted in imitation of a shell. Width, $9\frac{1}{2}$ inches; height, 2 inches. Decorated and marked as plates described above. (Cat. Nos. 92233, 92235, 92248.) Lewis collection. Cat. No. 92353, U.S.N.M.

White-china fruit dish.—Shape, an irregular square. Decorated and marked as the specimen described above. (Cat. No. 92353.) Corners rounded and sides slightly concave. Length of sides, 9 inches. Lewis collection. Cat. No. 92352, U.S.N.M.

White-china bowl.—Circular, with six scallops in rim. A narrow band of gilt about the bottom and the rim. Diameter, $10\frac{1}{8}$ inches; height, 4 inches. Lewis collection. Cat. No. 92351, U.S.N.M.

Two white-china platters.—Shape of each, an irregular oval. Rims decorated with scallops and a narrow band of gilt with indented edge on interior. Length, $13\frac{3}{4}$ inches; width, $10\frac{5}{8}$ inches. Lewis collection. Cat. Nos. 92354, 92355, U.S.N.M.

Five white Sevres china plates.—Decorated with scalloped edges and a narrow band of gilt about the rim. On two of the plates the band of gilt is indented on the interior. Bottom bears in blue two interlaced "L's," the mark used by the Royal Sevres porcelain factory from 1756 to 1777.² Diameter, 10 inches; height, $1\frac{1}{2}$ inches. Lewis collection. Cat. Nos. 92234, 92238, 92240-92242, U.S.N.M.

Two white Sevres china dishes.—Circular in shape, with scalloped edges. Rims decorated with a narrow band of gilt. Bottoms marked as the specimens described above. Diameter, $8\frac{3}{8}$ inches; height, $1\frac{5}{8}$ inches. Lewis collection. Cat. Nos. 92380-92381, U.S.N.M.

White Sevres china gravy boat with cover.—Decorated with two narrow indented bands of gilt and one plain band of gilt. Bottom marked as the specimens described above. Length, $9\frac{1}{4}$ inches; width, 6 inches; height, $4\frac{1}{4}$ inches. Lewis collection. Cat. No. 92383, U.S.N.M.

¹ See Marks and Monograms on Pottery and Porcelain, by William Chaffers, London, 1897, page 576.

² Sevres china of this period was usually marked with a letter of the alphabet placed within the cipher, thus indicating the year in which it was made, "A" signifying 1753, and so on. The pieces in the Lewis collection are undated. This, however, is not uncommon. See Chaffers, page 597.

*Cincinnati china plate.*¹—Blue and white Canton ware, the interior decorated with a flying figure of Fame with golden-brown wings, blowing a trumpet. The figure is clothed in green with a sash of red, and in the left hand holds suspended from a blue ribbon the insignia of the Society of the Cincinnati. This design is encircled with a single line of dark-brown arrowheads all pointing in the same direction, and immediately beyond is a broad band of diaper pattern. The scalloped rim of the piece is decorated with a design of flowers and butterflies in medium blue with a single outside line of beadwork. Diameter, $9\frac{3}{8}$ inches. Gift of Judge Joseph Holt. Cat. No. 123104, U.S.N.M.

"Martha Washington" china cup and saucer.—Part of a set of china presented to Martha Washington by Mr. Van Braam,² one of Washington's friends, and on account of the design commonly called "Martha Washington china." Decorated with a sunburst of gold, below which appears a red ribbon scroll inscribed: "Decus et tutamen ab illo." Above, in the center of the sunburst, is a green laurel wreath inclosing the monogram, "M. W." The rims are decorated with gilt lines, immediately below which is a blue and gold serpent. Below this appears a chain of alternate large green and small gold links. Within the green links appear the names of the following States: North Carolina, South Carolina, Georgia, New Hampshire, Massachusetts, Vermont, Rhode Island, Connecticut, New York, New Jersey, Pennsylvania, Delaware, Maryland, Virginia, and Kentucky. Dimensions of cup: Diameter of base, $1\frac{5}{8}$ inches; diameter of top, $3\frac{1}{4}$ inches; height, with cover, $4\frac{1}{4}$ inches. Dimensions of saucer: Diameter, $6\frac{1}{4}$ inches; height, $1\frac{1}{2}$ inches. Lewis collection. Cat. No. 92394, U.S.N.M.

GLASSWARE.

Blue glass bowl.—Probably used for sugar; top lacking. American ware with corrugated surface. Diameter, 5 inches; height, 3 inches. Lewis collection. Cat. No. 92378, U.S.N.M.

Eight rum or punch glasses.—Each plain and keg-shaped, with handle extending nearly the entire height of glass. Diameter, $2\frac{1}{2}$ inches; height, $2\frac{1}{2}$ inches. Lewis collection. Plate 18. Cat. Nos. 92358-65, U.S.N.M.

Two glass tumblers.—(1) Encircled with a succession of parallel raised lines. Diameter, $3\frac{1}{2}$ inches; height, 3 inches. Lewis collection. Cat. No. 92366, U.S.N.M.

(2) Decorated with a delicate design of draped lines and eight-pointed stars. Diameter of bottom, $1\frac{3}{4}$ inches; diameter of top, $2\frac{5}{8}$ inches; height, 3 inches. Lewis collection. Cat. No. 92367, U.S.N.M.

¹ A number of sets of china bearing the insignia of the Society of the Cincinnati were imported from the Orient by original members of the society. Compare page 16 of this paper, Note 1, and Mrs. Alice Morse Earle's *China Collecting in America*, page 239.

² See copy of Martha Washington's will in Benson J. Lossing's *Mount Vernon and Its Associations*, page 422; also Mrs. Alice Morse Earle's *China Collecting in America*, page 240.

Nine wine glasses.—(1) With double base, lower part square, upper part circular. The outside of the rim is decorated with a row of individual daisies. Base, $1\frac{7}{8}$ inches square; height, $4\frac{1}{8}$ inches. Diameter of top, $2\frac{1}{2}$ inches. Lewis collection. Plate 19. Cat. No. 92368, U.S.N.M.

(2) Cut glass with circular base. Diameter of top, 2 inches; diameter of base, $2\frac{3}{8}$ inches; height, $3\frac{3}{4}$ inches. Lewis collection. Plate 19. Cat. No. 92369, U.S.N.M.

(3) Cut glass with circular base. Diameter of top, $2\frac{1}{2}$ inches; diameter of base, $2\frac{1}{2}$ inches; height, 4 inches. Lewis collection. Cat. No. 92370, U.S.N.M.

(4) Conical, and decorated with a delicate design of four horizontal lines of eight-pointed stars, the individual stars of the top row being inclosed in rectangles, above and below each of which is a line of tiny triangles. Diameter of base, $2\frac{1}{4}$ inches; diameter of top, $2\frac{1}{2}$ inches; height, $4\frac{7}{8}$ inches. Lewis collection. Plate 19. Cat. No. 92372, U.S.N.M.

(5) Cylindrical, ornamented with a design of festooned globes and stars. Between each festoon is a sunburst. Diameter of base, $2\frac{7}{8}$ inches; diameter of top, $2\frac{1}{4}$ inches; height, 7 inches. Lewis collection. Plate 19. Cat. No. 92373, U.S.N.M.

(6) Conical, etched about the top with a band of individual daisies. Diameter of base, $2\frac{1}{2}$ inches; diameter of top, $2\frac{3}{8}$ inches; height, $6\frac{1}{4}$ inches. Lewis collection. Plate 19. Cat. No. 92374, U.S.N.M.

(7 and 8) Two conical champagne glasses. The stems are decorated with cane work in a succession of ascending spiral lines. Diameter of base, $3\frac{1}{8}$ inches; Diameter of top $2\frac{3}{8}$ inches, height, $7\frac{1}{2}$ inches. Lewis collection. Plate 19. Cat. Nos. 92375–76, U.S.N.M.

(9) Large conical wine glass. The stem is decorated with cane work in a succession of ascending spiral lines. Diameter of base, $3\frac{3}{4}$ inches; diameter of top, $3\frac{1}{2}$ inches; height, $7\frac{1}{2}$ inches. Lewis collection. Plate 19. Cat. No. 92377, U.S.N.M.

Glass decanter.—Neck and base scalloped. Diameter, $3\frac{5}{8}$ inches; height, $8\frac{1}{8}$ inches. Lewis collection. Cat. No. 92371, U.S.N.M.

PERSONAL RELICS OF WASHINGTON.

Infant's robe.—White brocade silk lined with old-rose China silk. About two-thirds of the lining is lacking. Used on the occasion of Washington's christening. Size, 36 by 37 inches. Lewis collection. Cat. No. 92223, U.S.N.M.

Continental Army uniform.—Coat, without military insignia, of dark-blue cloth with buff facings and plain gilt buttons. Waistcoat of buff cloth with plain gilt buttons. Knee breeches of buff cloth. Worn by Washington when he resigned his commission before Congress as Commander in Chief of the Continental Army at

Annapolis, Maryland, December 23, 1783. Presented to the United States Government by George Washington Parke Custis and placed in the U. S. Patent Office. Transferred to the U. S. National Museum in 1883. Plate 20. Cat. Nos. 92641-43, U.S.N.M.

Waistcoat and small clothes worn by Washington.—Waistcoat of buff woolen cloth; collar, front, and pocket flaps and buttons embroidered with blue and yellow silk. Knee breeches of buff silk, and knee breeches of buff cloth. Presented to the United States Government by George Washington Parke Custis and placed in the U. S. Patent Office. Transferred to the U. S. National Museum in 1883. Cat. Nos. 92644-46, U.S.N.M.

*Tents used by Washington during the War of the Revolution.*¹—(1) *Sleeping tent roof and sides.*—Ends lacking. Made of a single rectangular piece of white home-woven linen with a striped design of interwoven parallel lines. Door strip of same material, 51 inches square. Length on ridge pole, 8 feet; roof slant, 6 feet; height of side wall, 6 feet. Presented to the United States Government by George Washington Parke Custis in 1844 and placed in the U. S. Patent Office.² Transferred to the U. S. National Museum in 1883. Cat. No. 92552, U.S.N.M.

(2) *Marquee tent.*—Oval-shaped roof, made of heavy home-woven linen. Edge scalloped and faced with strip of home-woven red flannel. Thirteen seams on ends, seven seams in central piece. Two holes in roof for supporting poles. Twenty guy ropes attached to top. Length on ridge pole, 13½ feet; roof slant, 10 feet; circumference, 80 feet. Side wall of same material, rectangular in shape. Height, 5 feet 6 inches; length, 80 feet. Lent by Miss Mary Custis Lee. Cat. No. 2083, U.S.N.M.

(3) *Marquee tent roof.*—Oval in shape. Made of home-woven heavy brown woolen material. Length on ridge pole, 13 feet; roof slant, 9 feet; circumference, 75 feet. Side wall lacking. Lent by Miss Mary Custis Lee. Cat. No. 2084, U.S.N.M.

Tent poles, pegs, and pouches.—(1) *Oak ridge pole,* in three sections. Length united, 12½ feet; diameter, 4 inches. Ends of each section protected by heavy iron bands 3⅞ inches long, those on the ends of the middle section projecting beyond the wood and forming sockets for the ends of the next section. Lent by Miss Mary Custis Lee. Cat. No. 2082, U.S.N.M.

(2) *Oak upright pole.*—In two sections. Ends of each section protected with heavy iron bands. Diameter, 4 inches; length, 12 feet. Lent by Miss Mary Custis Lee. Cat. No. 2082, U.S.N.M.

¹ On the occasion of the visit of Lafayette to the city of Baltimore in 1824, one of these tents was taken to that city by the owner, G. W. P. Custis, and having been set up was used by the members of the Society of the Cincinnati at a reception tendered Lafayette. See the *American and Commercial Daily Advertiser* of Baltimore for Sept. 13, 14, 16, and Oct. 9, 1824.

² It is probable that while in the field this small tent of very light material was set up within a marquee and used by the commander in chief as a sleeping compartment, and hence its name. See Lossing's *Mount Vernon and Its Associations*, p. 138.

(3) *Two door posts*.—Slender spruce poles with pointed ends for tent door. Length, 6 feet 6 inches; diameter, 2 inches. Lent by Miss Mary Custis Lee. Cat. No. 2082, U.S.N.M.

(4) *Twenty-three oak pegs*.—With notched heads and sharpened ends and varying in length from 9 inches to 20 inches. Lent by Miss Mary Custis Lee. Cat. No. 2087, U.S.N.M.

(5) *Three tent pouches*.—(1) Leather pouch lined with heavy brown canvas. Ends padded. Cylindrical in shape, with outside flaps secured with strings. Length, 3 feet 3½ inches; diameter, 18 inches. Lent by Miss Mary Custis Lee. Cat. No. 2086, U.S.N.M. (2) Canvas pouch for pegs. Rectangular in shape with holes along the edges for draw strings. Length, 26 inches; width, 21½ inches; height of sides, 5 inches. Lent by Miss Mary Custis Lee. Cat. No. 2085, U.S.N.M. (3) Section of tent pouch of canvas. Rectangular in shape with holes for draw strings on the edges. Length, 5 feet 2 inches; width, 4 feet 5 inches. Lent by Miss Mary Custis Lee. Cat. No. 2085, U.S.N.M.

Original manuscript company roll and muster of the guard of Washington when Commander in Chief of the Continental Army.—Muster, certified to on the inspection of July, 1782, by W. Barber, major and assistant inspector of the Northern Army, and the roll of the true state of the company, certified to September 7, 1782, by W. Colfax, lieutenant commandant. (See Appendix 2 for copy of this document.) Size, 12 by 20 inches. Gift of Capt. James M. Miller, U. S. Army. Plate 21. Cat. No. 97031, U.S.N.M.

Original diploma of membership of Dr. David Townsend, of Massachusetts, in the Society of the Cincinnati.—Dated May 5, 1784. Engraved on parchment and signed by "Geo. Washington, President," and "H. Knox, Secretary," of the society. Lent by Thomas Gerry Townsend.¹ Cat. No. 256887, U.S.N.M.

Camp mess chest.—Used by Washington during the War of the Revolution. Constructed of strips of oak and pine, the interior lined with heavy green woolen material and the exterior covered with dark leather. Edges studded with brass-headed tacks and the corners faced with strips of iron. Iron handle on either end and lid fitted with iron hinges, fastened with flat lock and with hasp and padlock. Interior divided into fourteen compartments and containing a tray with nine compartments. Height, 10¾ inches; width, 14 inches; length, 21¼ inches. Chest with outfit described below bequeathed to the Government in 1844 by William Sidney Winder.² Transferred from the U. S. Patent Office to the U. S. National Museum in 1883. Plate 22. Cat. No. 92599, U.S.N.M.

¹ The Museum collections also include 38 pieces of chinaware decorated with the monogram "D. T." and the insignia of the Society of the Cincinnati. These were imported from China for Doctor Townsend in 1790. Lent by Thomas Gerry Townsend. Cat. Nos. 256878-256884, U.S.N.M.

² See Congressional Globe, vol. 13, p. 536.

Outfit of mess chest.—(1) *Four cylindrical tin pots* with detachable wooden handles; two with tops, two without tops. The dimensions of these are as follows: (a) Height, $7\frac{3}{4}$ inches; diameter, $7\frac{3}{4}$ inches; length of handle, $7\frac{3}{4}$ inches. (b) Height, 7 inches; diameter, $6\frac{5}{8}$ inches; length of handle, $7\frac{3}{4}$ inches. (c) Height, $7\frac{1}{4}$ inches; diameter, 6 inches; length of handle, $7\frac{1}{2}$ inches. (d) Height, $7\frac{1}{2}$ inches; diameter, $4\frac{1}{2}$ inches; length of handle, $6\frac{1}{2}$ inches. Plate 22. Cat. Nos. 92622–25, U.S.N.M.

(2) *Six tin plates.* These vary in diameter from $9\frac{1}{2}$ to $8\frac{1}{2}$ inches. Cat. Nos. 92629–34, U.S.N.M.

(3) *Three tin platters.* Oval in shape and varying in size from $13\frac{1}{2}$ by $9\frac{1}{2}$ inches to $12\frac{7}{8}$ by $8\frac{7}{8}$ inches. Cat. Nos. 92626–28, U.S.N.M.

(4) *Two knives.* Steel blades with oak handles painted black. Length, $6\frac{1}{4}$ inches. Cat. Nos. 92615–16, U.S.N.M.

(5) *Four two-tined forks.* Handles of oak painted black. Length, $6\frac{1}{4}$ inches. Cat. Nos. 92617–20, U.S.N.M.

(6) *Gridiron* with collapsible legs and handle, and eight parallel bars. Size, $6\frac{1}{4}$ inches square; length of legs, $2\frac{7}{8}$ inches; length of handle, $5\frac{3}{8}$ inches. Cat. No. 92621, U.S.N.M.

(7) *Tinder box.* Rectangular, tin, with small square opening in top closed with a slide. Height, 3 inches; width $3\frac{3}{8}$ inches; length, $5\frac{3}{8}$ inches. Cat. No. 92600, U.S.N.M.

(8) *Tinder box.* Rectangular, tin, with hinged lid. Height, $2\frac{3}{4}$ inches; width, $5\frac{1}{4}$ inches; length, $5\frac{1}{2}$ inches. Cat. No. 92601, U.S.N.M.

(9) *Glass bottle, square shaped.* For salt, with pewter top. Base, $1\frac{1}{2}$ inches square; height, 3 inches. Cat. No. 92604, U.S.N.M.

(10) *Glass bottle, square shaped.* For pepper, with perforated pewter top. Base, $1\frac{1}{2}$ inches square; height, 3 inches. Cat. No. 92603, U.S.N.M.

(11)¹ *Three glass bottles.* Each square shaped, with small neck, fitted with cork stopper. Dimensions of each: Base, $1\frac{1}{2}$ inches square; height, 3 inches.

(12) *Glass bottle.* Rectangular in shape, with small neck, fitted with cork stopper. Base, $1\frac{1}{2}$ inches by 3 inches; height, $8\frac{1}{2}$ inches.

(13) *Two glass bottles.* Each rectangular in shape, with small neck, fitted with cork stopper. Dimensions of each: Base, $3\frac{3}{8}$ inches by $3\frac{5}{8}$ inches; height, $8\frac{1}{2}$ inches.

(14)¹ *Two glass bottles.* Each rectangular in shape, with small neck, fitted with cork stopper. Dimensions of each: Base, 3 inches by $4\frac{1}{2}$ inches; height, $5\frac{1}{2}$ inches.

(15) *Knitted green woolen bag.* Divided into seven interior compartments by longitudinal strips of cloth. A narrow strip of tape is

¹ The stoppers of the bottles described under headings 11–14 are each fitted with a brass ring attached to the top for convenience in handling.

fastened about the sides with ends for tying. Size, 9 by 7 inches. Cat. No. 92614, U.S.N.M.

Surveyor's compass.—Circular case of mahogany, bound with a narrow strip of iron. Horizontal bar and standards of brass. Compass face of highly polished metal marked with an eight-pointed star indicating the cardinal and intermediate points, and covered with glass top. Inscribed: "Rittenhouse, Philadelphia."¹ Used by Washington at Mount Vernon. Presented to the United States Government by Anthony Kimmel. Deposited in the U. S. Patent Office, and transferred to the U. S. National Museum in 1883. Diameter of compass, $6\frac{1}{2}$ inches; length of horizontal bar, 14 inches; height of standards, 6 inches. Plate 23, Cat. No. 92538, U.S.N.M.

Manuscript correspondence relating to compass.—Fourteen letters written in 1851 and 1852 by Anthony Kimmel, George Washington Parke Custis, and others, concerning the surveyor's compass described above. Bound together with a copy of the work by Henry T. Tuckerman, entitled "Character and Portraits of Washington," which was published by J. Putnam, New York, in 1850. Inscribed in gold letters on the cover, "The Correspondence relating to the Surveyor's Compass of Gen. George Washington." Dimensions, $11\frac{1}{2}$ by 9 by $1\frac{5}{8}$ inches. Transferred from the U. S. Patent Office in 1883 to the U. S. National Museum. Cat. No. 92542, U.S.N.M.

Spyglass.—Tube, nine-sided, wound closely with a single thickness of twine. Marked with the maker's name, "Cole, Fleet Street, London." Used by Washington at Mount Vernon largely for viewing boats on the Potomac. Diameter of object lens, $2\frac{3}{4}$ inches; diameter of eye lens, 1 inch; length, 63 inches. Lewis collection. Cat. No. 92423, U.S.N.M.

Field glass and case.—Brass tube, in three sections, with case of russet leather. Used by Washington during the War of the Revolution. Diameter of object lens, $1\frac{3}{4}$ inches; diameter of eye lens, $1\frac{1}{8}$ inches; length, closed, 9 inches; opened, $22\frac{1}{2}$ inches. Length of case, $9\frac{1}{2}$ inches; diameter, $2\frac{1}{2}$ inches. Lewis collection. Plate 24. Cat. Nos. 92424-25, U.S.N.M.

Portable writing case.—Rectangular mahogany box, the lid covered with black grained leather and lined with paper. Interior divided into five compartments for paper, pens, pencils, and sealing wax. Lid fitted with two brass hinges and a brass lock. To the side of the case is affixed a large folding pocket of black grained leather for stationery. Used by Washington during the War of the Revolution. Presented to the Government in 1845 by Dr. Richard Blackburn. Placed in the U. S. Patent Office, and in 1883 transferred to the U. S. National Museum. Dimensions: $14\frac{1}{4}$ by $14\frac{3}{4}$ by $3\frac{3}{4}$ inches. Plate 25. Cat. No. 92529, U.S.N.M.

¹ David Rittenhouse (1732-1796) was one of the most noted of American astronomers during the latter half of the 18th century and manufactured mathematical instruments of exceptional accuracy.

Shaving glass.—In rectangular wooden case with drawer, the interior and exterior covered with a decorative paper. Part of top lacking. Used by Washington during the War of the Revolution. Dimensions of case, $9\frac{1}{4}$ by $11\frac{1}{4}$ by $1\frac{5}{8}$ inches. Lewis collection. Cat. No. 92411, U.S.N.M.

MISCELLANEOUS RELICS.

Iron treasure chest.—Made of heavy sheets of wrought iron, the edges faced with wide strips of the same material, the whole joined by heavy bolts, lid fitted to the back with three heavy hinges and secured in front with one flat lock and two padlocks over iron hasps. Owned by Daniel Parke Custis, first husband of Martha Washington, and later used by General and Mrs. Washington at Mount Vernon as a receptacle for valuables. Bequeathed by Mrs. Washington to George Washington Parke Custis.¹ Dimensions, $20\frac{1}{2}$ by $12\frac{3}{4}$ by $11\frac{1}{2}$ inches. Lent by Miss Mary Custis Lee. Cat. No. 2090, U.S.N.M.

English keyed zither owned by Nellie Custis.—The body of the instrument is pear-shaped with sounding board of fir, and back, sides, and neck of maple. The sounding board is decorated about the edge with a painted circlet of green leaves. A circular hole in the sounding board is filled in with an ivory piece which has six small holes across the center and is decorated in open work with the initials "E. P. C." and with small designs. Fingerboard faced with ivory. Bridge of ivory. The instrument is fitted with 12 steel strings. On one side of the bridge is a keyboard with six keys which actuate six hammers, the heads of which rise through the top between the bridge and the neck and strike the underside of the strings. The mechanism of the keyboard is fitted in a drawer located within the body of the piece. Inscribed Longman & Broderip, London. Presented by Washington to Eleanor Parke Custis as a birthday gift. Length, entire, 28 inches; length of body, 16 inches; width, 12 inches; height, $3\frac{3}{4}$ inches. Lewis collection. Plate 26. Cat. No. 92408, U.S.N.M.

Zither case.—For the instrument described above. Made of pine wood and covered with russet leather decorated with floral designs in gold. The lid is fastened with a small, flat lock and the interior lined with bright yellow woolen cloth. Length, 31 inches; width, 13 inches; height, $6\frac{1}{4}$ inches. Lewis collection. Cat. No. 92409, U.S.N.M.

Mahogany music case.—Rectangular in shape. Divided longitudinally into nine compartments by narrow oak strips, the tops of which are carved in an elongated heart shape. Lid secured at the back by two small brass hinges and in front by flat brass lock. Used by Eleanor Parke Custis at Mount Vernon. Length, 23 inches;

¹ See copy of Mrs. Washington's will in Benson J. Lossing's *Mount Vernon and Its Associations*, p. 421.

width, 15 inches; height, 12 inches. Lewis collection. Cat. No. 92401, U.S.N.M.

Chinese tea chest.—Square box of wood with sliding lid. Decorated with Chinese landscape scenes in mother-of-pearl inlaid on a background of black lacquer. Dimensions: $12\frac{3}{4}$ by $12\frac{3}{4}$ by 13 inches. Lewis collection. Cat. No. 92406, U.S.N.M.

Chinese tea chest.—Rectangular box of wood covered with Chinese paper. Lid fastened with hooks and two brass hinges. Interior side of lid decorated in colors with humming birds and flowers. Exterior of either end decorated with floral designs within circles. Back, front, and top of lid bear Chinese scenes. Dimensions: 14 by 14 by 8 inches. Lewis collection. Cat. No. 92403, U.S.N.M.

Mahogany chest.—Rectangular in shape and made of heavy pieces of mahogany. The edges are reinforced with brass knees and the bottom is fitted with four casters. The interior is lined with green baize. Presented to Washington by his half brother, Lawrence, and used at Mount Vernon as a receptacle for silver plate. Dimensions, 23 by 36 by 26 inches. Lewis collection. Cat. No. 92407, U.S.N.M.

Gold medal commemorating the death of Washington.—The obverse bears the bust of Washington and the inscription: "He is in glory and the world in tears. G. W. Ob. D. 14, 1799." Inclosed in an oval brass frame. The reverse of the medal is covered by a miniature landscape painting on ivory, in the foreground of which stands a weeping female figure. Diameter of medal, 1 inch; diameter of frame, $2\frac{3}{4}$ inches. Lent by Seth Banister Robinson. Cat. No. 232450, U.S.N.M.

Dress sleeve.—Green velvet embroidered with gilt braid and silver and gilt spangles in a set pattern of flowers and leaves. Lined with cream-colored silk. From one of Mrs. Washington's costumes. Entire length, 13 inches; width of cuff, 8 inches; width of sleeve, 4 inches. Lewis collection. Cat. No. 92222, U.S.N.M.

Worsted lamp mat.—Knitted by Martha Washington and used on the library table at Mount Vernon. Circular in shape and composed of twenty blue, brown, and white sections. Diameter, 8 inches. Lewis collection. Cat. No. 92404, U.S.N.M.

Coach panel.—Door panel from coach used by Washington. Copper, decorated in brown with three cupids and wreaths of flowers, by the Italian artist, Cipriani. Presented to the National Institute by Mrs. Mary Dunlap, and transferred from the U. S. Patent Office, in 1883, to the U. S. National Museum. Oak frame, 15 by 17 inches; oval exposure of panel, $8\frac{3}{4}$ by $10\frac{1}{4}$ inches. Cat. No. 92537, U.S.N.M.

Invitation card.—Bears in black the inscription: "The President of the United States and Mrs. Washington request the pleasure of —— company to dine, on —— next, at —— o'clock, —— 179—. An answer is requested." Size, $4\frac{3}{4}$ by 3 inches. Gift of John M. Noah. Cat. No. 96955, U.S.N.M.

APPENDIX 1.

Extract from a letter from Ellis Spear, U. S. Commissioner of Patents, May 6, 1878, to the Honorable Carl Schurz, Secretary of the Interior, concerning the Lewis collection of Washington relics:

"In compliance with your order, I have carefully examined these relics and submit the following report:

"The relics consist of a large number of articles chiefly of personal and household use.

"The following inventory was made by the family and has been carefully verified by me.

"One large mirror; two small mirrors.

"One dozen handsome parlor chairs.

"Two armchairs.

"One large easy chair in which the general sat a few minutes before his death.

"One double brass candlestick by which the farewell address was written.

"Two silver-plated candlesticks.

"One large and two small plated waiters.

"One field glass used in the Revolution.

"One spyglass also used in the war.

"Knives and forks.

"One plated cake basket.

"One large mahogany box in which silver plate was kept.

"Two mahogany footstools and three carpet-covered footstools.

"The robe in which he was christened.

"Three silver-plated lamps.

"Half dozen silver-plated salt cellars.

"Thirty-six pieces of chinaware.

"One bedstead presented to Mr. Lawrence Washington by his friend, Admiral Vernon, and by Lawrence left to his brother, the general.

"One marble-top table 4 feet in length by 3 feet in breadth.

"One guitar presented by General and Mrs. Washington to Miss Nellie Custis.

"Miniature portraits of General and Mrs. Washington on wood, painted by Trumbull.

"One shaving glass in frame with drawer.

"An engraving of the Countess of Huntingdon presented by her to General Washington.

"Several souvenirs of Washington, consisting of ornamental works and household articles.

"All of these relics have been continuously in the possession of the Lewis family since the death of General Washington. They were received by Mrs. Lewis, who was the adopted daughter of General Washington and the wife of Major Lawrence Lewis, his nephew, and were in her possession until her death in 1852, when they passed into the hands of the family now having them in charge. They are all in an excellent state of preservation, and of the genuineness of every article there can be no doubt whatever.

"The miniature portraits were considered excellent likenesses and are now in good condition.

"The articles of household use are all in their original condition and illustrate the style of living of the first President of the United States. The whole collection is far superior to that now in the possession of the Government.

"The total number of articles enumerated is more than ninety, and, added to those now in the possession of the Government, they would form, I think, by far the largest and best collection of relics of Washington that could now be made.

"The family were reluctant to part with these relics, but were impelled by the consideration that inevitably in a few years with the separation of the family the

articles would be scattered, and perhaps a large number of them in the course of time lost or destroyed. They felt also that every citizen of the country who shared with them an interest in Washington would be glad to have these relics made public property and placed where they would be accessible to all.

"The small collection now in the possession of the Government is visited by thousands of people every year.

"The addition thereto of the articles now offered would constitute a most complete and interesting collection and would insure the preservation of these valuable relics."

APPENDIX 2.

ROLL AND MUSTER OF THE COMMANDER IN CHIEF'S GUARD FOR THE MONTH OF JULY, 1782.

Ranks.	Names.	Term of enlistment.	Casualties.
Lieutenant.....	William Colfax.....		On command after deserters, 22 July.
Lieutenant.....	Levi Holden.....		
Sergeants.....	William Hunter.....		
	James Frazer.....		
	John Phillips.....		
	Davis Brown.....		
Corporals.....	John Arnold.....		
	Samuel Wortman.....		
	John Dent.....		
	John Herriek.....		
Drums and fifes....	Jared Goodrich.....		
	Isaac Manning.....		
	Frederick Park.....		
	Diah Manning, drum major.....		
	Cornelius Willson.....		
	John Fenton.....		
Privates 1.....	Jonathan Moore.....		
2.....	Timothy Smith.....		
3.....	Samuel Baily.....		
4.....	John Cole.....		
5.....	Elihu Hancock.....		
6.....	Ruben Thompson.....		
7.....	John Patton.....		
8.....	Peter Holt.....		
9.....	Edward Weed.....		
10.....	Benjamin Bonnel.....		
11.....	Thomas Forrest.....		
12.....	Jeremiah Driskill.....		
13.....	Joseph Vinal.....		
14.....	Robert Findley.....		
15.....	Thomas Gillen.....		
16.....	John Robertson.....		
17.....	William Karnahin.....		
18.....	John Doucher.....		
19.....	Hugh Cull.....		
20.....	Reaps Mitchell.....		
21.....	Randolph Smith.....		
22.....	Daniel Hymer.....		
23.....	Ebenezer Carleton.....		
24.....	Benjamin Eaton.....		
25.....	James Dougherty.....		
26.....	Joel Crosby.....		
27.....	James Hughes.....		
28.....	Lewis Flemister.....		
29.....	Lewis Campbell.....		
30.....	Jacob Seriver.....		
31.....	Jedediah Brown.....		
32.....	William Pace.....		
33.....	Dennis Moriarty.....		
34.....	Stephen Hatfield.....		
35.....	Simeon Lothrop.....		
36.....	William Martin.....		
37.....	John Montgomery.....		
38.....	John Finch.....		
39.....	Labon Landon.....		
40.....	Samuel Smith.....		
41.....	Joseph Timberlake.....		
42.....	William Tanner.....		
43.....	Edward Wiley.....		
44.....	Solomon Daley.....		
45.....	Enoch Wells.....		
46.....	William Coram.....		
47.....	Robert Blair.....		
48.....	William Henussey.....		
49.....	Levi Deane.....		
50.....	James Dady.....		
51.....	John Barton.....		
	John Paddington.....		

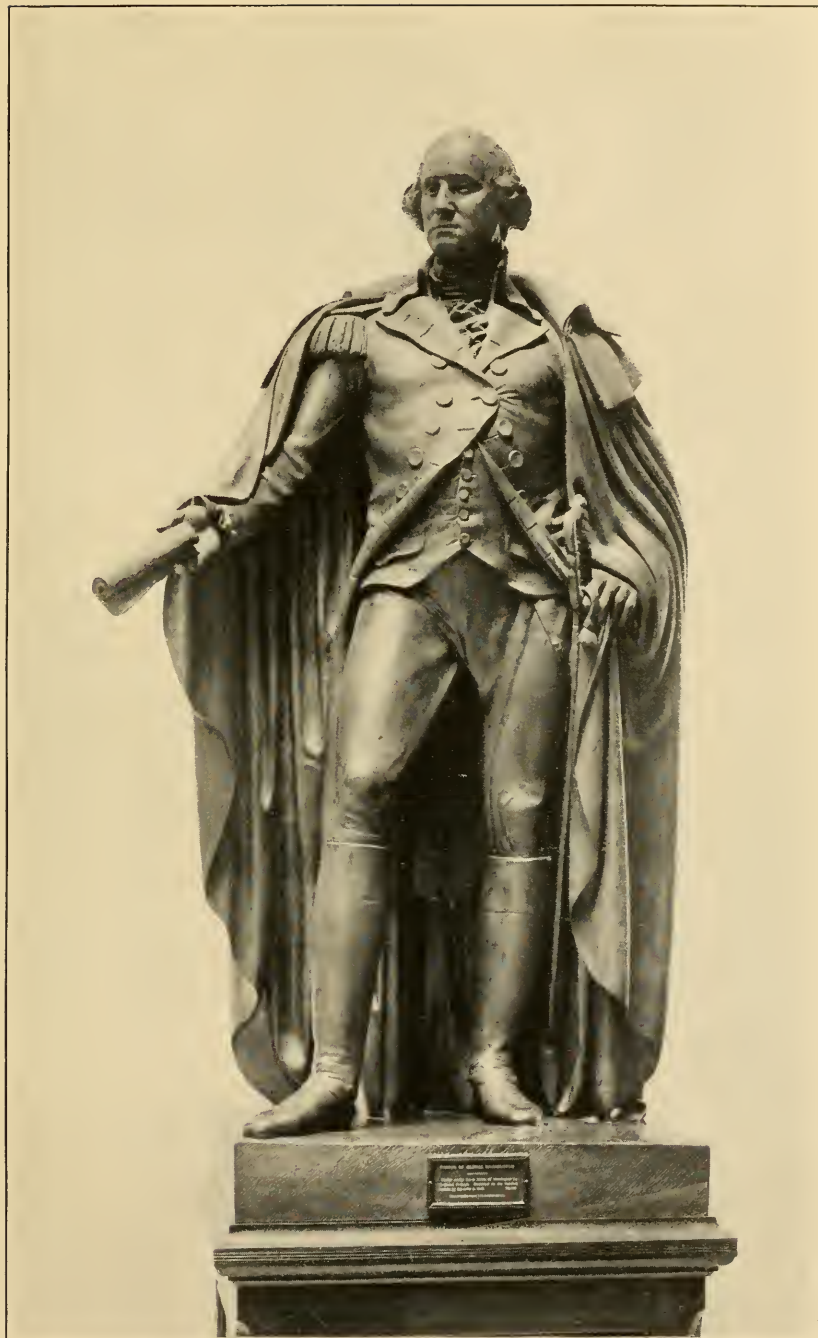
I certify the above roll to be the true state of said company seventh day of September, 1782.

W. COLFAX, *Lieut. Comdr. in Chief's Guard.*

Ranks.	Mustered.	Time since last muster or enlistment.	Alterations since last muster.
Lieutenant.....	William Colfax.....	June 30.....	
Do.....	Levi Holden.....	do.....	
Sergeants.....	William Hunter.....	do.....	
	John Phillips.....	do.....	
	Davis Brown.....	do.....	
Corporals.....	John Arnold.....	do.....	
	Samuel Wortman.....	do.....	
	John Dent.....	do.....	
Drums and fifes....	John Herrick.....	do.....	
	Jared Goodrich.....	do.....	
	Isaac Manning.....	do.....	
	Frederick Park.....	do.....	
	Diah Manning.....	do.....	
	Cornelius Willson.....	do.....	
Privates 1.....	John Fenton.....	do.....	
2.....	Jonathan Moore.....	do.....	
3.....	Timothy Smith.....	do.....	
4.....	Samuel Baily.....	do.....	
5.....	John Cole.....	do.....	
6.....	Elihu Hancock.....	do.....	
7.....	Ruben Thompson.....	do.....	
8.....	John Patton.....	do.....	
9.....	Peter Holt.....	do.....	
10.....	Edward Weed.....	do.....	
11.....	Benjamin Bonnel.....	do.....	
12.....	Thomas Forrest.....	do.....	
13.....	Jeremiah Driskill.....	do.....	
14.....	Joseph Vinall.....	do.....	
15.....	Robert Findley.....	do.....	
16.....	Thomas Gillen.....	do.....	
17.....	John Robertson.....	do.....	
18.....	William Karnahin.....	do.....	
19.....	John Doucher.....	do.....	
20.....	Hugh Cull.....	do.....	
21.....	Reaps Mitchell.....	do.....	
22.....	Randolph Smith.....	do.....	
23.....	Daniel Hymer.....	do.....	
24.....	Ebenezer Carleton.....	do.....	
25.....	Benjamin Eaton.....	do.....	
26.....	James Dougherty.....	do.....	
27.....	Joel Crosby.....	do.....	
28.....	James Hughes.....	do.....	
29.....	Lewis Fleimister.....	do.....	
30.....	Lewis Campbell.....	do.....	
31.....	Jacob Scriver.....	do.....	
32.....	Jedediah Brown.....	do.....	
33.....	William Pace.....	do.....	
34.....	Dennis Moriarty.....	do.....	
35.....	Stephen Hatfield.....	do.....	
36.....	Simon Lothrop.....	do.....	
37.....	William Martin.....	do.....	
38.....	John Montgomery.....	do.....	
39.....	John Finch.....	do.....	
40.....	Labon Landon.....	do.....	
41.....	Joseph Timberlake.....	do.....	
42.....	William Tanner.....	do.....	
43.....	Edward Wiley.....	do.....	
44.....	do.....	
45.....	Enoch Wells.....	do.....	
46.....	do.....	
47.....	Robert Blair.....	do.....	
48.....	do.....	
49.....	Levi Deane.....	do.....	
50.....	James Dady.....	do.....	
	John Barton.....	do.....	
	John Paddington.....	do.....	
			Deserted July 13.

I certify the above muster to be true in all its contents, inspection of July, 1782.

W. BARBER,
Major and Assistant Inspector of the Northern Army.



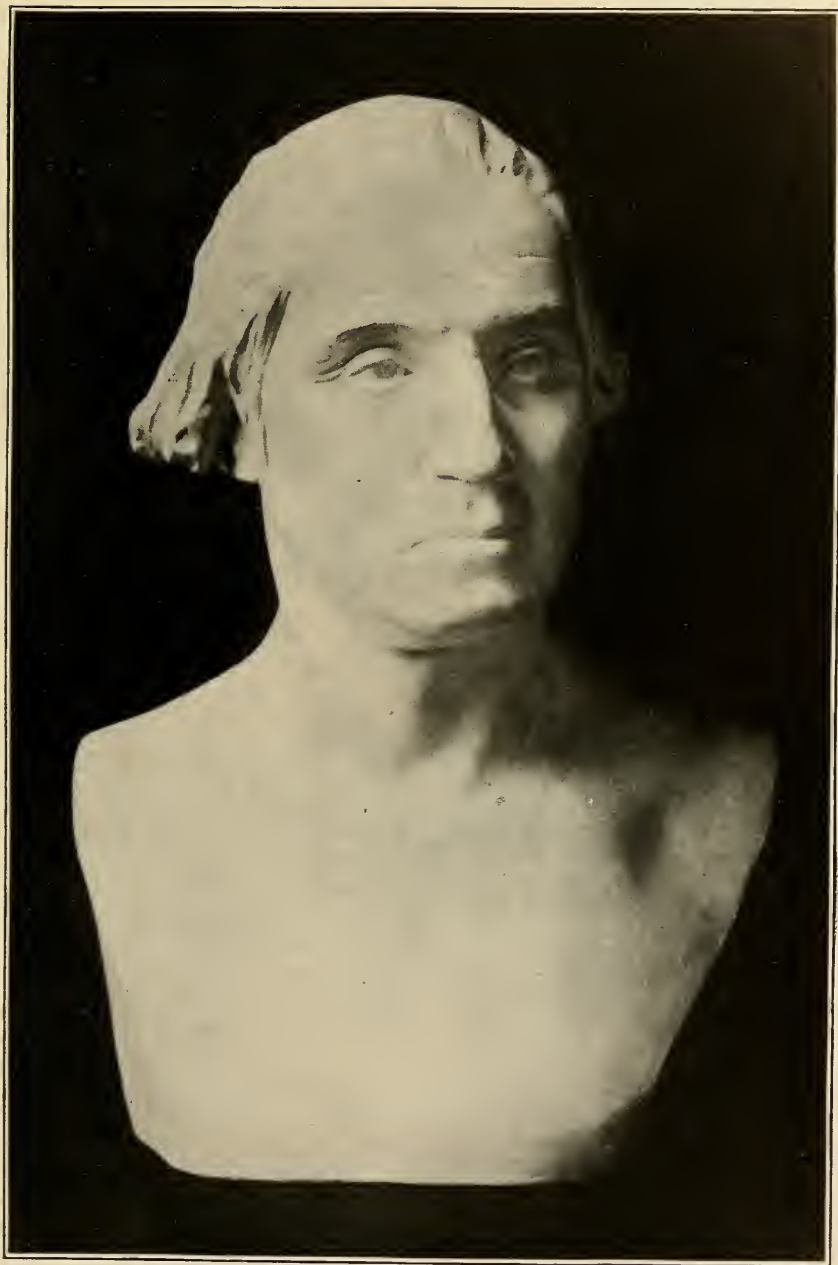
PLASTER STATUE OF WASHINGTON BY FERDINAND PETTRICH.

FOR EXPLANATION OF PLATE SEE PAGE 3.



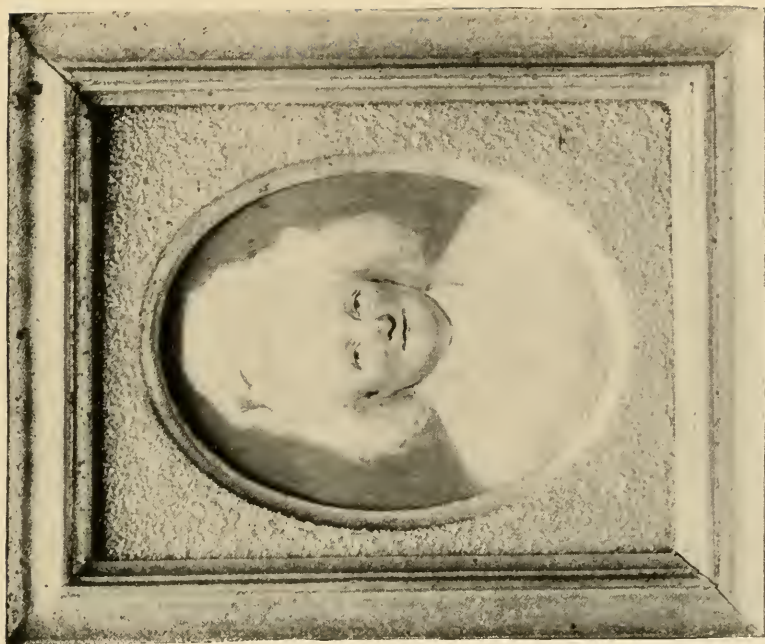
PLASTER STATUE OF WASHINGTON BY WILLIAM R. O'DONOVAN.

FOR EXPLANATION OF PLATE SEE PAGE 3.



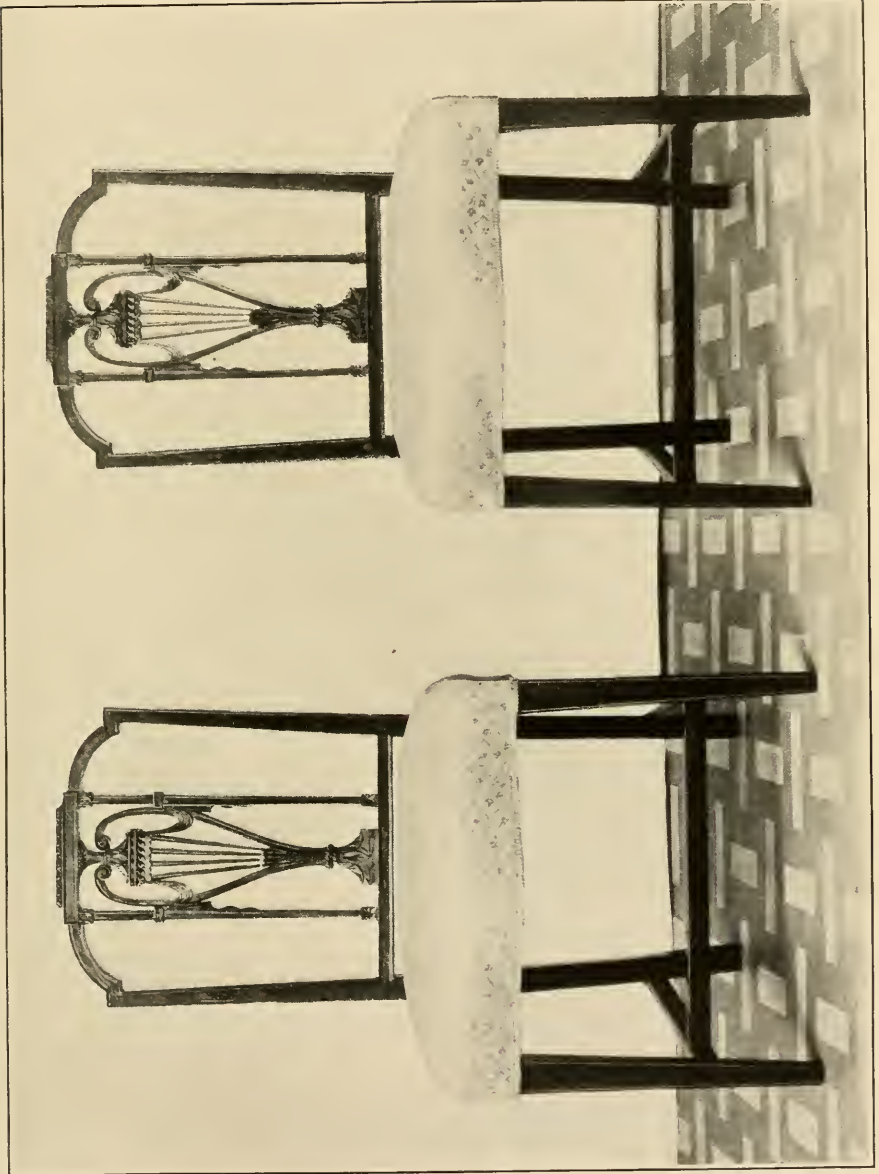
PLASTER COPY BY CLARK MILLS OF HOUDON'S BUST OF WASHINGTON.

FOR EXPLANATION OF PLATE SEE PAGE 3.



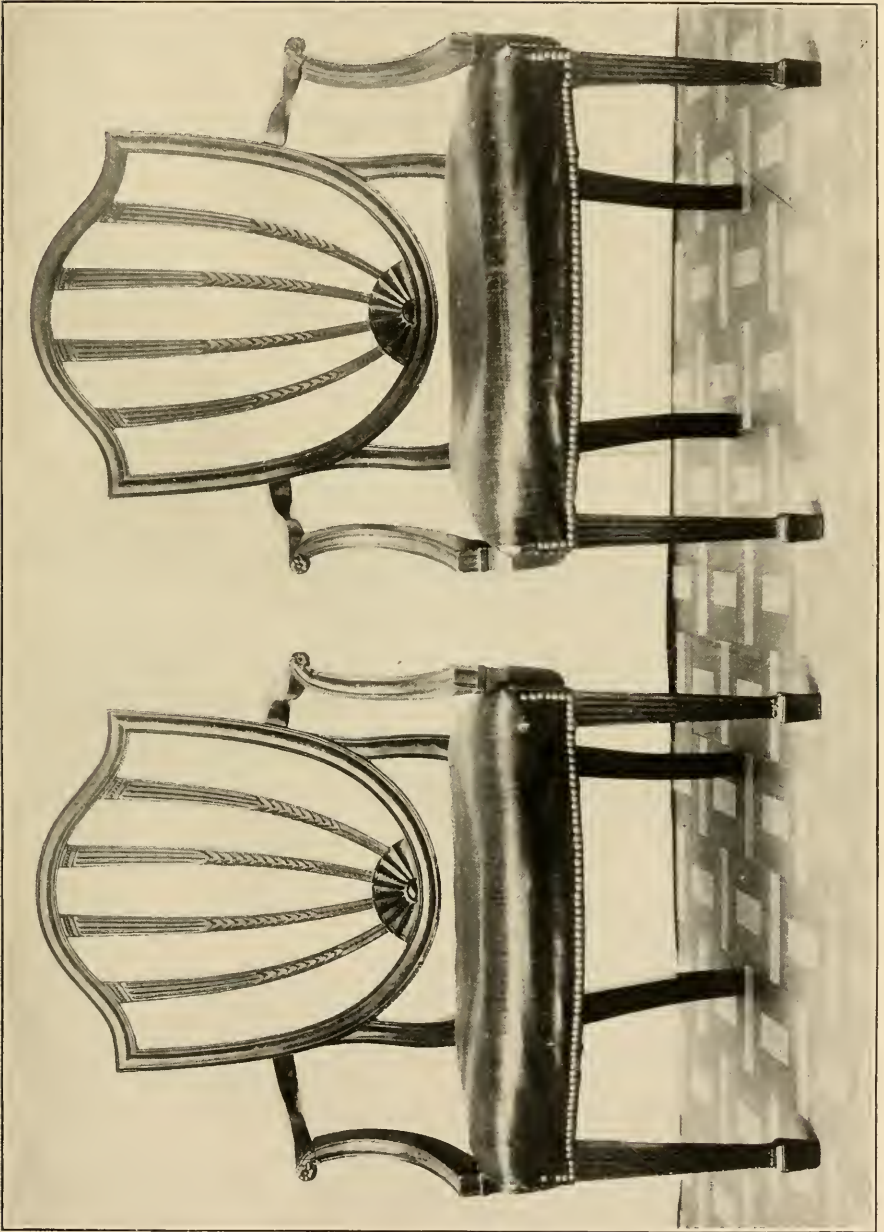
MINIATURE PORTRAITS OF GENERAL AND MRS. WASHINGTON BY JOHN TRUMBULL.

FOR EXPLANATION OF PLATE SEE PAGE 3.



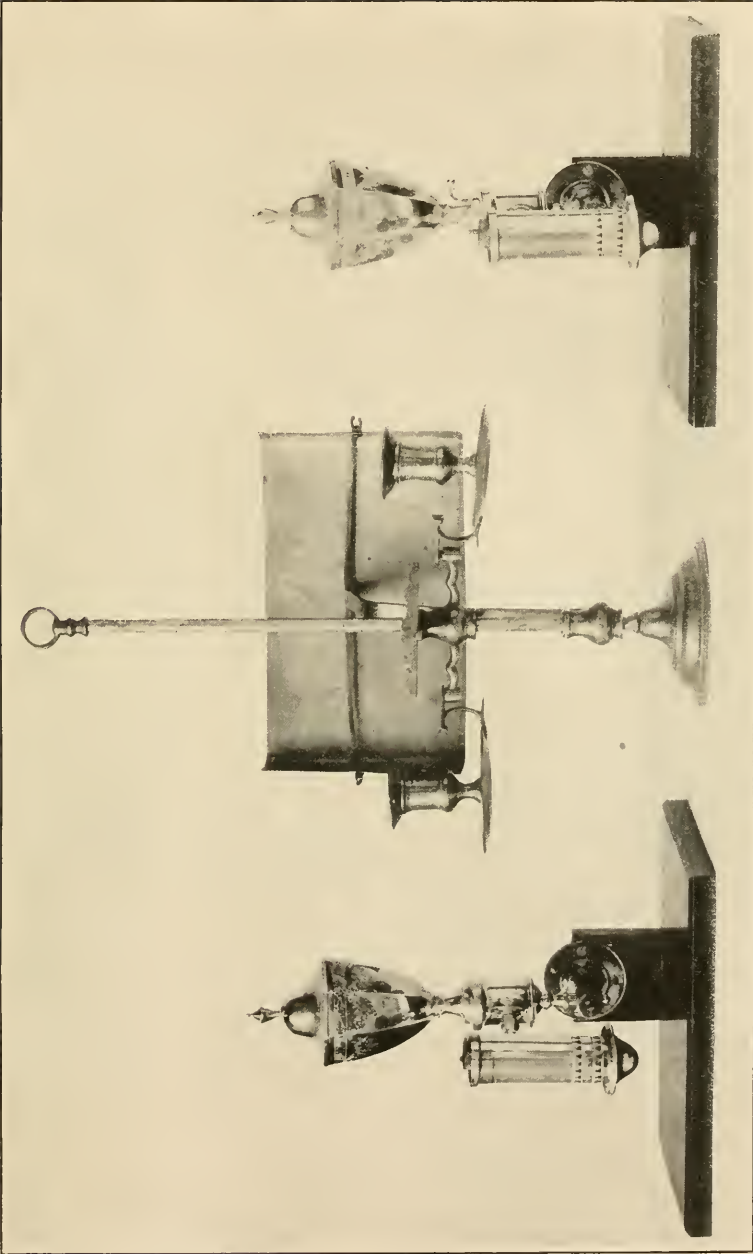
BLACK WALNUT CHAIRS.

FOR EXPLANATION OF PLATE SEE PAGE 4.



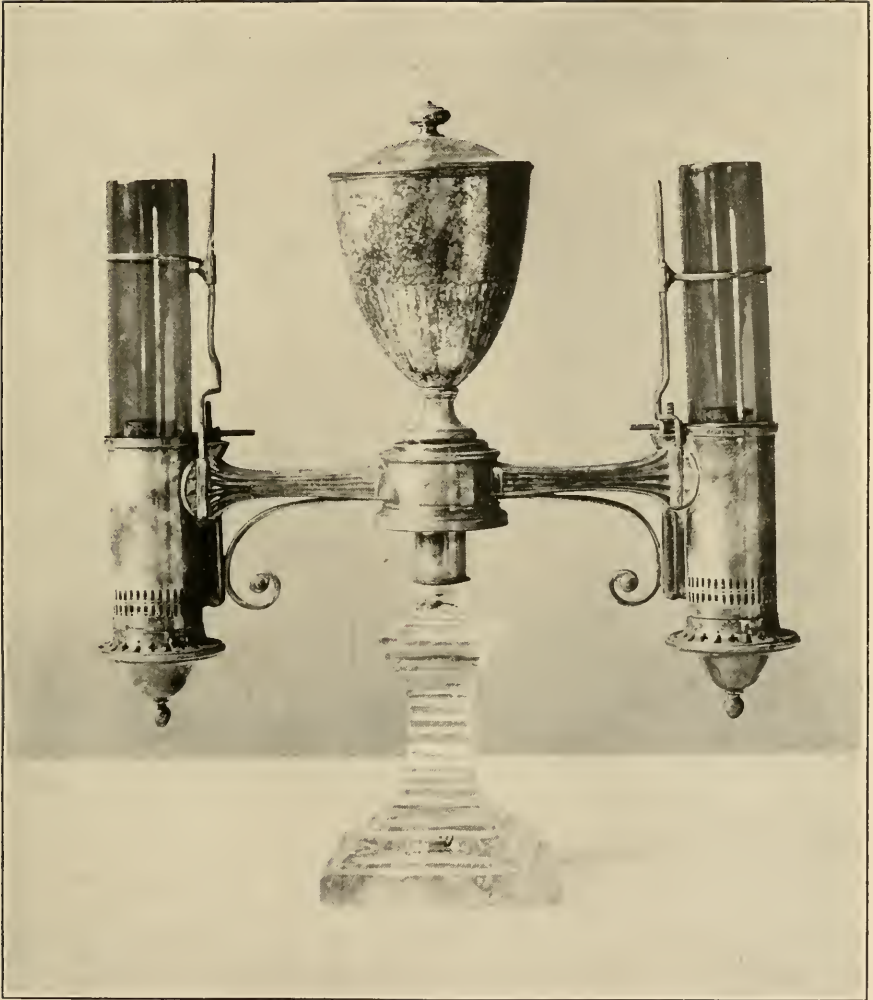
MAHOGANY ARMCHAIRS.

FOR EXPLANATION OF PLATE SEE PAGE 5.



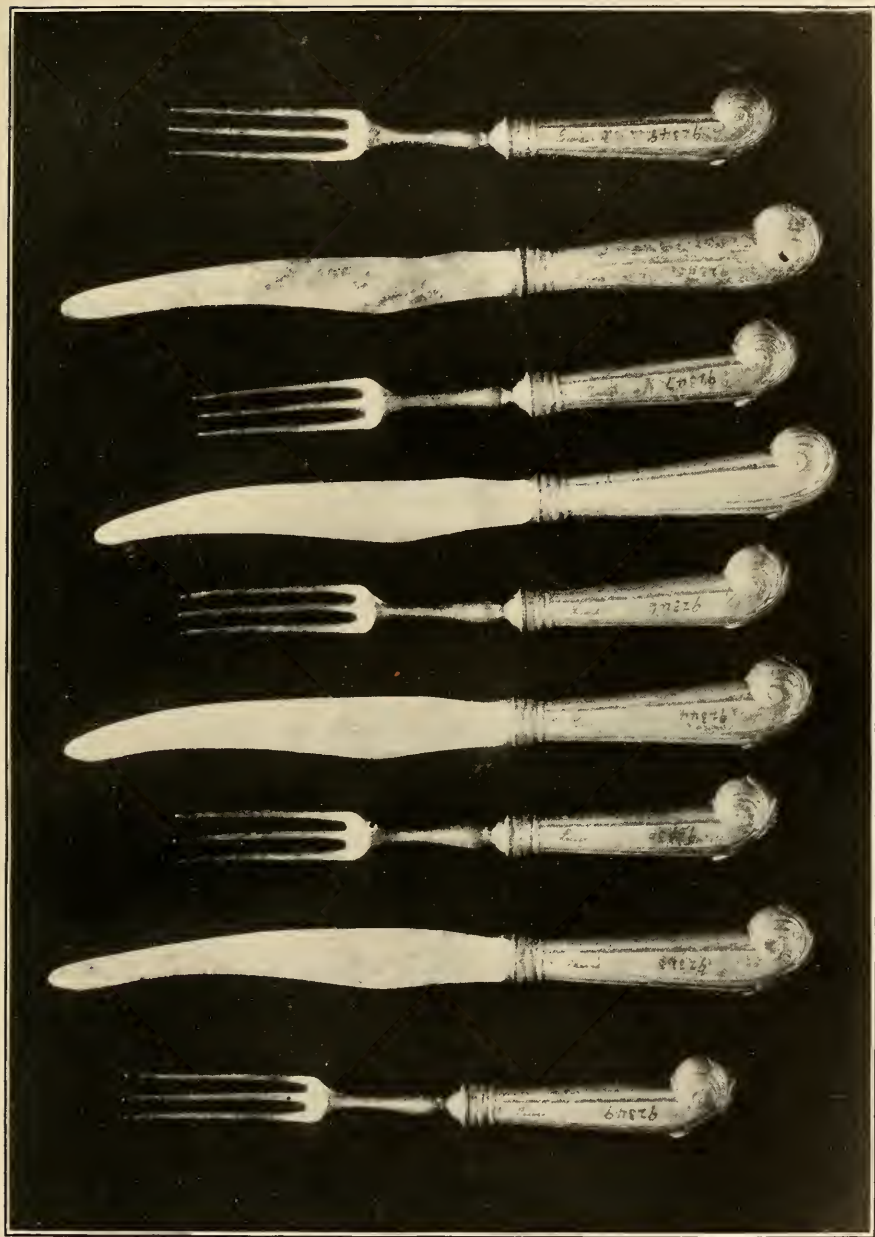
SILVER-PLATED WALL-BRACKET LAMPS AND BRASS CANDELABRUM.

FOR EXPLANATION OF PLATE SEE PAGE 7.



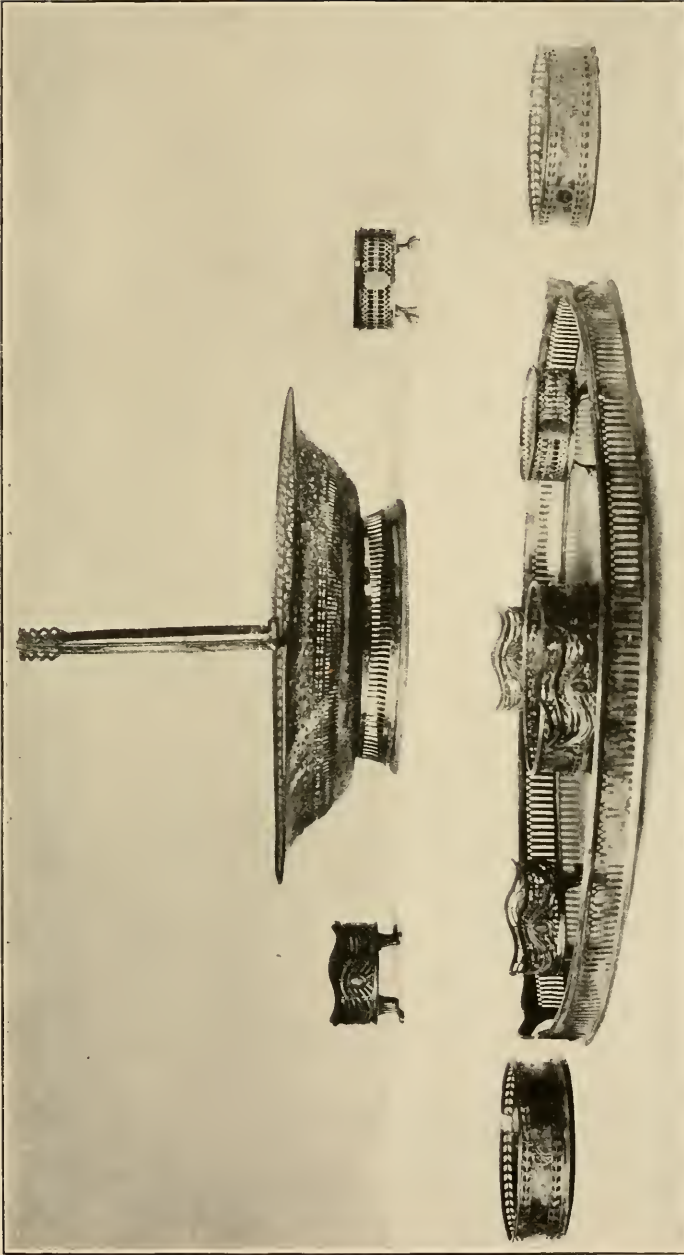
SILVER-PLATED DOUBLE LAMP.

FOR EXPLANATION OF PLATE SEE PAGE 7.



SILVER-PLATED KNIVES AND FORKS.

FOR EXPLANATION OF PLATE SEE PAGE 8.



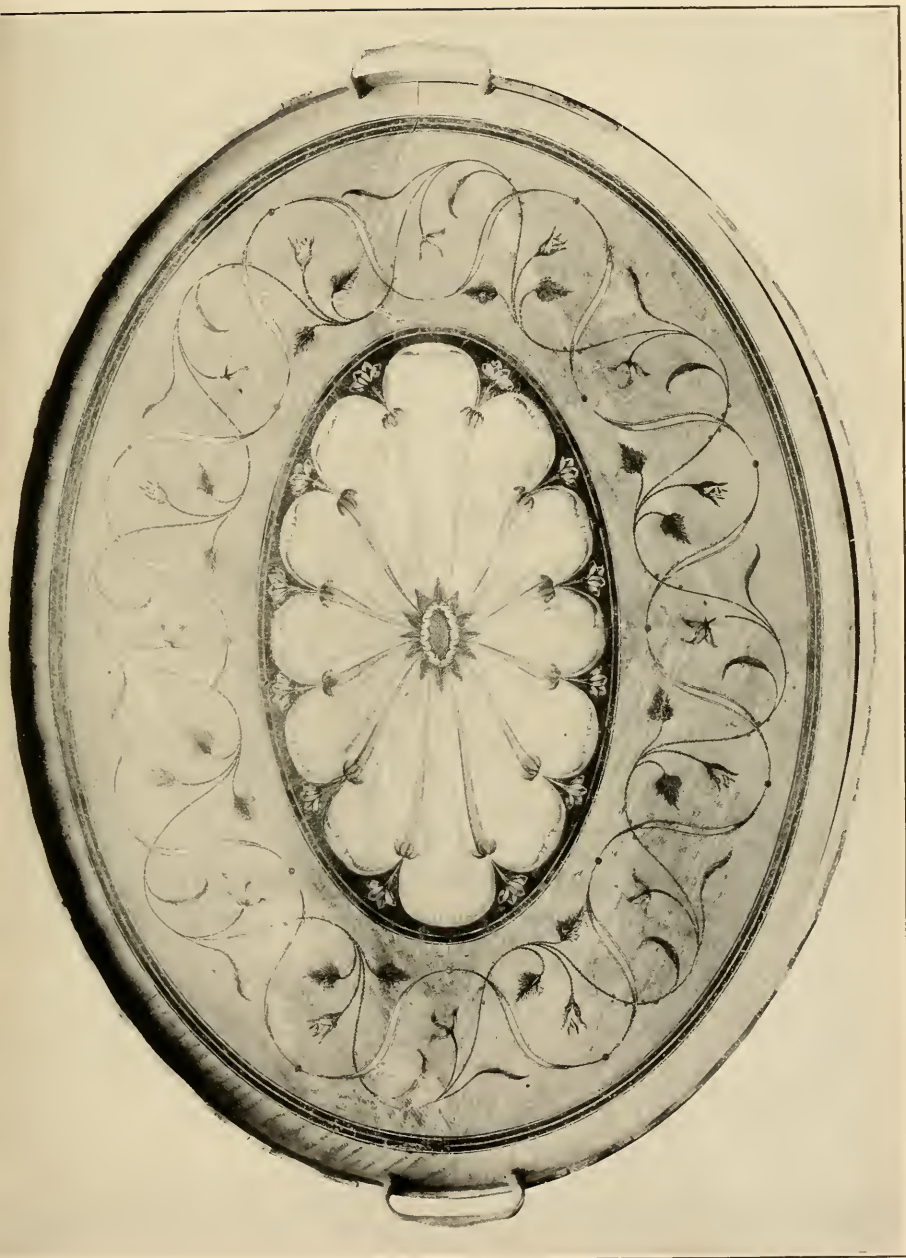
SILVER-PLATED TRAY, TABLE COASTERS, SALT CELLARS, AND CAKE BASKET.

FOR EXPLANATION OF PLATE SEE PAGE 8.



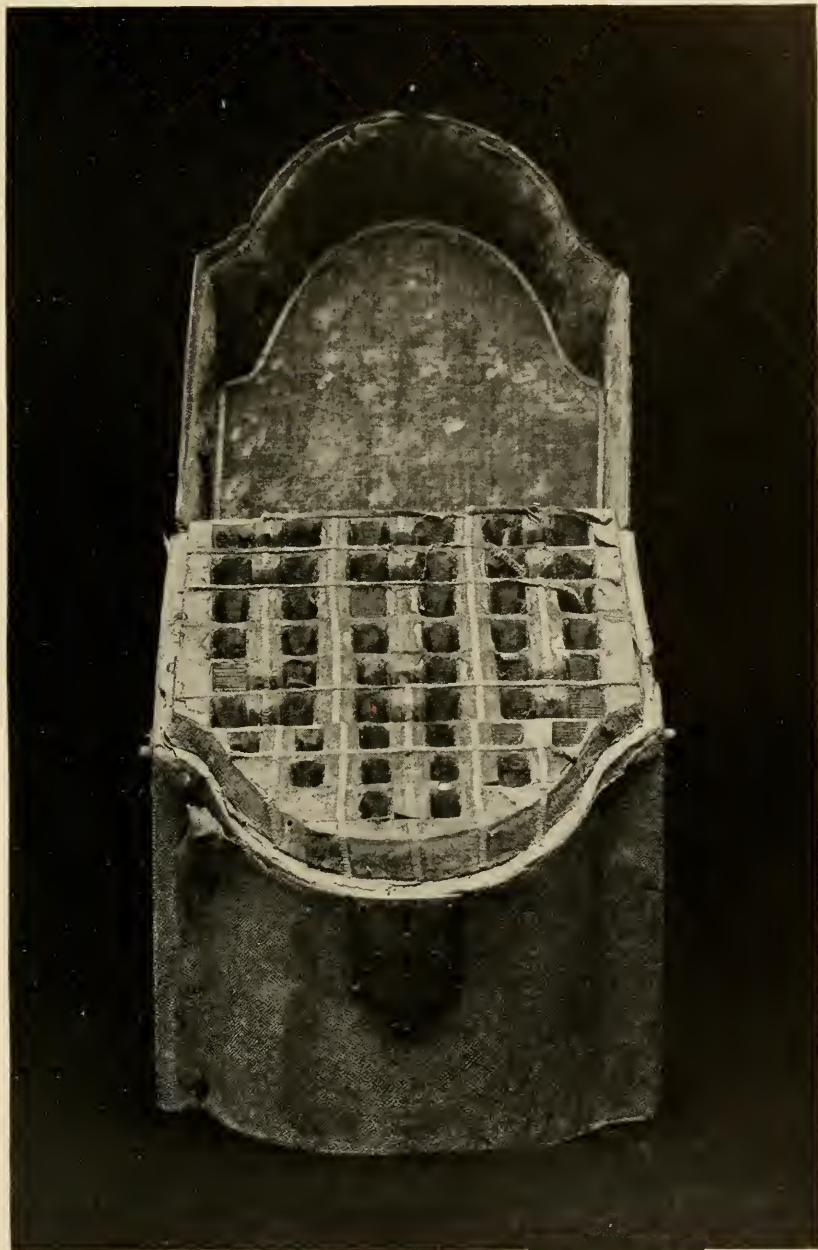
SILVER-PLATED TRAYS.

FOR EXPLANATION OF PLATE SEE PAGE 8.



WOODEN TEA TRAY.

FOR EXPLANATION OF PLATE SEE PAGE 9.



CUTLERY CASE.

FOR EXPLANATION OF PLATE SEE PAGE 9.



CANTON CHINA PLATTERS.

FOR EXPLANATION OF PLATE SEE PAGE 10.



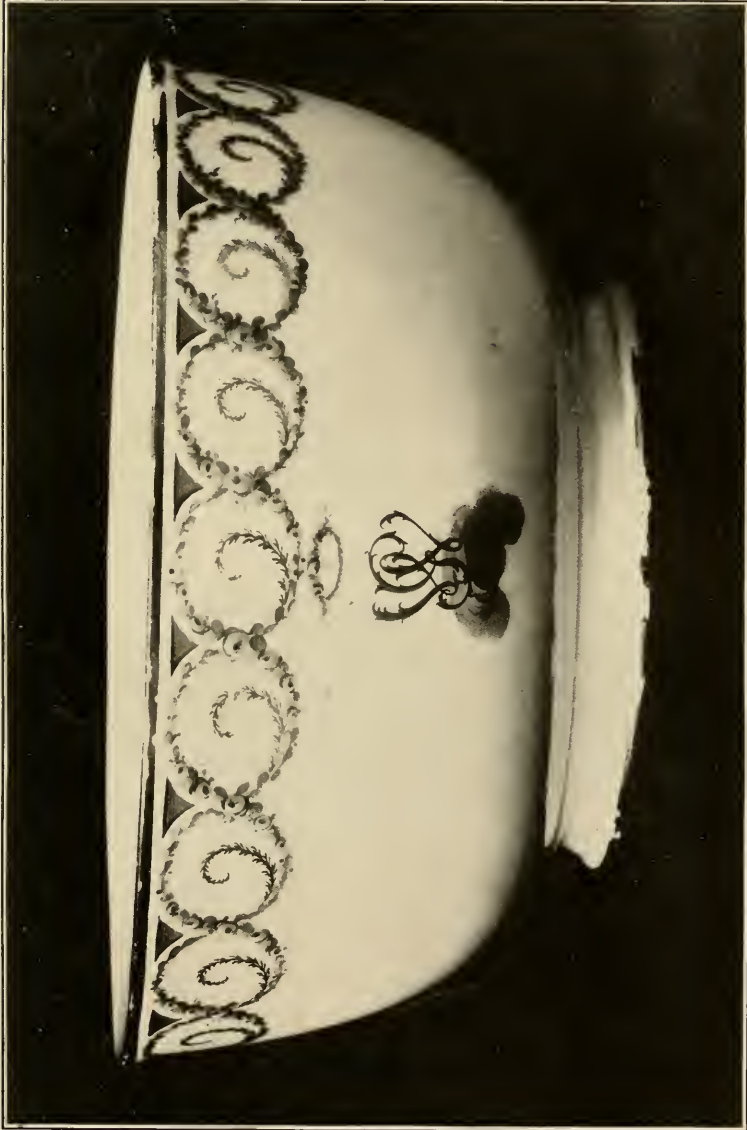
CANTON CHINA BOWLS AND WATER BOTTLE.

FOR EXPLANATION OF PLATE SEE PAGE 10.



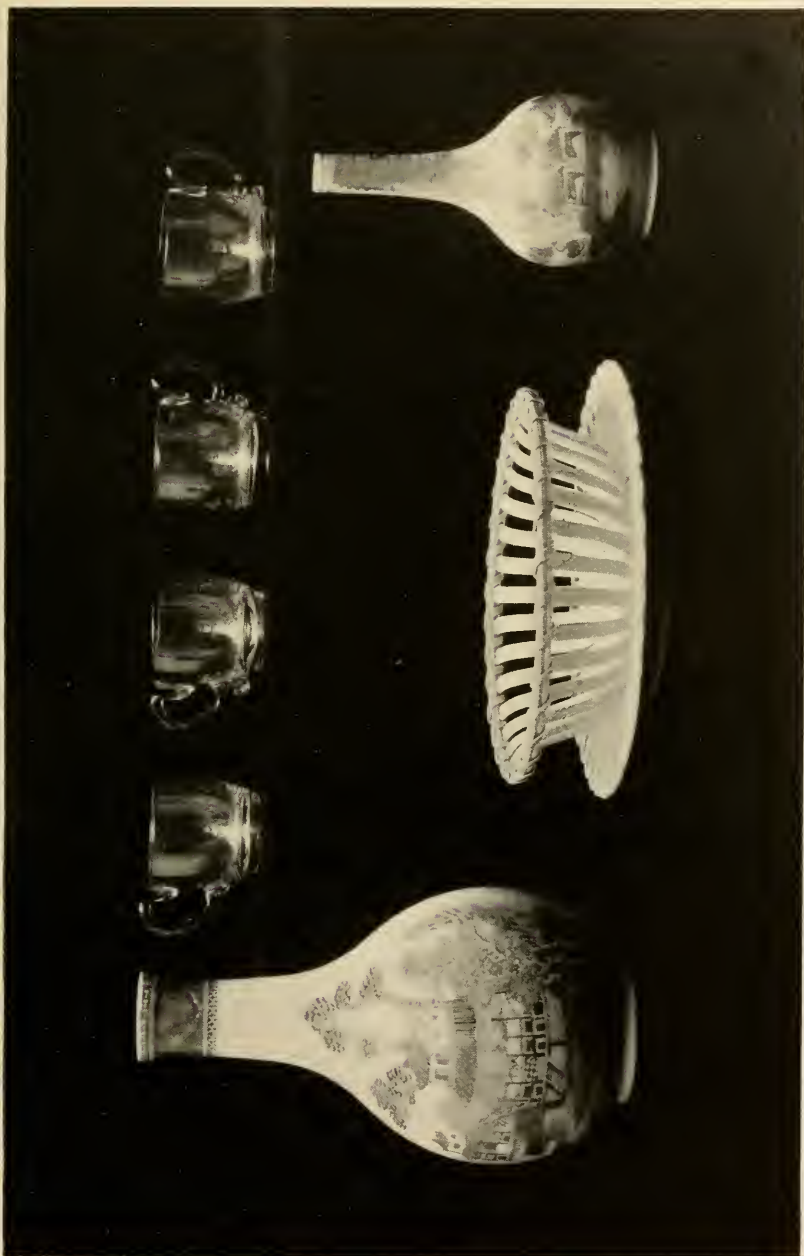
CHINESE VASES.

FOR EXPLANATION OF PLATE SEE PAGE 11.



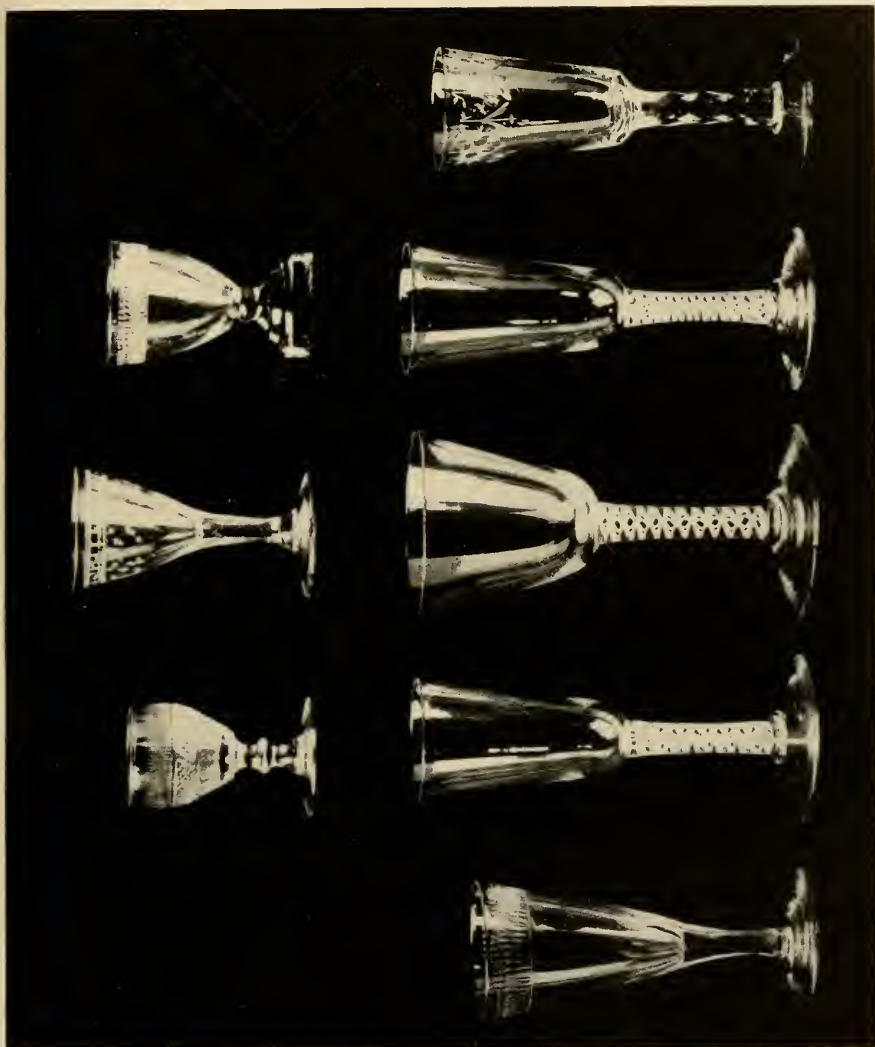
CHINA BOWL.

FOR EXPLANATION OF PLATE SEE PAGE 11.



CHINA AND GLASSWARE.

FOR EXPLANATION OF PLATE SEE PAGES 10 AND 11.



OLD ENGLISH DRINKING GLASSES.

FOR EXPLANATION OF PLATE SEE PAGE 14.

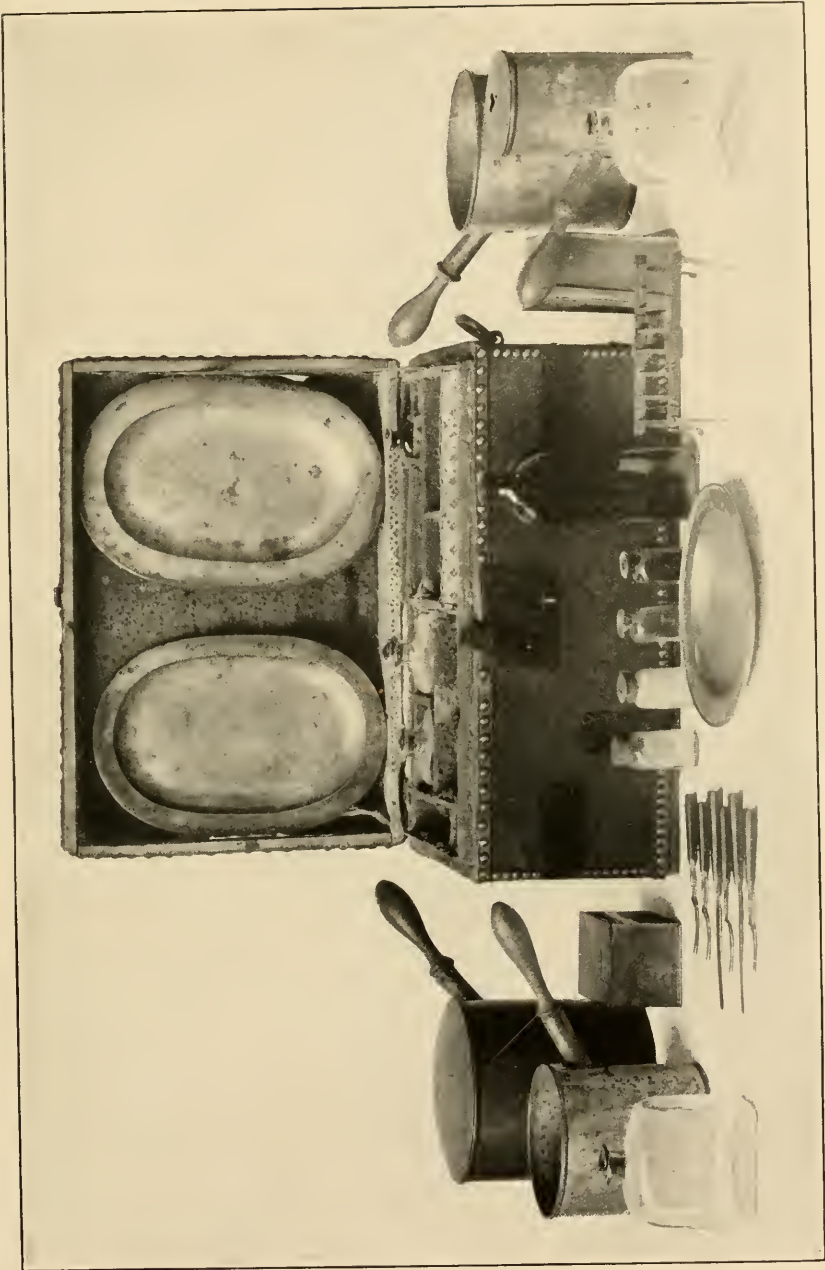


CONTINENTAL ARMY UNIFORM.

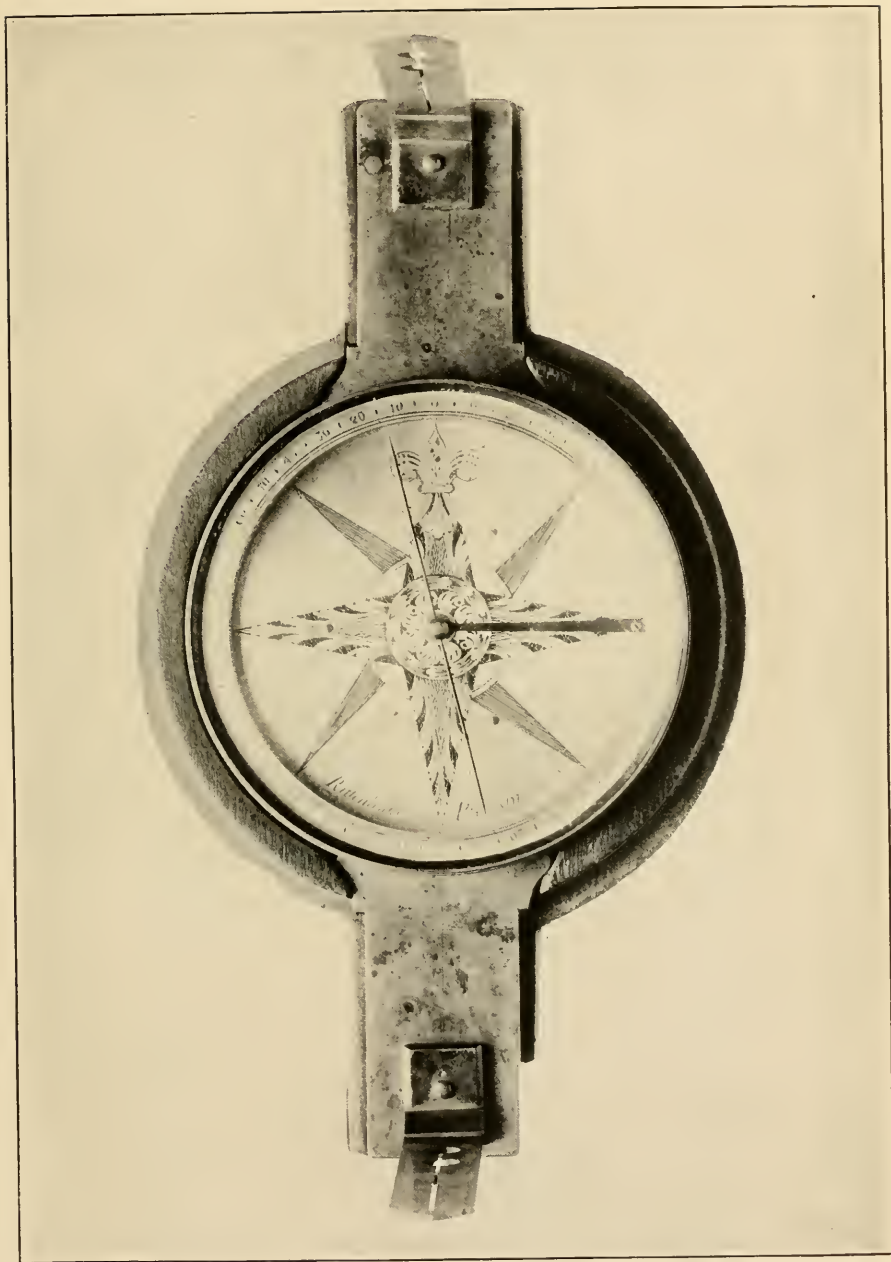
FOR EXPLANATION OF PLATE SEE PAGE 14.

Roll and Muster of the Commanders and Chiefs of Squad of the 1st Regiment of Artillery, July 1782.						
Ranks.	Names.	Terms of Intervals.	Cafities.	Musterd.	Time since last Muster, in Intervals.	Alteration since Muster.
1	William C. ...			William C.	
2	John ...			John	
3	
4	
5	
6	
7	
8	
9	
10	
11	
12	
13	
14	
15	
16	
17	
18	
19	
20	
21	
22	
23	
24	
25	
26	
27	
28	
29	
30	
31	
32	
33	
34	
35	
36	
37	
38	
39	
40	
41	
42	
43	
44	
45	
46	
47	
48	
49	
50	
51	
<p>I Certify the above Roll to be the true State of said Company</p> <p>Day of September 1782</p> <p>William C. ...</p>				<p>I Certify the above Muster to be true in all its Contents.</p> <p>Inspection of ... 1782</p> <p>Inspector of ... Army.</p>		

ROLL AND MUSTER OF WASHINGTON'S GUARD, 1782.
 FOR EXPLANATION OF PLATE SEE PAGE 16.

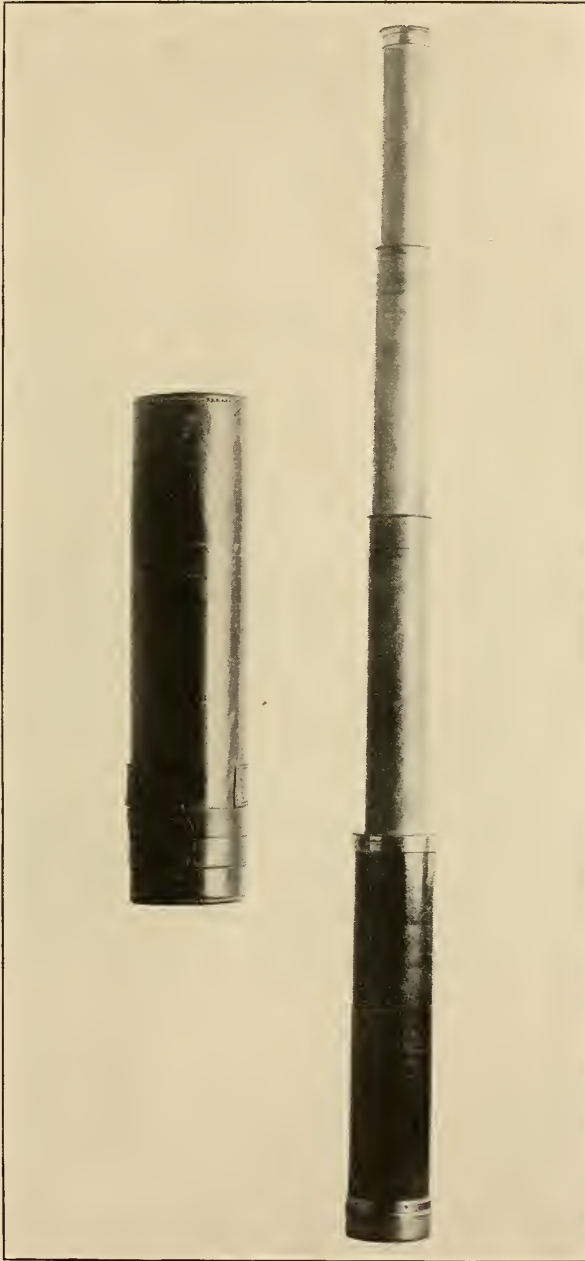


CAMP MESS CHEST AND CONTENTS.
FOR EXPLANATION OF PLATE SEE PAGES 16, 17.



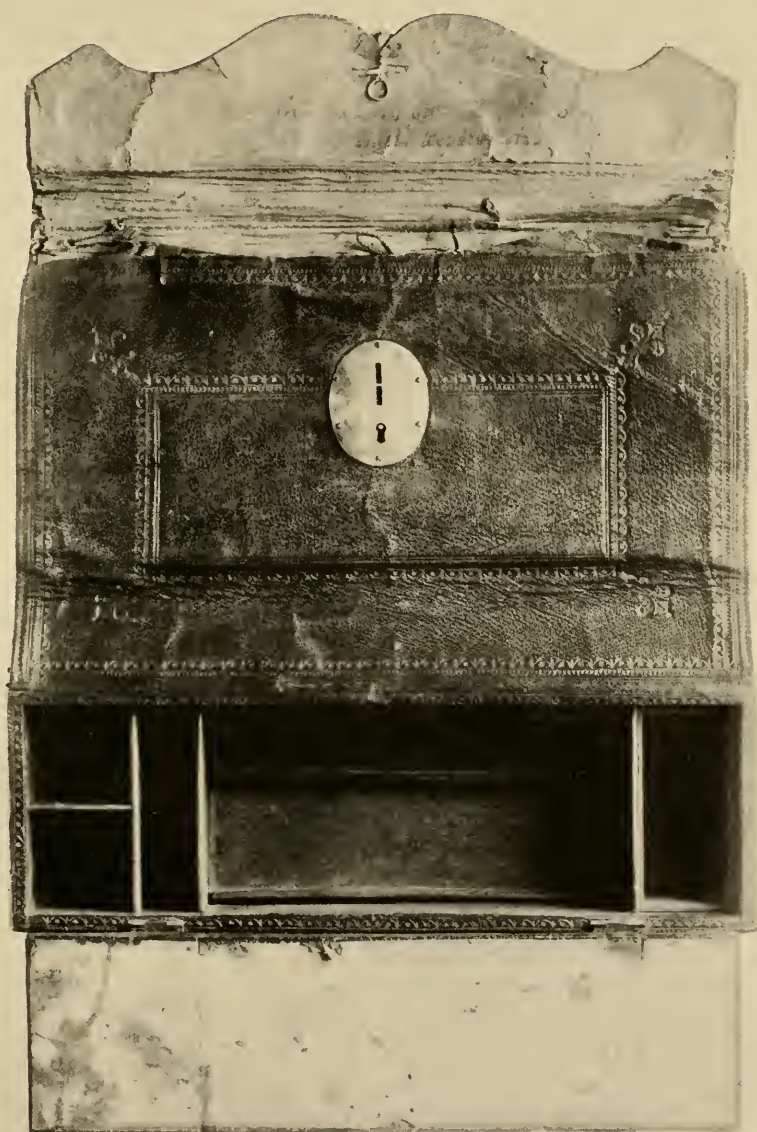
SURVEYOR'S COMPASS.

FOR EXPLANATION OF PLATE SEE PAGE 18.



FIELD GLASS AND CASE.

FOR EXPLANATION OF PLATE SEE PAGE 18.



PORTABLE WRITING CASE.

FOR EXPLANATION OF PLATE SEE PAGE 18.



ENGLISH KEYED ZITHER PRESENTED BY WASHINGTON TO "NELLY" CUSTIS.

FOR EXPLANATION OF PLATE SEE PAGE 19.



FURNITURE OWNED BY WASHINGTON AT MOUNT VERNON.

FOR EXPLANATION OF PLATE SEE PAGES 4-6.

