

DESCRIPTION OF A NEW GENUS OF PHYLLOSTOME BATS.

BY
HARRISON ALLEN, M. D.

Mr. Frederick W. True, curator of the department of mammals, National Museum, has placed in my hands a skin in spirits of a small leaf-nose bat, believed to be from the vicinity of the Segovia River, Eastern Honduras. The specimen had been eviscerated and the skull removed. The lower lip was badly mutilated. From the characters furnished by the nose-leaf and the peculiar coloration of the fur, I believe the form to be a new genus allied to *Stenoderma*, and describe it as follows:

Ectophylla, new genus.

Nose-leaf erect, basal part notched in middle of free margin. Nostrils entire (but grooved continuous to outer margin of nose-leaf) separated by a small rounded nodule which apparently represents the lower part of the median leaf-crest, which otherwise is absent. Lateral gland-clumps rudimental, borne on the surface of a flat, scalloped skin-fold. Auricle as in *Hemiderma*, simple, erect, ovate; as measured from the crown it is shorter than the head. The single scallop begins abruptly at the middle of the moderately convex outer border. The external basal lobe convex and slightly thickened; basal ridge, or lappet, none. The internal basal lobe is rounded and free. Tragus almost one-half the height of the auricle, moderately convex on the inner margin, irregularly convex on outer, and furnished with two coarse serrations near the base. Lower lip mutilated. The mentum shows signs of having borne a row of eight (?) marginal rounded warts, and a small median one placed behind them. The lip apparently not cleft. Wings as in subfamily. Interfemoral membrane consists of a broad hem to the inferior extremity and pubis. Tail absent; tip of calcar projecting. The wing membrane reaches a point nearly midway between the ankle and the base of the metatarsi. The first phalanges shorter than the second. The first phalanx of the third finger about one-third the length of the corresponding metacarpal bone. The fifth metacarpal bone as long as the forearm. The phalanx of the second digit $3\frac{1}{2}$ millimeters long, and equals about one-fourth the length of the corresponding metacarpal bone.

Ectophylla alba, new species.

Characters of the single species that of the genus. Above, the hair is of a dull whitish hue, and unicolorous to the level of the shoulder. Through the rest of the back the hair is of a duller shade of white, except the tip, which is fawn. Below, the coloration is much the same as above, but the sides of the trunk, from the shoulders to the rump, are unicolorous dark fawn, while the median part is whiter. Owing to the humeri being broken and the wing membranes distorted, it is



FIG. 1. Front view of head of *Ectophylla alba*; $1\frac{1}{2}$ times natural size.

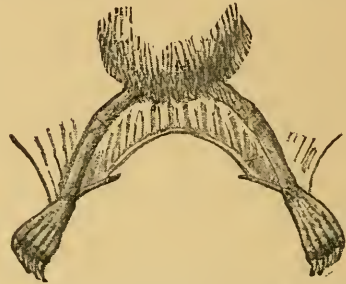


FIG. 2. Dorsal view of the inferior extremities and interfemoral membrane of *Ectophylla alba*; $1\frac{1}{2}$ times natural size.

difficult to determine the exact distribution of the hair on the membrane. Below, unicolorous dark fawn hair appears to extend outward as far as the elbow. The interfemoral membrane is naked.

Measurements.

	Millimeters.		Millimeters.
Head and body (from crown of head to base of tail)	36	Fourth digit:	
Length of arm	17	Length of fourth metacarpal bone	25
Length of forearm	25	Length of first phalanx	$7\frac{1}{2}$
First digit:		Length of second phalanx	8
Length of first metacarpal bone	3	Fifth digit:	
Length of first phalanx	3	Length of fifth metacarpal bone	25
Second digit:		Length of first phalanx	6
Length of second metacarpal bone	21	Length of second phalanx	7
Length of first phalanx	$3\frac{1}{2}$	Length of head	14
Third digit:		Height of ear	10
Length of third metacarpal bone	25	Height of tragus	$5\frac{1}{2}$
Length of first phalanx	9	Length of thigh	$8\frac{1}{2}$
Length of second phalanx	12	Length of tibia	10
Length of third phalanx	6	Length of foot	8
		Width of interfemoral membrane from middle of rump	4