

# STRI newsletter

September 11, 1995

SMITHSONIAN TROPICAL RESEARCH INSTITUTE - Apartado 2072, Balboa, Panamá

No. 36

## TUPPER CENTER SEMINARS

No noon seminar scheduled for Tuesday, September 12.

## NAOS LAB LUNCHEON

Friday, September 15, Naos Marine Laboratories luncheon seminar speaker will be Neil Davies, University College, London, at the Surfside Conference Room

*Biogeography of West Indian Butterflies*

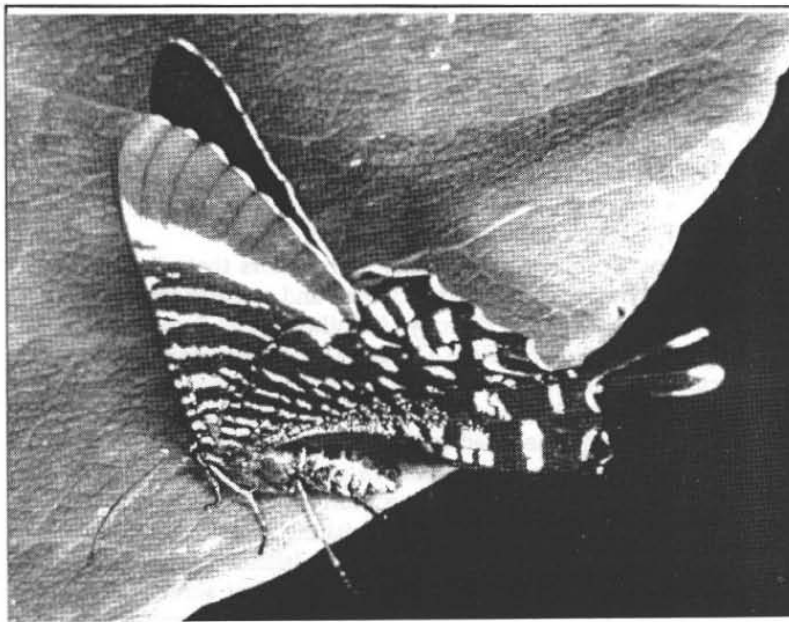
## PEOPLE

### Arrivals

- From the SI Office of Planning, Management and Budget, Norman Novack and John Clark, Sep 11-16, and Kathy Johnson, Sep 11-14, on official business at STRI.
- Robert Stallard, U.S. Geological Survey, Colorado, Sep 11, to continue long term monitoring of the biochemical cycles in watersheds on BCI, at the Island.
- David King, Australian National University, Sep 12-9 Nov, to study the geographic patterns in tree architecture in relation to the environment, at BCI.
- Robert Srygley, University of Texas, Sep 15-15 Oct, to study the orientation of butterflies migrating across the Caribbean Sea and Panama; mating behavior of owl butterflies; butterfly systematics, at Gamboa and BCI.
- Vololoniaina Jeannoda, STRI Short-term visitor from the University of Antananarivo, Managascara, Sep 15-15 Oct, to visit Bert Leigh to collaborate with a publication, at Tupper.

### Departures

- Héctor Guzmán, Sep 15-22, on official business to the Cayos Cochinos Station in Honduras.
- To Washington D.C., to attend the SI Molecular retreat: Eldredge Bermingham, Sep 10-21; Harilaos Lessios, Sep 10-13; Leigh Weight, Sep 8-24; Shawn McCafferty, Sep 9-14, and Bailey Kessing, Sep 8-26.



During last week we witnessed the first major rainy season flight of the *Urania fulgens* (in the photo) to the south, over the city of Panamá, since 1987. An interesting relationship of this butterfly and the plant *Omphalea*, on what it feeds, has been the main subject of 30 years of research by Neal G. Smith at STRI. For more information, see GroupWise: *Urania* \*\*\* Durante la semana pasada fuimos testigos del primer vuelo numeroso de estación húmeda de la *Urania fulgens* (en la foto) en la ciudad de Panamá, hacia el sur, desde 1987. Una interesante relación entre esta mariposa y la planta *Omphalea*, de la cual se alimenta, ha sido estudiada durante 30 años por Neal G. Smith, en STRI. Para mayor información vea "Urania" en GroupWise (\*).

(Foto: M.A. Guerra)

### Felicitaciones

- A Elizabeth Sanchez y Edgardo Rodríguez por el nacimiento de su segundo hijo, Leonardo Andrés, el día lunes 4 de septiembre.
- A Eduardo Montenegro y Elizabeth Hidalgo, por el nacimiento de su hijo Francisco Javier, el jueves 7 de septiembre.

## THINGS YOU SHOULD KNOW

### At the Tupper Center

Tue, Sep 12 Scientific Staff Meeting, LMR, 2pm  
Thu, Sep 14 OFE briefing to APEDE group, Auditorium, 12:45pm.

### At the Culebra Marine Reserve

Tue, Sep 12 Colegio Episcopal de Panamá  
Wed, Sep 13 Academia Hebrea de Panamá  
Thu, Sep 14 St. Mary's School  
Fri, Sep 15 Instituto Bilingüe Las Cumbres  
Sat, Sep 16 Grupo de la Comunidad San Miguelito

(\*) Vea también "Las Mariposas Vuelan al Sur", Panamá América, Sep 9.

**At Barro Colorado Island Station**

- Sat, Sep 9 Groups from the Audubon Society of Panama and Panama City  
 Sun, Sep 10 *Colegio San Vicente de Paul*  
 Sat, Sep 16 Groups from Curundu Junior High School and Panama City  
 Sun, Sep 17 Aerobic Gym "No Limit"

**From the Visitor Services Office**

We again wish to remind all staff and visitors that all visits to BCI must be pre-arranged. Staff and researchers can coordinate with BCI directly. All others must do so through the Visitor Services Office. This is especially important at this time because of the limited space on the *Jacana*, due to the census of the 50 ha. plot. Regular visitors are being scheduled on Saturdays and Sundays only, in groups of no more than 15 persons each. On Sundays we will also schedule no more than 2 "guest" groups to allow STRI employees or visiting researchers to take their friends or relatives to the Island. These groups must be scheduled on a first-come, first serve basis, and are limited to five persons. Whenever possible, we will schedule "guest" groups on STRI holidays. No visitors may be scheduled on week-days. VIP and special visits must be coordinated by the Protocol Office. The launch operators have instructions not to leave the dock with more people than the vessel is licensed to carry. Your cooperation will be greatly appreciated.

**ANNOUNCEMENTS****Notice of Opening at STRI**

Applications for Ship's Engineer will be accepted effective immediately, to work at the STRI research vessel. The selected person will serve, with one assistant, as the watch engineer at sea, as the senior or administrative engineer in port and will also occasionally stand watches as the officer on the bridge while at sea. Responsibilities will include hands-on maintenance and repair of all the ship's systems, planning and implementing maintenance schedules and organization and maintenance of a spare parts inventory. Applicants must have one year (360 watches) at the level of first assistant engineer or equivalent experience. Must have USCG license as first assistant engineer, motor vessels or equivalent, and read, speak and understand English. Fluency in Spanish is desired. This is a permanent, federal full time position, and the salary will depend on qualifications and experience. Interested must get in contact with the STRI Office of Human Resources at 227-3174, or write to STRI, P.O. Box 3353, Balboa, Panama.

**At the Office of Education, Room 340****En la Oficina de Educación, No. 340**

You may find information on courses, congresses, training and job opportunities, fellowships, etc., that is too long to publish. Some of this information concerns:

- Taller en Sistemas de Radiotelemedría, Costa Rica
- The Garden Club of America (GCA) Fellowship for Landscape Architecture in Rome, the GCA Interchange Fellowship, the GCA Awards for Summer Environmental Studies, the Katherine M. Grosscup Scholarships, the GCA Awards in Tropical Botany, the Catherine H. Beattie Fellowship and other programs.
- Positions for an Insect/Ecologist, a Forester Ecologist and a Hydrologist, at the Institute of Pacific Islands Forestry.
- Invitation from the Archaeological Institute of America to publicize your programs in the 1996 *Archaeological Fieldwork Opportunities Bulletin*.
- Interdisciplinary Program in Insect Science.

**NEW STRI PUBLICATIONS**

- Dudley, Robert. 1995. "Aerodynamics, Energetics and Reproductive Constraints of Migratory Flight in Insects." In: *Insect Migration: Tracking Resources Through Space and Time*: 303-319, ed. by V.A. Drake and A.G. Gatehouse. Cambridge University Press.
- Gilbert, Gregory S. 1995. "Rain Forest Plant Diseases: The Canopy —Understory Connection." *Selbyana* 16(1): 75-77.
- Wcislo, William T. and Buchmann, S.L. 1995. "Mating Behaviour in the Bees, *Dieunomia heteropoda* and *Nomia tetrazonata*, with a Review of Courtship in Nomiinae (Hymenoptera: Halictidae)." *Journal of Natural History* 29: 1015-1027.
- Thiele, Alexandra, Winter, Klaus and Krause, Heinrich. 1995. "Photoinhibition of Photosynthesis Related to Xanthophyll Cycle and D1 Protein Turnover in Higher Plants." [Abstract] In: *Xth International Photosynthesis Congress*: 198.
- Wcislo, William T. and West-Eberhard, Mary Jane. 1995. "Nourishment and Evolution in Insect Societies", edited by James H. Hunt and Christine A. Nalepa [Book review]. *Quarterly Review of Biology* 70: 226.

**Last Minute ••• Al Cierre**

Marcela Vargas had a baby girl on Sunday, Sep 10. Her name is Andrea Alejandra, and weighed 7.2lb at birth. We wish to congratulate both Marcela and her husband Guillermo ••• Marcela

Vargas tuvo una niña el domingo 10 de septiembre de 51cm, con un peso de 7.2 lb. Su nombre es Andrea Alejandra. Muchas felicitaciones a sus padres Marcela y Guillermo.