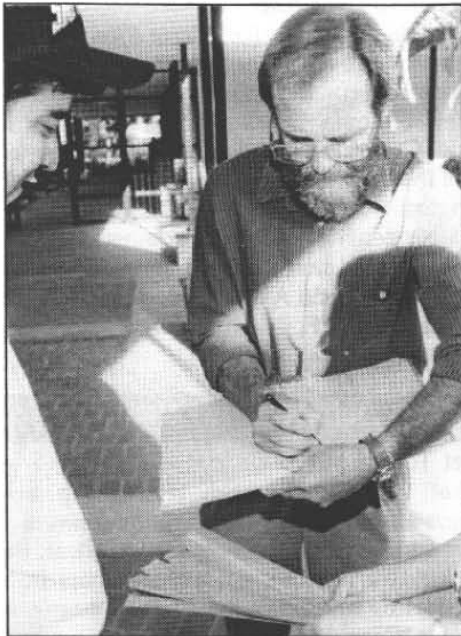


# STRI newsletter

January 13, 1995

SMITHSONIAN TROPICAL RESEARCH INSTITUTE - Apartado 2072, Balboa, Panamá

No. 2



On Friday, Jan 6, STRI offered a press conference to present the book "Fishes of the Tropical Eastern Pacific", by Gerald A. Allen and D. Ross Robertson. The event was attended by the most important local newspapers, radio and TV stations. In the photos (left) Robertson autographs a copy of the book; on the left, Tony Coates welcomes the media and (in the table, from the left) Gustavo Justines, Director of the Panamanian Fishing Association and Mirey Endara, INRENARE Deputy Director. With them, Stanley Heckadon and D. Ross Robertson, STRI.

(Photos: A. Montaner)

## TUPPER CENTER SEMINARS

Tue, Jan 17, noon seminar speaker will be Daniel Rubenstein, Princeton University  
*Ecology and Social Organization  
in Horses, Zebras and Wild Asses*

### Abstract

Although all equids are members of the same genus and are very similar both morphologically and physiologically, they exhibit a wide array of social organizations. Whereas horses and plains zebras live in permanent membership group of many females and one male, Grevy's zebras and the wild asses live in more amorphous groups in which female membership changes often and males only visit occasionally. This talk examines what benefits and costs are associated with group living in equids, how they are amplified or attenuated by different environmental conditions, and thus how the differences in social organization evolve.

## BAMBI SEMINAR

Thursday, January 19, Bambi seminar speaker will be Dan Rubenstein, Princeton University, 7:30pm.

*Reproductive Strategies of Horses, Zebras and Asses:  
Decisions, Decisions, Decisions*

Call BCI for transportation arrangements.

## PEOPLE

### Arrivals

- Andrew Baker, University of Miami, Jan 15-15 March, to work with Nancy Knowlton, at Naos.
- Irby Lovette, University of Pennsylvania, Jan 15-1 April, to study the evolutionary ecology of West Indian Birds, at Naos.

### To All STRI Scientific and Administrative Staff

Director Ira Rubinoff will present a 'state of STRI' address to all members of the staff on Friday, January 20, at 3:00pm in the Tupper Center Auditorium. Rubinoff will review a wide range of issues concerning STRI's present and future developments. All are strongly encouraged to attend.

- Elizabeth Newell, Hobart and William Smith Colleges, NY, Jan 15-18 Feb, to study the dynamics of carbohydrate storage in Neotropical canopy trees, at Tupper.
- Alan Prather, University of Texas, Jan 15-28 Feb, to study the evolution of floral morphology of *Cobaea* (Polemoniaceae) in relation to pollinators, at Fortuna.
- Daniel Rubenstein, Princeton University, Jan 16-21, to visit STRI facilities and present seminars at Tupper and BCI.
- Carla Penz, Short-term fellow from the University of Texas, Jan 16-16 April, to study the phylogenetic relationship among *Helicoriiti* genera (Lepidoptera: Nymphalidae), at Gamboa.
- Robert Srygley, University of Texas, Jan 16-31 Aug, to work with Carla Penz until April, and then continue with his research on the orientation of butterflies migrating across the Caribbean Sea and Panama; mating behavior of owl butterflies and butterfly systematics, at Gamboa and BCI.
- Sean Morris, and Keith Brust, Oxford Scientific Films, Jan 17-13 Feb, to continue their STRI filming project, at Gamboa.
- Pedro León Azofeifa, Burch Fellow of Theoretical Medicine from the Molecular and Cellular Biology Center of the University of Costa Rica, Jan 18-21, for a brief visit of STRI facilities and to consult with staff.
- Ghislain Rompre, Illinois Natural History Survey, Jan 20-15 Jun, to work with Jeff Brawn's project on the stability of tropical forests and tropical forest fauna on military installations of the Panama Canal Area.
- Fernando Santos Granero, new STRI scientist, to join the staff at Tupper. He is accompanied by his wife Clara and two daughters, Maria Soledad, 5, and Luciana, 3.

### Departures

- A. Stanley Rand, Jan 15-22, to Brazil, on a research expedition.
- D. Ross Robertson, Jan 17-30, to Providencia, Colombia, to do field research.

### Back in Panama

We are happy to announce that Dr. Martin Moynihan is back in Panama since last week, and has had a total recovery from his recent illness.

#### Reminder ••• Recorderis

Monday, January 16 is the commemoration of Martin Luther King Jr.'s birthday and a Holiday for STRI ••• *El lunes 16 de enero es la conmemoración del nacimiento de Martin Luther King Jr. en los Estados Unidos y es día feriado para STRI.*

### Los Más Destacados del Año

tomado de "La Nación" Costa Rica, 25/12/94  
 "El reconocimiento como personaje de la ciencia lo obtuvo Pedro León Azofeifa, miembro del Centro de Investigación en Biología Celular y Molecular de la Universidad de Costa Rica, quien fue premiado en setiembre por el Instituto Smithsonian, cuya sede central está en Washington. Sus proyectos se centran principalmente en el análisis genético de enfermedades humanas, y entre ellas destaca una investigación sobre la sordera hereditaria..." (pág.17). [León Azofeifa fue postulado por STRI para la Beca George E. Burch, y parte de este año trabajará con nosotros, en el Instituto].

### THINGS YOU SHOULD KNOW

#### Informal "Get Togethers"

In the spirit of strengthening the relationship and exchange of ideas among the STRI scientific community, visitors, fellows and heads of administrative offices, the STRI director will initiate informal get togethers on a periodic basis, starting on Friday, Jan 20, from 4-6pm, at the Tupper Center "Corotú" cafeteria. It will be on a cash bar basis, offering beer, wine, soft drinks and snacks for sale. Don't miss this opportunity to interact with your colleagues in an informal and relaxed atmosphere!

#### At the Library ••• De la Biblioteca

The Library will close on Saturday, Jan 14, to allow its personnel to enjoy the long week-end ••• *El día sábado 14 de enero la biblioteca permanecerá cerrada para que su personal pueda disfrutar del fin de semana largo.*

#### At the Tupper Center

- Tue, Jan 17
  - Noon seminar by Daniel Rubenstein, visiting scholar from Princeton University, Auditorium.
- Wed, Jan 18
  - Presentation of *Imágenes Contra El Sida* Exhibition to the Minister of Health, Exhibit Hall, 10am.
  - Administrative Managers' meeting, Large Meeting Room, 1:30pm.
- Fri, Jan 19
  - General STRI Scientific and Administrative Meeting, Auditorium, 3pm.
  - Informal "get together", *Cafetería del Corotú*, 4pm.

#### At the Culebra Marine Reserve

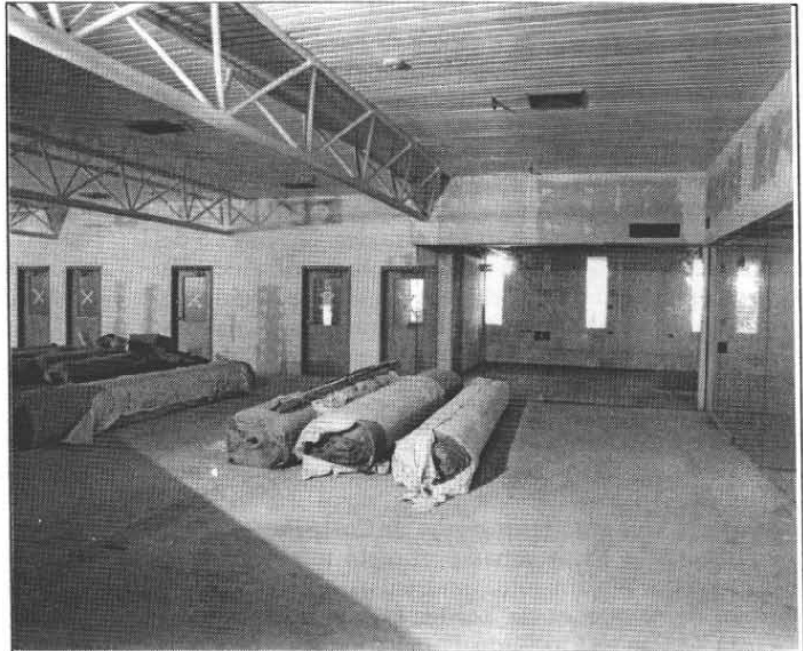
- Tue, Jan 17 *Escuela Naciones Unidas*
- Wed, Jan 18 *Escuela Naciones Unidas*
- Thu, Jan 19 *Centro de Orientación Infantil*
- Fri, Jan 20 *Jardín de Niños*
- Sat, Jan 21 *Home schoolers and adults*

**At the Barro Colorado Island Station**

- Sat, Jan 14 Club Kiwanis and Colegio José María Barranco, Chorrera  
 Sun, Jan 15 Universidad Santa María La Antigua  
 Sat, Jan 21 ANCON and Cruz Roja  
 Sun, Jan 22 Panama Canal Commission

**African Honeybees Alert****Alerta sobre Abejas Africanas****¡OJO!**

David Roubik has found an African honeybee colony at chest height on Zetek 4, 10 m N, in a fallen, large branch, on Barro Colorado Island. It is potentially very dangerous to those working in the area—if they are not aware of it, hit it or disturb it ••• *David Roubik ha encontrado una colonia de abejas africanas, a la altura del pecho (1.33m) que se encuentra sobre una rama grande caída a 10 metros al norte del Dormitorio Zetek 4 en la Isla de Barro Colorado. La colonia es potencialmente muy peligrosa para aquellos que trabajan en el área, si no están al tanto de ella y la golpean o molestan accidentalmente.*



Construction work to remodel the old library building has been completed. At this stage, the building is undergoing electrical work, painting and general decoration. The project is scheduled to be ready for the move of the librarians by mid-February ••• *El trabajo de construcción para remodelar el viejo edificio de la biblioteca terminó para dar paso a los trabajos de electricidad, pintura y decoración en general. Se espera que el proyecto esté listo para la mudanza de los bibliotecarios a mediados de febrero.*

(Foto: A. Montaner)

**NEW STRI PUBLICATIONS**

- Duke, Norman C. 1994. "A Mangrove Hybrid, *Sonneratia xurama* (Sonneratiaceae) from Northern Australia and Southern New Guinea." *Australian Systematic Botany* 7: 521-526.
- Ibáñez D., Roberto, Jaramillo, César A. and Solís, Francisco A. 1994. "Geographic Distribution: *Phyllobates lugubris*." *SSAR Herpetological Review* 25(4): 161.
- Paton, Steve, Castro, Isabel C. and Whelan, Prádraig. 1994. *Introducción a la Bioestadística de Campo*. Quito: Fundación Charles Darwin para Islas Galápagos.
- Piperno, Dolores R. 1994. "On the Emergence of Agriculture in the New World." *Current Anthropology* 35(5): 637-643.

**ANNOUNCEMENTS****Call for James Smithsonian Society Grant Proposals**

The James Smithsonian Society was established in 1977 by the Board of Regents and the Smithsonian National Board both to provide unrestricted funds in support of Institutional priorities and to grant funds on behalf of specific Smithsonian projects. Funds from the Society, which composes the highest level of The Contributing Membership, are generated from members' annual contributions. Since its inception, the society has awarded annual grants totalling more than \$4 million to numerous Smithsonian projects including exhibitions, educational programs, research activities, and acquisitions. Proposal guidelines and a list of 1994 Society grants are available from the Director's Office. All proposals must be channelled through the unit director and the appropriate programmatic Assistant Provost or Assistant Secretary. After signatures are obtained, the proposals must be submitted before March 15. A panel comprised of three Smithsonian Council members will evaluate all proposals in mid-May and recommend awards for the Provost's final approval.

### Curso de Dendrología Tropical

*Costa Rica, 13 a 31 de marzo*

El Programa de Educación Continuada del Centro Científico Tropical de San José, Costa Rica, ofrecerá un curso en español de Dendrología Tropical para profesionales y personas interesadas en Ingeniería Forestal, biología, Conservación de la Biodiversidad, Agronomía, Ornitología, Ecología, Geografía, Desarrollo Rural y otras áreas de los recursos naturales. El objetivo del curso es la capacitación intensiva en la identificación de campo de árboles y arbustos del trópico americano, principalmente hasta el nivel de familias y géneros y, en algunos casos, hasta el nivel de especies. Capacitación suficiente para que los estudiantes progresen rápidamente por su cuenta en la identificación de las plantas de otras regiones tropicales. El curso será eminentemente práctico. Se ofrecerán abundantes ejercicios en el aula y se harán viajes intensivos al campo en tres grandes regiones de Costa Rica. El cupo es limitado a 18 personas y el costo total del curso, incluyendo alojamiento, matrícula, alimentación y viajes de campo es de \$2,500. El transporte aéreo a Costa Rica no está incluido. Para información adicional favor ponerse en contacto con Humberto Jiménez Saa, Centro Científico Tropical, Apartado 8-3870-1000, San José, Costa Rica. Tels. (506) 225-2649 y (506) 253-3267 • Fax (506) 253-4963. Interesados en el formulario de inscripción pueden acercarse a la Oficina de Becas y Educación de STRI, Centro Tupper.

### SAFETY NEWS ••• SOBRE SEGURIDAD

Congratulations to the BCI and San Blas "Emergency Response Teams" whose timely and professional responses resulted in the successful evacuations of Gerhard Zotz and Plinio Góndola from their respective duty stations last Wednesday. On that afternoon, Zotz fell against the side of his boat experiencing bruises and a few broken ribs. Around the same time, Góndola was hurt as he was lowering his boat into the water, experiencing multiple fractures in his middle and index fingers for which corrective surgery was performed on Thu, Jan 12.

The evacuations were the result of pre-established emergency procedures which required an important level of coordination. Most coordination is currently handled through the radio on Channel 81. The Safety Office requests that anyone not involved in a rescue or evacuation operation, to stay off the air until an "all clear" announcement is made. As soon as a medical emergency is radio in, Channel 81 will be on emergency status until further notice, since accurate and

concise information must be transmitted. The person calling out for help must supply his or her name, location, emergency condition to his or her respective station. It is important to note that long transmissions are often not copied well, so please keep transmissions to its minimum possible form ••• *Nuestras felicitaciones a los equipos de urgencia de Barro Colorado y San Blas, cuyas acciones rápidas y profesionales resultaron en las evacuaciones exitosas de Gerhard Zotz y Plinio Góndola de sus respectivas estaciones de trabajo el miércoles pasado. Esa tarde, Zotz calló de su bote, sufriendo severos golpes y costillas rotas. Al mismo tiempo Góndola se accidentó mientras bajaba su bote al agua, experimentando fracturas múltiples en sus dedos medio e índice, por lo que fue necesaria cirugía reconstructiva, el jueves 12.*

*Las evacuaciones son el resultado de procedimientos pre-establecidos que requieren de un grado de coordinación importante. La mayoría de la coordinación se maneja actualmente a través del radio, en el Canal 81. La Oficina de Seguridad requiere que cualquiera que no esté involucrado en una operación de rescate o evacuación, se mantenga fuera del aire hasta que la señal de "all clear" se escuche. Tan pronto una urgencia médica se transmite por radio, el Canal 81 entra en estado de urgencia hasta nuevo aviso, ya que información concisa y precisa debe transmitirse. La persona que pide ayuda debe dar su nombre, localización y condición de urgencia a su estación. Es importante enfatizar que las transmisiones largas no se escuchan bien, por lo que los mensajes deben mantenerse lo más cortas posibles. ¡Arriba con el buen trabajo!*

