

# STRI newsletter

May 13, 1994

SMITHSONIAN TROPICAL RESEARCH INSTITUTE - Apartado 2072, Balboa, Panamá

No. 18

## TUPPER CENTER SEMINARS

Tue, May 17, noon seminar speaker will be Stephen T. Emlen, Cornell University.

### *Function and Dysfunction in Avian Family Systems*

#### Abstract

Family-dwelling birds provide excellent opportunities for testing evolutionary predictions about social interactions among relatives. I will provide a personalized overview of current thinking both about the evolution of families and about the social dynamics to be expected between family members. Using an adaptationist approach, I will argue that a simple model incorporating only four parameters (kinship, dominance, the magnitude of any group size benefits, and the expected payoff of independent breeding) can predict many facets of family life in birds.

## PEOPLE

### Arrivals

- Chris D'Orgeix, Virginia Polytechnic Institute, May 14, to continue studies of multiple paternity in the *Agalychnis callidryas* frog, at Gamboa.
- Katherine Taylor, Villanova University, May 15-30 Aug, to study the dispersal ecology of *Chrysoclampea eclipses*, on BCI.
- Robert Srygley, University of Cambridge, UK, May 15-30 Jun, to carry out studies on the mating behavior in Owl butterflies, at Gamboa.
- Participants to the Washington and Lee Universities Field Course, May 15-29.
- Evandro de Oliveira, University of Texas, May 15-15 Jul, to study the solar orientation and compensation for wind drift in migrant butterflies, on BCI.
- Jennifer Buff, National Zoological Park, May 15-15 June, to work with Alexandra Sangmeister on Eugene Morton's long-term project, at Gamboa.



Salvador Sánchez, president of Refinería Panama, S.A., gives a donation of \$10,000 to Ira Rubinoff in support of the "Patronato del Centro Marino" at Culebra Point. In the photo are also Victor Fábrega (left), from Refinería, S.A., Georgina de Alba, and Herman Bern (right), president of the "Patronato" ••• Refinería de Panamá aportó \$10,000 para apoyar al Centro Marino en Punta Culebra. (Foto: A. Montaner)

- Gretchen North, UCLA, May 15-22, to work with Nobel Park, on BCI.
- Irvy Lovette, NSF fellow from the University of Pennsylvania, May 15-15 Aug, to study the ecological correlates of lineage age in West Indian birds, at Naos.
- Keith Brust, Oxford Scientific Films, May 16-30 Jun, to document projects at STRI.
- Rafael Coma, University of Buffalo, NY, May 16-10 Oct, to work with Howard Lasker on the fertilization success among broadcast spawning benthic invertebrates, on San Blas.
- Kiho Kim, Short-term fellow from the State University of New York, May 16-10 Oct, to study the patterns on growth in colonial benthic organisms: a resource capture model, on San Blas.
- Tony Jolly, BBC Open University Series (Ecology and Oceanography), May 16-21, to visit BCI and consult with the scientific staff for future filming.
- Sean Morris, Justine Evans and John Brown, Oxford Scientific Films, May 18-31, for documentary purposes, at Gamboa.
- Jerome Howard, University of New Orleans, May 18-15 June, to work at Steve Hubbell's community experimental test on insects and mammals control over the tropical forest diversion.

- Thomas Eltz, Graduate Student fellow from Duke University, to study if male euglossines really want the floral fragrances as reward for pollination.
- Gregory Adler, May 20-15 Aug, for an experimental study of the population limitation in a tropical fruit-eating rodent, sponsored by a Scholarly Studies Grant, at Gamboa.
- Christina Caruso, Illinois Natural History Survey, May 20-15 Jun, to work with Jeffrey Brawn, on the mainland.
- Kaoru Kitajima, Mellon Postdoctoral fellow, and assistant Deborah Orlander from the University of Missouri, May 20-20 Aug, to carry out studies on the canopy plant allocation responses to seasonal and spatial variation in light and water availability, at Tupper.
- Steve Mulkey, STRI Visiting Scientist, May 20-20 Aug, on a Scholarly Studies Grant with Joe Wright to work on *Psychotria* and *Marantaceae*.

#### Departures

- Antony Coates, May 14-Jun 11, to Washington D.C., on official business at SI and then on vacation.
- Ana Maria Ford and Doris Martiz, May 15, to Miami, to attend the meetings and exhibition of the Museum Store Association. Ana Maria will then take a short vacation and travel to D.C. to attend a training course. She will be back at STRI on Jun 12.
- Leopoldo Leon, May 15-31, to Washington D.C., on official business and a training course at SI.
- Jeremy Jackson, May 20-30, to Orange County, CA, to attend the NRC Workshops in Marine Biodiversity.

#### New Honors

- Paul Colinvaux has been appointed to the University of Michigan as an adjunct faculty member with the title of Research Scientist of the Center for Great Lakes Research and Aquatic Sciences as of April 1.
- Héctor Guzmán was invited by the Biodiversity Support Program/WWS, to the Annual Conference of the Society for Conservation Biology at Guadalajara, México, to document on the results of his project to restore Pacific Coral Reefs.

### THINGS YOU SHOULD KNOW

#### Delegation of Authority

Leonor Motta, Assistant Director for the Administration will be Acting Director from May 14-30.

#### At the Tupper Center

Tue, May 17 Noon seminar by Steve Emlen, AUD.

#### At the Culebra Marine Reserve

Tue, May 17 *Centro de Orientación Tu Guía*  
 Wed, May 18 *Centro de Orientación Tu Guía*  
 Thu, May 19 *Centro de Orientación Tu Guía*  
 Fri, May 20 *Centro de Orientación Tu Guía*  
 Sat, May 21 Private group.

#### Agriculture Federal Credit Union (AFCU): Información Para Todos Los Miembros

##### Aprobación de Préstamos:

Para agilizar el proceso, a todos los miembros en general, por favor entregar sus documentos a Celideth para que los revise y certifique que todo está en orden y pasarlos a la firma del Notario. Para su facilidad, ella se encargará luego de hacerlos llegar a AFCU.

##### Retiros de su Cuenta de Ahorros:

Con el fin de acelerar su solicitud de cheques contra su cuenta de ahorros, debe usted dirigir su fax de la siguiente manera: To: AFCU Telephone Center (es el centro de operaciones a través del fax de AFCU), No. de Fax: 001 (202) 479.3877. Anotar su nombre completo, No. de empleado, No. de cuenta, No. de Membresía. Su petición será atendida de inmediato. Pero si Ud. dirige su fax a la atención directa de Judy Smith, su solicitud demorará, ya que a ella le llegará su fax 2 (dos) días después, con el consiguiente retraso de su solicitud.

Si Ud. ya ha enviado un fax y no ha recibido respuesta, su segundo fax debe decir "Second Request" (segunda solicitud), con el fin de que se eviten duplicaciones de una misma transacción.

##### Solicitud de Préstamos:

Toda solicitud de préstamos debe ser dirigida por correo a la atención de Judy Smith, AFCU Manager, Smithsonian Institution, Suite B-10, 1000 Jefferson Drive, S.W., Washington D.C. 20650, ó por Fax: (001) 202. 479.3877.

##### Por Favor Recuerde:

Toda correspondencia o documento en Español debe ser traducido al inglés.

Que el "Notario" autorizado para efectos del Credit Union, al igual que el Gerente Autorizado en STRI, es Elena Lombardo, ADEA, con la asistencia de Celideth De León en Tivoli/Tupper. Mercedes Arosemena en Naos y Vielka Rodríguez en BCI.

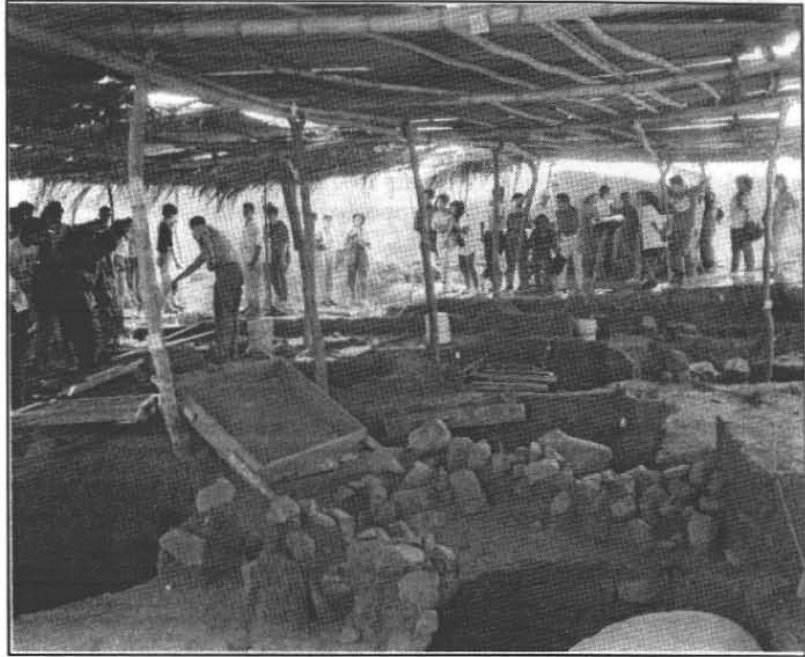
## ANNOUNCEMENTS

### Buyout News •• Noticias sobre Incentivos por Jubilaciones Voluntarias

By this time, all STRI employees must have received a copy of the memorandum dated April 28, 1994 from Constance Berry Newman, the Smithsonian Institution Under Secretary on the subject of Voluntary Separation Incentive Payments. The STRI Office of Human Resources has received the information packages which will be available for all interested persons. Please remember that the period selected by the Smithsonian during which employs can apply for buyouts is June 1, 1994 to July 15, 1994, with an effective date of separation of October 1, 1994. For questions or consultations, please call Carmen Sucre, Tivoli, Tel. 27-3174 ••• Ya todos los empleados de STRI deben haber recibido una copia del memorándum del 28 de abril de 1994 de Constance Berry Newman, Sub-Secretaria de la Institución Smithsonian, sobre el asunto de los Pagos de Incentivos por Jubilaciones Voluntarias. La Oficina de Recursos Humanos de STRI ya recibió los paquetes informativos, los cuales están disponibles para todos los interesados. Les recordamos que el período escogido por el Smithsonian durante el cual los empleados podrán solicitar este incentivo será del 1o. de junio de 1994 al 15 de julio de 1994, con fecha de jubilación del 1o. de octubre de 1994. Para preguntas y consultas, favor llamar a Carmen Sucre, al teléfono 27-3174.

### Investigador Visitante Dicta Seminario

Durante la semana del 25 al 29 de abril, Stephen Mulkey de la Universidad de Missouri en St. Louis, dictó un seminario de dos horas diarias (6:30-8:30pm) en el Departamento de Botánica de la Universidad de Panamá. Participaron en el mismo, 25 personas entre estudiantes de los últimos años de Botánica, profesores asistentes, conferencistas y profesores del Departamento. Los tópicos incluyeron estudios de limitaciones de la ganancia de carbono en el sotobosque, bajo condiciones de poca luz, fotoinhibición, varia-



Luis Alberto Sánchez (de espalda) explica el proyecto de excavaciones en Cerro Juan Díaz que lidera Richard Cooke a un grupo de estudiantes del Instituto Episcopal San Cristóbal. Durante el último año, miles de estudiantes han visitado el proyecto, quienes llegan diariamente. (Foto: Richard G. Cooke)

ciones en la calidad e intensidad lumínicas y sequía. Los participantes conocieron técnicas de medición de CO<sub>2</sub> y de interpretación de gráficos de actividad fotosintética relacionadas con diferentes factores ambientales. Una última conferencia suministró una introducción a estudios ecofisiológicos que se están llevando a cabo usando el Sistema de Acceso al Dosel del Bosque en el Parque Natural Metropolitano.

## NEW STRI PUBLICATIONS

- Chang-Yau, Vielka. 1994. "Evolución y Actualización de los Servicios Informativos a una Comunidad Científica: Caso de Una Biblioteca Especializada en Biología Tropical." *Ciencias de la Información*, 25(1): 13-21.
- Daly, John W., Martín Garraffo, H., Jaramillo, César and Rand, A. Stanley. 1994. "Dietary Source for Skin Alkaloids of Poison Frogs (Dendrobatidae)?"
- Salazar Allen, Noris. 1994. "Editorial". *Briolatina* 32: 1.
- Salazar Allen, Noris. 1994. "Taxonomic Results of the BRYOTROP Expedition to Zaire and Rwanda. 16. Lecophanaceae." *Tropical Bryology* 8: 149-152.
- Tyree, Melvin T., Yang, S., Cruiziat, P. and Sinclair, B. 1994. "Novel Methods of Measuring Hydraulic Conductivity of Tree Root Systems and Interpretation Using AMAIZED." *Plant Physiologist* 104: 189-199.

### Lincoln Park Zoo Scott Neotropic Fund

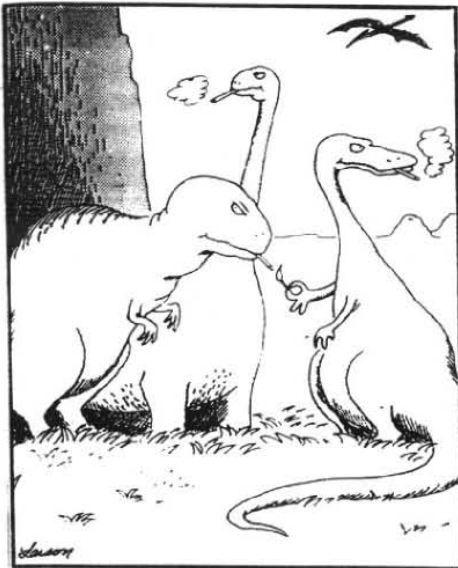
The Lincoln Park Zoo Scott Neotropic Fund supports field research in conservation biology throughout Latin America and the Caribbean. The fund emphasizes support of graduate students and other young researchers, particularly those from Latin America. Since 1986, the fund has awarded over 45 grants in 13 countries. Between five and 15 projects are supported each year. Awards are seldom greater than \$7500, and most awards fall into the range of \$3000-5000. Initial support is for up to 12 months from the date of award. Maximum duration of support is two years. For additional information and application procedures write to: Lincoln Park Zoo Scott Neotropic Fund, c/o Director of Conservation and Science, Lincoln Park Zoological Gardens, Chicago, IL 60614-3895.

### Last Minute News

#### Al Cierre

Next week the Procurement Office will undergo certain remodeling of its work space, and this may affect the regular services of this office. We apologize for the inconveniences •••

*Debido a remodelaciones en la Oficina de Compras a principios de la próxima semana, los servicios prestados por esta oficina se verán afectados. Agradeceremos su comprensión por cualquier inconveniente.*



*The real reason dinosaurs became extinct...*

### NEW STRI BOOKLIST

Algal photosynthesis / RJ Geider & BA Osborne.

QK565.G45 1991X STRI.

Concepts in biological oceanography: an interdisciplinary primer / PA Jumars. QH541.5.S3J85 1993X STRI.

Coral reef ecology / YI Sorokin.

QH541.5.C7S714 1993 STRI.

The Crustacean integument: morphology and biochemistry / MN Horst & JA Freeman, eds.

QL445.2.C77 1993X STRI.

Forest dynamics: an ecological model /

DB Botkin.

QK938.F6B66 1993X STRI.

Haemodoraceae / PJM Maas & H. Maas-van de Kamer.

QK495.H15M111 1993 STRI.

The Lichen symbiosis / V. Ahmadjian.

QK581.A35 1993X STRI.

Measurement techniques in plant science / Y. Hashimoto et al, eds.

QK905.M43 1990X STRI.

Mechanisms of molecular evolution: introduction to molecular paleopopulation biology / N. Takahata & AG Clark.

QH352.M48 1993 STRI.

Molecular markers, natural history and evolution / JC Avise.

QH438.4.B55A95 1994X STRI.

The Natural history of inbreeding and outbreeding: theoretical and empirical perspectives / NW Thornhill, ed.

QH481.N38 1993X STRI.

Origin of land plants / LE Graham.

QE905.G76 1993X STRI.

Rare plants of the world / LS Belousova & LV Denisova.

Ref QK86.A1B45 E1992 STRI.

Stable isotopes and plant carbon/water relations / JR Ehleringer et al, eds.

QK870.S73 1993X STRI.

Statistical analysis of circular data / NI Fisher.

QA276.F488 1993X STRI.

Theory and application of tracers / DS Schimel.

QH541.15.R34S35 1993X STRI.

Advances in the study of behavior, v.23, 1994.