

STRI newsletter

September 24, 1993

SMITHSONIAN TROPICAL RESEARCH INSTITUTE - Apartado 2072, Balboa, Panamá

No. 39

TUPPER CENTER SEMINARS

Tue, Sep 28, noon seminar speaker will be Jorge Illueca, Guggenheim Fellow
The Introduction and Spread of African Pasture Grasses and Their Environmental Impact in the Province of Chiriquí, 1846-1946

Abstract

I used primary sources in the National Archives of Panama, newspapers and early botanical collections to document the introductions on deforestation and the general economy of Panama will be stressed.

PEOPLE

Arrivals

- Oxford Scientific Film crew, Sep 26-10 Oct, to make preliminary contacts for a National Geographic television program "Panama: Science in the Realm of Gold."
- Pole-Equator-Pole Conference participants, Sep 29-3 Oct.
- Jay A. Schneider, post-doctoral fellow, Oct 1-Sep 30 1994, to do research on the evolution of geminate pairs of transisthmian cardiid bivalves, at Naos.
- Rachel Levin, Pomona College, CA, Oct 1-30 Nov, to study the social and hormonal influences on the development of sex differences in a duetting wren, at Galeta.

Departures

- Anthony Coates, Sep 29-16 Oct, to SI at Washington D.C. on official business and a short vacation.

Published weekly by the
STRI Office of Education

Editor: *Maria Luz Calderón*
Director: *Georgina de Alba*
Photographic Services: *STRI Photo Lab*



Nancy Knowlton (left), shows a living coral to representatives of the Panamanian business community during a visit to the Marine Center at Culebra, on Wednesday, Sep 22. This visit was organized to attract local support for this project ••• Nancy Knowlton (izquierda), muestra un coral vivo a representantes de la comunidad panameña de negocios, durante una visita al Centro Marino de Culebra, el miércoles 22 de septiembre. La visita fue organizada para atraer apoyo local a este proyecto. (Foto: A. Montaner)

THINGS YOU SHOULD KNOW

Pole-Equator-Pole (PEP) Workshop

by Paul Colinvaux

STRI will host a National Science Foundation workshop from Sep 30-3 Oct on one of NSF's new initiatives on the paleoecological record of late Quaternary climatic change. The theme of the workshop is a Pole-Equator-Pole transect of the western hemisphere. The 45 invited participants are all researchers concerned with describing and modeling climatic change since the last glacial maximum 18,000 years ago. The workshop follows an earlier one on arctic climatic change that was hosted by John Andrews and Paul Colinvaux at the Institute of Arctic and Alpine Research in Boulder, Colorado. The recommendations of that earlier workshop were incorporated by NSF into a new funding initiative called PALE (Paleoecology of Arctic Lakes and Estuaries). The new workshop recognizes that the paleoecology data set for the last 18,000 years is much stronger for high latitudes than for tropical and equatorial regions, despite the importance of north-south linkages to climatic theory. Accordingly the prime convener of the PEP workshop, Dr. Vera Markgraf, suggested a second workshop to assess what was known of the historical links between arctic and equatorial climates,

and to make recommendations to NSF on the needs for future research. Thus the purpose of the workshop is to explore interhemispheric paleoclimatic connections, the dynamics of circulation systems in the past and the linkages between orbital forcing and global and regional climatic response. It is suggested that a series of paleoclimatic records will be needed along the north-south transect that can be used to explore synchronicity between climatic events at high and low latitudes. The PEP workshop is funded by the Climate Dynamics Program of NSF, its Program Director is H. Zimmerman, who will be present at the workshop. Most of the business of the workshop will be conducted in small group discussion sections, in which individual statements will be limited to five minutes each. Opening reviews on various aspects of the problem will be given as fifteen minute summaries on the morning of Thursday Sep 29 at the Tupper Auditorium after the opening ceremonies. Many of the participants will attend an optional field trip to BCI on Sunday, Oct 3, before departing on Monday Oct 4.

At the Tupper Center

- Tue, Sep 28 ■ "Save the Old Dorm at BCI" Meeting, Large Meeting Room, 10am.
 ■ Noon seminar by Jorge Illueca, Auditorium.
 ■ Fellowships Meeting, Small Meeting Room, 1:30pm.
- Thu, Sep 30 ■ PEP Workshop, Conference Center, 8am-5pm.
- Fri, Oct 1 ■ PEP Workshop, Conference Center, 8am-5pm.
- Sat, Oct 2 ■ PEP Workshop, Conference Center, 8am-5pm.

At the Culebra Marine Biological Reserve

- Tue, Sep 28 *Colegio Javier*, 8:30-11:30am.
 Wed, Sep 29 *Colegio José Domingo Espinar*, 8:30-11:30am.
 Thu, Sep 30 *Colegio José Domingo Espinar*, 8:30am-11:30am.

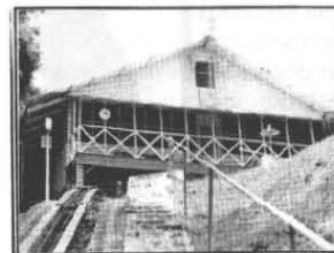
De la Oficina de Recursos Humanos

Se les recuerda por este medio a todos los empleados post-tratado, que cada vez que ocurra un accidente de trabajo, por insignificante que parezca, deberá ser reportado al supervisor o a la oficina respectiva dentro de las primeras 48 horas después de ocurrido el acciden-

te. Ya sea que la persona accidentada reciba atención médica o no, en el Seguro Social o en una clínica particular, es esencial que el accidente de trabajo sea reportado a Riesgos Profesionales de la Caja del Seguro Social. Para mayor información, favor comunicarse con la oficina de Recursos Humanos en Tívoli.

ANNOUNCEMENTS

Save the Old Dorm Meeting



On Tuesday, Sep 28, there will be an open meeting at 10am, Large Meeting Room, on a proposal to "Save the Old Dorm at BCI", to discuss committee reports and plan future action.

Premio Kathleen S. Anderson para Biólogos Promisorios

El Observatorio de Aves Manomet ha creado un premio anual para honrar las sobresalientes contribuciones de Kathleen S. Anderson al Observatorio de Aves Manomet y para promover y perpetuar sus intereses particulares en los campos de la investigación y la educación ambiental. La Sra. Anderson fue directora del MBO durante los primeros 15 años del observatorio donde se iniciaron muchos proyectos a largo plazo. El propósito de este premio es fomentar investigaciones importantes sobre aves en áreas de interés para el Observatorio. Se considerarán solicitudes para el apoyo de proyectos, en una o más de las siguientes áreas: migración, ecología de la alimentación, fragmentación del hábitat, poblaciones, competencia, aves playeras y especies en peligro de extinción. Todos los proyectos que se propongan deben tener lugar en las Américas, y se estimula a que los trabajos se desarrollen en el Observatorio Manomet. Se otorgará un premio anual de \$1,000 en total, ya sea para una persona o dividido entre dos o más ganadores. Cualquier persona que comience una carrera en biología es elegible, aunque es preferible que esté matriculado en un programa académico. Las solicitudes deben someter una propuesta en inglés, antes del 1 de diciembre del año siguiente. Los premios se otorgarán el 1 de febrero. Para mayor información escriba a Kathleen S. Anderson Award, Manomet Bird Observatory, Box 1770, Manomet, MA 02345, U.S. Tel. (508) 224-6521 • Fax (508) 224-9220.

S.I. Office of Sponsored Projects

The SI Office of Sponsored Projects has the following goals:

- Provide high quality services and resources to the broadest base of principal investigators and bureau and central administrators in both pre-award and post-award activities with a culturally and racially diverse staff;
- Improve the level of interaction that OSP has with bureaus, administrative service offices and management committee members, sponsors, federal regulatory agencies and other research institutions so that the research community can be better informed and able to address sponsored project/research issues with clarity and collective knowledge of the risk/benefits to the Smithsonian;
- Increase the sponsored projects' base, unrestricted income and indirect cost recovery by increasing proposal development activities and seeking collaborative activities with industry, consortia and others;
- Decrease potential for audit and federal regulatory disallowance by coordinating/monitoring spending activities with principal investigators, bureau administrators, OCPM, OC and others, improving training offered to staff in these areas, and working in concert with DCAA, private and internal auditors to improve our grant and contract accounting practices wherever possible.

If you would like to be placed on the mailing list or would like further information on funding opportunities, application procedures, or other services provided by the office, please write to: Office of Sponsored Project, 955, L'Enfant Plaza, Suite 7400, MRC 903, Washington D.C. 20560, Tel. (202)287-3796, Fax (202) 287-3707. One copy of the Guide to the Services of the Office of Sponsored Projects is available at STRI with each facility's secretary.



Friends and colleagues of Alan P. Smith were present at a memorial service held at the Tupper Center Auditorium, on Monday, September 20. A fellowship fund was established in Alan's memory. Donations can be sent to Lucy Dorick ••• Amigos y colegas de Alan Smith estuvieron presentes en una ceremonia que se llevó a cabo en su memoria, el lunes 20 de septiembre en el Auditorio del Centro Tupper. Se estableció un fondo para una beca en su nombre. Las donaciones pueden enviarse a Lucy Dorick. (Foto: M.A. Guerra)

NEW STRI PUBLICATIONS

- Johnson, Kenneth G. 1992. "Synchronous Planulation of *Manicina areolata* (Scleractina) with Lunar Periodicity." *Marine Ecology Progress Series* 87: 225-23.
- Lessios, Harilaos A. 1993. "DXY: A Program for Jackknifed Comparisons Between Estimates of Nucleotide Divergence from Restriction Sites." *The Journal of Heredity* 84(4): 317.
- O'Donnell, Sean. 1993. Patterns and Regulation of Division of Labor in the Eusocial Wasp *Polybia occidentalis* Olivier (Hymenoptera: Vespidae). Thesis, University of Wisconsin-Madison.
- O'Donnell, Sean and Jeanne, Robert L. 1993. "Methoprene Accelerates Age Polyethism in Workers of a Social Wasp (*Polybia occidentalis*)." *Physiological Entomology* 18: 189-194.

From: 365 Ways to Save our Planet • Page-a-Day Calendar

In ovens, smaller is more efficient. You use .52 kwh to bake potatoes in a toaster oven, 1.67 kwh to do the same job in a conventional electric model. A light-duty cooker can make a difference in energy use when you're preparing small meals.



Robert Ridgely (left) signs copies of his newly translated book "Las Aves de Panamá" for members of the STRI community, at the Tupper Center Conference Hall, on Monday, September 20 ••• Robert Ridgely (izquierda) firmó copias de su libro recién traducido "Las Aves de Panamá," a miembros de la comunidad de STRI, el lunes 20 de septiembre en el Centro de Conferencias Tupper.

(Foto: A. Montaner)

NEW STRI BOOKLIST

Dictionary of environment and development: people, places, ideas, and organizations / Andy Crump. Ref GE10.C78 1993X STRI.

The Egalitarians, human and chimpanzee: an anthropological view of social organization / Margaret Power. GN365.9.P68 1991X STRI.

Handbook of alligators and crocodiles. QL666.C9H26 1991X STRI.

Island Africa: the evolution of Africa's rare animals and plants / Jonathan Kingdon. QL84.6.A1K56 1989X STRI.

Latin American insects and entomology / Charles L. Hogue. QL476.5.H64 1993X STRI.

The Lepidoptera: form, function, and diversity / Malcolm J. Scoble. QL542.S39 1992X STRI.

MacClade: analysis of phylogeny and character evolution / Wayne P. Maddison, David R. Maddison. QH367.5.M17 1992 STRI.

Poisonous plants: proceedings of the third international symposium / edited by L.F. James ... [et al.].

SF57.5.P65 1992X STRI.

Sex and death in protozoa: the history of an obsession / Graham Bell.

QL366.B45 1988X STRI.

Tropical rainforests: diversity and conservation / edited by Frank Almeda and Catherine M. Pringle.

QH541.5.R27T767 1988X STRI.

Usos tradicionales de arbustos nativos en el sur de Puno / Hermes Torres... [et al.].

QK271.T69 1992 STRI.

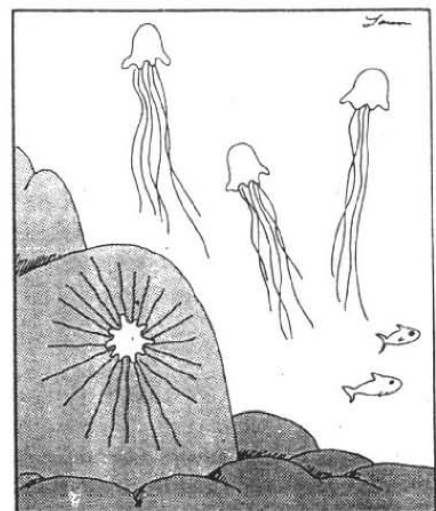
Wari imperialism in Middle Horizon Peru / Katharina J. Schreiber; with a foreword by Jeffrey R. Parsons.

F3429.1.H828S37 1992 STRI.

World directory of environmental organizations. Ref S920.W927 STRI.

The World's savannas: economic driving forces, ecological constraints, and policy options for sustainable land use / edited by M.D. Young and O.T. Solbrig.

HD105.W675 1993X STRI.



When jellyfish travel at unsafe speeds