

SEMINARS

Tupper Center Auditorium

No noon seminar scheduled for Tuesday, October 23, or Tuesday, October 30.

If interested in giving a seminar, please contact Egbert Leigh on BCI.

PEOPLE

On Leave

- October 17 - November 7, Donald Windsor
- October 17 - November 18, Robin Foster.
- October 18 - 26, Francisco Rivera.
- October 19 - November 5, Neal Smith.

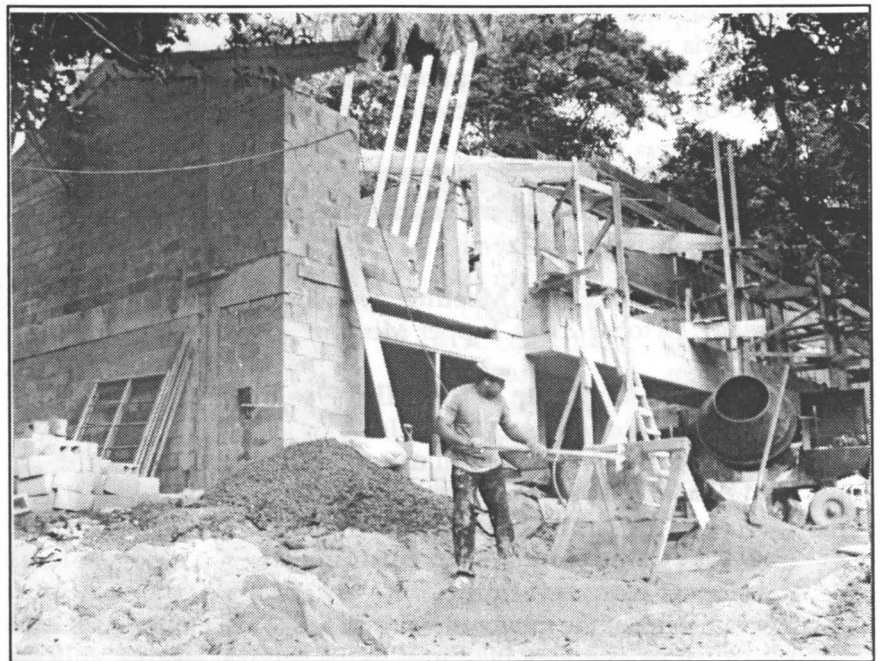
Congratulations!

- To Vielka Vergel, Tupper Administrator, for the birth of a new granddaughter at 12:25 p.m. on Monday, October 15. Alexandra del Carmen weighed 6.04 pounds.

Share your Christmas with Las Pavas Community ••• Comparta su Navidad con la Comunidad de las Pavas

As in previous years the BCNM Game Warden Force is organizing a Christmas party for the Las Pavas community. Help brighten up a child's Christmas by donating used toys. Please send all donations (clothes in any size, food, toys, etc.) to Alejandro Hernández, BCI.

Al igual que en años anteriores el Cuerpo de Guardabosques organiza la fiesta de Navidad para la comunidad de Las Pavas. Haga feliz a un niño donando juguetes usados. Por favor envíe sus donaciones (ropa de todos los tamaños, juguetes, comida, etc.) a Alejandro Hernández en BCI.



The walls and roof of the new dormitory for visitors to the Naos laboratory are almost complete. The dormitory, located just behind the STRI Ancón offices, is expected to be ready early next year and will consist of eight efficiency air-conditioned apartments ••• Las paredes y techo del nuevo dormitorio para los visitantes del laboratorio de Naos ya casi están terminados. Se espera que el dormitorio, que está localizado detrás de las oficinas de STRI en Ancón, este listo a principios del próximo año. Consistirá de ocho apartamentos tipo 'efficiency' con aire acondicionado.

(Foto: M.A. Guerra)

SPECIAL ANNOUNCEMENT • ANUNCIO ESPECIAL

Lack of Budget and Continuing Resolution

STRI has been operating under a Congressional Continuing Resolution, which expires Friday, October 19. We are again in the same situation as two weeks ago, with the threat of a potential closedown unless Congress passes the budget for FY 1991 or passes another continuing resolution • Employees are advised to report for duty on Monday, October 22. Non-essential personnel may be sent home within three hours if we are still without an appropriation. Everyone will be informed early Monday morning of any developments in this matter.

La Falta de un Presupuesto y una Resolución de Continuidad

En este año fiscal 1991, el STRI ha estado operando bajo una resolución de continuidad del Congreso de los Estados Unidos, la cual se vence este viernes, 19 de octubre. Estamos nuevamente en la misma posición que hace dos semanas, con la amenaza de un posible cierre al menos que el Congreso pase el nuevo presupuesto o pase otra resolución de continuidad • Se les anuncia a todos los empleados que deben reportarse a trabajar el lunes, 22 de octubre. El personal que no sea

esencial para el funcionamiento de las instalaciones puede ser enviado a casa antes de que pasen tres horas, si todavía nos encontramos sin un nuevo presupuesto o resolución. Todos serán informados el lunes temprano de cualquier nuevo acontecimiento al respecto.

THINGS YOU SHOULD KNOW

Reminder

The Scientific Staff Meeting will be held on Tuesday, October 23, at Tupper Meeting Room.

New Book Available at the Mini-Bookstore

Neotropical Rainforest Mammals - A Field Guide, Text by Louise H. Emmons, Illustrations by Francois Feer. Available at \$19.95.

To All People interested in Sustainable Rainforest Conservation

The vanishing of the rainforest, with all its far-reaching consequences, is a very big threat to the survival and quality of life in our planet. Therefore, everything possible should be done to try and stop the current destruction and to look for lasting solutions.

A few months ago, the EARN/BITNET Rainforest Network was created. Its purpose is to use the powerful capabilities of these electronic networks in order to exchange information and develop ideas, establish contacts, and evaluate government and NGO plans regarding rainforest protection. We try to emphasize the sustainability concept, not only looking at the ecological, but also at economic, social, and political aspects of rainforest destruction and protection. At this moment, people from Brazil, USA, Canada and Europe are participating, offering a multinational forum with different viewpoints. The main means of communication is the so-called Rainforest Network Bulletin, in which new developments and reactions of participants are included. In the future, we would like to have an interactive listserv-list.

If you are interested in participating, please E-mail a little description of who you are and what your special field of interest is (if any) to: ADEMOOR@HTIKUB5

E-Mail Course

Leopoldo Leon will give another course on Wednesday, October 24 at 2 p.m. in his office. All interested in participating should contact L. Leon, Tivoli.

ANNOUNCEMENTS

Bicycle Wanted

Men's ten-speed or lightweight "mountain bike", 22-23" frame. Contact David Zeh 56-6473 or Tupper Center mailbox.

New STRI Publications

- Castro, Gonzalo and Myers, J.P. "Validity of Predictive Equations for Total Body Fat in Sanderlings from Different NonBreeding Areas." *The Condor* 92: 205-209 (1990).
- Cole, Kathleen S. "Patterns of Gonad Structure in Hermaphroditic Gobies (Teleostei: Gobiidae)." *Environmental Biology of Fishes* 28: 125-142 (1990).
- Cole, Kathleen S. and Shapiro, D.Y. "Gonad Structure and Hermaphroditism in the Gobiid Genus *Coryphopterus* (Teleostei: Gobiidae)." *Copeia* 1990(4): 966-973 (1990).
- Green, Andrew J. "Determinants of Chorus Participation and the Effect of Size, Weight and Competition on Advertisement Calling in the Tungara Frog, *Physalaemus pustulosus* (Leptodactylidae)." *Animal Behaviour* 39: 620-638 (1990).
- DeVries, Philip J. and Dudley, Robert. "Morphometrics, Airspeed, Thermoregulation, and Lipid Reserves of Migrating *Urania fulgens* (Uraniidae) Moths in Natural Free Flight." *Physiological Zoology* 63(1): 235-251.
- Howard, Jerome J. "Infidelity of Leafcutting Ants to Host Plants: Resource Heterogeneity or Defense Induction?" *Oecologia* 82: 394-401 (1990).
- Jackson, Jeremy B.C. and Cheetham, Alan H. "Evolutionary Significance of Morphospecies: A Test with Cheilostome Bryozoa." *Science* 248: 579-582 (4 May 1990).
- Karr, James R. and Brawn, Jeffrey D. "Food Resources of Understory Birds in Central Panama: Quantifications and Effects on Avian Populations." *Studies in Avian Biology* 13: 58-64 (1990).
- Eberhard, William. "Imprecision in the Behavior of *Leptomorphus* Sp. (Diptera, Mycetophilidae) and the Evolutionary Origin of New Behavior Patterns." *Journal of Insect Behavior* 3(3): 327- (1990).
- Quintero A., Diomedes and Rodríguez, R. R. "New Species of *Typhoctes* from Panama (Hymenoptera: Typhoctidae)." *Annals of the Entomological Society of America* 83(1): 30-35 (1990).



In its capacity as a member of the Board of Directors of the Metropolitan Park, STRI donated funds to support the construction and installation of two types of signs: 1) announcements of park limits and regulations, 2) signs to educate and inform. This project was carried out with the collaboration of Alejandro Hernandez, chief, STRI gamewarden force. The signs were installed last week, and will help to inform the general public about the park ••• Como miembro del Patronato del Parque Metropolitano, el Instituto Smithsonian otorgó una donación al parque para la elaboración e instalación de dos tipos de letreros: 1) avisos sobre límites y reglamentación, 2) señales para concientizar e informar. Este proyecto contó con la colaboración de Alejandro Hernández, jefe de guardabosques de Barro Colorado. Los letreros fueron instalados la semana pasada, y ayudarán a informar al público sobre el parque.

(Foto: M.A. Guerra)

FROM OTHER SOURCES

Patient Notes • The Common Cold

At one time or another, you have probably had to miss work or cancel plans because of a cold. Everyone is familiar with the symptoms—runny nose, nasal congestion, postnasal drip, and sometimes cough, body aches, headaches, and fever.

What causes colds?

Viruses are the main culprits. This is important to remember, because there is still no effective treatment for the thousands of viruses that can cause cold symptoms. A few illnesses, such as sore throat or pneumonia, resemble viral infections but are caused by bacteria and can be treated. Thus if you have a sore throat, severe coughing or persistent fever, check with your doctor.

What should you do if you have a cold?

- Stay home
- Take appropriate doses of acetaminophen, aspirin, or ibuprofen.
- Use a vaporizer in your room
- Drink lots of fluids
- Get plenty of rest



When should you see a doctor?

- Severe diabetes, heart disease, or lung disease
- Severe pain in the chest, ear, stomach, or throat
- Worsening of symptoms after you have been getting better
- A new fever after the first 2 or 3 days
- Symptoms that continue unchanged for more than 10 days
- A cold that is much worse than usual

Why shouldn't you take an antibiotic for an uncomplicated cold?

- It will not be effective against viral infection
- It may cause an allergic reaction
- It may cause an annoying side effect, such as vaginal yeast infection, or a secondary infection, such as a difficult to treat pneumonia.

From Post Graduate Medicine

More on Recycling

Your cooperation is essential for the success of the project. Please implement the following steps as soon as you can, but not later than the end of next week.

- ▶ Obtain a container (cardboard box or trash can) and label it "paper for recycling".
- ▶ Place all white waste bond and computer paper in container.
- ▶ Remove all staples and paper clips before putting the paper in the recycling bin.
- ▶ Do not try to recycle glossy or coated paper, envelopes with windows, colored paper, newsprint or cardboard.

The janitors will periodically empty the containers into a central container, which will be collected and recycled. The money which STRI receives from this recycling effort will be put in a special account. Some suggestions on how this money will be used include employees activities, charitable donations and furthering other environmental efforts at STRI.

STRI LIBRARY NEW BOOK LIST

Atlas of Nearctic shorebirds on the coast of South America (RIG Morrison & RK Ross, 1989)

Ref QL679.M88 1989 v.1 & v.2 STRI.

Atmospheric pathways of sulphur compounds (DM Whelpdale; prepared by Monitoring and Assessment Research Centre of the Scientific Committee on Problems of the Environment, International Council of Scientific Unions (DM Whelpdale, 1978)

QH545.S9W56 1978 STRI.

The Effect of inorganic sediment on stream biota, by JR Gammon for the Water Quality Office of the Environmental Protection Agency (JR Gammon, 1970)

QH541.5.S7G34X 1970 STRI.

XV Congressus Internationalis Ornithologicus: abstracts (International Ornithological Congress (15th: 1970: The Hague), 1970)

QL671.I61 1970 STRI.

General catalogue of the Hemiptera (1927-1971)

QL521.G4X STRI.

Genes and embryos (DM Glover & BD Hames, eds., 1989)

QL955.G36 1989X STRI.

Geología, sedimentología y limnología de la Laguna Yalca: partido de Chascomus, provincia de Buenos Aires, República Argentina - por Nauris Vitauts Dangaus y Luis Hugo Dallasalda (1977)

QE231.D18 1977 STRI.

Guaymí grammar and dictionary, with some ethnological notes (ES Alphonse, 1956)

Ref PM3806.A45g 1956 STRI.

IFYGL physical data collection system: description of archived data - Jack Foreman; Center for Experiment Design and Data Analysis (J. Foreman, 1976)

QC875.2.I6F72 1976 STRI.

Inventory of data on contaminants in aquatic organisms - compiled by Fishery Data Centre, Fisheries Department, FAO (Food and Agriculture Organization of the United Nations. Fishery Data Centre, 1978)

SH174.F64 1978 STRI.

100 families of flowering plants - Michael Hickey & Clive King; with a foreword by S.M. Walters (M. Hickey, 1988)

QK495.A1H53 1988X STRI.

Progress report - Asian Vegetable Research and Development Center (1985, 1986)

SB320.8.A68A83 STRI.

Proyecto de desarrollo agroforestal de la zona de influencia del área metropolitana - [elaborado por la Dirección de Recursos Naturales Renovables, RENARE, del Ministerio de Desarrollo Agropecuario, MIDA, con la asistencia de la Unidad Regional de Asistencia Técnica, RUTA] (1985)

SD409.P96 1985 STRI.

Responses of teleost fish to environmental stress, by L.S. Smith [and others. Prepared] for the Federal Water Quality Administration, Environmental Protection Agency (University of Washington. Fisheries Research Institute, 1971)

QL639.1.W37 1971X STRI.

A Selected bibliography of acoustics in fisheries research and related fields (SC Venema, comp., 1985)

Z5973.S6V45 1985 STRI.

Textbook of pollen analysis (K. Faegri & J. Iversen, 1989)

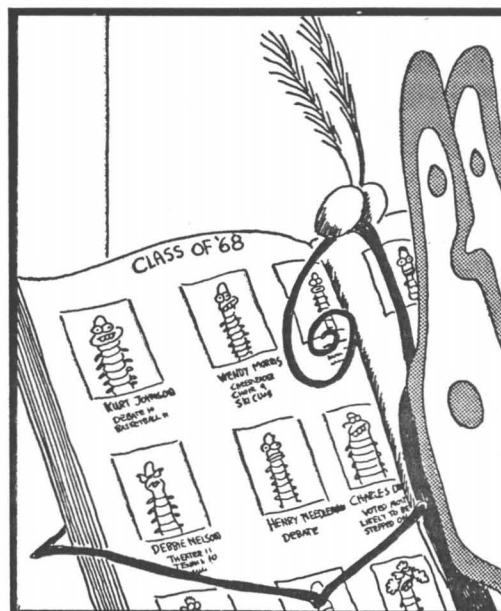
QE993.F3 1989X STRI.

Vegetation of the coast of Ecuador and Peru and its relation to the Galapagos Islands (HK Svenson, 1946)

QK938.C6S84 1946 STRI.

Worldwide conservation: proceedings of the Symposium on Biosphere Reserves - congress host, World Wilderness Leadership Foundation; symposium co-sponsor, UNESCO MAB Secretariat ... [et al.]; edited by WP Gregg, Jr., SL Krugman, JD Wood, Jr. (Symposium on Biosphere Reserves (1987: Estes Park, Colo.), 1989)

QH75.A1S989 1987 STRI.



Butterfly yearbooks