

# STRI newsletter

DECEMBER 15, 1989

SMITHSONIAN TROPICAL RESEARCH INSTITUTE, Apartado 2072, Balboa, Panamá

No. 51

## SEMINARS

### *Auditorium, Tupper Center*

Tuesday, December 19, noon seminar speaker is Thomas J. Smith, Department of Fisheries and Aquaculture, University of Florida.

*The roles of grapsid crabs in tropical, tidal forests: or, seeing the forest instead of the trees.*

### Abstract

Tidal forests (mangroves) are a dominant vegetation type around much of the world's tropical coastline. Although relatively simple in terms of species composition compared to tropical rainforest, mangroves are complex in their ecology. Recent studies in Australia have revealed a crucial role for grapsid crabs (Brachyura: Grapsidae) in mangroves. Grapsids are voracious consumers of the propagules of many mangroves, especially the genus *Avicennia*. Differential consumption of *Avicennia* seedlings become established in the forest, thus influencing forest structure. Burrowing by grapsids is also important. When crabs were experimentally removed from a *Rhizophora* forest concentrations of sulfide and ammonium in the soil increased dramatically. Furthermore, forest productivity decreased and the trees failed to reproduce. It is suggested that grapsid crabs play a keystone role in Australian mangrove forest ecosystems by influencing forest structure and pathways of nutrient and energy flow.

There are be no seminars scheduled for Tuesday December 26, 1989 and Tuesday, January 2, 1990 due to holidays.

## LAST MINUTE NOTICE

- The green 1989 decals for access to restricted areas are valid only until December 15. Facilities Management is taking action to provide new ones as soon as possible. Call Dora Justo for questions at 52-2704 or 62-3133.

## PEOPLE

### Arrivals

- December 18, Jacqueline Giacalone and G. Willis.
- December 19, Stephen Mulkey.

### On leave

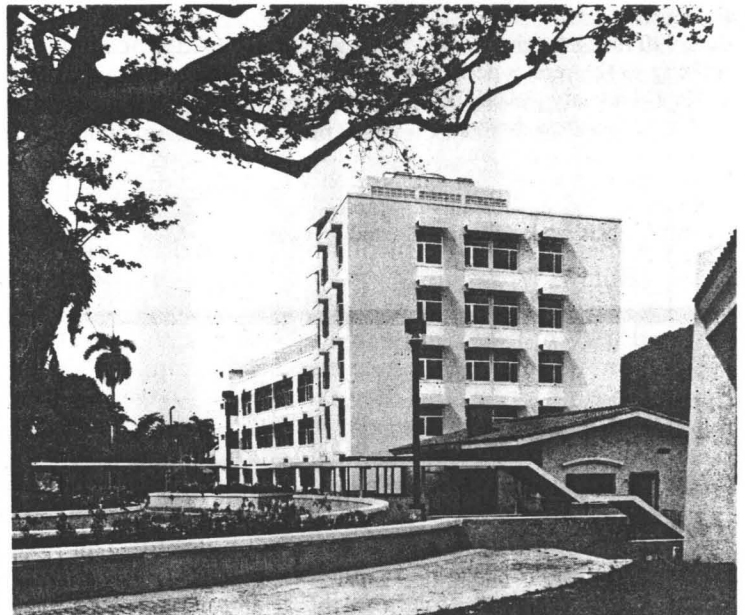
Hely Andrade, December 18-22.

Carl Hansen, December 21, 1989 - January 3, 1990.

Stanley Rand, December 21, 1989 - January 6, 1990.

David Roubik, November 22 - December 23.

Carmen Sucre, December 18-22.



### Move to Tupper Center begins

Move to the Earl Silas Tupper Research and Conference Center starts Monday, December 18.

- December 18-19, Dolores Piperno, Annette Aiello, Henk Wolda and Henry Stockwell; America Staff and the Tivoli herbarium.
- December 20, Mireya Correa, Noris Salazar and Liz Stockwell; Georgina de Alba, Maria Luz Jimenez, Argelis Roman and Gloria Zelaya, Office of Education.
- December 21, Raineldo Urriola and Una Smith.

To call anyone at Tupper Center, please call 62-3133.

**ANNOUNCEMENTS****At the Smithsonian Institution**

Diana D. Duncan was appointed Director of Development Activities at the Office of Membership and Development. She will be responsible for three new units being formed within the OMD: Corporation and Foundation Activities, Individual Giving and Development Services to Smithsonian Bureaus.

**AAA/1990-91 Science and Engineering Fellowships**

The American Association for the Advancement of Science will sponsor five science and engineering fellowship programs.

- Congressional Science and Engineering Fellows Program
- Science, Engineering and Diplomacy Fellows Program
- Science, Arms Control, and National Security Fellows Program
- Mass Media Science and Engineering Fellows Program
- Environmental Science and Engineering Fellows Program

*For additional program information and applications, write: Fellowship Programs, American Association for the Advancement of Science, 1333 H Street, N.W., Washington D.C. or call (202) 326-6600 • Minorities and persons with disabilities are especially encouraged to apply.*

Poster can be seen at the Office of Education, STRI

**From the Photolab**

Carl Hansen would like to solicit slides showing the beauty of tropical scenes, plants and animals, attractive insects and fishes for the Multi-Image slide show at the entrance of the Tupper Center.

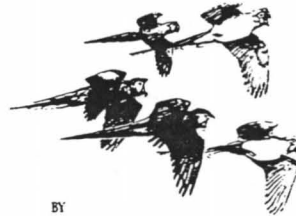
**Fiesta de Navidad**

El Coffee Club de Naos • tiene el placer de invitarle • a su Fiesta de Navidad el día viernes 22 a las 4:30 p.m. en el Bohío de Naos. Se solicita una contribución de \$5.00.

**From the minibookstore**

A GUIDE TO THE---  
**BIRDS OF PANAMA**

with Costa Rica,  
Nicaragua, and Honduras



BY  
ROBERT S. RIDGELY  
JOHN A. GWYNNE

• *Phytolith Analysis. An Archaeological and Geological Perspective*, by Dolores Piperno. San Diego: Academic Press. \$53.00.

• *Tropical Renaissance North American Artists Exploring Latin America, 1839-1879*, by Katherine Emma Manthorne • The author is Assistant Professor of Art History at the University of Illinois in Urbana-Champaign. Her *Creation and Renewal: Views of Cotopaxi*, by Frederic Edwin Church, was published by Smithsonian Institution Press. 8 color, 100 b&w illus. 9x10 256pp. LC89-6199. \$20.00

• *Perceptions of Animals in American Culture*, ed. by R.J. Hoadge • The author serves as chief, Public Affairs Office at the Smithsonian Institution's National Zoological Park, Washington D.C. He edited *What Everyone Should Know*, and co-edited *Animal Intelligence: Insights Into the Animal Mind* (both S.I. Press.) 25 line drawings, 6 charts 6 x 9 160pp. LC 89-600054. \$10.00

• *Sharks in Question*, by Victor G. Springer and Joy P. Gold • V. Springer is a curator in the Dept. of Vertebrate Zoology, National Museum of Natural History, author of numerous studies on sharks and other fish • J.P. Gould is a Technical Information Specialist at the Dept. of Vertebrate Zoology and has written several monographs for the general public ISBN 0-87474-877-1. \$12.00

• *Birds of Panama, with Costa Rica, Nicaragua and Honduras*, by Robert S. Ridgely and John A. Gwynne. Second Edition. Princeton. Promotional price: \$35.00