



SEMINAR

We invite visitors to give a seminar during their stay at STRI. Persons wanting to do so, should call DONALD WINDSOR, at Ancon.

On Tuesday, June 10, at 12 noon in the Ancon Conference Room, we will present 2 videos given to STRI by P. DeVries:

- "Sirau: A Tidal Forest"
- "Mangrove Ecology: Borneo"

ARRIVALS & DEPARTURES

June 7 - Arriving, STANLEY TYLER, to work with R. Stallard on a study of the soils of Barro Colorado Island.

June 8 - Arriving, J.B. WEILEPP, SI Office of Personnel Administration, for one week. See visit schedule below.

June 10 - Arriving DENNIS RASMUSSEN, Animal Behavior Research Institute, with students for a field course on primate social behavior. They will be in Panama until August 28.

PERSONNEL NEWS

-Recently, appointments for AGAPITO GONZALEZ, AUDREY SMITH and RICARDO THOMPSON were changed from temporary to permanent.

-During his visit next week, J.B. WEILEPP will be available to discuss personnel matters with employees at the different facilities. His schedule is as follows:

Monday: Naos Lab & Shop: 1 - 3 pm.

Tuesday: Galeta

Thursday: BCI

Friday: 8 - 12 Tivoli & Ancon.

-Recientemente, los nombramientos de AGAPITO GONZALEZ, AUDREY SMITH y RICARDO THOMPSON fueron cambiados de temporal a permanente.

-Durante la próxima semana, J.B. WEILEPP, de la Oficina de Personal de Washington, estará disponible para reunirse con los empleados según el siguiente itinerario:

Lunes: Naos 1 - 3 p.m.

Martes: Galeta

Jueves: BCI

Viernes: 8 - 12: Tivoli y Ancón.

CALENDAR

JUNE 1986						
S	M	T	W	T	F	S
1	2	3	4	5	6	7
8	9	10	11	12	13	14
15	16	17	18	19	20	21
22	23	24	25	26	27	28
29	30					

June 4 - 7: ROBERT HOFFMANN, director of the National Museum of Natural History, visits STRI.

June 6 - Iguana Management Project begins an 8-10 week statistics course for students in the project, to meet Wednesdays and Fridays pm, in the Ancon Conference Room.

June 10 - No scientific staff meeting. Postponed to the following week.

June 17 - Scientific staff meeting at 9:30 a.m. in the Ancon Conference Room.

FROM THE PHOTO LAB

CARL HANSEN will be on leave from June 20 - July 14. In order to ensure that the Photo Department continues to function effectively the following work schedule will be observed during his absence.

MARCOS GUERRA will shoot photos on Mondays or Tuesdays. Wednesday through Friday will be reserved for the processing of film and printing. Following this schedule, color film brought in for precessing by Wednesday afternoon can be returned by the following Monday.

MONDAY	TUESDAY	WEDNESDAY	THURSDAY	FRIDAY
8:00 am	8:00 am	8:00 am	8:00 am	8:00 am
Shoot film	Shoot film	Process B&W	Process color	Print B & W
12:00	12:00	12:00	12:00	12:00
12:30	12:30	12:30	12:30	12:30
Shoot film	Shoot film	Process B&W	Print B&W	Clean Machin.
4:30	4:30	4:30	4:30	4:30

OIL SPILL UPDATE

Clean-up operations of the recent oil spill that reached Galeta are continuing, and the Refinery reports that 40,000 barrels have been recovered. STRI is collaborating with other institutions involved in following-up the effects of the spill.

LIBRARY NEWS

A special plea from the Library... The Proceedings of the 5th International Coral Reef Congress, Tahiti, French Polynesia has just been published for general distribution at a hefty price. The STRI staff that attended is requested to contact the Librarian if they are willing to donate their copy to the STRI collection.

LIBRARY NEWS

New books:

BOTANICAL LATIN: HISTORY, GRAMMAR, SYNTAX, TERMINOLOGY, AND VOCABULARY
(William Thomas Stearn, 1983) QK 10 S79 STRIREF

CRC HANDBOOK OF TABLES FOR PROBABILITY AND STATISTICS (William H. Beyer,
editor, 1968) QA 276.25 B48 STRIREF

CATALOG OF HYMENOPTERA IN AMERICA NORTH OF MEXICO (Karl V. Krombein et al,
editors, 1979) QL 567.1 ALC37 STRI

CATALOGO DE LA COLECCION DE CODICES DE LA BIBLIOTECA DE ALFONSO CASO
(Maria de los Angeles Ojeda Diaz, 1980) F 1219.5 O39 STRI

COMPACT NUMERICAL METHODS FOR COMPUTERS: LINEAR ALGEBRA AND FUNCTION
MINIMISATION (J.C. Nash, 1979) QA 184 N25 STRI

ECOLOGY OF ROCKY COASTS: ESSAYS PRESENTED TO J.R. LEWIS (P.G. Moore and R.
Seed, editors, 1986) QH 541.5 C65E27 STRI

ENERGETICS AND TRNASPORT IN AQUATIC PLANTS (John A. Raven, 1984) QK916R38 STRI

ENCYCLOPEDIA OF PLANT PHYSIOLOGY vol. 18 (A. Pirson, and M.H. Zimmermann,
editors, 1983) QK711.2 E5 STRI REF

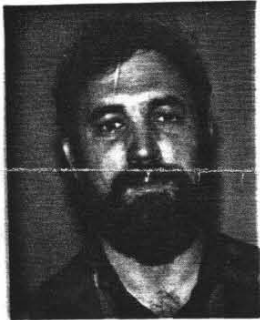
INSECT ULTRASTRUCTURE (Robert C. King and Hiromu Akai, editors, 1982)
QL494 I49 STRI

NATURAL SELECTION IN THE WILD (John A. Endler, 1986) QH 375 E53 STRI

PATTERN FORMATION: A PRIMER IN DEVELOPMENTAL BIOLOGY (George M. Malacinski,
editor, 1984) QH 491 P38 STRI

TROPICAL ZOOPLANKTON (H.J. Dumont and J.G. Tundisi, editors, 1984)
QL 143 T67 STRI

NEW STRI I. D.'S.



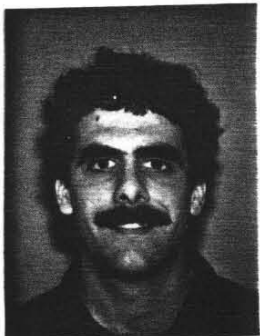
RAYMOND PETERSON
GALETA NAOS



MICHAEL KELLER
B.C.I.



HOWARD LASKER
NAOS SAN BLAS



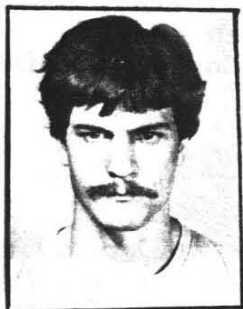
DANIEL BRAZEAU
NAOS SAN BLAS



GEROGE BRUNO
SAN BLAS



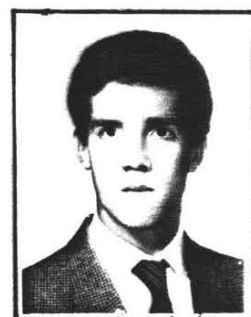
PAUL WELDON
NAOS



KYLE G. SUMMER
NAOS TABOGA



MANUEL GUARIGUATA
B.C.I.



SANTIAGO MADRIÑAN
B.C.I.