

PLATE 8

Exogonita oculata, new genus, new species (A 125)

- a. Anterior end through setiger 4, in dorsal view, x 122.
- b. Inferiormost acicular seta from postmedian parapodium, x 358, and its distal end enlarged, x 820.
- c. Superiormost acicular seta from postmedian parapodium, x 358, and its distal end enlarged, x 720.
- d. Composite spiniger, in lateral view, x 358.
- e. Composite falciger in lateral view, x 358, and its tip enlarged, x 720.

Langerhansia anoculata, new species (Ch 103)

- f. Anterior end through setiger 8, in dorsal view, x 69.
- g. Parapodium 10, in frontal view, x 166.
- h. Composite falciger from an inferior position, in lateral view, x 350.
- i. Superiormost spiniger, in lateral view, x 350, and its tip enlarged, x 690.

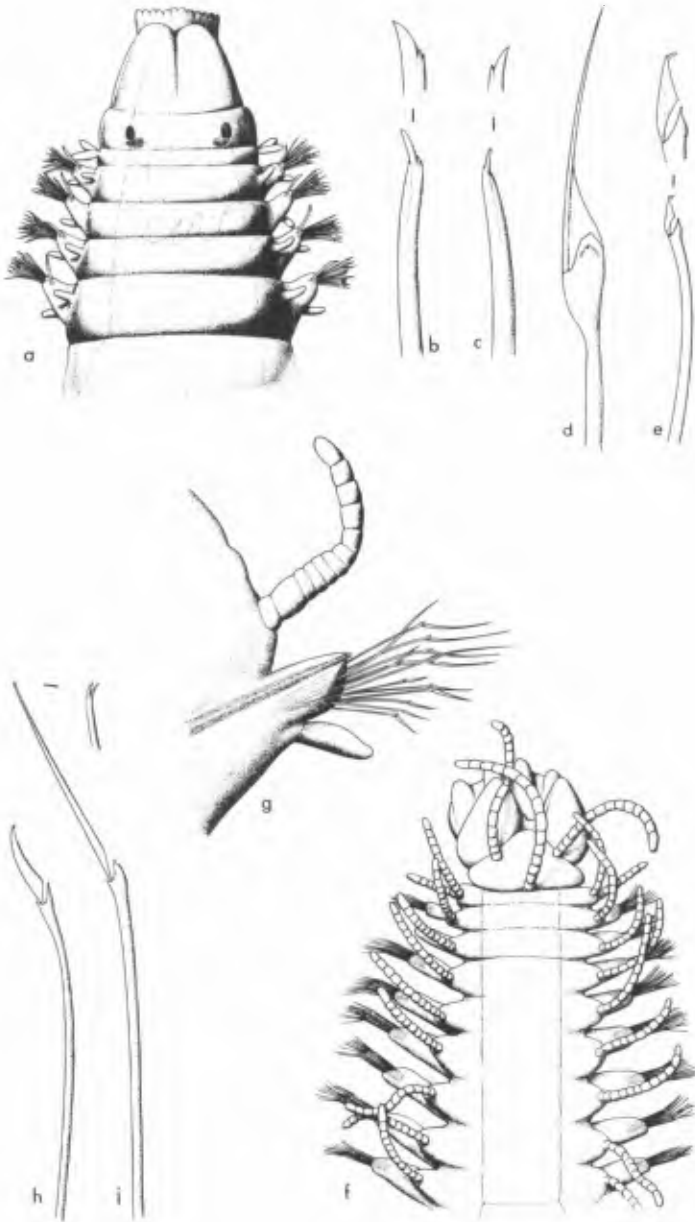
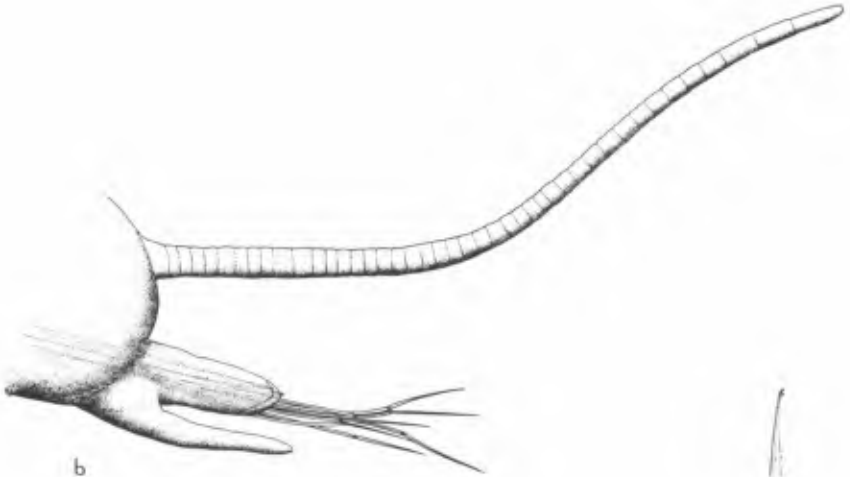


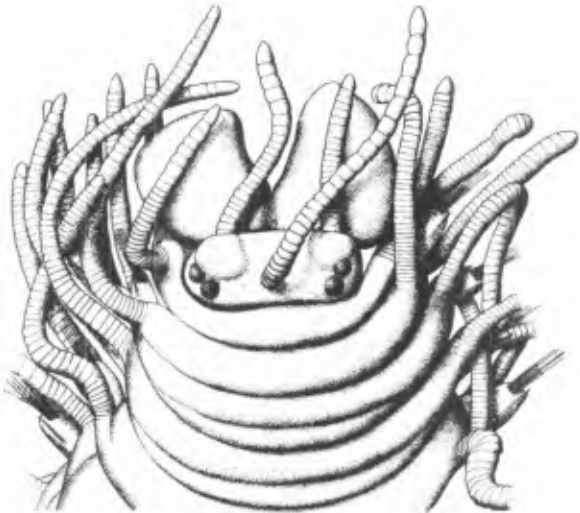
PLATE 9

Typosyllis tegulum, new species (Ch 89)

- a. Anterior end including first four setigers, in dorsal view, x 46.
- b. Anteromedian parapodium, in posterior view, x 46.
- c. Composite falciger from anteromedian parapodium, in lateral view, x 189.



b



a



c

PLATE 10.

Nothria textor, new species (A 118)

- a. Anterior end through setiger 7, in dorsal view, x 56.
- b. Mandible, in dorsal view, x 56.
- c. Maxillae, in dorsal view, x 56.
- d. Composite falciger from first parapodium, x 305.
- e. Subacicular hooded hook, from median parapodium, x 98.
- f. Composite falciger from second parapodium, x 305.
- g. Slender capillary seta from second parapodium, x 305.
- h. Furcate seta from second parapodium, x 305.
- i. Distal end of an aciculum, x 305.
- j. Limbate seta from an anterior parapodium, x 305.
- k. Composite falciger from a far posterior parapodium, x 305.

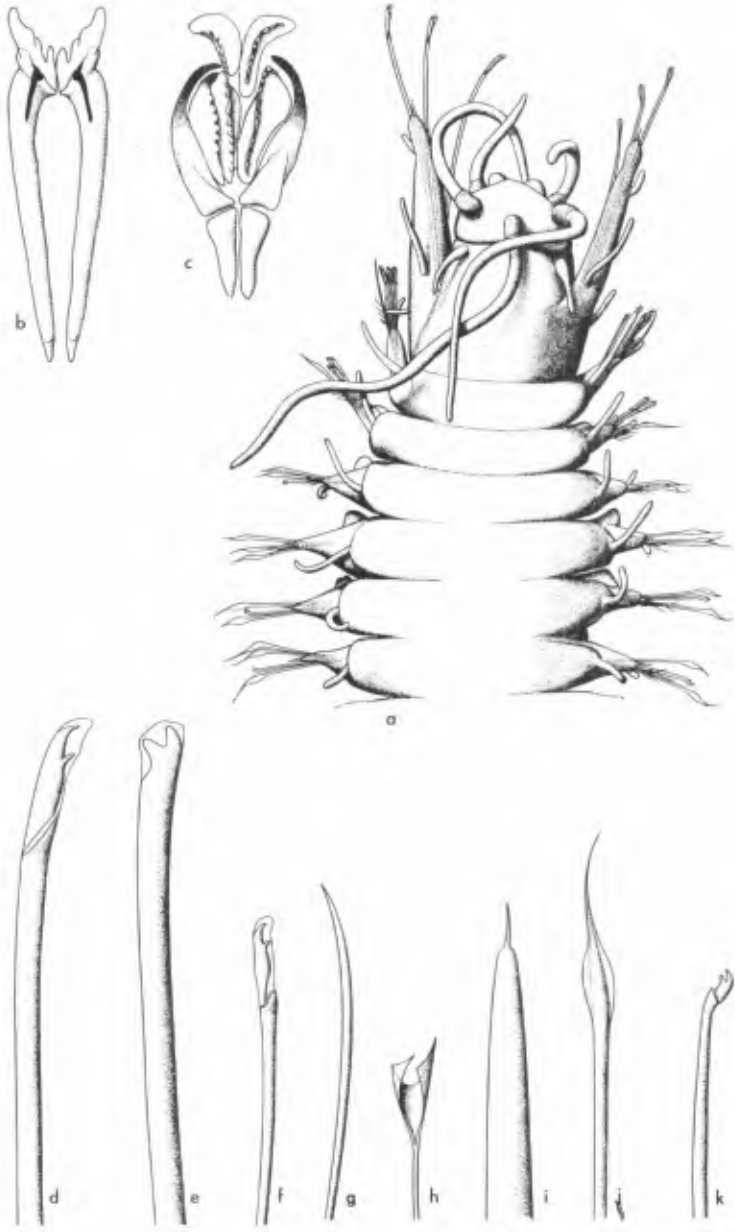


PLATE 11

Ninoe brevipes (McIntosh), new combination (Ch 87)

- a. Branchial parapodium in anterior view, x 78.

Ninoe dibranchia, new species (Ch 87)

- b. Composite hooded hook from anterior parapodium, x 1120.
c. Simple hooded hook from a posterior parapodium, x 1120.

orbiniid, unknown genus and species (OO2)

- d. Anterior end through thoracic and first abdominal segment, in dorsal view, x 32.
e. Distal end of thoracic seta, x 280.
f. Distal end of furcate seta from a thoracic notopodium, x 670.

Capitella aberranta, new species (A 124)

- g. Anterior end through second setiger, in dorsal view, x 94.
h. Transverse row of modified notosetae from setiger 8, x 200.

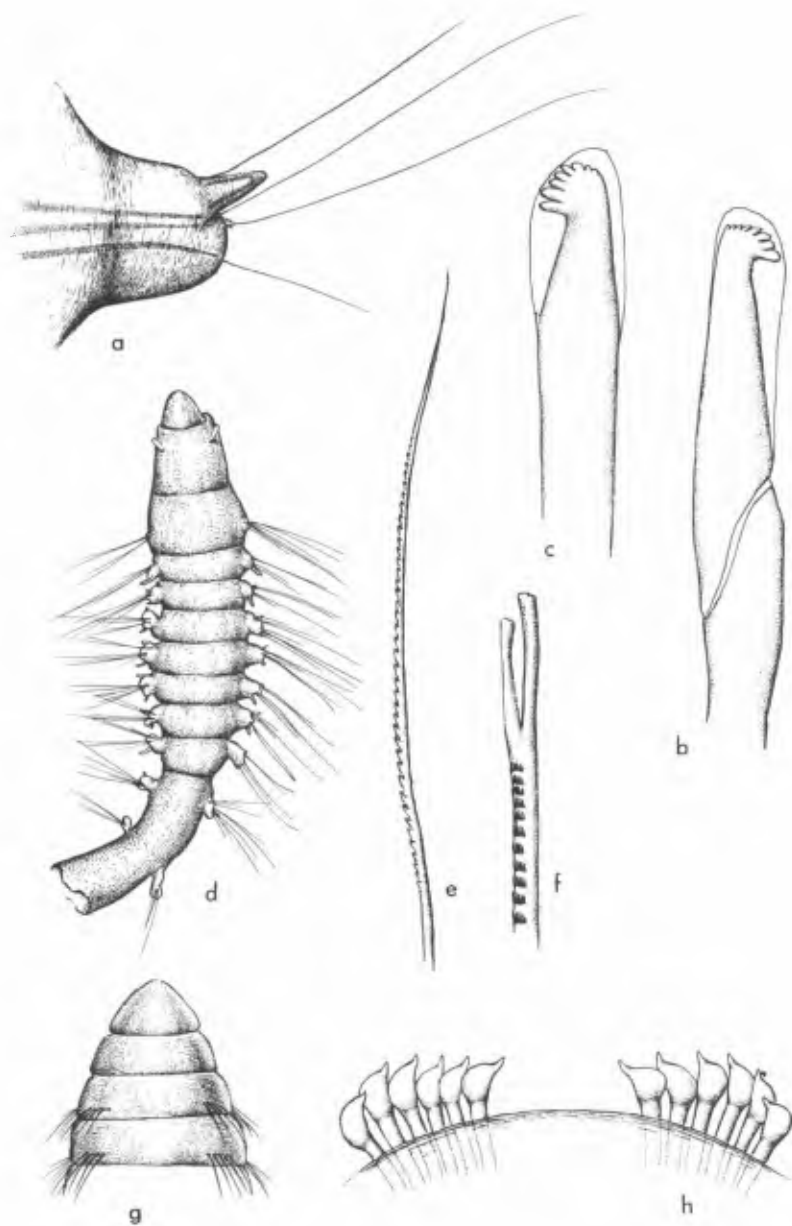
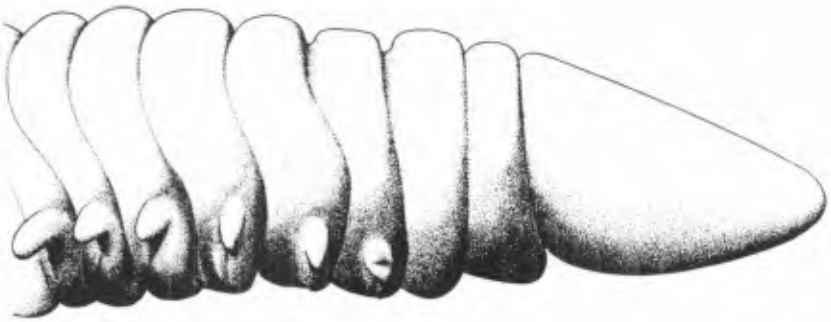


PLATE 12

Haematoleptes leaenae, new species (Ch 87)

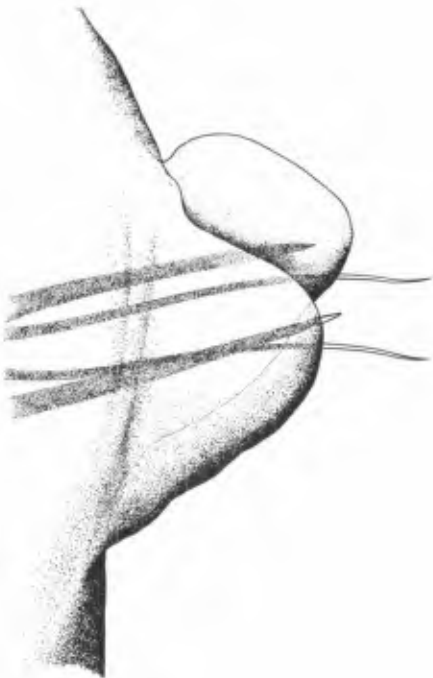
- a. Anterior end, in right lateral view, x 87.
- b. Parapodium from anterior third of body, in anterior view, x 232.
- c. Maxillae from right side, in full view, x 1600.
- d. Mandibles and maxillae, in normal position, showing relations of carriers, unpaired piece and distal maxillae, x 232.



a



c



b



d

PLATE 13

Aedicira parva, new species (A 73)

- a. Anterior end, in left lateral view, x 40.
- b. Long slender seta, x 600.
- c. Short seta, x 600.

Aricidea neosuecica Hartman (F 1)

- d. Anterior end, in dorsal view, x 35.
- e. Distal end of notoseta, x 600.
- f. Distal end of posterior neurospine, x 600.

Aricidea tetrabanchia, new species (A 73)

- g. Anterior end in dorsal view, x 35.
- h. Anterior end in ventral view, x 35.
- i. Posterior end with pygidial processes, x 35.
- j. Distal end of pointed neuroseta, x 425.
- k. Distal end of uncinial spine, x 425.

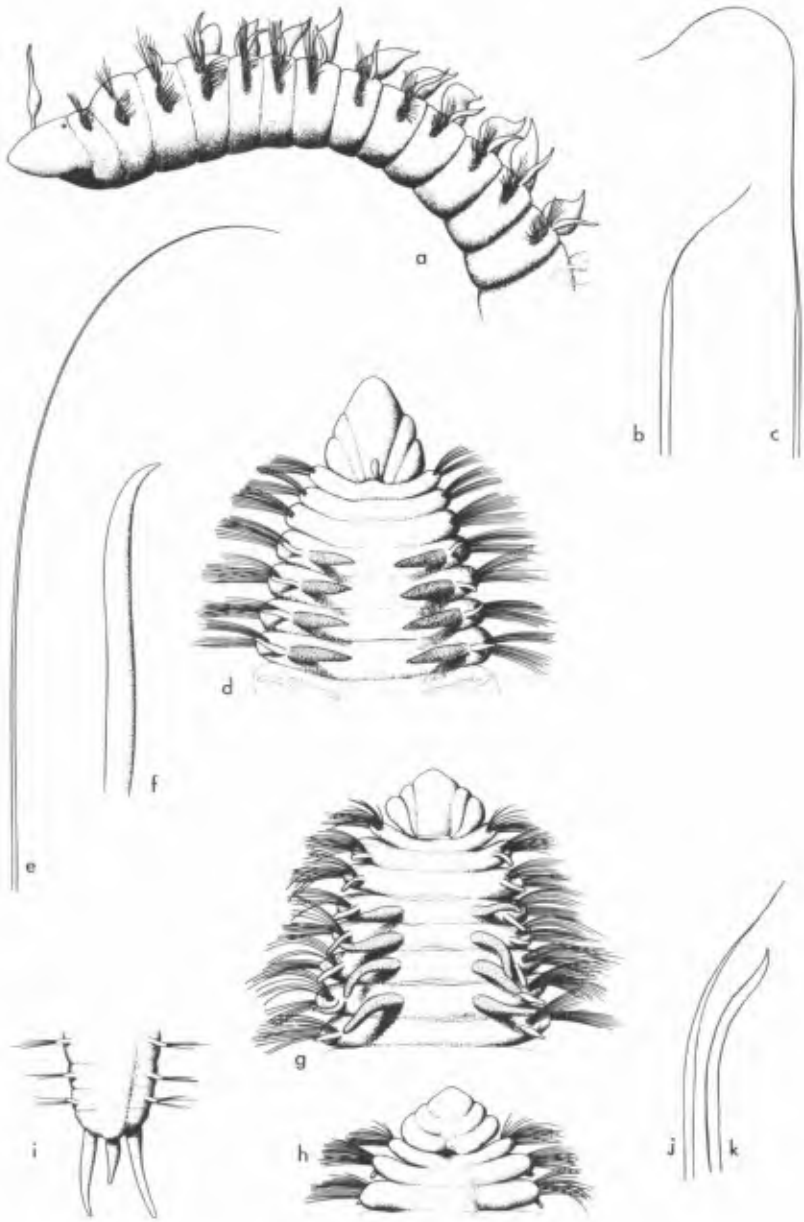


PLATE 14

Paraonides monilaris, new species (A 126)

- a. Anterior and middle regions of female, in dorsal view, x 45.
- b. A postmedian parapodium, showing dorsal cirrus and setal fascicles, x 463.
- c. Posterior end from another specimen (A 155), x 36.

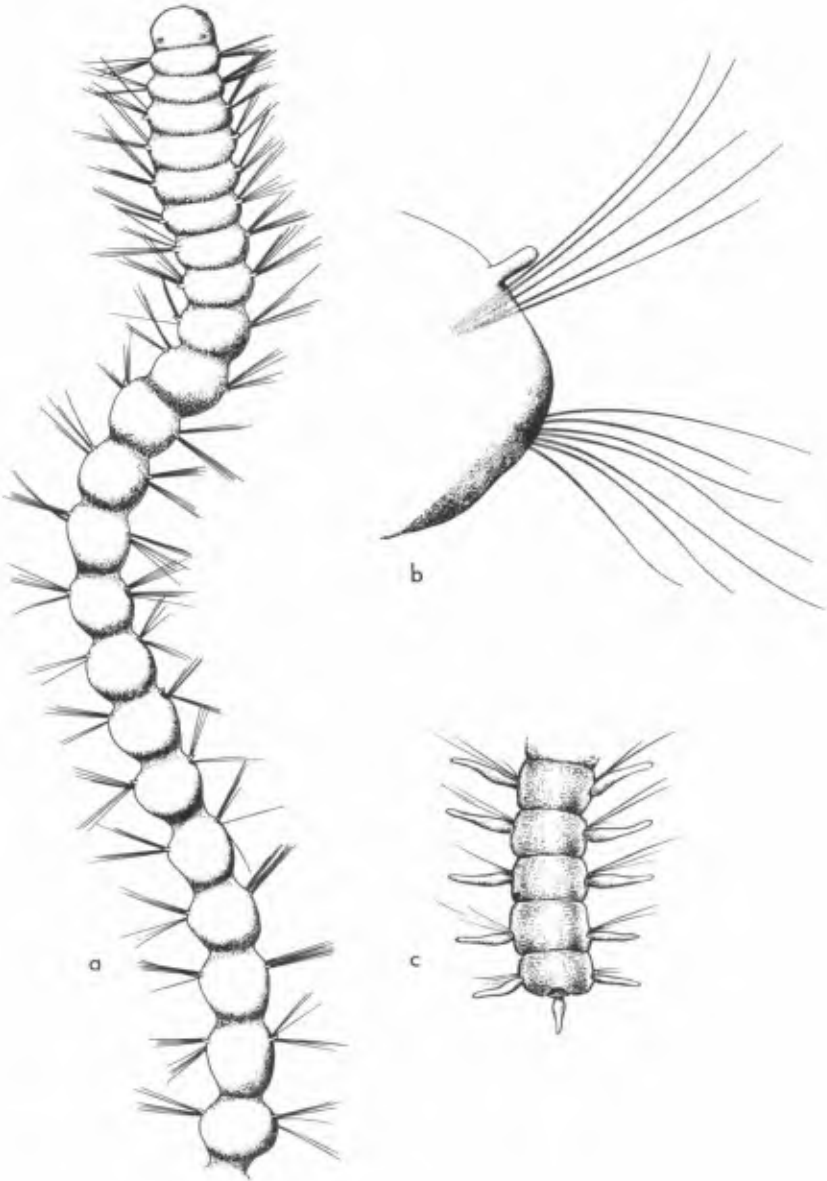


PLATE 15

Tharyx nigrorostrum, new species (A 125)

- a. Anterior and middle regions of mature female, in dorsal view (proboscis everted), x 56.
- b. Posterior end of a smaller individual, in dorsal view, x 56.

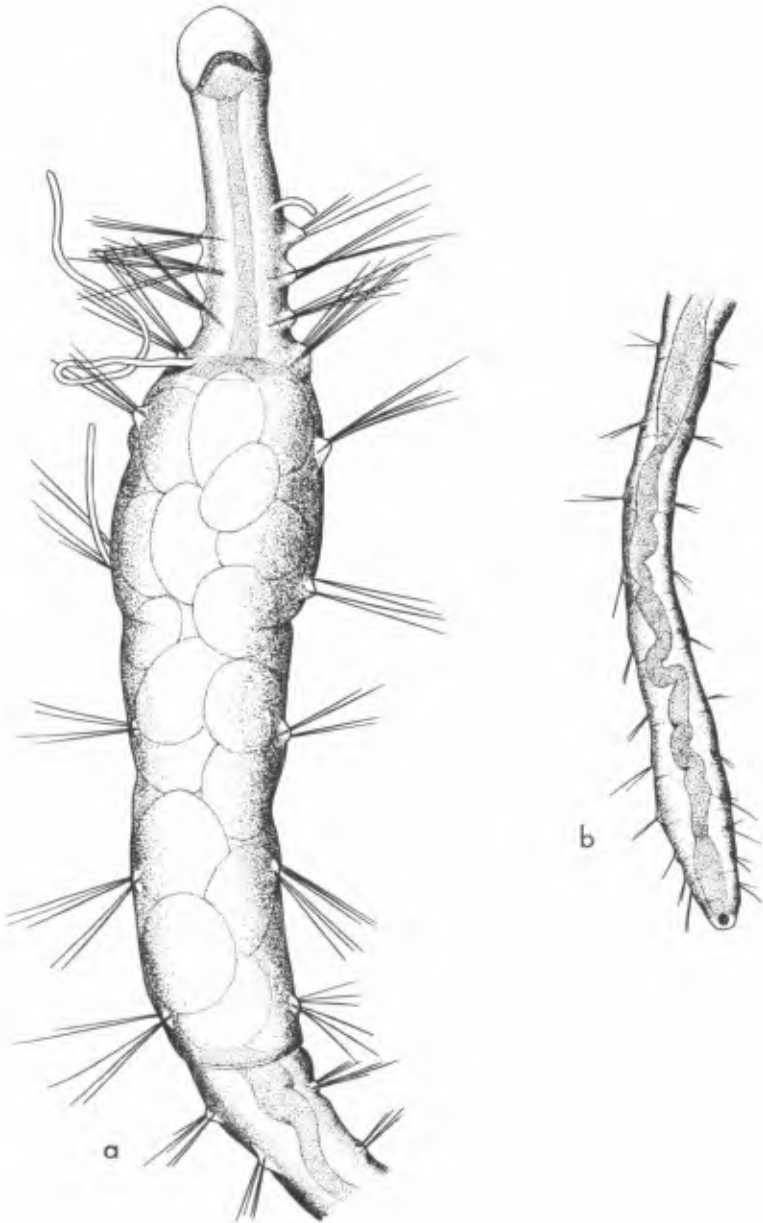


PLATE 16

Fauveliopsis brevis (Hartman), new combination (A 64)
Entire animal, in left lateral view, x 24.



PLATE 17

Fauveliopsis scabra, new species (Ch 84)

- a. Entire animal in left lateral and ventral views, x 40.
- b. A setal fascicle from a posterior neuropodium, showing thick superior and slender inferior setae, x 524.

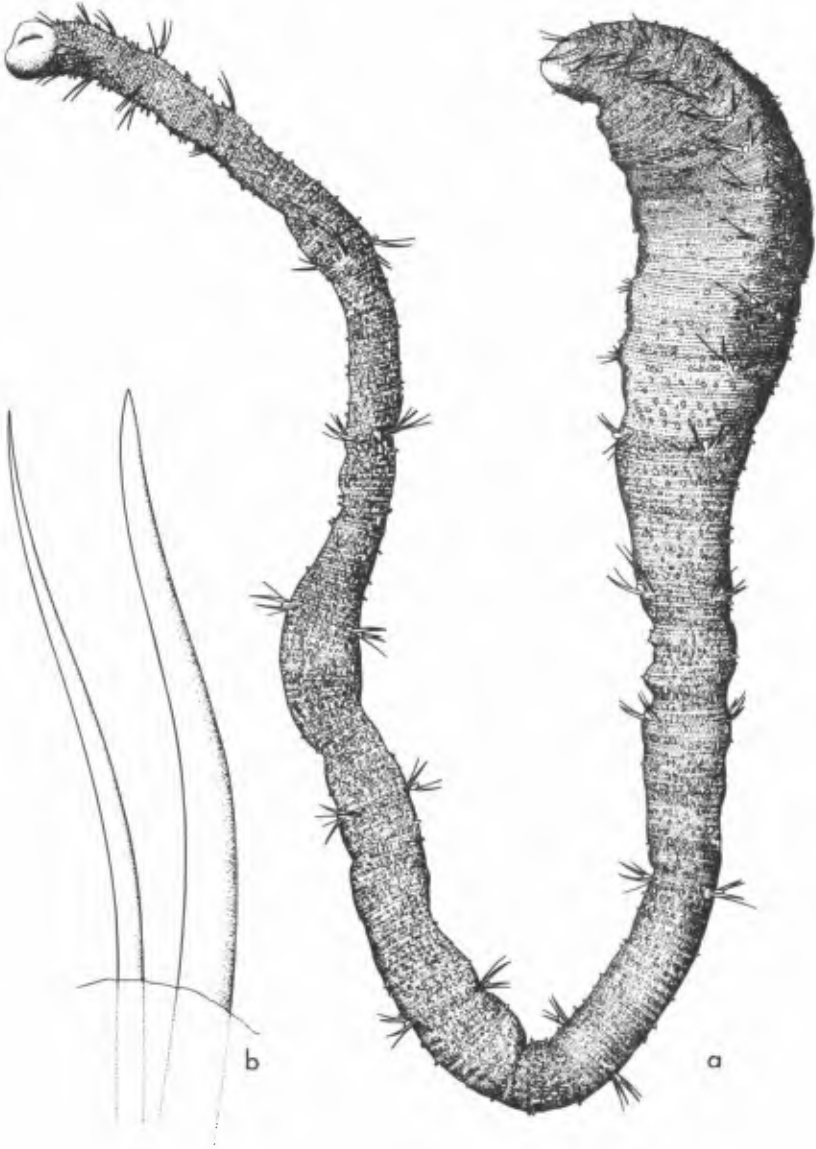


PLATE 18

Flabelligella cirrata, new species (Ch 105B)

- a. Entire body except tail, in right lateral view, x 25.
- b. Composite falciger from a posterior neuropodium, x 1500.
- c. Simple, marginally serrated notoseta from a posterior parapodium, x 1500.

Flabelligera sp. (A 119)

- d. Distal end of a postmedian neuroseta, with falcate tip, widely spaced articles (the more basally closely spaced transverse bars are not shown), x 1500.

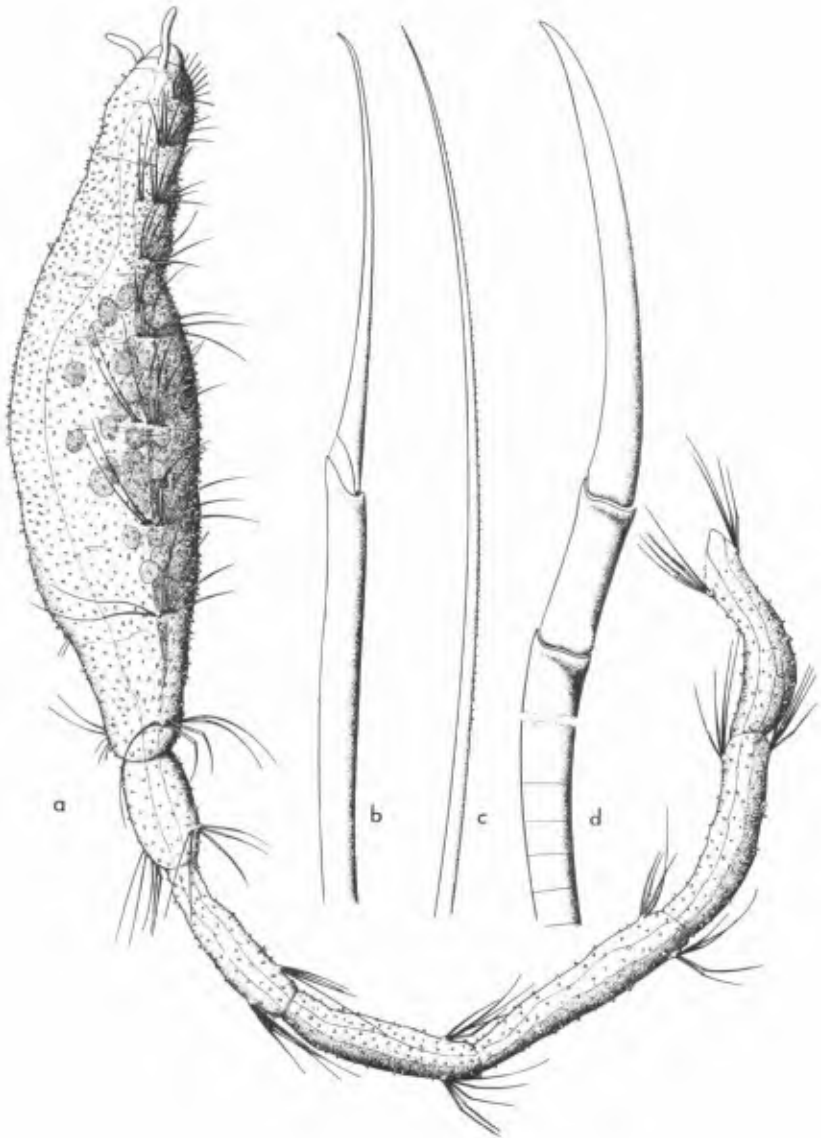


PLATE 19

Neolipobranchius glabrus, new genus, new species (JJ 1)
Entire animal, in right lateral view, x 84.



PLATE 20

Scalibregmella antennata, new genus, new species (A 120)

- a. Anterior end with pharynx everted, in dorsal view, x 28.

Scalispinigera cirrata, new species (Ch 103)

- b. Anterior end, in dorsal view, x 29.
- c. Sixth parapodium from right side, in anterior view, x 94.
- d. A composite spiniger from sixth parapodium, x 940.

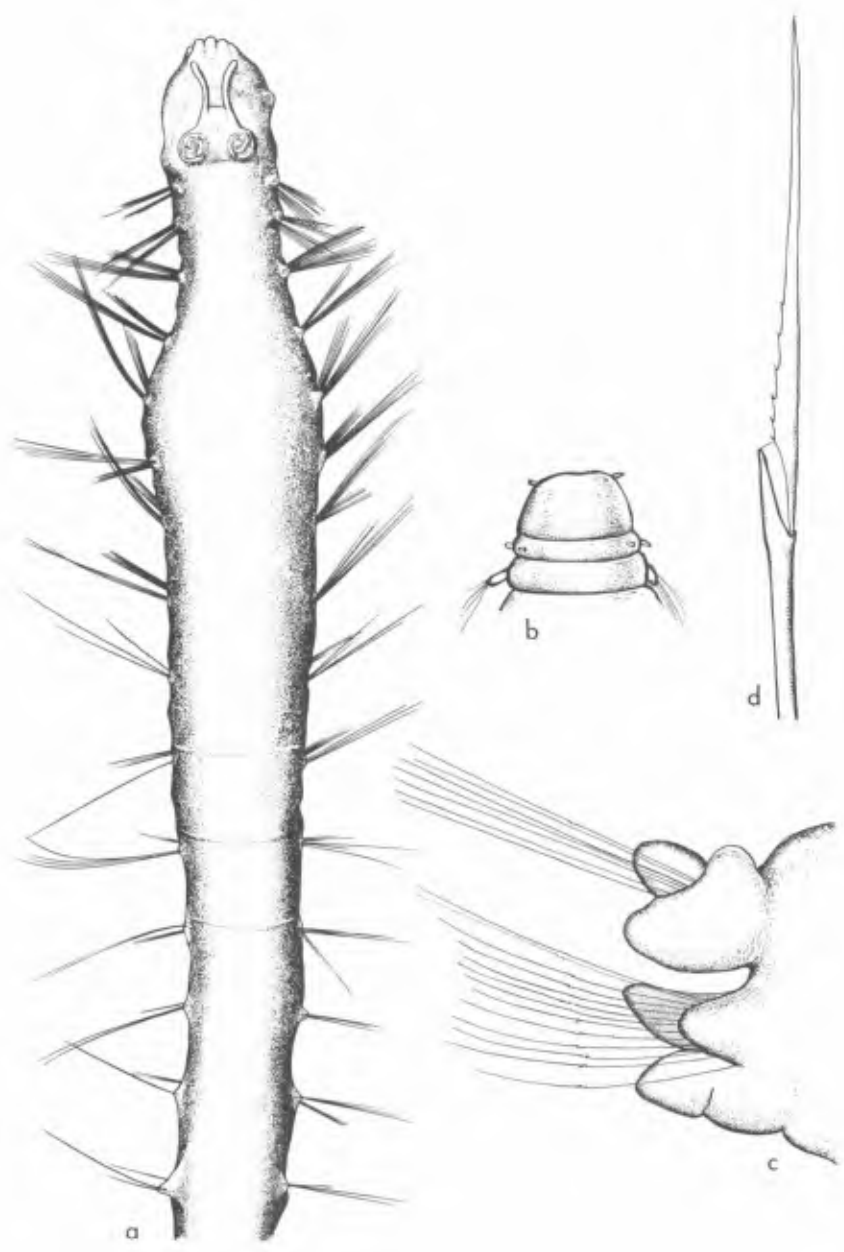


PLATE 21

Ammotrypane aulogastrella, new species (A 72)

- a. Entire body in left lateral view, x 5.5.
- b. Anterior end through fifth setiger, or first branchial segment, in ventral view, x 20.
- c. Posterior end including last two setigers, in left lateral view (marginal papillae have fallen off), x 20.



PLATE 22

Notoproctus abyssus, new species (A 126)

- a. Anterior end through seven setigers, in right lateral view, x 31.
- b. Posterior end, in right lateral view, x 31.
- c. One of two rostrate uncini from first setiger, x 900.
- d. One of four rostrate uncini from seventh setiger, x 900.

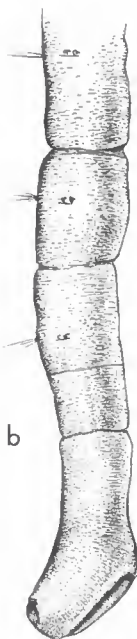


PLATE 23

Boguella ornata, new genus, new species (A 119)

- a. Anterior end through fourth setiger, in dorsal view, x 24.
- b. Anterior end through ninth setiger, in ventral view, x 24.
- c. Posterior end including last three segments with sympodial setae, and terminal pygidial papillae, x 24.
- d. Terminal end of a sympodial seta, x 200.
- e. Portion of long seta, enlarged, x 600.
- f. Neuropodial uncinus, in lateral view, x 1440.
- g. Neuropodial uncinus, in frontal view, x 1440.

Boguea enigmatica Hartman (from Bogue Sound, North Carolina)

- h. Neuropodial uncinus, in lateral view, x 1570.
- i. Neuropodial uncinus, in frontal view, x 1570.

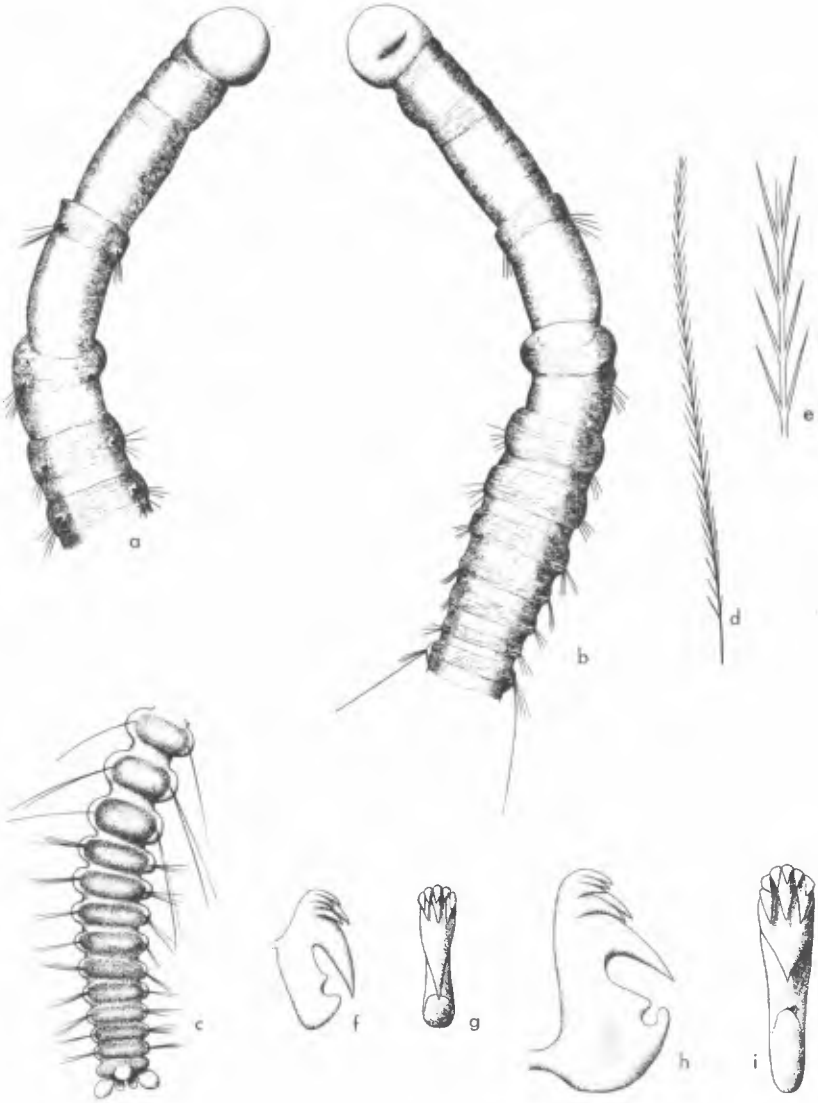


PLATE 24

Phalacrostemma elegans Fauvel (A 70)

- a. Slender opercular seta with curled tip, x 82.
- b. Portion of seta near base, x 245.
- c. Portion of seta near tip, x 245.
- d. Abdominal uncinus, in lateral view, x 1290.
- e. Abdominal uncinus, in frontal view, x 1290.
- f. One of two opercular spines, x 86.
- g. Nuchal hook from dorsal end of operculum, x 86.

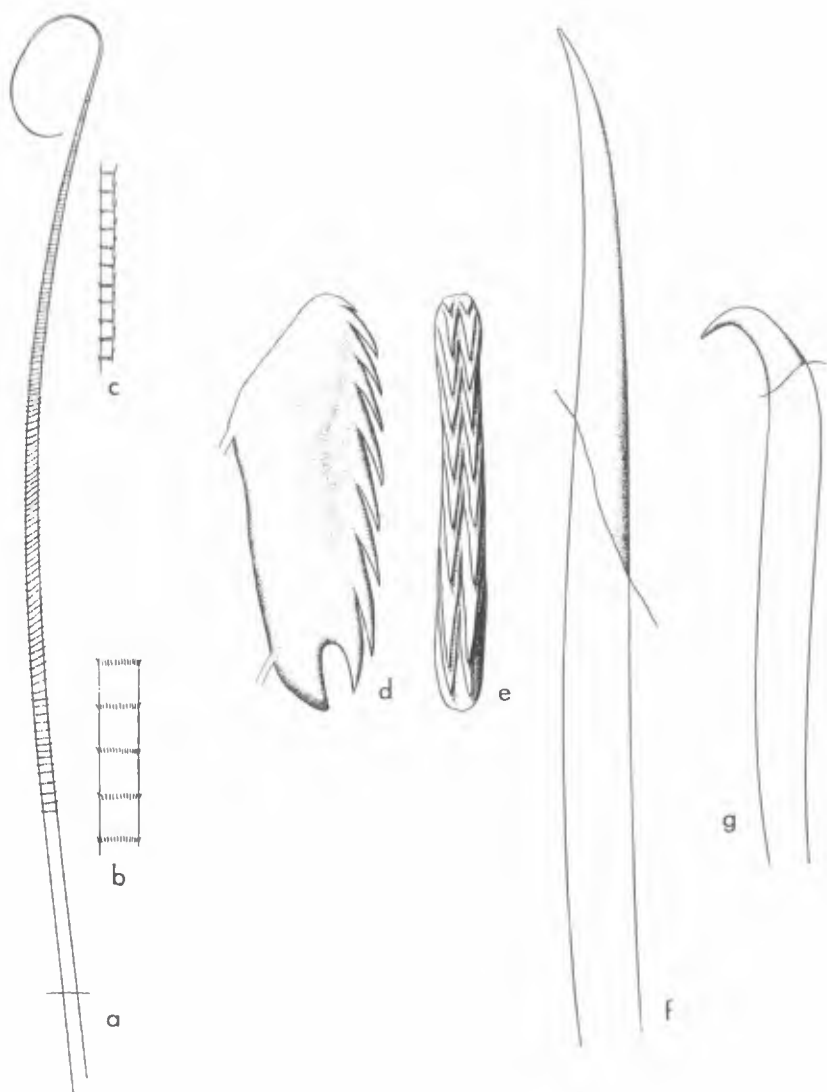


PLATE 25

Amphicteis sargassoensis, new species (A 120)

- a. Anterior end with oral tentacles everted; all branchial styles lost but a posterior one on right side, x 15.
- b. First abdominal segment, with serrated flanged notopodium, x 46.
- c. Posterior end, in dorsal view, x 15.
- d. Thoracic uncinus, in frontal view, x 2650.
- e. Thoracic uncinus, in lateral view, x 2650.
- f. Abdominal uncinus, in frontal view, x 5200.
- g. Abdominal uncinus, in lateral view, x 5200.

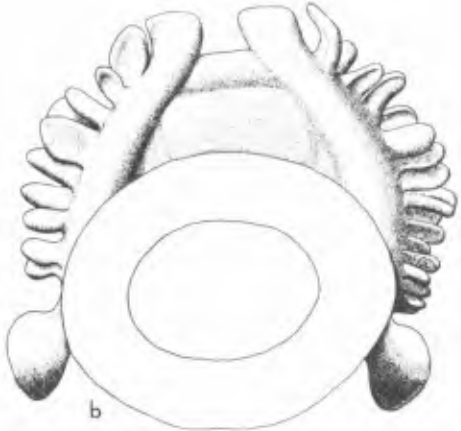


PLATE 26

Neopaiwa cirrata, new genus, new species (A 93)

- a. Anterior end through sixth setiger, oral tentacles somewhat everted, and branchiae lost; in dorsal view, x 28.
- b. Second thoracic uncinial parapodium, with nephridial papilla and uncinial ridge; in posterior view, x 106.
- c. Abdominal parapodium, with notopodial lobe and parapodium with cirrus; in posterior view, x 106.
- d. Thoracic uncinus, in lateral view, x 1232.
- e. Thoracic uncinus, in frontal view, x 1232.
- f. Abdominal uncinus, in lateral view, x 1232.
- g. Abdominal uncinus, in frontal view, x 1232.

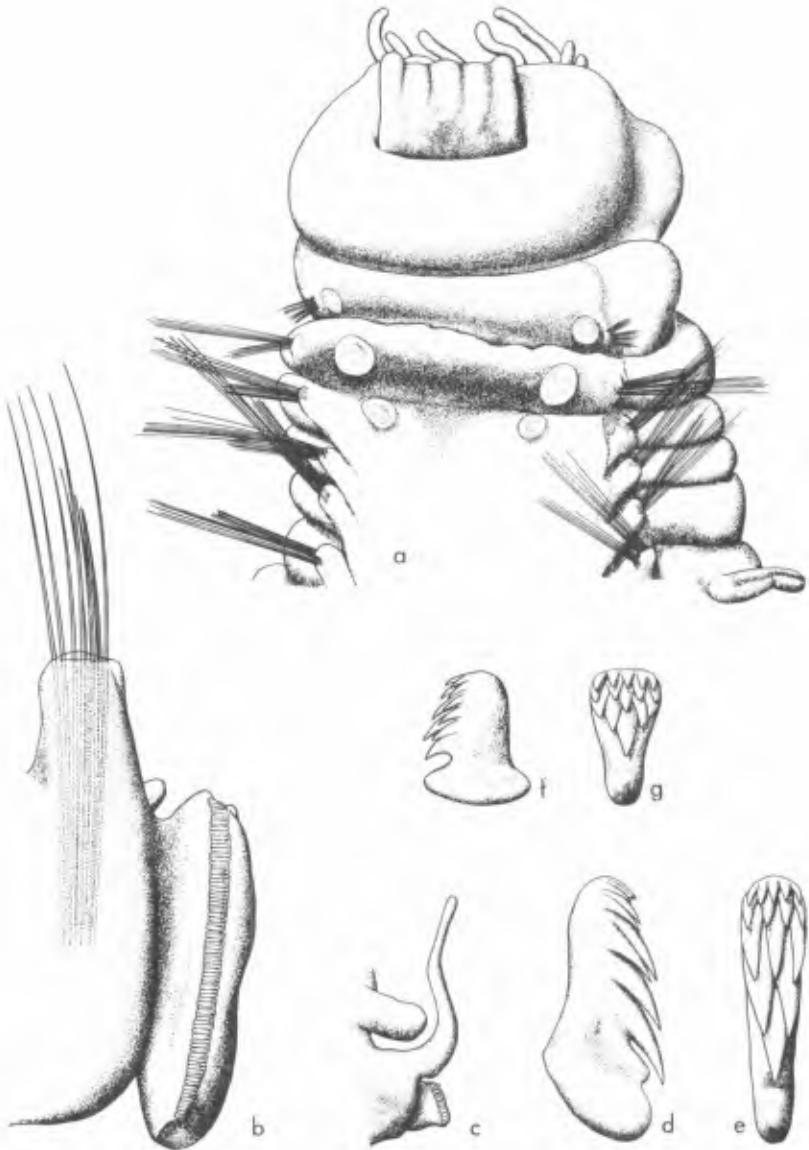


PLATE 27

Phyllampharete longicirra, new genus, new species (A 120)

- a. Anterior end with first nine setigers, oral tentacles everted, in dorsal view, x 21.
- b. Second abdominal parapodium, showing long cirrus, in posterior view, x 39.
- c. Thoracic uncinus, in three-fourths view, x 2730.
- d. Abdominal uncinus, in three-fourths view, x 2730.

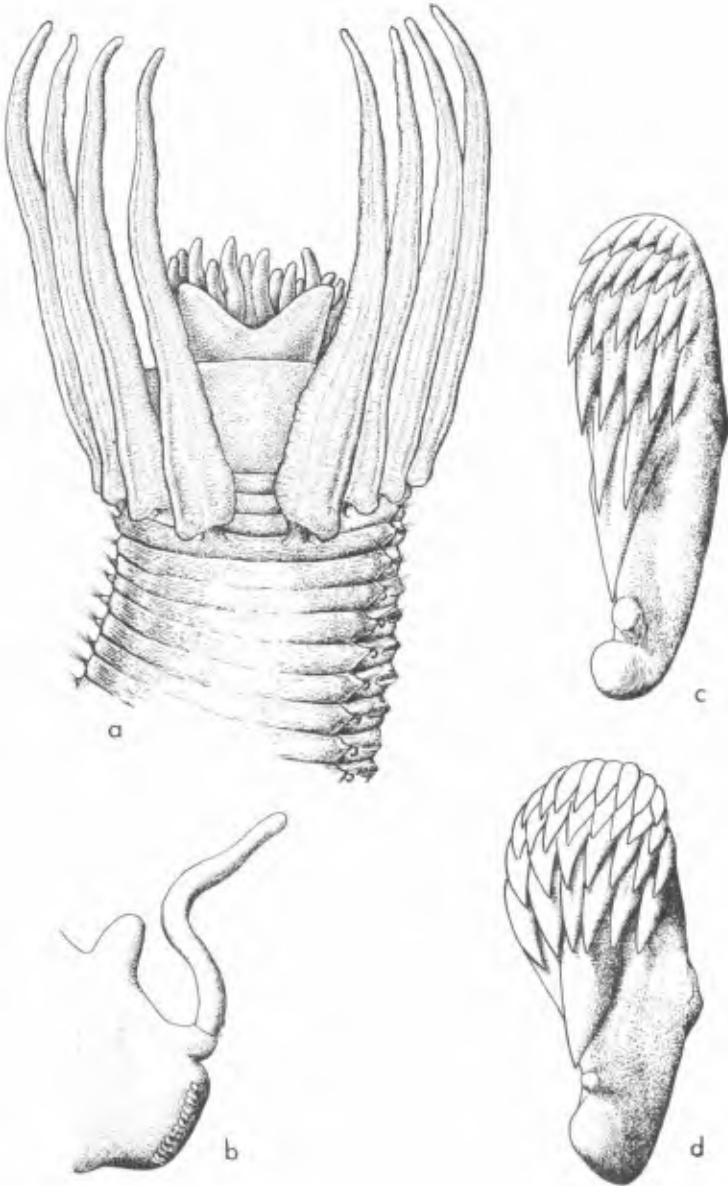


PLATE 28

Artacama globosa, new species (Ch 87)

- a. Anterior end, in right lateral view, x 8.
- b. Anterior end, in dorsal view, x 8.
- c. Posterior end, in left lateral view, x 8.
- d. Thoracic uncinus, in frontal view, x 800.
- e. Thoracic uncinus, in lateral view, x 800.

Euthelepus abranchiatus, new species (Ch 103)

- f. Thoracic uncinus, in lateral view, x 500.
- g. Thoracic uncinus, in frontal view, x 500.
- h. Short thoracic notoseta, x 500.
- i. Long thoracic notoseta, x 500.

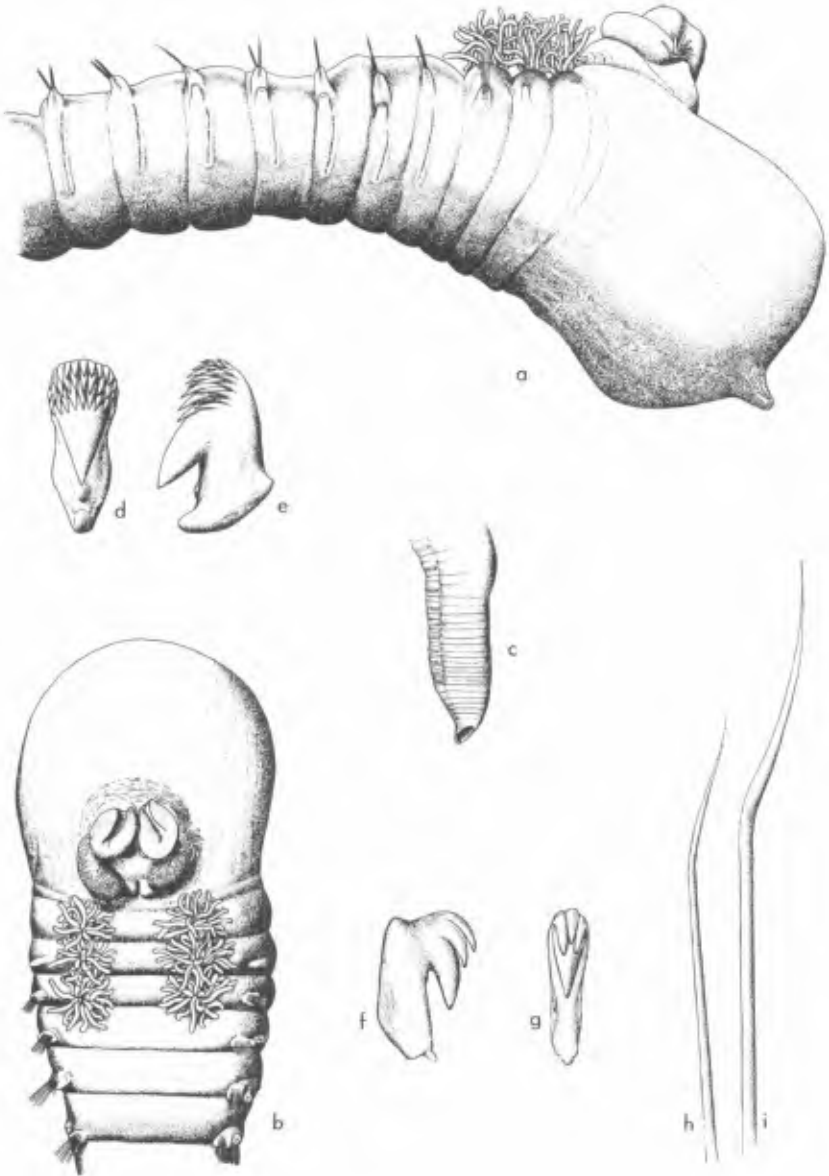


PLATE 29

Euthelepus atlanticus, new species (A 73)

- a. Anterior end through thorax, in left lateral view, x 21.
- b. Posterior end, showing annular raised ridges, in dorsal view, x 21.
- c. Thoracic seta from first fascicle, x 975.
- d. Abdominal uncinus, in lateral view, x 975.

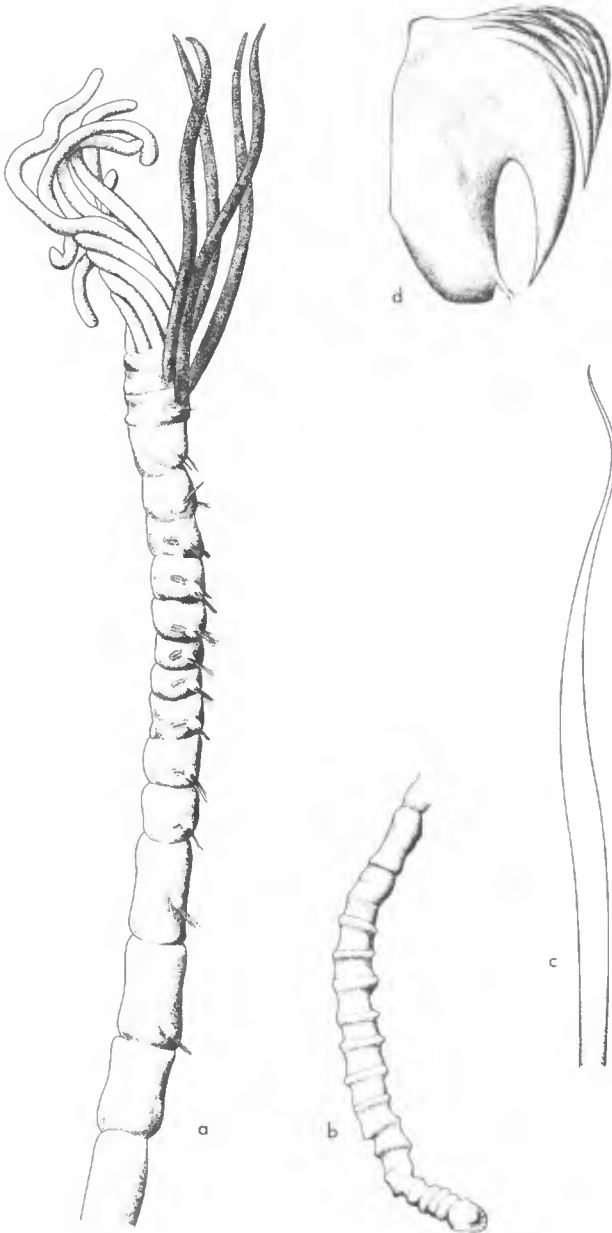


PLATE 30

Terebellides lobatus, new species (A 93)

- a. Anterior end, showing prostomium and peristomium in frontal view, and first few segments in ventral view, x 13.
- b. Branchia with 4-branched divisions, seen from above, x 13.
- c. Genuiculate neuroseta, from sixth setiger, x 140.
- d. Long-handled uncinus from eighth setiger, x 315.
- e. Abdominal avicular uncinus, in frontal view, x 230.
- f. Abdominal avicular uncinus, in lateral view, x 230.

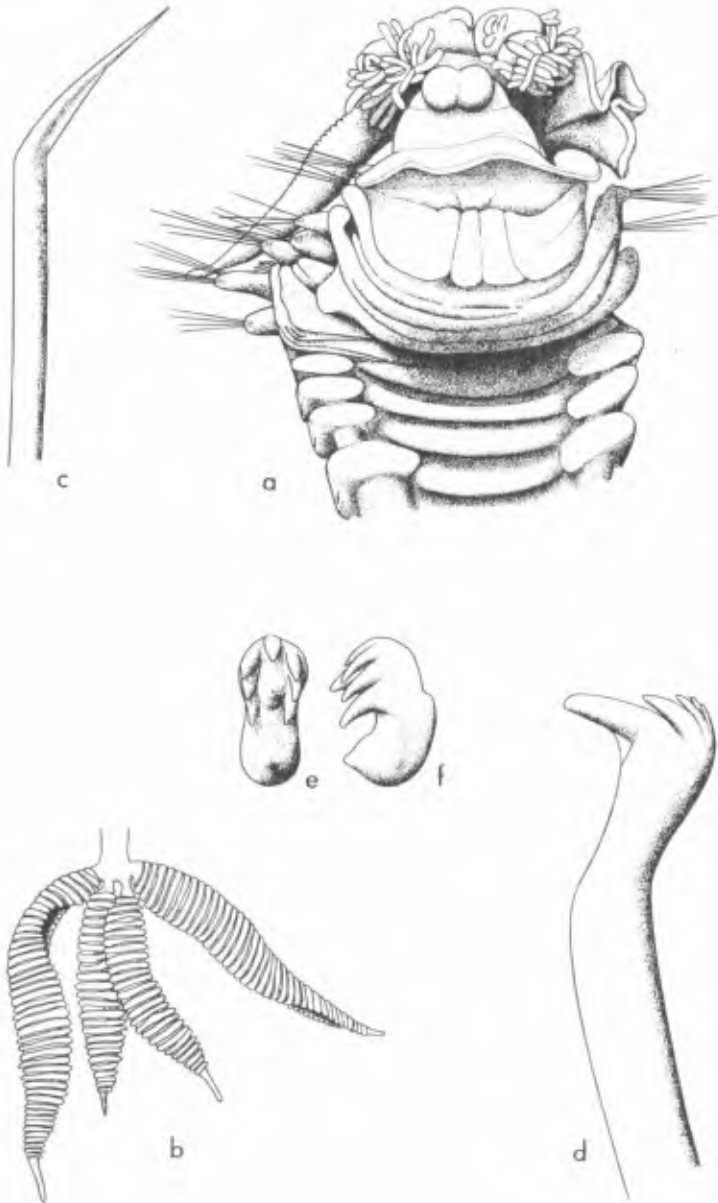


PLATE 31

Unobbranchus abyssalis Hartman (A 93)

- a. Anterior end, branchial stem broken off, in right lateral view, x 14.
- b. Anterior end, seen from the front, x 14.
- c. Anterior end with bases of tentacles and a few still attached, and branchial base, in dorsal view, x 14.
- d. Eighth thoracic parapodium, seen from the front, x 77.
- e. Thoracic uncinus, from eighth parapodium, in lateral view, x 935.

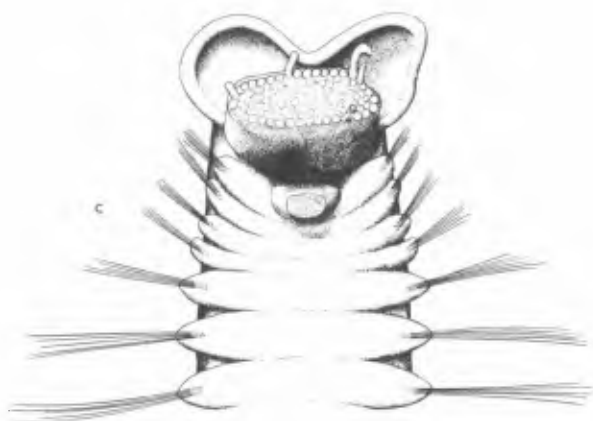
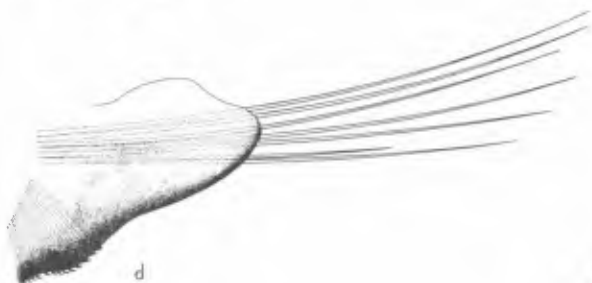
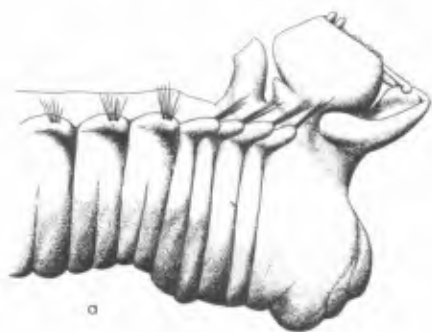


PLATE 32

Clavodorum atlanticum, new species

- a. Macrotubercle, x 420.
- b. Composite seta, median setiger, x 570.
- c. Median parapodium, posterior view, x 420.
- d. Anterior end, x 212.5.

Ephesiella macrocirris, new name

- e. Anterior end, x 130.
- f. Microtubercle, x 285.
- g. Recurved hook, first setiger, x 570.
- h. Median parapodium, anterior view, x 285.

Ephesiella mixta, new species

- i. Microtubercle, x 285.
- j. Recurved hook, first setiger, x 635.
- k. Macrotubercle, x 285.
- l. Anterior end, x 130.
- m. Composite seta, median parapodium, x 635.
- n. Median parapodium, anterior view, x 420.

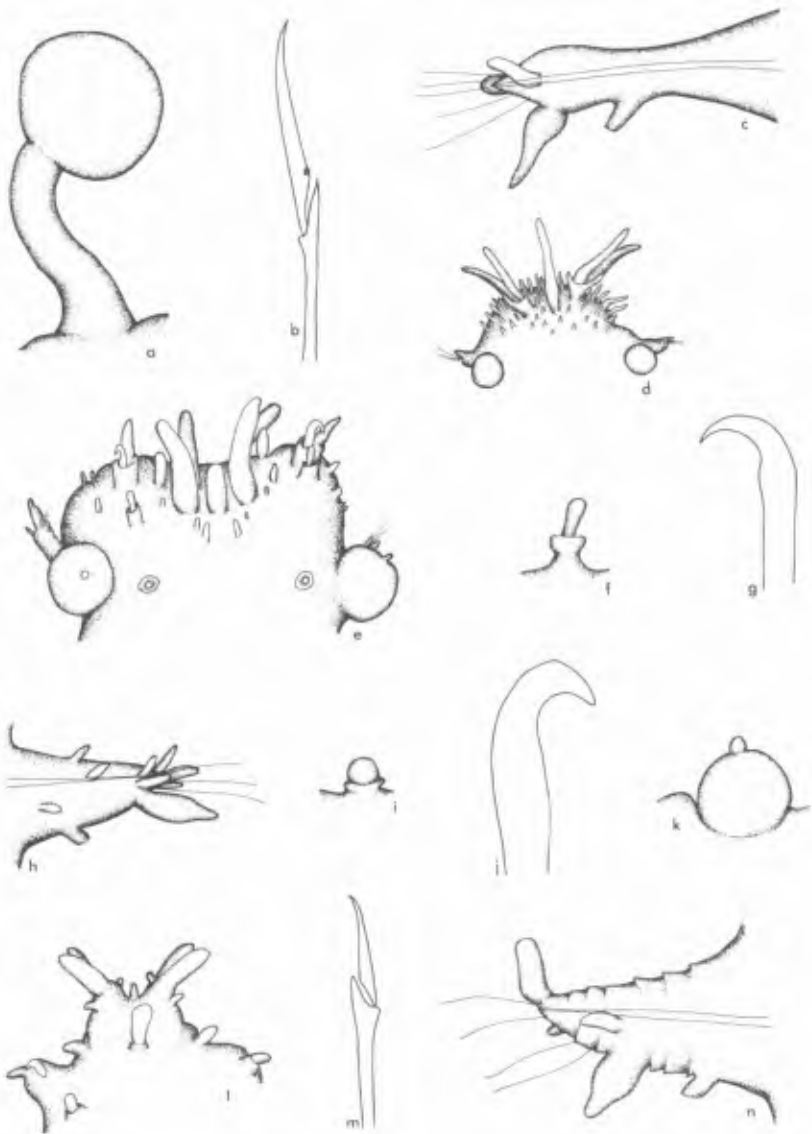


PLATE 33

Ephesiopsis guayanae, new name

- a. Anterior end, x 570.
- b. Composite seta, median parapodium, x 1270.
- c. Simple seta, median parapodium, x 1270.
- d. Recurved hook, first setiger, x 1270.
- e. Microtubercle, x 840.
- f. Macrotubercle, x 840.
- g. Median parapodium, anterior view, x 840.

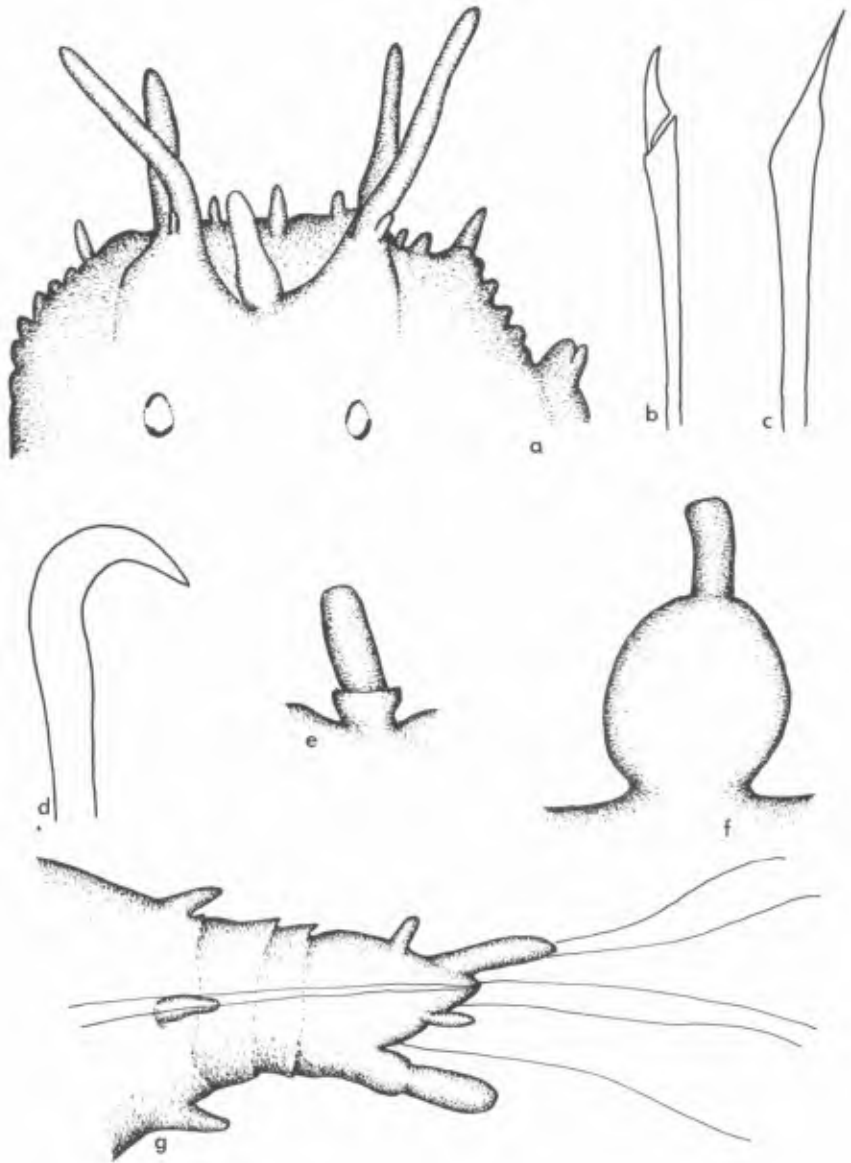


PLATE 34

Sphaerodoropsis corrugata, new name

a. Anterior end, x 130.

b. Median parapodium, anterior view, x 420.

Sphaerodoropsis elegans, new species

c. Anterior end, x 285.

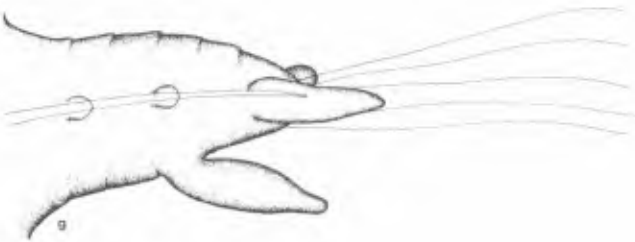
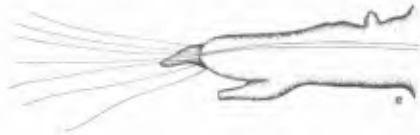
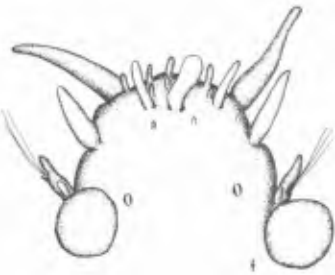
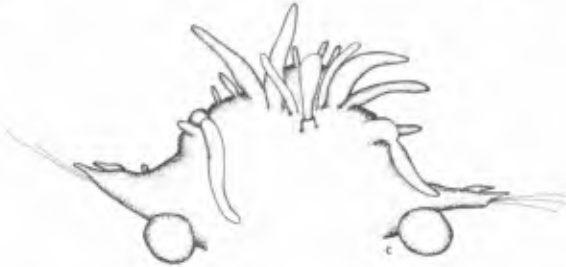
d. Composite seta, median parapodium, x 635.

e. Median parapodium, anterior view, x 285.

Sphaerodoropsis longipalpa, new name

f. Anterior end, x 130.

g. Median parapodium, anterior view, x 420.



INDEX

(Figures in bold face type refer to plates)

- Aberranta enigmatica*, 12, 190
aberranta, *Capitella*, 15, 136, 191, 213, 221, 230, 267
abbranchiata, *Ammotrypane*, 15, 129, 188, 195, 196, 197, 200, 201, 202, 203, 204, 205, 217, 229
Aricidea, 11, 96, 197
Haploscoloplos, 227
Nothria, 226
Paradoneis, 11, 100, 200, 202, 203, 204, 205, 206, 208, 221, 227
Paraonis, 227
abbranchiatus, *Euthelepus*, 18, 171, 174, 191, 199, 221, 231, 301
abyssalis, *Aparaonis*, 11, 191, 227
Cossura, 228
Nicon, 225
Unobranchnus, 19, 178, 211, 214, 215, 221, 231, 307
abyssicola, *Antinoella*, 224
Macellicephala, 24
Pista, 231
Abyssoclymene annularis, 230
abyssorum, *Ephesiella*, 65
Eunoe, 224
Kesun, 229
Neanthes, 226
Pisione, 221
Pisionura, 4, 32, 33, 190, 215, 225, 253
Praxillella, 230
Sphaerodorum, 65
abyssus, *Notoproctus*, 16, 142, 191, 198, 206, 207, 230, 289
aciculata, *Pseudoscalibregma*, 14, 122, 124, 199, 201, 202, 203, 211, 214, 221, 229
aciculatus, *Cirrophorus*, 11, 191
aculeata, *Aphrodita*, 4
Aedicira belgicae, 11, 94, 99, 188, 196, 197, 199, 200, 204, 205, 207, 216, 217, 218, 227
parva, 11, 95, 195, 196, 197, 198, 205, 211, 213, 214, 227, 271
affinis, *Macellicephala*, 24
agassizi, *Rhampobranchium*, 9, 191, 226
Aglaophamus digitatus, 226
clamellata, 61
foliosus, 226
groenlandiae, 8, 60, 196, 197, 199, 200, 201, 202, 203, 208, 216, 226
igalis, 8, 190
minusculus, 8, 61, 194
posterobranchnus, 226
sp., 8, 60, 61, 204, 207, 218, 226
alba, *Lepidogyra*, 224
albicans, *Polycirrus*, 18, 170, 195
alhini, *Ancistrosyllis*, 51
Syuelmis, 7, 51, 200, 216, 217, 221, 225
alciopid, 6, 47, 209, 213
Alciopidae, 6, 47
Amaea trilobata, 169
Amaeana, 169
antipoda, 170
trilobata, 18, 169, 170, 231
sp., 18, 169, 203, 204
Amage, 163
sculpta, 230
sp., 17, 153, 194, 196
americana, *Barantolla*, 15, 135, 198, 201, 206, 221, 229
Glyceria, 8
Magelona, 12
Melinnata, 18, 158, 189, 199, 201, 203, 209, 210, 211, 212, 213, 231
americanus, *Trichobranchnus*, 19, 178, 196
Ammotrypane abbranchiata, 15, 129, 188, 195, 196, 197, 200, 201, 202, 203, 204, 205, 217, 229
aulogaster, 15, 129, 131, 229
aulogastrella, 15, 130, 194, 200, 201, 202, 203, 204, 205, 208, 209, 211, 212, 213, 214, 215, 218, 229, 287
chaetifera, 15, 131, 197, 203, 205, 208, 209, 211, 212, 213, 214, 229
cylindricaudatus, 15, 131, 194, 195, 196, 197, 198, 199, 200, 202, 211, 229
nematoides, 229
sp., 15, 130, 132, 197, 199, 201, 203, 207, 208, 210, 211, 212, 213, 214, 216, 217, 218
Ammotrypanella arctica, 15, 132, 201, 209, 211, 212, 213, 215, 221, 229
Ampharana antarctica, 230
Ampharete arctica, 17, 153, 188, 194, 195, 199, 201, 203, 205, 208, 230
keruelensis, 230
sp., 17, 153, 202, 205, 207, 213, 216
Ampharetidae, 17, 153, 171, 187

- ampharetids, 18, 164, 165, 194, 195,
 196, 200, 201, 203, 204, 205,
 206, 207, 208, 209, 210, 211,
 212, 213, 214, 215
 Ampharetides hoffeni, 231
 Amphicteis gunneri, 17, 154, 201,
 204, 230
 antarctica, 230
 sargassoensis, 17, 154, 207, 208,
 209, 211, 213, 215, 218, 221
 230, 295
 sibogae, 155
 trichophora, 17, 155, 195, 201,
 205, 230
 vestis, 17, 156, 189, 194, 203,
 230
 sp., 17, 156, 196, 197, 217
 amphinomid, 5, 35, 214
 Amphinomidae, 5, 34
 Amphitritinae, 165, 166
 Anaitides groenlandica, 5, 37
 sp., 5, 36, 37, 190, 191, 194, 207,
 217, 221
 Ancistrosyllis albini, 51
 groenlandica, 6, 50, 195, 196,
 200, 204, 225
 tentaculata, 50
 sp., 6, 50, 197, 202, 204, 206,
 214
 annularis, Abyssoclymene, 230
 annulosus, Tharyx, 13, 111, 188, 195,
 197, 202, 205, 206, 208, 228
 Anobothrella antarctica, 230
 Anobothrus gracilis, 17, 156, 195,
 196, 215, 231
 anoculata, Dorvillea rudolphi, 10, 90,
 195, 196, 197, 200, 216
 Eulalia, 5, 41, 195, 196, 199,
 201, 202, 203, 204, 206,
 207, 208, 214, 225, 257
 Langerhansia, 7, 54, 189, 194,
 196, 198, 199, 200, 201,
 202, 203, 204, 205, 225, 261
 Pholoe, 4, 25, 26, 189, 197, 198,
 200, 225, 249
 minuta, 26
 Anoplopisone, 31, 32
 antarctica, Ampharana, 230
 Amphicteis gunneri, 230
 Anobothrella, 230
 Austrolaenilla, 21, 224
 Grubianella, 231
 Leaena, 231
 Lumbrineris, 227
 Melinnantipoda, 231
 Myrioglobula, 230
 Paranorthis, 226
 Travisia, 229
 antarcticae, Laonice, 11, 104, 189,
 196, 199, 203, 228
 antarcticum, Sphaerodoridium, 226
 antarcticus, Notoproctus oculatus, 230
 antennata, Nereiphylla, 5, 190
 Scalibregmella, 14, 122, 125,
 126, 212, 214, 215, 221, 229,
 285
 Antinoana, 20
 fusca, 4, 20, 21, 194, 195, 196,
 197, 199, 200, 201, 202,
 203, 205, 206, 208, 209,
 224, 247
 Antinoella, 21
 abyssicola, 224
 sarsi, 21
 antipoda, Amaeana, 170
 apalea, Sosanella, 18, 190
 Aparaois abyssalis, 11, 191, 227
 Aphrodita aculeata, 4
 Aphroditidae, 4, 20, 29
 Apistobranchidae, 11, 104
 Apistobranchus typicus, 11, 104, 195
 Apomatus brownii, 231
 Arabellidae, 10, 88
 arctica, Ammotrypanella, 15, 132,
 201, 209, 211, 212, 213, 215,
 221, 229
 Ampharete, 17, 153, 188, 194,
 195, 199, 201, 203, 205,
 208, 230
 Aricidea abranchiata, 11, 96, 197
 neosuecica, 11, 96, 196, 199,
 201, 202, 203, 204, 205,
 209, 227, 271
 suecica, 11, 97, 189, 197, 198,
 200
 tetrabranchia, 11, 98, 189, 196,
 197, 198, 199, 200, 201, 204,
 206, 218, 227, 271
 uschakovi, 227
 sp., 11, 99, 194, 207, 208, 211,
 212, 213, 215
 armandi, Nothria, 226
 Artacama canadensis, 168
 globosa, 18, 167, 190, 196, 301
 zebuensis, 168
 Artacaminae, 165, 167
 Asclerocebilus beringianus, 14, 122,
 215, 221, 229
 intermedius, 14, 122, 123, 203,
 212, 216, 229
 sp., 14, 123, 210
 aspera, Peisidice, 29, 30, 31
 assimilis, Petta, 230
 Asychis atlanticus, 16
 biceps, 16, 139, 195, 196
 collariceps, 16
 atlantica, Leiocapitella, 15, 190

- Lumbrineris*, 9, 81, 82, 199, 202, 203, 204, 205, 206, 208, 221, 227
Macellicephalo, 24
Paranorthis, 9, 226
atlanticum, *Clavodorum*, 8, 62, 63, 191, 208, 209, 221, 226, 309
atlanticus, *Asychis*, 16
Euthelepus, 18, 172, 188, 190, 197, 303
atlantisa, *Nothria*, 9, 189
Auchenoplax crinita, 18, 156, 188, 195
aulogaster, *Ammotrypane*, 15, 129, 131, 229
aulogastrella, *Ammotrypane*, 15, 130, 194, 200, 201, 202, 203, 204, 205, 208, 209, 211, 212, 213, 214, 215, 218, 229, 287
australis, *Paramphinome*, 225
Austrolaenilla, 21
antarctica, 21, 224
Austrophyllum, 37
charcoti, 37, 225
maculatum, 5, 38, 191, 209, 221, 225, 255
Axiothella sp., 145
Barantolla americana, 15, 135, 198, 201, 206, 221, 229
Behryce peripatus, 65
belgicae, *Aedicira*, 11, 94, 99, 188, 196, 197, 199, 200, 204, 205, 207, 216, 217, 218, 227
bellii, *Marphysa*, 9
beringianus, *Asclerocheilus*, 14, 122, 215, 221, 229
bermudensis, *Hesiocaeca*, 6, 49, 217, 222, 225
Jasmineira, 19, 180, 222
Paronuphis, 9, 226
Peisidice, 4, 30, 190, 216, 222, 249
Poecilochaetus, 12, 107, 190, 217, 222, 228
biceps, *Asychis*, 16, 139, 195, 196
bidentata, *Protomystides*, 5, 46, 194
bioculata, *Megalomma*, 19
biserialis, *Sphaerodoropsis*, 70, 71
Sphaerodorum, 70
boeckii, *Laphania*, 18, 231
Boguea, 148, 149
enigmatica, 17, 148, 291
Bogucidae, 17, 148
Boguella, 148, 149
ornata, 17, 149, 190, 217, 222, 230, 291
bombyx, *Spiophanes*, 12
Bonellia, 89
borealis, *Buskiella*, 14, 191, 222
Clymenura, 16, 140, 188, 195, 196, 197, 198, 200, 201, 206, 207, 208, 211, 213
Brada, 114, 116
bransfieldia, 228
brevis, 115
glabra, 116
gravieri, 228
villosa, 14, 114, 195
branchiata, *Sclerobregma*, 14, 122, 129, 198, 229
Braniella palpata, 225
pupa, 7, 51, 195, 206, 207, 211, 213, 218, 225
bransfieldia, *Brada*, 228
brevifrons, *Sphaerosyllis*, 7, 55, 194, 195, 197, 198
brevipes, *Lumbriconereis*, 85
Lumbrineris, 85
Ninoo, 10, 81, 85, 87, 197, 198, 199, 201, 202, 203, 204, 206, 207, 210, 218, 227, 267
brevis, *Brada*, 115
Fauveliopsis, 14, 115, 198, 199, 201, 203, 204, 206, 207, 208, 213, 214, 215, 228, 277
brownii, *Apomatus*, 231
Buskiella, 114
borealis, 14, 191, 222
buskii, *Melinna*, 231
caeca, *Leaena*, 167
caecoides, *Nereis*, 7, 59, 205, 221, 226
Califa chilensis, 227
schmitti, 10, 91, 196, 197, 198, 214, 227
canadensis, *Artacama*, 168
capax, *Magelona*, 12, 106, 210, 216, 228
capitata, *Capitella*, 15, 136, 198, 203, 230
Capitella aberranta, 15, 136, 191, 213, 221, 230, 267
capitata, 15, 136, 198, 203, 230 sp., 209, 211, 213
capitellid, 16, 139, 212
Capitellidae, 15, 135
Castalia punctata, 50
Caulleriella zetlandica, 13 sp., 13
caulleryi, *Polydora*, 12, 188
Ceratocephale loveni, 7, 57, 195, 196, 201, 202, 204, 206, 208, 209, 210, 213, 215, 217, 218, 225 sp., 7, 58
Ceratonereis versipedata, 7, 58, 201, 202, 207, 209, 216, 221, 225
(Ceratonereis) versipedata, *Nereis*, 58
cerruti, *Paraonides*, 102

- chaetifera*, *Ammotrypane*, 15, 131,
 197, 203, 205, 208, 209, 211,
 212, 213, 214, 229
chaetopterid, 213
Chaetopteridae, 13, 109
Chaetosyllis, 56
Chaetozone gayheadia, 13, 109, 189,
 195, 196, 228
 setosa, 13, 110, 188, 195, 206,
 213, 217, 228
 sp., 13, 110, 200, 201, 203, 204,
 206, 207, 208, 209, 210, 211,
 212, 213, 214, 215, 218
challengeriae, *Fauveliopsis*, 114, 115,
 228
charcoti, *Austrophyllum*, 37, 225
chilensis, *Califia*, 227
Chloeia sp., 5, 34, 203, 216, 217, 218
Chone sp., 19, 179, 195, 196, 198
chrysopetalid, 217
Chrysopetalidae, 5, 34
cidariophilum, *Phalacrostemma*, 17,
 151, 217
cincinnatus, *Thelepus*, 231
cinctus, *Muggoides*, 18, 190
cirrata, *Clymenura*, 16, 222
 Flabelligella, 14, 118, 190, 195,
 281
 Laonice, 11, 104, 189, 198
 Neopaiwa, 18, 158, 159, 191,
 215, 221, 231, 297
 Scalispinigera, 14, 122, 128, 191,
 200, 221, 229, 285
Cirratulidae, 13, 109
cirratulids, 13, 112, 209, 218
cirrifera, *Prionospio*, 12, 104, 189,
 195, 200
Cirrodoce, 39
 cristata, 5, 39, 40, 190, 194, 251
Cirrophorus aciculatus, 11, 191
 lyriformis, 11, 189
Clavodorum, 63
 atlanticum, 8, 62, 63, 191, 208, 209
 221, 226, 309
Clymenura borealis, 16, 140, 188,
 195, 196, 197, 198, 200, 201,
 206, 207, 208, 211, 213
 cirrata, 16, 222
 polaris, 16, 140
 sp., 16, 140, 209, 218
collariceps, *Asychis*, 16
collarifera, *Therochaeta*, 14, 121, 194,
 196
collaris, *Leaena*, 167
 Melinnexis, 231
 minima, *Leaena*, 166, 167
collini, *Eunice*, 9
compressum, *Myzostomum*, 227
conchylega, *Nothria*, 9, 77, 79, 80,
 194, 195, 226
 Oouphis, 77
 cornatus, *Paraonis*, 11, 102, 189, 195,
 198, 199, 200, 204, 205, 227
cornuta, *Langerhansia*, 54, 55
corrugata, *Sphaerodoropsis*, 8, 63, 69,
 73, 195, 198, 204, 205, 206, 208,
 226, 313
Cossura abyssalis, 228
 longocirrata, 13, 113, 188, 194,
 195, 196, 197, 198, 201, 204,
 205, 206, 209, 211, 212, 228
 sp., 13, 113, 213
Cossuridae, 13, 113
costarum, *Telepsavus*, 109
crassicephala, *Lumbrineris*, 9, 81, 82,
 196, 227
crinita, *Auchenoplax*, 18, 156, 188,
 195
cristata, *Cirrodoce*, 5, 39, 40, 190, 194,
 251
 Melinna, 18, 157
 Pista, 18, 167, 195
crosetensis, *Harmothoe*, 224
Ctenodrilidae, 13, 187
cuculligera, *Maldane*, 16
cylindricaudatus, *Ammotrypane*, 15,
 131, 194, 195, 196, 197, 198, 199,
 200, 202, 211, 229
cysticum, *Myzostomum*, 227
Dasybranchus sp., 15, 137
Dawbinia, 31
delta, *Prionospio*, 12, 191, 222
dibranchia, *Ninoe*, 10, 81, 86, 197,
 207, 208, 227, 267
diceria, *Dodecaceria*, 13
digitatus, *Aglaophamus*, 226
Diplocirrus, 114
Disoma watsoni, 12, 107, 195, 196,
 197, 198, 199, 206, 228
 sp., 12, 107, 207, 209, 211, 213
disomid, 211, 216
Disomidae, 12, 107
dispar, *Exogone*, 7, 51, 188, 194, 195,
 196, 197, 199, 201, 203, 204, 205,
 206, 207, 209, 210, 213, 215, 217,
 218, 225
Dodecaceria diceria, 13
Dorvillea rudolphi anoculata, 10, 90,
 195, 196, 197, 200, 216
 sp., 10, 90, 212
dorvilleid, 10, 91
Dorvilleidae, 10, 90
drakei, *Orbiniella*, 94, 227
Drilonereis falcata minor, 10, 88
 longa, 10, 88
 sp., 10, 88, 195, 198
dumerilii, *Platynereis*, 7, 59, 209
Dysponetus gracilis, 5, 34, 197, 201,
 225
 sp., 5, 34, 222

- ebranchiata, *Leaena*, 167
 ehlersi, *Prionospio*, 12, 105, 197
 elamellata, *Aglaophamus*, 61
 elegans, *Phalacrostermma*, 17, 152, 208,
 209, 210, 212, 213, 214, 215, 221,
 230, 293
 Sphaerodoropsis, 8, 63, 71, 191,
 204, 218, 226, 313
 elongata, *Neosabellides*, 231
 Samytheta, 18, 163, 200, 231
 eltanina, *Macellicephala*, 224
 enigmatica, *Aberranta*, 12, 190
 Bogea, 17, 148, 291
 Ephesiella, 62, 64, 68
 abyssorum, 65
 macrocirris, 8, 63, 65, 67, 196,
 197, 200, 201, 226, 309
 mixta, 8, 63, 66, 309
 peripatus, 65
 Ephesiopsis, 67
 guayanae, 8, 62, 68, 191, 311
 Euchone incolor, 19, 179, 188, 194,
 195, 196, 197, 213, 218, 231
 sp., 19, 179, 199, 205, 206, 216
 Eulalia, 46
 anoculata, 5, 41, 195, 196, 199,
 201, 202, 203, 204, 206, 207,
 208, 214, 225, 257
 longicirrata, 46
 sp., 5, 42
 Eumida sanguinea, 44
 sp., 5, 42, 195, 196, 197
 Eunereis patagonica, 225
 sp., 7, 190
 Eunice collini, 9
 norvegica, 9, 80, 196, 197, 199,
 226
 pennata, 80
 sp., 9, 80, 199, 226
 Eunicidae, 9, 80
 Eunoë abyssorum, 224
 nodosa, 4
 spinulosa, 4, 23, 203, 221, 224
 sp., 4
 Euprosine sp., 5, 35, 191, 213
 Euprosinidae, 5, 35
 Eupistella grubei, 231
 Euthelopus, 171, 172, 175
 abranchiatus, 18, 171, 174, 191,
 199, 221, 231, 301
 atlanticus, 18, 172, 188, 190, 197,
 303
 setubalensis, 171, 174
 tenuis, 174
 Euzonus profundus, 229
 Exogone, 53
 dispar, 7, 51, 188, 194, 195, 196,
 197, 199, 201, 203, 204, 205,
 206, 207, 209, 210, 213, 215,
 217, 218, 225
 verugera profunda, 7, 52
 sp., 7, 52, 211
 Exogonella, 53
 longipedata, 7, 190
 Exogoninae, 7, 53, 186, 191
 Exogonita 53
 oculata, 7, 53, 191, 207, 211, 221,
 225, 261
 Fabricia sabella, 19
 falcata minor, *Drilonereis*, 10, 88
 Fauveliopsis, 114, 186
 brevis, 14, 115, 198, 199, 201,
 203, 204, 206, 207, 208, 213,
 214, 215, 228, 277
 challengeriae, 114, 115, 228
 glabra, 14, 115, 116, 202, 203,
 204, 206, 209, 213, 216, 228
 scabra, 14, 115, 117, 189, 195,
 196, 198, 199, 201, 202, 203,
 206, 207, 208, 209, 210,
 211, 215, 216, 217, 218, 228,
 279
 sp., 229
 felix, *Phylo*, 10, 92, 194, 195
 ferruginea, *Nephtys*, 226
 Filibranchus roseus, 19
 sp., 19, 175, 195
 filicornis, *Laetmonice*, 4, 20, 194
 Exogoninae, 7, 53, 186, 191
 filiformis, *Heteromastus*, 15, 138, 189,
 195, 196, 198, 199, 204, 209
 Jasmincira, 19, 180, 196
 Filograninae, 182, 183
 Filogranula gracilis, 19, 182, 216
 sp., 19, 182, 208, 213, 218, 231
 Flabelligella, 114, 119, 127
 cirrata, 14, 118, 190, 195, 281
 minuta, 14, 119, 201, 217, 218,
 221, 229
 papillata, 14, 119, 198, 216, 217
 218, 229
 sp., 14, 120, 213
 Flabelligera, 114
 sp., 14, 120, 190, 217, 222, 281
 flabelligera, *Flota*, 229
 Flabelligeridae, 14, 113, 115, 127, 187
 flabelligerids, 14, 121, 201, 215
 Flota flabelligera, 229
 foliosus, *Aglaophamus*, 226
 forbesii, *Travisia*, 15
 fossor, *Sternaspis*, 15
 fragilis intermedius, *Haploscoloplos*,
 10, 91, 198
 Lumbrineris, 9, 81, 82, 196, 199,
 201, 202, 203, 204, 206, 207,
 208, 210
 fulgoris, *Poecilochaetus*, 12, 107, 197,
 198

- fusca*, Antinoana, 4, 20, 21, 194, 195, 196, 197, 199, 200, 201, 202, 203, 205, 206, 208, 209, 224, 247
 Ninoc, 86
- fusififormis*, Owenia, 17, 230
- gayheadia*, Chaetozone, 13, 109, 189, 195, 196, 228
 Ninoc, 10, 81, 87, 227
- glabra*, Brada, 116
 Fauveliopsis, 14, 115, 116, 202, 203, 204, 206, 209, 213, 216, 228
- glabrus*, Neolipobranchius, 14, 122, 123, 124, 191, 221, 229, 283
- glcififex*, Maldane, 16
- globosa*, Artacama, 18, 167, 190, 196, 301
- globula*, Psammolyce, 4, 25, 27, 190, 222, 251
- Glycera americana*, 8
mimica, 8, 73, 188, 196, 198, 199, 200, 201, 203, 204, 205, 206, 209, 213, 215, 216, 217, 226
tesselata, 8, 74, 199, 226
 sp., 8, 74, 194, 195, 202, 203, 207, 208, 209, 210, 211, 212, 214, 218
- Glyceridae, 8, 73
- Glycine lindbergi*, 76
profunda, 8, 74, 202, 207, 209, 211, 215, 218, 221, 226, 253
 sp., 74
- Glyphanostomum pallescens*, 18, 157, 196, 198, 201, 203, 216, 231
 sp., 18, 157, 218
- Goniada norvegica*, 9, 76, 196, 198, 199, 209
 sp., 9, 76, 207, 208, 210, 213, 216
- Goniadidae, 8, 74
- gosnoldi*, Myriowenia, 17
- gracilior*, Rhodine, 16
- gracilis*, Anobothrus, 17, 156, 195, 196, 215, 231
 Dysponetus, 5, 34, 197, 201, 225
 Filogranula, 19, 182, 216
 Neosamytha, 231
 Paraonis, 11, 102, 194, 195, 197, 204, 206
 Praxillella, 16, 144, 197, 200, 230
 Sphaerodorum, 65
- gravieri*, Brada, 228
 Kesuo, 15, 134, 188, 196, 198, 199, 200, 201, 202, 203, 205, 206, 210, 211, 212, 218, 229
 Travia, 134
- grimaldi*, Macellicephala, 24
- grimaldii*, Spirodiscus, 19, 183, 214, 216, 217, 231
- groenlandiae, Aglaophamus, 8, 60, 196, 197, 199, 200, 201, 202, 203, 208, 216, 226
- groenlandica, Anaitides, 5, 37
 Ancistrosyllis, 6, 50, 195, 196, 200, 204, 225
- Grubea, 53
- grubei*, Eupistella, 231
- Grubianella, 161
 antarctica, 231
- guayanae*, Ephesiopsis, 8, 62, 68, 191, 311
- guoneri*, Amphitecis, 17, 154, 201, 204, 230
 antarctica, Amphitecis, 230
- Haematocleptes, 88
- leaenae*, 10, 88, 89, 191, 196, 269
- terehellidis*, 88, 89, 90
- Haliplaenes, 39
- Haploscoloplos abrauchiata*, 227
fragilis intermedius, 10, 91, 198
kerguelensis, 227
 sp., 10, 92, 201, 206, 215, 227
- Harmothoe crosetensis*, 224
 sp., 4, 24, 194
- harmothoids, 4, 25, 199, 207, 210, 211, 212, 216
- Harmothoinae, 21
- Hauchiella* sp., 231
- heeri*, Myriochele, 17, 146, 189, 199, 201, 202, 203, 206, 207, 208, 209, 230
- Herdmanella nigra*, 224
- Hermella varians*, 151
- Hesiocaeca bermudensis*, 6, 49, 217, 222, 225
- Hesionidae, 6, 49
- hesionids, 6, 50, 212
- Hesperophyllum*, 37
- Heteromastus filiformis*, 15, 138, 189, 195, 196, 198, 199, 204, 209
- Heterospio longissima*, 13, 108, 201, 203, 205, 206, 208, 221, 228
- Heterospionidae, 13, 108
- hoffeni*, Ampharetides, 231
- Hyalinoecia tubicola*, 9, 77, 195
 sp., 9, 77, 196, 209, 216, 217
- hydrocerini*, Stelechopus, 227
- hystricis*, Nephrys, 8, 226
- hystrix*, Sphaerosyllis, 7
- igalis*, Aglaophamus, 8, 190
- Ilyphagus*, 114, 185
octobranchus, 14, 120, 189, 195, 196, 203, 207, 210, 211, 212, 216, 229
wyvillei, 229
 sp., 14, 121, 198, 199, 202, 203, 208, 213, 218
- impatiens*, Lumbrineris, 84

- incerta*, *Pseudocapitella*, 15
incolor, *Euchone*, 19, 179, 188, 194,
 195, 196, 197, 213, 218, 231
inflata, *Scalibregma*, 14, 122, 125, 229
inflatum, *Scalibregma*, 125
intermedius, *Asclerocheilus*, 14, 122,
 123, 203, 212, 216, 229
Haploscoloplos fragilis, 10, 91,
 198
Iospilidae, 6
iridescens, *Nothria*, 9
Isocirrus planiceps, 16, 140, 208, 209,
 210, 211, 230
 sp., 16, 141, 210, 212
Jasmiueira bermudensis, 19, 180, 222
filiformis, 19, 180, 196
 sp., 19, 180, 213, 231
jeffreysii, *Paramphinoe*, 5, 35, 188,
 194, 195, 197, 198, 199, 200, 201,
 202, 203, 205, 216, 217, 225
Tachytrypaene, 15, 134, 201, 202,
 204, 205, 210, 221, 229
kerguelensis, *Ampharete*, 230
Haploscoloplos, 227
Kesun abyssorum, 229
gravieri, 15, 134, 188, 196, 198,
 199, 200, 201, 202, 203, 205, 206,
 210, 211, 212, 218, 229
koehleri, *Thelepidus*, 231
kosteriensis, *Paranaitis*, 5
kroyeri, *Spiophanes*, 12, 105, 188, 194,
 195, 197, 198, 201, 202, 203, 205,
 206, 207, 208, 209, 210, 228
labiata, *Lysippe*, 18, 157, 188, 194,
 196, 198
Lahidognathus, 89
Lacydoniidae, 6
Laetmonice filicornis, 4, 20, 194
 sp., 4, 20, 199, 207, 209, 210, 211,
 213, 216
lanceolata, *Pirakia*, 5, 44, 197, 198,
 200, 210, 225, 259
Travisioipsis, 6, 200
langerhansi, *Vermilioipsis*, 20, 181,
 200, 221, 231
Langerhansia anoculata, 7, 54, 189,
 194, 196, 198, 199, 200, 201, 202,
 203, 204, 205, 225, 261
cornuta, 54, 55
Laonice antarcticae, 11, 104, 189, 196,
 199, 203, 228
cirrata, 11, 104, 189, 198
 sp., 12, 104, 194, 206, 213
Laphania boeckii, 18, 231
latericeus, *Notomastus*, 15, 138, 188,
 197, 198, 199, 200, 230
latreilli, *Lumbrineris*, 9, 81, 83, 188,
 194, 195, 196, 198, 199, 201, 205,
 227
Laena antarctica, 231
caeca, 167
collaris, 167
minima, 166, 167
cbranchiata, 167
minima, 18, 89, 90, 166, 231
 sp., 18, 167
leaeanae, *Haematocleptes*, 10, 88, 89,
 191, 196, 269
Leanira minor, 4, 25, 26, 195, 196,
 198, 199, 200, 201, 202, 203, 204,
 205, 206, 208, 209, 211, 216, 218,
 224
 sp., 4, 26, 207, 210, 211, 212
Leiocapitella atlantica, 15, 190
Leiochrides, 138
 sp., 15, 138, 191, 207
(Leodamas) marginatus, *Scoloplos*,
 227
ohlini, *Scoloplos*, 10
Lepidofimbria oculata, 224
Lepidogyra alba, 224
limbata punctata, *Pseudomystides*, 5,
 46, 195, 197, 198, 200, 201, 202,
 204, 205, 206, 207, 208, 209, 210,
 214, 217, 225
lindbergi, *Glycinde*, 76
linea, *Microrbinia*, 10, 92, 194, 209,
 227
Proscalibregma, 229
Lipobranchius, 123
lobatus, *Terebellides*, 19, 175, 198,
 202, 204, 211, 212, 213, 215, 222,
 231, 305
longa, *Drilonereis*, 10, 88
longicirra, *Phyllampharete*, 18, 160,
 161, 191, 215, 221, 231, 299
longicirrata, *Eulalia*, 46
longipalpa, *Pisione*, 32
Sphaerodoropsis, 8, 63, 72, 194,
 197, 198, 200, 217, 226, 313
longipedata, *Exogonella*, 7, 190
longissima, *Heterospio*, 13, 108, 201,
 203, 205, 206, 208, 221, 228
Praxillura, 16
longicirrata, *Cossura*, 13, 113, 188,
 194, 195, 196, 197, 198, 201, 204,
 205, 206, 209, 211, 212, 228
lopadorrhynchid, 6, 48, 209, 214, 215
Lopadorrhynchidae, 6, 39, 47
Lopadorrhynchus uncinatus, 6, 47,
 206, 210, 212
 sp., 6, 48, 208, 213, 214
loveni, *Ceratocephale*, 7, 57, 195, 196,
 201, 203, 204, 206, 208, 209, 210,
 213, 215, 217, 218, 225
lumbricalis, *Nicomache*, 16, 141, 199,
 200, 230
Lumbriclymene minor, 16
nasuta, 16, 230
 sp., 16, 141, 195, 201, 202, 209,
 217

- Lumbriclymenella robusta*, 230
Lumbriclymeninae, 141
Lumbriconereis brevipes, 85
 lumbrinerid, 213
Lumbrineridae, 9, 81, 88
Lumbrineris antarctica, 227
 atlantica, 9, 81, 82, 199, 202, 203, 204, 205, 206, 208, 221, 227
 brevipes, 85
 crassicephala, 9, 81, 82, 196, 227
 fragilis, 9, 81, 82, 196, 199, 201, 202, 203, 204, 206, 207, 208, 210
 impatiens, 84
 latreilli, 9, 81, 83, 188, 194, 195, 196, 198, 199, 201, 205, 227
 magalhaensis, 227
 paradoxa, 9, 81, 83, 202, 221, 227
 tenuis, 9, 81, 83, 195, 196
 sp., 10, 84, 85, 189, 196, 199, 202, 206, 208, 209, 210, 211, 212, 213, 214, 215, 216, 217, 218, 222
Lycastinae, 31
lyra, *Paradoneis*, 11, 189
lyriformis, *Cirrophorus*, 11, 189
Lysippe labiata, 18, 157, 188, 194, 196, 198
Macellicephala abyssicola, 24
 affinis, 24
 atlantica, 24
 eltanina, 224
 grimaldi, 24
 nationalis, 224
 paucidentata, 24
 violacea, 24
 sp., 4, 24, 209, 210, 211, 215, 218
macrocirris, *Ephesiella*, 8, 63, 65, 67, 196, 197, 200, 201, 226, 309
maculatum, *Austrophyllum*, 5, 38, 191, 209, 221, 225, 255
magalhaensis, *Lumbrineris*, 227
Magelona americana, 12
 capax, 12, 106, 210, 216, 228
 sp., 12, 106, 206, 207, 211, 212, 214
Magelonidae, 12, 106
Maldane, 142
 cuculligera, 16
 glebifex, 16
 sarsi, 16, 141, 195, 196, 198, 206, 230
Maldanidae, 16, 139
maldanids, 16, 145, 194, 195, 196, 198, 210, 211, 212, 214, 215, 216, 217, 218
Maldaninae, 142
marginatus, *Scoloplos (Leodamas)*, 227
marioni, *Tharyx*, 13, 111, 188, 197, 198, 199, 200, 201, 202, 204, 205, 210, 214, 215, 228
Marphysa bellii, 9
Maupasia sp., 6, 48, 207
medusa, *Polycirrus*, 18, 169, 170, 197
Megalomma bioculata, 19
megalops, *Notopygos*, 5
Melinna huskii, 231
 cristata, 18, 157
 sp., 18, 157
Melinnantipoda antarctica, 231
Melinnata americana, 18, 158, 189, 199, 201, 203, 209, 210, 211, 212, 213, 231
Melinnexis collaris, 231
 melinnid, 18, 158, 196, 199, 213, 215
Microclymene tricurata, 16
Microbinia lineata, 10, 92, 194, 209, 227
mimica, *Glycera*, 8, 73, 188, 196, 198, 199, 200, 201, 203, 204, 205, 206, 209, 213, 215, 216, 217, 226
minima, *Leaena*, 18, 89, 90, 166, 231
 collaris, 166, 167
minor, *Drilonereis falcata*, 10, 88
 Leanira, 4, 25, 26, 195, 196, 198, 199, 200, 201, 202, 203, 204, 205, 206, 208, 209, 211, 216, 218, 224
 Lumbriclymene, 16
minusculus, *Aglaophamus*, 8, 61, 194
minuta, *Flahelligella*, 14, 119, 201, 217, 218, 221, 229
 anoculata, *Pholoe*, 26
 Pholoe, 26
 Protodorvillea, 10, 195, 216
mirabilis, *Pista*, 231
mixta, *Ephesiella*, 8, 63, 66, 309
monilaris, *Paraonides*, 11, 100, 102, 189, 203, 206, 207, 208, 210, 212, 218, 221, 223, 227, 273
Monorchos varians, 17, 151, 206, 207, 208, 216, 218
Muggoides cinctus, 18, 190
Myriochele, 145
 heeri, 17, 146, 189, 199, 201, 202, 203, 206, 207, 208, 209, 230
 pygidialis, 17, 146, 147, 194, 195, 196, 198, 199, 230
 sp., 17, 147, 201, 202, 203, 205, 206, 207, 209, 213, 214, 215, 216, 217, 218, 230
Myrioglobula antarctica, 230
Myriowenia gosnoldi, 17
Myzostomum compressum, 227
 cysticolum, 227
Naineris, 93
 quadricuspida, 10, 227
Namalycastis profundus, 7, 58, 196
nasuta, *Lumbriclymene*, 16, 230

- nationalis*, *Macellicephal*a, 224
Neanthes abyssorum, 226
neapolitana, *Paraonides*, 100, 101
nematoides, *Ammotrypane*, 229
Neolipnbranchius, 123, 186
 glabrus, 14, 122, 123, 124,
 191, 221, 229, 283
Neopaiwa, 158
 cirrata, 18, 158, 159, 191, 215,
 221, 231, 297
Neopodarke woodsholea, 6, 49, 194,
 195, 196, 200
Neosabellides elongata, 231
Neosamytha gracilis, 231
neosuecica, *Aricidea*, 11, 96, 196, 199,
 201, 202, 203, 204, 205, 209, 227,
 271
Nephtyidae 8, 60
nephtyids, 8, 62
Nephtys ferruginea, 226
 hystricis, 8, 226
 paradoxa, 8, 61, 200, 202, 203,
 221, 226
 squamosa, 8, 62, 194
Nereidae, 7, 31, 57, 187
nereids, 8, 60, 209, 210, 211, 213
Nereimyra punctata, 6, 50, 198
Nereiphylla antennata, 5, 190
 paretti, 5, 43, 194
Nereis caecoides, 7, 59, 205, 221, 226
 (*Ceratonereis*) *versipedata*, 58
 zonata, 7
 sp., 7, 59
Nerinides tridentata, 12, 191
Nicomache lumbricalis, 16, 141, 199,
 200, 230
 sp., 16
Nicon abyssalis, 225
 uncinatus, 7, 190
 sp., 7, 59, 206
nigra, *Herdmanella*, 224
nigrocincta, *Travisia*, 229
nigrorostrum, *Tharyx*, 13, 111, 197,
 207, 210, 212, 217, 228, 275
Ninoe brevipes, 10, 81, 85, 87, 197,
 198, 199, 201, 202, 203, 204, 206,
 207, 210, 218, 227, 267
 dibranchia, 10, 81, 86, 197, 207,
 208, 227, 267
 fusca, 86
 gayheadia, 10, 81, 87, 227
 sp., 87, 198, 207
Nipponophyllum, 37
nodosa, *Eunice*, 4
norvegica, *Eunice*, 9, 80, 196, 197,
 199, 226
 Goniada, 9, 76, 196, 198, 199,
 209
norvegicus, *Phylo*, 10
Notalia sp., 5, 43, 190, 216, 217, 222
Nothria abbranchiata, 226
 armandi, 226
 atlantisa, 9, 189
 conchylega, 9, 77, 79, 80, 194,
 195, 226
 iridescens, 9
 notialis, 226
 pallidula, 9, 77, 194, 195, 216
 textor, 9, 78, 207, 210, 212, 213,
 216, 217, 221, 226, 265
 sp., 9, 80, 207, 218
 notialis, *Nothria*, 226
Notomastus latericeus, 15, 138, 188,
 197, 198, 199, 200, 230
 teres, 15, 139, 197, 198, 205, 230
 sp., 15, 139, 194, 197, 201, 204,
 205, 210, 212, 213, 216, 217,
 218
Notophyllum, 37
Notoproctus, 141
 abyssus, 16, 142, 191, 198, 206,
 207, 230, 289
 oculatus, 16, 141, 144, 199, 203,
 230
 antarcticus, 230
 sp., 209
Notopygos megalops, 5
octobranchus, *Ilyphagus*, 14, 120, 189,
 195, 196, 203, 207, 210, 211, 212,
 216, 229
oculata, *Exogonita*, 7, 53, 191, 207,
 211, 221, 225, 261
 Lepidofimbria, 224
 Scalispinigera, 127
oculatus antarcticus, *Notoproctus*, 230
 Notoproctus, 16, 141, 144, 199,
 203, 230
Odontosyllis sp., 7
ohlini, *Scoloplos* (*Leodamas*), 10
Oligognathus, 89
Onuphidae, 9, 77
Onuphis conchylega, 77
 paucibranchis, 226
 quadricuspis, 9, 80, 216
Ophelia profunda, 15, 134, 216, 222
opheliid, 15, 134, 215
Opheliidae, 15, 129
Ophryotrocha sp., 10, 91, 200, 202,
 206
Orbiniella drakei, 94, 227
Orbiniidae, 10, 91
orbiniids, 11, 93, 191, 208, 210, 212,
 213, 214, 221, 227, 267
Orbiniinae, 94
ornata, *Boguella*, 17, 149, 190, 217,
 222, 230, 291
Owenia fusiformis, 17, 230

- Oweniidae, 17, 145, 148
- Paiwa, 159
- pallescens, *Glyphanostomum*, 18, 157, 196, 198, 201, 203, 216, 231
- pallidula, *Nothria*, 9, 77, 194, 195, 216
- palpata, *Braniella*, 225
- papillata, *Flabelligella*, 14, 119, 198, 216, 217, 218, 229
- Paradoneis* *abranchiata*, 11, 100, 200, 202, 203, 204, 205, 206, 208, 221, 227
- lyra*, 11, 189
- sp., 210
- paradoxa*, *Lumbrineris*, 9, 81, 83, 202, 221, 227
- Nephtys*, 8, 61, 200, 202, 203, 221, 226
- Paralacydonia*, 6
- Paralacydonia paradoxa*, 6
- Paramphinome australis*, 225
- jeffreysii*, 5, 35, 188, 194, 195, 197, 198, 199, 200, 201, 202, 203, 205, 216, 217, 225
- Paranaitis kosteriensis*, 5
- wahlbergi*, 5, 44, 197, 198, 204, 206, 207, 208, 214, 225
- Paranorthis antarctica*, 226
- atlantica*, 9, 226
- Paraonidae*, 11, 94, 187
- Paraonides*, 100
- cerruti*, 102
- monilaris*, 11, 100, 102, 189, 203, 206, 207, 208, 210, 212, 218, 221, 223, 227, 273
- neapolitana*, 100, 101
- rubriceps*, 11, 101, 189, 197, 202, 205, 206, 227
- paraonids*, 11, 103, 202, 208, 214, 217
- Paraonis* *abranchiata*, 227
- cornatus*, 11, 102, 189, 195, 198, 199, 200, 204, 205, 227
- gracilis*, 11, 102, 194, 195, 197, 204, 206
- reductus*, 11, 103, 188, 197, 198, 199, 201, 204, 208, 215, 227
- uncinatus*, 11, 103, 189, 195, 197, 202, 205, 206, 212, 214, 216, 217, 228
- Parapholoe*, 29
- tuberculata*, 29
- paretti*, *Nereiphylla*, 5, 43, 194
- Pareurythoe* sp., 5, 35, 190, 216, 222
- Paronuphis benthaliana*, 226
- bermudensis*, 9, 226
- parva*, *Aedicira*, 11, 95, 195, 196, 197, 198, 205, 211, 213, 214, 227, 271
- Pseudoscalibregma*, 14, 122, 125, 195, 197, 198, 199, 200, 201, 205, 209, 229
- parvum*, *Pseudoscalibregma*, 125
- Sphaerodorum*, 226
- patagonica*, *Eunereis*, 225
- paucibranchis*, *Onuphis*, 226
- paucidentata*, *Macellicephalo*, 24
- pectinariid*, 17, 153, 201
- Pectinariidae*, 17, 153
- Peisidice*, 29
- aspera*, 29, 30, 31
- bermudensis*, 4, 30, 190, 216, 222, 249
- tuberculata*, 30
- Peisidicidae*, 4, 28
- Peisidicinae*, 28
- pennata*, *Eunice*, 80
- peripatus*, *Bebryce*, 65
- Ephesiella*, 65
- Pollicita*, 65
- Sphaerodorum*, 65
- Petta assimilis*, 230
- Phalacrophorus pictus*, 6, 215
- Phalacrostemma cidariophilum*, 17, 151, 217
- elegans*, 17, 152, 208, 209, 210, 212, 213, 214, 215, 221, 230, 293
- Pherusa*, 114
- sarsi*, 229
- philippi*, *Sphaerodoropsis*, 70, 71
- Sphaerodorum*, 70
- Pholoe anoculata*, 4, 25, 26, 189, 197, 198, 200, 225, 249
- minuta*, 26
- anoculata*, 26
- sp., 4, 27, 199, 201, 202
- Phyllampharete*, 160, 220
- longicirra*, 18, 160, 161, 191, 215, 221, 231, 299
- Phyllochaetopterus*, 45
- sp., 13, 109, 197, 198, 199, 200, 201, 204, 205, 206, 208, 218
- Phyllodocidae*, 5, 36, 39, 187
- phyllodocids*, 5, 46, 191, 209, 210, 212, 213, 214, 215, 218
- Phyllodocinae*, 37
- Phylo felix*, 10, 92, 194, 195
- norvegicus*, 10
- pictus*, *Phalacrophorus*, 6, 215
- pilargid*, 7, 51
- Pilargidae*, 6, 50
- Pionosyllis procera*, 7, 190
- Pirakia*, 44
- lanceolata*, 5, 44, 197, 198, 200, 210, 225, 259
- punctifera*, 44, 45
- Pisone*, 31, 32
- abyssorum*, 221
- longipalpa*, 32
- Pisionella*, 31, 32
- Pisionidae*, 4, 31, 187

- Pisionidens, 31, 32
 Pisionura, 32, 220
 abyssorum, 4, 32, 33, 190, 215, 225
 253
 Pista abyssicola, 231
 cristata, 18, 167, 195
 mirabilis, 231
 spinifera, 231
 planiceps, Isocirrus, 16, 140, 208, 209,
 210, 211, 230
 Platynereis dumerilii, 7, 59, 209
 sp., 8, 59
 poecilochaetid, 13, 108
 Poecilochaetidae, 12, 107
 Poecilochaetus bermudensis, 12, 107,
 190, 217, 222, 228
 fulgoris, 12, 107, 197, 198
 sp., 13, 108, 150, 204, 214, 215
 polaris, Clymenura, 16, 140
 Pollicita peripatus, 65
 Polycirrinae, 165, 169
 Polycirrus, 169
 albicans, 18, 170, 195
 medusa, 18, 169, 170, 197
 Polydora caulleryi, 12, 188
 sp., 12, 104, 194
 Polyeunoa rhombigera, 224
 Polynoidae, 4, 20
 polynoids, 4, 25, 211
 posterobranchus, Aglaophamus, 226
 Potamethus scotiae, 231
 singularis, 19, 180, 189, 197, 198,
 206, 215, 231
 sp., 194
 praetermissa, Praxillella, 16, 144, 199,
 200, 202, 206, 230
 Praxillella abyssorum, 230
 gracilis, 16, 144, 197, 200, 230
 praetermissa, 16, 144, 199, 200,
 202, 206, 230
 sp., 16, 145, 202, 204, 208, 209,
 210, 214
 Praxillura longissima, 16
 Prionospio cirrifera, 12, 104, 189, 195,
 200
 delta, 12, 191, 222
 ehlersi, 12, 105, 197
 stenstrupi, 12, 105, 188, 202,
 204, 205, 206, 215, 228
 sp., 12, 105, 194, 197, 198, 199,
 200, 201, 202, 203, 204, 205,
 207, 209, 211, 212, 214, 215,
 216, 217, 218
 procera, Pionosyllis, 7, 190
 profunda, Exogone verugera, 7, 52
 Glycinde, 8, 74, 202, 207, 209,
 211, 215, 218, 221, 226, 253
 Ophelia, 15, 134, 216, 222
 Weddellia, 231
 profundus, Travisia, 229
 profundus, Euzonus, 229
 Namalycastis, 7, 58, 196
 Progoniada regularis, 9, 76, 194, 204,
 206, 207, 208, 210, 211, 212, 214,
 215, 216, 217, 226
 sp., 212
 prolonga, Zeppelina, 13, 190, 228
 Proscalibregma lineata, 229
 Protoariciinae, 94
 Protodorvillea minuta, 10, 195, 216
 sp., 10, 91, 198
 Protomystides bidentata, 5, 46, 194
 Protothelopus tenuis, 174
 Psammolyce globula, 4, 25, 27, 190,
 222, 251
 sp., 216
 Pseudocapitella incerta, 15
 Pseudomystides limbata punctata, 5,
 46, 195, 197, 198, 200, 201, 202,
 204, 205, 206, 207, 208, 209, 210,
 214, 217, 225
 Pseudoscalibregma aciculata, 14, 122,
 124, 199, 201, 202, 203, 211, 214,
 221, 229
 parva, 14, 122, 125, 195, 197,
 198, 199, 200, 201, 205, 209,
 229
 parvum, 125
 sp., 14, 125, 201
 punctata, Castalia, 50
 Nereimyra, 6, 50, 198
 Pseudomystides limbata, 5, 46,
 195, 197, 198, 200, 201, 202,
 204, 205, 206, 207, 208, 209,
 210, 214, 217, 225
 punctifera, Pirakia, 44, 45
 pupa, Braniella, 7, 51, 195, 206, 207,
 211, 213, 218, 225
 pygidialis, Myriochele, 17, 146, 147,
 194, 195, 196, 198, 199, 230
 quadrangularis, Serpula, 184
 quadricuspida, Naineris, 10, 227
 quadricuspis, Onuphis, 9, 80, 216
 reductus, Paraonis, 11, 103, 188, 197,
 198, 199, 201, 204, 208, 215, 227
 regularis, Progoniada, 9, 76, 194, 204,
 206, 207, 208, 210, 211, 212, 214,
 215, 216, 217, 226
 Rhamphobranchium agassizi, 9, 191,
 226
 Rhodine gracilior, 16
 sp., 16, 145, 206, 207, 210
 rhombigera, Polyeunoa, 224
 robusta, Lumbriclymenella, 230
 roseus, Filibranchus, 19
 rubriceps, Paraonides, 11, 101, 189,
 197, 202, 205, 206, 227
 rudolphi anoculata, Dorvillea, 10, 90,
 195, 196, 197, 200, 216

- sabella*, Fabricia, 19
sabellariid, 17, 152, 206, 207, 218
Sabellariidae, 17, 151
Sabellidae, 19, 179
sabellids, 19, 181, 206, 209, 214, 215, 216, 217, 218
Samytha sexcirrata, 18, 162, 194, 197
Samythella elongata, 18, 163, 200, 231
sanguinea, Eumida, 44
sargassoensis, Amphicteis, 17, 154, 207, 208, 209, 211, 213, 215, 218, 221, 230, 295
sarsi, Antinoella, 21
 Maldane, 16, 141, 195, 196, 198, 206, 230
 Pherusa, 229
scabra, Fauvelinopsis, 14, 115, 117, 189, 195, 196, 198, 199, 201, 202, 203, 206, 207, 208, 209, 210, 211, 215, 216, 217, 218, 228, 279
Scalibregma inflata, 14, 122, 125, 229
 inflatum, 125
Scalibregmella, 125
 antennata, 14, 122, 125, 126, 212, 214, 215, 221, 229, 285
Scalibregmidae, 14, 122, 127, 187
scalibregmids, 14, 93, 125, 129, 202, 205, 217, 229
Scalispinigera, 127
 cirrata, 14, 122, 128, 191, 200, 221, 229, 285
 oculata, 127
schmitti, Califa, 10, 91, 196, 197, 198, 214, 227
Sclerobregma branchiata, 14, 122, 129, 198, 229
Scoloplns, 93
 (Lendamus), 92
 marginatus, 227
 ohlini, 10
 sp., 10, 92, 197, 201, 202, 204, 205, 209, 210, 212, 217
scotiae, Potamethus, 231
sculpta, Amage, 230
Serpula quadrangularis, 184
Serpulidae, 19, 181
serpulids, 20, 184, 217, 218
Serpulinae, 181, 183
setosa, Chaetozoue, 13, 110, 188, 195, 206, 213, 217, 228
setubalensis, Euthelepus, 171, 174
sexcirrata, *Samytha*, 18, 162, 194, 197
sibogae, Amphicteis, 155
Sigalionidae, 4, 25, 29, 32
sigalionids, 4, 28, 216, 217
Sigambra tentaculata, 6, 50, 197, 199, 210, 212, 215, 218, 225
singularis, Potamethus, 19, 180, 189, 197, 198, 206, 215, 231
Sosanela apalea, 18, 190
Sphaerodoridae, 8, 62
Sphaerodoridium antarcticum, 226
 sp., 69, 72
Sphaerodoropsis, 69
 biserialis, 70, 71
 corrugata, 8, 63, 69, 73, 195, 198, 204, 205, 206, 208, 226, 313
 elegans, 8, 63, 71, 191, 204, 218, 226, 313
 longipalpa, 8, 63, 72, 194, 197, 198, 200, 217, 226, 313
 philippi, 70, 71
 sphaerulifer, 69
Sphaerodorum, 68
 abyssorum, 65
 biserialis, 70
 gracilis, 65
 parvum, 226
 peripatus, 65
 philippi, 70
 sp., 65, 68, 206
Sphaerosyllis brevifrons, 7, 55, 194, 195, 197, 198
 hystrix, 7
sphaerulifer, *Sphaerodoropsis*, 69
spinifera, Pista, 231
spinulosa, Eunoe, 4, 23, 203, 221, 224
Spionidae, 11, 12, 104
spionids, 12, 106, 208, 209, 210, 211, 212, 214, 216, 217, 218, 221, 228
Spiophanes bombyx, 12
 kroyeri, 12, 105, 188, 194, 195, 197, 198, 201, 202, 203, 205, 206, 207, 208, 209, 210, 228
 wigleyi, 12, 189
 sp., 12, 106, 188, 199, 200, 204, 207, 210, 212, 214, 215, 218
Spirodiscus, 183
 grimaldii, 19, 183, 214, 216, 217, 231
spirorbid, 20, 183, 184, 211, 212, 213, 214, 215
Spirorbinae, 183
 squamosa, *Nephtys*, 8, 62, 194
 steenstrupi, *Prionospio*, 12, 105, 188, 202, 204, 205, 206, 215, 228
Stelechopus hydrocrini, 227
Sternaspidae, 15, 135
Sternaspis fossor, 15
 sp., 15, 135, 205
Sthenelais verruculosa, 28
 sp., 4, 25, 27, 190, 217, 222, 251
Sthenolepis tetragona, 4, 25, 28, 197
Streblosoma sp., 19
stroemii, *Terebellides*, 18, 89, 177, 178, 189, 194, 195, 198, 199, 200, 202, 203, 204, 231
suecica, *Aricidea*, 11, 97, 189, 197, 198, 200
Syllidae, 7, 51

- syllids, 7, 57, 215
 Syllis sp., 216
 Synelmis albini, 7, 51, 200, 216, 217, 221, 225
 Tachytrypae jeffreysii, 15, 134, 201, 202, 204, 205, 210, 221, 229
 tegulum, Typosyllis, 7, 56, 190, 194, 263
 Telepsavus costarum, 109
 sp., 13, 109, 214
 tentaculata, Ancistrostylis, 50
 Sigambra, 6, 50, 197, 199, 210, 212, 215, 218, 225
 tenuis, Euthelepus, 174
 Lumbrineris, 9, 81, 83, 195, 196
 Protothelepus, 174
 Terebellidae, 18, 165, 171
 Terebellides lobatus, 19, 175, 198, 202, 204, 211, 212, 213, 215, 222, 231, 305
 stroemii, 19, 89, 177, 178, 189, 194, 195, 198, 199, 200, 202, 203, 204, 231
 sp., 19, 178, 210, 213, 214, 215, 231
 terebellidis, Haematocleptes, 88, 89, 90
 terebellids, 19, 174, 212, 216, 218, 222
 teres, Notomastus, 15, 139, 197, 198, 205, 230
 tessellata, Glycera, 8, 74, 199, 226
 tetrabranchia, Aricidea, 11, 98, 189, 196, 197, 198, 199, 200, 201, 204, 206, 218, 227, 271
 tetragona, Sthenolepis, 4, 25, 28, 197
 textor, Nothria, 9, 78, 207, 210, 212, 213, 216, 217, 221, 226, 265
 Tharyx annulosus, 13, 111, 188, 195, 197, 202, 205, 206, 208, 228
 marioni, 13, 111, 188, 197, 198, 199, 200, 201, 202, 204, 205, 210, 214, 215, 228
 nigrorostrum, 13, 111, 197, 207, 210, 212, 217, 228, 275
 sp., 13, 112, 196, 200, 202, 204, 207, 208, 211, 212, 213, 216, 217, 218
 Thelepides koehleri, 231
 Thelepiniae, 165, 171
 Thelepus cinnamatus, 231
 Therochaeta, 114
 collarifera, 14, 121, 194, 196
 Tomopteridae, 6, 49
 Tomopteris sp., 6, 49, 194, 198, 207, 208, 209, 214
 Travia, antarctica, 229
 forbesii, 15
 gravieri, 134
 nigrocincta, 229
 profundi, 229
 Travisiopsis lanceolata, 6, 200
 Trichobranchidae, 19, 175, 187
 trichobranchids, 19, 179, 202, 212, 218
 Trichobranchus americanus, 19, 178, 196
 trichophora, Amphicteis, 17, 155, 195, 201, 205, 230
 tricirrata, Microclymene, 16
 tridentata, Nerinides, 12, 191
 trilobata, Amaea, 169
 Amaeana, 18, 169, 170, 231
 tuberculata, Paraphloe, 29
 Peisidice, 30
 tubicola, Hyalinocelia, 9, 77, 195
 typhloscolecoid, 6, 49, 209, 215
 Typhloscolecidae, 6, 49
 Typhloscolex sp., 6, 49, 214
 typicus, Apistobranchus, 11, 104, 195
 Typosyllis tegulum, 7, 56, 190, 194, 263
 sp., 7, 57, 216
 uncinatus, Lopadorrhynchus, 6, 47, 206, 210, 212
 Nicon, 7, 190
 Paraonis, 11, 103, 189, 195, 197, 202, 205, 206, 212, 214, 216, 217, 228
 Unobranchus, 220
 abyssalis, 19, 178, 211, 214, 215, 221, 231, 307
 uschakovi, Aricidea, 227
 Vanadis sp., 6, 47, 209
 varians, Hermella, 151
 Monorchos, 17, 151, 206, 207, 208, 216, 218
 Vermiliopsis langerhansi, 20, 181, 200, 221, 231
 sp., 216
 verruculosa, Sthenelais, 28
 versipedata, Ceratonereis, 7, 58, 201, 202, 207, 209, 216, 221, 225
 Nereis (Ceratonereis), 58
 verugera profunda, Exogone, 7, 52
 vestis, Amphicteis, 17, 156, 189, 194, 203, 230
 villosa, Brada, 14, 114, 195
 violacea, Macellicephalata, 24
 wahlbergi, Paranaitis, 5, 44, 197, 198, 204, 206, 207, 208, 214, 225
 watsoni, Disoma, 12, 107, 195, 196, 197, 198, 199, 206, 228
 Weddellia profunda, 231
 wigleyi, Spiophanes, 12, 189
 woodsholea, Neopodarke, 6, 49, 194, 195, 196, 200
 wyvillei, Ilyphagus, 229
 zebuensis, Artacama, 168
 Zeppelina prolonga, 13, 190, 228
 zetlandica, Caulleriella, 13
 zonata, Nereis, 7

