

February 2007

THE

Volume 212 • Number 1

# BIOLOGICAL BULLETIN



**MBL**

Biological  
Discovery  
in Woods Hole

Published by the Marine Biological Laboratory

## Cover

Chaetopterid polychaetes, distinctive members of nearly all benthic marine communities, have larvae that may spend months in the plankton before settling to live their adult lives in parchment-like tubes attached to the sea floor. The cover image shows an extraordinary new species, *Chaetopterus pugaporcinus*, that may have relinquished the benthic portion of its life and made itself permanently at home in the pelagic realm. *Chaetopterus pugaporcinus* possesses the same combination of larval and adult features regardless of the size of the specimen (1 to 2 cm), and it has lost features associated with benthic life that were previously thought to be characteristic of the family. The species is reliably found off the coast of California at about 1000 m, regardless of the seafloor depth. One of its 15 segments is greatly expanded, while the others are compressed to the anterior and posterior poles of the decidedly non-vermiform body.

On pages 40-54 of this issue, Osborn et al. describe this new species and its ecology. On the basis of three genes, they provide the first hypothesis for a Chaetopteridae phylogeny. The new species is a recently derived member of *Chaetopterus*, a genus fraught with taxonomic controversy yet used repeatedly in developmental, ecological, and physiological research. The authors provide molecular support for morphological research showing that *Chaetopterus variopedatus* is a species complex, and they provide evidence that unrestricted dispersal ability does not necessarily lead to cosmopolitan species. *Chaetopterus pugaporcinus* may represent a logical step in the evolution of a group with long-lived pelagic larvae and may be a modern representative of the many historic invasions of the oceans' midwaters by benthic invertebrates.

**Credits:** Photo, Karen J. Osborn (Monterey Bay Aquarium Research Institute); cover layout, Beth Liles, (Marine Biological Laboratory).

## Description and Relationships of *Chaetopterus pugaporcinus*, an Unusual Pelagic Polychaete (Annelida, Chaetopteridae)

KAREN J. OSBORN<sup>1,\*</sup>, GREG W. ROUSE<sup>2,†</sup>, SHANA K. GOFFREDI<sup>3</sup>,  
AND BRUCE H. ROBISON<sup>1</sup>

<sup>1</sup>Monterey Bay Aquarium Research Institute, 7700 Sandholdt Rd., Moss Landing, California 95039;  
<sup>2</sup>South Australian Museum, Nth Terrace, Adelaide, SA 5000, Australia; and <sup>3</sup>California Institute of Technology, Dept. Environmental Science and Engineering, MC 138-78, 1200 East California Blvd., Pasadena, California 91125

**Abstract.** An extraordinary new species, *Chaetopterus pugaporcinus*, is described from eight specimens collected from deep mesopelagic waters off Monterey Bay, California, by remotely operated vehicles. All specimens exhibit a consistent combination of both adult and larval characteristics, leaving in question the maturity of the specimens. All specimens lack ciliated larval bands and the stout, modified chaetae (cutting spines) typically found in segment A4 of chaetopterids. If the specimens described here are larvae, they are remarkable for their size, which ranged from 10 to 21 mm total length, nearly twice the length of the largest polychaete larvae previously reported and 5 to 10 times larger than known chaetopterid larvae. Then too, their lack of segment addition prior to settlement would be atypical. If adult, they are particularly unusual in their habitat choice and body form. Morphology of the uncini and comparison to larval morphology indicated a close relationship to either *Chaetopterus* or *Mesochaetopterus*. However, the lack of cutting spines and typical adult morphology made it impossible to determine to what genus this species should be allied. Thus, we carried out the first molecular phylogenetic analysis of the Chaetopteridae in order to appropriately place and name the new species. Three partial genes were sequenced for 21 annelid species. The sequencing also provides the first molecular evidence that *Chaetopterus variopedatus sensu* Hartman (1959) is not a single cosmo-

politan species. The question of *C. pugaporcinus* being a delayed larva or a genuine holopelagic chaetopterid is discussed.

### Introduction

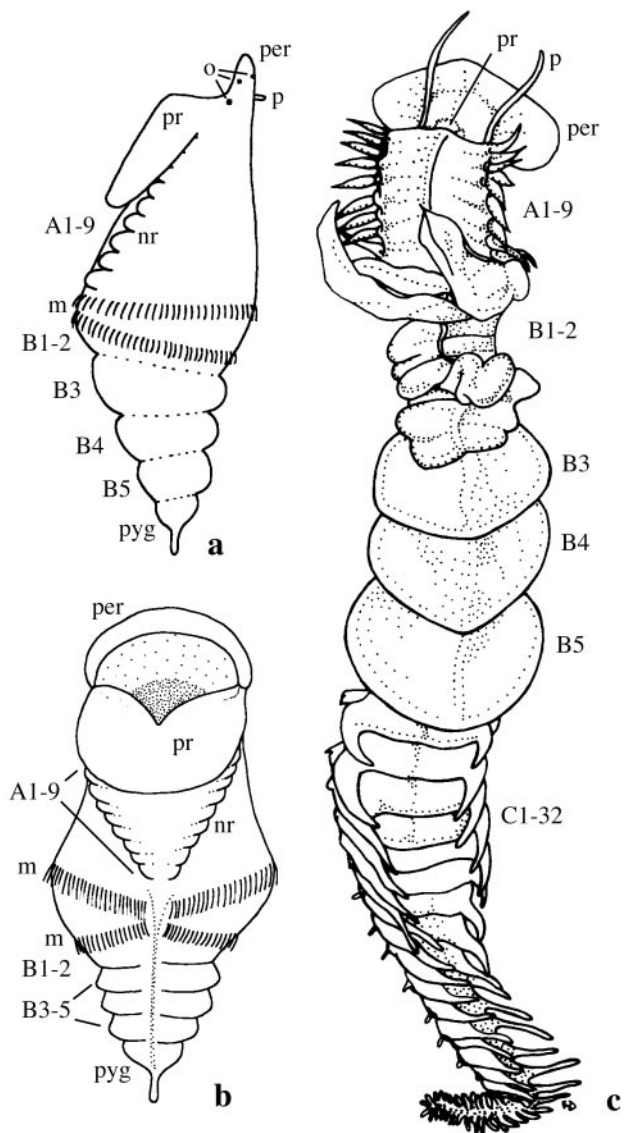
Chaetopterids are an unusual polychaete group. All previously described species are benthic and tubicolous as adults. They have a body divided into three distinct regions—anterior, middle, and posterior—hereafter referred to as A, B, and C (after Crossland, 1904; Bhaud *et al.*, 1994; Fig. 1c). Their larvae have a unique barrel-like form with one or two ciliated bands at the midsection and a large buccal funnel (Fig. 1a, b). Chaetopterid larvae are some of the largest among polychaetes, typically ranging in size from 0.4 to 2.5 mm. The largest polychaete larvae reported, with a maximum length of 12 mm, are the late stage of an unknown phyllocid species (Tzetlin, 1998). Those phyllocid larvae consisted of a trochophore body and rudimentary adult trunk comprising up to 120 chaetigerous segments. Nozais *et al.* (1997) reported *Poecilochaetus* larvae with up to 50 segments and reaching nearly 10 mm. Late-stage spionid and *Magelona* larvae have been reported to be nearly 5 mm. Most polychaete larvae, however, seldom exceed 1.3 mm (Bhaud and Cazaux, 1987).

The taxonomy and systematics of the Chaetopteridae have never been comprehensively revised, and there is continuing confusion over the number of accepted species. For instance, Hartman (1959), following a suggestion by Fauvel (1927), synonymized all 25 *Chaetopterus* species into the single highly variable species *C. variopedatus*,

Received 14 November 2005; accepted 24 October 2006.

\* To whom correspondence should be addressed. E-mail: oska@mbari.org

† Current address: Marine Biological Research Division, Scripps Institution of Oceanography, La Jolla, CA 92093-0202.



**Figure 1.** *Chaetopterus* L5 larvae (a) left lateral view and (b) dorsal view, redrawn from Irvine *et al.* (1999). (c) *Chaetopterus* adult, redrawn from Uschakov (1955). A, B, or C# = region A, B, or C chaetigers, m = mesotroch, nr = notopodial rudiment, o = ocellus, p = palp, per = peristomium, pr = prostomium, pyg = pygidium.

suggesting that the species were local populations and reliable specific distinctions had not yet been found. In part this view of *Chaetopterus* may be due to the extended planktonic larval periods of some species whose larvae may remain in the water column for several months to over a year. Scheltema (1974) determined that the length of time chaetopterid larvae spend in the water column would easily allow their dispersal across ocean basins. This speculation supported the hypothesis of widespread genetic mixing and consequent taxonomic “lumping” to form large, cosmopolitan species complexes such as *Chaetopterus variopedatus* (Renier, 1804) and *Spiochaetopterus costarum* (Claparède,

1868). *C. variopedatus* is now considered a species complex that contains at least 18 species (Petersen, 1984a, b, 1997; Bhaud, 1998), though the redescrptions are yet to be formalized. Similarly, *S. costarum* has been shown to be a species complex (Bhaud and Fernandez-Alamo, 2000; Bhaud and Petti, 2001; Bhaud, 2003; Bhaud *et al.*, 2003). Careful examination of *Spiochaetopterus* showed that, despite widespread larval dispersal, adult distributions of given species are far more limited than previously expected (Bhaud, 2003).

We describe here a new species, *Chaetopterus pugaporcinus* (Fig. 2), based on specimens that may be larvae or adults. We also present a phylogenetic analysis based on molecular data for the Chaetopteridae and provide the first molecular evidence to refute Hartman’s proposal (Hartman, 1959) that *Chaetopterus variopedatus* is a single cosmopolitan species.

**Materials and Methods**

Eight specimens of the new species were observed and collected from the midwaters of Monterey Bay, California (Table 1), from 2001 to 2006. All *in situ* observations were made with the remotely operated vehicles *Ventana* or *Tiburón* (Robison, 1993). The ROV *Ventana* video system consisted of a Sony high-definition HDC-750A camera; the ROV *Tiburón* system was a Panasonic high-resolution, three-chip video camera. Video was recorded on high-quality BetaCam or HDTV tapes for subsequent analysis, and



**Figure 2.** *Chaetopterus pugaporcinus*. Dorsal view of live animal, anterior end oriented down as always found *in situ*. The peristomium, prostomium, notopodia of chaetigers A3 through 9 and uncinal plate of A9 are visible, as is the middorsal ciliated groove. Palps are just discernible as two small lumps projecting below the peristomium. The anterior portion of chaetiger B2 is just visible at the top of the image.

Table 1

*Chaetopterus pugaporcinus* collection information

Date	Location near Monterey Bay, CA	Accession no.	Fixative (fixative, preservative)	Depth (m; collection, seafloor)	Temp. (°C)	Salinity (PSU)	Oxygen (ml/l)
1 Oct. 2001	36.57°N, 122.52°W	SAM E3509	Formalin	1221, 3500	3.4	34.5	0.56
13 Dec. 2001	36.69°N, 122.05°W	n/a	Frozen, ethanol	990, 1600	4.0	34.5	0.39
3 Dec. 2002	36.69°N, 122.05°W	SAM E3508	Formalin, ethanol & sectioned	1121, 1600	3.6	34.5	0.52
16 Dec. 2004	36.32°N, 122.89°W	Holotype LACM-AHF POLY 2173	Formalin, ethanol	1029, 3500	3.8	34.4	0.41
25 Mar. 2005	36.34°N, 122.29°W	Paratype LACM-AHF POLY 2174	Glutaraldehyde, formalin	965, 3000	3.9	34.4	0.34
9 Aug. 2005	36.71°N, 122.06°W	Paratype LACM-AHF POLY 2175	Glutaraldehyde, formalin	875, 1600	4.3	34.5	0.24
10 May, 2006	36.60°N, 122.38°W	n/a	Formalin	1098, 1600	3.69	34.4	0.50
24 Jun. 2006	36.65°N, 122.12°W	n/a	Glutaraldehyde	1203, 2100	3.48	34.4	0.56

these are housed in the video archive at the Monterey Bay Aquarium Research Institute. Specimens were captured in 7.5-l detritus samplers, which preclude the crushing and abrasion typically inflicted on soft-bodied animals by nets (Robison, 1993). Specimens were transferred directly from the ROV to still-water aquaria at *in situ* temperatures, where they were observed and photographed. Live specimens were photographed with a Nikon Coolpix 5000 as macro shots in the aquaria, as well as through a Nikon BH-2 compound microscope. Line drawings were produced both from digital images and by using a camera lucida attached to the microscope.

Fecal pellets were collected from four specimens. Pellets were removed from the still-water aquaria in which the live specimens were held from time zero until 6 days after collection. Pellets were removed with a glass pipette and placed into 2% glutaraldehyde in filtered seawater with 0.1 mol l<sup>-1</sup> sodium cacodylate. Pellets were shredded with fine dissecting needles in the fixative to create a slurry, filtered onto 0.2- $\mu$ m-pore polycarbonate filters (Osmonics, Inc.), air-dried, and coated with gold-palladium. Stubs were viewed on an ISI WB6 scanning electron microscope and digital images were captured.

### Taxa

Two specimens (labeled 13 Dec. 2001 and 3 Dec. 2002 in Table 1) of the new species were destroyed for sequencing. Additional *Chaetopterus* were obtained from four locations (Table 2) to address the validity of the cosmopolitan species complex (Petersen, 1984a, b; Petersen and Britayev, 1997). Throughout this paper, we differentiate *Chaetopterus* specimens either as undescribed—when their morphology and locality do not match any previously published—or as *sensu* the original description name. Representatives of the remaining chaetopterid genera, *Mesochaetopterus*, *Phyllochaetopterus*, and *Spiochaetopterus*, were obtained to complete the ingroup sampling. There is no hypothesis for the sister group to the Chaetopteridae, thus nine taxa were selected as outgroup terminals (Table 2) spanning the large

polychaete clade Canalipalpata that contains the Chaetopteridae. Terminals included examples from Sabellida, Cirratuliformia, Terebelliformia, and Spionida (*sensu* Rouse and Pleijel, 2001); unfortunately, specimens of *Magelona* and *Apistobranchus*, two candidate sister taxa, were unattainable for inclusion in this project. Specimens (Table 2) were collected intertidally, using scuba, or from deep water with the ROV *Tiburon*.

### Genetic data collection

Worms used for genetic data collection were placed in 70% to 95% ethanol after collection. Voucher specimens were placed in the Los Angeles County Museum of Natural History (LACM) or the South Australian Museum (SAM) along with the types (see Table 2 for accession numbers). If a specimen was large enough (greater than 0.05 g), tissue was cut from the midsection of the worm for DNA extraction, and the remains were preserved in formalin as the voucher. Genomic DNA was extracted from specimens by using DNAzol genomic DNA isolation reagent (Molecular Research Center, Inc., Cincinnati, OH) with the following modifications to the manufacturer's instructions. A 1- to 2-mm<sup>2</sup> cube of tissue was homogenized in 500  $\mu$ l of DNAzol reagent and placed in a rotating incubator at room temperature for 24–72 h. For each 24-h period, 10  $\mu$ l of 10 mg/ml proteinase kinase was added. To help visualize the DNA, 2  $\mu$ l of polyacryl carrier was added to each extraction. DNA was extracted from specimens of *Paralvinella grasslei* Desbruyères & Laubier, 1982; *Gunnarea capensis* Johansson, 1927; *Terebellides stroemii* Sars, 1835; *Spirorbis spirorbis* (Linnaeus, 1758); *Manayunkia athallasia* Hutchings *et al.*, 1981; *Dodecaceria concharum* Oersted, 1843; and *Pectinaria granulata* (Linnaeus, 1767) by using the Qiagen DNeasy tissue kit (Valencia, CA) according to the manufacturer's instructions.

An approximately 1800-bp fragment of small subunit ribosomal (18S) DNA was amplified with universal primers mitchA (5'-CAACCTGGTTGATCCTGCCAGT-3') and mitchB (5'-

Table 2

Collection data and sequence information for outgroup and chaetopterid specimens

Taxon	18S GenBank Acc. #	28S GenBank Acc. #	COI GenBank Acc. #	Museum Acc. # (voucher)	Collection Locality
<b>Outgroups</b>					
<i>Dodecaceria concharum</i> Oersted, 1843 Cirratulidae	AY577891	DQ209242	DQ209262	SAM E3355	Iceland
<i>Paralvinella grasslei</i> Desbruyères & Laubier, 1982 Alvinellidae	AY577886	N/A	DQ209259	SAM E3388	Pacific
<i>Glyphanostomum</i> sp. Ampharetidae	DQ209225	DQ209240	DQ209260	SAM E3517	Monterey Bay, CA
<i>Pectinaria granulata</i> (Linnaeus, 1767) Terebelliformia	AY577890	DQ209239	DQ209258	SAM E3358	Iceland
<i>Terebellides stroemii</i> Sars, 1835 Terebelliformia	AY577893	DQ209241	DQ209261	SAM E3359	Iceland
<i>Prionospio</i> Spionidae	DQ209226	DQ209246	DQ209266	SAM E3516	Monterey Bay, CA
<i>Manayunkia athallasia</i> Hutchings <i>et al.</i> , 1981 Sabellidae	N/A	DQ209245	DQ209265	SAM E3518	South Australia
<i>Spirorbis spirorbis</i> (Linnaeus, 1758) Serpulidae	AY577887	DQ209244	DQ209264	SAM E3357	Iceland
<i>Gunnarea capensis</i> Johansson, 1927 Sabellariidae	AY577892	DQ209243	DQ209263	SAM E3360	South Africa
<b>Ingroup Chaetopteridae</b>					
<i>Spiochaetopterus bergensis</i> (Gitay, 1969)	DQ209214	DQ209229	N/A	SAM E3558	Spitsbergen, Norway
<i>Phyllochaetopterus</i> sp. 3	DQ209215	DQ209230	DQ209249	SAM E3512	Sydney, Australia
<i>Phyllochaetopterus</i> sp. 1	DQ209213	DQ209228	DQ209248	SAM E3514	Monterey Bay, CA
<i>Phyllochaetopterus</i> sp. 2	DQ209216	DQ209231	DQ209250	SAM E3513	Sydney, Australia
<i>Phyllochaetopterus socialis</i> Claparède, 1868	DQ209212	DQ209227	DQ209247	N/A	Roscoff, France
<i>Mesochaetopterus taylori</i> Monro, 1928	DQ209217	DQ209232	DQ209251	SAM E3570	Friday Harbor, WA
<i>Mesochaetopterus japonicus</i> Fujiwara, 1934	DQ209218	N/A	N/A	SAM E3571	Kyushu, Japan
<i>Chaetopterus sarsii</i> Boeck, 1861	DQ209221	DQ209235	DQ209254	SAM E3557	Trondheimsfjord, Norway
<i>Chaetopterus</i> sp. 1	DQ209219	DQ209233	DQ209252	SAM E3511	Santa Barbara, CA
<i>Chaetopterus</i> sp. 2	DQ209222	DQ209236	DQ209255	N/A	Banyuls, France
<i>Chaetopterus</i> cf. <i>luteus</i> Stimpson, 1856	DQ209220	DQ209234	DQ209253	SAM E3510	South Australia
<i>C. pugaporcinus</i> (2 specimens)	DQ209224, DQ209223	DQ209238, DQ209237	DQ209257, DQ209256	LACM POLY 2173-2175	Monterey Bay, CA

TGATCCTTCCGCAGGTTACCTAC-3') modified from Medlin *et al.* (1988). The amplification profile was optimized for each extraction: 35 ramping cycles of 94 °C for 60 s, 58–64 °C for 60 s, 72 °C for 90–120 s, with an initial single denaturation step at 94 °C for 3 min and a final single extension step at 72 °C for 4–7 min. An approximately 650-bp fragment of the mitochondrial *COI* gene was amplified using primers HCO2198 (5'-TAAACTTCAGGGTGACCAAAAATC-A-3') and LCO1490 (5'-TCAACAAATCATAAAGATAT-TGG-3') (Folmer *et al.*, 1994). The amplification profile was optimized for each extraction, optionally with a touch-down of five cycles of 94 °C for 60 s, 45 °C for 90 s, 72 °C for 60 s, and then 35 cycles of 94 °C for 30–40 s, 51 °C for 30–90 s, 72 °C for 60 s, with an initial single denaturation step at 94 °C for 60–120 s and a final single extension step at 72 °C for 5–7 min. An approximately 1100-bp fragment of large subunit ribosomal (28S) DNA was amplified with modified universal primers (Lenaers *et al.*, 1989) LSUD1F (5'-ACCCGCTGAATTTAAGCATA-3') and D3ar (5'-ACGAACGATTTGCACGTCAG-3'). The amplification profile was optimized for each extraction: 35 cycles of 94 °C for 40–60 s, 60 °C for 30–60 s, 72 °C

for 70–120 s, with an initial single denaturation step at 94 °C for 5 min and a final single extension step at 72 °C for 5–7 min.

PCR products were either sequenced directly after spin column purification (Ultrafree-DA columns, Millipore, Billerica, MA), following the manufacturer's protocol or, in a few cases, cloned according to the manufacturer's protocol of the Invitrogen (Carlsbad, CA) TOPO cloning kit. In the latter case, three to six colonies were chosen for plasmid DNA purification using a QIAprep spin miniprep kit (Qia-gen, Valencia, CA). Plasmid DNA was digested with *EcoRI* to check for correct-size inserts. Cloned DNA was sequenced in both directions using M13 primers. All direct sequencing was carried out using the same primers that were used in the amplification, with the addition of three internal primers for 18S (514F 5'-TCTGGTGCCAGCAGC-CGCGG-3'; 1055F 5'-GGTGGTGCATGGCCG-3'; 1055R 5'-CGGCCATGCACCACC-3'). All sequencing was carried out with the BigDye terminator ver. 3.1 sequencing kit and analyzed on an ABI 3100 capillary sequencer (Applied Biosystems, Foster City, CA). Sequences were deposited in GenBank (accession numbers are listed in Table 2).

### Analysis

At least two of the three gene sequences were obtained from most samples (Table 2), with the exception of one ingroup taxon, *Mesochaetopterus japonicus*. The topology of the trees did not change whether or not taxa with missing sequences were included. We used a criterion that sequences could only be concatenated for a combined analysis when sequenced from the same individual. None of the previous chaetopterid sequences available from GenBank met this criterion; thus no sequences from GenBank were used in the final analyses.

Sequences were aligned with T-coffee (Notredame *et al.*, 2000) and proofread by eye in MacClade ver. 4.04 OS X (Maddison and Maddison, 2000). Four separate preliminary Bayesian analyses were run on the aligned sequences with differing amounts of the alignments excluded. The most conservative analysis excluded any base for which any sequence contained a gap; the most inclusive included all regions. Two other analyses contained intermediate amounts of ambiguously aligned bases: one more conservative, in which any base for which 8 or more taxa had a gap was removed; the other less conservative, in which any base for which 16 or more taxa had a gap was removed. All were run as described below for the final Bayesian analyses but with only 11 million generations. No differences in ingroup generic relationships or in the relative support for the clades of interest were found among the four analyses; thus arbitrary removal of data was avoided by retention of all bases in subsequent analyses (see supplementary material at <http://www.biolbull.org/supplemental/>). No ambiguously aligned bases were removed from the final analyses (*18S* = 12.3% ambiguously aligned; *28S* = 14.3% ambiguously aligned; *COI* = 0% ambiguously aligned). The alignments are deposited in GenBank and TreeBase, and are available from KJO.

Parsimony analyses were conducted with the PAUP 4.0b10 software package (Swofford, 2002). Parsimony trees were reconstructed from an equally weighted character matrix and the heuristic search option, using the tree-bisection-reconnection branch-swapping algorithm and 1000 random addition replicates. Gaps were treated as missing data because of the four taxa with missing sequences. Bootstrap and jackknife (37% deletion) values were obtained with the same settings as the parsimony analysis.

Bayesian analyses of the data sets were conducted using MrBayes 3.0b4 (Huelsenbeck and Ronquist, 2001). Standard procedures based on Modeltest 3.5 (Posada and Crandall, 1998) were implemented in PAUP to select the most appropriate models for the analyses. The relative fit of models was assessed by the Akaike information criterion,  $AIC = -2 \ln L + 2n$  where  $L$  is the maximum likelihood score and  $n$  is the number of free parameters of the model. Smaller values of AIC are preferred (Akaike, 1974; Posada

and Crandall, 2001), and the General Time Reversible + Proportion Invariant + Gamma (GTR + I +  $\Gamma$ ) represents the optimal model with respect to the *18S* and *28S* data and General Time Reversible + Site Specific (GTR + SS) with respect to the *COI* data. Genes were unlinked in the concatenated analyses. Each Markov chain, three heated and one cold, was started from a random tree and all four chains ran simultaneously for 3 to 52 million generations (see below), with trees being sampled so that the resulting data set from each run contained at least 10,000 data points after at least 1000 had been discarded as burnin. Tracer ver. 1.2 (Rambaut and Drummond, 2003) was used to check auto-correlation of individual parameters and to check that the 1000 generations discarded as burnin were sufficient to ensure that the chain had reached convergence before inference from the Markov chain Monte Carlo data set was made. Several repetitions of the analysis converged on similar parameter estimates (numerous runs of *ca.* 3 million, three runs of 11 million, one run of 31 million for individual genes and 52 million for the concatenated sequences).

## Results

### Systematics

CHAETOPTERIDAE Audouin & Milne-Edwards, 1833

*Chaetopterus* Cuvier, 1830

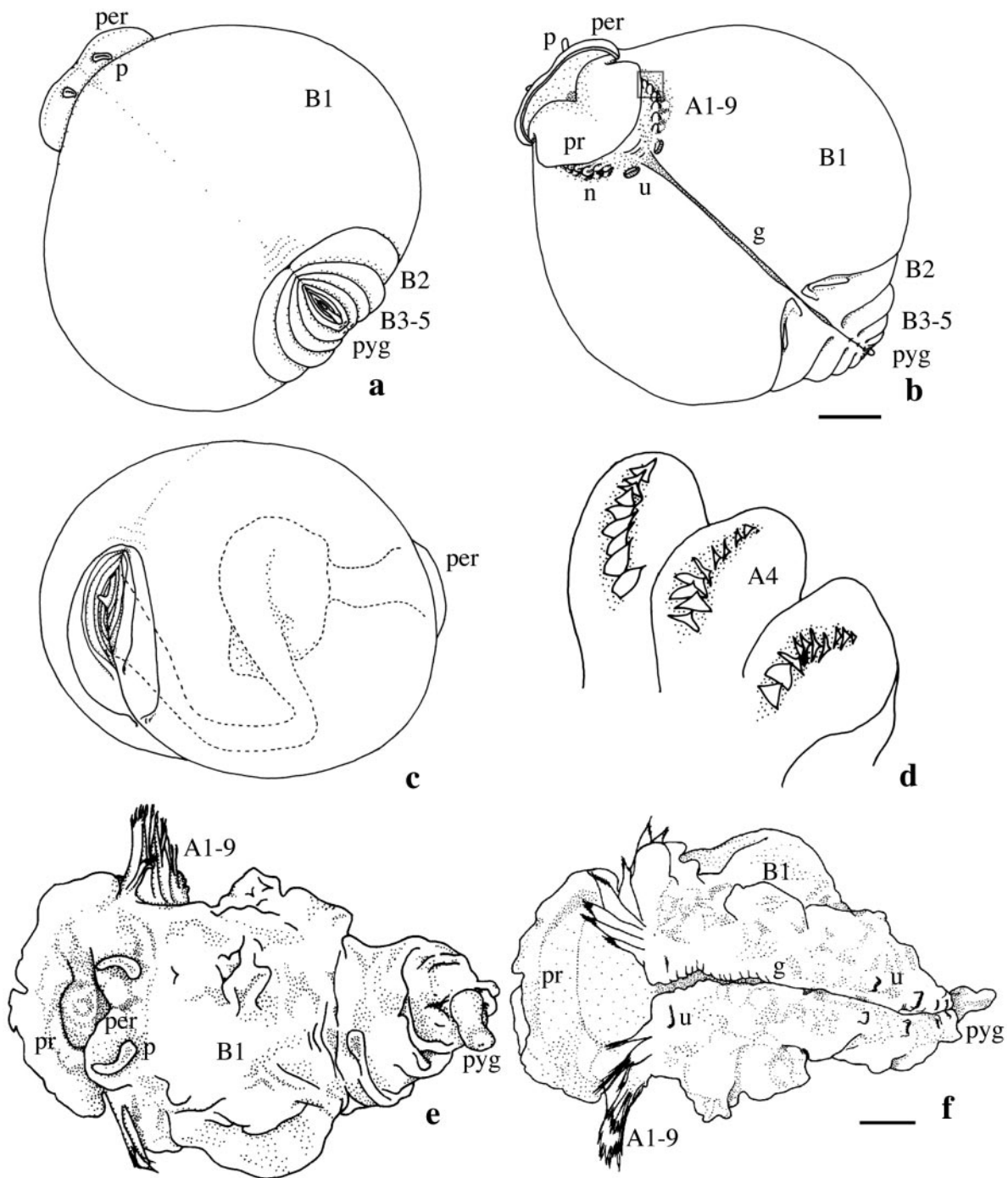
*Chaetopterus pugaporcinus*, new species

### Type material

The holotype, collected from Monterey Bay, California, 36.32°N, 122.89°W, in December 2004 by KJO and BHR, is deposited at the Los Angeles County Museum of Natural History Allan Hancock Foundation Polychaete Collection (LACM-AHF POLY 2173). All specimens collected are of undetermined sex. Four paratypes exist and are deposited, two at LACM (LACM-AHF POLY 2174 and 2175) and two at the South Australian Museum, Adelaide (SAM E3508, E3509). One specimen is partially sectioned along the longitudinal axis of the body; the region-A chaetae are mounted on permanent slides; the remaining tissue, consisting of anteroventral body, is in 70% ethanol (SAM E3508). Tissue from an additional specimen, originally frozen and now in chilled 95% ethanol, and that of two additional specimens is retained by KJO at the Monterey Bay Aquarium Research Institute.

### Diagnosis

Small to medium-sized (10–21 mm in body length and width) *Chaetopterus* with peristomium and prostomium resembling larval preoral and postoral lobes (Fig. 1 and Fig. 3b). Peristomial palps short, rudimentary to as long as peristomium. Eyes absent. A middorsal ciliated groove running from posterior margin of segment A9 to at least pos-



**Figure 3.** *Chaetopterus pugaporcinus*. (a) Ventral view. (b) Dorsal view (box indicates area of enlargement in (d)). (c) Right posterolateral view showing sigmoid path of gut through expanded chaetiger B1. (d) Enlargement of notopodia of chaetigers A3–5. Tips of lanceolate chaetae are just visible projecting from slight elongate groove from dorsal surface to distal tip. (e) Ventral and (f) dorsal views of preserved holotype. A & B# = region A and B chaetigers, g = middorsal ciliated groove, n = notopodia, p = palp, per = peristomium, pr = prostomium, pyg = cylindrical pygidium, u = uncinal plate. Scale bars: (b) 4 mm, (f) 1 mm.

terior margin of region B. Body with two or three regions (regions A, B, and C, with segments of each region numbered separately as A1, A2, etc.; B1, B2, etc.). Region A with 9 chaetigers, parapodia uniramous except A9, with

neuropodia as uncinal plates, notopodial lobes short and simple, lanceolate chaetae just projecting from dorsal to distal surface, lacking cutting spines. Region B composed of two greatly expanded, biramous segments (B1 and B2) and



three additional uniramous segments, B1 much larger than B2, notopodia of B1–2 with up to 10 internal chaetae, neuropodia as uncinial plates in a single lobe. Region C consists of one segment at most and the pygidium, possibly with uncinial plates. Compressed nature of region C leaves room for further interpretation of segmentation there. Body formula = 9A, 5B, 1(+1)C = 15 segments.

#### Type locality

Monterey Bay, California, 36.32°N, 122.89°W, from 1029 m where the seafloor is 3500 m deep.

#### Etymology

The species is named *pugaporcinus* (based on the following Latin roots and suffix respectively: *puga* = rump; *porcus* = pig; and *inus* = having the likeness of) for its resemblance to the “rump of a pig.” *Puga* and *porcus* are nouns in opposition, resulting in a masculine specific epithet to agree in gender with *Chaetopterus*. For the sake of simplicity and euphony, an “a” was chosen as the connecting vowel instead of the usual “ato” or “i.”

#### External

Holotype 17 mm long in life, paratypes 10–21 mm long in life. Region A with 9 segments, compressed so notopodia project anteriorly under prostomium, forming an arch running dorsoventrally (Figs. 3b and 4c). Each A-region notopodium with 6–10 lanceolate chaetae (Fig. 3d). Segment A9 with neuropodial uncini on either side of anteriormost portion of middorsal ciliated groove (Fig. 3b). Middorsal ciliated groove beginning at posterior margin of segment A9, continuing to at least posterior margin of region B. Prostomium large (to 20% of body length), bilobed, and folding towards the posterior (Figs. 3b and 4a). Peristomium broadly horseshoe-shaped, with short (no longer than length of peristomium) grooved palps; no eyes. Region B with 5 segments. Segment B1 greatly enlarged, accounting for more than 80% of body length, and as broad as animal is long. Segment B2 nearly one-fourth as long as B1 at longest, B3–B5 compressed. Inflation of B1 and compression of anterior and posterior segments gives animal a nearly spherical appearance when undisturbed (Fig. 2). When disturbed, animal contracts, withdrawing region A, segments B3–5, region C, and the middorsal ciliated groove toward the body center (Fig. 4b). Neuropodial uncinial plates on posterior margin of segments in regions B and C, lateral to middorsal ciliated groove and with a single row of uncini. The sectioned specimen revealed notopodia in segments B1 and B2 with up to 10 internal, simple chaetae lateral to the uncinial plates. Region C difficult to discern from pygidium but seems to consist of 1 uniramous segment. The pygidium consists of a cylindrical appendage immediately dorsal to the anus.

Live animal semitransparent white to beige with dark brown to purple pigment lining interior of buccal region. Gut packed with dark material, making it easily distinguishable through body wall (Figs. 3c and 4b, d). No glandular plate, ventral shield, or plastron is found. Cilia present only in the middorsal, ciliated groove and lining interior of buccal region.

#### Chaetae

No stout, modified chaetae (cutting spines) on segment A4. Lanceolate chaetae in notopodia A1–A9 (Fig. 4e), measuring 1.14 to 2.34 mm long and up to 0.07 mm wide from an 18-mm-long specimen (SAM E3508), with longest chaetae found in chaetiger A5.

Uncini (Fig. 4f, g) present posteriorly in all chaetigers from A9. Ten to more than 40 uncini per uncinial plate, A9 consistently contained the most, with decreasing numbers found in posterior chaetigers. General uncinial shape is ellipsoid or rounded-rectangular, measuring 37 by 22  $\mu\text{m}$  in maximum dimensions; decreasing slightly in posteriormost segments. Teeth are prominent and few, 8–12. Tooth roots are slightly oblique relative to anterior-posterior direction of uncinial plate. Posterodorsal face with distinct shoulder overhanging a concavity leading to a sharp heel projecting slightly from flat or convex sole. Ventral insertion zone roughly convex, with posterior height less than the anterior height. Uncini of region B as above (Fig. 4g) to those with less pronounced shoulder and concavity above the projecting heel (Fig. 4f).

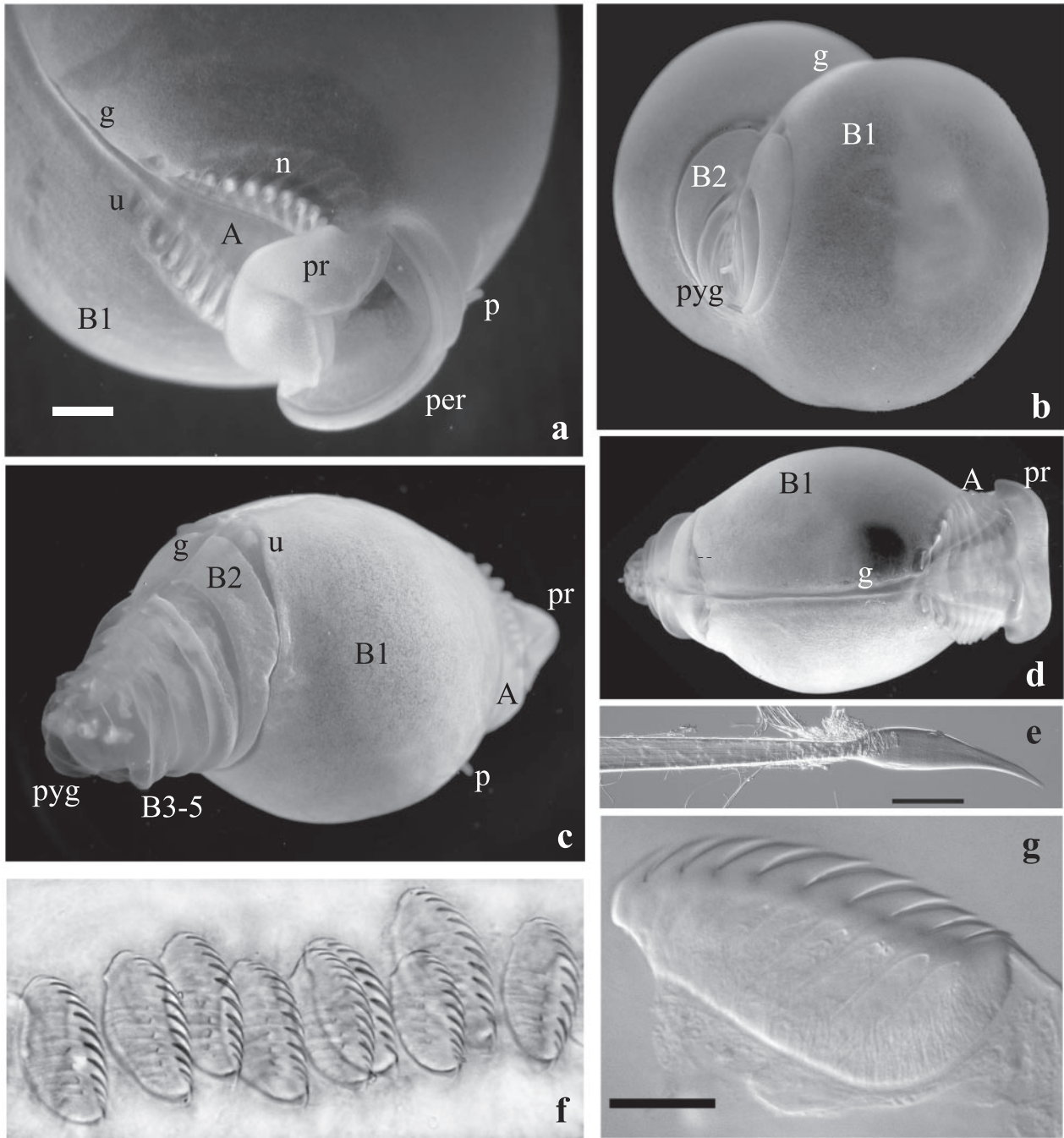
#### Internal

Dorsoventrally broadened S-shaped gut projects into cavity formed by segments B1 and B2, arching ventrally and then dorsally before decreasing abruptly and traveling along dorsal body wall directly to anus (Fig. 3c). Small orange, glandular organ attached to posterior portion of digestive tract within B3–5 segments, and numerous pouches of connective tissue attached to the gut and filled with fluid. Interior of B1 and B2 forming a well-developed coelomic cavity filled with the fluid-filled pouches. Septa are distinct between region A segments but incomplete between region B and C segments, which are indicated by the presence of uncinial plates and annulations on the external surface (Fig. 4b–d).

One half of one paratype (SAM E3508) was sectioned longitudinally to search for gametogenic tissue and to examine septation and internal chaetae. No decisive gametogenic tissue was found. No gametes were seen through the nearly transparent body walls of any of the individuals collected.

#### Remarks

The unusual body form of *C. pugaporcinus* allows few direct morphological comparisons with described chaetop-



**Figure 4.** *Chaetopterus pugaporcinus*. (a) Left anterodorsal view. (b) Right posterolateral view of animal with midventral ciliated groove contracted and seen at the top. (c) Right posterolateral view of relaxed animal such that chaetigers B3–5 and the pygidium are extended. (d) Dorsal view of relaxed animal with all chaetigers extended. (e) Lanceolate chaeta of segment A5. (f) Nine uncini from center of the single row from B2. (g) Uncinus from A9 with muscular support lost during dissection. The support attached to the sharp heel below teeth 3 and 4. A & B# = region A and B chaetigers, g = middorsal ciliated groove, n = notopodia, p = palp, per = peristomium, pr = prostomium, pyg = cylindrical pygidium, u = uncinial plate. Scale bars: (a) 3 mm, (e, g) 10  $\mu$ m.

terids. This novel species is morphologically most similar to *Chaetopterus* and *Mesochaetopterus* on the basis of larval form, size, and uncinial form. Angle of the tooth roots,

relative to the anterior-posterior direction of the uncinial plate, has been used (Bhaud, 2003) to distinguish *Mesochaetopterus* (perpendicular) from *Chaetopterus* (oblique).

*Chaetopterus pugaporcinus uncinus* are most similar to those of *Chaetopterus*, yet the morphology suggests that this feature may vary more than shown by Bhaud's (2003) examples. The new species also resembles *Chaetopterus* in having five region-B segments, although their form differs considerably from those previously described in *Chaetopterus* larvae or adults. The short palps are typical of *Chaetopterus*. These three features alone are insufficient to determine the taxonomic affinities of this unusual species.

This new species differs from all previously described *Chaetopterus* species in the general form of the body (spherical body consisting of segment B1 and B2, with remaining segments compressed to the anterior and posterior surfaces of the two enlarged segments); the shape of the uncini (overhang, concavity, and sharp heel on the posterior-dorsal face); the lack of cutting spines on segment A4; and the presence of internal notochaetae in B2. The molecular data further support the uniqueness of this species (total uncorrected divergence = 18S: 0.4%–1.6%, 28S: 1.7%–7%, COI: 18%–21%) when compared to other *Chaetopterus*. The novelty of this species extends beyond the differences mentioned above, to the combination of larval and adult features and extended use of the larval habitat. It is not yet possible to determine whether the specimens are the first pelagic member of Chaetopteridae to be described or gigantic larvae that have yet to metamorphose and settle, because no reproductive individuals have been found.

*Chaetopterus pugaporcinus* resembles L5 stage (competent to metamorphose) *Chaetopterus* larvae (Irvine *et al.*, 1999) in many ways. Typical chaetopterid larvae are compact, barrel-shaped, and nearly as wide as long in earlier stages; they elongate as they age. They possess one or two ciliated mesotrochal rings (Blake, 1996, reports as many as three) and adult chaetae (Bhaud, 2003). The form of the prostomium and peristomium of *C. pugaporcinus* resembles enlarged larval preoral and postoral lobes, with the prostomium folding dorsally. The arrangement of region A segments after relaxation, the form of pygidial tissue ventral to the anus, the lack of dorsal-ventral flattening of region A, the lack of elongation of the entire body, and the pelagic habitat are additional similarities shared with larval chaetopterids. L6 stage *Chaetopterus* larvae (mid-metamorphosis) differ from *C. pugaporcinus* in the form of the prostomium and peristomium, the general shape of region A, the presence of aliform notopodia in segment B1, the development of an accessory feeding organ, and the relative size and shape of segments in region B and C (Irvine *et al.*, 1999). Thus, the specimens described here have not yet developed the morphology of L6 stage larvae as described by Irvine *et al.* (1999).

Despite the similarities to L5 stage *Chaetopterus* larvae, there are also several notable differences. *Chaetopterus pugaporcinus* lacks ciliated trochal bands, a key larval characteristic. The trochal bands are present into L6 stage larvae, when they are incorporated into the aliform notopodia

of segment B1 (Irvine *et al.*, 1999). None of the elaborate notopodia often found in other chaetopterids have been observed in *C. pugaporcinus*. L5 stage *Chaetopterus* show no external evidence of segmentation surrounding the mesotrochs (the tissue that will become segments B1–2, Irvine *et al.*, 1999), whereas *C. pugaporcinus* has well-developed B1 and B2 annulations and biramous parapodia on these segments. Also, just anterior to the pygidium, L5 larvae possess a pair of lateral outgrowths that will become notopodia of segment C1 (Irvine *et al.*, 1999); *C. pugaporcinus* lacks these notopodia. Several nonlarval features are present in *C. pugaporcinus*, including well-developed septation of segments A1–9, infolding of the epidermis designating segments of regions B and C, uniramous parapodia in segments following B2, and an enlarged coelomic cavity within region B.

*Mesochaetopterus* larvae are the largest chaetopterid larvae reported to date, reaching as much as 2.5 mm in length, whereas most chaetopterid larvae range from 0.4 to 1 mm (Bhaud and Cazaux, 1987). The specimens described here were nearly an order of magnitude larger than any chaetopterid larvae reported previously. Despite the 11-mm range in total length observed, specimen morphology was consistent from one specimen to the next, differing only in the length of the peristomial palps and possibly the number of segments in region C (+1). Palp length appears correlated to the specimen size: rudimentary palps were found on the smallest specimens and longer palps on larger specimens. As is characteristic of *Chaetopterus*, even the longest palps were never longer than the peristomium. The specimen that may have an additional region C segment was not the largest specimen collected. Specimens shrank considerably when damaged and shriveled further when preserved, even when relaxed prior to preservation. Preserved specimens measure 4–11 mm. Shrinkage is commonly observed in pelagic polychaetes, especially tomopterids, alciopids, and typhloscoleids (KJO, pers. obs.). Sizes of larvae reported in the literature are likely a mixture of live and preserved measurements, with the largest measurements taken from fresh material. Thus our measurements (up to 21 mm) can be directly compared to Bhaud and Cazaux's (1987) greatest measurement of 2.5 mm.

### Ecology

*Chaetopterus pugaporcinus* has been found in the water column between 875 and 1221 m, in water 1600 to 3500 m deep. The animal is neutrally buoyant when uninjured and remained so in the laboratory for as long as 6 days. If an animal was injured, region B shriveled and the specimen sank to the bottom of the aquarium.

*In situ* specimens were observed attached to a cloud of mucus that was several times the size of the animal. Water disturbance generated by the ROVs caused separation of the

animals from their mucous clouds. Specimens held in the laboratory were observed to produce mucus that formed unorganized clouds from the middorsal ciliated groove and from the cylindrical pygidial projection dorsal to the anus. The resulting mucous cloud was not released by the animal but remained in contact with the cylindrical pygidial projection (Figs. 3c and 4b). Fecal pellets were found in the mucous cloud after several hours.

It is assumed that feeding occurs by collection of sinking marine "snow" particles in the mucus produced from the middorsal ciliated groove. Periodically, the mucous cloud would have to be drawn into the mouth and the aggregate consumed. Feeding by collection of particles on mucus is common in pelagic larvae and other gelatinous zooplankton. For example, *Poecilochaetus* larvae are reported to produce a three-dimensional network of mucous strands that they then move along individually while feeding on small particles that adhere to the strands (Hamner *et al.*, 1975), and larval pectinariids were recently shown to utilize a mucous filter while feeding in the water column (Pernet, 2004). Pseudothecosomatous pteropods use mucous webs manipulated by ciliary action to feed in the midwater (Gilmer, 1972), and larvaceans produce elaborate mucous feeding structures. Adult tubicolous chaetopterids feed by filtering through mucous bags manipulated by the aliform notopodia and cilia of the middorsal food groove (MacGinitie, 1939), and chaetopterid larvae are known to produce mucus (Nozais *et al.*, 1997). It is likely that *C. pugaporcinus* feeds by the production of a mucous web that is manipulated by cilia of the middorsal groove and buccal area, although this was not observed directly.

Fecal pellets contained primarily skeletal remains of pelagic phytoplankton: coccolithophores, individual coccoliths, and diatom frustules (identified *via* scanning electron microscopy). They also contained pelagic foraminiferans, phaeodarians, silicoflagellates, dinoflagellates, as well as some unidentified soft material. Items in the fecal pellets were consistent with holopelagic suspension feeding on marine snow (KJO, unpubl. data).

Additionally, the mucous cloud may increase buoyancy, as also observed in *Poecilochaetus larvae* (Nozais *et al.*, 1997). However, *C. pugaporcinus* specimens were able to maintain their positions in the aquaria for several hours without a mucous cloud.

### Behavior

*Chaetopterus pugaporcinus* is neutrally buoyant, and when encountered *in situ*, each specimen was fully inflated, floating in the lower mesopelagic portion of the water column. The oral surface is relatively dense and keeps the animal's anterior end oriented down at all times. There was no active response to light, water disturbance, or the sound of the ROV, other than a slight contraction of regions A and

C and the middorsal ciliated groove. When physically disturbed *in situ*, specimens did not change their posture or the distended nature of region B. When undisturbed in the laboratory, the animal floated in the upper one-third of the tank, attached to a mucous cloud. When exposed to isotonic magnesium chloride, or when the health of the animal deteriorated, the inflation of region B relaxed and the animal stretched longitudinally. No settling behavior was observed in animals kept in the laboratory, nor was swimming observed. There was no apparent ability to interact with any surface or object other than the mucous cloud. Specimens did not display any locomotory abilities.

One specimen was held in a still-water aquarium for 26 h. The floor of the tank was furnished with deep-sea mud and sand more than three body lengths deep, with a cluster of rocks on one side. The specimen made no attempt to interact with the substrate during that period, nor was any sign of the onset of metamorphosis observed. Irvine *et al.* (1999) report that it takes as little as 6 h for an L5 stage *Chaetopterus* larva to reach late L7 stage and complete metamorphosis.

### Bioluminescence

One specimen was examined for bioluminescence and was found to produce light in two forms. Only this single specimen was tested, due to the destructive nature of the physical stimulation. Bright blue light outlined the peristomium/prostomium after direct physical stimulation. The area glowed for 3–6 s, then abruptly extinguished. Additionally, minute green, bioluminescent particles were spewed from the middorsal ciliated groove or surrounding area, and the posterior end. These small glowing specks were dispersed throughout the mucous cloud produced at the same time, and glowed vividly for 1–2 s before fading slowly. The mucus and bioluminescent particles were apparently forced away from the body by as much as two body lengths.

Luminescence is common in *Chaetopterus* (Nicol, 1952; Martin and Anctil, 1984; Nishi, 2000). Transitory and undispersed light is produced when direct physical stimulation or freshwater are applied to the peristomial palps, feeding structures on the dorsal surface of region B, and notopodia of region C. Nicol (1952) also found that photogenic glands on the aliform notopodia give off a luminescent secretion suspended in mucus that is dispersed in the surrounding water. Our observations do not conflict with any of these findings, but few comparisons can be drawn between them because of the differences in the structures present on *C. pugaporcinus*.

### Phylogenetic relationships

Alignment of the concatenated sequences resulted in 3666 aligned base pairs. Of those, 2677 were either invariable or parsimony uninformative, leaving 989 parsimony

informative base pairs. The equally weighted data matrix recovered two most parsimonious trees of length 5058, with a consistency index of 0.545, a retention index of 0.449, and a rescaled consistency index of 0.245. The strict consensus of these trees is shown on the left side of Figure 5 with poorly supported nodes (having bootstrap and jackknife values below 70%) collapsed.

Individual genes were also analyzed separately; informative sites included 513/1791 bp for the *18S* gene; 687/1151 for the *28S* gene, and 513/720 for the *COI* gene (162 first position, 112 second position, 239 third position). Individual gene trees are shown in Figure 6.

Chaetopteridae are consistently shown to be a monophyletic group containing two well-supported clades: clade 1 containing *Mesochaetopterus* and *Chaetopterus* and clade 2 containing *Phyllochaetopterus* and *Spiochaetopterus* (Figs. 5 and 6). *Spiochaetopterus bergensis* Gitay, 1969, is found nested among the *Phyllochaetopterus* terminals used here, suggesting that the latter may be paraphyletic, though further sampling of *Spiochaetopterus* is clearly needed.

*Mesochaetopterus* is found to be sister to *Chaetopterus* according to the *18S* sequence data (Fig. 6), as well as in the combined analysis (Fig. 5). However, the *28S* data show *Mesochaetopterus* nested among the *Chaetopterus* clade as sister group to *C. pugaporcinus*, and the *COI* data poorly supports the position of *Mesochaetopterus* in relation to *Chaetopterus* sp. 1.

*Chaetopterus pugaporcinus* falls as part of a *Chaetopterus* clade in the combined analysis, as well as with the *18S* and *COI* sequences alone. Thus this novel pelagic chaetopterid is designated here as a species of *Chaetopterus* despite its extreme morphological modifications.

The two specimens of *C. pugaporcinus* sequenced were found to have identical sequences for all genes, with the exception of one ambiguous base in the *28S* sequences. Total sequence differences between *Chaetopterus* specimens (total uncorrected divergence = *18S*: 0.4% to 1.6%; *28S*: 1.7% to 7.0%; *COI*: 18% to 21%) further support the idea that *C. variopedatus sensu* Hartman (1959) is actually a species complex and that the author unnecessarily synonymized a number of valid species. *Chaetopterus pugaporcinus* is considered a valid species owing to the sequence differences from *Chaetopterus* specimens collected from nearby localities for all three genes analyzed, as well as to their novel morphology.

## Discussion

### Phylogenetic relationships

All of our analyses place *Chaetopterus pugaporcinus* within clade 1 (*Mesochaetopterus* and *Chaetopterus*), suggesting that the novel species described here belongs to *Chaetopterus*. The combined data set shows that it is

most reasonable to place the new species as part of *Chaetopterus*, as do the *18S* and *COI* data. The *28S* data would place both *Mesochaetopterus* and *C. pugaporcinus* within *Chaetopterus*. Thus we have conservatively named the new species as a *Chaetopterus*, coinciding with the morphological findings.

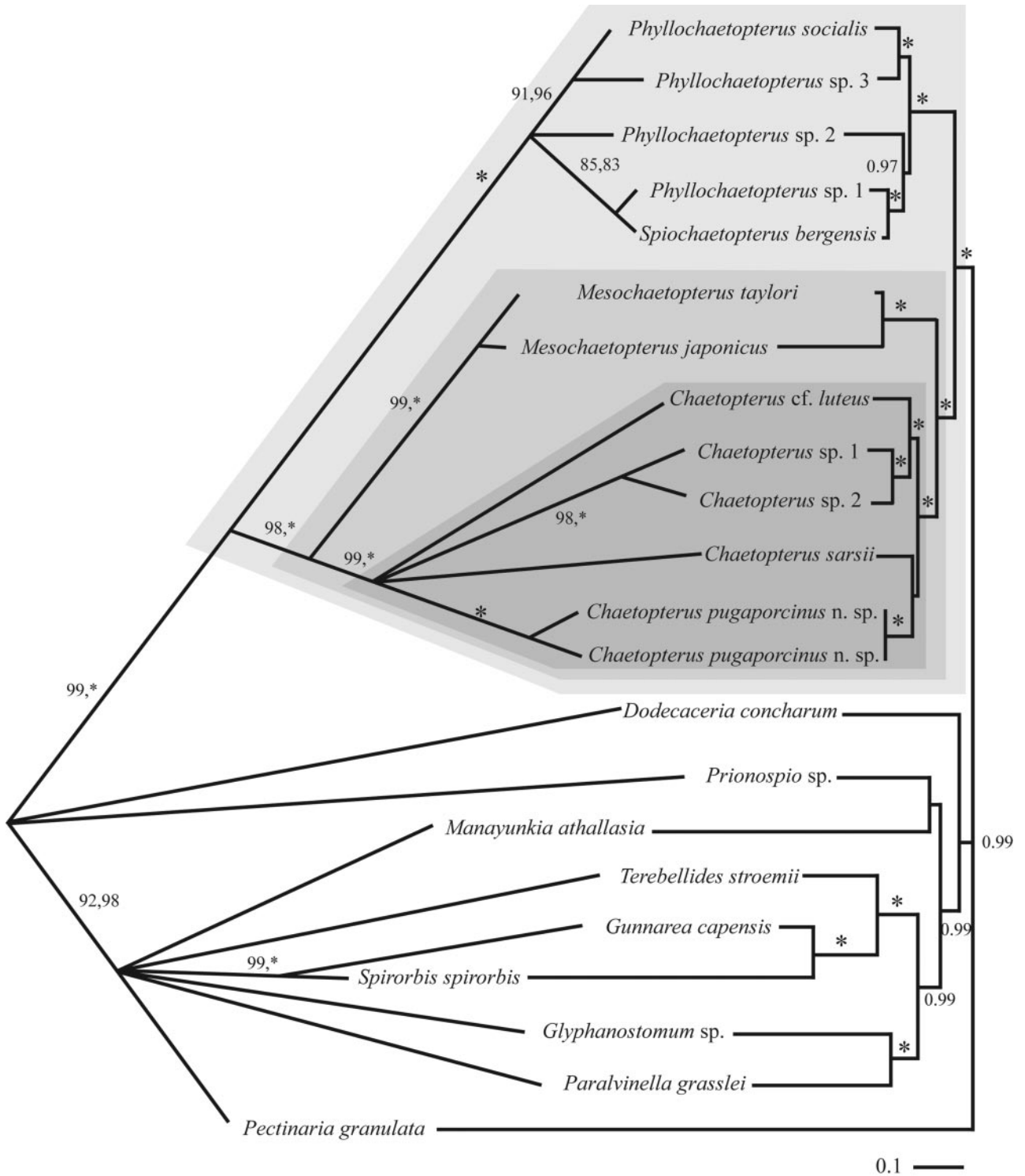
Relationships in and around the Chaetopteridae are not well known, yet the monophyly of the group has never been questioned owing to the uniqueness of the chaetopterid body form. All genes examined provided further strong support for the monophyly of the group.

Relationships within the Chaetopteridae have been proposed as far back as Potts (1914), and of the four genera, *Chaetopterus* and *Mesochaetopterus* are most similar to each other. They are distinguishable by a feature of the uncini (Bhaud *et al.*, 2002), as well as by the number and arrangement of region B and C segments and parapodial form. *Phyllochaetopterus* and *Spiochaetopterus* are also similar to each other with respect to their modified chaetae and their uncini (Bhaud, 2003) and are separated by the presence (*Phyllochaetopterus*) or absence (*Spiochaetopterus*) of "tentacular cirri" on chaetiger 1. Note that these tentacular cirri are in fact lobes containing chaetae (Rouse and Pleijel, 2001). Bhaud (2003) pointed out the difficulty of using hard parts (modified chaetae and uncini) to distinguish between *Phyllochaetopterus* and *Spiochaetopterus*, whereas these characters typically work well to distinguish these genera from *Mesochaetopterus* and *Chaetopterus*.

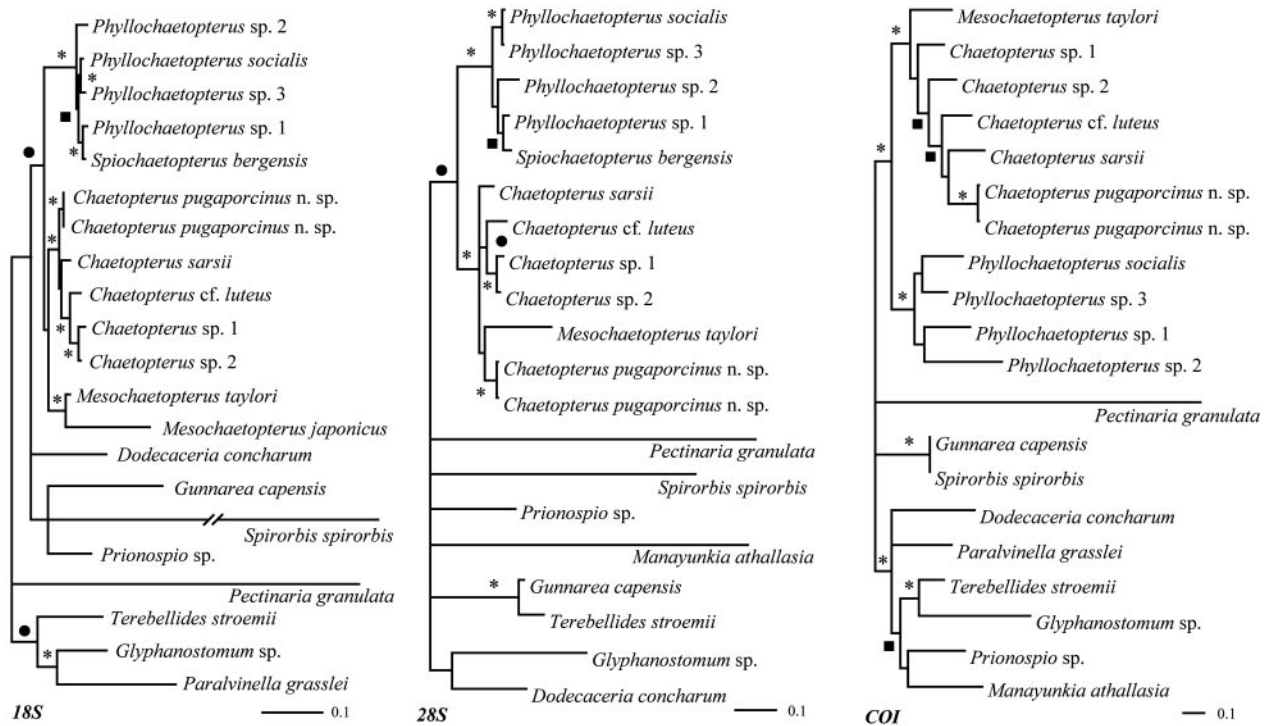
Our present data indicate that *Mesochaetopterus* is the sister group to *Chaetopterus* (Figs. 5 and 6), though this result is not apparent in the *28S* data. Great difficulties were encountered when amplifying DNA from *Mesochaetopterus* specimens (three *M. taylori* and one *M. japonicus*) for large subunit ribosomal (*28S*) and *COI* genes, suggesting that mutations have taken place in the primer regions used. This difficulty was not encountered consistently within any other taxa during this project, or with amplification of the *18S* ribosomal gene from *Mesochaetopterus* specimens. These mutations could be a synapomorphy for the group. Further taxon sampling, additional primer design/sequencing, and careful morphological work are necessary to fully determine the nature of the relationship between *Mesochaetopterus* and *Chaetopterus*.

### Suspended larvae or holopelagic paedomorphic species?

There is no set number of days that chaetopterid larvae spend in the plankton; thus the larval period can be extended when appropriate habitat is not found (Bhaud *et al.*, 1990; Hadfield and Strathmann, 1996). Whether the specimens described here are simply wayward larvae, swept off the continental shelf and unable to settle, thus growing to unusual size and developing adult features, or are the first known representatives of a holopelagic chaetopterid



**Figure 5.** The strict consensus of the two most parsimonious trees from the parsimony analysis and the 70% majority rule Bayesian tree. Bootstrap and jackknife values (respectively) are given on the parsimony tree and posterior probabilities on the Bayesian tree. All values equal to 100% jackknife/bootstrap or 1.0 posterior probability are indicated with an asterisk. Branches not supported by at least 70% jackknife/bootstrap are collapsed on the parsimony tree, and posterior probabilities are provided only when greater than 0.95. Chaetopteridae are highlighted in light gray, strict *Chaetopterus* in dark gray, and clade 1 in medium gray.



**Figure 6.** Individual gene trees generated from the 31 million generation Bayesian analyses of *18S*, *28S*, and *COI* sequences. Posterior probabilities equal to 1.0 are indicated with an asterisk, 0.98–0.99 with a solid circle, and 0.90–0.97 with a solid square near respective branches.

species, is yet to be resolved. However, we suggest that *C. pugaporcinus* is not a suspended larva waiting to metamorphose, despite the larval features present. Larval features of *C. pugaporcinus* include prostomial and peristomial form, lack of dorsoventral flattening of region A, lack of elongation of the body, form of pygidial tissue, and pelagic habitat. The principal evidence in favor of a holopelagic chaetopterid species is the lack of all ciliated mesotrochal rings and the presence of adult features. The latter include well-developed septation of segments A1–9, infolding of the epidermis designating segments of regions B and C, presence of parapodia on segments of regions B and C, and an enlarged coelomic cavity within region B. The same combination of larval, adult, and missing characters was found in each specimen, regardless of their broad size range (10–21 mm). If these were larvae waiting to settle, one would expect more adult features in the larger, older individuals and more larval features in the smaller, younger individuals, as found by Tzetlin (1998). However, the only differences we found were the relative lengths of the peristomial palps and possibly an additional region C segment in one medium-sized specimen. Palp length did not vary widely when considered relative to peristomium length, and palps are usually present in stage L5 *Chaetopterus* larvae. Palps no longer than the peristomium are a generic character of *Chaetopterus*.

*Chaetopterus pugaporcinus* was a particularly distinctive chaetopterid because, among other characters, it lacks modified A4 chaetae. If these specimens are larvae, they are nearly 10 times larger than any reported chaetopterid larva, and the largest is nearly twice the size of the largest larval polychaete reported (Tzetlin, 1998). A large larva would most likely metamorphose into a relatively large species, and it seems unlikely that such a distinctive macrofaunal species would have been unobserved with the extensive benthic sampling carried out off California (Blake, 1996), unless it is utilizing a poorly studied (midwater) or rare habitat. A large undescribed chaetopterid has indeed been found in large numbers around a whale fall in Monterey Bay (G.W. Rouse and C. E. Brady, unpubl. data), but it differs dramatically from *C. pugaporcinus* (*Phyllochaetopterus* sp. 1: tentacular cirri, uncini, glandular crescent, modified chaetae, and significant total uncorrected sequence divergence, *18S*: 3%, *28S*: 13%, *COI*: 26%).

*Chaetopterus pugaporcinus* is found within a narrow depth range regardless of distance from shore or bottom depth, possibly suggesting adaptation to a specific habitat. In Monterey Bay, this depth range coincides with the bottom of the oxygen minimum zone. The lower interface of the oxygen minimum zone is often the site of concentrated marine snow and other debris that has fallen, essentially unchanged, through the above layer of low oxygen, and

represents a relatively rich food source (Wishner *et al.*, 1995). The ecological flexibility of chaetopterid larvae is well established (Bhaud and Duchène, 1996; Irvine *et al.*, 1999), so it is reasonable to consider that a holopelagic form has arisen within the Chaetopteridae and that it resembles their pelagic larvae. Holopelagic polychaetes have evolved independently several times among annelids (Rouse and Pleijel, 2001).

Paedomorphosis (juvenile features retained in adults) is a mechanism of evolutionary change sometimes seen as simplification of the body, a feature common in mesopelagic animals (Herring, 2002) and may be the case with *C. pugaporcinus*. *Chaetopterus pugaporcinus* lacks the modified chaetae (cutting spines) used to cut the tube to allow for growth, a feature directly related to tubicolous living and one that may “weigh heavily” on a neutrally buoyant animal. It seems reasonable that these would be lost after adoption of a holopelagic lifestyle and therefore would be autapomorphic losses for *C. pugaporcinus*.

*Conclusions*

*Chaetopterus pugaporcinus* exhibits a combination of larval and adult features, and the habitat in which the specimens were found is typical only of chaetopterid larval stages. The question of adult status is not resolved because none of the eight specimens collected had recognizable reproductive products. This question would be fully resolved if a reproductive individual were collected in mid-water or if a benthic adult were found that genetically and to some extent morphologically matched that described here. Regardless, the species introduced here is particularly interesting because of its great size and its continued survival deep in the water column with a consistent combination of larval and adult features. This prolonged survival is accomplished by retention of larval features already adapted to a pelagic life and loss of features necessary for a tubicolous life.

**Acknowledgments**

We are indebted to Fredrik Pleijel, Eijiroh Nishi, Robert Vrijenhoek, Shane Anderson, and Megan Dethier for providing specimens. Steve Haddock, Christy Schnitzler, W. Joseph Jones, C. Robert Young, and Lynne Christianson were extremely helpful with the molecular portion of the project. Jonathon Krupp and Kurt Buck were very helpful with the SEM work. Thanks also to the pilots of the ROVs *Ventana* and *Tiburón*, and the crews of the RVs *Point Lobos* and *Western Flyer* for their expertise and dedication to the exploration of the deep sea. Thanks to two reviewers for suggestions that improved the manuscript. A particular thanks is due Mary Petersen for advice and suggestions that greatly improved the manuscript. The David and Lucile

Packard Foundation provided support for this project through the MBARI Midwater Ecology Group.

**Literature Cited**

**Akaike, H. 1974.** New look at statistical model identification. *IEEE Trans. Automatic Control* **19**: 716–723.

**Bhaud, M. 1998.** The spreading potential of polychaete larvae does not predict adult distributions: consequences for conditions of recruitment. *Hydrobiologia* **376**: 35–47.

**Bhaud, M., and C. Cazaux. 1987.** Description and identification of polychaete larvae, their implications in current biological problems. *Oceanis* **13**: 595–753.

**Bhaud, M., and J. C. Duchène. 1996.** Change from planktonic to benthic development: Is life cycle evolution an adaptive answer to the constraints of dispersal? *Oceanol. Acta* **19**: 335–346.

**Bhaud, M., and M. A. Fernandez-Alamo. 2000.** Planktonic larvae of *Spiochaetopterus* in the Gulf of California: New evidence that the geographic distribution of species with a long planktonic larval life is relatively restricted (Polychaeta, Chaetopteridae). *Ophelia* **52**: 65–76.

**Bhaud, M., C. Cazaux, and M. H. Mathivat-Lallier. 1990.** Métamorphose retardée chez les larves de polychètes et modèle d’acquisition de la vie benthique. *Oceanis* **16**: 207–223.

**Bhaud, M., M. C. Lastra, and M. E. Petersen. 1994.** Redescription of *Spiochaetopterus solitarius* (Rioja, 1917), with notes on tube structure and comments on the generic status (Polychaeta: Chaetopteridae). *Ophelia* **40**: 115–133.

**Bhaud, M. R. 2003.** Identification of adults and larvae in *Spiochaetopterus* (Polychaeta, Chaetopteridae): consequences for larval transport and recruitment. *Hydrobiologia* **496**: 279–287.

**Bhaud, M. R. and M. A. V. Petti. 2001.** *Spiochaetopterus nonatoï*, a new species of Chaetopteridae (Polychaeta) from Brazil: biogeographical consequences. *J. Mar. Biol. Assoc. UK* **81**: 225–234.

**Bhaud, M. R., A. A. Ravara, G. Marciano, and M. H. Moreira. 2002.** *Mesochaetopterus sagittarius*: an example of a biogeography discrepancy between larval and adult boundaries: implication for recruitment studies. *J. Mar. Biol. Assoc. UK* **82**: 565–572.

**Bhaud, M. R., D. Martin, and J. Gil. 2003.** *Spiochaetopterus cre-oceanae*, a new species of Chaetopteridae (Polychaeta) from the Persian Gulf belonging to the *costarum* complex. *Sci. Mar.* **67**: 99–105.

**Blake, J. A. 1996.** Family Chaetopteridae. Pp. 233–251 in *Taxonomic Atlas of the Benthic Fauna of the Santa Maria Basin and Western Santa Barbara Channel*, Vol. VI, J. A. Blake, B. Hilbig, and P. H. Scott, eds. Santa Barbara Museum of Natural History, Santa Barbara, CA.

**Claparède, É. 1868.** Les Annélides Chétopodes du Golfe de Naples. *Mém. Soc. Phys. Hist. Nat. Genève* **19**: 313–584.

**Crossland, C. 1904.** The Polychaeta of the Maldivé Archipelago from the collections made by J. Stanley Gardiner in 1899. *Proc. Zool. Soc. Lond.* **1**: 270–286, pls 218–219.

**Fauvel, P. 1927.** Polychètes sédentaires. Addenda aux errantes, Arachiannélides, Myzostomaires. *Faune Fr.* **16**: 1–494.

**Folmer, O., M. Black, W. Hoeh, R. Lutz, and R. Vrijenhoek. 1994.** DNA primers for amplification of mitochondrial cytochrome C oxidase subunit I from metazoan invertebrates. *Mol. Mar. Biol. Biotechnol.* **3**: 294–299.

**Gilmer, R. W. 1972.** Free-floating mucus webs: a novel feeding adaptation for the open ocean. *Science* **176**: 1239–1240.

**Hadfield, M. G., and M. F. Strathmann. 1996.** Variability, flexibility and plasticity in life histories of marine invertebrates. *Oceanol. Acta* **19**: 323–334.

**Hammer, W. H., L. P. Madin, A. L. Alldredge, R. W. Gilmer, and P. P. Hammer. 1975.** Underwater observation of gelatinous zooplankton: sampling problems, feeding biology, and behavior. *Limnol. Oceanogr.* **20**: 907–917.



- Hartman, O. 1959.** Catalogue of the polychaetous annelids of the world. Part II. *Occasional Papers of the Allan Hancock Foundation* **23**: 1–353.
- Herring, P. 2002.** *The Biology of the Deep Ocean*. Oxford University Press, Oxford.
- Huelsbeck, J. P., and F. Ronquist. 2001.** MRBAYES: Bayesian inference of phylogenetic trees. *Bioinformatics* **17**: 754–755.
- Irvine, S. Q., O. Chaga, and M. Q. Martindale. 1999.** Larval ontogenetic stages of *Chaetopterus*: developmental heterochrony in the evolution of chaetopterid polychaetes. *Biol. Bull.* **197**: 319–331.
- Lenaers, G., L. Maroteaux, B. Michot, and M. Herzog. 1989.** Dinoflagellates in evolution: a molecular phylogenetic analysis of large subunit ribosomal RNA. *J. Mol. Evol.* **29**: 40–51.
- MacGinitie, G. E. 1939.** The method of feeding of *Chaetopterus*. *Biol. Bull.* **77**: 115–118.
- Maddison, D. R., and W. P. Maddison. 2000.** *MacClade: Analysis of Phylogeny and Character Evolution*. Sinauer Associates, Sunderland, MA.
- Martin, N., and M. Anctil. 1984.** Luminescence control in the tube-worm *Chaetopterus variopedatus*: role of nerve cord and photogenic gland. *Biol. Bull.* **166**: 583–593.
- Medlin, L., H. J. Elwood, S. Stickel, and M. L. Sogin. 1988.** The characterization of enzymatically amplified eukaryotic 16S-like rRNA-coding regions. *Gene* **71**: 491–499.
- Nicol, J. A. 1952.** Studies on *Chaetopterus variopedatus* (Renier). I. The light-producing glands. *J. Mar. Biol. Assoc. UK* **30**: 417–431.
- Nishi, E. 2000.** A new species of *Chaetopterus* (Polychaeta: Chaetopteridae) from off Tokyo Bay, Central Japan, with comments on its bioluminescence. *Actinia (Bull. Manazura Mar. Lab. Yokohama Nat. Univ.)* **13**: 1–12.
- Notredame, C., D. Higgins, and J. Heringa. 2000.** T-Coffee: a novel method for multiple sequence alignments. *J. Mol. Biol.* **302**: 205–217.
- Nozais, C., J. C. Duchène, and M. R. Bhaud. 1997.** Control of position in the water column by the larvae of *Poecilochaetus serpens*, (Polychaeta): the importance of mucus secretion. *J. Exp. Mar. Biol. Ecol.* **210**: 91–106.
- Pernet, B. 2004.** The cryptic filtering house of an invertebrate larva. *Science* **306**: 1757.
- Petersen, M. E. 1984a.** *Chaetopterus variopedatus* (Renier) (Annelida: Polychaeta: Chaetopteridae): a species complex. What species are being used at MBL? *Biol. Bull.* **167**: 513 (abstract).
- Petersen, M. E. 1984b.** *Chaetopterus variopedatus* (Annelida: Polychaeta): another victim of the “characteristic species” disease. *Am. Zool.* **24**: 62A (abstract).
- Petersen, M. E. 1997.** Contribution to a revision of *Chaetopterus* Cuvier (Polychaeta: Chaetopteridae): redescription of *C. appendiculatus* Grube and *C. cautus* Marenzeller, with comments on some other species. *Bull. Mar. Sci.* **60**: 619–620 (abstract).
- Petersen, M. E., and T. A. Britayev. 1997.** A new genus and species of polynoid scaleworm commensal with *Chaetopterus appendiculatus* Grube from the Banda Sea (Annelida: Polychaeta), with a review of commensals of Chaetopteridae. *Bull. Mar. Sci.* **60**: 261–276.
- Posada, D., and K. A. Crandall. 1998.** Modeltest: testing the model of DNA substitution. *Bioinformatics* **14**: 917–918.
- Posada, D., and K. A. Crandall. 2001.** Selecting the best-fit model of nucleotide substitution. *Syst. Biol.* **50**: 580–601.
- Potts, F. A. 1914.** Polychaeta from the N.E. Pacific: the Chaetopteridae. With an account of the phenomenon of asexual reproduction in *Phyllochaetopterus* and the description of two new species of Chaetopteridae from the Atlantic. *Proc. Zool. Soc. Lond.* **67**: 955–994.
- Rambaut, A., and A. J. Drummond. 2003.** *Tracer* ver. 1.2. [Online] Available: <http://evolve.zoo.ox.ac.uk/> [1 Oct. 2004].
- Renier, S. A. 1804.** Prospetto della Classe dei Vermi nominati e ordinati second oil sistema di Bosc. *Zool. Jahrb. Syst., Jena* **64**: 41–110.
- Robison, B. H. 1993.** Midwater research methods with MBARI’s ROV. *Mar. Technol. Soc. J.* **26**: 32–39.
- Rouse, G. W., and F. Pleijel. 2001.** *Polychaetes*. Oxford University Press, Oxford.
- Scheltema, R. S. 1974.** Relationship of dispersal to geographical distribution and morphological variation in the polychaete family Chaetopteridae. *Thalassia Jugosl.* **10**: 297–312.
- Swofford, D. L. 2002.** *PAUP (Phylogenetic Analysis Using Parsimony)*. Sinauer Associates, Sunderland, MA.
- Tzvetlin, A. B. 1998.** Giant pelagic larvae of Phyllocodidae (Polychaeta, Annelida). *J. Morphol.* **238**: 93–107.
- Uschakov, P. V. 1955.** Polychaeta of the far eastern seas of the USSR. *Opredeliteli po Faune SSSR.* **56**: 1–445. Acad. Nauk SSSR (In Russian, translated by the Israel Program for Scientific Translations, 419 pp., 1965).
- Wishner, K. F., C. J. Ashjian, C. Gelfman, M. M. Gowing, L. Kann, L. A. Levin, L. S. Mullineaux, and J. Salzman. 1995.** Pelagic and benthic ecology of the lower interface of the Eastern Tropical Pacific Oxygen Minimum Zone. *Deep-Sea Res. Part I Oceanogr. Res. Pap.* **42**: 93–115.