

# Large Die Trial Color Proofs of the U.S. Special Handling Stamps – Now, A Set of 15

by Robert G. Rufe

## Summary

The recent acquisition by the author of the formerly believed-to-be complete and unique “Set of 13” large die trial color proofs of the 1925 Special Handling stamps has revealed the existence of two previously unknown colors for the set (Figure 1). The discovery of these distinctly different colors has been confirmed by analytical testing at the National Postal Museum (NPM), and verified in records researched at the Bureau of Engraving and Printing (BEP). These two colors, carmine rose and blue, are included for the first time in the *Scott’s 2015 Specialized Catalogue of United States Stamps & Covers*.

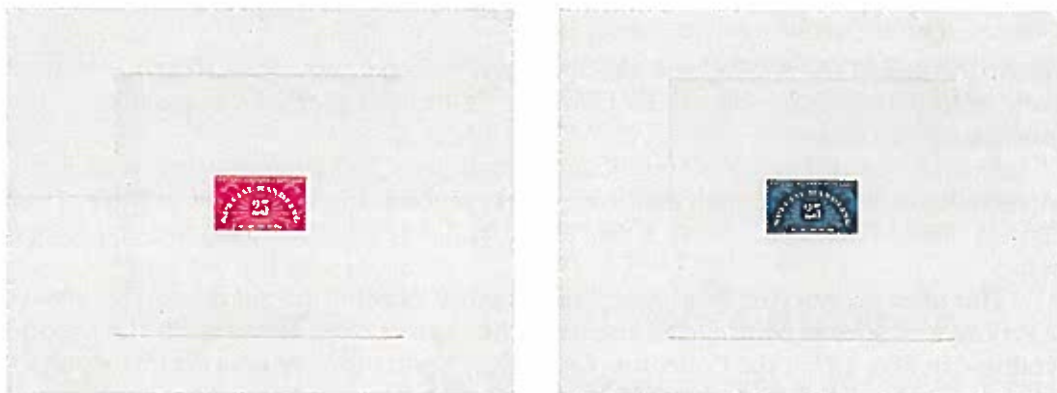


Figure 1. Carmine Rose; Blue - The two new colors in the “Set of 15” Special Handling trial color proofs.

## Background

After 90 years, one would think a subject as simple as a single set of trial color proofs for one stamp would be completely studied and documented. In fact, however, the set has been held by very few owners, and out of sight of the philatelic community for most of its existence. The question of how these Special Handling trial color proofs came to public ownership is not known for certain, but they likely followed the path of other BEP works into private hands as described by Mueller.<sup>1</sup> Here is the story.

The Special Handling “Set of 13” large die trial color proofs, first came to light following an item in the March 21, 1942 issue of *Stamps* (Figure 2), regarding the sale of the collection of the late Hugh M. Southgate (1871 - 1940)<sup>2</sup> by dealer H. A. Robinette.<sup>3</sup> Clarence Brazer, an early pioneer in the history and documentation of essays and proofs, jumped on this revelation and made arrangements with Robinette to

## Southgate Collection to Be Sold

The stamp collection of Hugh M. Southgate, for many years the president of the Bureau Issues Association, will soon come on the market. It contains a large number of uncataloged 20th Century items, especially many proofs hitherto unknown. Mr. Southgate had many opportunities for securing unusual items and collectors will watch the disposal of the stamps with a good deal of interest. H. A. Robinette, 900 F St., N. W., Washington, D. C., will dispose of the property by both auction and private sale.

*Stamps 3/21/42*

Figure 2. *Stamps* Notice of Southgate Material.

handle the sale of the Southgate essay and proof material. Brazer's letter to Robinette dated March 16, 1942 is shown in Figure 3.<sup>4</sup> Robinette handled the balance of the Southgate collections.

Robinette showed much of Southgate's prized proof and essay material at the regular meeting of the Collectors Club, New York, on May 13, 1942.<sup>5</sup> The July 18, 1942 issue of *Stamps* carried a story of this event, and several paragraphs are condensed here.

"The most wonderful Southgate Collection of heretofore unknown U.S. Essays & Proofs was shown by H.A. Robinette at the regular Unit meeting on the second Wednesday, May 13<sup>th</sup> at the Collectors Club, New York, to a very appreciative group."<sup>6</sup> Southgate specialized in Bureau issues, and though he would not admit that he had many proofs, he had bought some from the Wood collection, many of whose holdings were obtained from the personal collection of G.F.C. Smillie, a chief engraver of the U.S. Bureau of Engraving and Printing. "Mr. Southgate was of great philatelic assistance to the Bureau of Engraving and Printing and obtained much information as to Bureau Issues for collectors. From his friends in Washington he apparently obtained many essays and proofs for this philatelic service."<sup>7</sup>

That summer, Brazer placed an advertisement - "A Most Unusual Offer from the Unique Collection of H.M. Southgate U.S. Die Proofs" - in the August, 1942 *American Philatelist*, and this ad constitutes the first print appearance of the Special Handling trial color proofs - a set of 14, the "Set of 13" plus an approved and signed deep green large die proof (Figure 4).

Figure 4. Brazer Ad in the August, 1942 Issue of *The American Philatelist*.

March 16, 1942

Mr. H. A. Robinette  
900 F. Street N. W.  
Washington, D. C.

Dear Mr. Robinette:

In *Stamps*, I read that you have the Southgate essays and proofs for private sale and auction.

It is very desirable both from your and my position that all heretofore unknown varieties be listed in my *Essay Catalog* and *Scott's U. S. Catalog* of which I am associate editor for proofs.

I also would like to buy for our Reference Collection and have perhaps, customers for most of this material. Consequently, I would greatly appreciate seeing all the Essays and Proofs as soon as you have them priced and will report or return promptly. If for any reason this is not convenient, I will come to your office, if I may see them before any are disposed of.

Hoping to have the favor of an early reply.

Cordially yours

Clarence V. Brazer

Figure 3. Brazer Letter to Robinette re: Southgate Sale.

TRIAL COLOR DIE PROOFS

1908, 8332TC 2c in 13 colors including 5 on colored paper.

1917, 513TC 13c in 20 colors selected for values of 1912 issue.

1918, 528TC, 524TC each in colors approved for other.

1925, QE4TC. 25c Special Handling in 14 colors including the officially approved copy.

Rob Clark (1886 the first list is listed in t Mr. Robe purchase fr owned two of colors in as complete ditional tria Robert A. S February 10 mously sold as listed in t



Figure 5. Ca "Set of 13" lu

Star

UNOFFICIAL  
SPECIAL HANDLING

What's

What, you color fro carmine-lake. We newly-appointed of Scott No. QE4 stamp. Bob is jus ing quality of this to be nominated petition. WHAT. U.S. stamp? Email Editor@American

March 16, 1942

to essays

position  
in my  
I am associ-

Collection  
trial, Con-  
the Essays  
I'll report  
it convenient,  
ore any are

hgate Sale.

Robinette  
ice of the

the regu-  
18, 1942  
ondensed

S. Essays  
ie second  
e group."<sup>6</sup>  
at he had  
: holdings  
ver of the  
elic assis-  
tion as to  
obtained

from the  
American  
Handling

m col-  
lues of  
ed for  
colors

Robinette shared many of the Southgate Collection discoveries with Hugh M. Clark (1886-1956), owner of Scott Publications, and Clark was likely responsible for the first listing of the "Set of 13" in the 1943 edition of the *Scott's Specialized* - none is listed in the 1942 edition.<sup>8</sup>

Mr. Robert H. "Bob" Feldman, Jr., the former owner of the "Set of 13," made his purchase from essay and proof specialist Falk Finkelburg in the early 1970s. Bob also owned two additional large die trial color proofs, which he believed to be duplicates of colors in the "Set of 13." His presumption was logical as the set was represented as complete when he bought it from Finkelburg. His subsequent purchase of two additional trial color proofs were presumed duplicates when they were offered at the Robert A. Siegel sale of the collection of art connoisseur, Rudolph Wunderlich, on February 10, 1971 - and why not... the catalog only listed 13 colors. Bob magnanimously sold me one of these "duplicates" in December 2009, the "carmine lake" color as listed in the *Specialized* (Figure 5).



Figure 5. Carmine Lake - One of the original "Set of 13" large die, trial color proofs.

"Bowled ovwere (*sic.*)" by the acquisition, I reported this rarity to *The American Stamp Dealer & Collector*, and they featured it as a "Favorite Stamp" item in their February 2010 issue (Figure 6).

On closer examination of the carmine lake proof, I observed the addition of pencil notations on reverse, which led to a process of ever-widening research to explore the source, meaning and extent of these markings. The analysis and explanation that follows may lead holders of similarly marked items to perform additional research in the documentation of their proof and essay material.

### Discovery & Hypothesis

The first-observed notation, "2¢" cursive in soft lead pencil on the reverse of the carmine lake proof (Figure 7), immediately piqued my interest in examining the reverse sides of the "Set of 13" and any other proofs in Mr. Feldman's collection.



During a subsequent visit, I noted that all trial colors in the "Set of 13" plus one other "duplicate" - the now, blue

Figure 7. Pencil notation on reverse of carmine lake trial color.

**Stamp Col**

What's carmine-lake?

What, good people, is that old standby color from the latter 19th century called carmine-lake. Well, it's in reader Bob Rufe's newly-appointed favorite "stamp," a color trial of Scott No. QE4, the 25 cents Special Handling stamp. Bob is just bowled ovwere by the striking quality of this shade and we think it deserves to be nominated in our "favorite stamp" competition. WHAT, good friends, is your favorite U.S. stamp? Email us right now and let us know: [Editor@AmericanStampDealer.com](mailto:Editor@AmericanStampDealer.com).

Figure 6. Favorite Stamp Feature in ASD&C magazine (shown with permission).



proof, exhibited similar pencil notations that corresponded precisely with the denominations of the ordinary stamps of the period, the 1922 series "Fourth Bureau" definitive stamps.

Table 1 provides a listing of all the penciled notations and corresponding color names for the Third and Fourth Bureau ordinaries and the Special Handling "Set of 15." As the original source and subsequent movement of these proofs since their production in 1925 is not known in complete detail, the source and "author" of the pencil notations was only speculative until recent confirmations received from the BEP.

TCP Set of 15	½¢ Hale Essay Set	Comparable Fourth Bureau	Color Sample	Scott-Listed Set Trial Colors (15)
	1¢	Deep Green		LDP - Approved Color
	2¢	Carmine		Carmine Lake
	3¢	Violet		Not Known
	4¢	Yellow Brown		Brown
	5¢	Dark Blue		Dark Blue
	6¢	Red Orange		Orange
	7¢	Black		Black (Alt Script)
	8¢	Olive Green		Olive Green
	9¢	Rose		Dull Rose
	10¢	Orange		Orange Yellow
	11¢	Greenish Blue		Light Blue Green
	12¢	Brown Violet		Dark Violet Brown
	13¢	Apple Green		Apple Green
	14¢	Blue		Blue (2015)
	15¢	Gray		Gray Black
	20¢	Carmine Rose		Carmine Rose (2015)
	30¢	Olive Brown		Gray Brown

Table 1. Set of 15 Trial Color Proofs have Third and Fourth Bureau Comparable Denominations Penciled on Reverse.



Figure 8a. Approved Deep Green Large Die Proof in Retained Files at the Bureau of Engraving & Printing.



Figure 8b. Control Number and "1¢ Green" Pencil Notation.

In an effort to piece together the origin of these artifacts, correspondence with the BEP over the past several months has provided two key archival data sets. First, the Bureau provided photo copies of both sides of an approved large die proof from the only retained 25¢ Special Handling die proof in their archives (Figures 8a and 8b). The face side clearly shows two penciled notations: "736" at lower left (the die number for the stamp), and "PS104," whose meaning is unknown to me.

The pencil notations on reverse of the retained proof are shown in Figure 8b, and seem to be in the same hand and penmanship as the notations of the other trial color proofs, as well as other essays and proofs pulled at about the same time, e.g., the set of nine Scott No. 551 Nathan Hale ½¢



Figure 9. Handwritten notation refers to a 20-cent Gate definitive stamp similar to that

essays, from

Placing the notation from evidence of

In hindsight - "The trial interesting of each of the

With the Fourth Bureau readily available from the 11, 1926, ar

## Supporti



Carmine (2c)



Olive Green (8c)



Apple Green (13c)

with the fourth Bu-

ling coloring "Set of their proof the BEP. piece of these are with several identified two ets. First, ed photo of an ap-proof from 5¢ Special f in their 1 and 8b). rly shows notations: t (the die imp), and leaning is

tations on ned proof e 8b, and ame hand ; the nota-trial color her essays about the set of nine 1 Hale 1/2¢

Green"

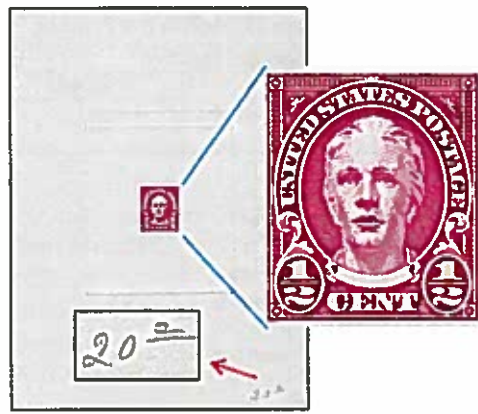


Figure 9. Hale Essay (Scott 551). Pencil notation refers to Carmine Rose color of 20¢ Golden Gate definitive stamp, Scott 567. The style is similar to that of other penciled notations.

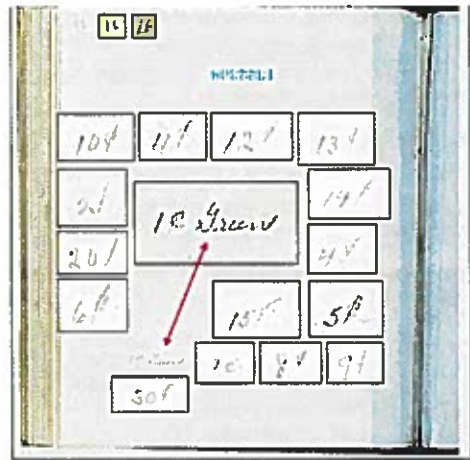


Figure 10. BEP Pencil Notations from reverse side of all 15 trial color proofs, superimposed on BEP archive copy of approved large die proof.

essays, from which the carmine rose color is shown in Figure 9.

Placing the pencil notations of each of the 15 trial color proofs adjacent to the notation from the BEP retained large die proof provides compelling, if not conclusive, evidence of the existence of 15 different colors (Figure 10).

In hindsight, the July 18, 1942 *Stamps* article also confirmed the pencil notations - "The trial colors in the Southgate Collection are not only unique, but exceptionally interesting due to the penciled notations on them that denote the color selected for each of the values of a series."

With the "Set of 15" trial color proofs now firmly established, the counterpart Fourth Bureau stamps are easily seen as comparable to the actual colors pulled from readily available production inks (Table 2). The 13¢ apple green color stamp of 1925 was from the Third Bureau issue; the Fourth Bureau 13¢ stamp was issued on January 11, 1926, and the ink color was actually "green."

### Supportive Data



Subsequently, I requested, and the BEP graciously provided, a tabular summary of proofs pulled in March 1925 from the 25¢ Special Handling stamp Die No. 736 (Table 3). These data are reproduced on Table 3 exactly as received. The

Table 2. Third and Fourth Bureau Equivalent Colors of the "Set of 15" Special Handling Trial Color Proofs.



Record of Impressions Printed in the Proving Room, Engraving Division			
Date Printed	Proof #	Disposition	Destroyed
			Date
7-Mar-25	1319883	M	3/9/1925
17-Mar-25	1321642	D	3/19/1925
	1321643	M	3/19/1925
	1321759	Mr. Hall	3/20/1925
18-Mar-25	1321760	Mr. Hall	3/18/1925
	1321837	Mr. Hall	3/20/1925
	1321838	Mr. Hall	3/23/1925
	1321867		3/23/1925
	1321868		
	1321869	D	3/23/1925
	1321903	Stamp Colors	3/23/1925
	1321904	Stamp Colors	
	1321905	Stamp Colors	
	1321906	Stamp Colors	
	1321907	Stamp Colors	
1321908	Stamp Colors		
1321909	Stamp Colors		
1321910	Stamp Colors		
1321911	Stamp Colors		
1321912	Stamp Colors		
1321913	Stamp Colors		
1321914	Stamp Colors		
1321915	Stamp Colors		
1321916	Stamp Colors		
1321917	Stamp Colors		
1321918	Stamp Colors		
1321919	Stamp Colors	3/31/1925	

Record of Impressions Printed in the Proving Room, Engraving Division			
Date Printed	Proof #	Disposition	Destroyed
			Date
March 21, 1925	1322305	D	3/23/1925
	1322306	D	3/23/1925
	1322307	M	3/23/1925
	1322308	D	3/23/1925 (BEP Coll.)
	1322616	Modeling	
	1322617	Modeling	
	1322618	Modeling	
	1322619	Modeling	
	1322620	Modeling	
	1322621	Modeling	Author's Collection
	1322622	Modeling	Private Collection
	1322623	Modeling	
	1322624	Modeling	
	1322625	Modeling	
1322626	Modeling		
1322627	Modeling		
1322628	Modeling	PMG's Collection	
1322629	Modeling		
1322630	Modeling	3/24/1925	
1322631	Modeling	3/24/1925	
1322632	Modeling	3/24/1925	
1322633	Modeling	3/24/1925	
1322634	Modeling	3/24/1925	

Table 3. Exact transcript from Bureau of Engraving & Printing Records of Die No. 736 Pulls in March, 1925. Author's Notes in Red.

Proof # Set 1321903 - 1321919 of "Stamp Colors" assuredly corresponds to the trial color proofs delineated in this manuscript, the "Set of 15," plus the approved color, plus one not yet accounted for.

Unfortunately, the control numbers that are usually entered directly on the proofs, have been scratched off these 15 large die trial color proofs, so that a precise cross reference to the records above cannot be established. There are many theories as to when and why these control numbers were scratched off. Most contacts speculate the numbers were removed to disguise the source at the time Hugh Southgate was given many production "favors" for services rendered to Bureau personnel.

Several conclusions may be drawn from these data, and a number of questions are also raised. Most pertinent to our subject, there were 17 pulls from March 18, 1925, Control Nos. 1321903 through 1321919, consecutively, for "Stamp Colors," the set of 15 and two which were noted as "Destroyed" on March 23 and 31, respectively. The significant question arises: What do the BEP designations really mean, specifically, "Disposition" (M, D, and Modeling), and "Destroyed" since we know at least some of these proofs were not, literally, destroyed - some still exist. For example, the large die proof retained in the BEP "Approved Impressions Binder for Miscellaneous Stamps" is printed with Control No. 1322308 and shown in Figures 8a & 8b, but in Table 3 is shown as "Destroyed." One theory is that the term means "has left the proving room floor." Were the first and last "Stamp Colors" pulled actually destroyed, or are there two more colors tucked away in a long-forgotten archive - perhaps a 3¢ violet, or a 50¢ lilac, neither of which is known to exist, but which would fill out the color palette for the Fourth Bureau Series stamps? Further, one of the 17 was very likely the 1¢

deep green pulled for si

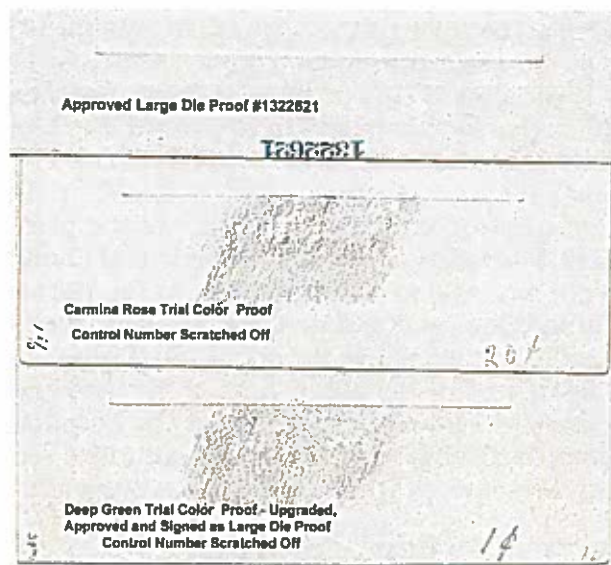
Four row the actual l deep green this author 736, Contr Alvin W. He proof was s The auction Handling st known sets of in 1946? die proofs c only 25¢ Sp

But wait!

There ha ed with the considered in public ha as mention tion, it app 1925, since proof as we started out ries definiti proof, prob the right of ment. When india paper



**Figure 12.** Reverse side of three proofs to illustrate where control numbers were scratched off the carmine rose (20¢, center) trial color proof and the deep green (1¢, bottom) "renegade" large die proof. An approved large die proof is shown on top, with control number 1322621 in an alternate location on the proof, for size comparison.



ors - probably by Southgate at the time the trial color proofs were removed from the BEP. The placement and size of these control numbers appear in the same approximate location on the reverse side of each proof. An approved large die proof *with* control number is shown superimposed on top, with the carmine rose trial color proof shown in center (with graphite applied to enhance the area where the control number was scratched off), and the "renegade" large die proof *without* control number shown at the bottom.

My hypothesis, restated from above, is that the deep green trial color was selected for the Special Handling stamp, elevating its status for catalog purposes from that of trial color proof to large die proof, but that its origin was in the "Stamp Colors" pulled on March 23, 1925, shown in Table 3, and subsequently dated and signed by Postmaster General Harry S. New on that same date. Further, it constitutes the "officially approved color" shown in the Brazer ad in Figure 4. The author welcomes verification and/or dissent that this was a practice of the day by the Bureau of Engraving and Printing.

### Analytical Confirmation - VSC-6000

With empirical confirmation in hand that the "duplicate" reds and blues were in-fact different, I set out to prove the "Set of 15" hypothesis by laboratory analysis. When viewed under bright daylight conditions, and even under frame on the show floor, with moderate fluorescent lighting conditions, the similar red and blue trial color proofs appear to be different. Shown here are scans made under the same conditions, Canon MG5220 at 600 dpi., without editing of any kind, and differences are apparent in both sets of the reds and blues (Figure 13). For whatever reason, and easily seen in these images, the "dark blue" appears to be a lighter shade of the color than the "blue" in both the trial colors and the 5¢ and 14¢ definitive issue stamps.



**Figure 13.** Images of the distinctive "reds" and "blues," pencil-marked on reverse: "2¢" -20¢ -5¢ and "14¢", corresponding to the Carmine Lake, Carmine Rose, Dark Blue, and Blue colors, respectively, of the Fourth Bureau definitive stamp colors for those specific denominations.

Following testing color and complete Spectral Cor III-SD X-Ray. The result shades, if not and 14b). Figure proofs evaluate and the pair



**Figure 14a.** V

**Figure 14b.** Carmine Rose



Following the recently developed protocols at the Postal Museum employed for testing color variations reported in this journal,<sup>10</sup> laboratory testing was scheduled and completed in two different sessions at the NPM in early 2014, first on the Video Spectral Comparator (VSC) 6000,<sup>11</sup> and later, for confirmation, on the Bruker Tracer III-SD X-Ray Fluorescence (XRF) spectrometer.

The results of duplicate scans on the VSC-6000 demonstrate distinctly different shades, if not different colors, for both the red and the blue trial colors (Figures 14a and 14b). Figure 14a illustrates the curves generated for all 15 of the large die trial color proofs evaluated; Figure 14b isolates the pair of “red” proofs, the upper set of curves, and the pair of “blue” proofs, the lower set of curves. Each curve is an average of

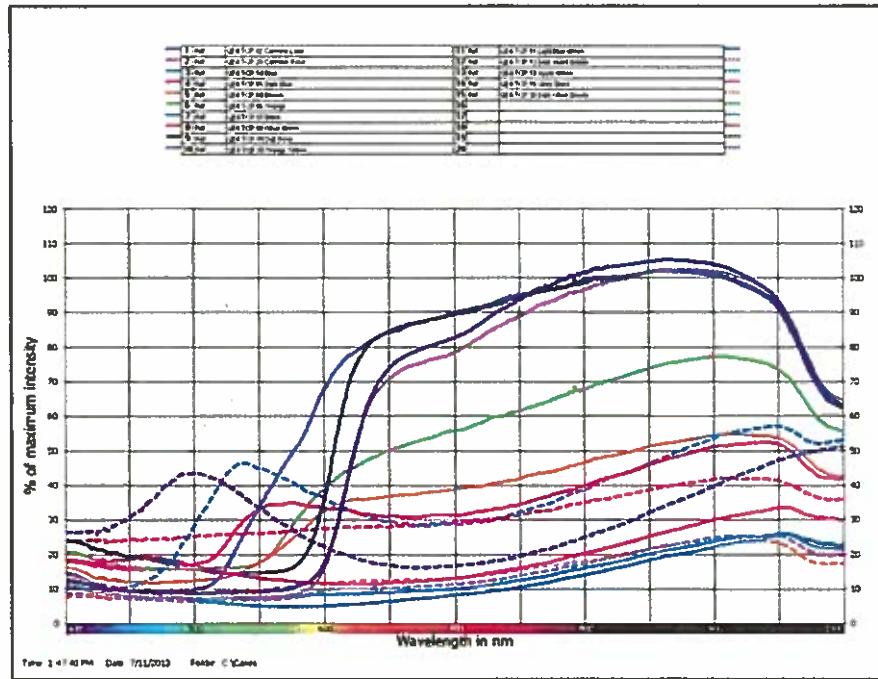


Figure 14a. VSC-6000 Spectrographic averages for 15 Different Special Handling Trial Color Proofs.

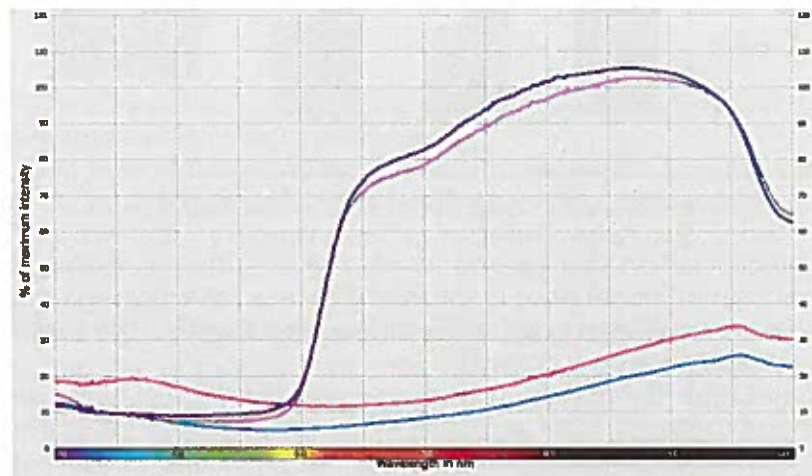


Figure 14b. VSC-6000 Line Graph Averages for Trial Color Proofs: Carmine Lake (Top Curve) vs. Carmine Rose (Second from Top); and Dark Blue (Second from Bottom) vs. Blue (Bottom Curve).

applied to renegade”

lor was se-  
poses from  
np Colors”  
signed by  
s the “offi-  
omes veri-  
Engraving

lues were  
y analysis.  
the show  
blue trial  
me condi-  
ces are ap-  
and easily  
color than  
s).



“20c” “5c”  
ors, respec-



four individual runs of the same proof from the dense color area to the left of the "C" in CENTS, and to the right of the "S" in CENTS.

### Analytical Confirmation – XRF

To gain an additional level of confidence in our color analysis, compositional differences in the colors were tested on the Bruker AXS Handheld Inc. S1PXRF Spectrum, using standard protocols as described in earlier articles in this journal, and these are summarized here (Tables 4 and 5).

Bruker testing was done without filter for 180 seconds with vacuum, current at 6A, high voltage at 40kV, corrected for escape background, 12 sq. mm. sample area. Elements identified from the Bruker elemental analysis were Aluminum (Al), Silica (Si), Strontium (Sr), Sulfur (S), Rhodium (Rh), Potassium (K), Calcium (Ca), Barium (Ba), Chromium (Cr), Iron (Fe), Nickel (Ni), Copper (Cu), Zinc (Zn), and Lead (Pb), but only those elements that have significantly different photon counts, i.e., pointing to different pigment composition, are shown in Tables 4 and 5.

The Bayes deconvolution method was used to analyze the photon counts for the elements present in the stamp paper and ink; duplicate tests were run for each sample and averaged. Test samples correspond to those used in the VSC-6000 testing. These photon counts are summarized in Tables 4 and 5.

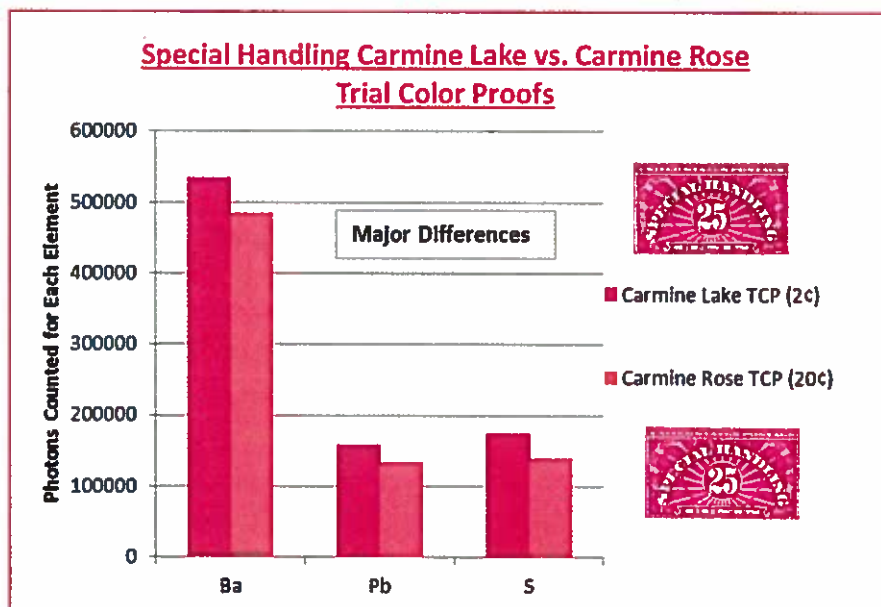


Table 4. XRF Photo Counts by Element for the "Red" Samples.

Table 4 demonstrates that the red proofs exhibit different shades of color with only minor composition variance in the inks. The inks are sufficiently different, however, that having been used to print images on the same day, they had to have been taken from different ink pots or wells.

By comparison with the reds, Table 5 demonstrates that the blue proofs are composed of significantly different pigments or dyes. The photon counts for elemental Calcium (Ca), Iron (Fe) and Zinc (Zn) are diagnostic evidence that these proofs were printed from different colors and are not duplicates.

Photons Counted for Each Element

### Ridgway

Sharp-eyed Figure 12. These "renegade" colors are a selection of colors that respectively seem to be



Figure 15. Ridgway and 12c Four

attributable and stimulat

In relative referenc work became way's death ely, and foo

At color or hue at the Dela found the 1 names: 38m not found, 1 similar to o

of the "C"

onal differ-  
Spectrum,  
d these are

current at  
mple area.  
(Al), Silica  
(a), Barium  
Lead (Pb),  
... pointing

s for the el-  
ch sample  
ing. These

color with  
rent, how-  
have been

fs are com-  
elemental  
roofs were

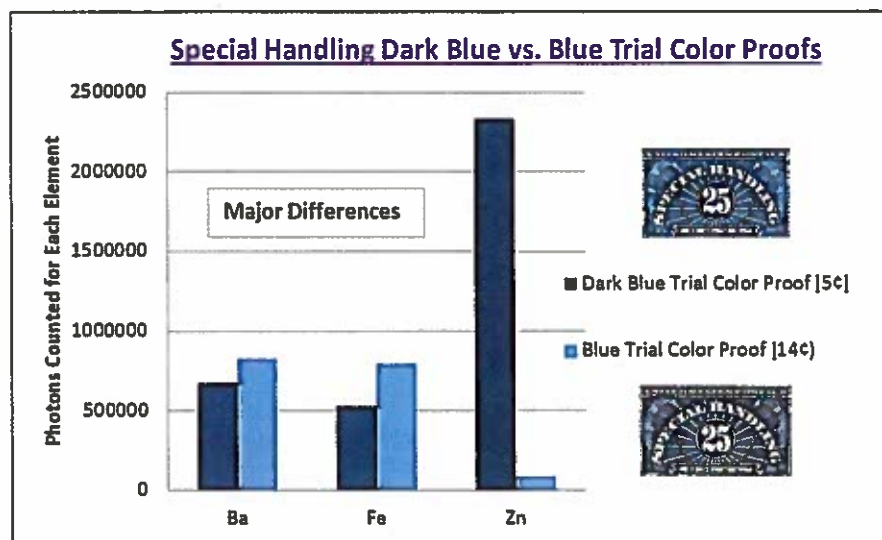


Table 5. XRF Photo Counts by Element for the "Blue" Samples.

### Ridgway Numbers

Sharp-eyed observers will have noticed some additional pencil markings in Figure 12. These are found on the reverse of the carmine rose trial color proof and the "renegade" deep green large die proof, and are enlarged here (Figure 15), along with a selection of similar pencil markings from the reverse of other trial color proofs, respectively, olive green, orange-yellow and dark violet brown colors. The notations seem to be in a different hand (Brazer?) than the denomination markings probably



Figure 15. Ridgway Numbers on Reverse of Selected trial color proofs: the 1¢, 20¢, 8¢, 10¢ and 12¢ Fourth Bureau Colors.

attributable to Southgate, and are only presented here to acknowledge their existence and stimulate communication as to their source.

In 1912 Robert Ridgway, the noted ornithologist, completed an authoritative reference book for describing colors for birds.<sup>12</sup> From his biography, "The work became a standard reference used by ornithologists for decades after Ridgway's death, as well as specialists in such wide-ranging fields as mycology, philately, and food coloring."

At the risk of oversimplification, the coding consists of a number - the color or hue, and one or more letters - the tones. Consulting a copy of this work at the Delaware Museum of Natural History, Kennett Pike, Wilmington, DE, I found the following approximate descriptions for the penciled Ridgway color names: 38m/ - not found, but adjacent to 37m, diamine green (1¢ green); 1j/o not found, but adjacent to 1i = carmine (20¢ carmine rose); 21m/o = dark citrine, similar to olive green (8¢ olive green); 17h not found, but adjacent to 17f = pale



orange yellow (10¢ orange); and 69m = violet carmine, (on the "prime" plates, 69m = dusky auricular purple, which closely matched the trial color proof color, 12¢ brown violet).

The exercise in trying to understand the Ridgway classification system is challenging, and the conclusions drawn here are only a crude interpretation.

## Dealer's Codes

Not unlike the informative pencil notations added by BEP employees, and/or Southgate and Brazer, others have added notations that remain on reverse of these trial color proofs (Figure 16). The first of these in Figure 16 has been verified as having been penciled by the buyer at the time of purchase of the then-thought-to-be du-

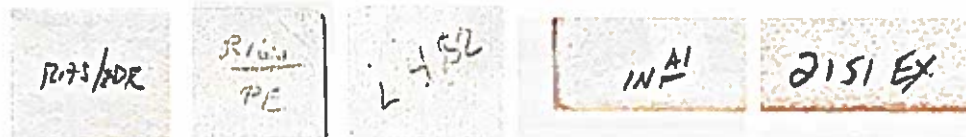


Figure 16. Dealer's Code Pencil Notations on Reverse Side of trial color proofs.

plicate blue and carmine rose trial color proofs. "RAS/PDR" was his dealer code for the source and pricing of these proofs - Robert A. Siegel sale, \$180.

The second and third notations, R160/PE and L4B2 codes are unidentified, and are presented to elicit response from others having an explanation for these unknowns.

The fourth notation above, the bold INAI, appears on reverse of all four denominations of a Special Handling large die proof set not detailed in this article, the 1933 FDR presentation set of four yellow-green proofs sold on February 4, 1946 by Harmer, and again on June 29, 1990 by Siegel. None of my correspondents to-date has an explanation for this marking. The fifth notation in Figure 16 is a photographic marking; the proof set was Lot #2151 in the 1990 Siegel sale.

## Conclusions

Is the whole greater than the sum of its parts? Studies performed on trial color proofs and large die proofs recently acquired from a trove hidden from view for over 40 years, have uncovered the following discoveries.

**Two new colors exist for the unique set of Special Handling trial color proofs - blue and carmine rose. They are newly listed in the 2015 edition of the Scott Specialized Catalogue of U.S. Stamps and Covers.**

The two colors are visually different, and each color has been separated by both spectral and chemical analyses.

BEP archives show that 17 trial colors were pulled, the "Set of 15," plus a confirmed deep green trial color proof that became the large die proof when that specific color was selected for the Special Handling stamp.

The 17th trial color has not been accounted for, whether destroyed, or circulating in a collection outside this closely held grouping of proofs. The best current guess for such a missing color is "violet."

Reverse side pencil notations on these proofs, examined with new BEP data in hand, shed light on the quantities and identification of individual proofs, as well as their provenance.

## Unanswered

Sixteen colors counted for exist?

When are proofs separated?

Who are the unidentified were they added?

In the BEP is meant by "Modeling?"

immediately

Do any exist in this manuscript?

## Acknowledgments

The analysis of the trial color proofs at the Postal Museum.

I would like to thank the use of the assistance of the collector Ajamian, Robert Lee, and Jim Lee for their help.

## References

### Auction Catalogs

4 Feb  
Gree  
25¢-  
Colle  
S22

8 No  
(QE1  
Inscr  
very  
S200

8 No  
(QE#  
Hein

10 F  
Proo  
Lake  
x 6"  
CV 5

### Unanswered Questions – Request for Information:

Sixteen of the 17 “Stamp Colors” pulled on March 18, 1925 have now been accounted for. What was the appearance, color and disposition of #17? Does it still exist?

When and how did the two wayward, formerly considered duplicate, trial color proofs separate from the original “Set of 13” prior to 1942?

Who applied the pencil notations on the trial color proofs, and when? What do the unidentified notations indicate on both the trial colors and the large die proofs? When were they applied, by whom and why?

In the Bureau’s Record of Impressions in the Proving Room book (Table 3), what is meant by the Disposition column terms “M,” “D,” “Mr. Hall,” “Stamp Colors,” and “Modeling?” Are blank spaces, e.g. for “Date,” indicative of repetition for the entry immediately above?

Do any other proofs exist for the Special Handling stamps other than those cited in this manuscript?

### Acknowledgements

The analytical instruments used for detailed nondestructive testing and analysis of the trial color proofs and stamps are located at the Smithsonian National Postal Museum in Washington, DC.

I would like to thank Tom Lera at the NPM for training and assistance in the use of the analytical instruments, as well as interpretation of the results, and Greg Ajamian, Ron Burns, Mike Plett, Harry Charles, Bob Feldman, Ken Lawrence and Jim Lee for their peer review and comments.

### References

#### Auction Catalogs - Chronological Listing of Trial Color and Large Die Proof Listings

4 February 1946. SPECIAL HANDLING: Lot No. 93, 1925-28, 10¢ to 25¢ Green complete set of 4. Four other sets known. 10¢-335800, 15¢-333061, 20¢-332970, 25¢-332945.....QE1P1-QE4aP1; H. R. Harmer, Inc. sale of “The Postage Stamp Collection of FRANKLIN DELANO ROOSEVELT” Part One, USA ; CV S600, realized \$225.

8 November 1957. Lot 677, 1925 Special Handling Large Die Proofs, 10¢ to 25¢ (QE1-4aP, *sic.*, now QE1P1 – QE4P1) the four varieties complete, India on card, Inscribed with date of approval and signed “Harry S. New – Postmaster General,” very fine, scarce. Irwin Heiman sale of Caroline Prentice Cromwell collection. CV \$200+, realized \$77.50.

8 November 1957. Lot 678, Trial Color Large Die Proofs of the 25¢ Special Handling. (QE4TC) the 13 different colors complete, India on card, very fine, and very rare set. Irwin Heiman sale of Caroline Prentice Cromwell collection, CV S650, realized \$180.

10 February 1971. Lot 1039, 25¢ Dark Blue, Special Handling, Large Die Trial Color Proof, On India (QE4TC). Die sunk on 8 x 6” card, Very Fine. Lot 1040, 25¢ Carmine Lake, Special Handling, Large Die Trial Color Proof, on India (QE4TC). Die sunk on 8 x 6” card, Very Fine. Robert A. Siegel sale of Rudolph Wunderlich collection. Both lots CV \$100, realized \$80 each.

29 June 1990. Lot 2150, 10¢ - 25¢ Special Handling, Large Die Proofs. (QE1P1-QE4aP1, *sic.*, now QE1P1 - QE4P1). Lists sizes and signing dates by Harry S. New, PMG, "some minor corner card flaws, o/w Very Fine." Robert A. Siegel sale of the Morton Dean Joyce estate. CV S3600+, realized \$2300.

29 June 1990. Lot 2151, 10¢ - 25¢ Special Handling, Large Die Proofs. (QE1P1-QE4P1, *sic.*, now QE1P1 - QE4aP1, the 1933 FDR presentation set). Yellow-Green shade (Unlisted in Scott, *sic.*, at that time). Details as above. CV S3600. realized \$900.

14 March 2006. Lot 417, 1925-28, 10¢-25¢ Special Handling, Large Die Proofs. (QE1P1-QE3P1, QE4aP1), die sunk on 200x150mm cards, approved and signed by Harry S. New. 25¢ slight card crease not affecting proof, Very Fine. Matthew Bennett International sale of The "Chesapeake" Collection of U.S. Proofs and Essays. CV S3,600+, realized \$6,037.50.

#### Endnotes:

1. Mueller, Barbara R., Editor, Southgate Essays and Proofs, *The Essay-Proof Journal*, Volume 40, No. 4, Fall 1983, p. 171.
2. Rich, Stephen G., Editor, In Memoriam - Hugh MacLellan Southgate, *Precancel Bee*, Volume 14, No. 3, 15 November, 1940, p. 99, Verona, NJ.
3. —, H. A. Robinette Dies, *Stamps*, Volume 66, No. 7, 12 February, 1949, p. 272.
4. Lee, James E., LLC (2014, November 3). Dr. Clarence Brazer & Falk Finkelburg Files, Notes and Records, Cary, IL.
5. Brazer, Clarence W., Southgate Proofs, *The American Philatelist*, August 1942, pp. 725-726.
6. *Ibid.*
7. *Ibid.*
8. —, Unlisted Large Die Proofs, *Stamps*, 4 April, 1942, p. 30.
9. Mueller, Barbara R., "The Origin of the FDR U.S. Die Proofs," *The Essay-Proof Journal*, Volume 48, No. 1, 1st Quarter 1991, p. 19.
10. Lera, Thomas, "Determination of the Pigment Used in the 1893 4 Cent Columbian Color Error (Scott 233a)," *The Collectors Club Philatelist*, Volume 93 No. 3, May-June 2014, pp. 153-160.
11. Herenden, David L., James A. Allen, and Thomas Lera, "Philatelic Shade Discrimination Based on Measured Color," reprint based on a paper in *London Philatelist*, Volume 120, No. 1384, April 2011, pp. 105-117.
12. Ridgway, Robert, *Color Standards and Color Nomenclature*, Washington D.C., A. Hoen & Co., Baltimore, MD, 1912.

## How Com

by Edward J



Flemington,  
email and th  
and with m

Hiram E.  
the younge  
APS as its p  
portant agri  
ents, he par  
lately to clo  
George V a  
as well as th  
most impor  
North Ame  
served as p  
local teleph  
York convey  
The first

