

INDEX

[New names in CAPITAL LETTERS; other names in valid use in *italic letters*; names not in valid use in ordinary Roman letters. Page number of main reference in bold face numbers (25).]

- Acanthacis* 87, 90
Acanthogorgia 84
 aspera **85**
 schrammi 84
acerosa, *Gorgonia* 240
acerosa, *Pseudopterogorgia* 131, 224, 227, **240, 244**
acerosa, *Pterogorgia* 240
acropora, *Muricea* 163
affinis, *Plexaurella* 172
africana, *Telesto* 39
Agaricoides 52
agassizii, *Neospongodes* 56
ALBATROSSAE, *Pseudopterogorgia*
 228, **249**
Alcyonium asbestinum 62
Alertigorgia orientalis 66
Alexella 31
americana, *Antillogorgia* 236
americana, *Gorgonia* 236, 242
americana, *Pseudopterogorgia* 131, 227, **242, 255**
americana, *Pterogorgia* 236
Ammothea polyanthes 62, 64
anceps, *Eunicea* 170
anceps, *Gorgonia* 275
anceps, *Pterogorgia* 242, **275**
anceps, *Xiphigorgia* 275
anguiculoides, *Plexaurella* 175
Anthomastus 51, 52
Anthopodium **78**
 rubens 78, **79**
Anthothela 65, **67**
 boninensis 66
 grandiflora 68, 70
 pacifica 70

TROPICALIS **68**
antillarum, *Pterogorgia* 229
antillarum, *Stylatula* 308
Antillogorgia 224
 americana 236
antipathes, *Gorgonia* 112, 114
antipathes, *Plexaura* 112
appressa, *Muricea* 119
arbuscula, *Pterogorgia acerosa* forma
 240
Arthrogorgia 296
Asbestia 61
asbestinum, *Alcyonium* 62
asbestinum, *Briareum* **62**
aspera, *Acanthogorgia* **85**
asperula, *Eunicea* 119, 123, 136, **145**,
 150
atlantica, *Ellisella* 281, 287
atlantica, *Eumuricea* 184
atlantica, *Muricea* 180, 182, **184**, 186,
 242
Aulopora tenuis 36
aurantiaca, *Telesto* 32, 49
australiensis, *Pseudopterogorgia* 224
ballini, *Iciligorgia* 66
barbadensis, *Ellisella* 280, **281**
barbadensis, *Juncella* 281
BARBADENSIS, *Lophogorgia* 197,
 199
barbadensis, *Scirpearia* 281
Bebryce 88, 90
bicolor, *Plexauropsis* 92, 107
bipinnata, *Gorgonia* 229, 266
bipinnata, *Pseudopterogorgia* 224, 226,
 229, 236
bipinnata, *Pterogorgia* 229, 240

- blanquillensis*, *Pseudopteroorgia* 224, 227, **238**
blanquillensis, *Pterogorgia* 238
boninensis, *Iciligorgia* 66
brasiliensis, *Leptogorgia* 216
brasiliensis, *Stylatula* 308
braziliana, *Plexaurella* 170
Briareum 61, 70
 asbestinum 62, 75
 gorgonoideum 62
Caliacis 90
Caligorgia 296
 verticillata 297
Calligorgia 296
Callipodium 75, 78, 81
Callogorgia 294, **296**
 gracilis 297
 verticillata **297**
Calozostron 295
calyculata, *Eunicea* 119, 124, 136, 150, **154**
calyculata, *Gorgonia* 154, 158
Calyptrophora 296
Candidella 295
CARDINALIS, *Lophogorgia* 198, **201**
caribaea, *Neospongodes* 56
Carijoa 31, 32
 rupicola 39
caribaeorum, *Erythropodium* **75**
caribaeorum, *Xaenia* 75
carybaeorum, *Erythropodium* 75
ceratophyta var. *flava*, *Gorgonia* 216
ceratophyta var. *rubra*, *Gorgonia* 216
ceratosa, *Diodogorgia* 73
cervicornis, *Diodogorgia* 73
Chalcogorgia 299
Chrysogorgia 299
citrina, *Gorgonia* 162, 275
citrina, *Pterogorgia* 274, **275**
citrina, *Xiphigorgia* 275
clavaria, *Eunicea* 154, 158
clavaria, *Suberia* 70, 71
clavaria, *Tripalea* 71, 78
CLAVIGERA, *Eunicea* 119, 123, **147**
Clavularia *rusei* 39
Coelogorgia 30
Coeloplana 42, 131
corallina, *Telesto* 33, **34**, 46
Coralliophila 75, 261
Corallium *vanderbilti* 73
CORONATA, *Eunicea* *calyculata* forma 124, **158**
crassa, *Eunicea* 154
crassa, *Gorgonia* 109, 112
crassa, *Plexaurella* 172
crassa, *Pseudoplexaura* 109
crevauxi, *Gorgonaria* 213
CRUCIS, *Pseudoplexaura* 108, **115**
crustata, *Solanderia* 73
curvata, *Plexaurella* 170
Cyathopodium 36
 elegans 34, 36
 tenuis 36
cylindrica, *Plexaurella* 170
cylindrica, *Scirpearia* 284
CYMOSA *Gorgonia mariae* f. 270
Dactylophthya 52
dentata, *Eunicensis* 184
diadema, *Stylatula* **308**
dichotoma, *Gorgonia* 170
dichotoma, *Plexaurella* 131, 169, **170**, 242
dichotoma var. *grisea*, *Plexaurella* 175
diffusa, *Leptogorgia* 204
dilatata, *Gorgonia* 272
dilatata, *Phyllogorgia* **272**
Diodogorgia 65, **71**, 81
 ceratosa 73
 cervicornis 73
 nodulifera 73
dubrovskyi, *Plexaurella* 109
Echinomuricea 88, 90
edwardsi, *Plexaura* 104
ehrenbergi, *Eunicea* 132, 134
elegans, *Cyathopodium* 34, 36
elegans, *Stylatula* 308
elegans, *Muricea* 191
elegans, *Pacificogorgia* **213**
elegans, *Rhipidogorgia* 213
ELISABETHAE, *Pseudopteroorgia* 228, **246**
Ellisella 279, **280**
 atlantica 281, 287
 barbadensis 280, **281**
 elongata 280, **284**
 funiculina 281
 grandiflora 281
 grandis 281, 287
ellisiana, *Pterogorgia* 240, 242

- elongata*, *Ellisella* 280, **284**
elongata, *Gorgonia* 284
elongata, *Muricea* 180, 181, **189**
elongata, *Scirpearia* 284
Erythropodium 65, **75**
 caribaeorum **75**
 marquesarum 62, 75
 polyanthes 62, 64, 75
esper, *Eunicea* 132, 134
esper, *Plexaura* 112, 114
Eugorgia euryale 222
 medusa 220
 sthen 220
Eumuricea 179
 atlantica 184
Eunephtya nigra **55**
Eunicea 92, 95, 104, **118**
 anceps 170
 asperula 119, 123, 136, **145**, 150
 calyculata 119, 124, 136, 150, **154**
 calyculata f. *CORONATA* 124, **158**
 clavaria 154, 158
 CLAVIGERA 119, 123, **147**
 crassa 154
 ehrenbergi 132, 134
 esper 132, 134
 fusca 119, 122, **138**, 150
 grandis 154, 158
 hicksoni 104, 106
 humilis 104, 162
 hummelincki 136
 KNIGHTI 119, 124, **150**
 laciniata 119, 122, **140**, 150
 laxispica 119, 120, **125**
 lugubris 140
 mammosa 119, 121, 129, **132**
 multicauda 154, 158
 multicauda gordon 154
 nutans 172
 PALMERI 119, 121, **129**
 pinta 119, 120, **125**, 255
 ransoni 119
 rousseau 142
 sagoti 144
 sayoti 144
 sparsiflora 154, 158
 succinea 119, 121, **134**, 145
 succinea f. *plantaginea* 121, **136**

Eunicea
 turgida 147, 150
 tourneforti 119, 123, **142**, 150
 tourneforti f. *atra* 123, **144**
 sp. indet. 124, **160**
Eunicella 92, 94, **118**
 albatrossi 118
 marquesarum 104
 modesta 118
 tenuis 118
Eunicensis dentata 184
Euniceopsis 92, **138**
euryale, *Eugorgia* 222
euryale, *Leptogorgia* 215, **222**
favula, *Telest* 42
festiva, *Pterogorgia* 198
flabellum, *Gorgonia* 258, **259**, 262
flabellum, *Rhipidigorgia* 259
flagellosa, *Gorgonia* 112
flagellosa, *Pseudoplexaura* 108, **112**
flagellum, *Scirpearia* 281
flava, *Gorgonia ceratophyta* var.
 216
flavida, *Gorgonia* 163,
flavida, *Muriceopsis* 162, **163**
flavida, *Plexauropsis* 163,
flavula, *Telest* 32, 34, **42**, 46
flexuosa, *Muricea* 163
flexuosa, *Plexaura* **104**, 114
flexuosula, *Plexaura* 104
foliata, *Phyllogorgia* 272
frauenfeldii, *Titanideum* **77**
friabilis, *Plexaura* 172
friabilis, *Plexaurella* 172
frondosa, *Phyllogorgia* 272
fruticulosa, *Telest* 32, 34, 43, **46**
junculina, *Ellisella* 281
fusca, *Eunicea* 119, 122, **138**, 150
fusca, *Plexaura* 138
fusiifera, *Plexaurella* 169, **179**
gordon, *Eunicea multicauda* 154
Gorgonella 194
Gorgonia 194, **257**
 acerosa 240
 americana 236, 242
 anceps 275
 antipathes 112, 114
 bipinnata 229, 266
 calyculata 154, 158

- Gorgonia*
 ceratophyta var. *flava* 216
 ceratophyta var. *rubra* 216
 citrina 162, 275
 crassa 109, 112
 crevauxi 213
 dichotoma 170
 dilatata 272
 elongata 284
flabellum 258, **259**, 262
flabellum f. *occatoria* **261**
 flagellosa 112
 flavida 163
 gracilis 218
 hartti 213
 homomalla 97
 humosa 97
 laxispica 125
 lima 182, 184, 186
 madrepora 132, 134
 MARIAE 258, **266**
 MARIAE f. *CYMOSA* **270**
 MARIAE f. *PLUMOSA* **270**
 miniata 210
 multicauda 154
 muricata 182, 184, 186
 muricata variet 132
 palma 195
 petechizans 198
 pinnata 242
 plantaginea 136
 porosa 109
 pumicea 204
 punicea 204
 purpurea 199
 quercus folium 272
 sanguinolenta 198
 sarmentosa 194
 setacea 218
 setosa 240
 succinea 134
 sulphurea 162
ventalina 258, **262**
 verticillata 297
 viminalis 195, 216
 violacea 199
 virgulata 195, 216
 gorgonoides, *Alcyonium* 62
 gorgonoideum, *Briareum* 62
gracilis, *Callogorgia* 297
gracilis, *Gorgonia* 218
gracilis, *Pterogorgia* 218
grandiflora, *Anthothela* 68, 70
grandiflora, *Ellisella* 281
grandiflora, *Plexaurella* 168, 173
grandis, *Ellisella* 281, 287
grandis, *Eunicea* 154,
grandis, *Euniceopsis* 154
grisea, *Plexaurella* 169, **175**
guadalupensis, *Nicella* 290
guadalupensis, *Pterogorgia* 274, **277**
guadalupensis, *Verrucella* 290
guadalupensis, *Xiphigorgia* 277
 hartti, *Gorgonia* 213
 hebes, *Leptogorgia* 207
hebes, *Lophogorgia* 197, **207**
 heteropora, *Plexaurella* 170
 hicksoni, *Eunicea* 104, 106
 homomalla, *Gorgonia* 97
homomalla, *Plexaura* **97**
homomalla f. *kükenthali*, *Plexaura* 100
 humilis, *Eunicea* 104, 162
 humilis, *Muricea* 163
 hummelincki, *Eunicea* 136
 HUMMELINCKI, *Pseudoptero-gorgia*
 227, **244**, 271
 humosa, *Gorgonia* 97
 Hymenogorgia 271
Hypnogorgia 89, 90
 HYSTRIX, *Pseudoptero-gorgia* 228, **253**
Iciligorgia 65, **66**
 ballini 66
 boninensis 66
 schrhammi **66**
Iridogorgia 299
Juncella *barbadensis* 281
kallos, *Pseudoptero-gorgia* 226, 235
Keroeides 82, 84
 koreni 84
 richardii 83
 KNIGHTI, *Eunicea* 119, 124, **150**
Kophobelemnion 302, 304
koreni, *Keroeides* 84
kükenthali, *Plexaura* *homomalla* f. 99,
100
kunzei, *Plexaurella* 172
laciniata, *Eunicea* 119, 122, **140**, 150
 laevigata, *Plexaura* 112

- laxa*, *Muricea* 181, 186, **188**
laxispica, *Eunicea* 119, 120, **125**
laxispica, *Gorgonia* 125
Leptogorgia 193, **214**
 brasiliensis 216
 diffusa 204
 euryale 215, **222**
 hebes 207
 medusa 215, **220**
 miniata 210
 pumicea 204
 purpurea 204
 rathbunii 204
 rubropurpurea 207
 sanguinolenta 198
 setacea 208, 215, **218**
 sitheno 215, **220**
 studerii 204
 sulfurea 216
 tenuis 216
 virgulata 208, 215, **216**, 218
Lignella **82**
 richardii **83**
 lima, *Gorgonia* 182, 184, 186
 Litigorgia 194
Lophogorgia 193, **194**
 BARBADENSIS 197, **199**
 CARDINALIS 198, **201**
 hebes 197, **207**
 miniata 196, **210**
 pumicea 198, **204**
 sanguinolenta 196, **198**
 violacea 196, **199**
 lugubris, *Eunicea* 140
luzonica, *Pseudopterogorgia* 224
 madrepora, *Gorgonia* 132, 134
mammosa, *Eunicea* 119, 121, 129, **132**
 MARCGRAVII, *Pseudopterogorgia* 225,
 255
 MARIAE, *Gorgonia* 258, **256**
 MARIAE f. CYMOSA, *Gorgonia* **270**
 MARIAE f. PLUMOSA, *Gorgonia* **270**
 marquesarum, *Erythropodium* 62
 marquesarum, *Eunicella* 104
 medusa, *Eugorgia* 220
medusa, *Leptogorgia* 215, **220**
Metallogorgia 299
 miniata, *Gorgonia* 210
 miniata, *Leptogorgia* 210
miniata, *Lophogorgia* 196, **210**
 minuta, *Plexaurella* 177
mülleri, *Renilla* 302
 multicauda, *Eunicea* 154, 158
 multicauda, *Gorgonia* 154
 muricata, *Gorgonia* 182, 184, 186
 muricata var., *Gorgonia* 132
muricata, *Muricea* 180, **182**
Muricea 86, 92, 94, **179**
 acropora 163
 appressa 119
 atlantica 180, 182, **184**, 186, 242
 elegans 191
 elongata 180, 181, **189**
 flexuosa 163
 humilis 163
 laxa 181, 186, **188**
 muricata 180, **182**
 pendula 181, 188, **191**
 PINNATA 181, **186**
 spicifera 180, 182, 184, 186
 sulphurea 162
Muriceopsis 92, 94, **161**
 flavida 162, **163**
 PETILA 162, **165**
 sulphurea **162**
 tuberculata 163
 mutica, *Plexaura* 104
 NAVIA, *Pseudopterogorgia* 228, **250**,
 255
 NELLEAE, *Telesto* 32, 34, **48**
Neosimnia 242, 261
Neospongodes **55**
 agassizii 56
 caribaea 56
 portoricensis **56**
Nicella 279, **287**
 guadalupeensis **290**
 SCHMITTI **288**
Nidalia **52**
 occidentalis **53**
 rigida 53
 nigra, *Eunephthya* **55**
 nina, *Plexaura* **100**, 255
 nodulifera, *Diodogorgia* **73**
 nodulifera, *Solanderia* 73
 nutans, *Eunicea* 172
 nutans, *Plexaurella* 168, **172**, 179
 obesa, *Plexaurella* 170

- occatoria*, *Gorgonia flabellum* f. **261**
occatoria, *Rhipidigorgia* 261
occidentalis, *Nidalia* **53**
 OPERCULATA, *Telesto* 32, 33, **36**
oppositipinna, *Pseudopterogorgia* **224**
orientalis, *Alertigorgia* 66
Ovulum (= *Cyphoma*) *gibbosum* 272
pacifica, *Anthothela* 70
Pacificigorgia 193, **212**
 elegans **213**
 palma, *Gorgonia* 195
 PALMERI, *Eunicea* 119, 121, **129**
Paramuricea 87, 90
Parastenella 295
Paratelesto rosea 32
parvispiculata, *Pseudopterogorgia oppositipinna* var. 224
 pelasgica, *Telesto* 44
pendula, *Muricea* 181, 188, **191**
Pennatula reniformis 301
 petechizans, *Gorgonia* 198
 PETILA, *Muriceopsis* 162, **165**
Phyllogorgia 194, **271**
 dilatata **272**
 foliata 272
 frondosa 272
 quercifolia 272
 quercifolia var. *lacerata* 272
 pinnata, *Gorgonia* 242
 PINNATA, *Muricea* 181, **186**
pinnata, *Pseudopterogorgia* **224**
 pinnata, *Pterogorgia* 240
pinta, *Eunicea* 119, 120, **125**, 255
Placogorgia 88, 90
plantaginea, *Eunicea succinea* f. **136**
plantaginea, *Gorgonia* 136
Pleurogorgia 299
Plexaura 92, **95**, 104
 antipathes 112
 edwardsi 104
 esperii 112, 114
 flexuosa 96, 97, **104**, 114
 flexuosula 104
 friabilis 172
 fusca 138
 homomalla 96, **97**
 homomalla f. *kühenthali* 97, 99, **100**
 laevigata 112
 mutica 104
 Plexaura
 nina 96, 97, **100**, 255
 porosa 109
 ramosa 109
 salicornoides 104
 turgida 109, 147
 viminalis 195
 wagenaari 114
 Plexaurella 92, 94, **167**
 affinis 172
 anguiculoides 175
 braziliana 170
 crassa 172
 curvata 170
 cylindrica 170
 dichotoma 131, 169, **170**, 242
 dichotoma var. *grisea* 175
 dubrovskyi 109
 friabilis 172
 fusifera 169, **179**
 grandiflora 168, **173**
 grisea 169, **175**
 heteropora 170
 kunzei 172
 minuta 177
 nutans 168, **172**, 179
 obesa 170
 porosa 112
 pumila 169, **177**
 tenuis 177
 teres 172, 175
 vanderhorsti 109
 vermiculata 172, 175
 vermiculata var. *porosa* 109
 verrucosa 173, 175
 Plexauropsis 92, 107, 160
 bicolor 92
 flavida 163, 165
 puertorealis 163, 165
 tricolor 97
 Plumarella 293
 PLUMOSA, *Gorgonia MARIAE* f. **270**
polyanthes, *Amothea* 62, 64
polyanthes, *Erythropodium* 62, 64
porosa, *Gorgonia* 109
porosa, *Plexaura* 109
porosa, *Plexaurella* 112
porosa, *Pseudoplexaura* 108, **109**
portoricensis, *Neospongodes* 56

- presbytes*, *Virgularia* 306
Primnoa 294
Primnoeides 292
Pseudocladochonus 30
Pseudoplexaura 92, 95, 96, 107
 crassa 109
 CRUCIS 108, 115
 flagellosa 108, 112
 porosa 108, 109
 wagenaari 108, 114
Pseudopterogorgia 104, 193, 224
 acerosa 131, 224, 227, 240, 244
 ALBATROSSAE 228, 249
 americana 131, 227, 242, 255
 australiensis 224
 bipinnata 224, 226, 229, 236
 blanquillensis 224, 227, 238
 ELISABETHAE 228, 246
 HUMMELINCKI 227, 244, 271
 HYSTRIX 228, 253
 kallos 226, 235
 luzonica 224
 MARCGRAVII 225, 255
 NAVIA 228, 250, 255
 oppositipinna 224
 oppositipinna var. *parvispiculata* 224
 pinnata 224
 rigida 224, 227, 236
Pterogorgia 193, 224, 272
 acerosa 240
 americana 236
 anceps 242, 274, 275
 antillarum 229
 bipinnata 229, 240
 blanquillensis 238
 citrina 274, 275
 ellisiana 240, 242
 festiva 198
 gracilis 218
 guadalupensis 274, 277
 pinnata 240
 rigida, *acerosa* var. 236
 sparsiramosa 246
 turgida 198
Pterostenella 294
 puertorealis, *Plexauropsis* 163, 165
 pumicea, *Gorgonia* 204
 pumicea, *Leptogorgia* 204
 pumila, *Plexaurella* 169, 177
 pumicea, *Gorgonia* 204
 pumicea, *Lophogorgia* 198, 204
 purpurea, *Gorgonia* 199
 purpurea, *Leptogorgia* 204
 quercifolia var. *lacerata*, *Phyllogorgia* 272
 quercifolia var. *quercifolia*, *Phyllogorgia* 272
 quercus folium, *Gorgonia* 272
 Radicipes 299
 ramosa, *Plexaura* 109
 ransoni, *Eunicea* 119
 rathbunii, *Leptogorgia* 204
 reniformis, *Pennatulata* 301
 reniformis, *Renilla* 301
Renilla 300
 mülleri 302
 reniformis 301
Rhipidogorgia 257
 elegans 213
 flabellum 259
 occatoria 261
 richardii, *Gorgonia* 83
 richardii, *Keroeides* 83
 richardii, *Lignella* 83
 rigida, *Nidalia* 53
 rigida, *Pseudopterogorgia* 224, 227, 236
 rigida, *Pseudopterogorgia acerosa* var. 236
 rigida, *Scirpearia* 281
 rigida var. *tenuis*, *Scirpearia* 281
 rigida, *Telesto* 36
 Riisea 279, 290
 riisei, *Telesto* 32, 33, 38, 39
 rosea, *Paratelesto* 32
 rousseaui, *Eunicea* 142
 rubens, *Anthopodium* 78, 79
 rubra, *Gorgonia ceratophyta* var. 216
 rubropurpurea, *Leptogorgia* 207
 rupicola, *Carijoa* 39, 42
 rupicola, *Telesto* 39, 42
 Rusea 290
 rusei, *Clavularia* 39
 sagoti, *Eunicea* 144
 salicornoides, *Plexaura* 104
 sanguinea, *Telesto* 32, 34, 43, 44, 47
 sanguinolenta, *Gorgonia* 198
 sanguinolenta, *Leptogorgia* 198
 sanguinolenta, *Lophogorgia* 196, 198

- sarmentosa, Gorgonia 194
 sayoti, Eunicea 144
 SCHMITTI, *Nicella* 288
schrammi, *Acanthogorgia* 84
 Scirpearia 280
 barbadensis 281
 cylindrica 284
 elongata 284
 flagellum 281
 rigida 281
 rigida var. *tenuis* 281
Sclerobelemnon 304
 theseus 304
Semperina 66, 67, 70
 setacea, Gorgonia 218
setacea, *Leptogorgia* 208, 215, 218
setacea, *Xiphigorgia* 222
setosa, Gorgonia 240
Siphonogorgia 52
 agassizii 56
 caribaea 56
smithii, *Telesto* 32
Solanderia 73
 crustata 73
 nodulifera 73
Solenocaulon 66, 67
Solenopodium 61, 62
sparsiflora, Eunicea 154, 158
sparsiramosa, *Pterogorgia* 246
spicifera, *Muricea* 180, 182, 184, 186
stheno, *Eugorgia* 220
stheno, *Leptogorgia* 215, 220
studerii, *Leptogorgia* 204
Stylatula 307
 antillarum 308
 brasiliensis 308
 diadema 308
 elegans 308
Suberia 70
 clavaria 70, 71
 höllikeri 70
suberosum, *Titanideum* 77
succinea, Eunicea 119, 121, 134, 145
succinea f. *plantaginea*, Eunicea 136
succinea, Gorgonia 134
sulphurea, *Leptogorgia* 216
sulphurea, Gorgonia 162
sulphurea, *Muricea* 162
sulphurea, *Muriceopsis* 162
Swiftia 89, 91
Telesco 31
Telesto 30, 31, 32, 78
 africana 39
 aurantiaca 32, 49
 corallina 33, 34, 46
 favula 42
 flavula 32, 34, 42, 46
 fruticulosa 32, 34, 43, 46, 49
 NELLEAE 32, 34, 48
 OPERCULATA 32, 33, 36
 pelasgica 44
 rigida 36
 riisei 32, 33, 38, 39
 rupicola 39, 42
 sanguinea 32, 34, 43, 44, 47
 smithii 32
Telestula 30, 31
tenuis, *Cyathopodium* 76
tenuis, *Leptogorgia* 216
tenuis, *Plexaurella* 177
tenuis, *Scirpearia rigida* var. 281
teres, *Plexaurella* 172, 175
Thesea 89, 91
theseus, *Sclerobelemnon* 304
Thouarella 294
Titanideum 65, 77
 suberosum 77
 frauenfeldii 77
tournefortii, Eunicea 119, 123, 142, 149
tournefortii f. *atya*, Eunicea 123, 144
Tozeuma 242
Trachymuricea 88, 90
Trichogorgia 299
tricolor, *Plexauropsis* 97, 99
Tripalea 65, 70
 clavaria 70, 71, 78
 TROPICALIS, *Anthothela* 68
tuberculata, *Muriceopsis* 163
turgida, Eunicea 147, 150
turgida, *Plexaura* 109, 147
turgida, *Pterogorgia* 198
vanderbilti, *Corallium* 73
vanderhorsti, *Plexaurella* 109
ventalina, *Gorgonia* 258, 262
vermiculata, *Plexaurella* 172, 175
vermiculata var. *porosa*, *Plexaurella* 109
Verrucella guadalupensis 290
verrucosa, *Plexaurella* 173, 175

- verticillata, Caligorgia 297
verticillata, Callogorgia 297
verticillata, Gorgonia 297
Villogorgia 87, 90
viminalis, Gorgonia 195, 216
viminalis, Plexaura 195
violacea, Gorgonia 199
violacea, Lophogorgia 196, 199
Virgularia 306
 presbytes 306
virgulata, Gorgonia 195, 215
virgulata, Leptogorgia 208, 215, 216, 218
wagenaari, Plexaura 114
wagenaari, Pseudoplexaura 108, 114
Xaenia caribaeorum 75
Xiphigorgia 224, 272
 anceps 275
 citrina 275
 guadalupensis 277
 setacea 222
Zoobotryon pellucidum 42

PLATES

PLATE I

1. *Pseudoplexaura porosa* (Houttuyn), stout form, from the Florida Keys. Height, 45 cm. (USNM 50497)
2. *Pseudoplexaura porosa* (Houttuyn), typical form, from Bahamas. Height, 28 cm. (14386)
3. *Pseudoplexaura wagnaari* (Stiasny), from Florida Keys. Height, 30 cm. (50761)
4. *Eunicea* (*Eunicea*) *palmeri* spcc. nov., from Florida Keys. Height, 50 cm. (50760)
5. *Plexaura homomalla* (Esper), forma *kükenthali* Moser, from the Florida Keys. Height, 39 cm. (50477)
6. *Plexaura homomalla* (Esper), typical form, from Curaçao. Height, 25 cm. (50308)

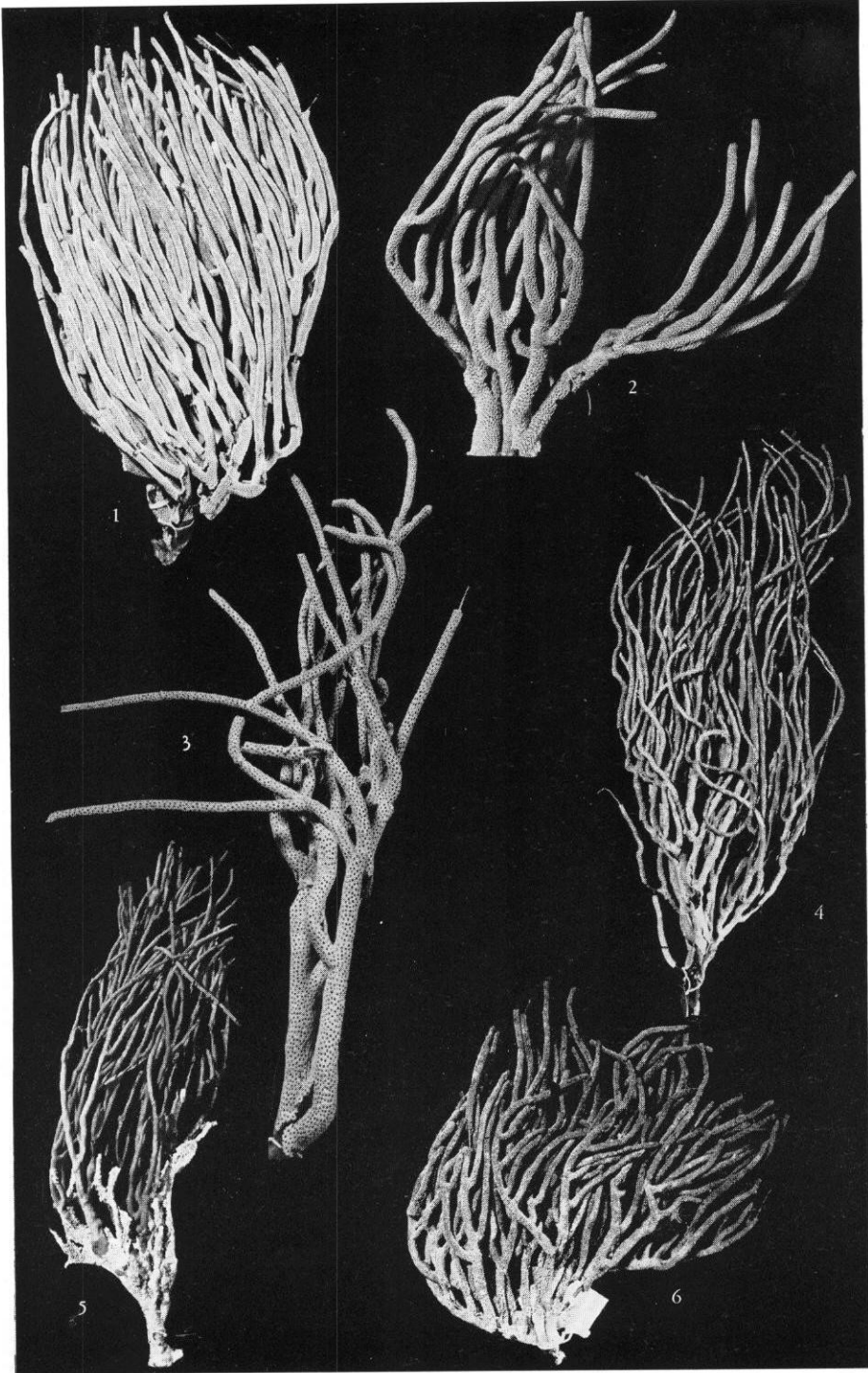


PLATE II

1. *Eunica* (*Eunica*) *mammosa* Lamouroux, from the Bahamas. Height, 16 cm. (USNM 14367)
2. *Eunica* (*Eunica*) *succinea* (Pallas), typical form, from St. Barthélemy. Height, 19 cm. (50318)
3. *Eunica* (*Euniceopsis*) *asperula* Milne Edwards & Haime, from Key West, Fla. Height, 55 cm. (50752)
4. *Eunica* (*Eunica*) *palmeri* spec. nov., from Biscayne Bay, Fla. Height, 30 cm. (Holotype, 50747)
5. *Eunica* (*Eunica*) *succinea* (Pallas), forma *plantaginea* (Lamarck), from St. John. Height, 30 cm. (50266)
6. *Eunica* (*Euniceopsis*) *tourneforti* Milne Edwards & Haime, forma *atra* Verrill, from Bermuda. Height, 22 cm. (50080)
7. *Eunica* (*Euniceopsis*) *tourneforti* Milne Edwards & Haime, typical form, from the Dry Tortugas. Height, 28 cm. (USNM 50275)
8. *Muriceopsis sulphurea* (Donovan), from Brazil. Height 11 cm. (5285)

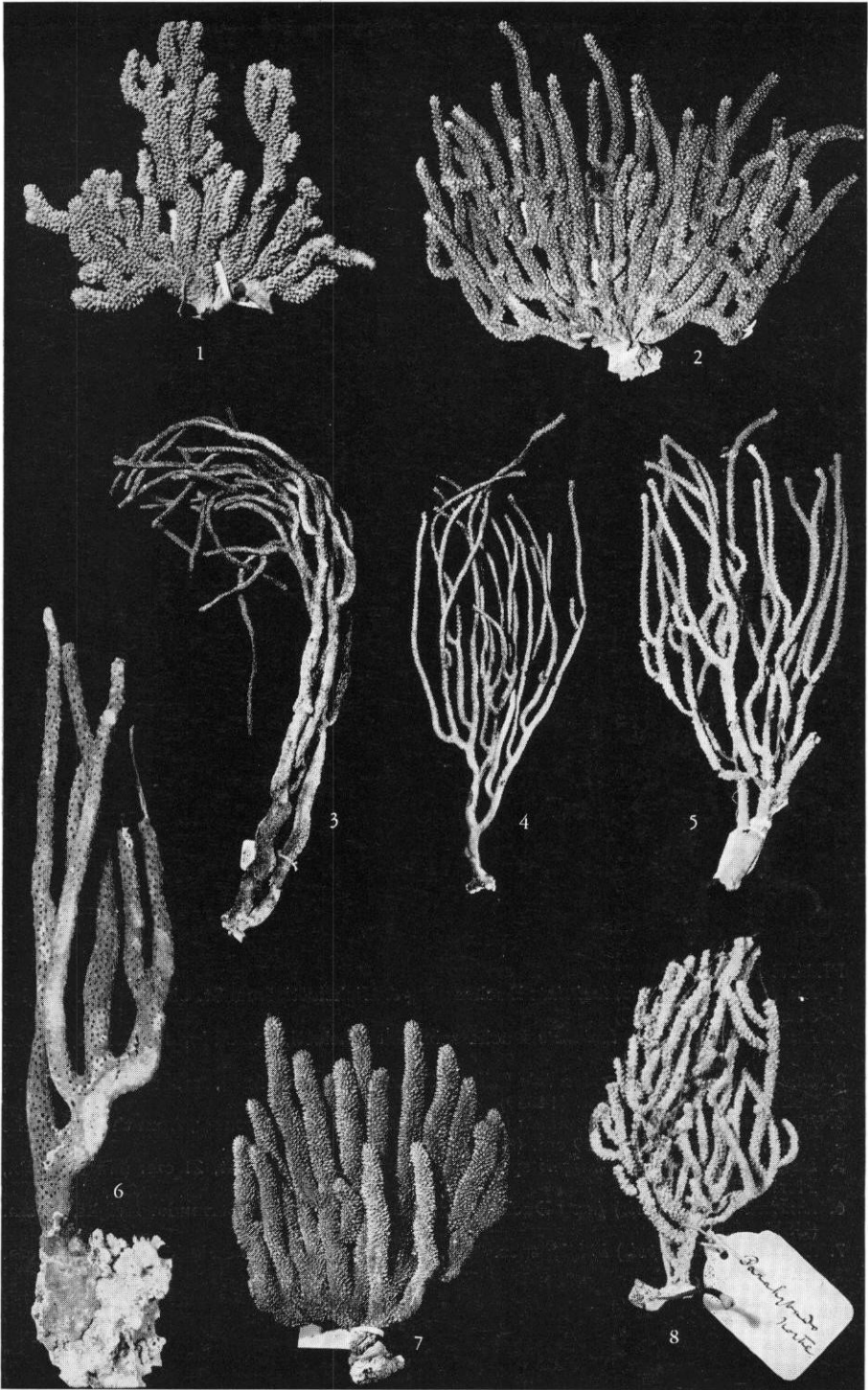


PLATE III

1. *Eunicea* (*Euniceopsis*) *laciniata* Duchassaing & Michelotti, from St. Christopher. Height, 31 cm. (USNM 50330)
2. *Eunicea* (*Euniceopsis*) *laciniata* Duchassaing & Michelotti, from Florida. Height, 14 cm. (50373).
3. *Eunicea* (*Euniceopsis*) *calyculata* (Ellis & Solander), typical form, from New Providence, Bahamas. Height, 47 cm. (14389)
4. *Eunicea* (*Euniceopsis*) *calyculata* (Ellis & Solander), forma *coronata*, from the Campeche Bank, Mexico. Height, 19 cm. (50686)
5. *Eunicea* (*Euniceopsis*) *knighti* spec. nov., from Florida. Height, 21 cm. (Marine Lab., Florida State Univ.)
6. *Eunicea* (*Euniceopsis*) *fusca* Duchassaing & Michelotti, from Bermuda. Height, 17 cm. (USNM 50077)
7. *Eunicea* (*Euniceopsis*) *knighti* spec. nov., from the Gulf coast of Florida. Height, 24 cm. (50692)

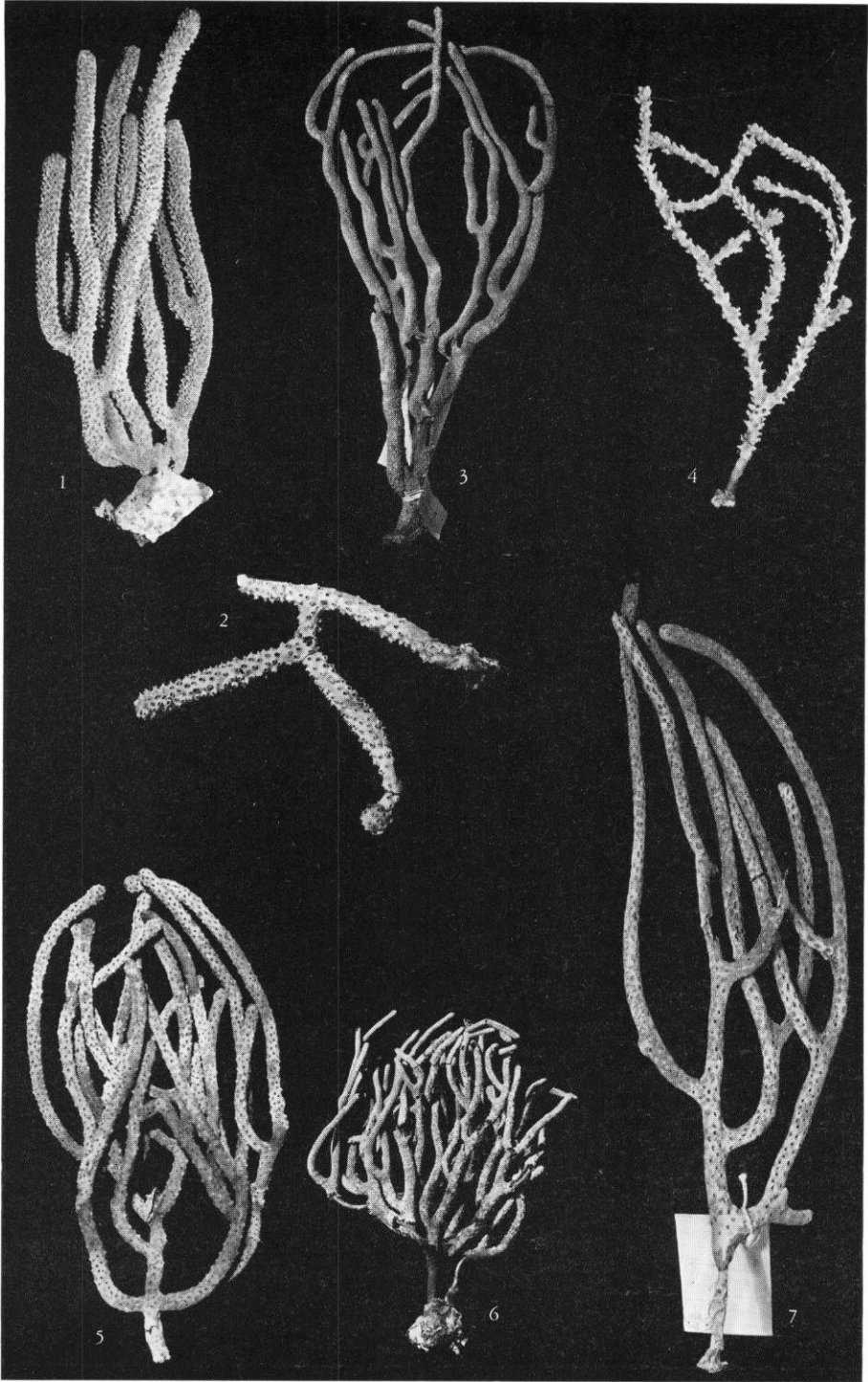


PLATE IV

1. *Muriceopsis flavida* (Lamarck), from Dominica. Height, 27 cm. (USNM 50344)
2. *Muriceopsis petila* spec. nov., from Florida, off Fernandina. Height, 15.5 cm. (Holotype, 50382)
3. *Eunicea* (*Euniceopsis*) *clavigera* spec. nov., from Bermuda. Height, 27 cm. (50076)
4. *Plexaura flexuosa* Lamouroux, from the Bahamas. Height, 20 cm. (50352)

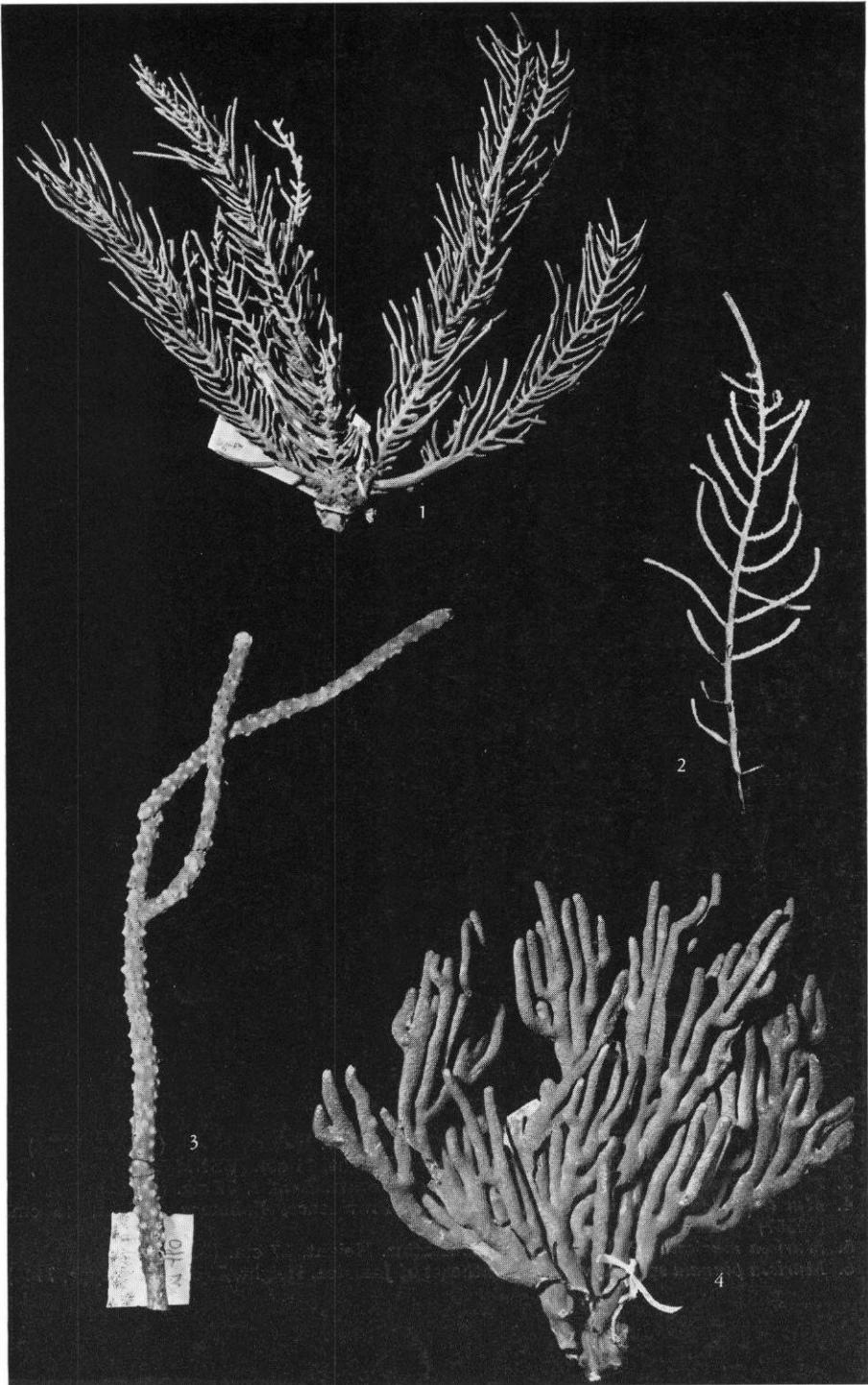


PLATE V

1. *Muricea elongata* Lamouroux, from the Florida Keys. Height, 47 cm. (USNM 50724)
2. *Muricea laxa* Verrill, from the Dry Tortugas. Height, 11 cm. (USNM 50240)
3. *Muricea pendula* Verrill, from Gulf coast of Florida. Height, 37 cm. (44222)
4. *Muricea atlantica* (Kükenthal), from New Providence, Bahamas. Height, 46 cm. (50557)
5. *Muricea muricata* (Pallas), from St. Eustatius. Height, 27 cm. (50313)
6. *Muricea pinnata* spec. nov., from southeast of Jamaica. Height, 26 cm. (Holotype, 7148)

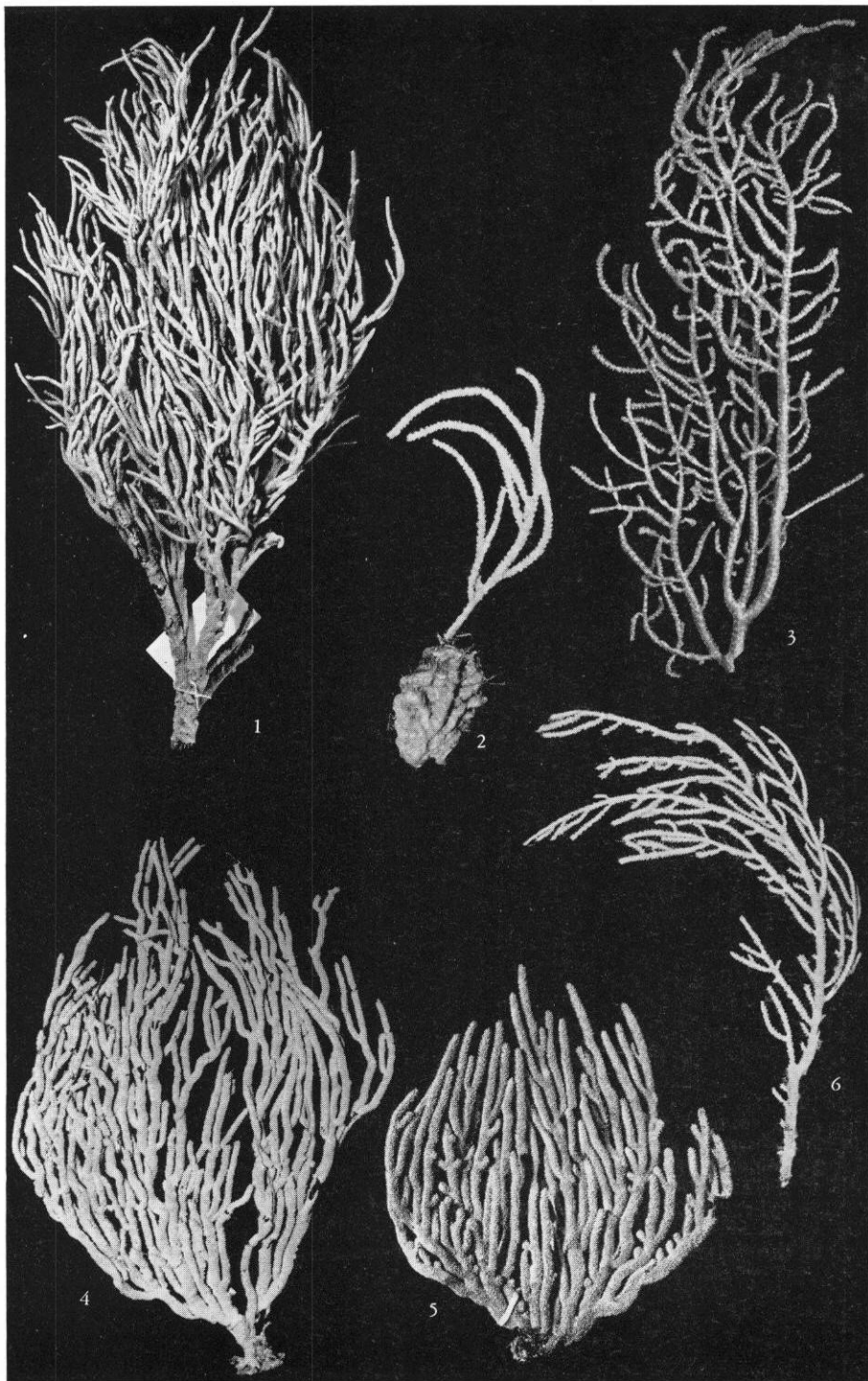


PLATE VI

1. *Plexaurella pumila* Verrill, from Brazil. Height, 15 cm. (USNM 5267)
2. *Plexaurella pumila* Verrill, from Bahia, Brazil. Height, 12 cm. (5279)
3. *Plexaurella pumila* Verrill, from Parahyba do Norte, Brazil. Height, 21 cm. (5268)
4. *Plexaurella grisea* Kunze, from St. Christopher. Height, 56 cm. (50534)
5. *Plexaurella grandiflora* Verrill, from Brazil. Height, 16 cm. (5314)
6. *Plexaurella dichotoma* (Esper), from Anguilla. Height, 11 cm. (50410)
7. *Plexaurella dichotoma* (Esper), from Anguilla. Height, 19 cm. (50410)

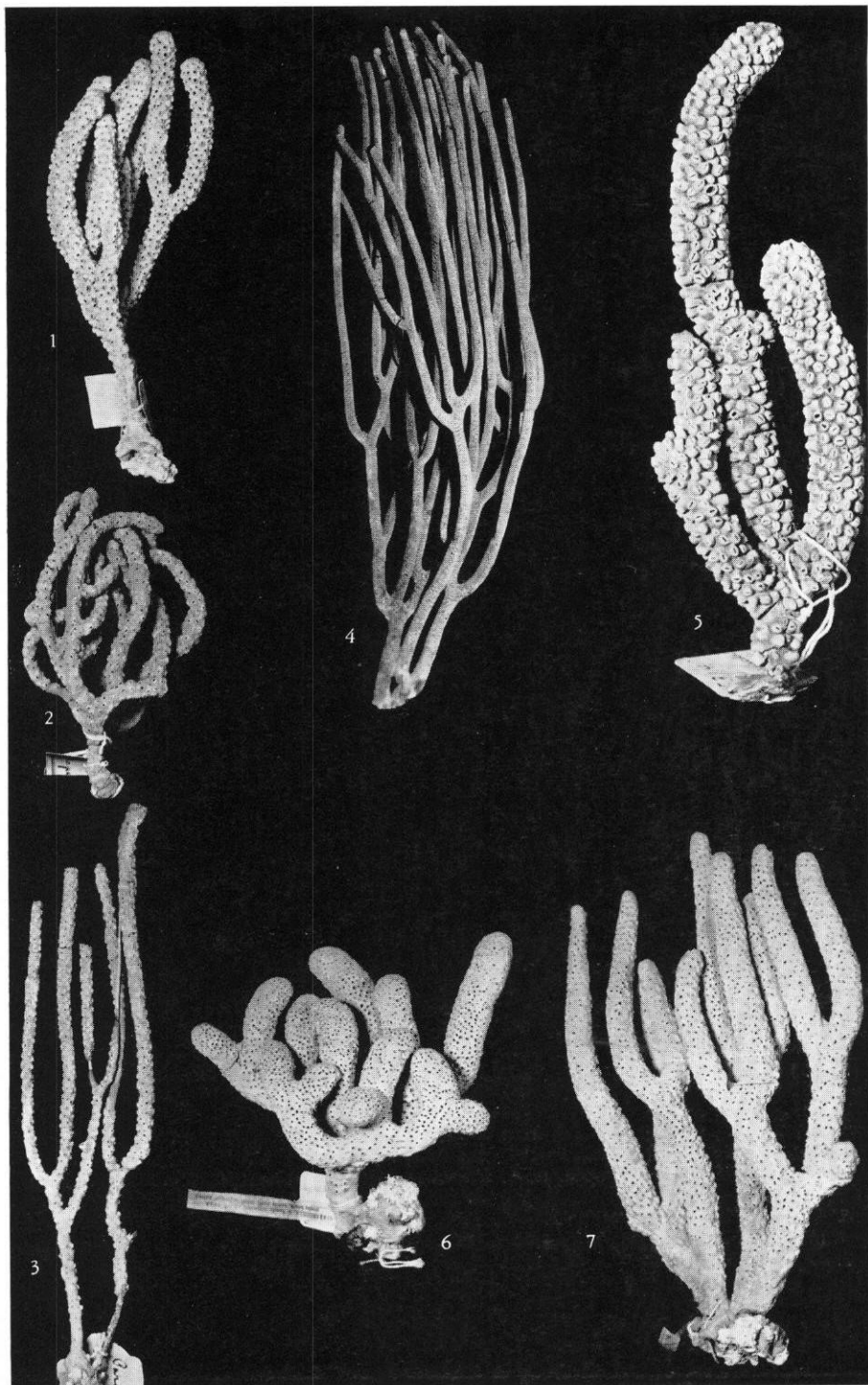


PLATE VII

1. *Lophogorgia violacea* (Pallas), from Paqueta, Brazil. Height, 10 cm. (USNM 17329)
2. *Lophogorgia* sp. indet., from Paqueta, Brazil. Height, 9 cm. (50226)
3. *Lophogorgia violacea* (Pallas), from Rio de Janeiro. Height, 10.5 cm. (50225)
4. *Lophogorgia hebes* (Verrill), from Texas. Height, 40 cm. (49751)
5. *Lophogorgia cardinalis* spec. nov., from the Florida coast near Palm Beach. Height, 13 cm. (49711)
6. *Lophogorgia punicea* (Milne Edwards & Haime), from Rio de Janeiro. Height, 14 cm. (633)
7. *Leptogorgia virgulata* (Lamarck), from the Gulf coast of Florida. Height, 35 cm. (6915)

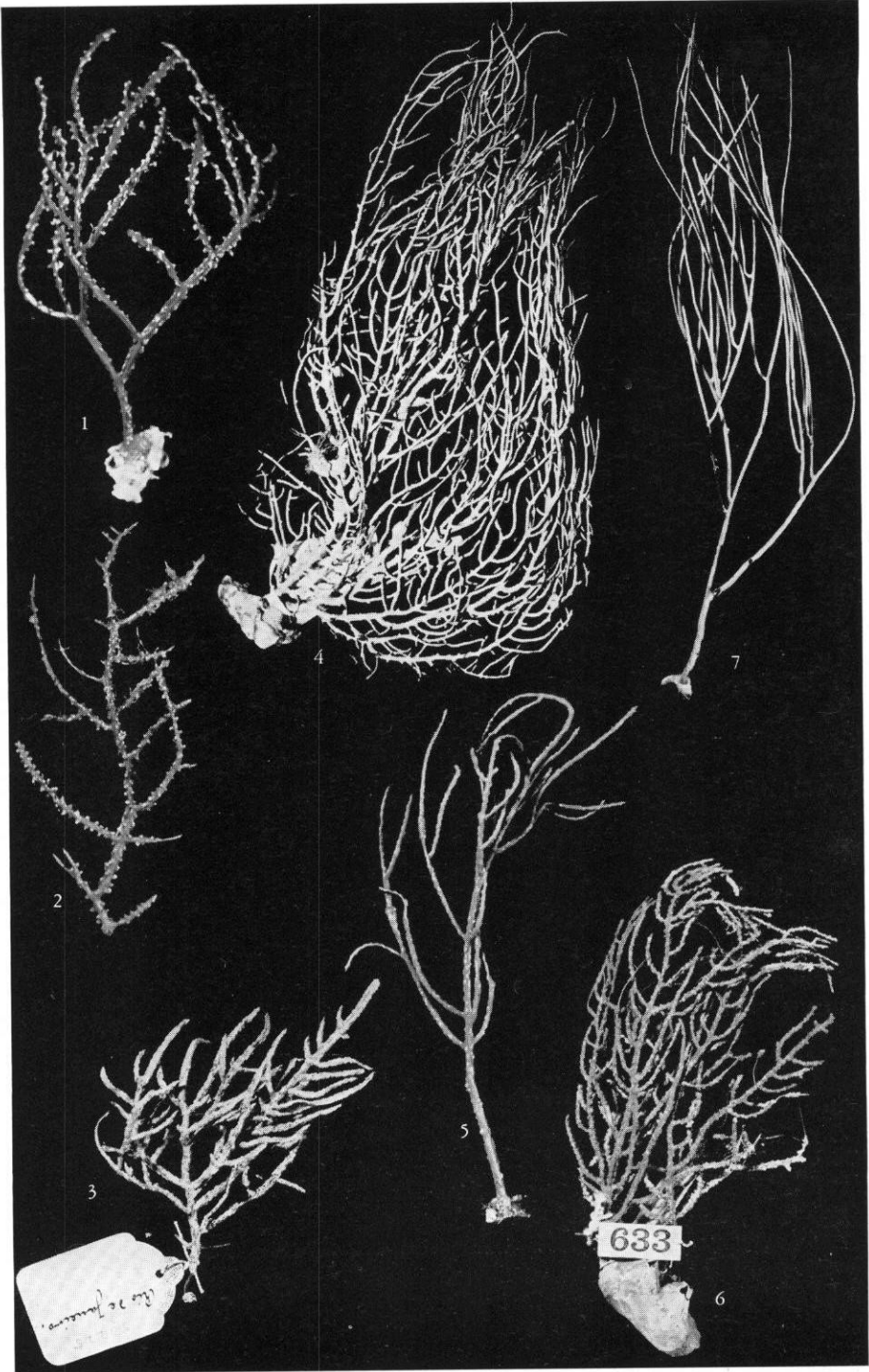


PLATE VIII

1. *Pseudopterogorgia albatrossae* spec. nov., from between Jamaica and Haiti. Height, 40 cm. (Holotype, USNM 50233)
2. *Pseudopterogorgia elisabethae* spec. nov., from Cuba. Height, 26 cm. (Holotype, 34679)
3. *Pseudopterogorgia bipinnata* (Verrill) from Cumaná, Venezuela. Height, 22 cm. (Holotype, MCZ 5080)
4. *Pseudopterogorgia hummelincki* spec. nov., from Anguilla. Height, 20 cm. (Paratype, USNM 50204)
5. *Pseudopterogorgia hummelincki* spec. nov., from Anguilla. Height, 12.5 cm. (Holotype, 50203)
6. *Pseudopterogorgia americana* (Gmelin), from Curaçao. Height, 30 cm. (52053)
7. *Pseudopterogorgia navia* spec. nov., from Hispaniola. Height, 20 cm. (USNM 50070)

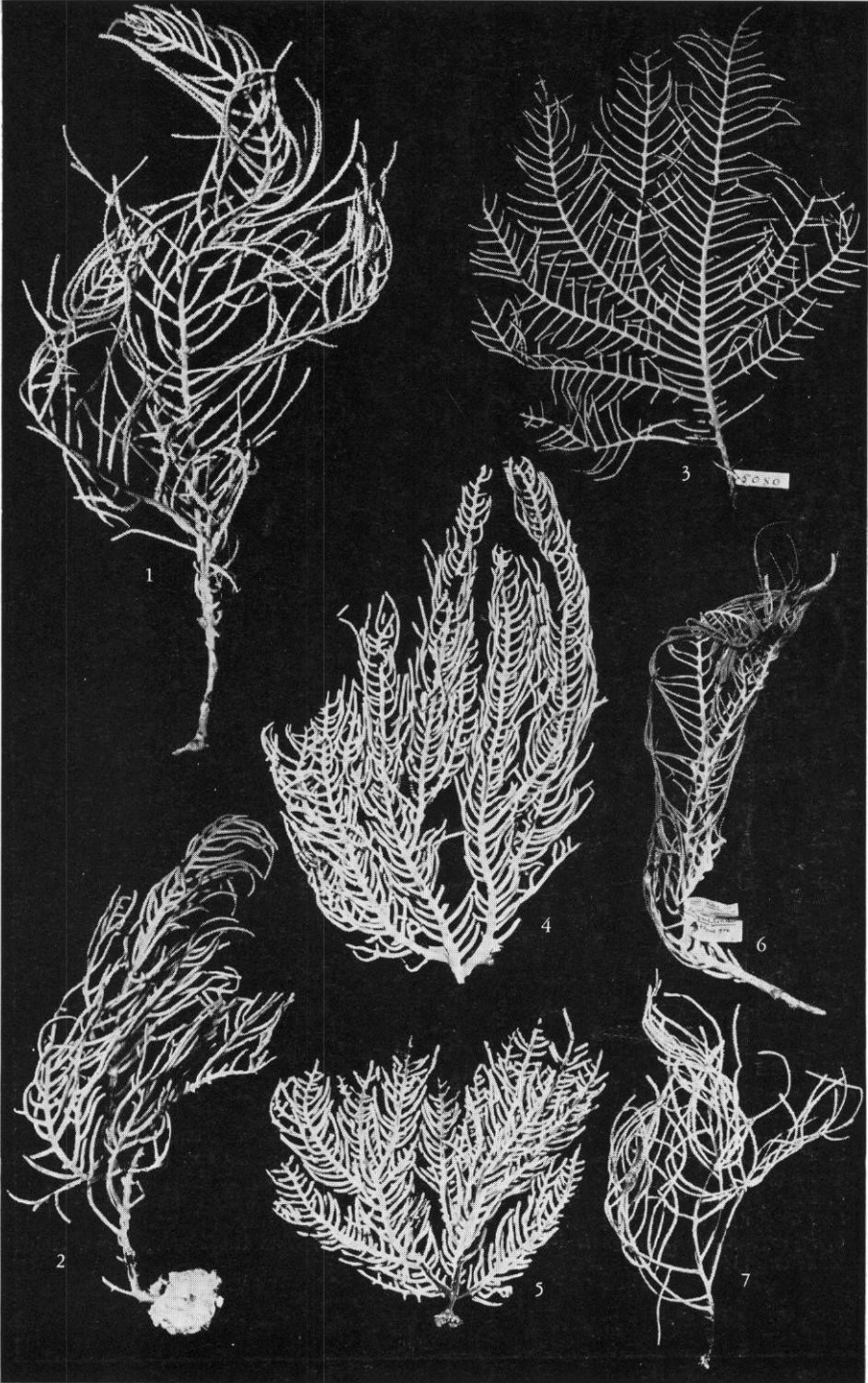


PLATE IX

1. *Pseudopterogorgia rigida* (Bielschowsky), from the Dry Tortugas. Height, 28 cm. (USNM 50211)
2. *Pseudopterogorgia americana* (Gmelin), from Bonaire. Height, 20 cm. (50206)
3. *Pseudopterogorgia acerosa* (Pallas), from Curaçao. Height, 50 cm. (Car. Marien-Biol. Inst.)
4. *Pterogorgia anceps* (Pallas). Height, 35 cm. (USNM 8855)
5. *Pterogorgia citrina* (Esper), from St. Eustatius. Height, 17 cm. (50195)
6. *Pterogorgia guadalupensis* Duchassaing & Michelotti, from the Florida Keys. Height, 24 cm. (44233)

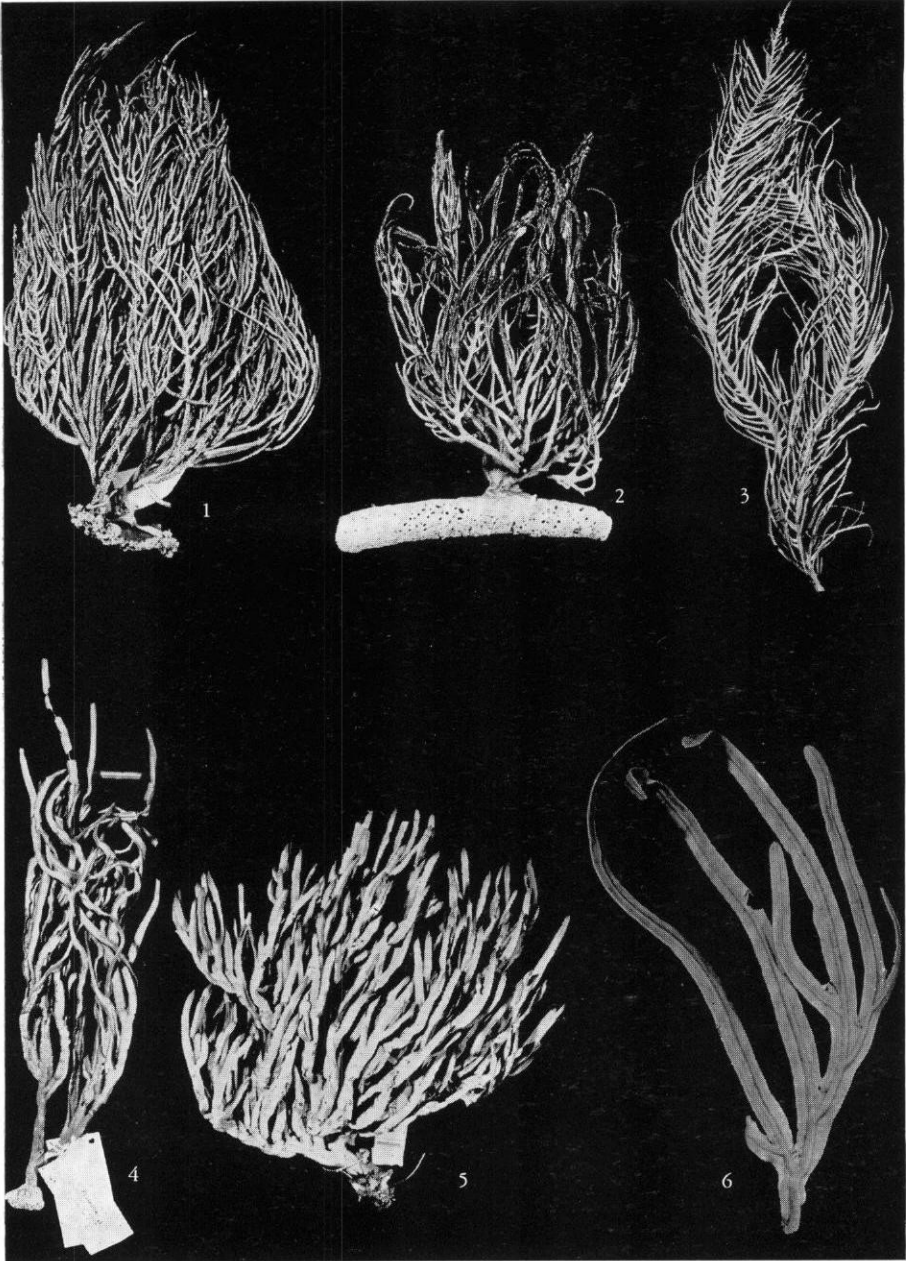


PLATE X

1. *Gorgonia ventalina* Linnaeus, from St. Barthélemy. Height, 28 cm. (USNM 50222)
2. *Gorgonia flabellum* Linnaeus, from New Providence, Bahamas. Height, 27 cm. (14365)
3. *Gorgonia mariae* spec. nov., from Puerto Rico. Height, 26 cm. (50073)
4. *Gorgonia mariae* spec. nov., from St. Eustatius. Height, 20 cm. (Holotype, 50421)
5. *Gorgonia mariae* spec. nov., forma *cymosa* nov., from St. Martin. Height, 17 cm. (Paratype, 50423)
6. *Phyllogorgia dilatata* (Esper), from Brazil. Height, 24 cm. (5252)

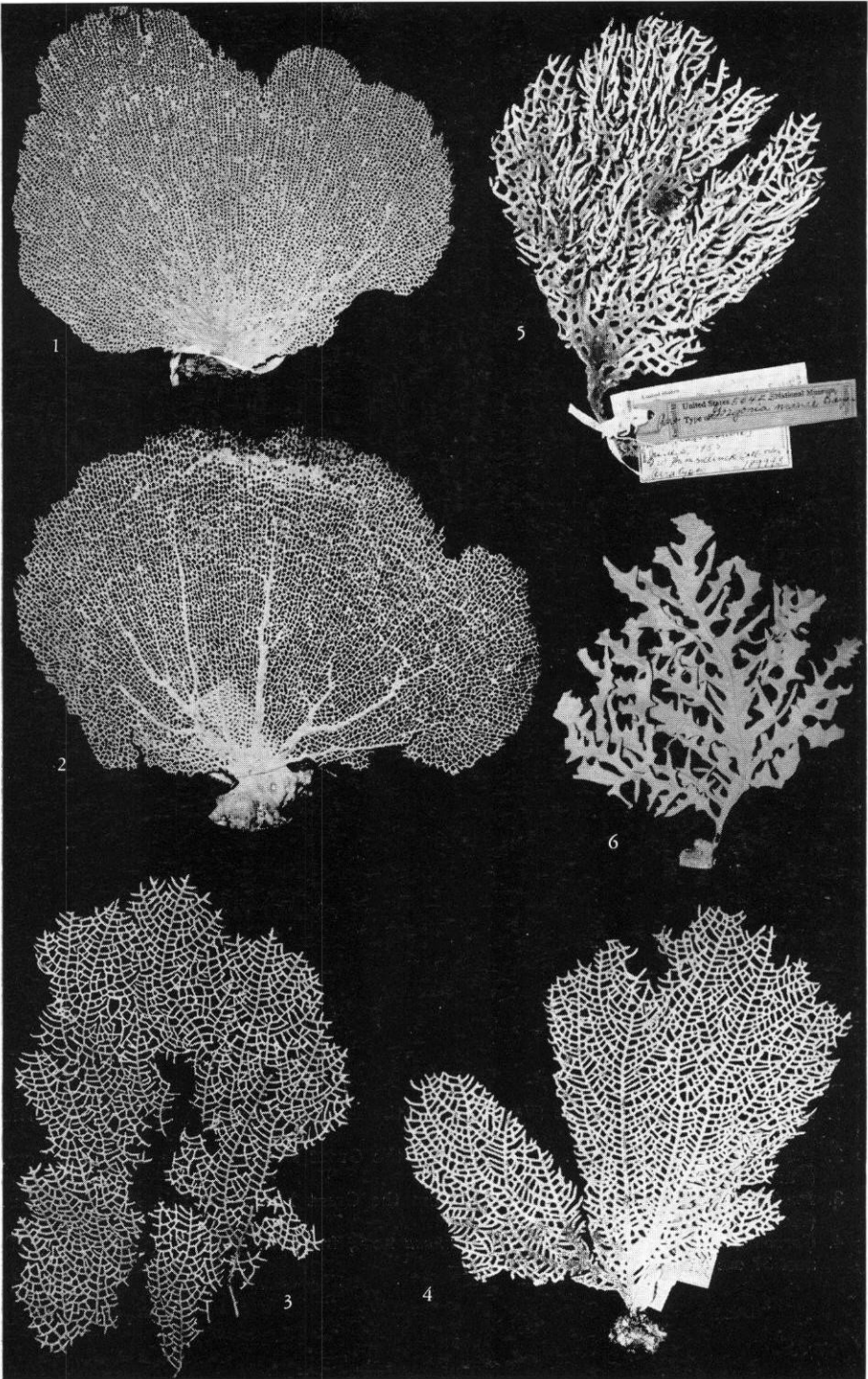


PLATE XI

1. *Pseudopterogorgia bipinnata* (Verrill), from the Florida Keys. Height, 45 cm. (USNM 50214)
2. *Pseudopterogorgia hystrix* spec. nov., from the Great Bahama Bank, Height, 20 cm. (Paratype, 50386)
3. *Pseudopterogorgia hystrix* spec. nov., from the Great Bahama Bank. Height 35 cm. (Holotype, 50385)
4. *Gorgonia mariae* spec. nov., forma *plumosa* nov., from Anegada. Height 40 cm (left) and 37 cm (right). (Paratypes, 51027)

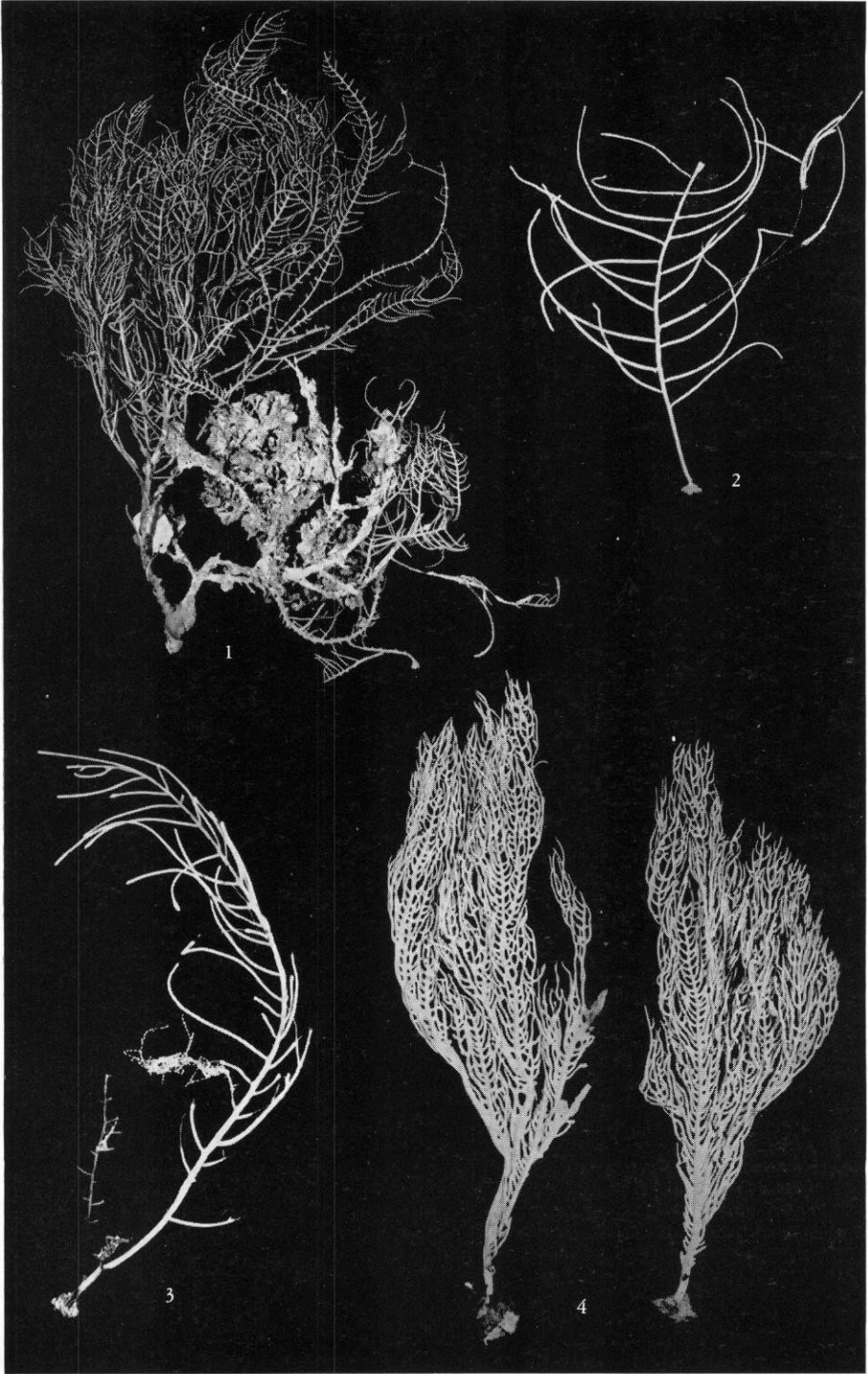


PLATE XII

Above, *Telesto riisei* (Duchassaing & Michelotti), together with *Tubastraea tenuilamellosa* (Milne Edwards & Haime), on iron beam of wharf near Oranjestad, Aruba. (USNM 50375) Photograph by P. Wagenaar Hummelinck.

Below, *Telesto riisei* (Duchassaing & Michelotti), from Florida: taken from bottom of ship anchored 1 year in Biscayne Bay (USNM 44065).

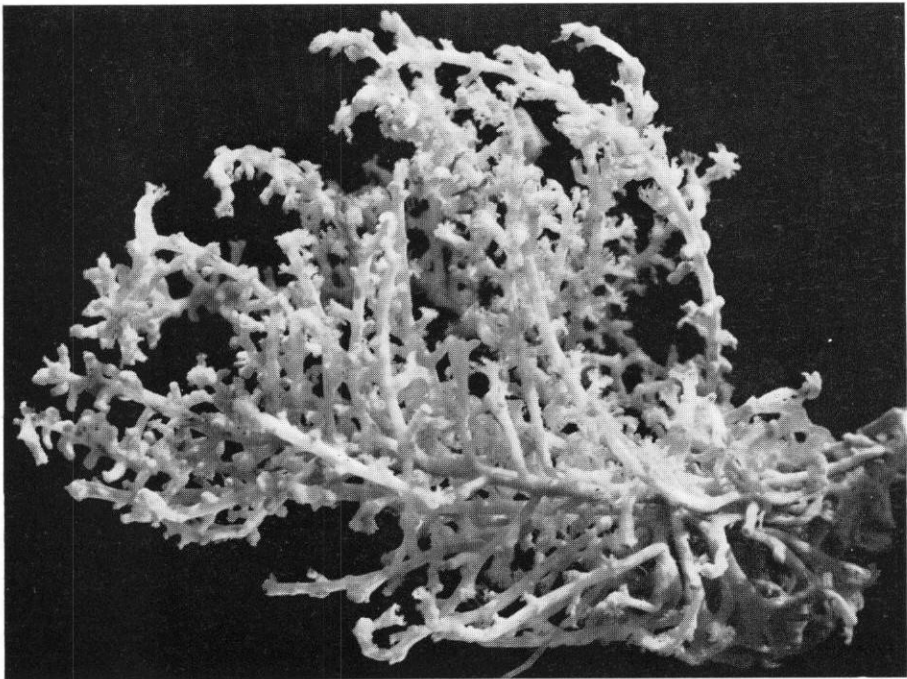
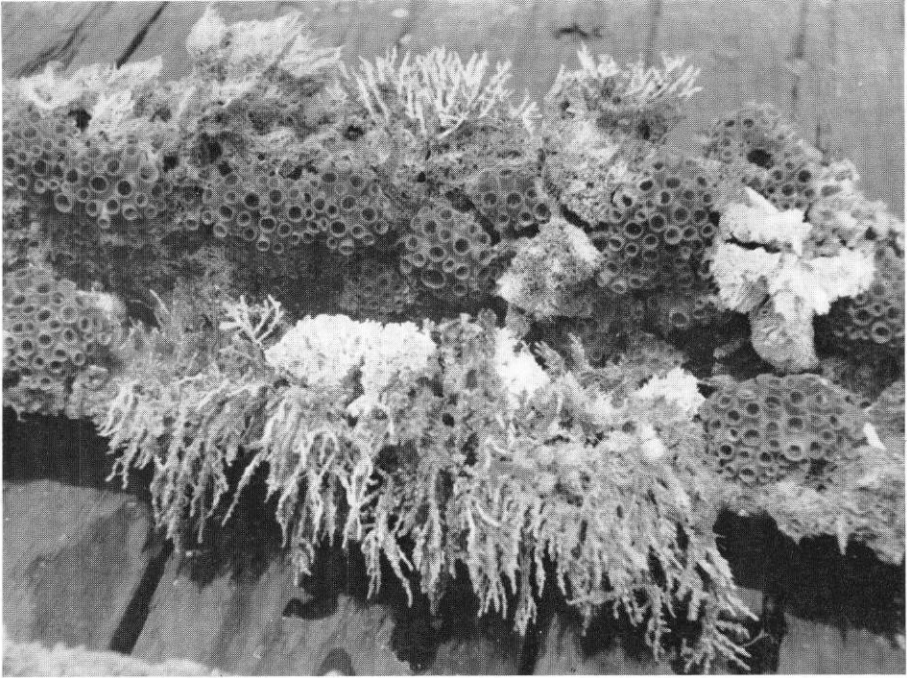


PLATE XIII

- 1a. *Pseudoplexaura crucis* spec. nov., from Virgin Islands. Height, 34 cm. (Holotype, USNM 51718) 1b. The same, detail of branches.
- 2a. *Plexaurella nutans* (Duchassaing & Michelotti), from Soldier Key, Florida. Height, 47 cm. (51725) 2b. The same, detail of branches.

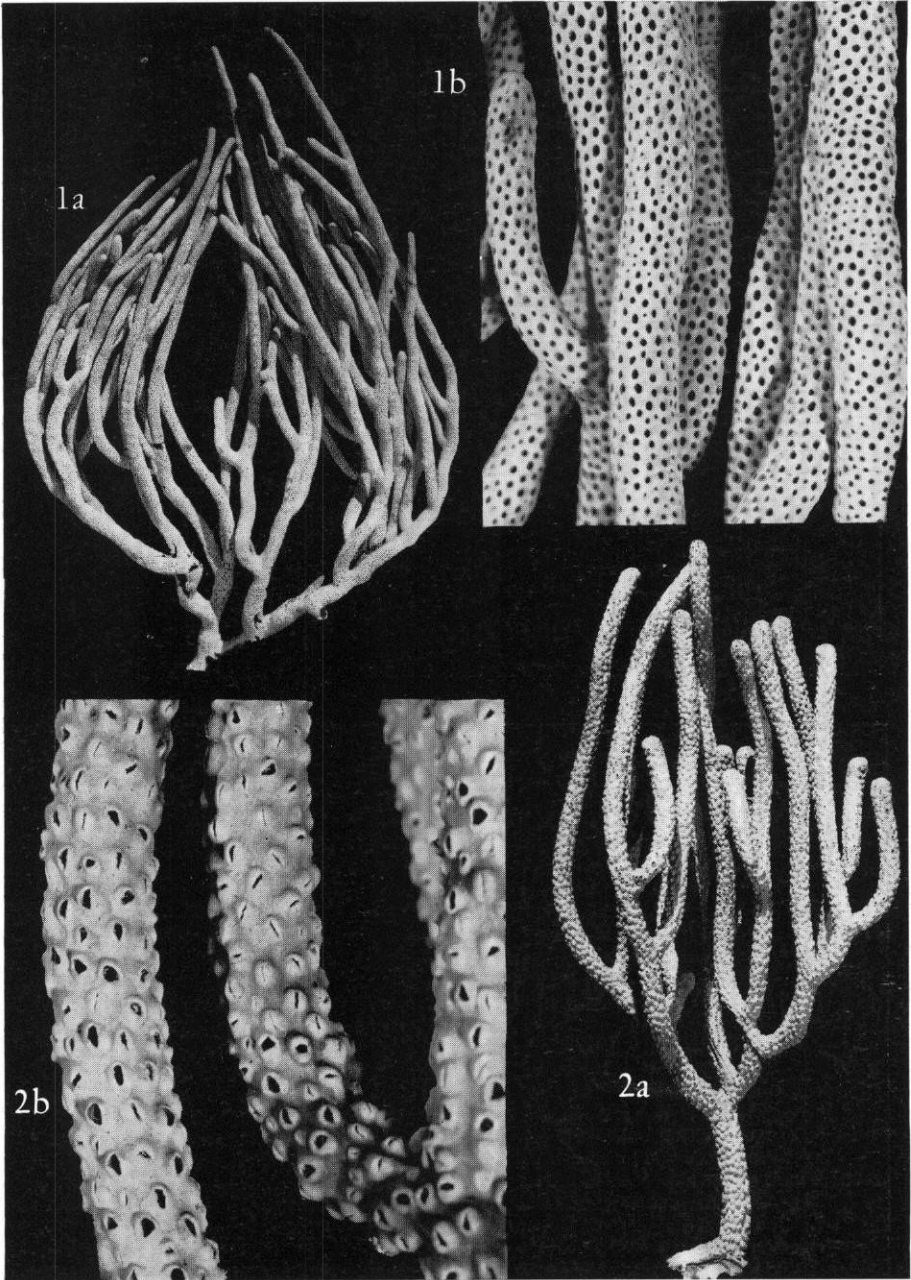


PLATE XIV

- 1-4. *Eunicea tourneforti* Milne Edwards & Haime. Details of four specimens from Soldier Key, Florida, showing variation in calyces. 1. A typical, broad specimen 22 cm. tall. (UMML) 2. A specimen 20 cm. tall, with less prominent calyces. (USNM 51727) 3. A tall, bushy colony 39 cm. tall, with crowded calyces. This is the specimen shown on Pl. XXI. (51728) 4. A bushy colony 38 cm. tall, with inconspicuous calyces. (51729)
- 5-7. *Eunicea tourneforti* Milne Edwards & Haime. Details of three specimens from the same locality in Bermuda, showing variation in calyces. 5. A candelabrum-shaped colony 20 cm. tall, with slender branches. (51730) 6. A narrower colony 24 cm. tall, with stouter branches. (51731) 7. A stout colony 22 cm. tall, with thick branches and blunt, crowded calyces. (51732)
- 8-10. *Eunicea asperula* Milne Edwards & Haime. Details of three specimens from Soldier Key, Florida, showing variation in calyces. 8. An upright, bushy colony 43 cm. tall, with prominent calyces. (51733) 9. A straggling colony 42 cm. tall, with inconspicuous calyces. (UMML) 10. A slender, upright colony 44 cm. tall, with crowded, sharp calyces. (USNM 51734)
11. *Eunicea laciniata* Duchassaing & Michelotti. Two branch tips of an exceptionally stout colony from Yucatan. (51459)

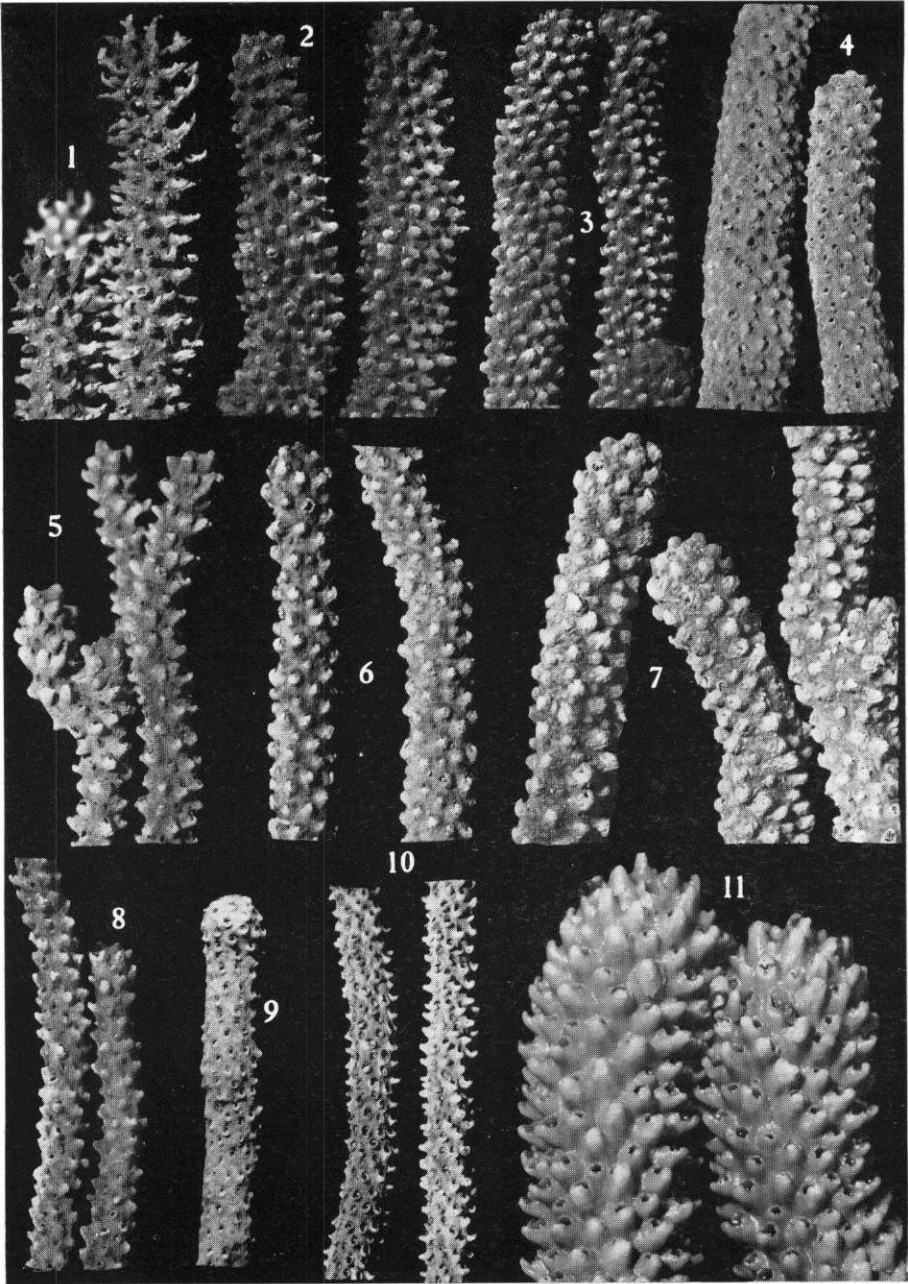


PLATE XV

Eunicella modesta Verrill, from Fernandina, Florida, 440 fathoms. Above, the entire colony. Height, 12 cm. Below, spicules; mostly balloon clubs of surface layer, but two double spindles of inner layer near middle of field, and three broken anthocodial rods at lower right. (USNM 10505)

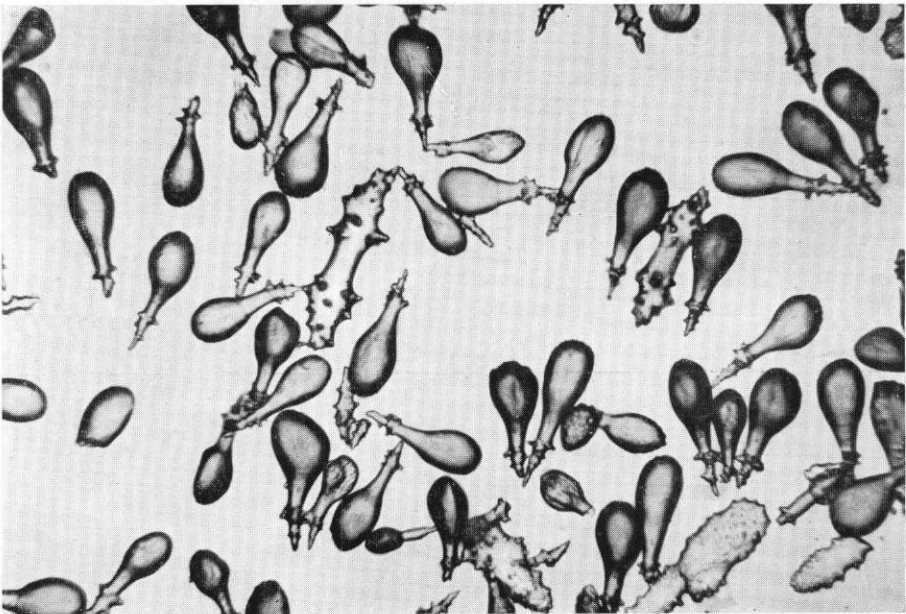
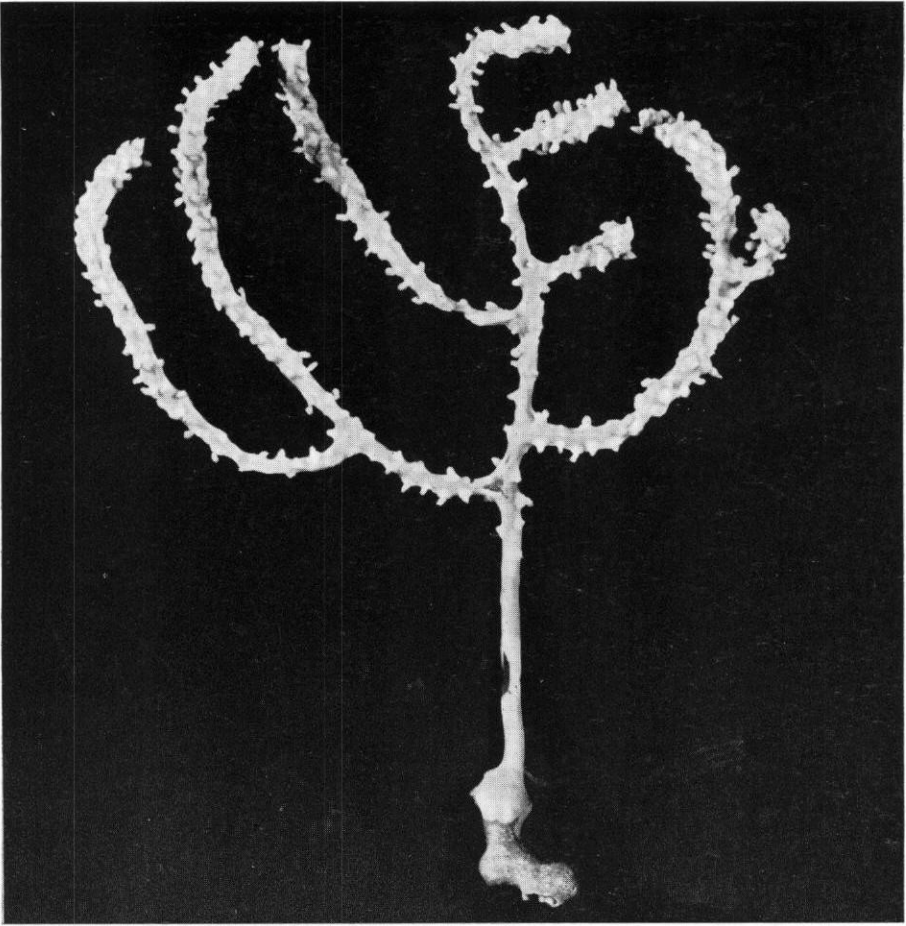


PLATE XVI

Left, *Plexaura homomalla* (Esper). Living colony photographed under water at Buck Island, St. Croix, VIII. 1960. (Branch, USNM 51735)

Right, *Plexaura flexuosa* Lamouroux. Living colony photographed under water at Buck Island, St. Croix, VIII. 1960. (Branch, 51736)

Both photographs by R. E. Schroeder.

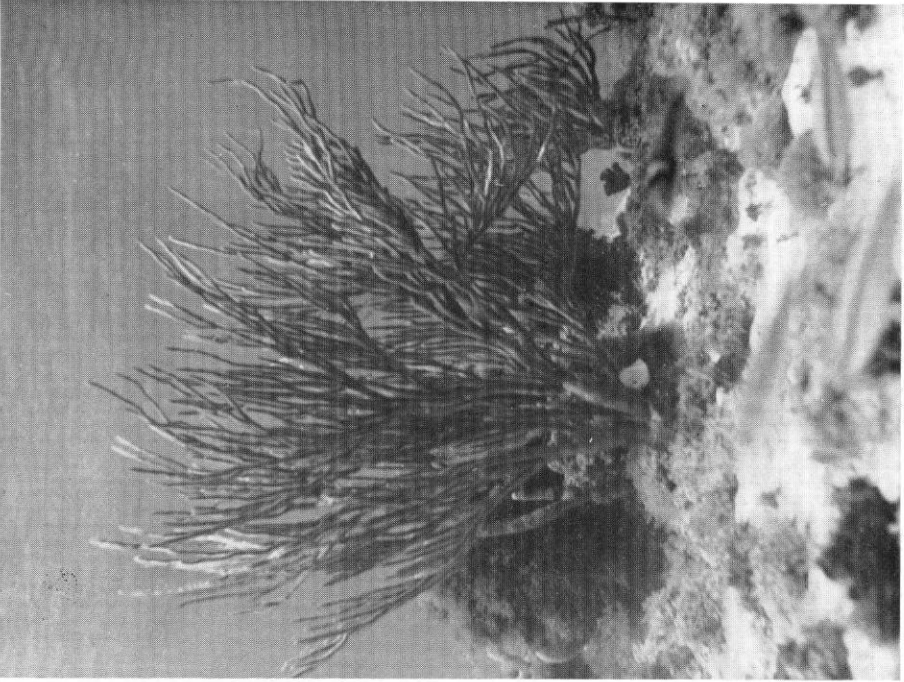


PLATE XVII

Left, *Plexaura flexuosa* Lamouroux. Living colony photographed under water at Soldier Key, Florida, 10. X. 1960.

Right, the same colony prepared as a dry specimen. Height, 41 cm. (USNM 51737)

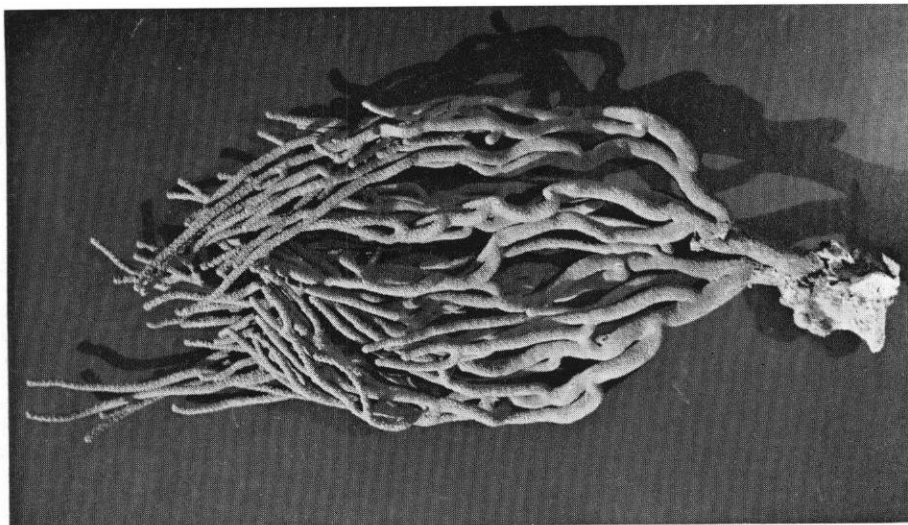


PLATE XVIII

Left, *Pseudoplexaura porosa* (Houttuyn). Living colony photographed under water at Buck Island, St. Croix, VIII. 1960. (Branch, USNM 51703)

Right, *Pseudoplexaura flagellosa* (Houttuyn). Living colony photographed under water at Buck Island, St. Croix, VIII. 1960. (Branch, 51711)

Both photographs by R. E. Schroeder.

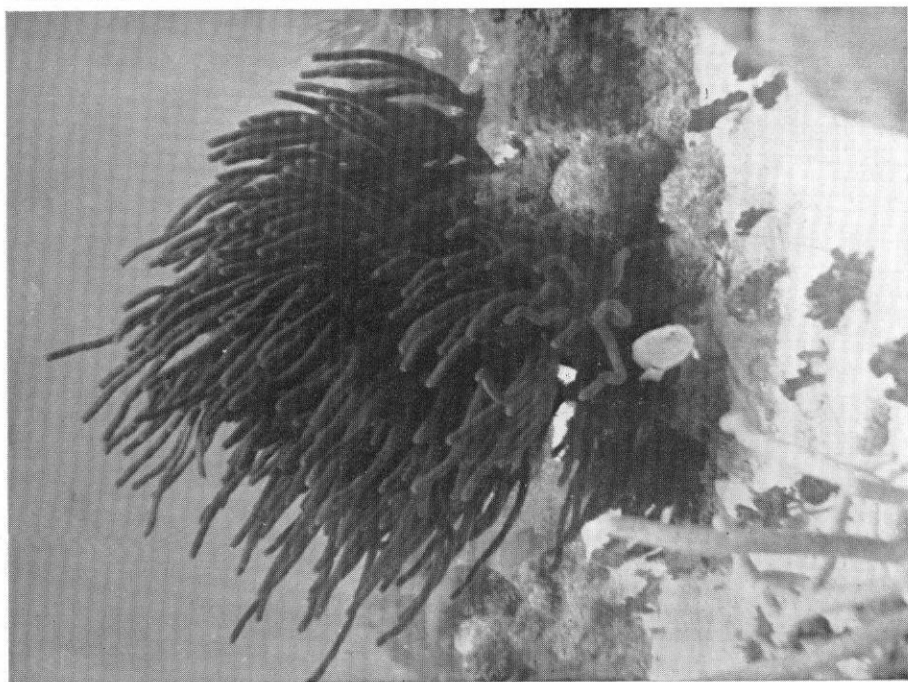
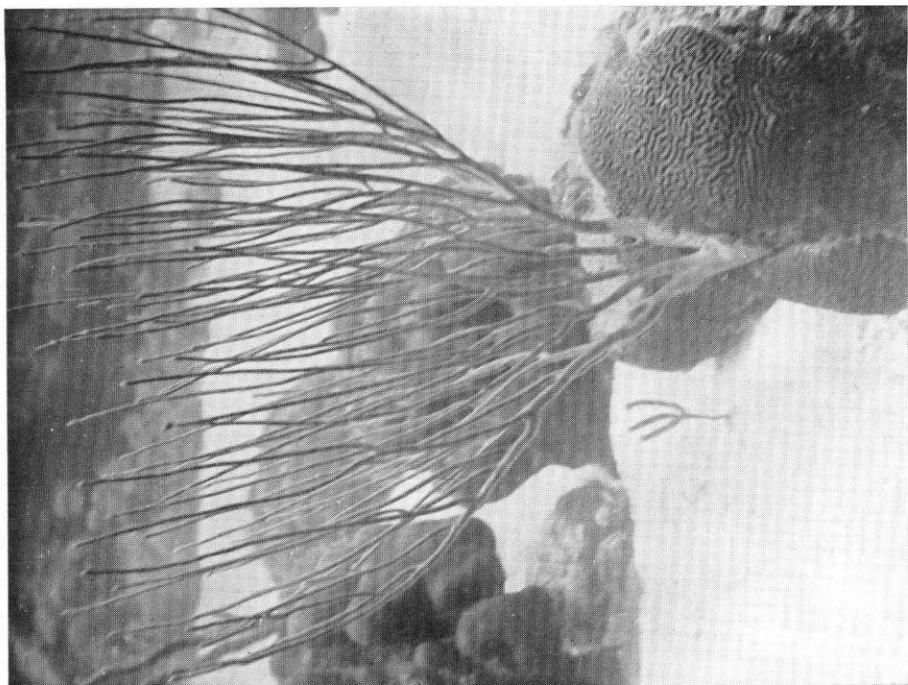


PLATE XIX

Top, *Pseudopterogorgia americana* (Gmelin). Living colony photographed under water at Soldier Key, Florida, 10. X. 1960. Height, 57 cm. (USNM 51738)
Bottom, *Pseudoplexaura wagneri* (Stiasny). Living colony photographed under water at St. John, XI. 1960. (Branch, 51724.) Photograph by R. E. Schroeder.

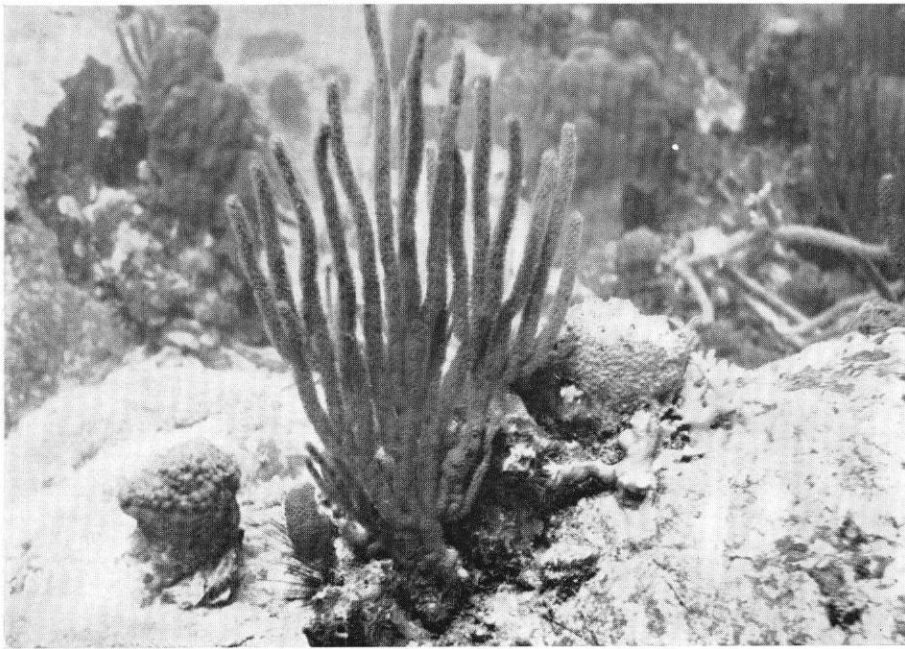


PLATE XX

Left, *Eunicea laxispica* (Lamarck). Living colony photographed under water at St. John, XI. 1960. Photograph by R. E. Schroeder.

Middle, the same colony prepared as a dry specimen. The three branches at left of living specimen have been removed. Height, 30 cm. (USNM 51739)

Right, Details of same, showing calyces.

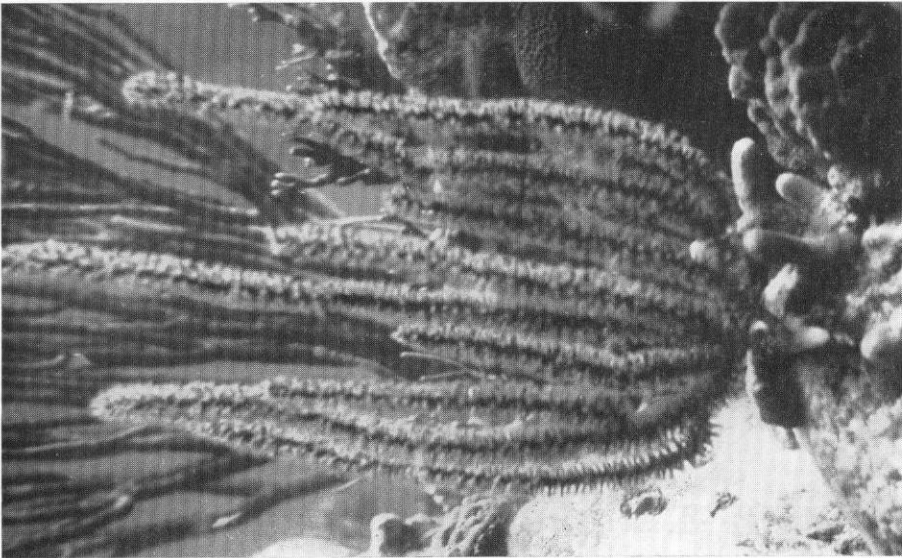
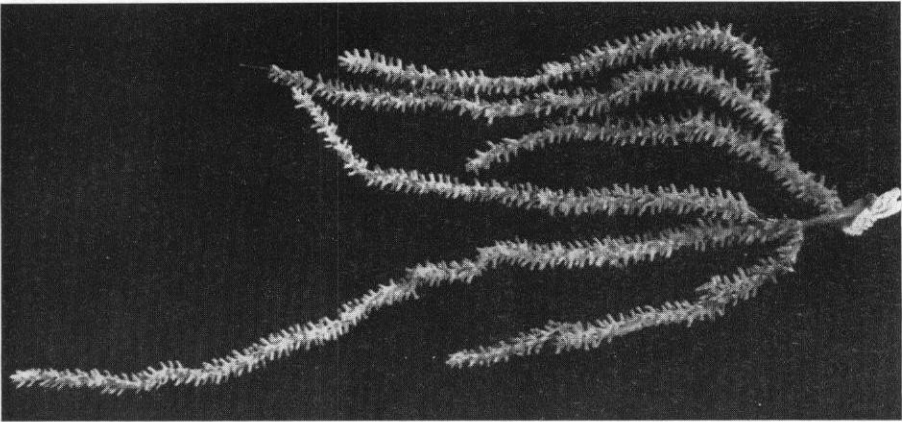
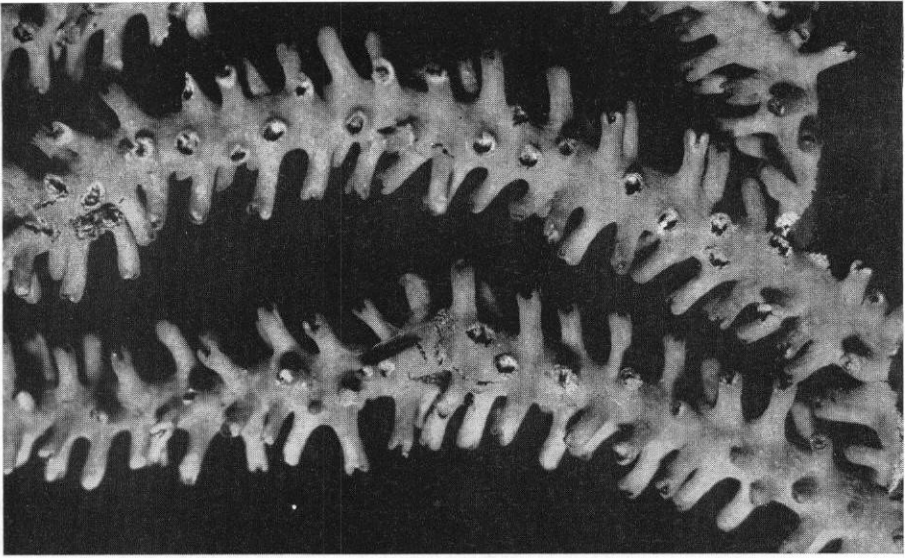


PLATE XXI

Left, *Eunicea tourneforti* Milne Edwards & Haime. Living colony photographed under water at Soldier Key, Florida, 10. X. 1960. Polyps partially expanded.

Right, the same colony preserved as a dry specimen. Height, 39 cm. (USNM 51728)

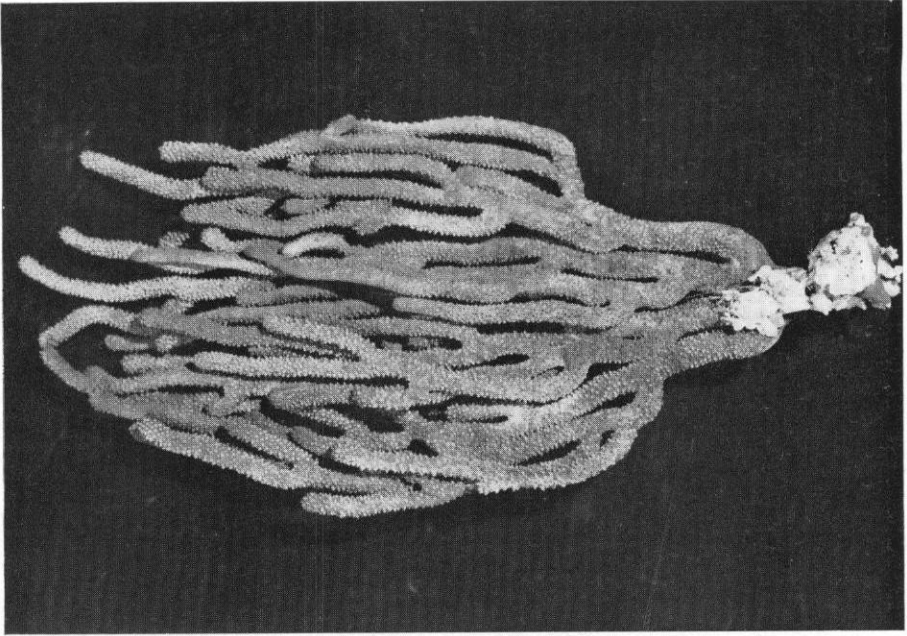


PLATE XXII

Left, *Eumicea calyculata* (Ellis & Solander). Living colony photographed under water at Soldier Key, Florida, 10. X. 1960. Polyps almost fully expanded.

Middle, the same colony prepared as a dry specimen. Height, 40 cm. (USNM 51740)

Right - details of same showing calyces.

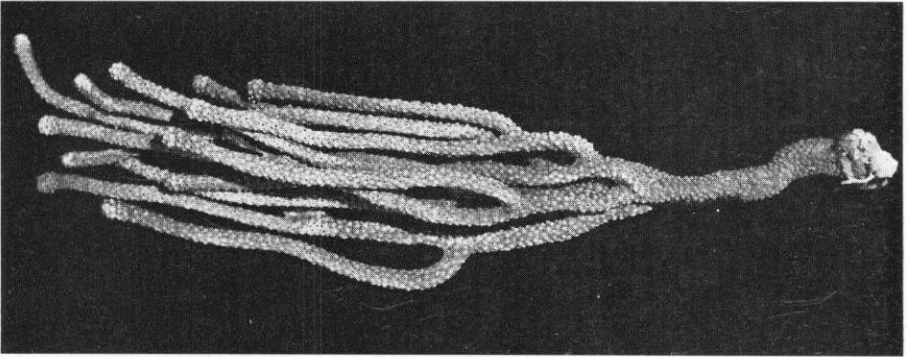
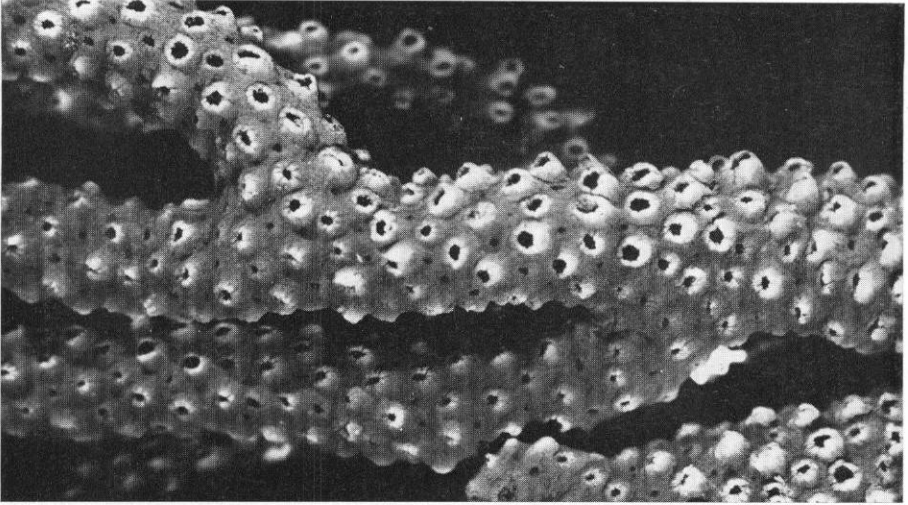
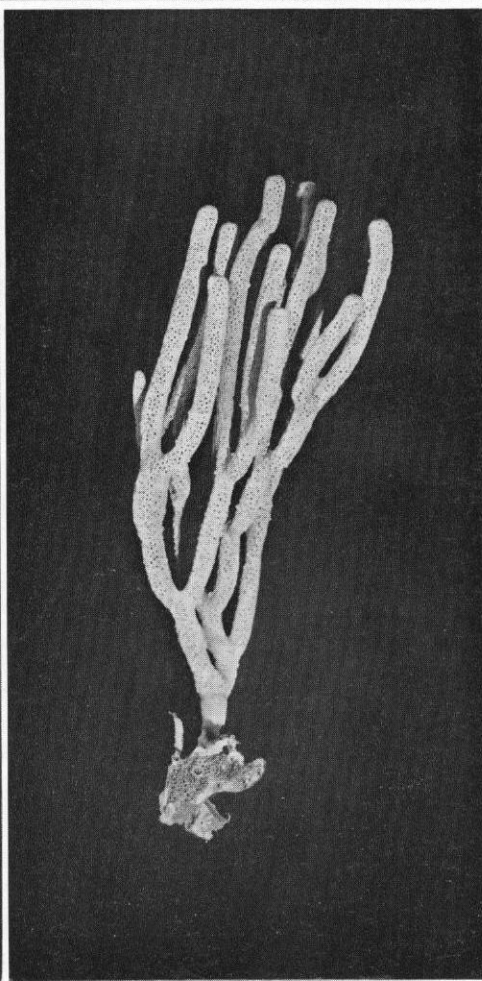
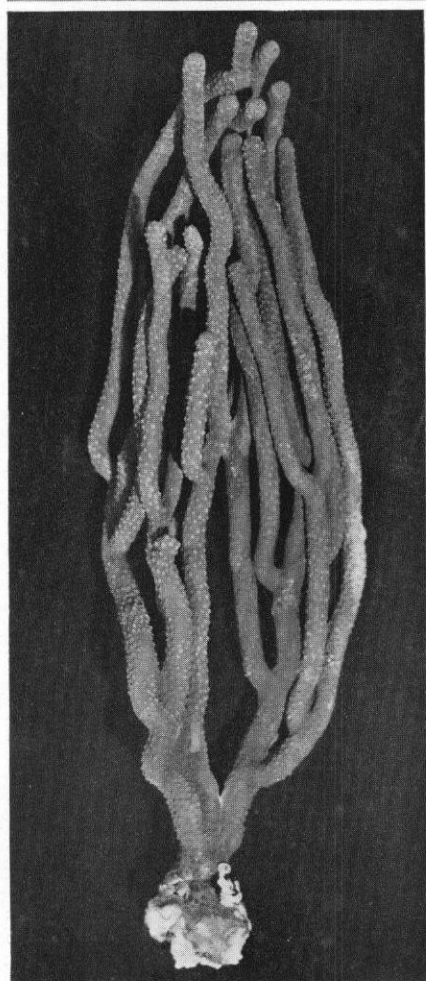


PLATE XXIII

Top, living colonies of *Eunicea calyculata* (Ellis & Solander) (left, polyps retracted) and *Plexaurella dichotoma* (Esper) (right, polyps fully expanded), photographed at Soldier Key, Florida, 10. X. 1960.

Bottom left, the same colony of *E. calyculata* prepared as a dry specimen. Height, 37 cm. (USNM 51741)

Bottom right, the same colony of *P. dichotoma* preserved as a dry specimen. Height, 26 cm. (51742)



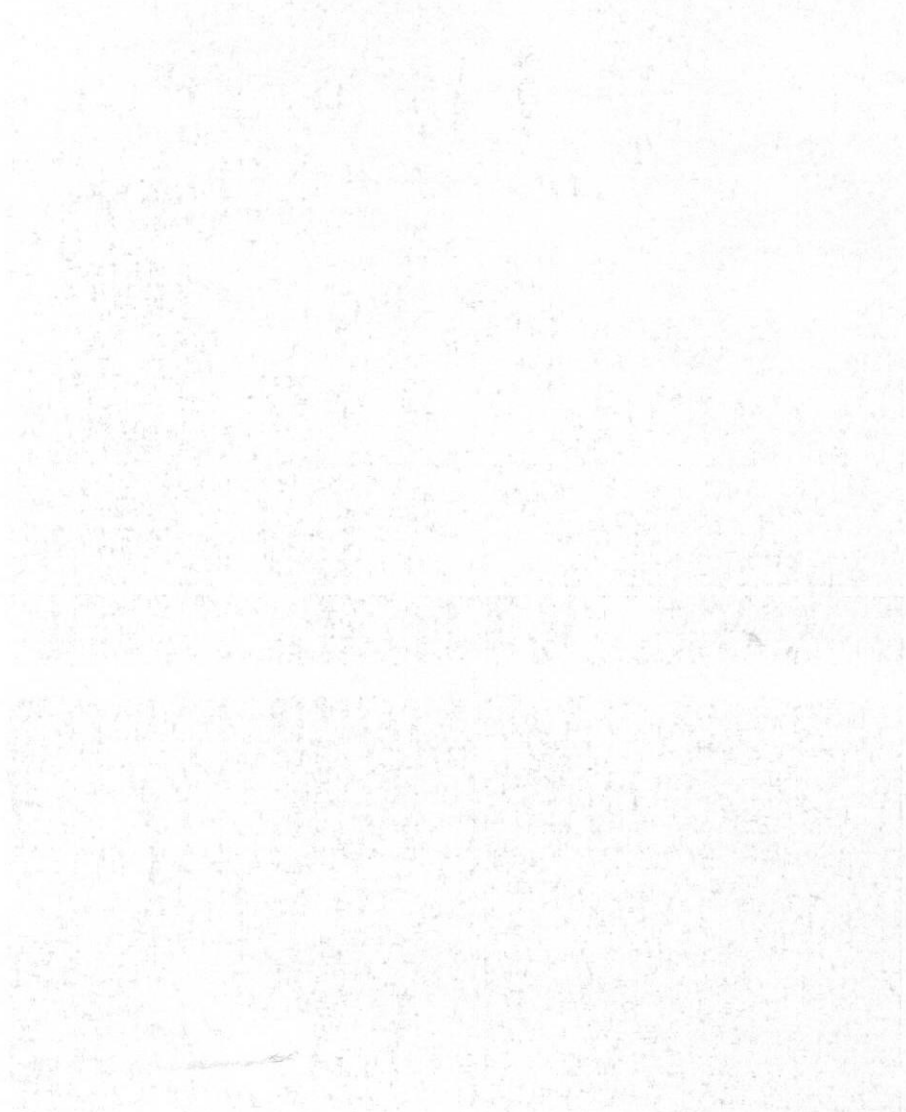


PLATE XXIV

Left, *Eunicea tourneforti* Milne Edwards & Haime, forma *atra* Verrill. Living candelabrum-shaped colony photographed under water at Buck Island, St. Croix, VIII. 1960. (Branch, USNM 51723)

Right, *Plexaurella dichotoma* (Esper). Living colony photographed under water at Buck Island, St. Croix, VIII. 1960. (Branch, USNM 51743)

Both photographs by R. E. Schroeder.

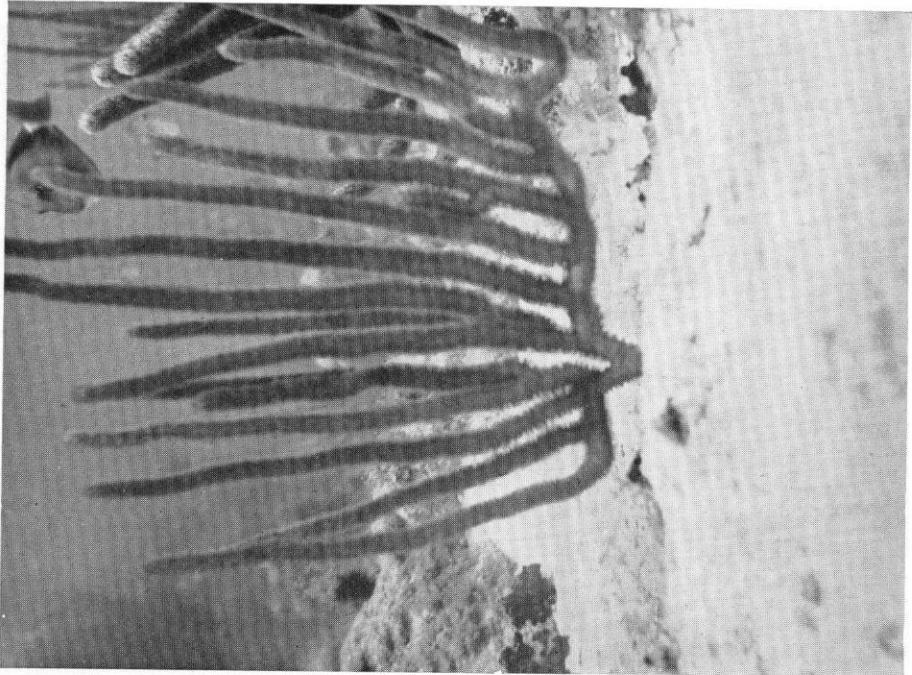
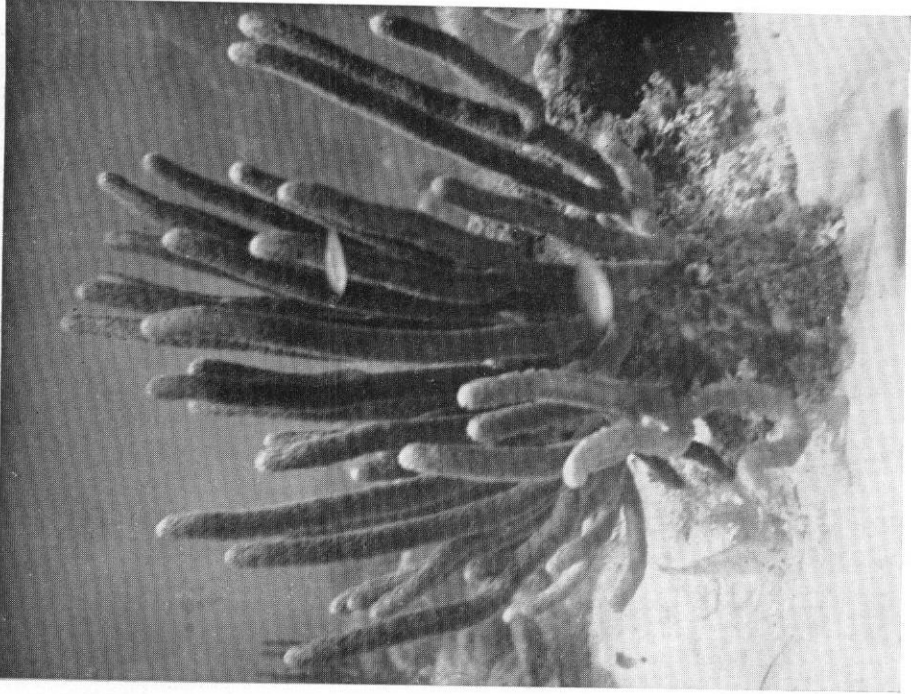
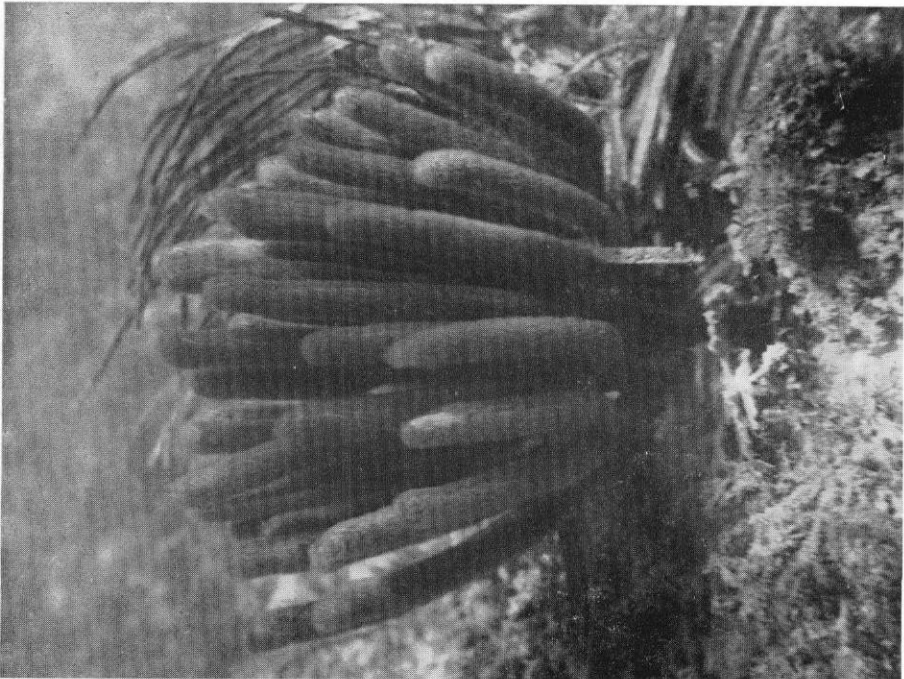
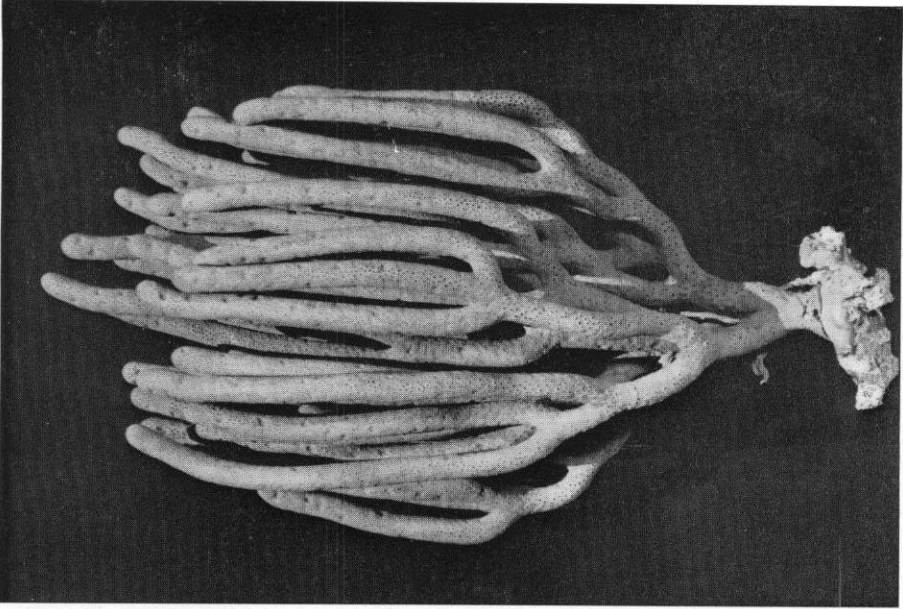


PLATE XXV

Left, *Plexaurella dichotoma* (Esper). Living colony, polyps fully expanded, photographed under water at Soldier Key, Florida, 10. X. 1960.

Right, the same colony prepared as a dry specimen. Height, 30 cm. (USNM 51744)



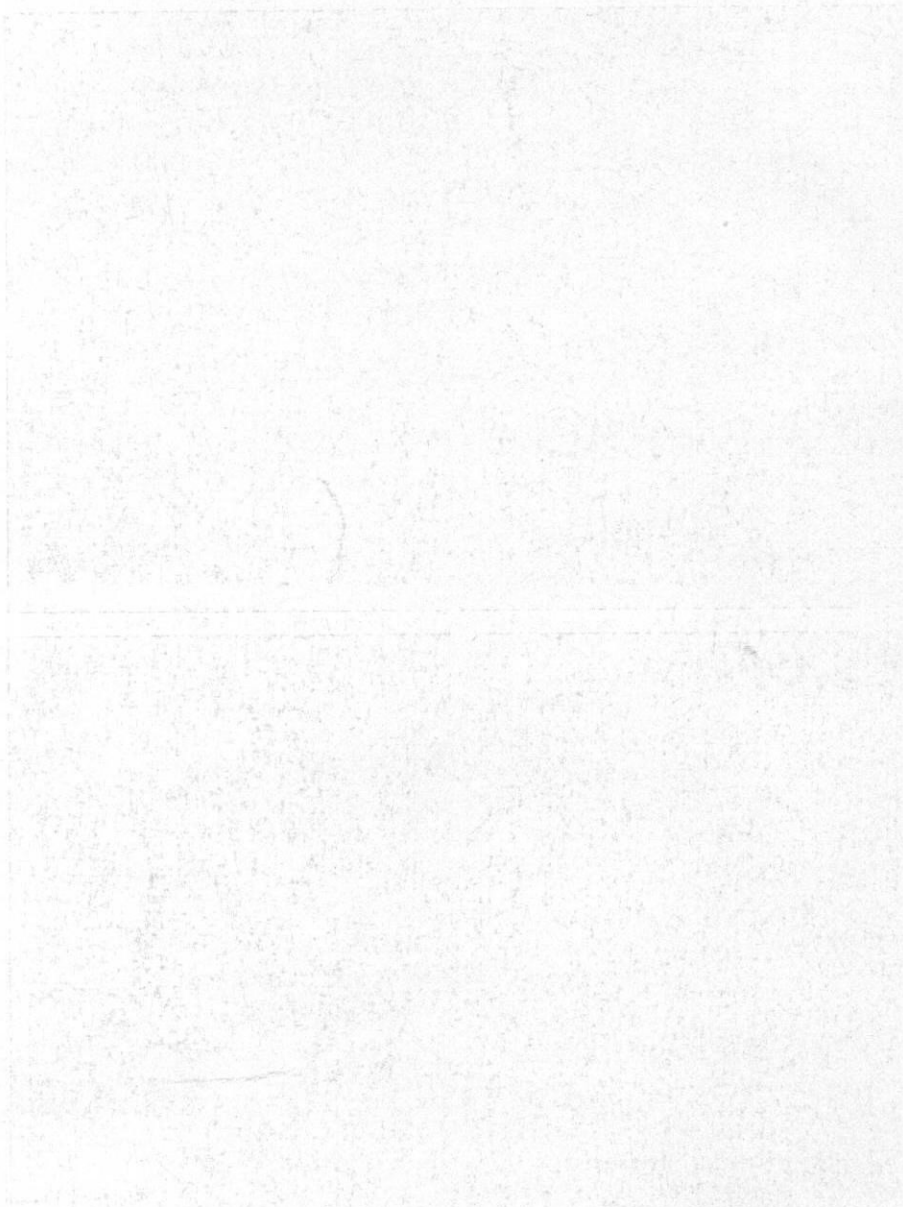


PLATE XXVI

Left, *Pterogorgia anceps* (Pallas). Living colony, fully expanded, photographed under water at Soldier Key, Florida, 10. X. 1960.

Right, the same colony prepared as a dry specimen. Height, 55 cm. (USNM 51745)

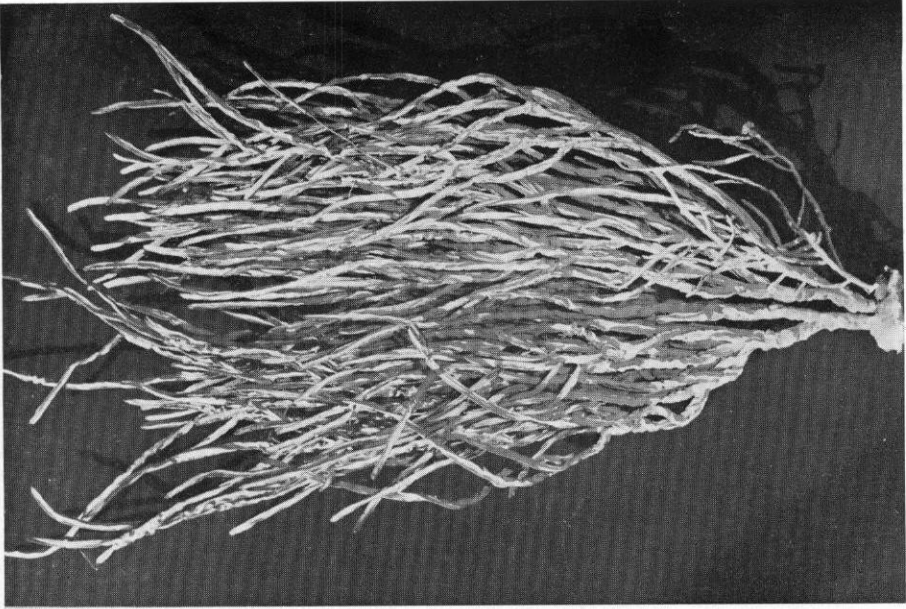


PLATE XXVII

Left, *Gorgonia ventalina* Linnaeus. Living colony photographed under water at St. John, XI. 1960. Photograph by R. E. Schroeder.

Right, the same colony prepared as a dry specimen. Height, 25 cm. (USNM 51746)

